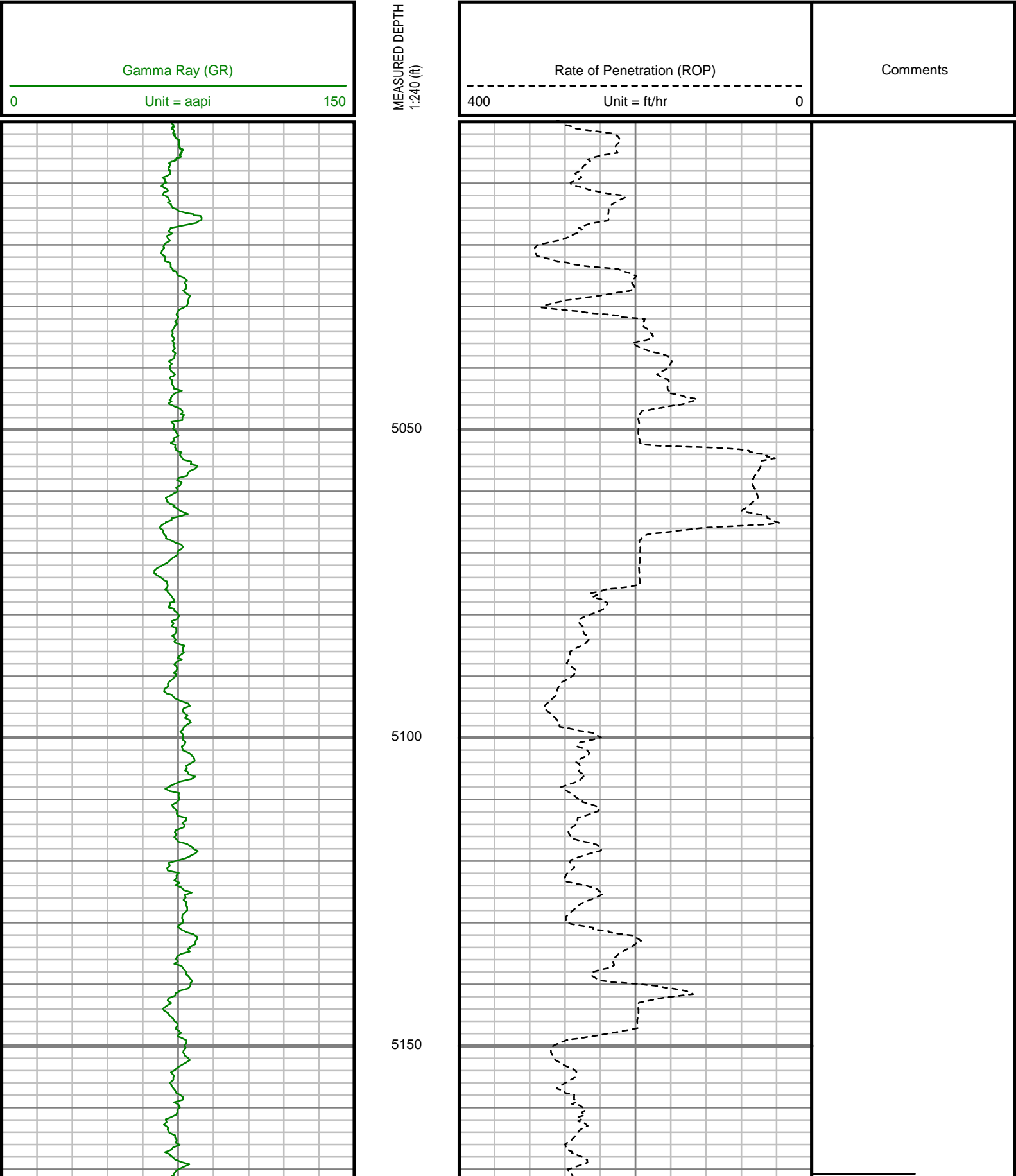
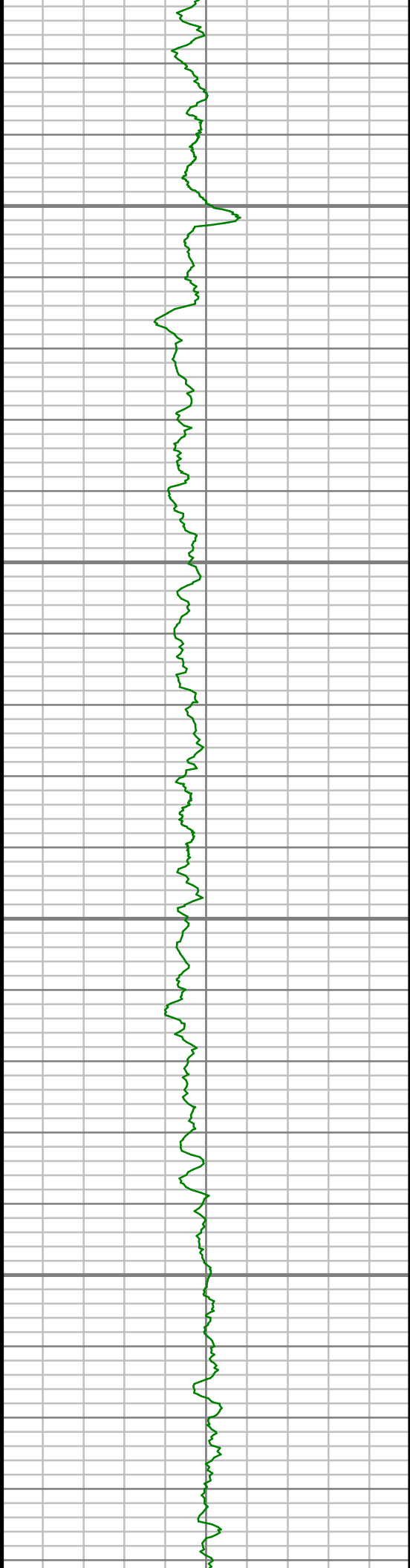


All interpretations are opinions based on inferences from electrical or other measurements and we cannot, and do not guarantee the accuracy or correctness of any interpretations, and we shall not, except in the case of gross or willful negligence on our part, be liable or responsible for any loss, costs, damages or expenses incurred or sustained by anyone resulting from any interpretation made by any of our officers, agents or employees. These interpretations are also subject to our general terms and conditions as set out in our current price schedule.

ENCANA OIL AND GAS (U.S.A.) INC
NEWNAM 2J-32H-C264
WATTENBERG FIELD
WELD COUNTY, COLORADO
05-123-39779



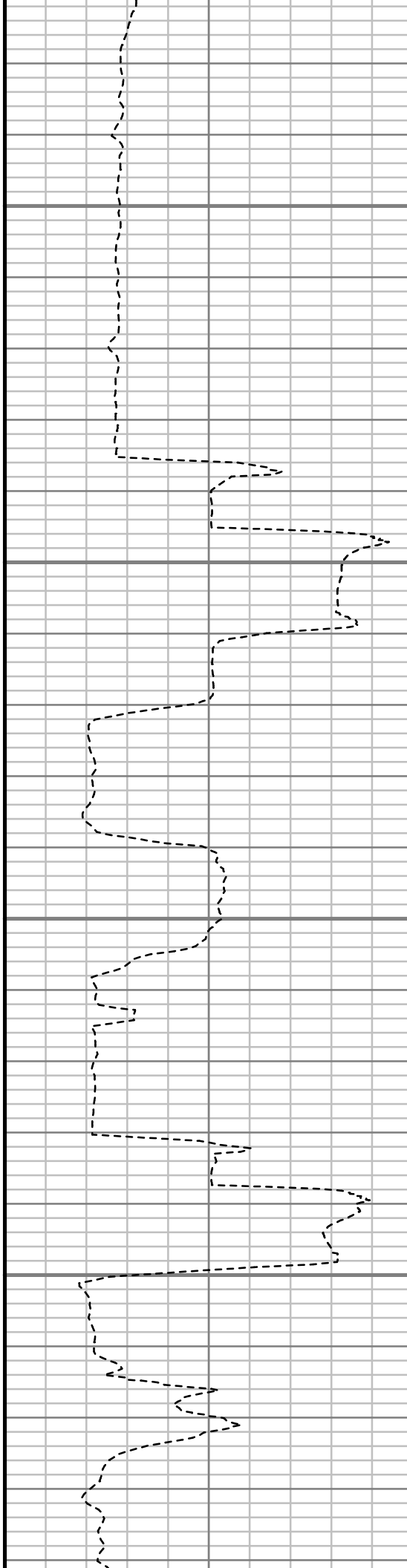


5200

5250

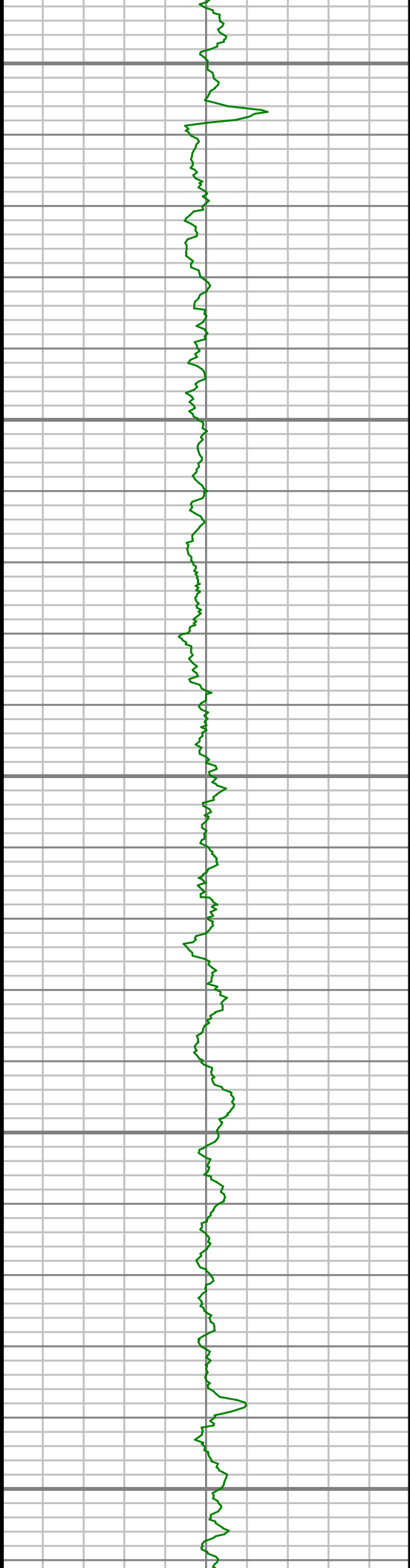
5300

5350



S: 30 MD: 5171.00 ft Inc: 2.48
deg Az: 349.29 deg TVD:
5136.46 ft

S: 31 MD: 5362.00 ft Inc: 1.04
deg Az: 73.48 deg TVD:
5327.39 ft



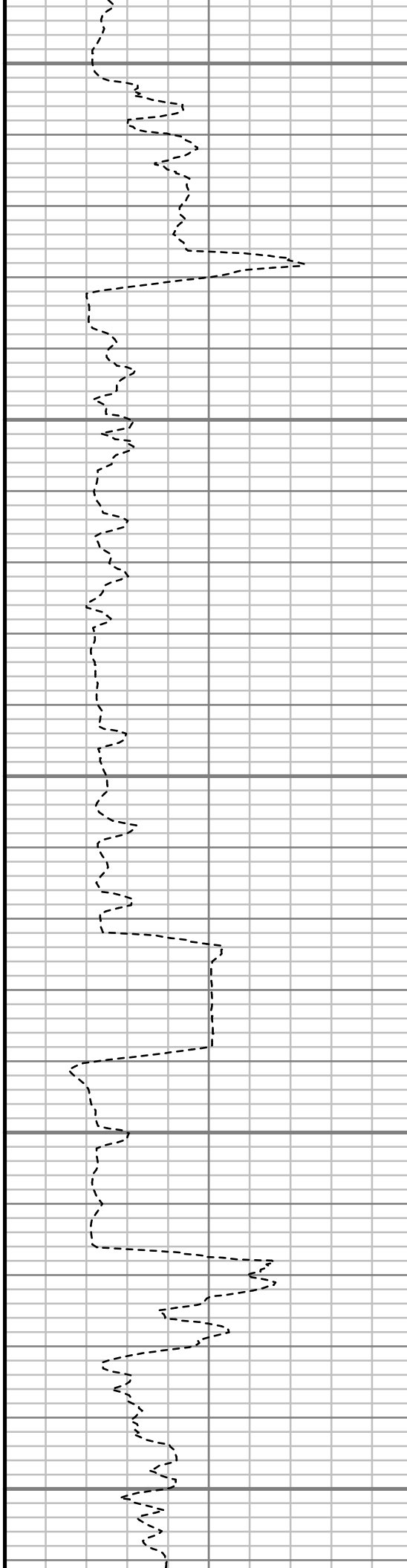
5400

5450

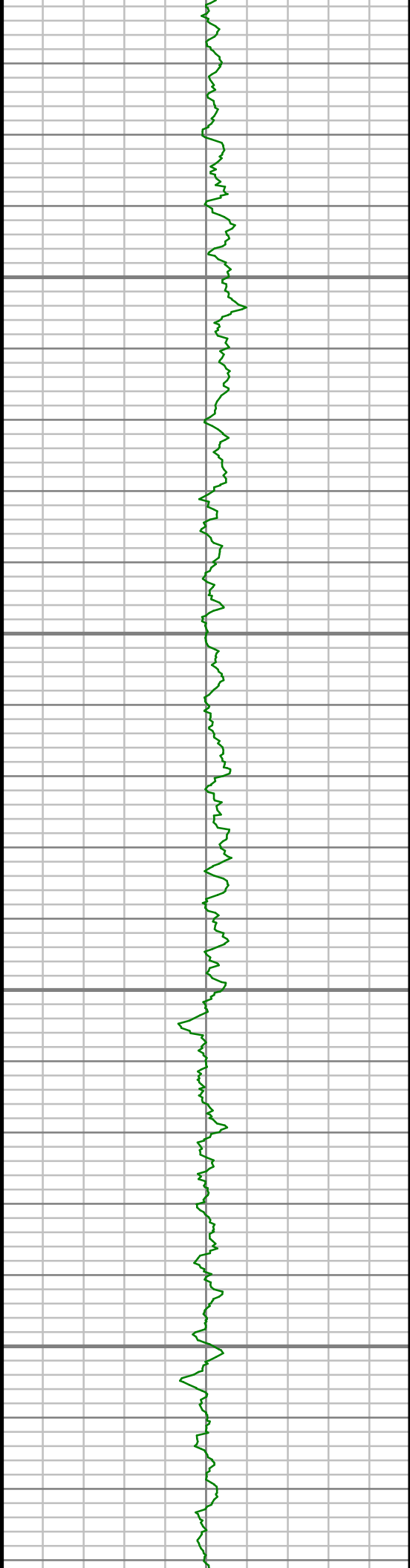
5500

5550

5600



S: 32 MD: 5552.00 ft Inc: 1.90
deg Az: 47.91 deg TVD:
5517.33 ft

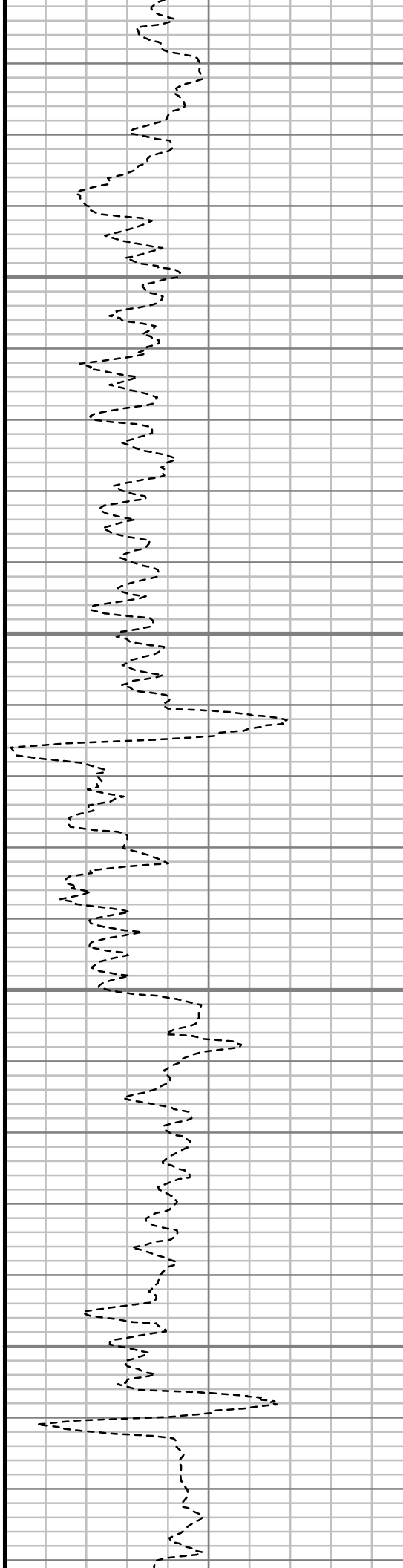


5650

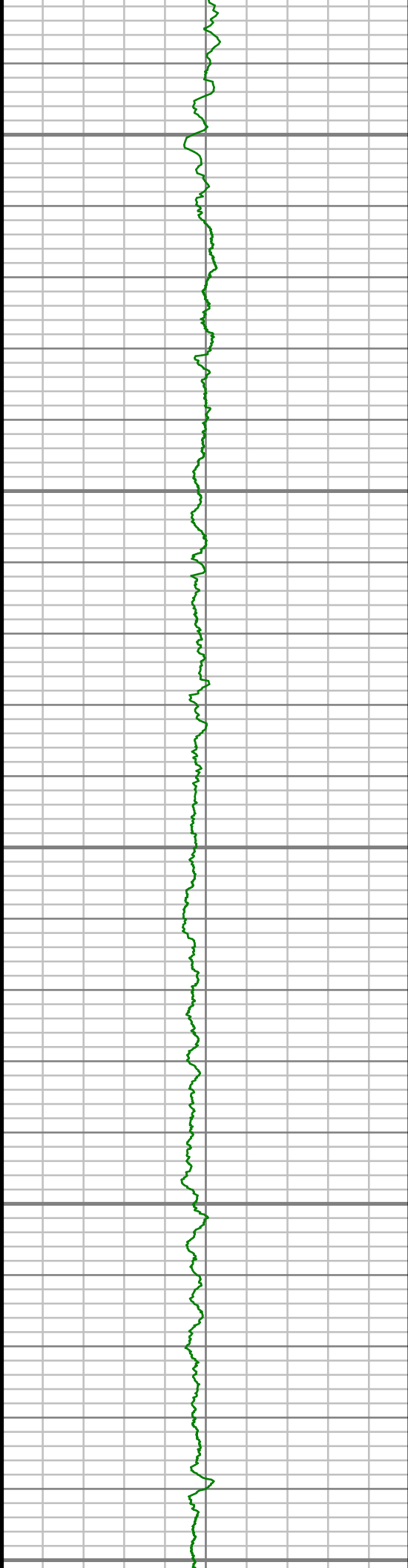
5700

5750

5800



S: 33 MD: 5743.00 ft Inc: 1.50
deg Az: 60.60 deg TVD:
5708.24 ft



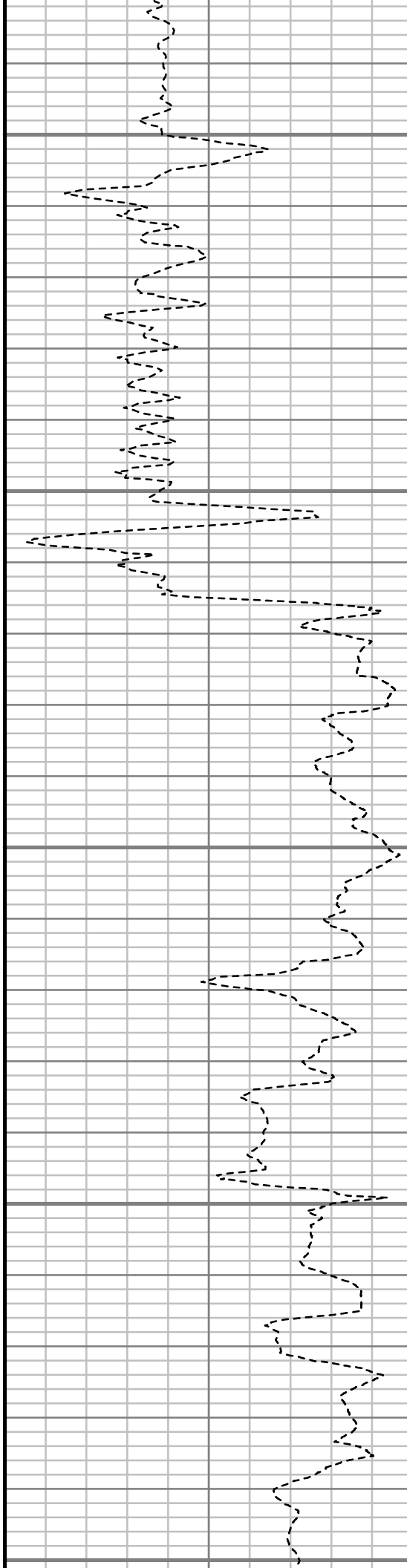
5850

5900

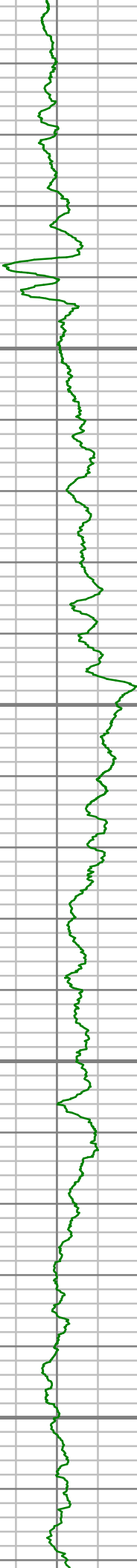
5950

6000

6050



S: 34 MD: 5933.00 ft Inc: 1.16
deg Az: 84.40 deg TVD:
5898.19 ft



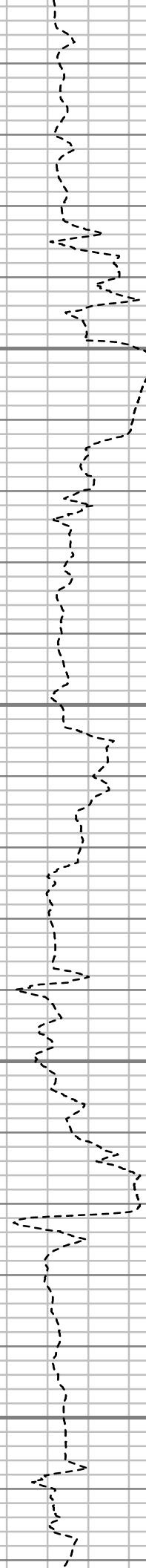
6100

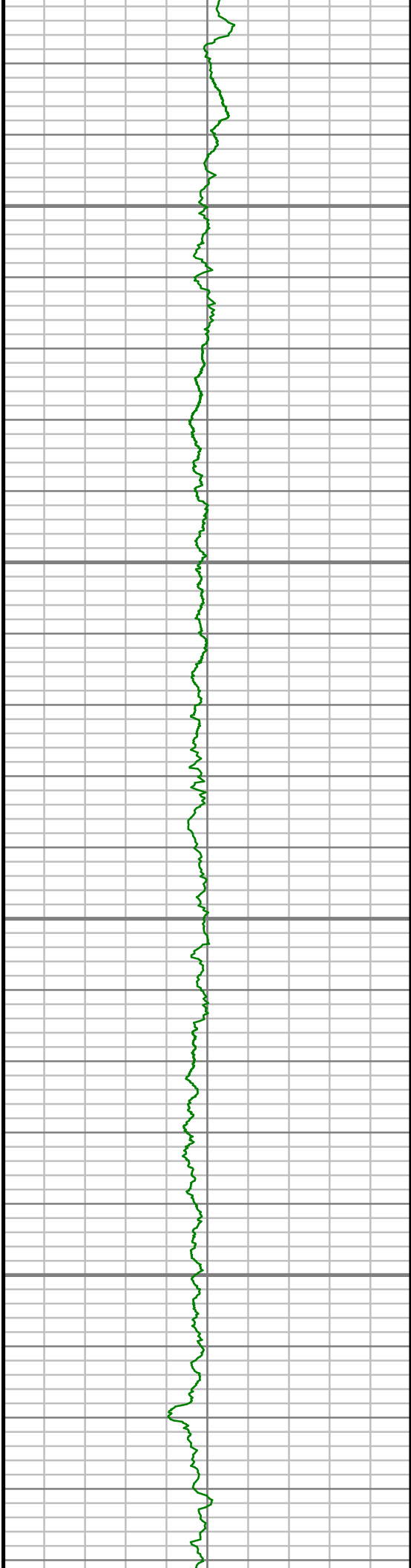
6150

6200

6250

S: 35 MD: 6123.00 ft Inc: 1.44
deg Az: 161.05 deg TVD:
6088.16 ft



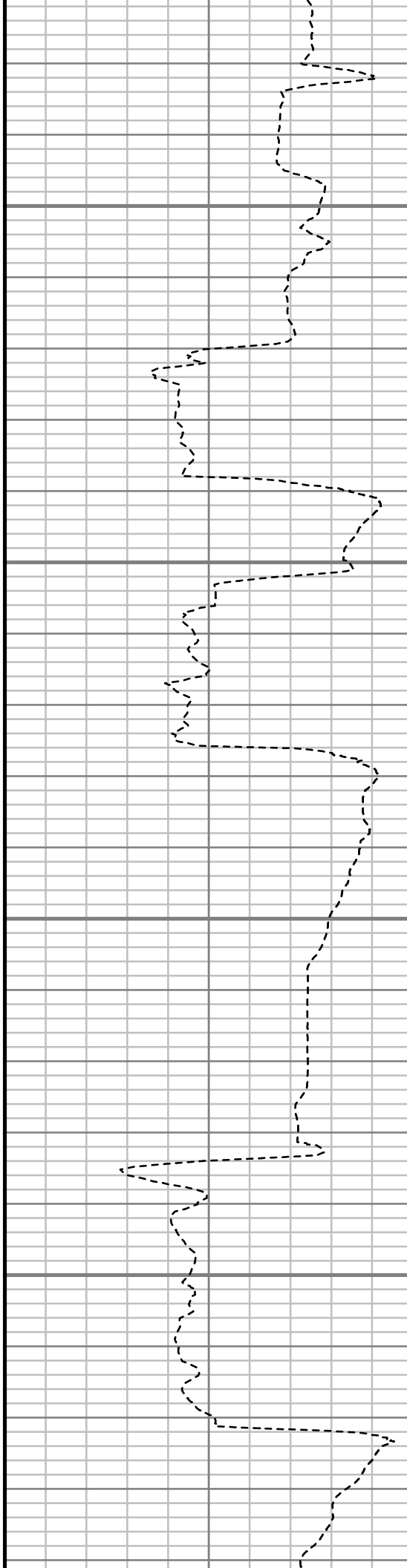


6300

6350

6400

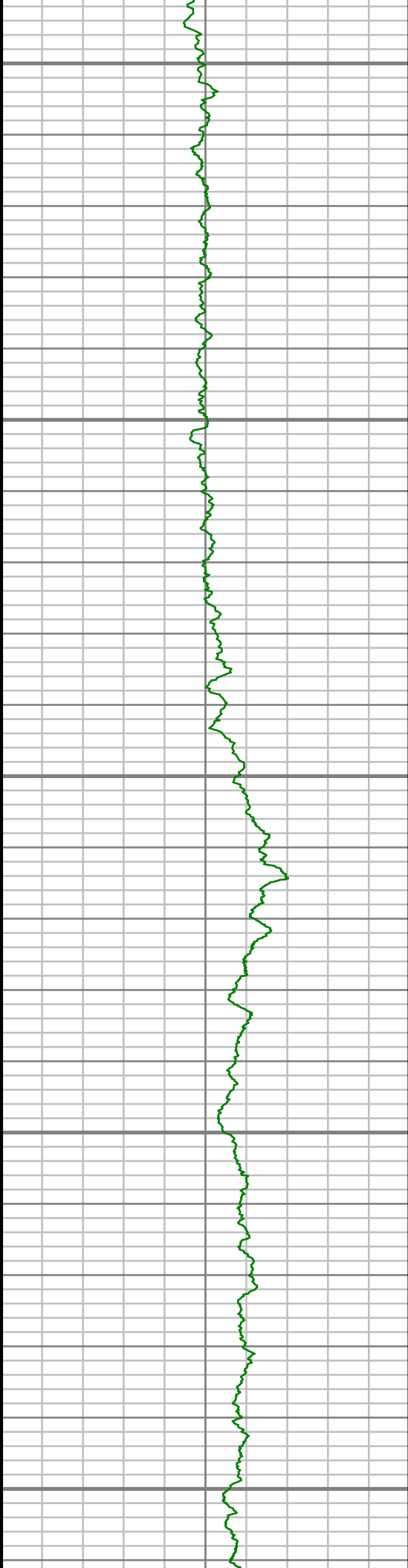
6450



S: 36 MD: 6276.00 ft Inc: 1.45
deg Az: 156.44 deg TVD:
6241.11 ft

S: 37 MD: 6315.00 ft Inc: 1.16
deg Az: 134.89 deg TVD:
6280.10 ft

S: 38 MD: 6410.00 ft Inc: 7.67
deg Az: 169.06 deg TVD:
6374.77 ft



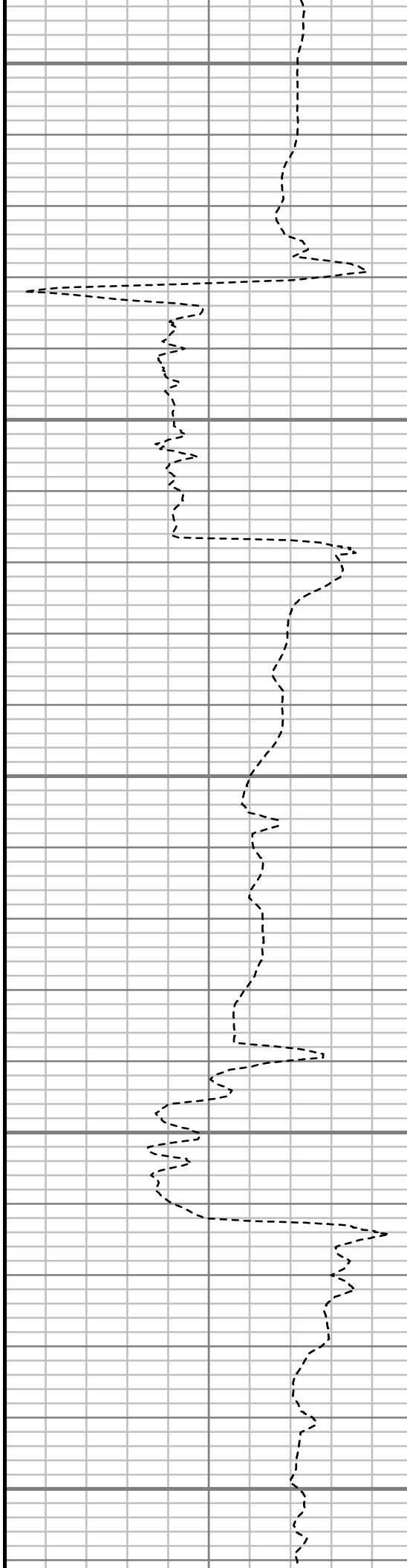
6500

6550

6600

6650

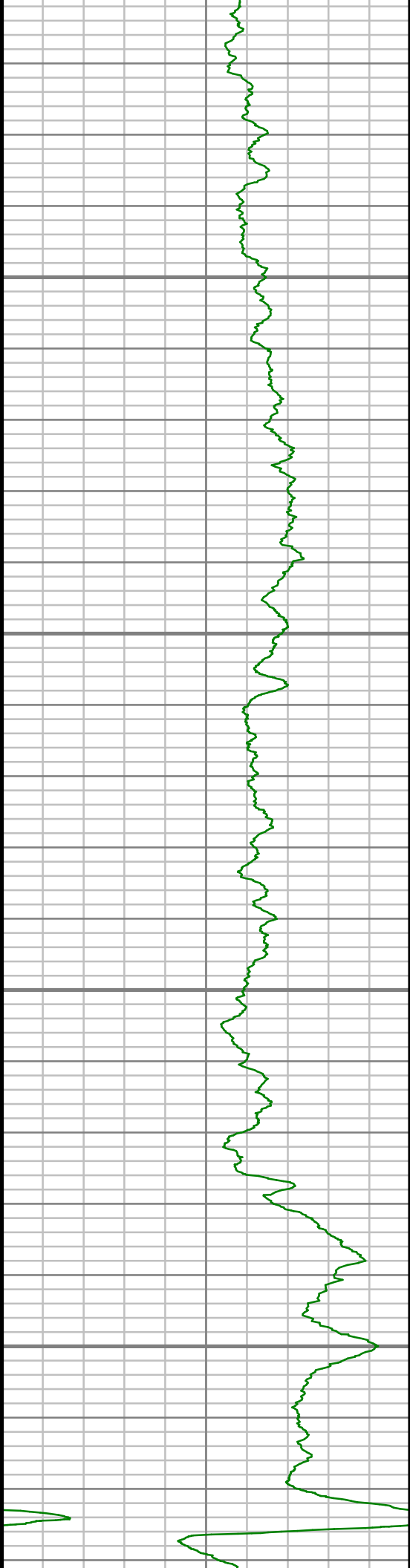
6700



S: 39 MD: 6505.00 ft Inc: 13.50
deg Az: 179.64 deg TVD:
6468.12 ft

S: 40 MD: 6600.00 ft Inc: 17.51
deg Az: 180.31 deg TVD:
6559.65 ft

S: 41 MD: 6695.00 ft Inc: 23.29
deg Az: 184.99 deg TVD:
6648.66 ft

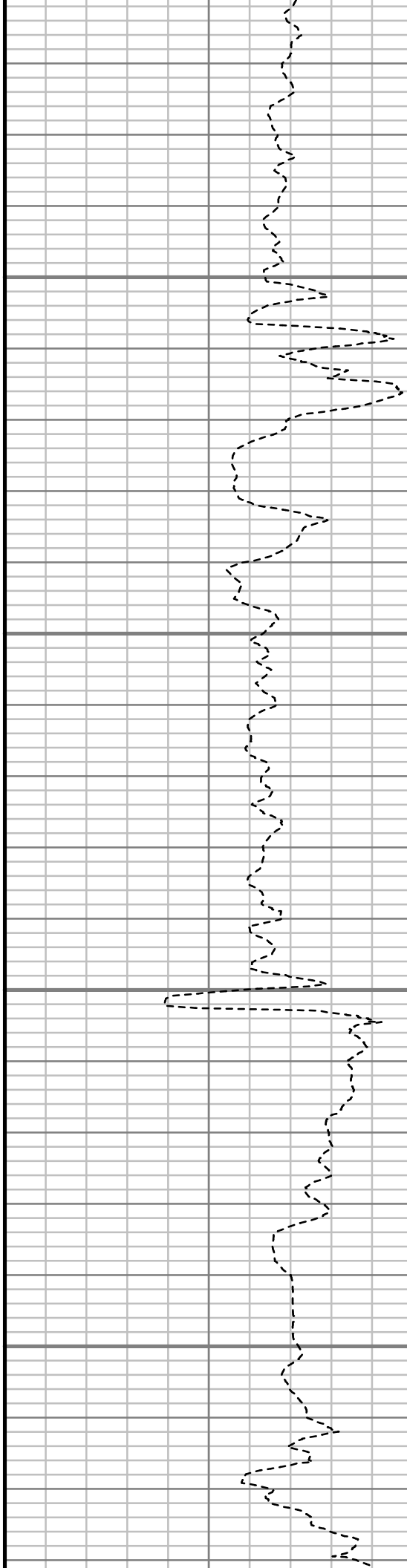


6750

6800

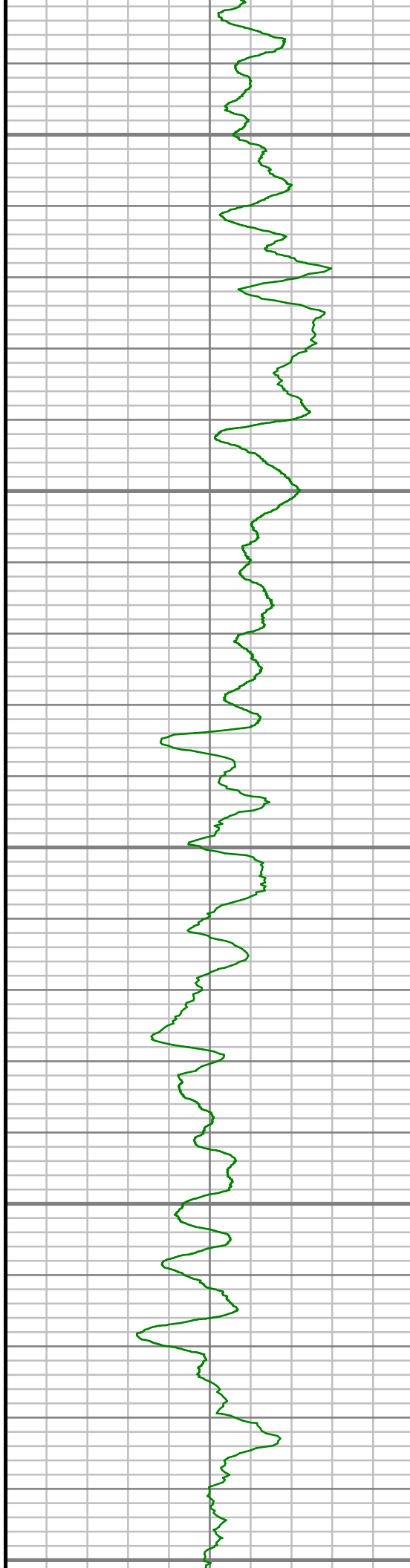
6850

6900



S: 42 MD: 6791.00 ft Inc: 32.08
deg Az: 187.15 deg TVD:
6733.58 ft

S: 43 MD: 6886.00 ft Inc: 44.31
deg Az: 184.26 deg TVD:
6808.11 ft



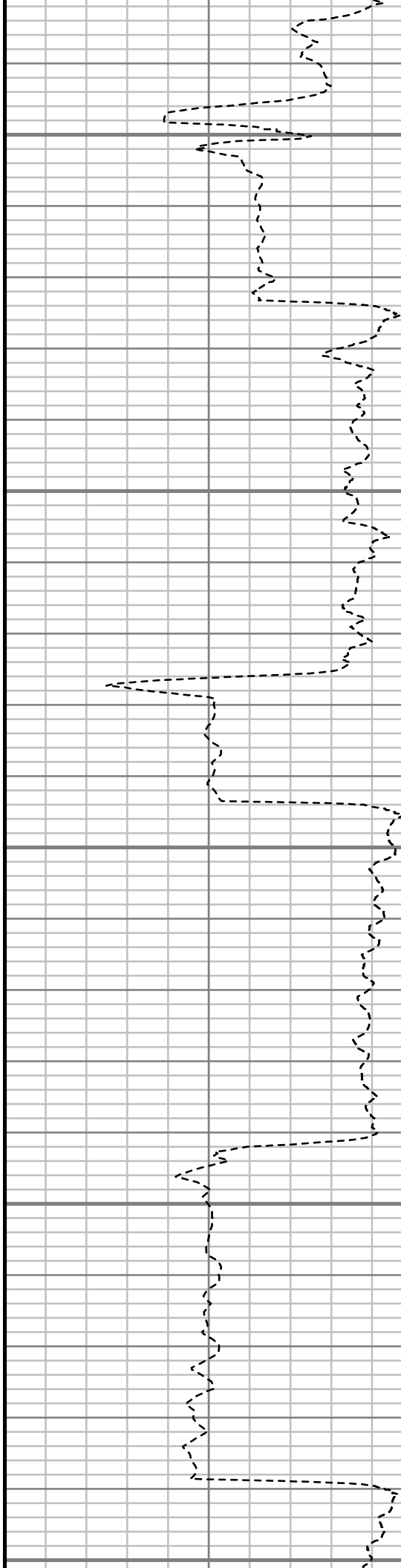
6950

7000

7050

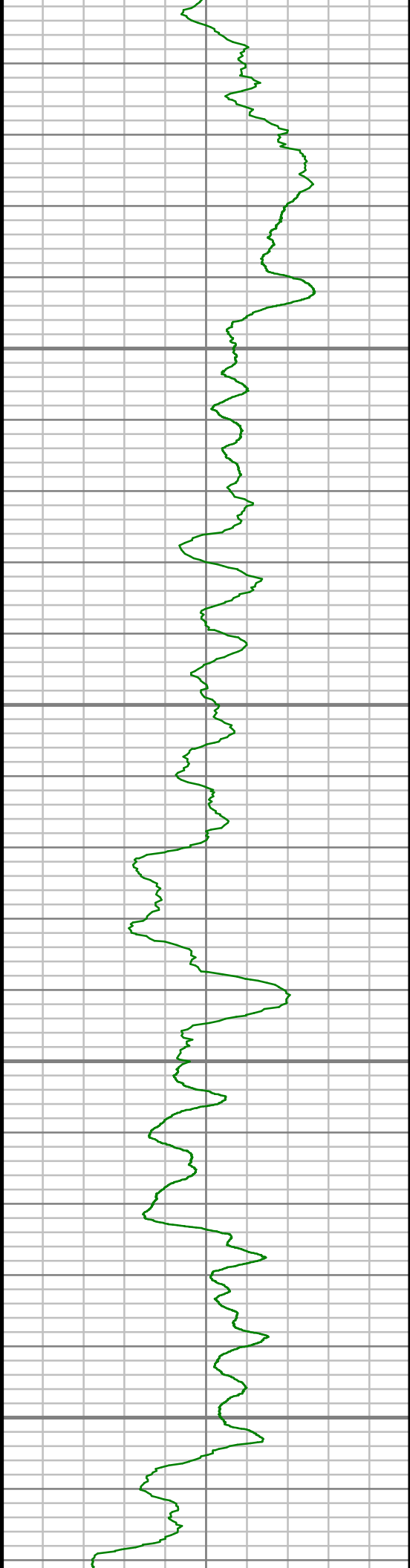
7100

7150



S: 44 MD: 6982.00 ft Inc: 52.82
deg Az: 180.75 deg TVD:
6871.60 ft

S: 45 MD: 7077.00 ft Inc: 63.23
deg Az: 180.24 deg TVD:
6921.84 ft

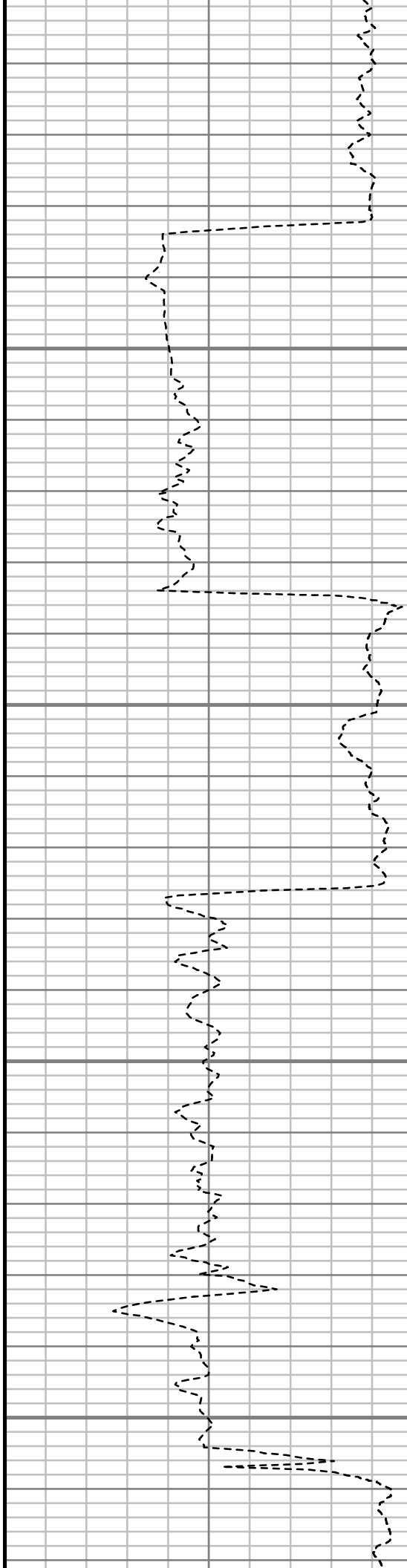


7200

7250

7300

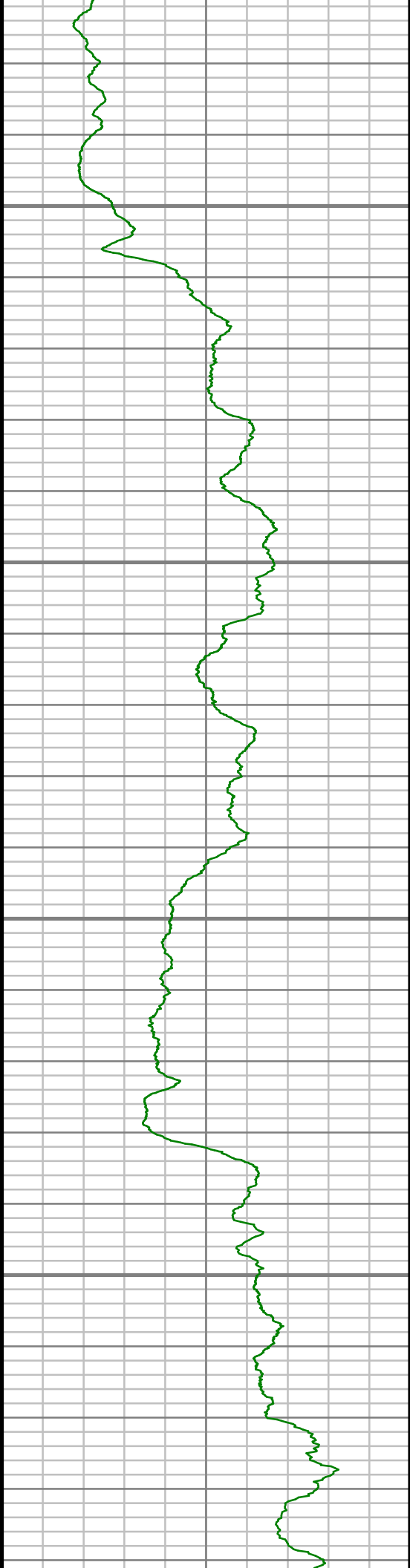
7350



S: 46 MD: 7172.00 ft Inc: 70.61
deg Az: 180.11 deg TVD:
6959.05 ft

S: 47 MD: 7267.00 ft Inc: 77.09
deg Az: 179.90 deg TVD:
6985.46 ft

S: 48 MD: 7363.00 ft Inc: 80.58
deg Az: 178.20 deg TVD:
7004.04 ft

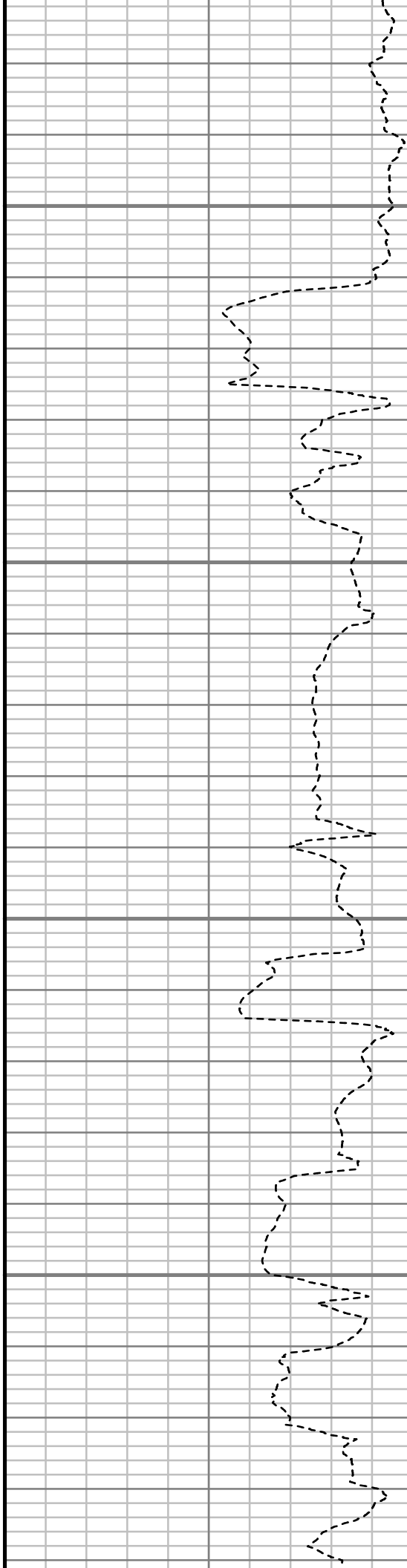


7400

7450

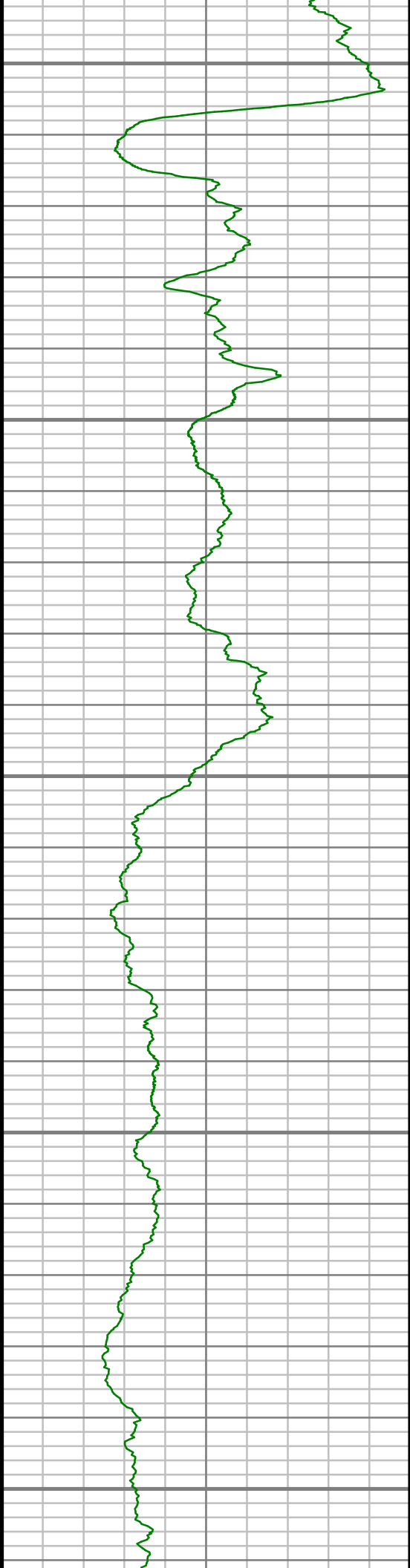
7500

7550



S: 49 MD: 7441.00 ft Inc: 85.80
deg Az: 178.90 deg TVD:
7013.29 ft

S: 50 MD: 7534.00 ft Inc: 86.58
deg Az: 178.41 deg TVD:
7019.47 ft



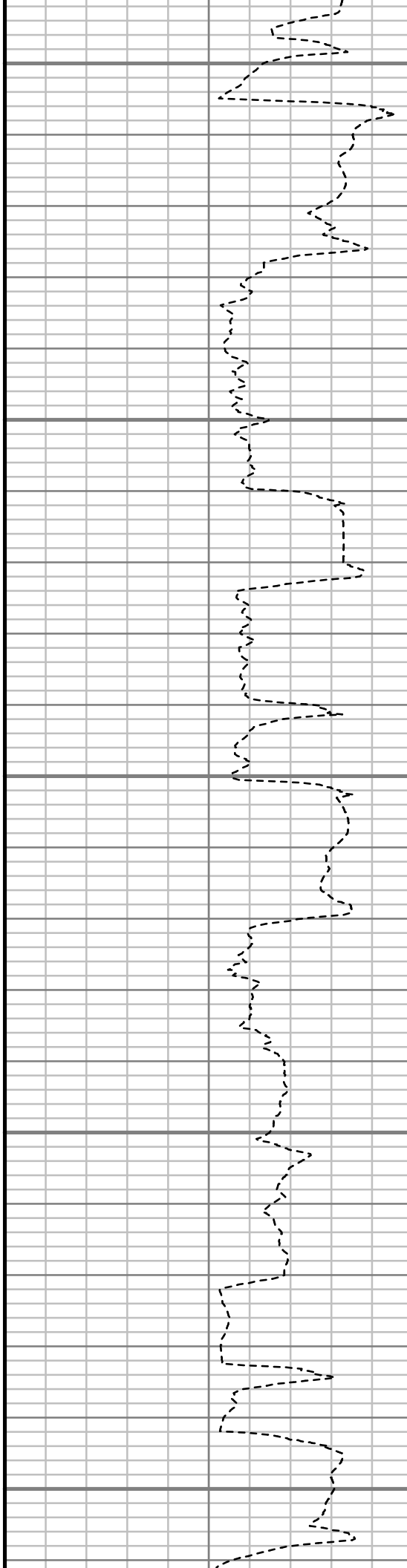
7600

7650

7700

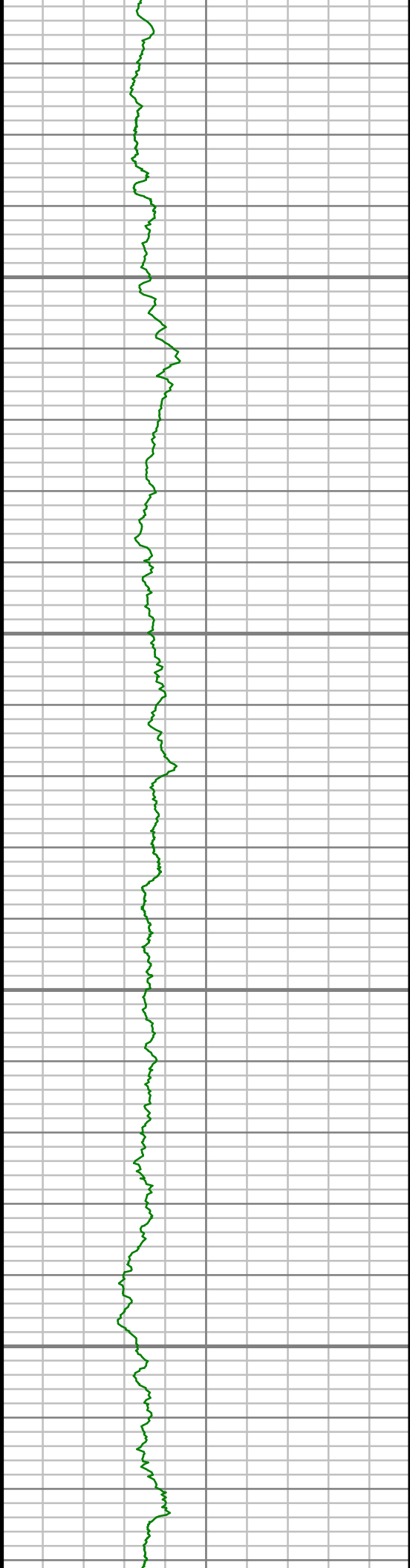
7750

7800



S: 51 MD: 7627.00 ft Inc: 88.15
deg Az: 179.18 deg TVD:
7023.74 ft

S: 52 MD: 7720.00 ft Inc: 90.64
deg Az: 178.90 deg TVD:
7024.72 ft

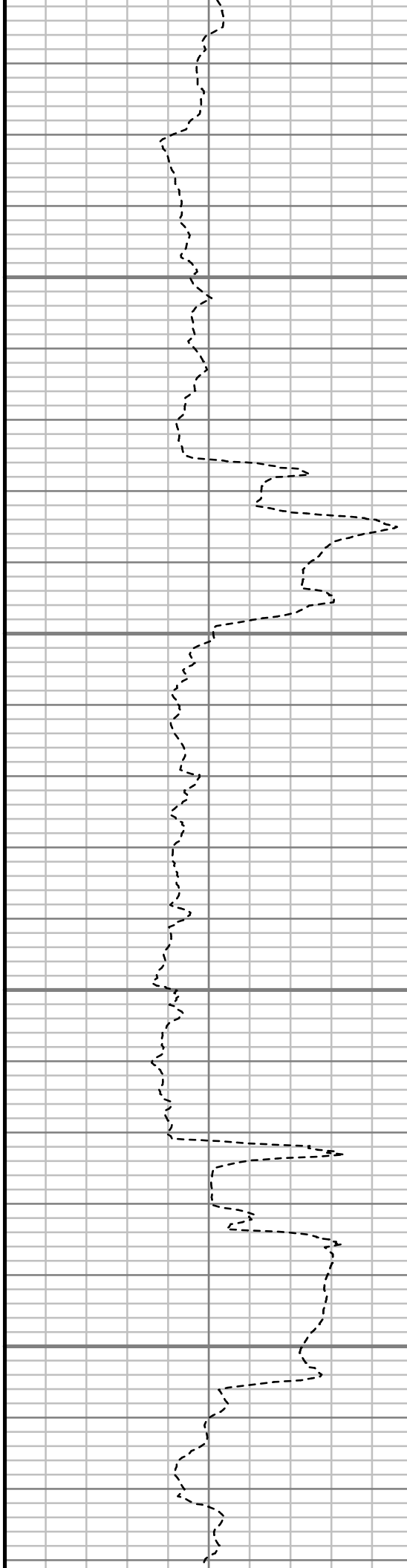


7850

7900

7950

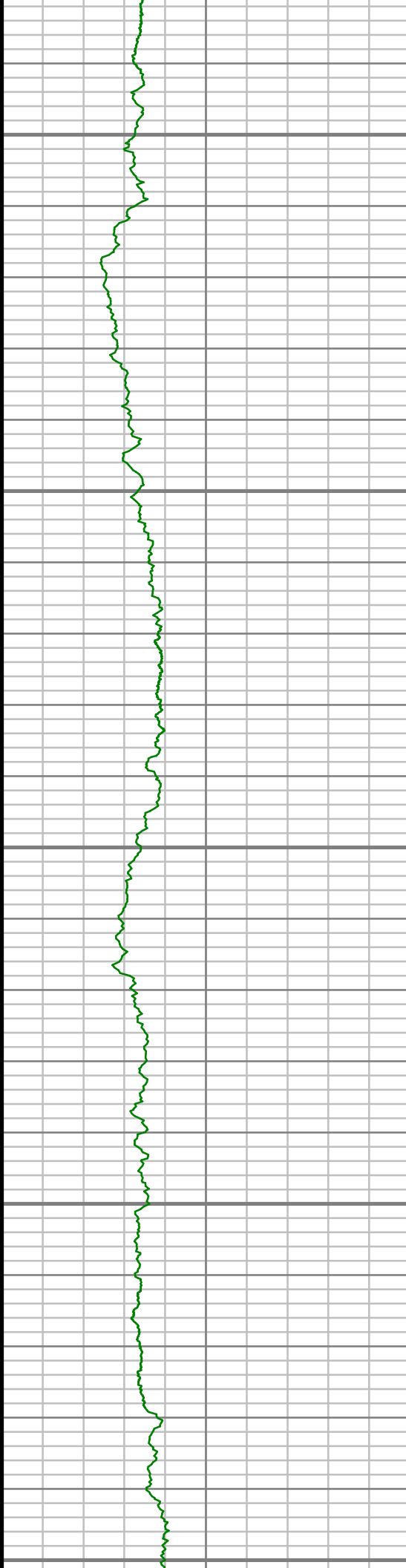
8000



S: 53 MD: 7813.00 ft Inc: 90.40
deg Az: 180.05 deg TVD:
7023.88 ft

S: 54 MD: 7908.00 ft Inc: 90.20
deg Az: 179.35 deg TVD:
7023.37 ft

S: 55 MD: 8003.00 ft Inc: 91.24
deg Az: 178.25 deg TVD:
7022.18 ft



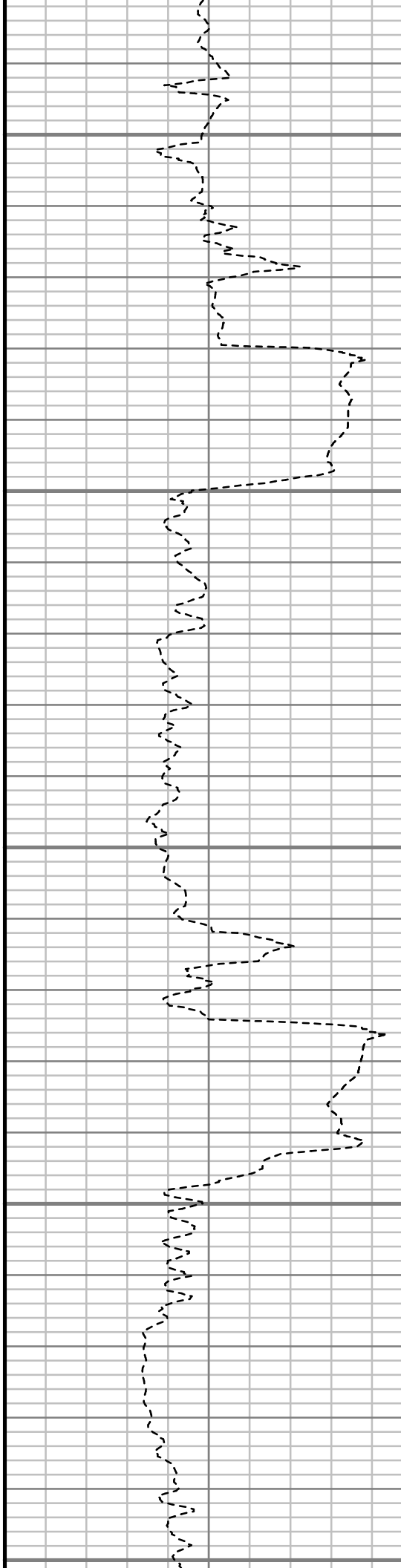
8050

8100

8150

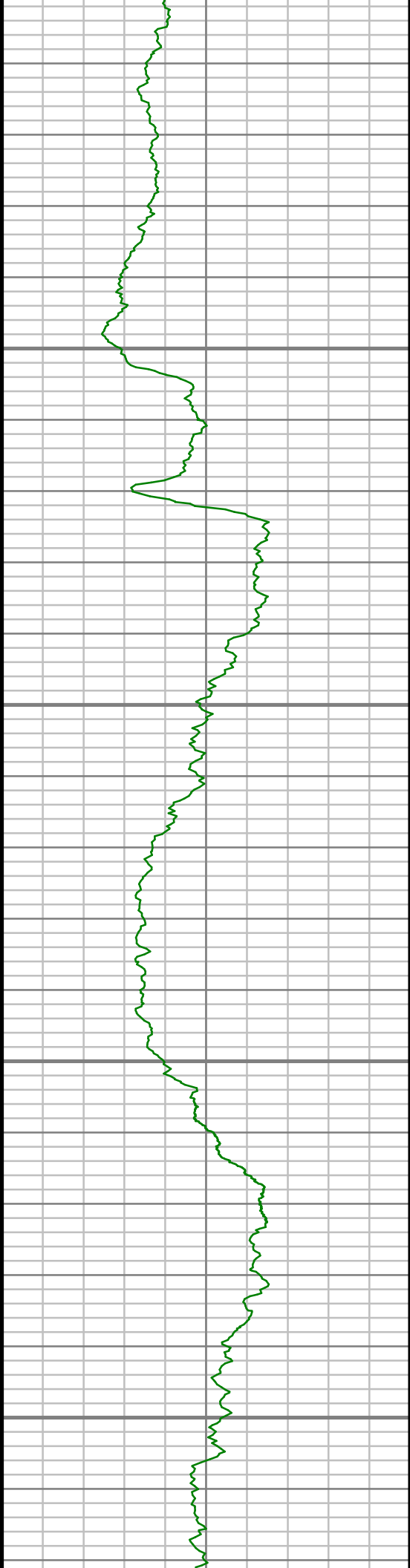
8200

8250



S: 56 MD: 8099.00 ft Inc: 91.98
deg Az: 179.60 deg TVD:
7019.48 ft

S: 57 MD: 8194.00 ft Inc: 91.01
deg Az: 179.75 deg TVD:
7017.00 ft

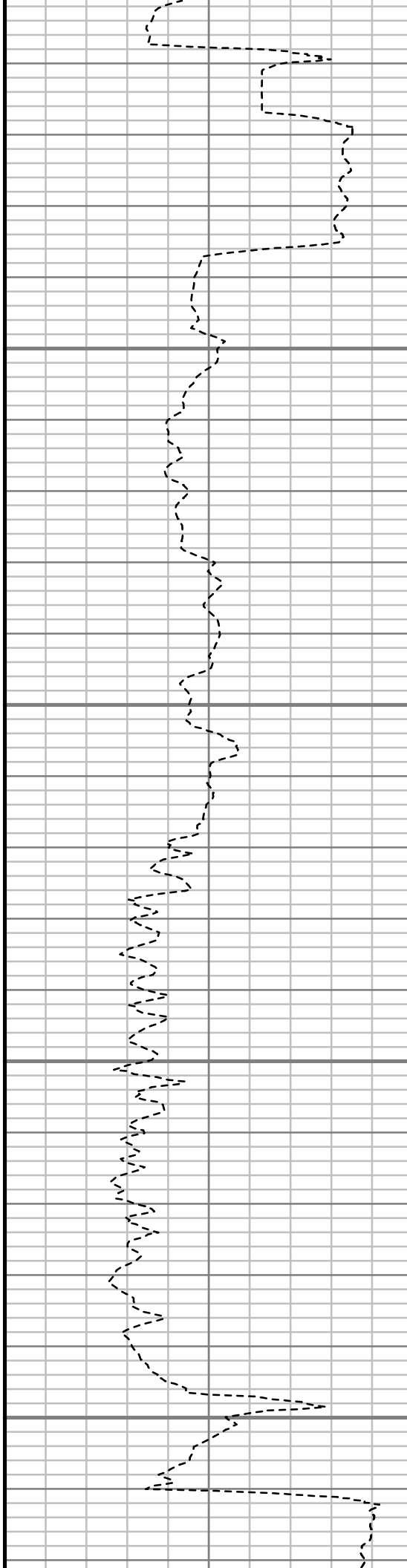


8300

8350

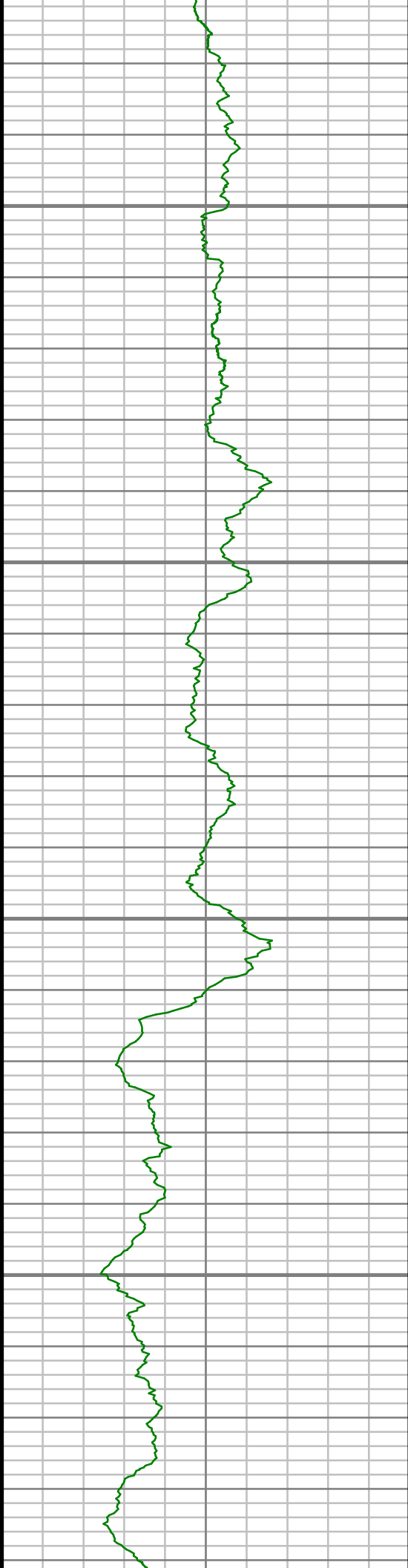
8400

8450



S: 58 MD: 8289.00 ft Inc: 91.01
deg Az: 180.66 deg TVD:
7015.33 ft

S: 59 MD: 8384.00 ft Inc: 91.48
deg Az: 180.16 deg TVD:
7013.27 ft

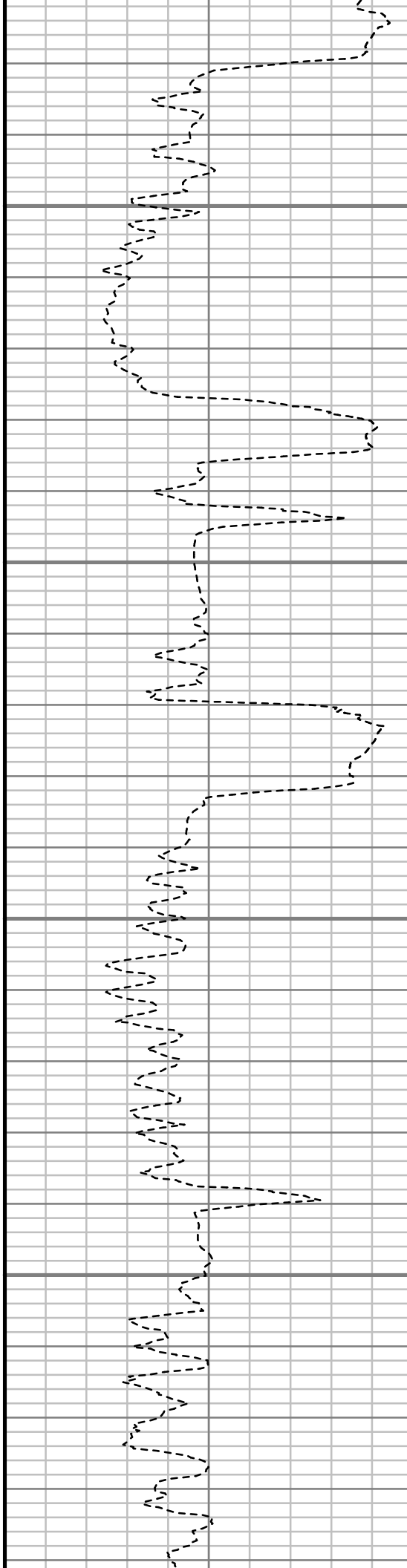


8500

8550

8600

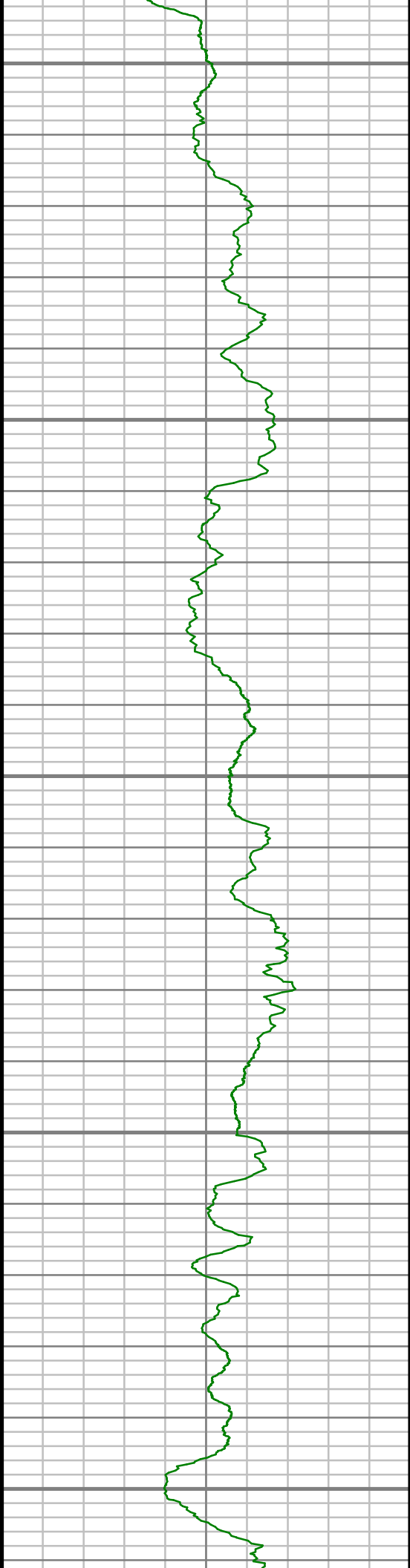
8650



S: 60 MD: 8479.00 ft Inc: 90.60
deg Az: 180.87 deg TVD:
7011.54 ft

S: 61 MD: 8575.00 ft Inc: 88.79
deg Az: 181.78 deg TVD:
7012.05 ft

S: 62 MD: 8670.00 ft Inc: 87.14
deg Az: 180.85 deg TVD:
7015.42 ft



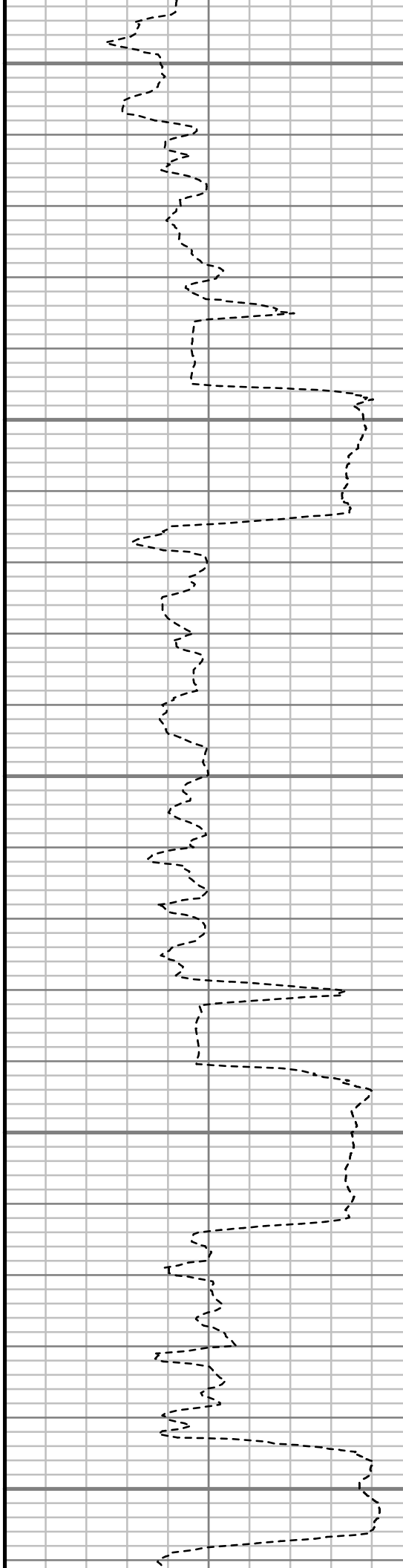
8700

8750

8800

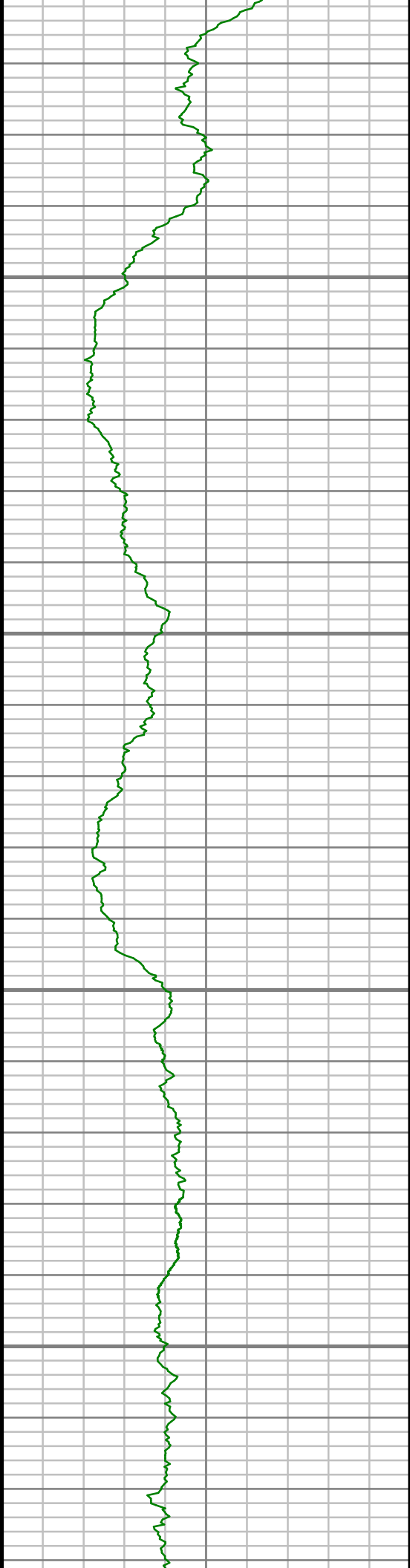
8850

8900



S: 63 MD: 8766.00 ft Inc: 87.64
deg Az: 180.73 deg TVD:
7019.79 ft

S: 64 MD: 8861.00 ft Inc: 88.89
deg Az: 180.61 deg TVD:
7022.66 ft

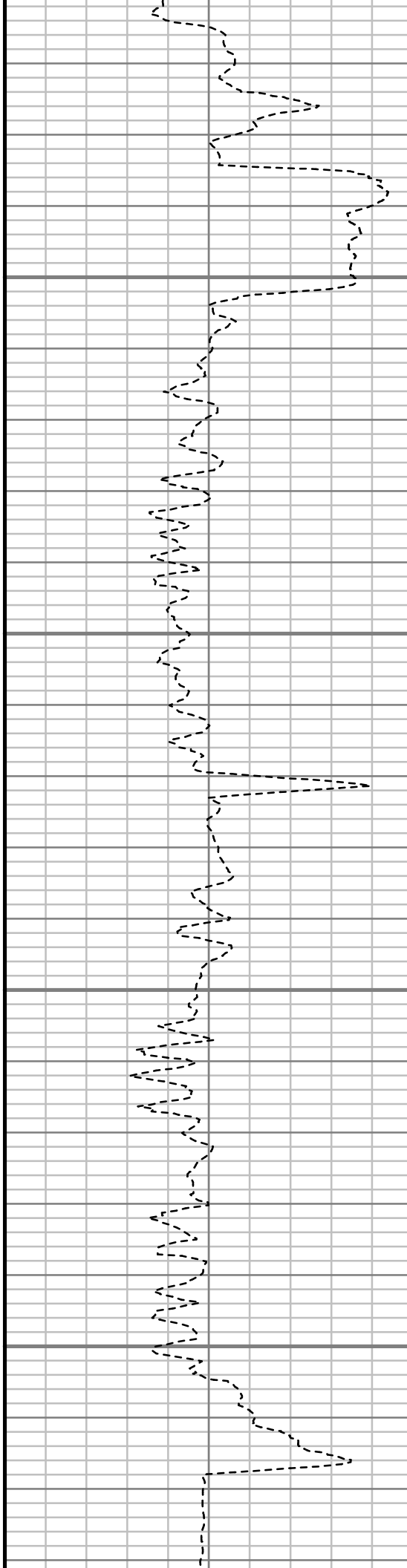


8950

9000

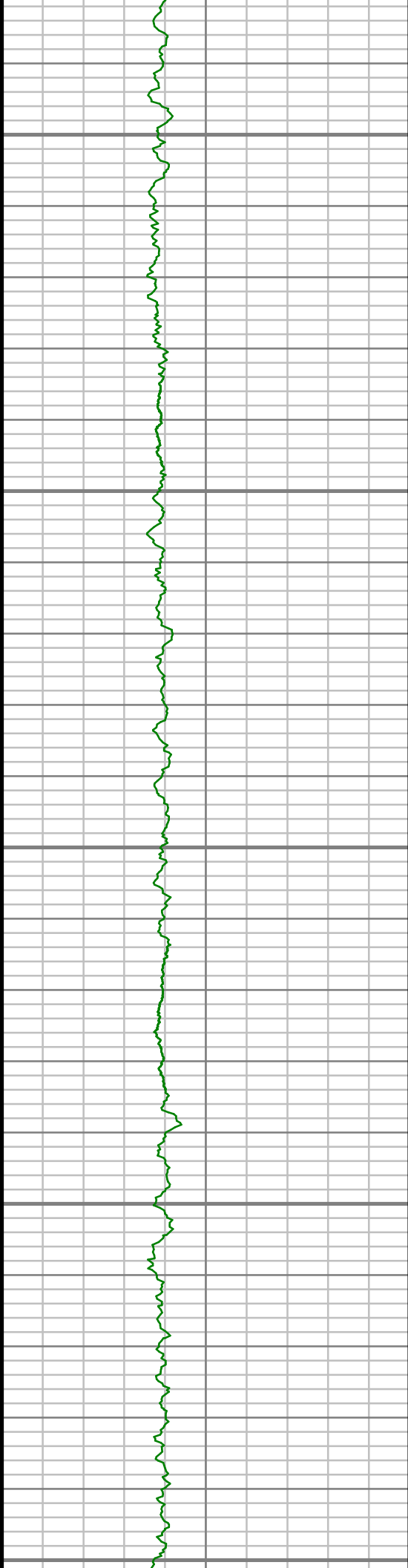
9050

9100



S: 65 MD: 8956.00 ft Inc: 91.11
deg Az: 180.03 deg TVD:
7022.65 ft

S: 66 MD: 9051.00 ft Inc: 90.64
deg Az: 178.73 deg TVD:
7021.20 ft



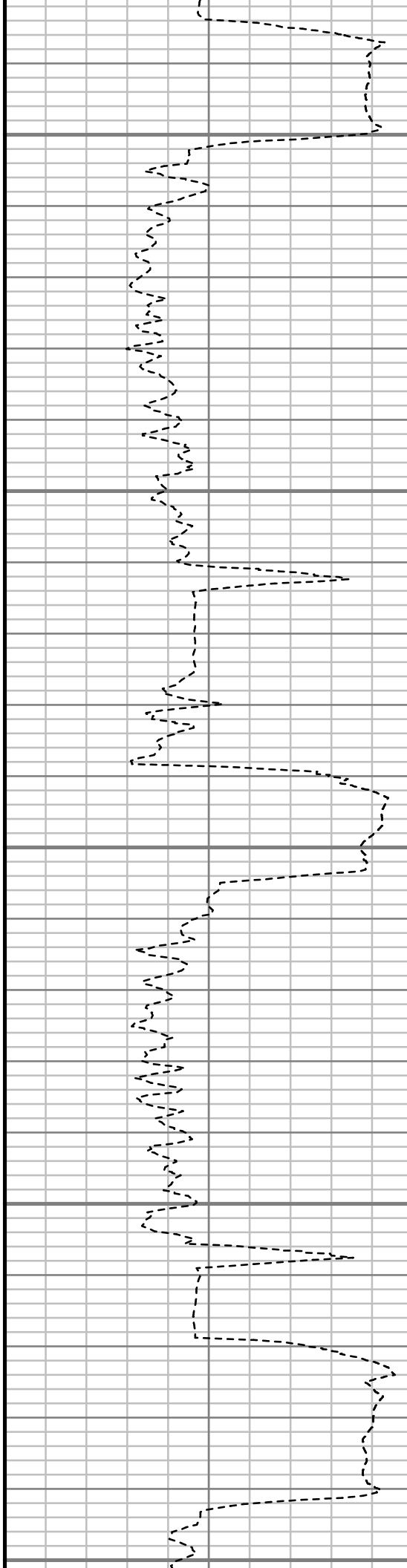
9150

9200

9250

9300

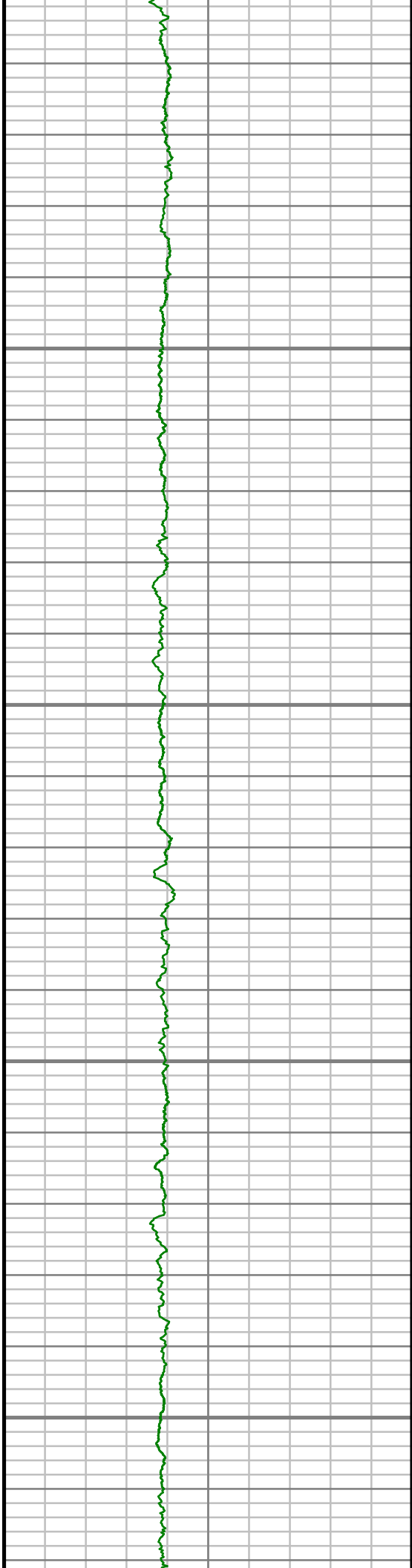
9350



S: 67 MD: 9146.00 ft Inc: 91.75
deg Az: 179.01 deg TVD:
7019.23 ft

S: 68 MD: 9241.00 ft Inc: 91.41
deg Az: 178.26 deg TVD:
7016.61 ft

S: 69 MD: 9337.00 ft Inc: 91.04
deg Az: 177.90 deg TVD:
7014.55 ft

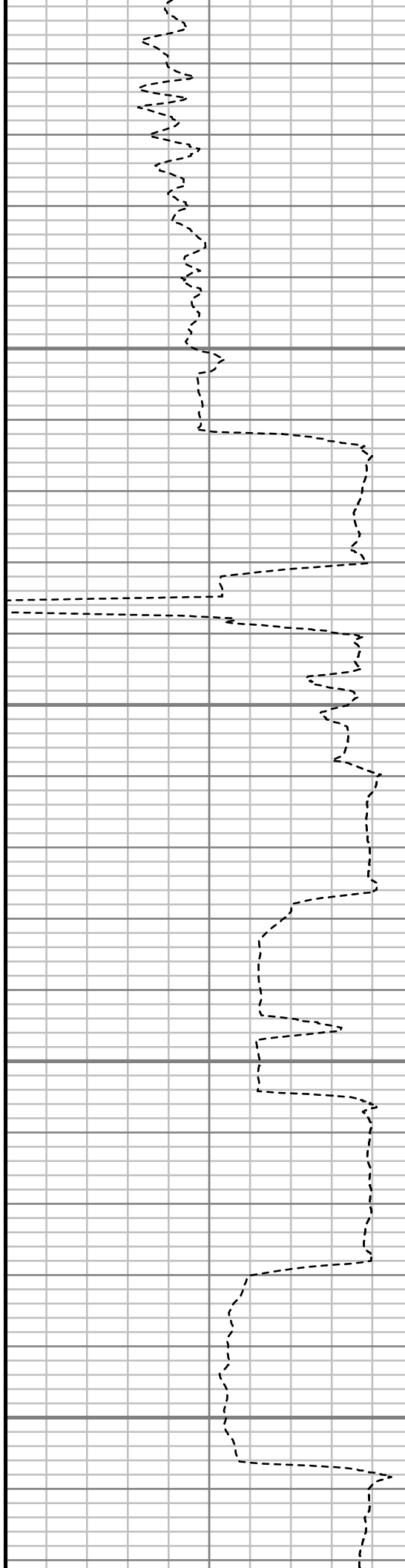


9400

9450

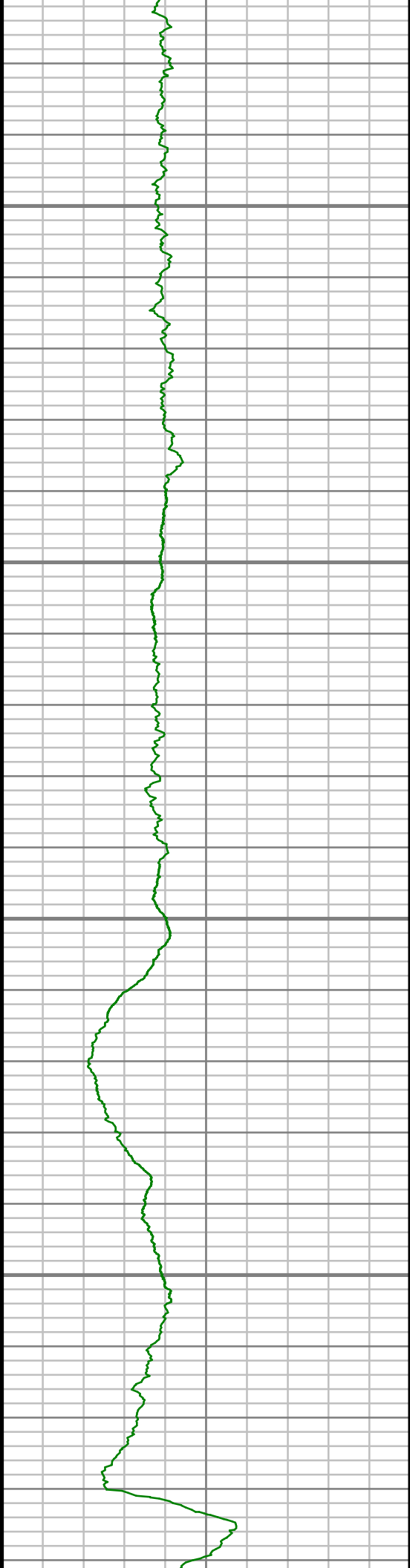
9500

9550



S: 70 MD: 9432.00 ft Inc: 90.10
deg Az: 176.66 deg TVD:
7013.61 ft

S: 71 MD: 9527.00 ft Inc: 89.53
deg Az: 178.67 deg TVD:
7013.91 ft

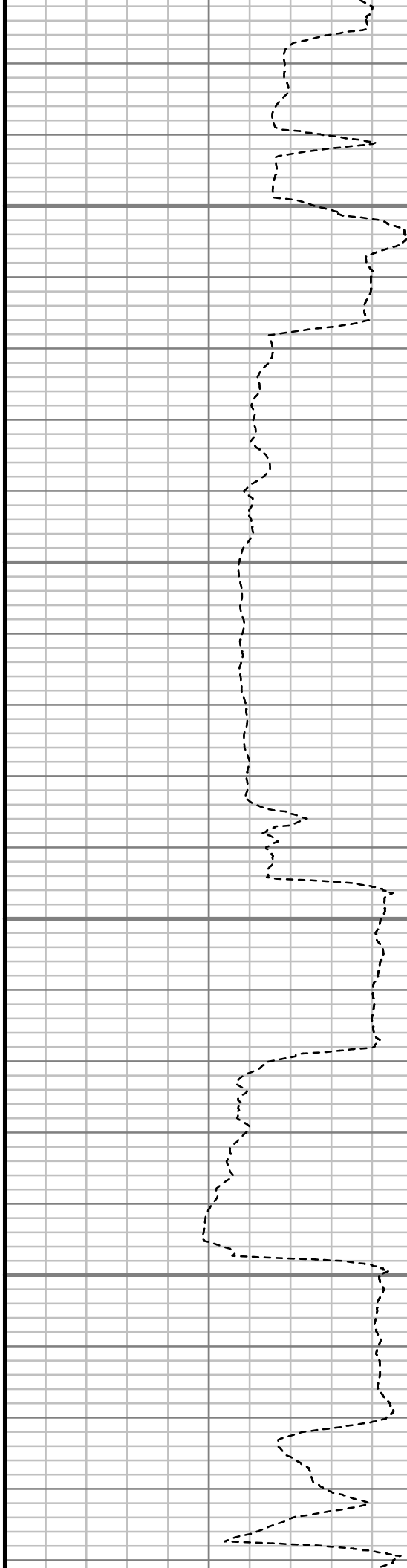


9600

9650

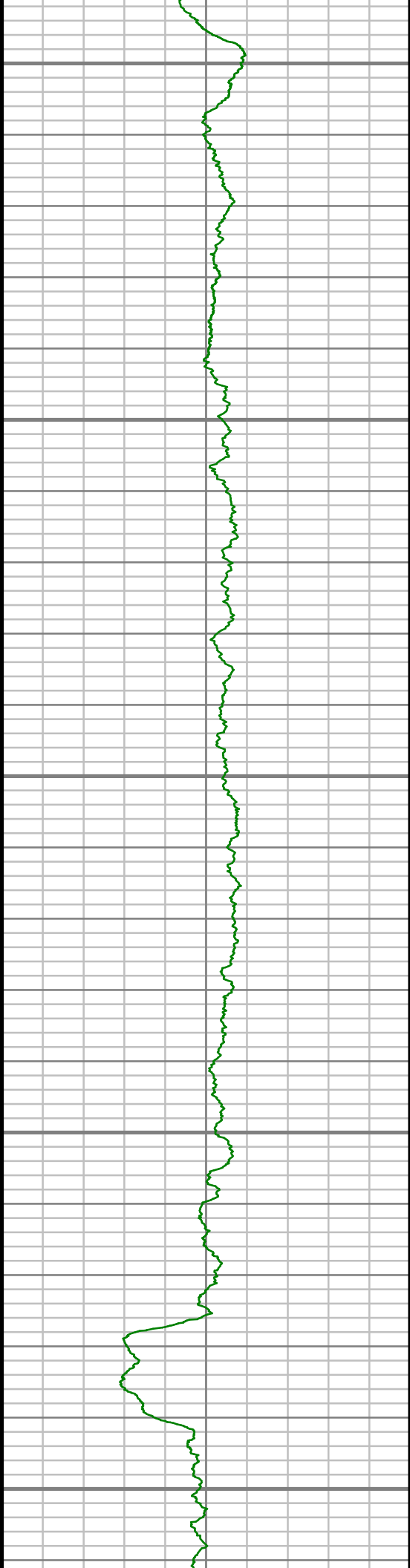
9700

9750



S: 72 MD: 9622.00 ft Inc: 88.76
deg Az: 178.58 deg TVD:
7015.33 ft

S: 73 MD: 9718.00 ft Inc: 90.94
deg Az: 177.40 deg TVD:
7015.58 ft



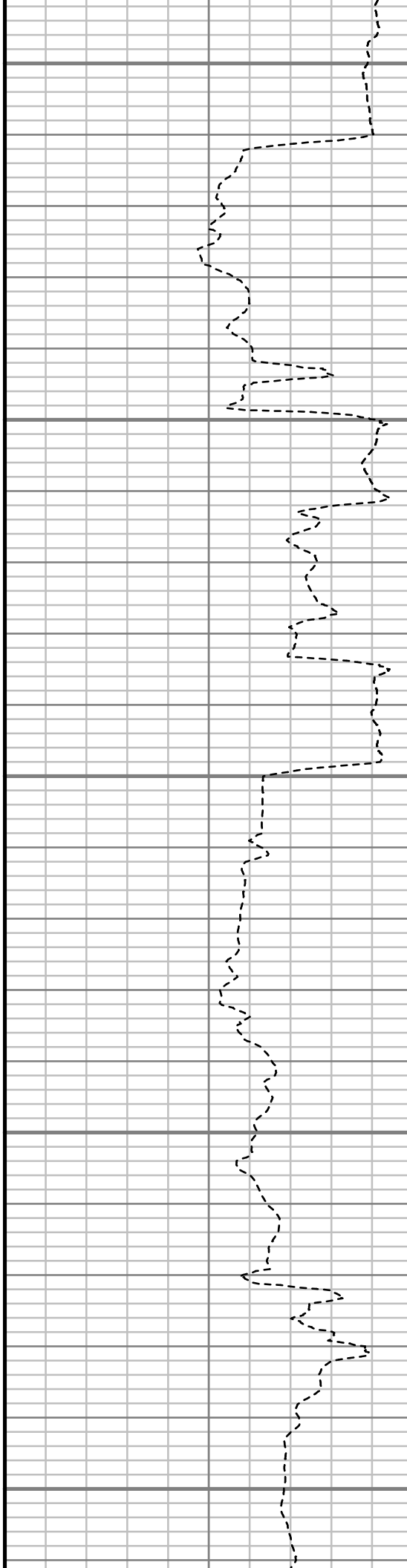
9800

9850

9900

9950

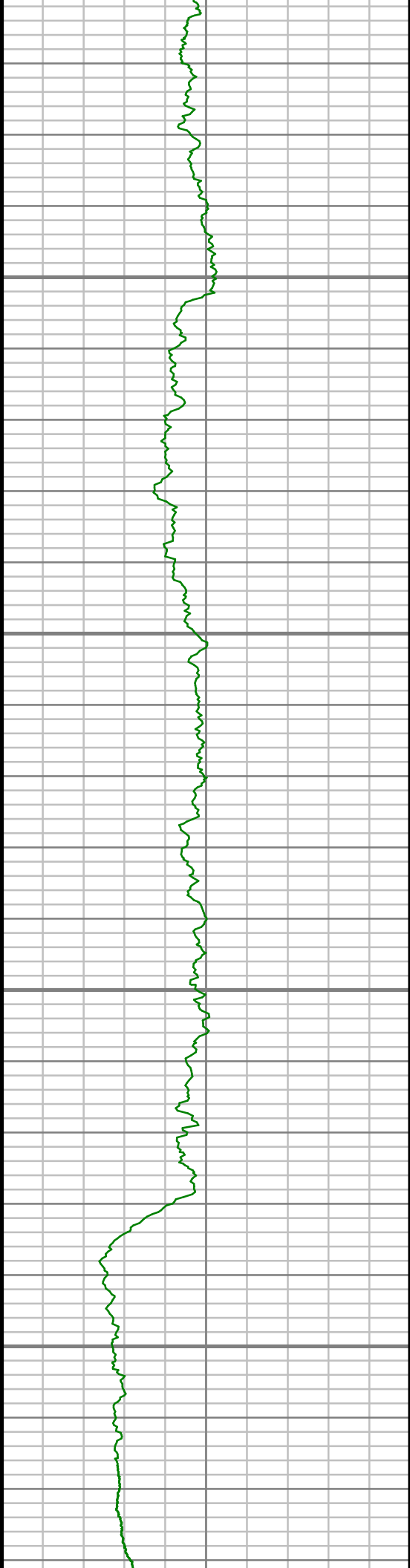
10000



S: 74 MD: 9813.00 ft Inc: 90.37
deg Az: 180.51 deg TVD:
7014.50 ft

S: 75 MD: 9908.00 ft Inc: 89.66
deg Az: 184.11 deg TVD:
7014.47 ft

S: 76 MD: 10003.00 ft Inc:
89.09 deg Az: 181.40 deg TVD:
7015.50 ft

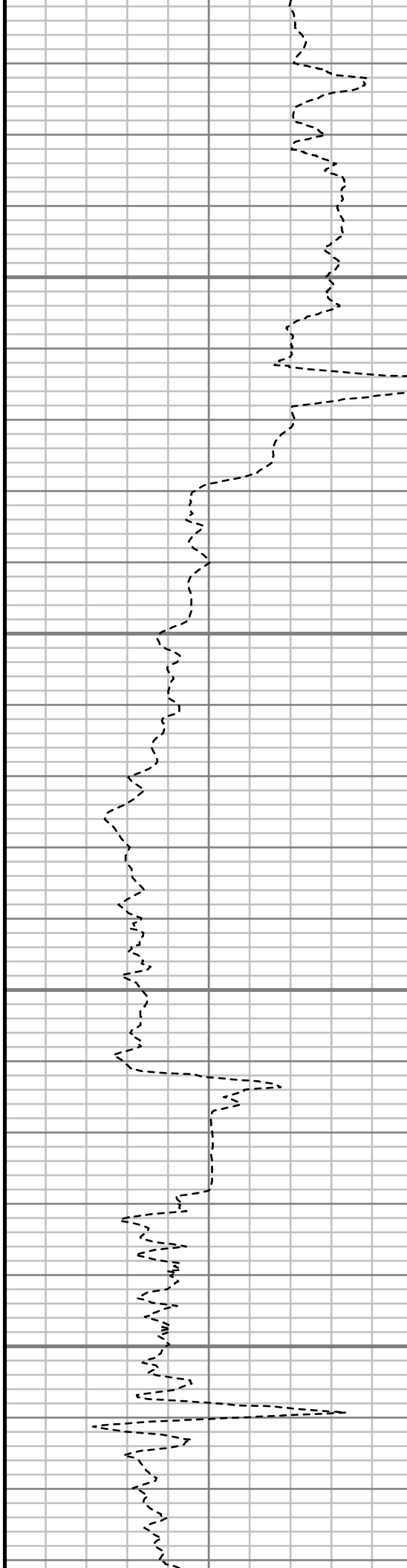


10050

10100

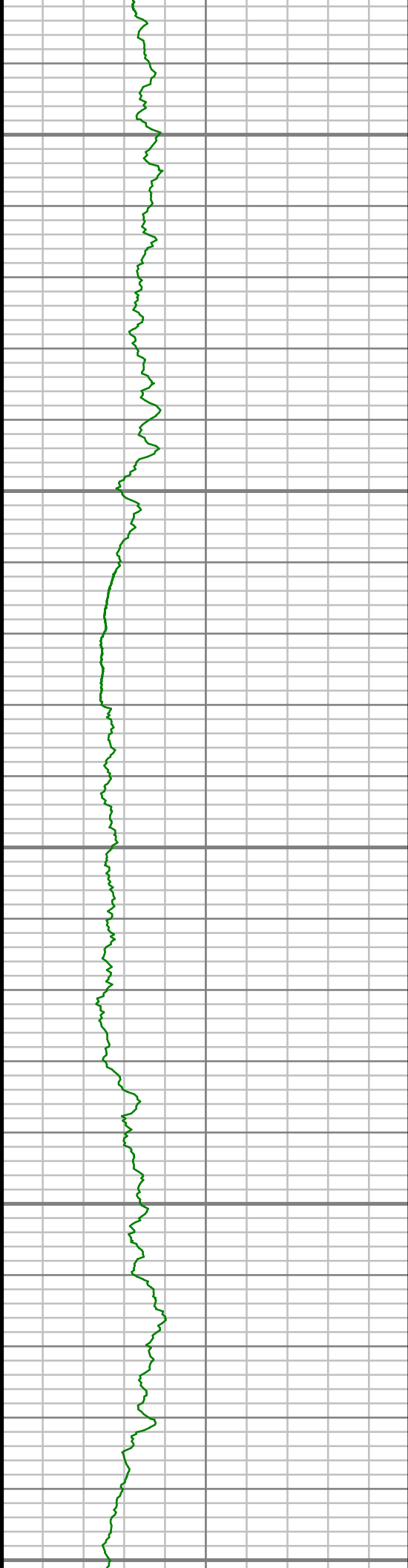
10150

10200



S: 77 MD: 10098.00 ft Inc:
89.46 deg Az: 180.83 deg TVD:
7016.69 ft

S: 78 MD: 10194.00 ft Inc:
90.87 deg Az: 181.14 deg TVD:
7016.41 ft



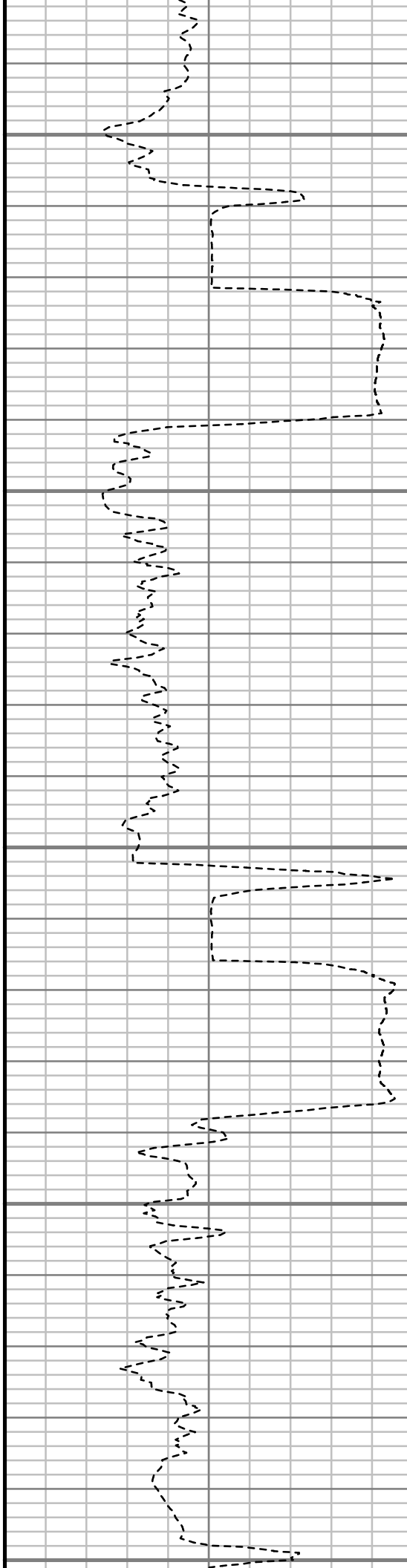
10250

10300

10350

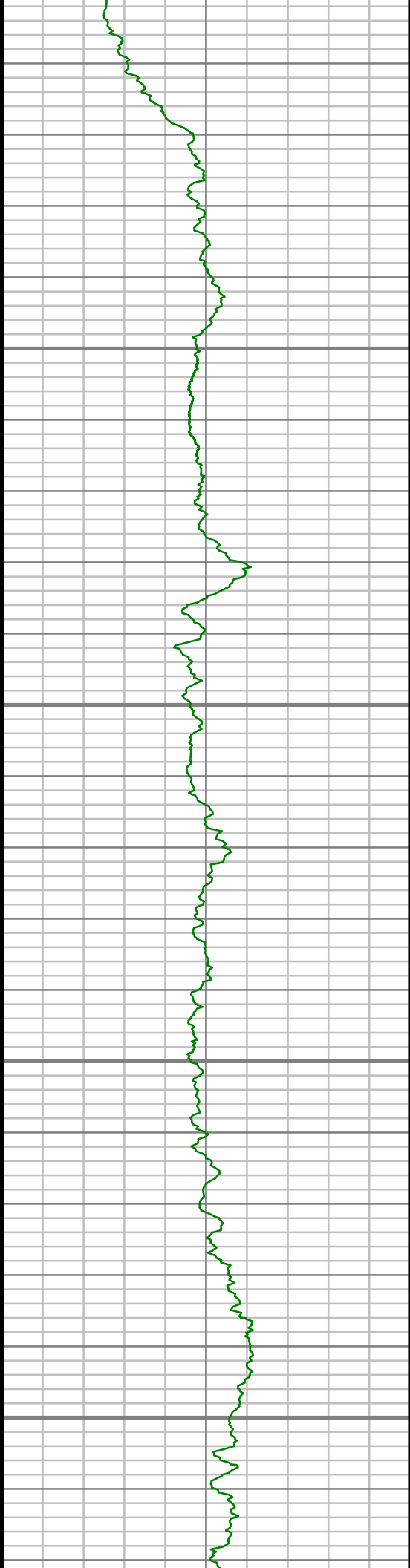
10400

10450



S: 79 MD: 10289.00 ft Inc:
91.34 deg Az: 181.75 deg TVD:
7014.58 ft

S: 80 MD: 10384.00 ft Inc:
89.33 deg Az: 181.64 deg TVD:
7014.02 ft

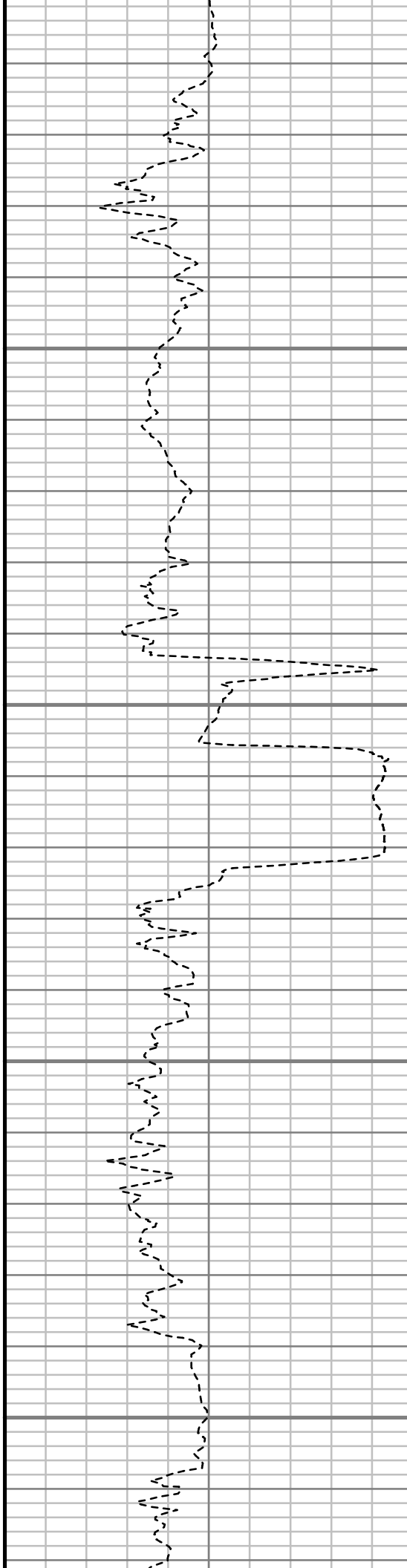


10500

10550

10600

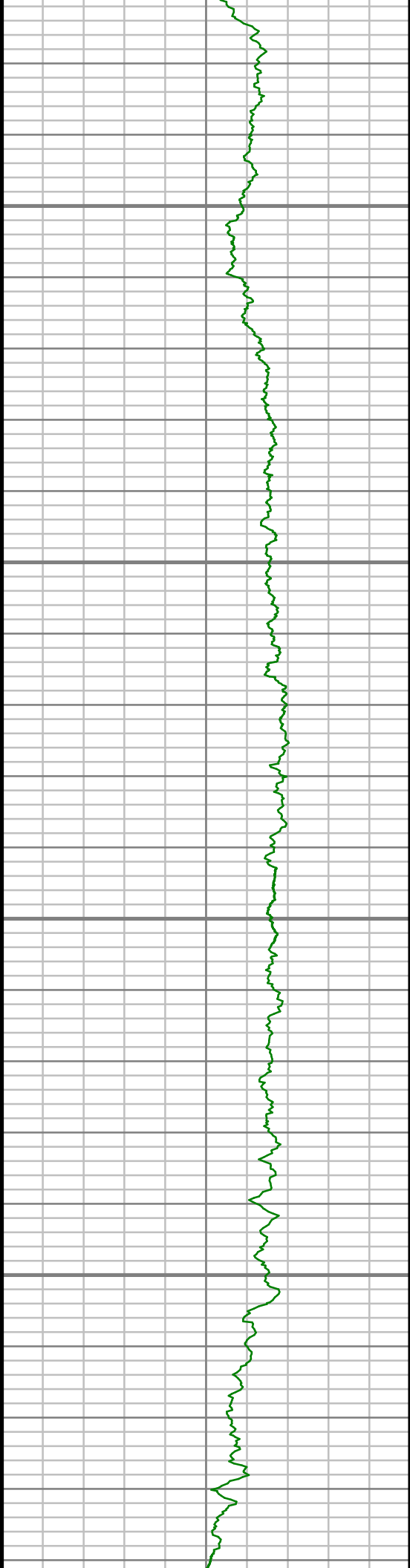
10650



S: 81 MD: 10480.00 ft Inc:
89.80 deg Az: 181.48 deg TVD:
7014.75 ft

S: 82 MD: 10575.00 ft Inc:
88.59 deg Az: 181.33 deg TVD:
7016.09 ft

S: 83 MD: 10670.00 ft Inc:

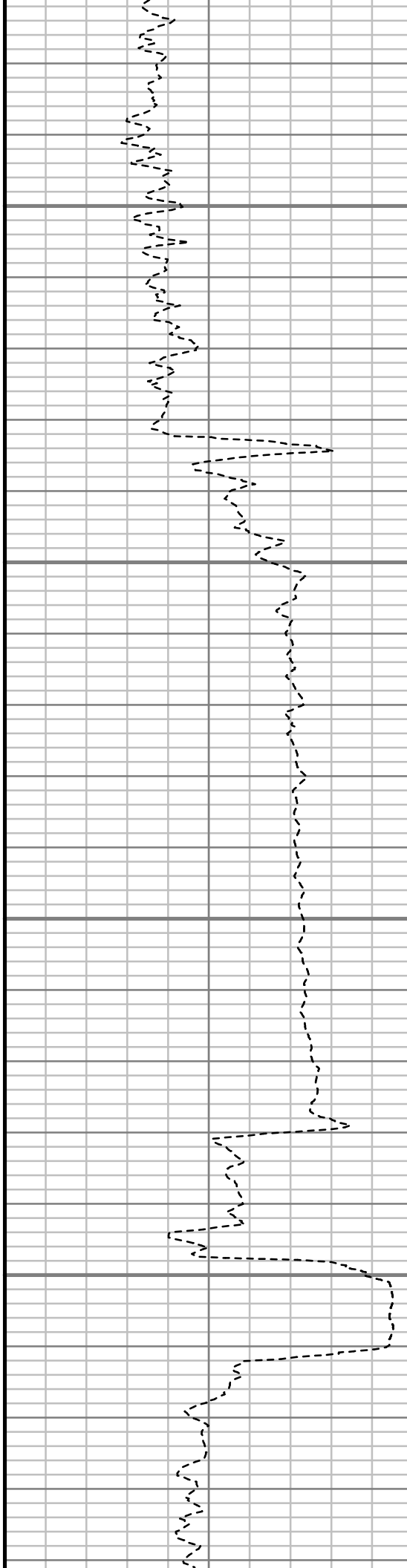


10700

10750

10800

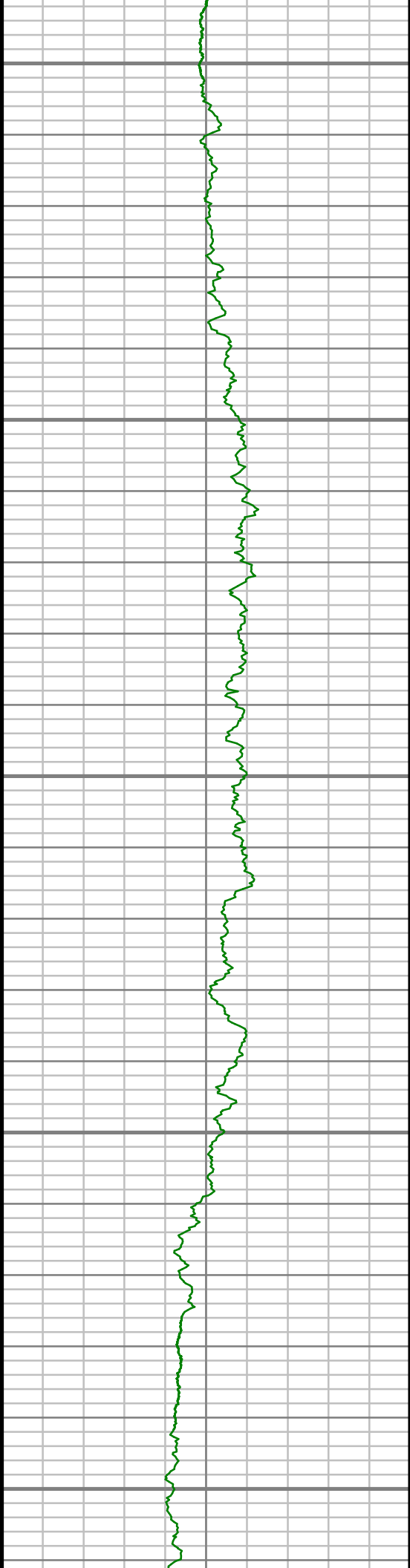
10850



S: 83 MD: 10670.00 ft Inc:
89.33 deg Az: 180.90 deg TVD:
7017.81 ft

S: 84 MD: 10765.00 ft Inc:
89.97 deg Az: 180.08 deg TVD:
7018.40 ft

S: 85 MD: 10860.00 ft Inc:
89.63 deg Az: 181.11 deg TVD:
7018.73 ft



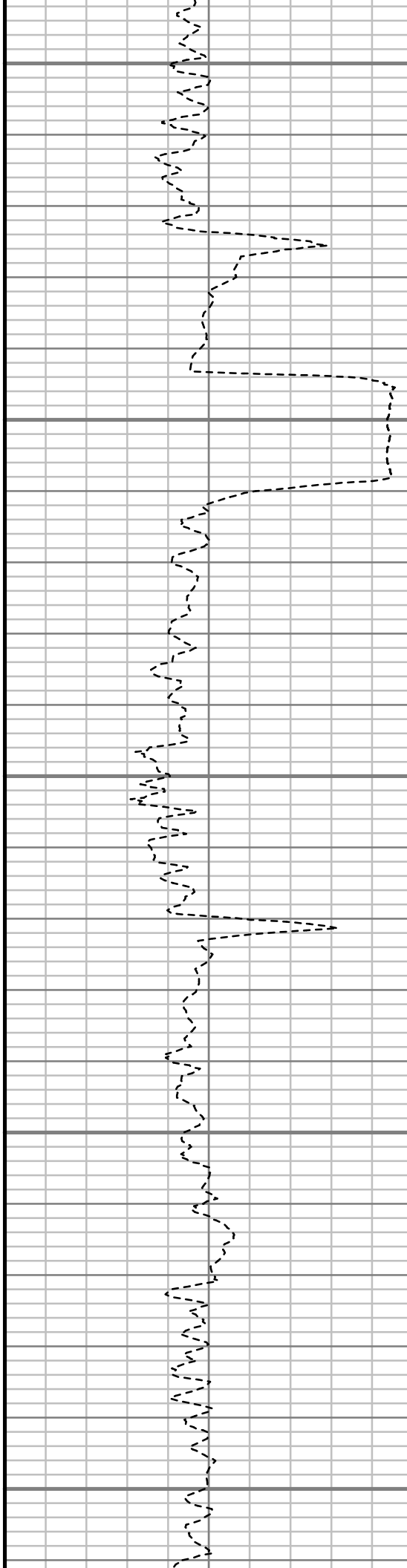
10900

10950

11000

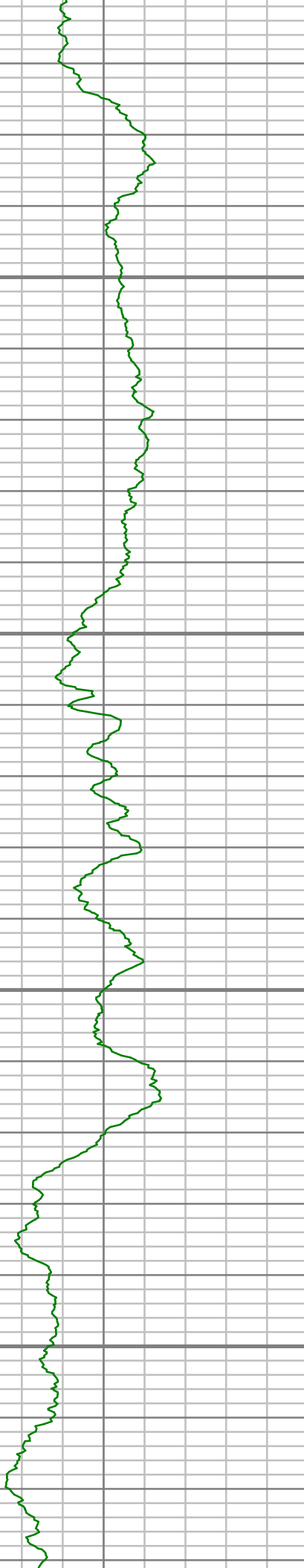
11050

11100



S: 86 MD: 10956.00 ft Inc:
88.56 deg Az: 180.94 deg TVD:
7020.25 ft

S: 87 MD: 11051.00 ft Inc:
88.76 deg Az: 180.23 deg TVD:
7022.48 ft

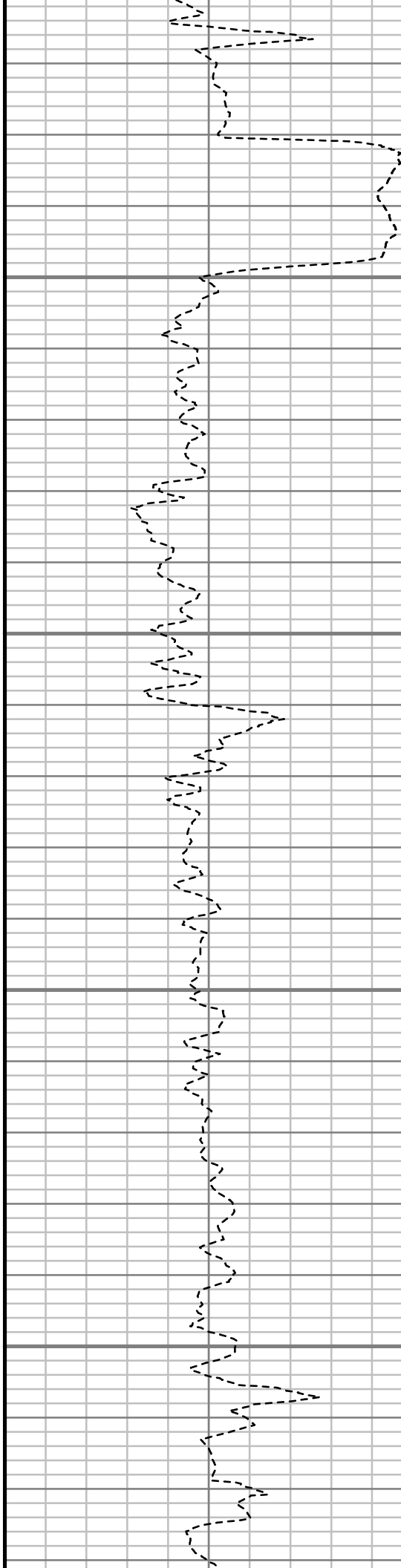


11150

11200

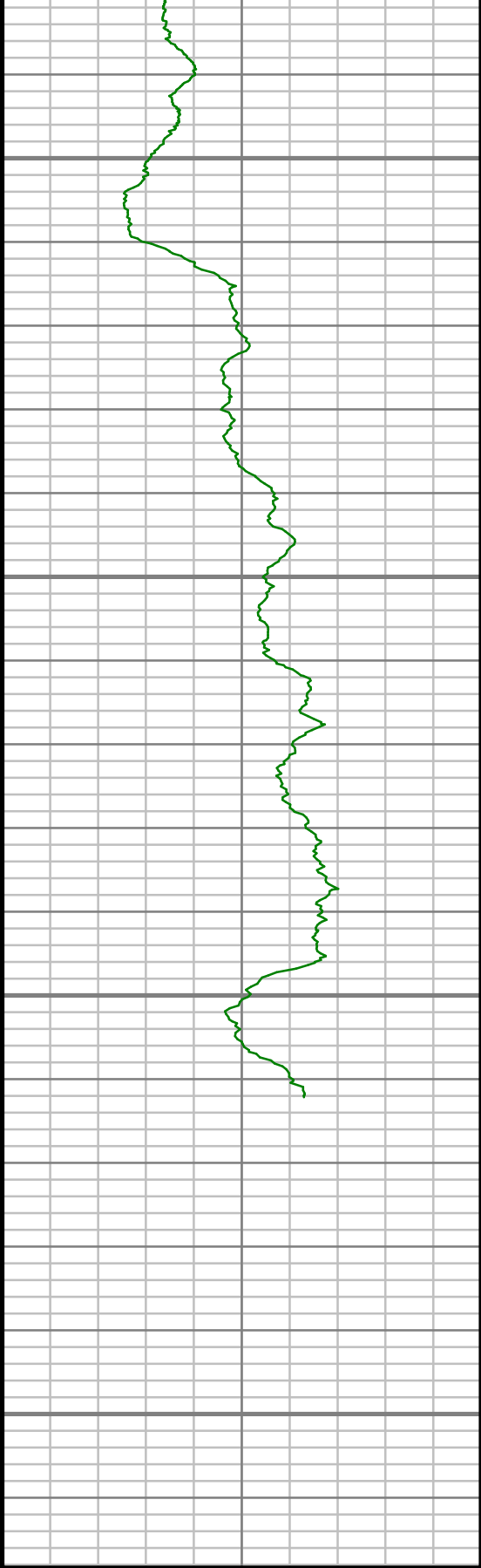
11250

11300



S: 88 MD: 11146.00 ft Inc:
87.15 deg Az: 180.20 deg TVD:
7025.87 ft

S: 89 MD: 11242.00 ft Inc:
87.08 deg Az: 179.81 deg TVD:
7030.71 ft



Gamma Ray (GR)

0 Unit = aapi 150

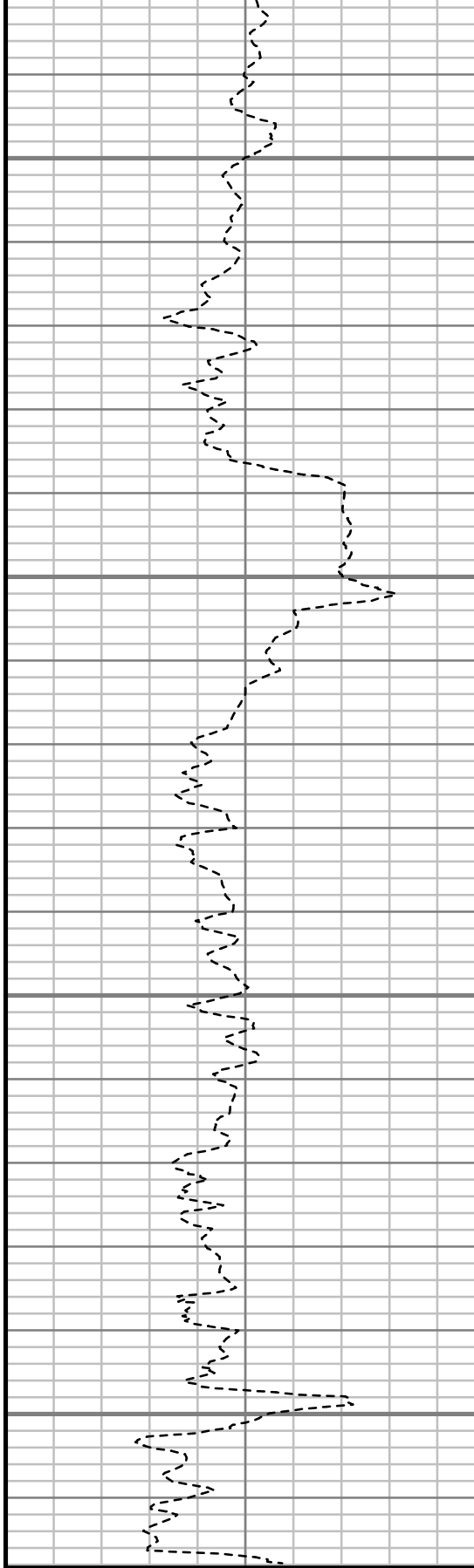
11350

11400

11450

11500

MEASURED DEPTH
1:240 (ft)



Rate of Penetration (ROP)

400 Unit = ft/hr 0

S: 90 MD: 11337.00 ft Inc:
87.21 deg Az: 179.06 deg TVD:
7035.44 ft

S: 91 MD: 11432.00 ft Inc:
87.21 deg Az: 179.02 deg TVD:
7040.06 ft

S: 92 MD: 11455.00 ft Inc:
87.32 deg Az: 178.66 deg TVD:
7041.16 ft

Comments

MWD Survey Report

Well Location	NEWNAM
Well Name	NEWNAM 2J-32H-C264
Survey Date	1/20/2015
Latitude	40°6'5.278"N
Longitude	104°34'42.193"W
Btotal	52497 nT
Dip	66.71 deg
Magnetic Declination	8.36 deg
North Reference	True North
Grid Correction	None
Depth Reference	RKB (13.00 ft)
Calculation Method	Minimum Curvature
Section (VS) Ref	0.00N (ft), 0.00E (ft), 180.00Azim (deg)
Operator(s)	J. PARISEE, M. SMITH, T. MORGAN

Well Notes

MD	Inc	Azim	TVD	VS	+N/-S	+E/-W	Closure Direction	Closure Distance	DLS
ft	deg	deg	ft	ft	ft	ft	deg	ft	"/100ft
0.00	0.00	0.00	0.00	0.00	0.00	0.00	0.00	0.00	Invalid
486.00	4.64	51.72	485.47	-12.19	12.19	15.45	51.72	19.68	0.96
517.00	5.12	55.36	516.36	-13.76	13.76	17.57	51.94	22.32	1.84
609.00	7.11	58.21	607.83	-19.09	19.09	25.79	53.49	32.09	2.19
702.00	10.69	62.53	699.69	-26.11	26.11	38.35	55.75	46.39	3.91
795.00	11.15	61.90	791.01	-34.32	34.32	53.93	57.53	63.93	0.50
888.00	10.47	61.55	882.36	-42.58	42.58	69.29	58.43	81.33	0.73
981.00	10.74	60.63	973.77	-50.86	50.86	84.27	58.89	98.43	0.34
1014.00	10.11	56.04	1006.23	-53.98	53.98	89.36	58.86	104.40	3.15
1178.00	10.29	53.74	1167.63	-70.70	70.70	113.12	58.00	133.39	0.27
1364.00	10.60	52.70	1350.55	-90.89	90.89	140.13	57.03	167.02	0.19
1552.00	10.51	50.32	1535.37	-112.32	112.32	167.08	56.09	201.32	0.24
1742.00	9.98	46.51	1722.34	-134.71	134.71	192.36	55.00	234.84	0.45
1933.00	9.56	53.03	1910.57	-155.65	155.65	217.04	54.35	267.08	0.62
2123.00	9.14	51.70	2098.05	-174.50	174.50	241.50	54.15	297.94	0.25
2314.00	8.04	57.81	2286.91	-191.02	191.02	264.72	54.19	326.44	0.75
2505.00	7.75	64.55	2476.10	-203.67	203.67	287.65	54.70	352.46	0.51
2695.00	8.20	54.15	2664.27	-217.12	217.12	310.20	55.01	378.64	0.79
2885.00	6.56	57.68	2852.69	-230.85	230.85	330.36	55.05	403.03	0.89

MD	Inc	Azim	TVD	VS	+N/-S	+E/-W	Closure Direction	Closure Distance	DLS
ft	deg	deg	ft	ft	ft	ft	deg	ft	°/100ft
3076.00	5.80	56.98	3042.58	-241.94	241.94	347.67	55.17	423.57	0.40
3266.00	2.32	34.31	3232.08	-250.35	250.35	357.89	55.03	436.76	1.98
3457.00	0.74	135.19	3423.03	-252.67	252.67	360.94	55.01	440.59	1.34
3647.00	1.05	121.31	3613.01	-250.89	250.89	363.29	55.37	441.51	0.20
3838.00	1.64	148.78	3803.96	-247.65	247.65	366.20	55.93	442.08	0.45
4028.00	1.72	147.42	3993.87	-242.92	242.92	369.15	56.65	441.90	0.05
4219.00	0.76	271.70	4184.85	-240.54	240.54	369.42	56.93	440.83	1.17
4409.00	0.91	291.59	4374.83	-241.13	241.13	366.75	56.68	438.92	0.17
4600.00	1.51	296.79	4565.78	-242.83	242.83	363.08	56.23	436.80	0.32
4790.00	1.95	279.69	4755.70	-244.50	244.50	357.66	55.64	433.25	0.35
4981.00	1.99	290.55	4946.58	-246.21	246.21	351.35	54.98	429.03	0.20
5171.00	2.48	349.29	5136.46	-251.40	251.40	347.50	54.12	428.91	1.17
5362.00	1.04	73.48	5327.39	-255.95	255.95	348.39	53.70	432.30	1.35
5552.00	1.90	47.91	5517.33	-258.55	258.55	352.38	53.73	437.05	0.56
5743.00	1.50	60.60	5708.24	-261.90	261.90	356.91	53.73	442.70	0.29
5933.00	1.16	84.40	5898.19	-263.32	263.32	361.01	53.89	446.84	0.34
6123.00	1.44	161.05	6088.16	-261.24	261.24	363.71	54.31	447.81	0.86
6276.00	1.45	156.44	6241.11	-257.64	257.64	365.11	54.79	446.86	0.08

MD	Inc	Azim	TVD	VS	+N/-S	+E/-W	Closure Direction	Closure Distance	DLS
ft	deg	deg	ft	ft	ft	ft	deg	ft	°/100ft
6315.00	1.16	134.89	6280.10	-256.91	256.91	365.58	54.90	446.83	1.45
6410.00	7.67	169.06	6374.77	-250.01	250.01	367.47	55.77	444.45	7.10
6505.00	13.50	179.64	6468.12	-232.68	232.68	368.74	57.75	436.02	6.44
6600.00	17.51	180.31	6559.65	-207.29	207.29	368.74	60.66	423.01	4.23
6695.00	23.29	184.99	6648.66	-174.26	174.26	367.03	64.60	406.29	6.32
6791.00	32.08	187.15	6733.58	-129.97	129.97	362.19	70.26	384.81	9.21
6886.00	44.31	184.26	6808.11	-71.62	71.62	356.57	78.64	363.69	13.01
6982.00	52.82	180.75	6871.60	0.20	-0.20	353.57	90.03	353.57	9.27
7077.00	63.23	180.24	6921.84	80.67	-80.67	352.89	102.88	362.00	10.98
7172.00	70.61	180.11	6959.05	168.01	-168.01	352.63	115.48	390.60	7.77
7267.00	77.09	179.90	6985.46	259.21	-259.21	352.62	126.32	437.64	6.82
7363.00	80.58	178.20	7004.04	353.36	-353.36	354.18	134.93	500.31	4.03
7441.00	85.80	178.90	7013.29	430.76	-430.76	356.14	140.42	558.92	6.75
7534.00	86.58	178.41	7019.47	523.53	-523.53	358.32	145.61	634.41	0.98
7627.00	88.15	179.18	7023.74	616.41	-616.41	360.27	149.70	713.97	1.88
7720.00	90.64	178.90	7024.72	709.38	-709.38	361.84	152.98	796.33	2.69
7813.00	90.40	180.05	7023.88	802.37	-802.37	362.69	155.68	880.54	1.26
7908.00	90.20	179.35	7023.37	897.37	-897.37	363.20	157.96	968.08	0.77

MD	Inc	Azim	TVD	VS	+N/-S	+E/-W	Closure Direction	Closure Distance	DLS
ft	deg	deg	ft	ft	ft	ft	deg	ft	°/100ft
8003.00	91.24	178.25	7022.18	992.34	-992.34	365.20	159.80	1057.40	1.59
8099.00	91.98	179.60	7019.48	1088.28	-1088.28	367.00	161.36	1148.49	1.60
8194.00	91.01	179.75	7017.00	1183.24	-1183.24	367.54	162.74	1239.01	1.04
8289.00	91.01	180.66	7015.33	1278.23	-1278.23	367.20	163.97	1329.93	0.95
8384.00	91.48	180.16	7013.27	1373.20	-1373.20	366.53	165.06	1421.28	0.72
8479.00	90.60	180.87	7011.54	1468.18	-1468.18	365.68	166.01	1513.04	1.19
8575.00	88.79	181.78	7012.05	1564.15	-1564.15	363.46	166.92	1605.82	2.12
8670.00	87.14	180.85	7015.42	1659.06	-1659.06	361.28	167.72	1697.94	1.99
8766.00	87.64	180.73	7019.79	1754.95	-1754.95	359.96	168.41	1791.49	0.54
8861.00	88.89	180.61	7022.66	1849.90	-1849.90	358.84	169.02	1884.38	1.32
8956.00	91.11	180.03	7022.65	1944.89	-1944.89	358.31	169.56	1977.62	2.41
9051.00	90.64	178.73	7021.20	2039.87	-2039.87	359.34	170.01	2071.28	1.46
9146.00	91.75	179.01	7019.23	2134.83	-2134.83	361.20	170.40	2165.17	1.20
9241.00	91.41	178.26	7016.61	2229.77	-2229.77	363.46	170.74	2259.20	0.87
9337.00	91.04	177.90	7014.55	2325.69	-2325.69	366.67	171.04	2354.42	0.54
9432.00	90.10	176.66	7013.61	2420.58	-2420.58	371.18	171.28	2448.87	1.65
9527.00	89.53	178.67	7013.91	2515.49	-2515.49	375.05	171.52	2543.30	2.20
9622.00	88.76	178.58	7015.33	2610.45	-2610.45	377.33	171.78	2637.58	0.82

MD	Inc	Azim	TVD	VS	+N/-S	+E/-W	Closure Direction	Closure Distance	DLS
ft	deg	deg	ft	ft	ft	ft	deg	ft	°/100ft
9718.00	90.94	177.40	7015.58	2706.39	-2706.39	380.70	171.99	2733.03	2.59
9813.00	90.37	180.51	7014.50	2801.35	-2801.35	382.43	172.23	2827.34	3.33
9908.00	89.66	184.11	7014.47	2896.26	-2896.26	378.60	172.55	2920.90	3.85
10003.00	89.09	181.40	7015.50	2991.14	-2991.14	374.03	172.87	3014.43	2.91
10098.00	89.46	180.83	7016.69	3086.11	-3086.11	372.18	173.12	3108.47	0.71
10194.00	90.87	181.14	7016.41	3182.09	-3182.09	370.52	173.36	3203.59	1.50
10289.00	91.34	181.75	7014.58	3277.04	-3277.04	368.13	173.59	3297.65	0.81
10384.00	89.33	181.64	7014.02	3371.99	-3371.99	365.32	173.82	3391.73	2.12
10480.00	89.80	181.48	7014.75	3467.96	-3467.96	362.70	174.03	3486.87	0.51
10575.00	88.59	181.33	7016.09	3562.92	-3562.92	360.37	174.22	3581.09	1.28
10670.00	89.33	180.90	7017.81	3657.88	-3657.88	358.53	174.40	3675.41	0.90
10765.00	89.97	180.08	7018.40	3752.88	-3752.88	357.71	174.56	3769.88	1.09
10860.00	89.63	181.11	7018.73	3847.87	-3847.87	356.73	174.70	3864.37	1.13
10956.00	88.56	180.94	7020.25	3943.84	-3943.84	355.02	174.86	3959.79	1.13
11051.00	88.76	180.23	7022.48	4038.81	-4038.81	354.05	174.99	4054.30	0.77
11146.00	87.15	180.20	7025.87	4133.74	-4133.74	353.69	175.11	4148.85	1.70
11242.00	87.08	179.81	7030.71	4229.62	-4229.62	353.68	175.22	4244.38	0.41
11337.00	87.21	179.06	7035.44	4324.50	-4324.50	354.61	175.31	4339.01	0.80

MD	Inc	Azim	TVD	VS	+N/-S	+E/-W	Closure Direction	Closure Distance	DLS
ft	deg	deg	ft	ft	ft	ft	deg	ft	°/100ft
11432.00	87.21	179.02	7040.06	4419.37	-4419.37	356.20	175.39	4433.70	0.05
11455.00	87.32	178.66	7041.16	4442.34	-4442.34	356.67	175.41	4456.64	1.64

MD	Inc	Azim	TVD	VS	+N/-S	+E/-W	Closure Direction	Closure Distance	DLS
ft	deg	deg	ft	ft	ft	ft	deg	ft	°/100ft

5" = 100' FEET MD