



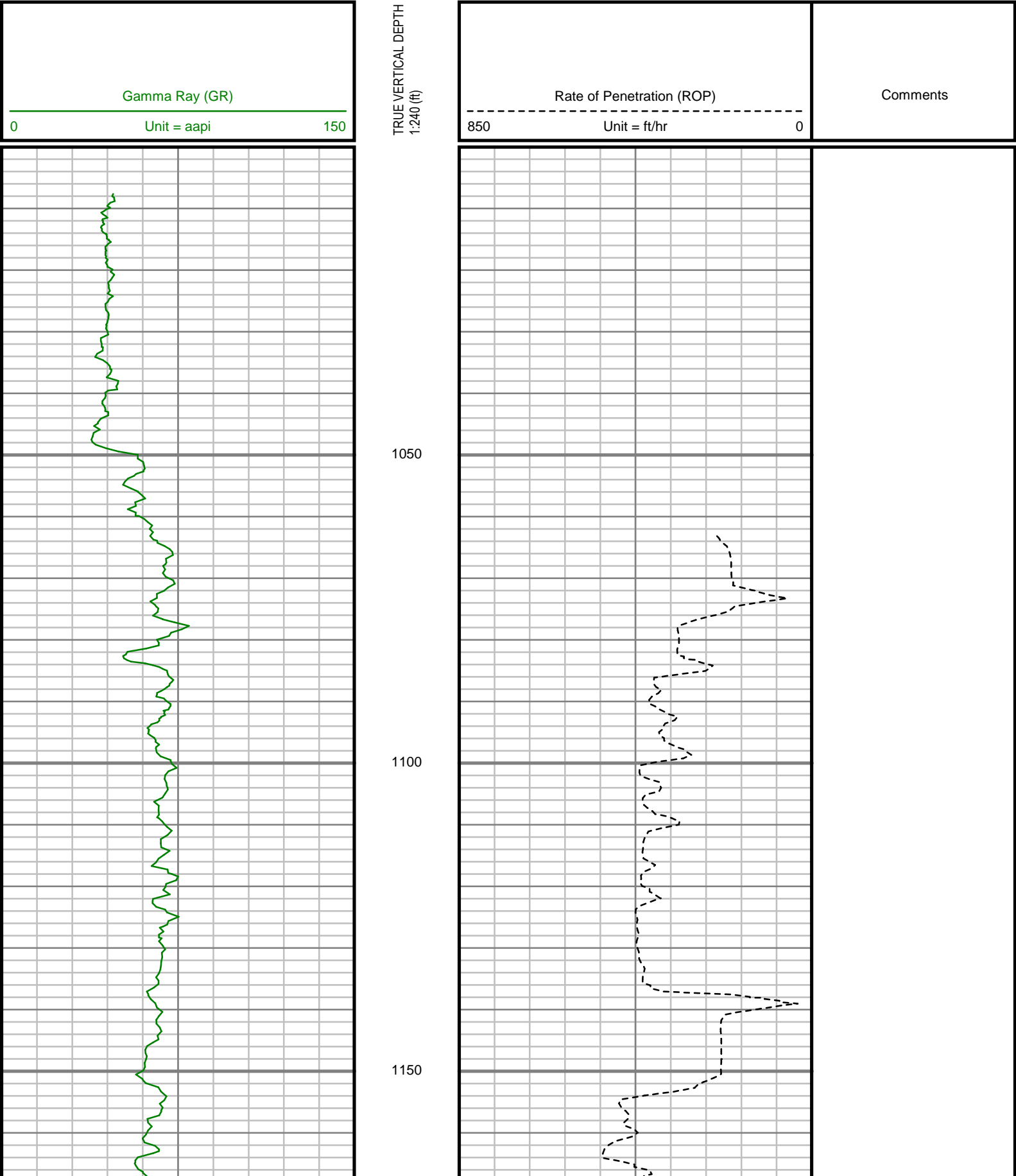
GAMMA RAY

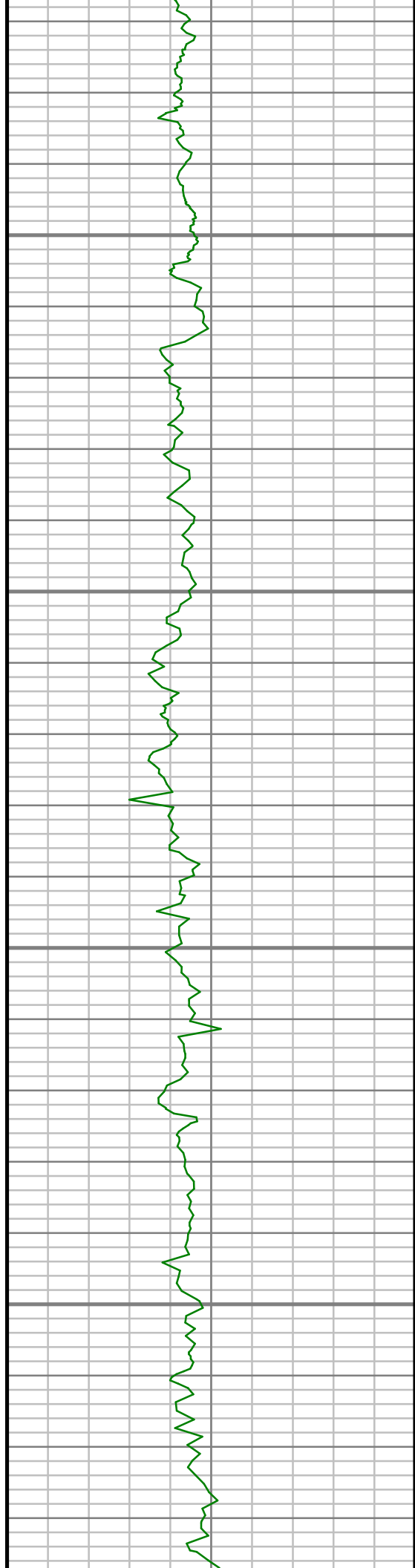
5" = 100' FEET TVD

COMPANY : ENCANANA OIL & GAS (USA) INC					
WELL : NEWNAM 2H-32H-C264					
FIELD : WATTENBERG					
COUNTY : WELD					
STATE : COLORADO					
COUNTRY : U.S.A.					
UWI : 05-123-39772					
COMPANY : ENCANANA OIL & GAS (USA) INC WELL : NEWNAM 2H-32H-C264 FIELD : WATTENBERG COUNTY : WELD STATE : COLORADO COUNTRY : U.S.A. UWI : 05-123-39772					
DEPTH REF. : RKB REF. HEIGHT : 13.000 ft GROUND LEVEL : 4954.000 ft				RKB to Ground Level G.L. to MEAN SEA LEVEL	
BOREHOLE RECORD				DEVIATION RECORD	
HOLE SIZE in	FROM ft	TO ft	INCLINATION deg	FROM ft	TO ft
12.25	132	1070	0 - 11	132	1070
8.75	1070	7431	11 - 88	1070	7431
6.125	7431	11332	88 - 92	7431	11332
CASING RECORD					
CASING SIZE in	FROM ft	TO ft			
9.625	0	1060			
7	0	7421			
			DRILLING CO.: ENSIGN RLG: 124 LMD UNIT NO.: C70-EW4#8DISTRICT: CASPER SPUD DATE: 12/29/2014 LMD START DATE: 12/31/2014 LMD END DATE: 01/07/2015		
			DEPTH : 5000 ft DEPTH : 11332 ft TOTAL DEPTH : 11332 ft		

All interpretations are opinions based on inferences from electrical or other measurements and we cannot, and do not guarantee the accuracy or correctness of any interpretations, and we shall not, except in the case of gross or willful negligence on our part, be liable or responsible for any loss, costs, damages or expenses incurred or sustained by anyone resulting from any interpretation made by any of our officers, agents or employees. These interpretations are also subject to our general terms and conditions as set out in our current price schedule.

ENCANA OIL & GAS (USA) INC
NEWNAM 2H-32H-C264
WATTENBURG FIELD
WELD COUNTY, COLORADO
05-123-39772



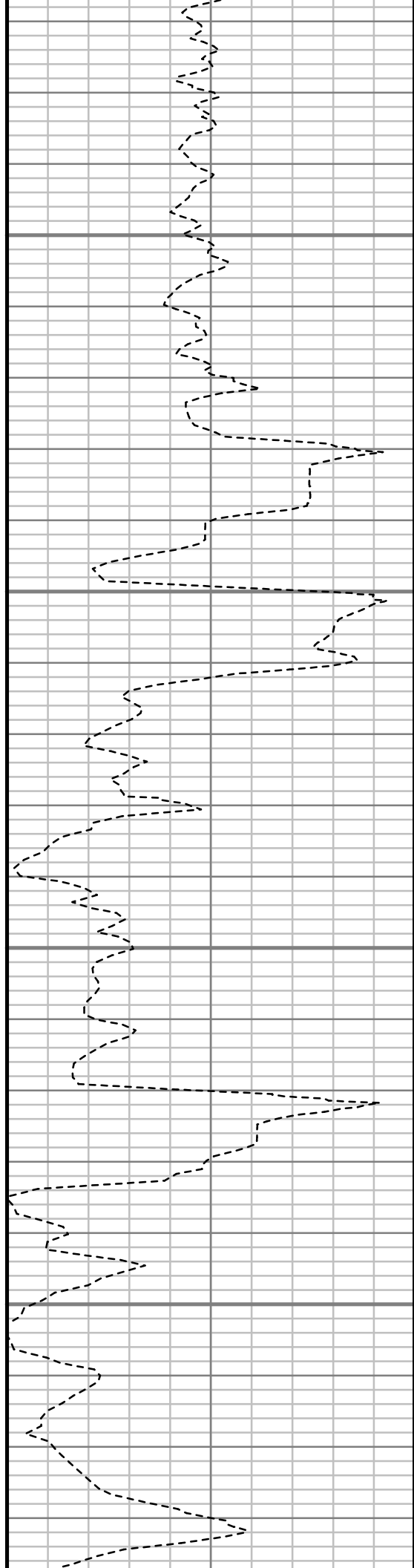


1200

1250

1300

1350





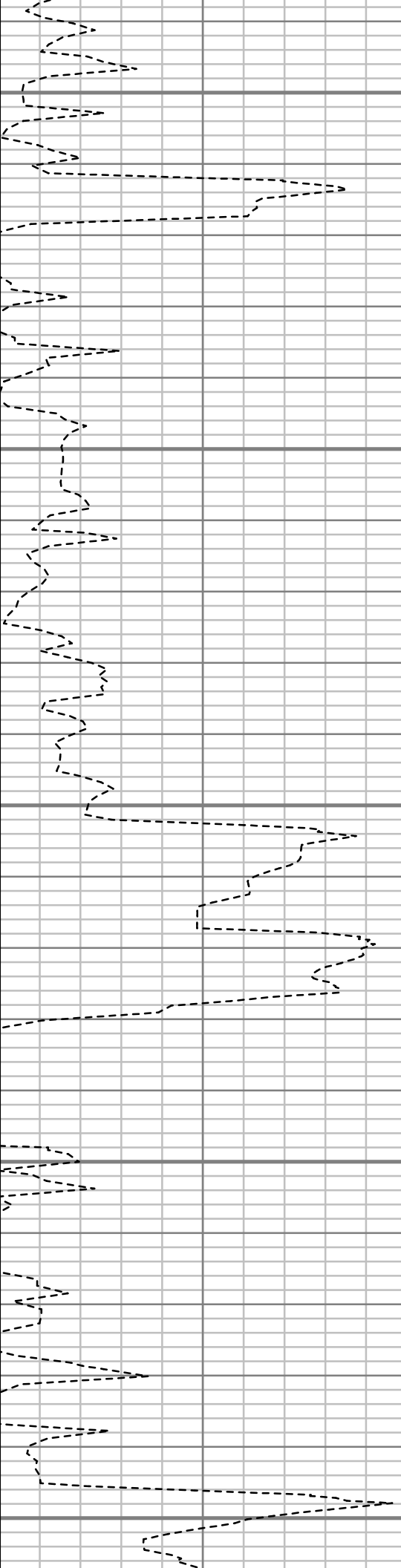
1400

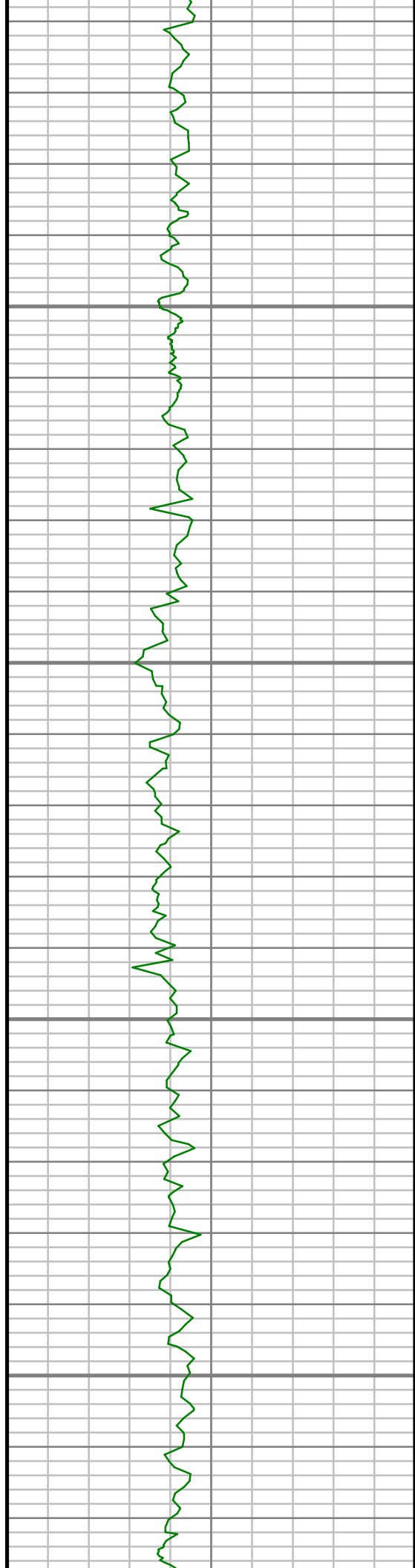
1450

1500

1550

1600



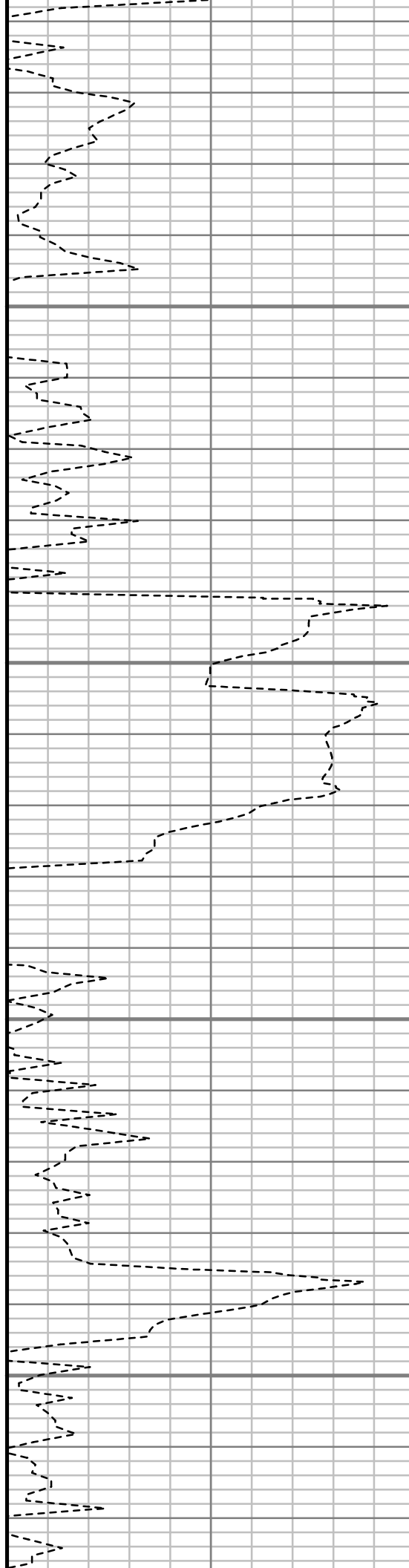


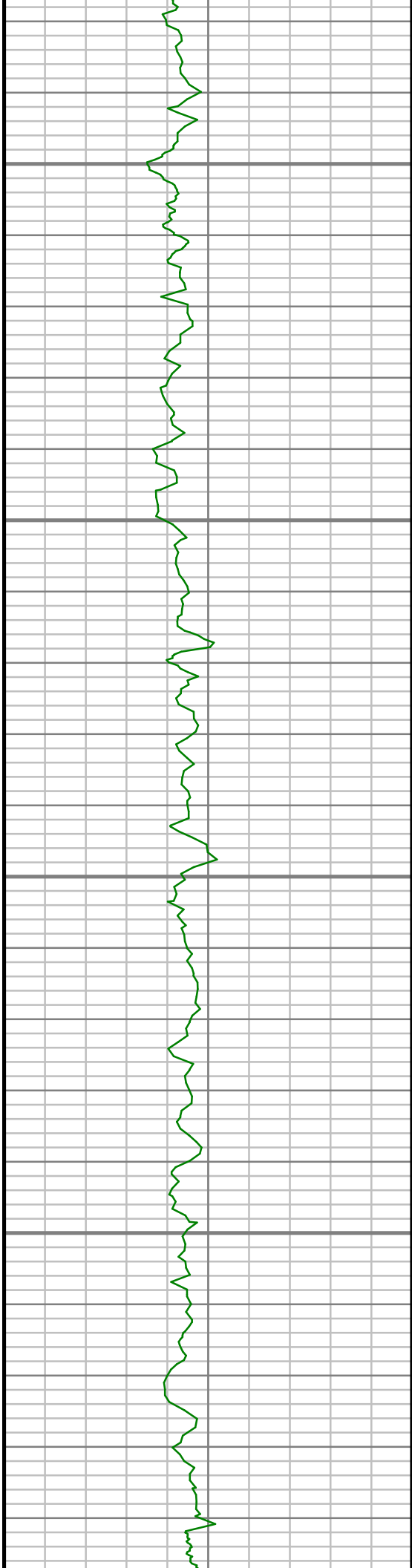
1650

1700

1750

1800



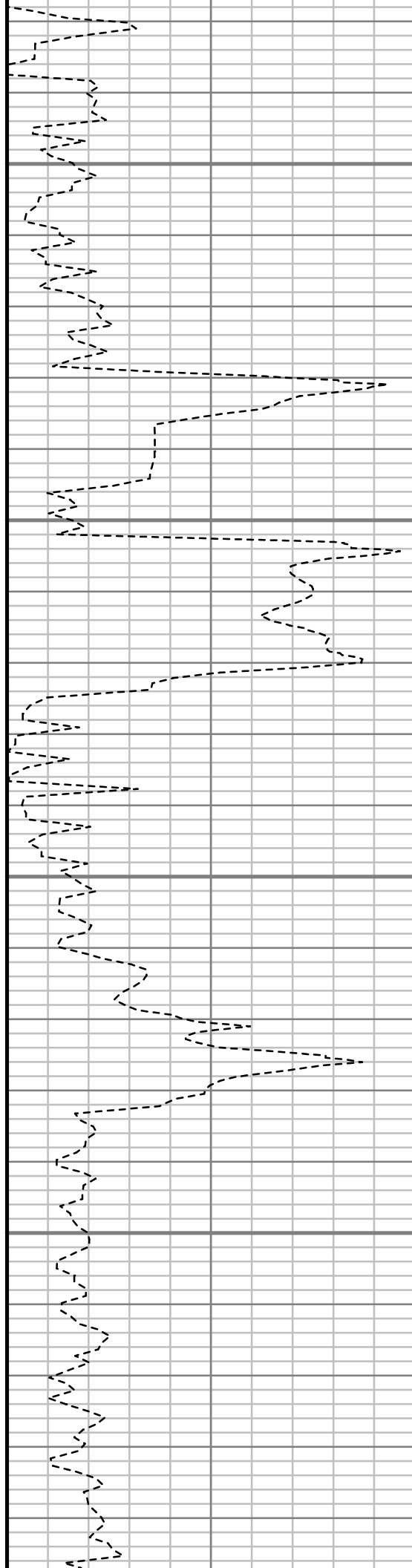


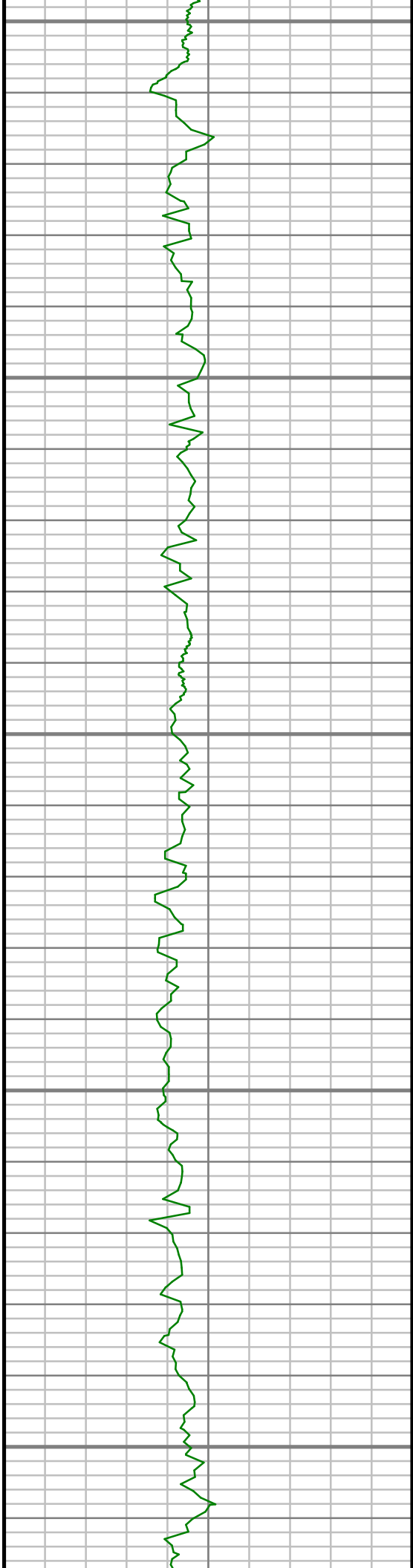
1850

1900

1950

2000





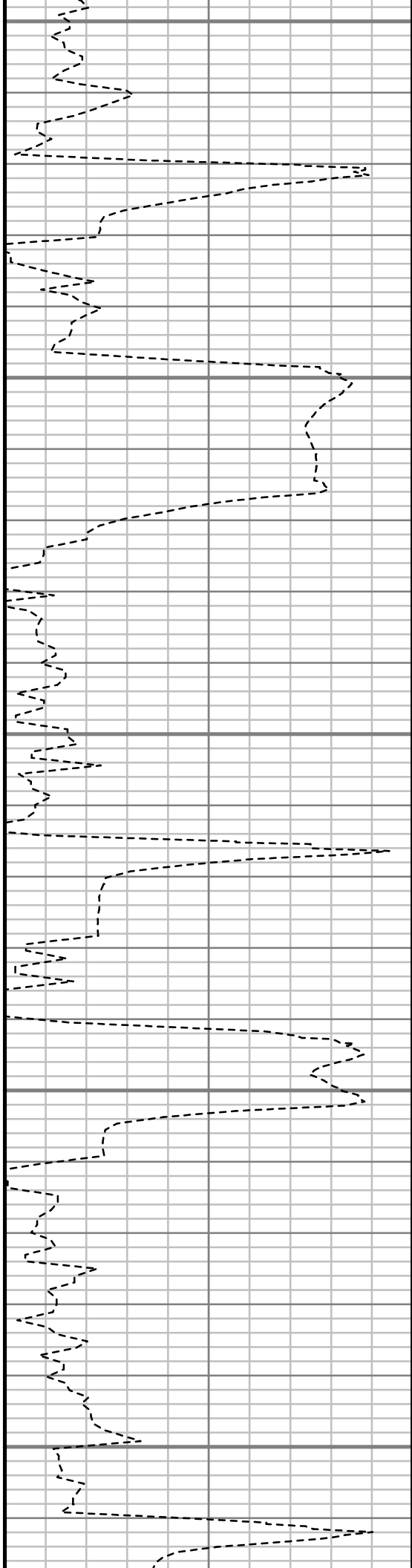
2050

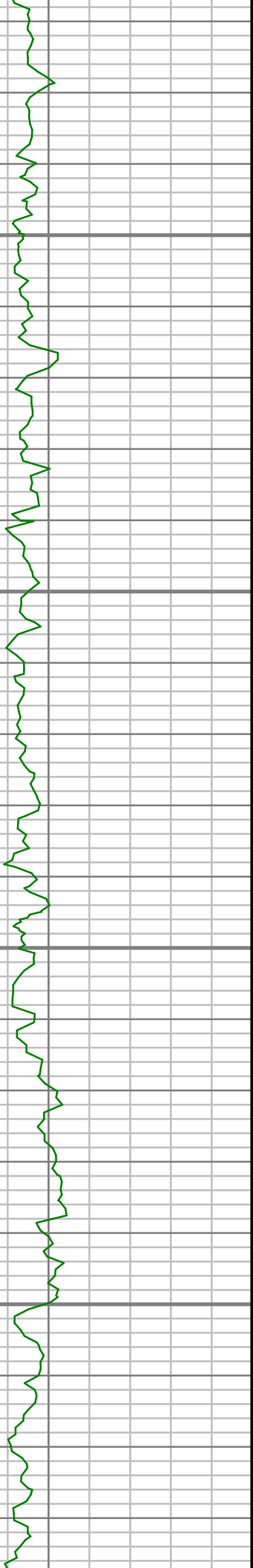
2100

2150

2200

2250



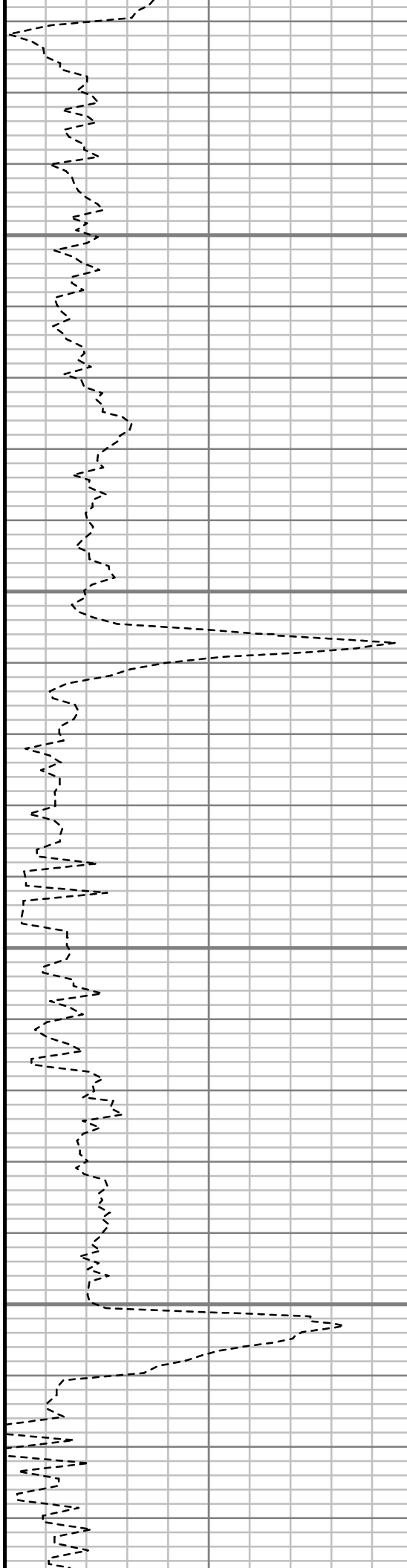


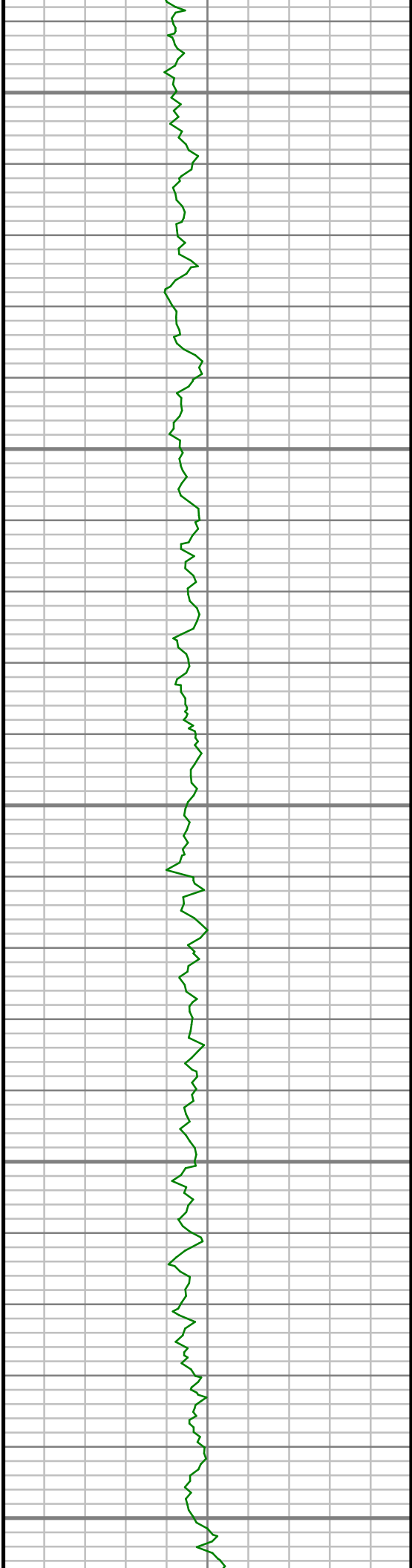
2300

2350

2400

2450





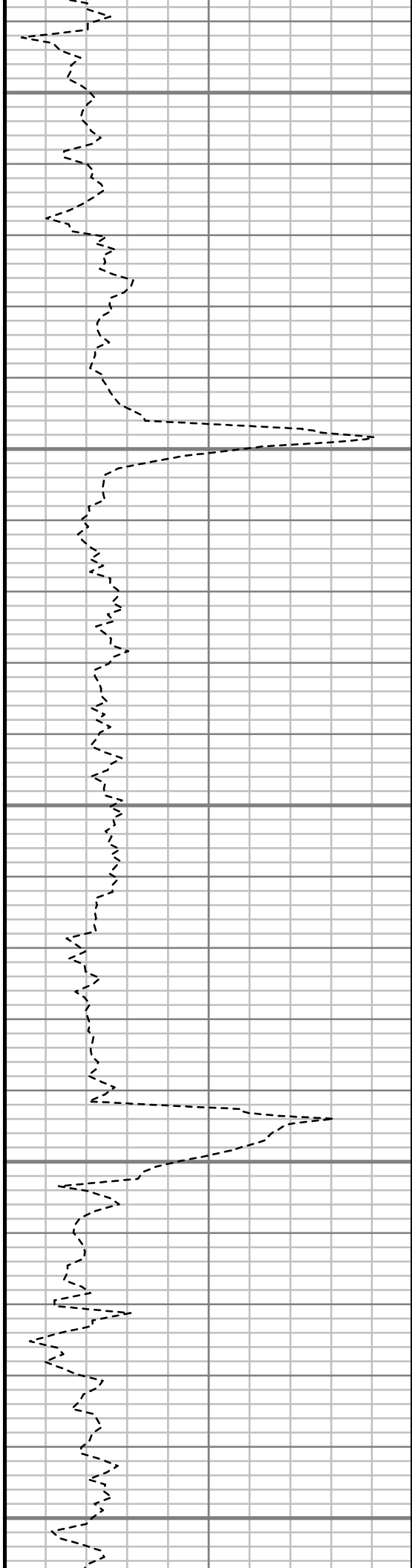
2500

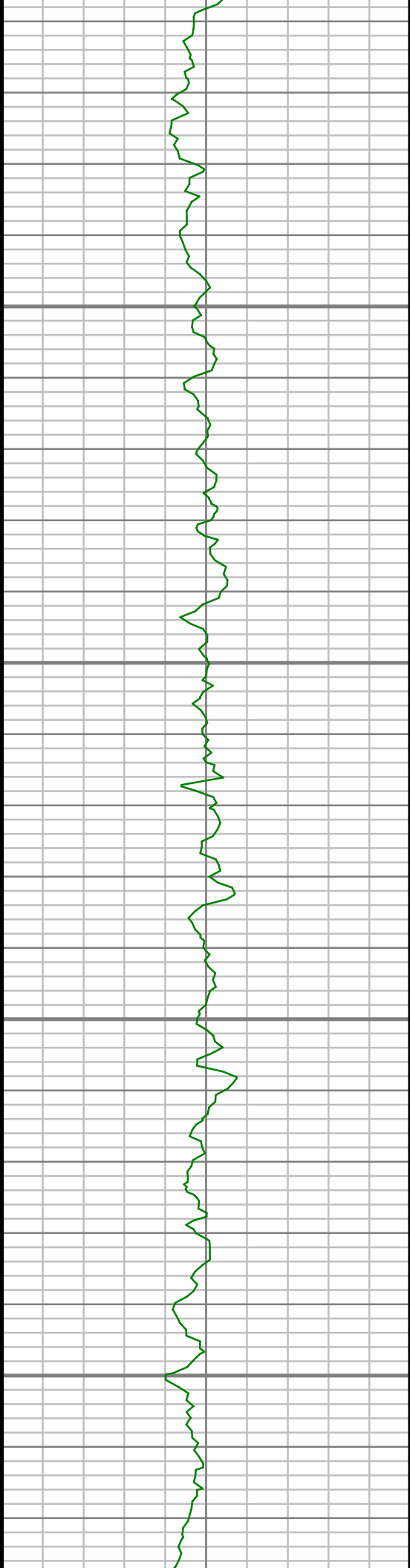
2550

2600

2650

2700



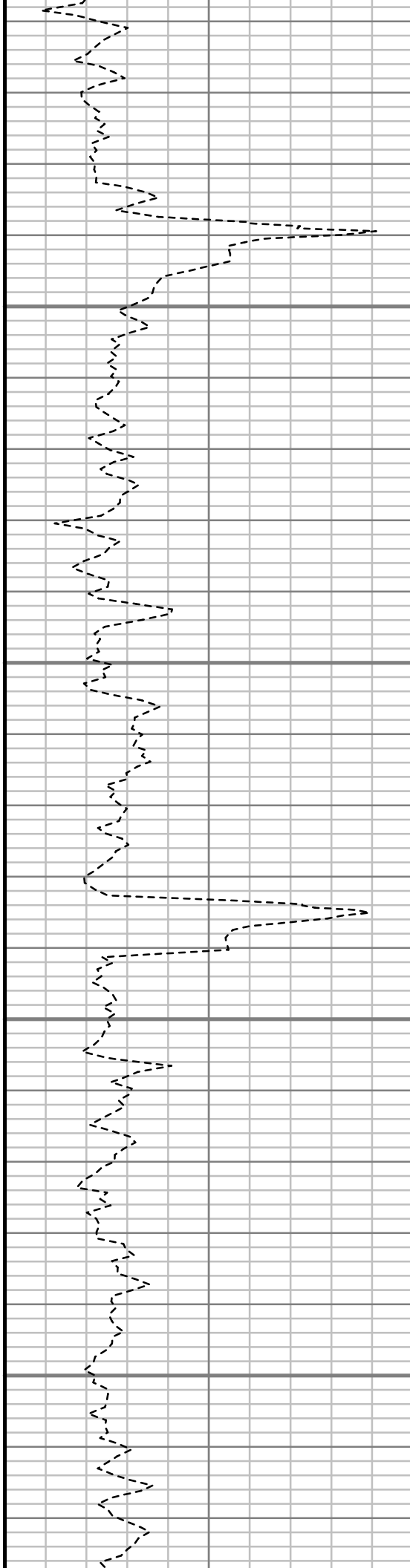


2750

2800

2850

2900



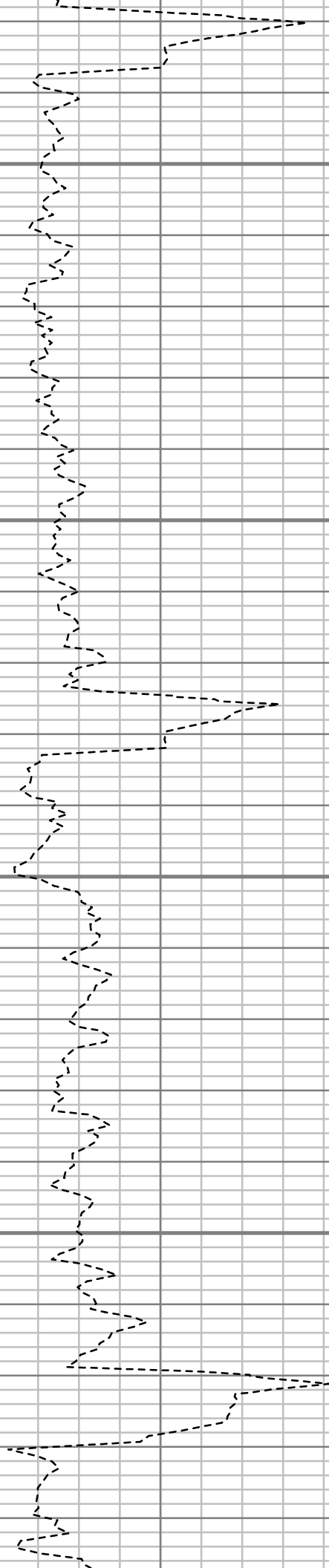


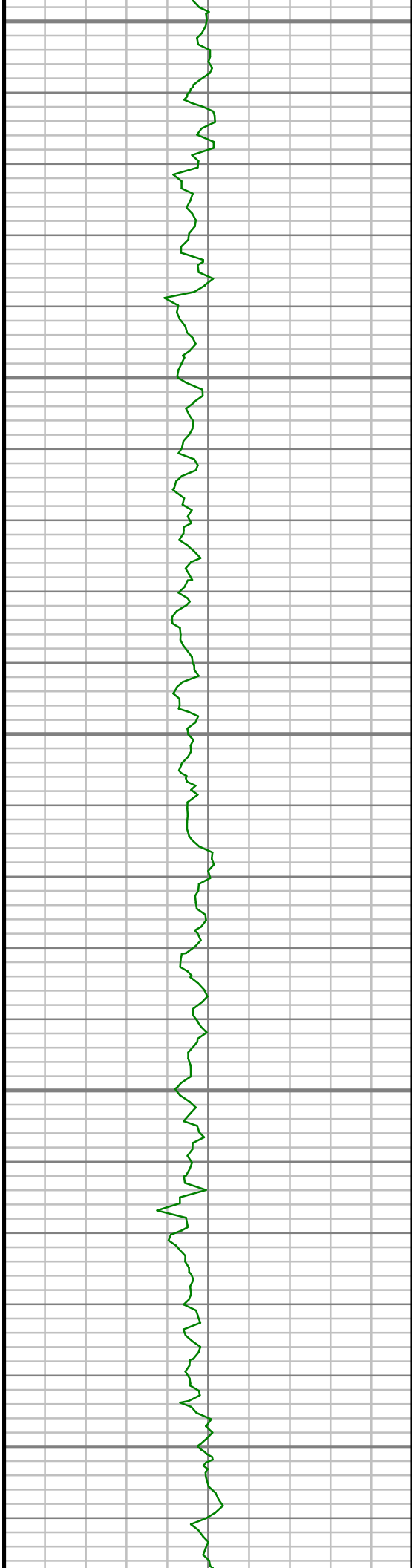
2950

3000

3050

3100





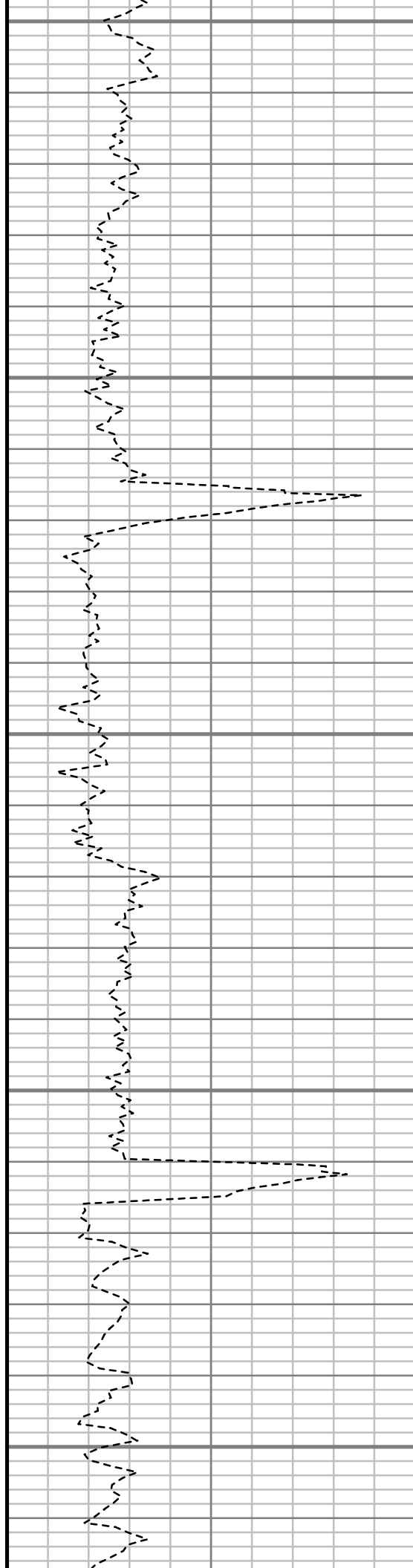
3150

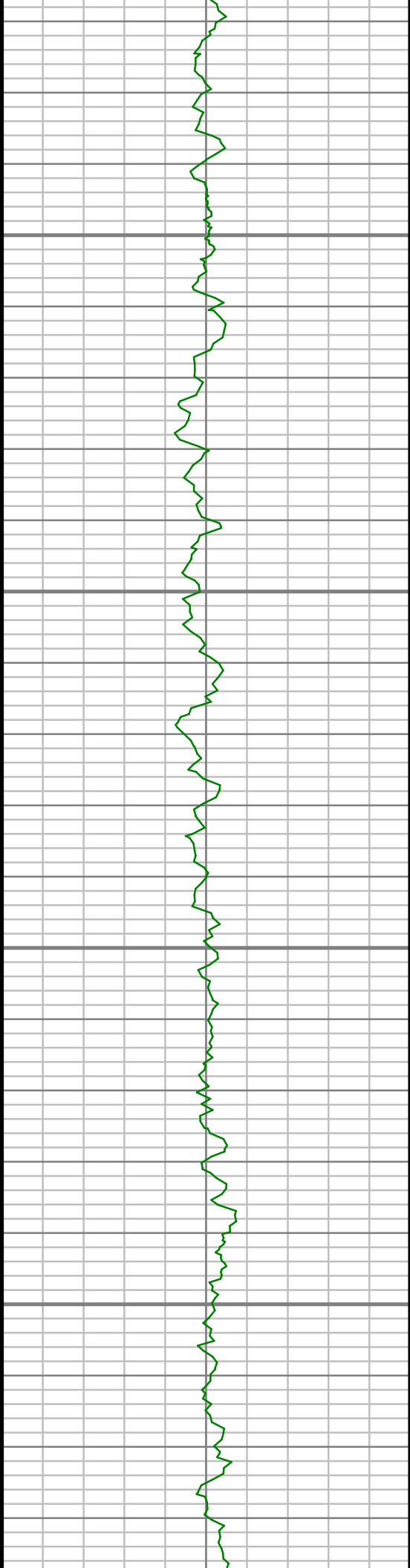
3200

3250

3300

3350



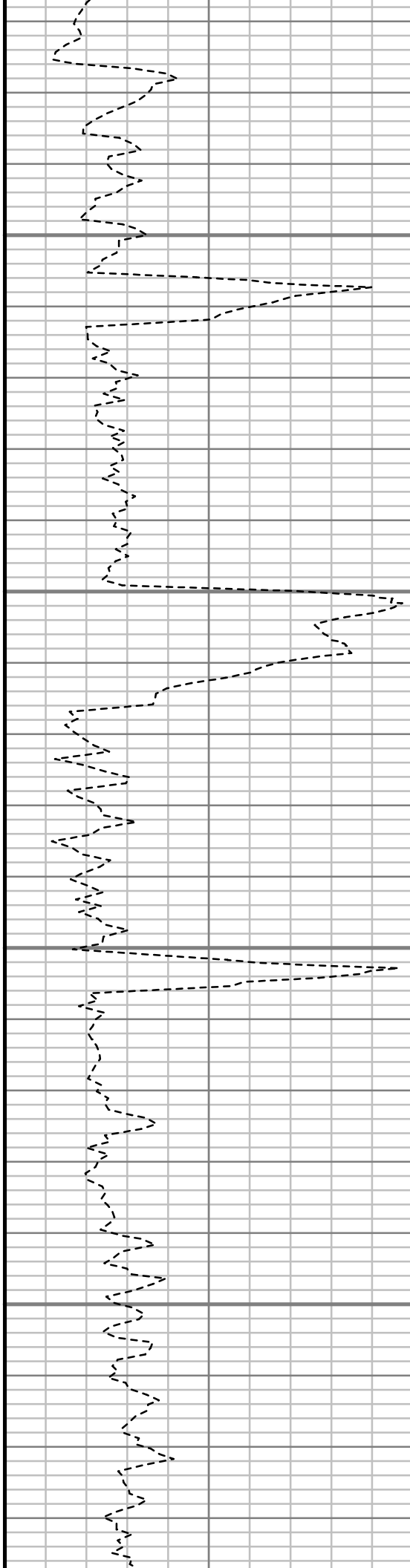


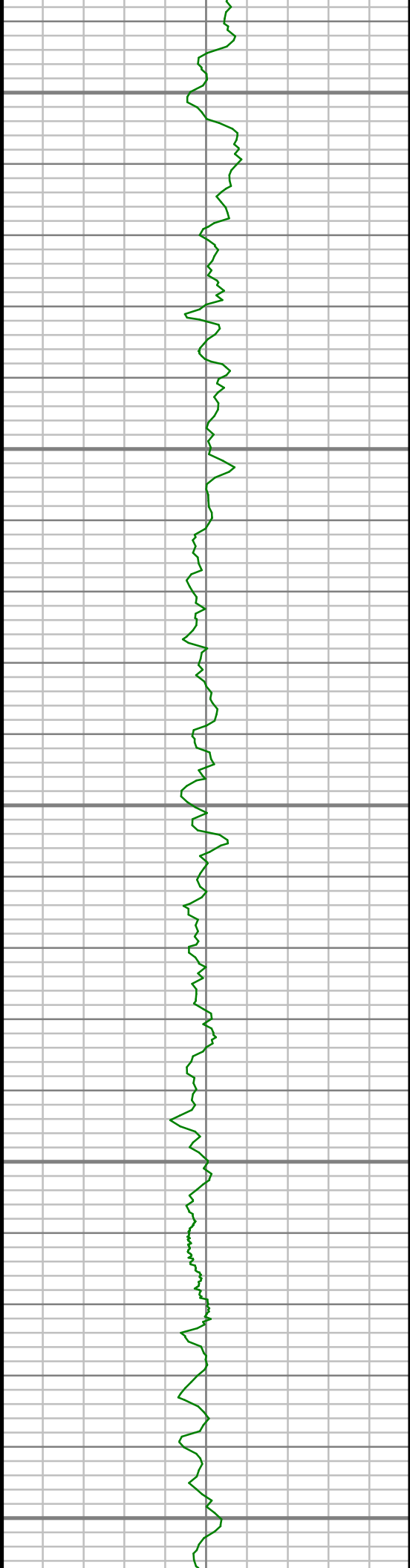
3400

3450

3500

3550





3600

3650

3700

3750

3800



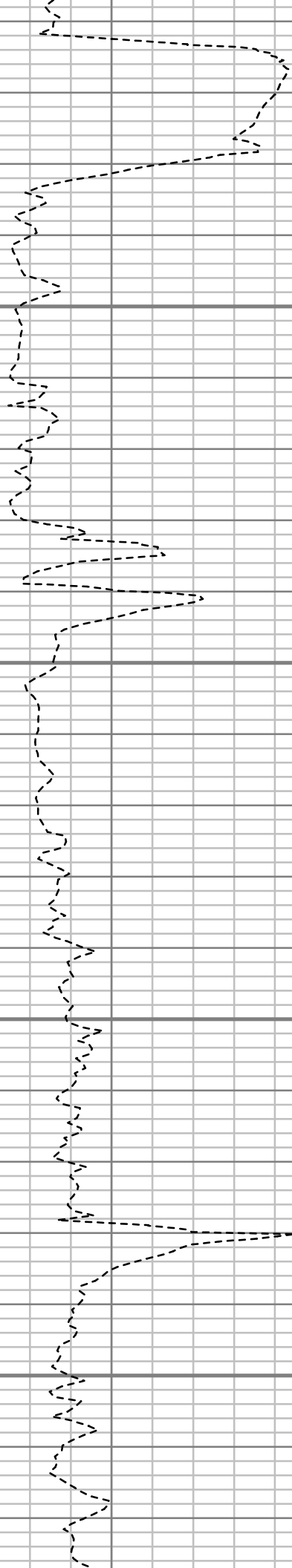


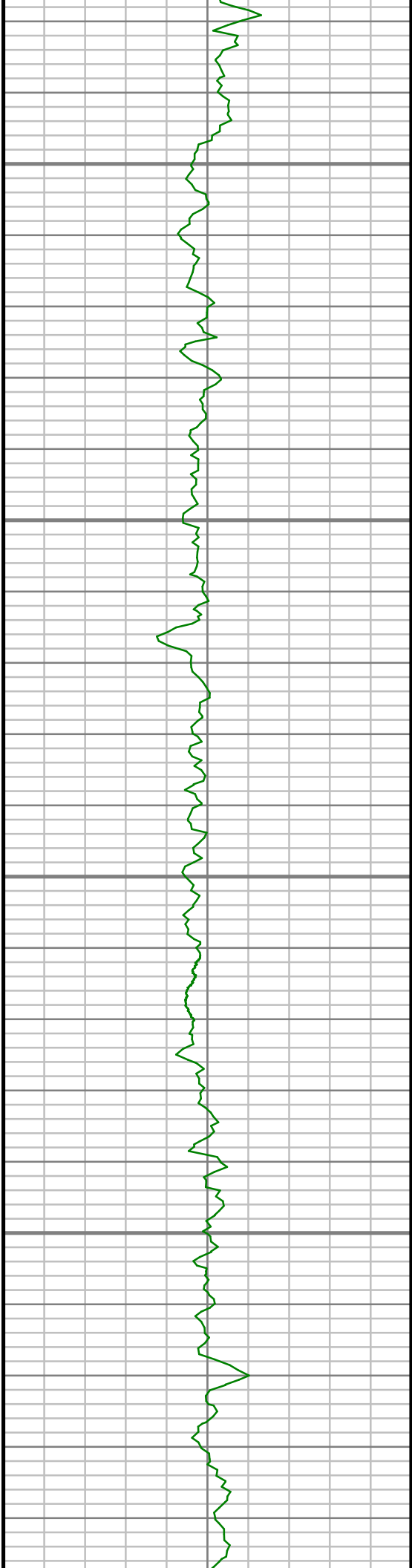
3850

3900

3950

4000



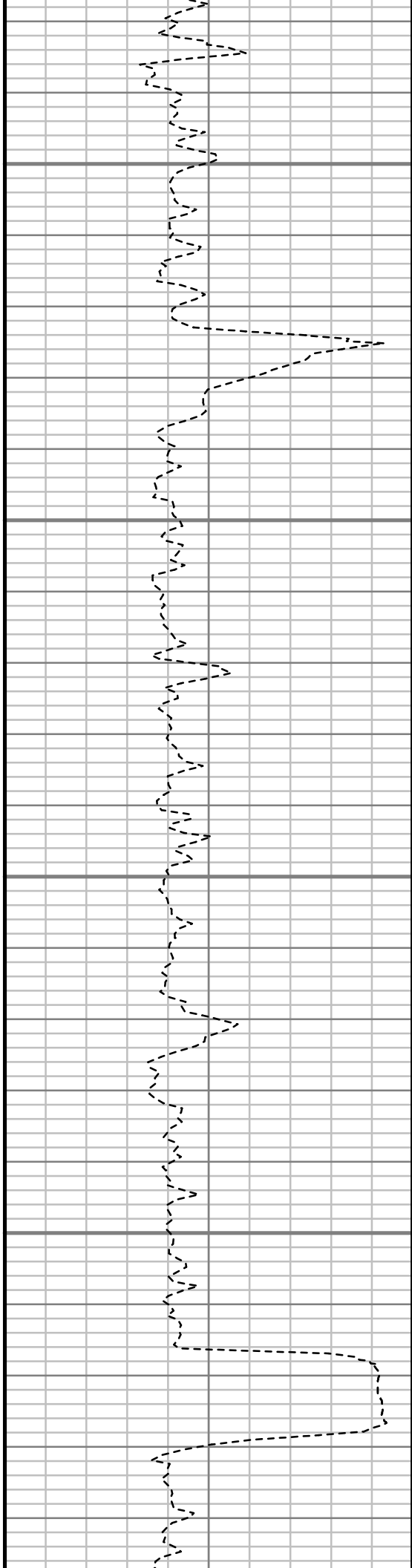


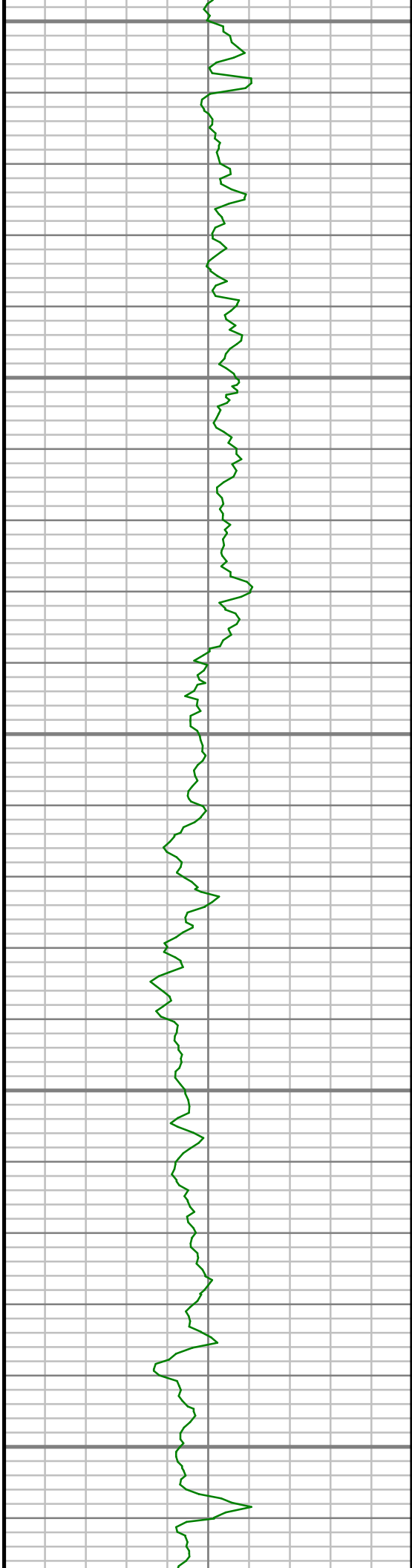
4050

4100

4150

4200





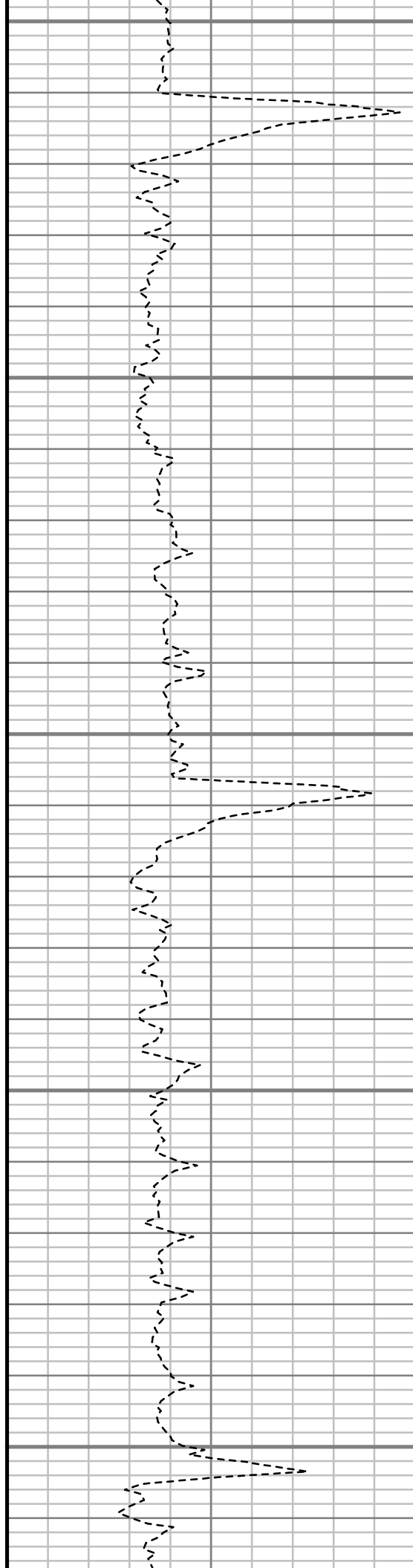
4250

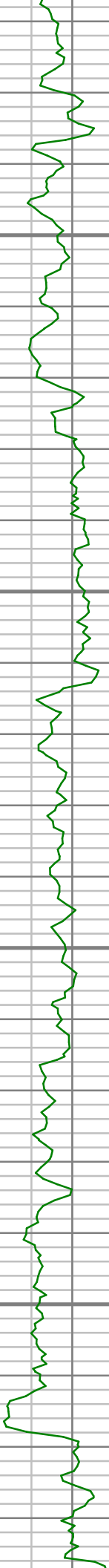
4300

4350

4400

4450



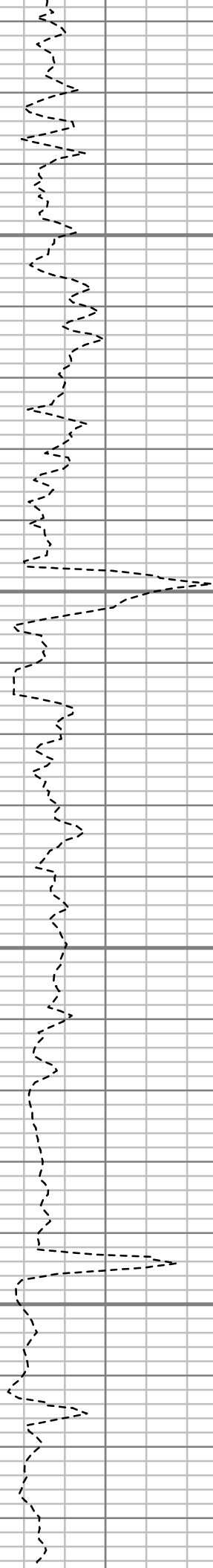


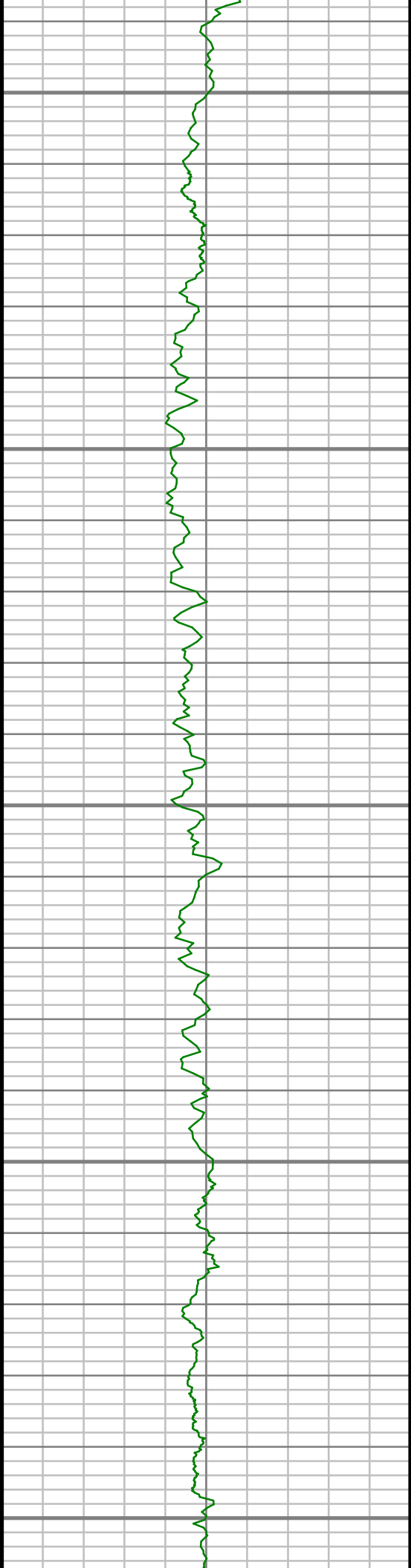
4500

4550

4600

4650





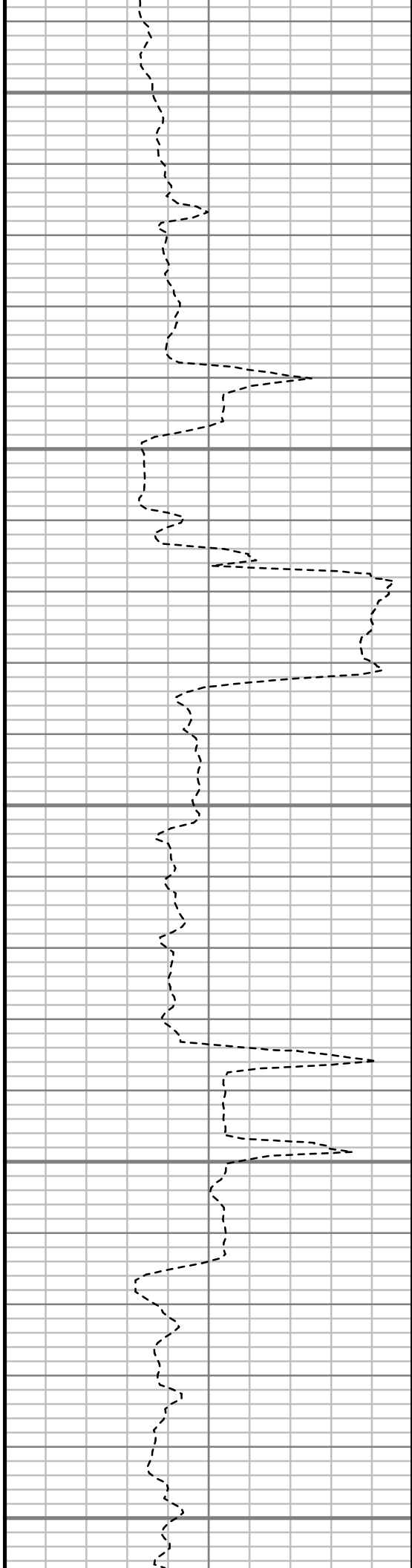
4700

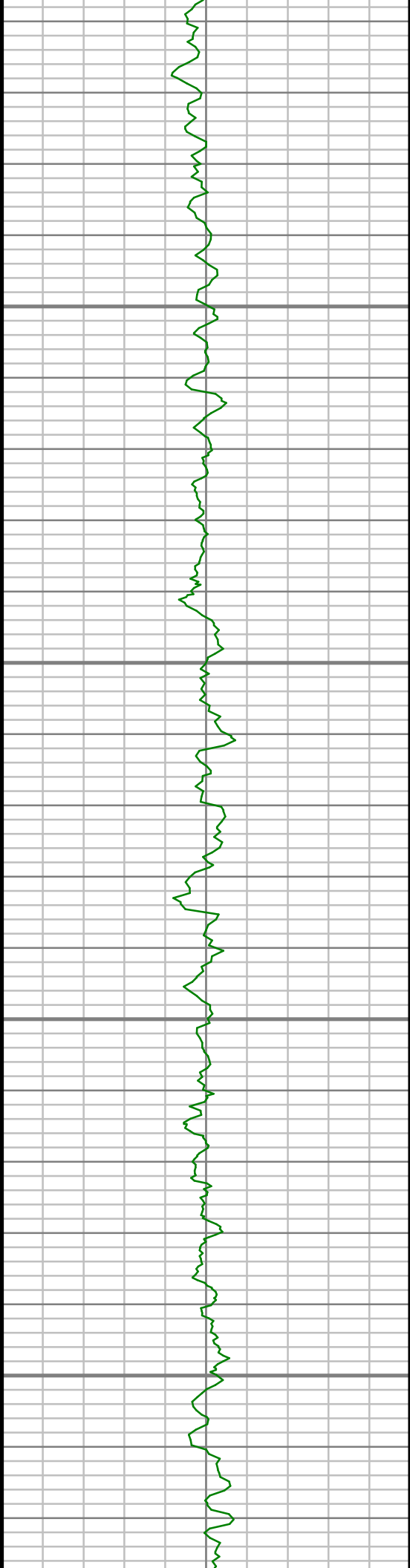
4750

4800

4850

4900



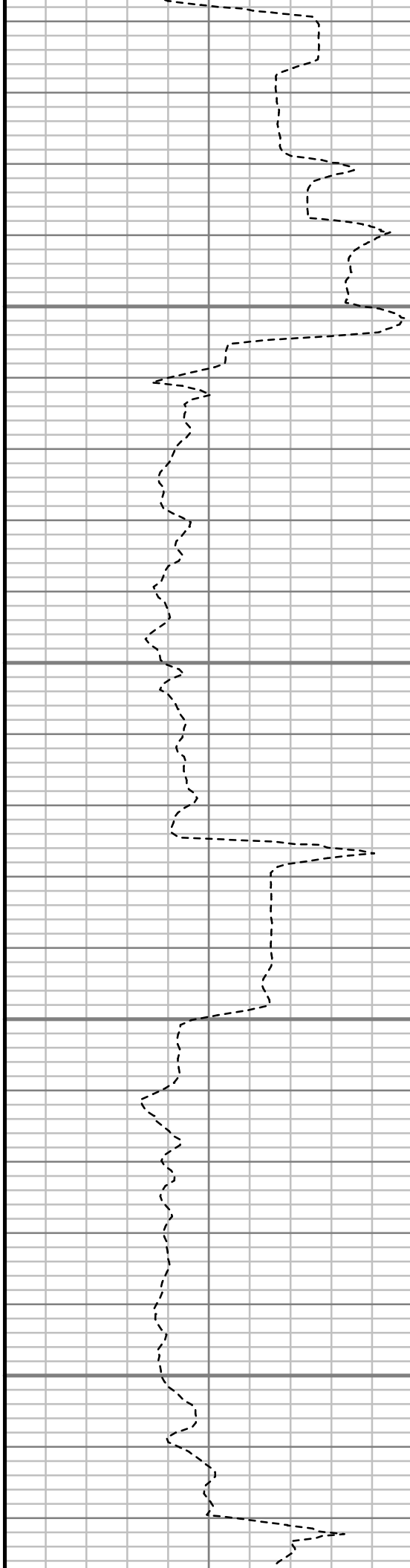


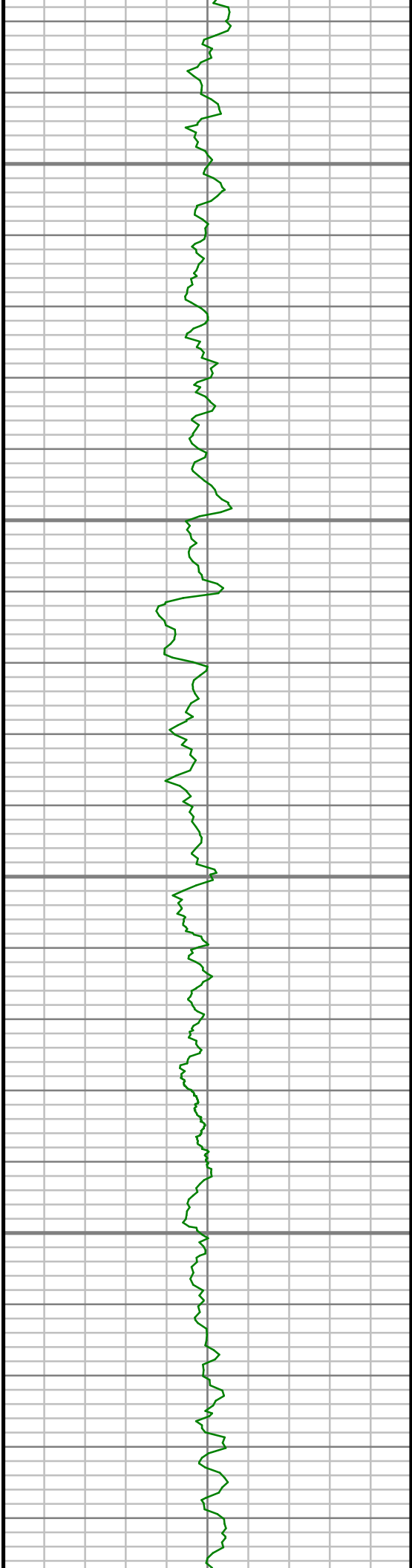
4950

5000

5050

5100



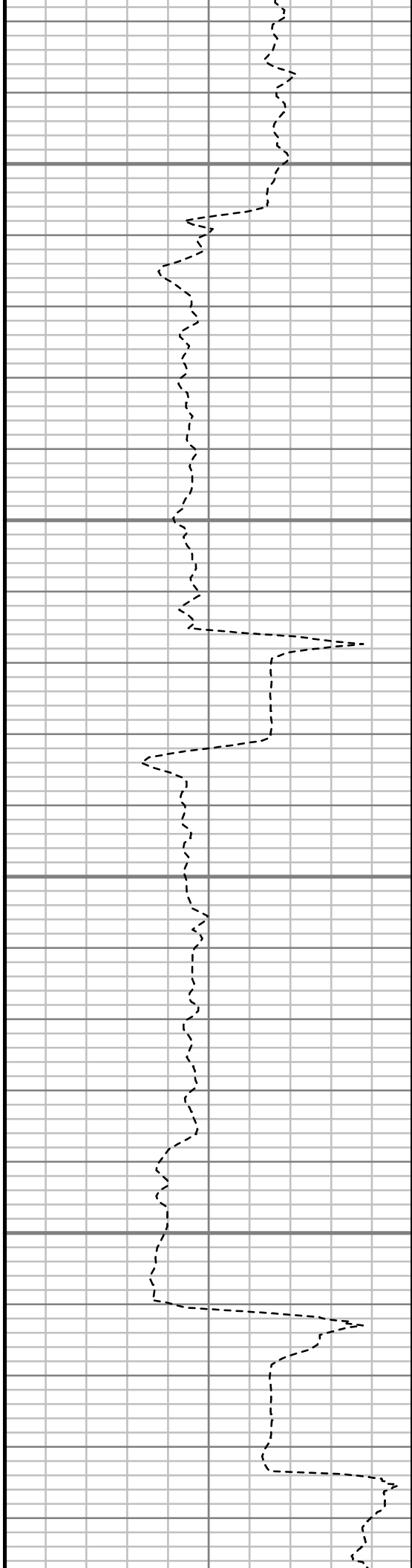


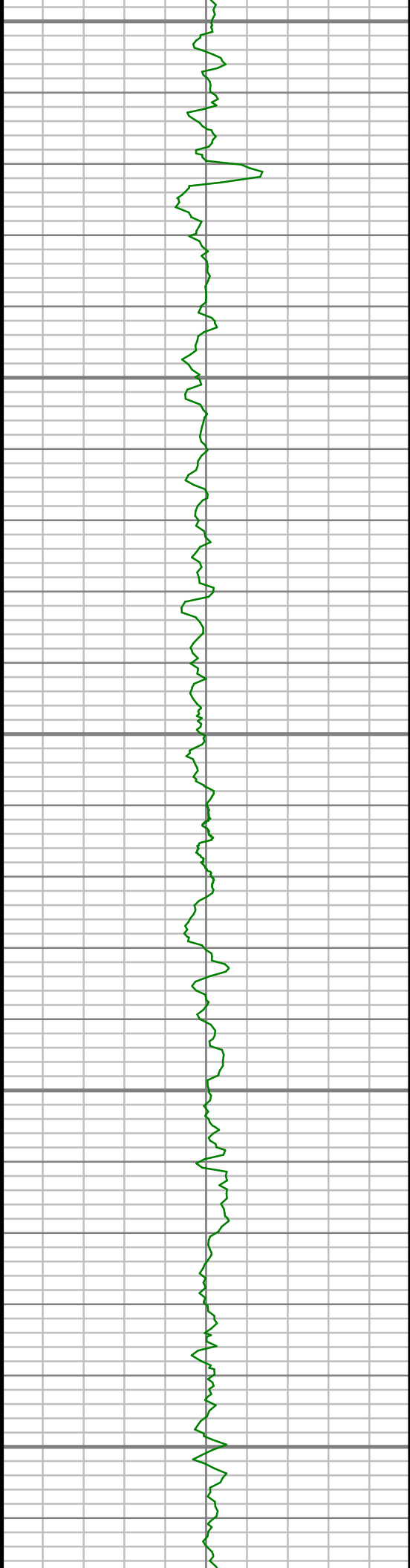
5150

5200

5250

5300





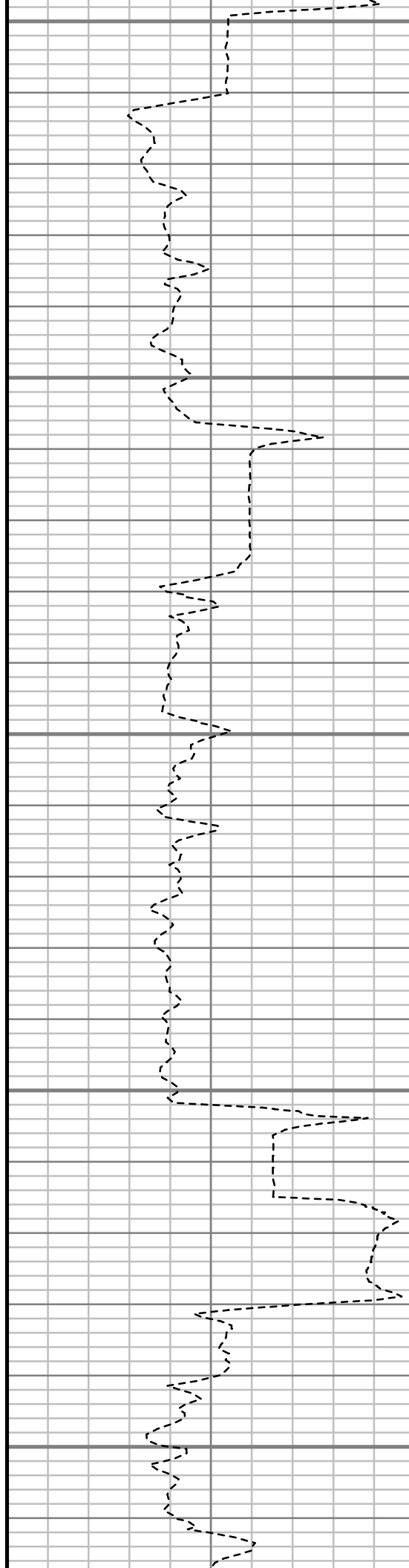
5350

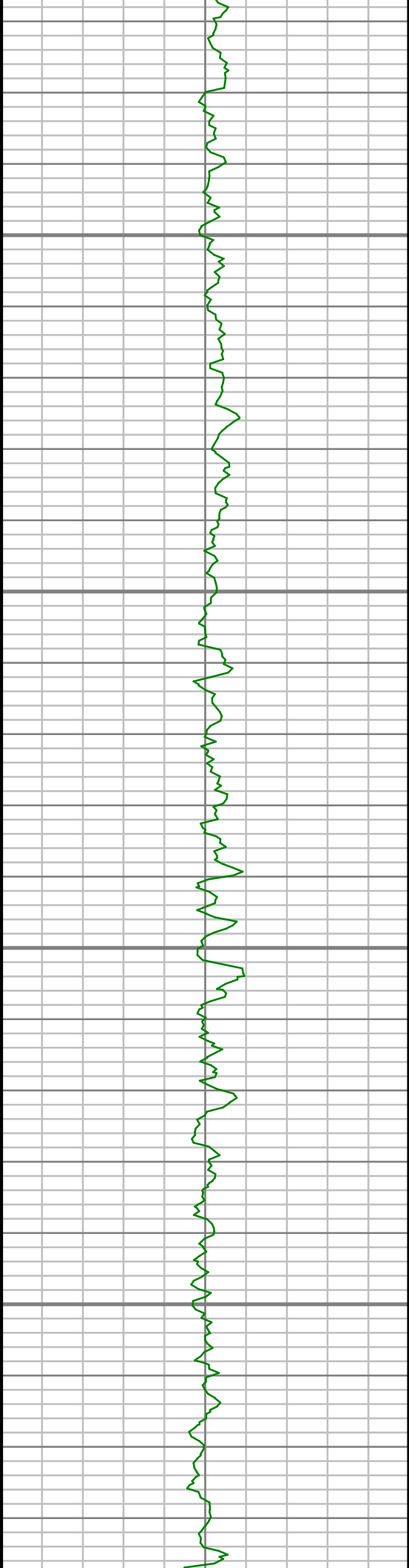
5400

5450

5500

5550



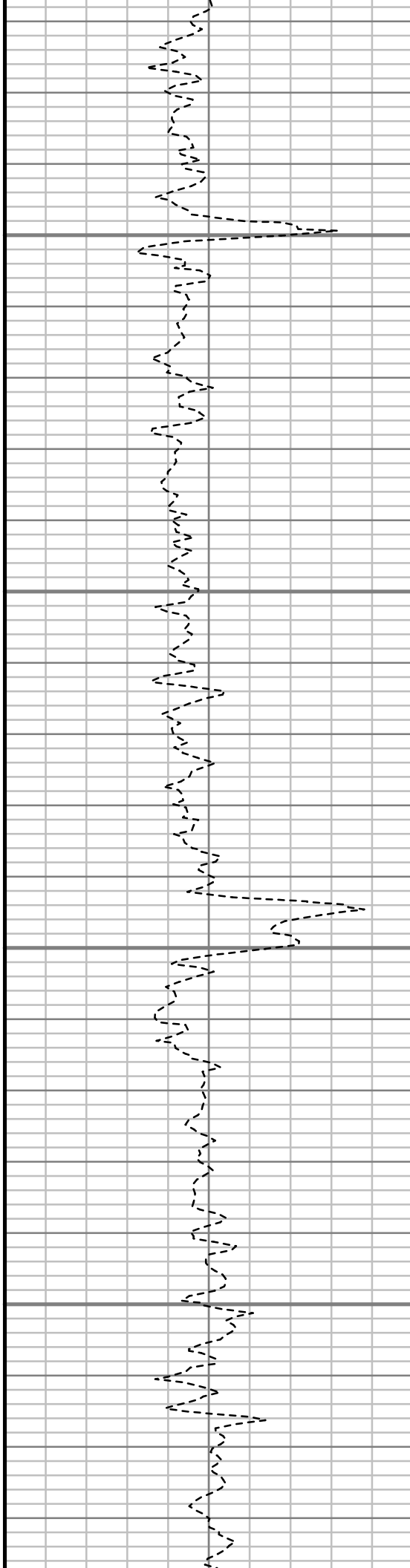


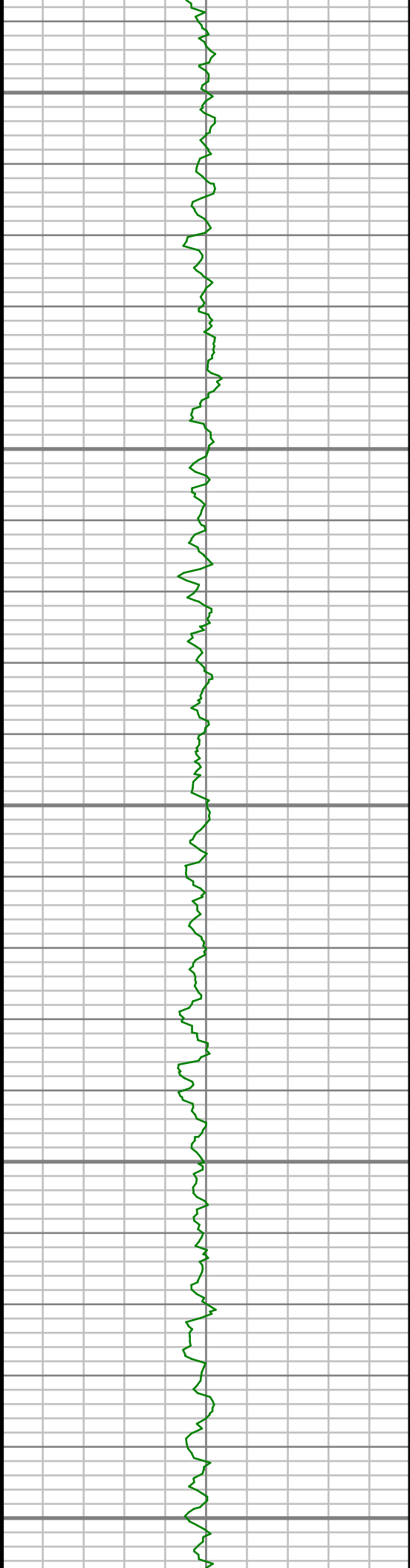
5600

5650

5700

5750





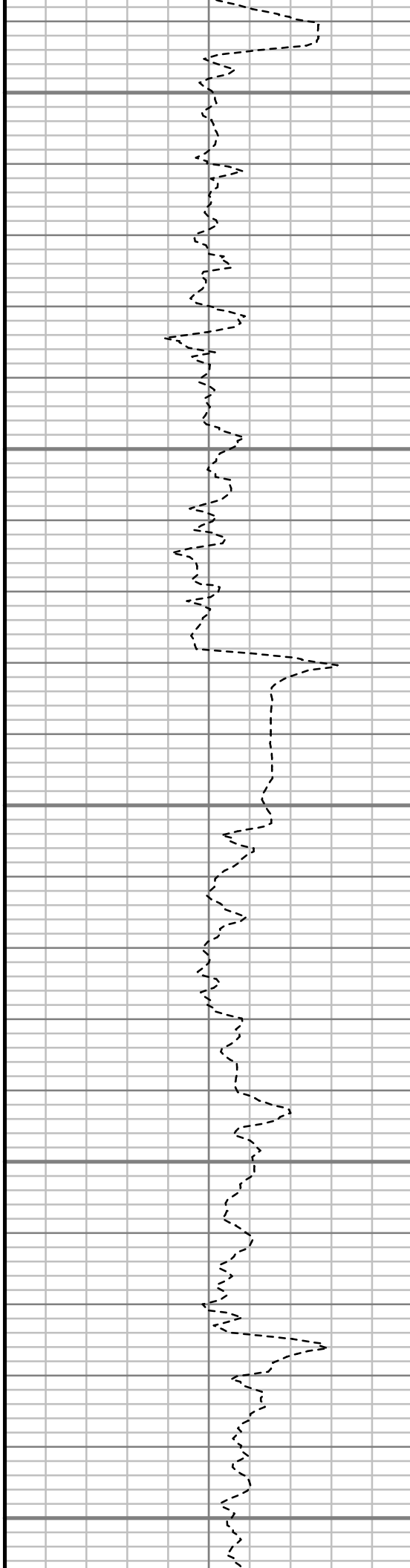
5800

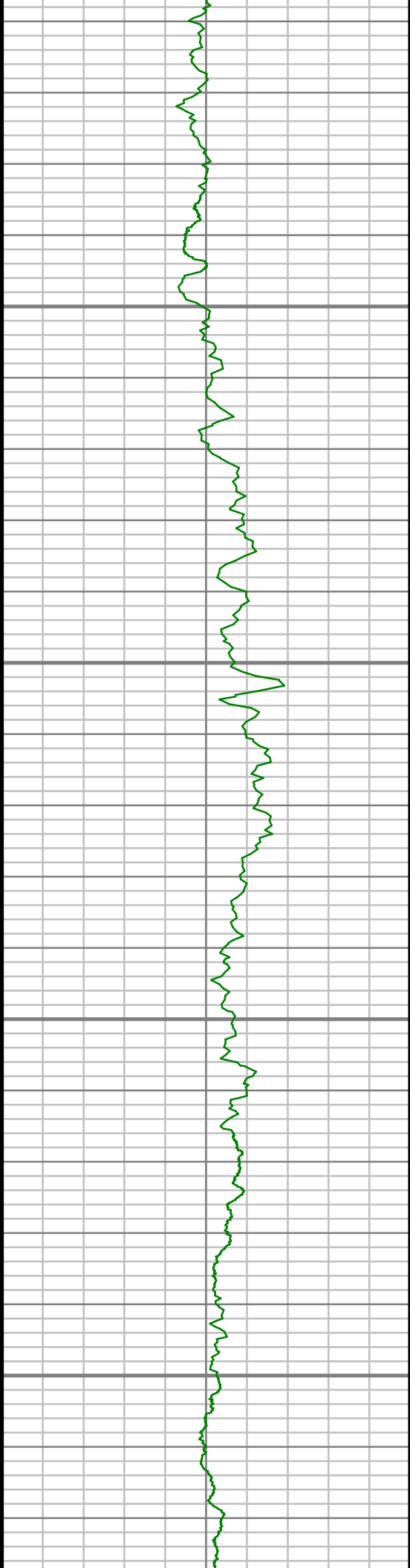
5850

5900

5950

6000





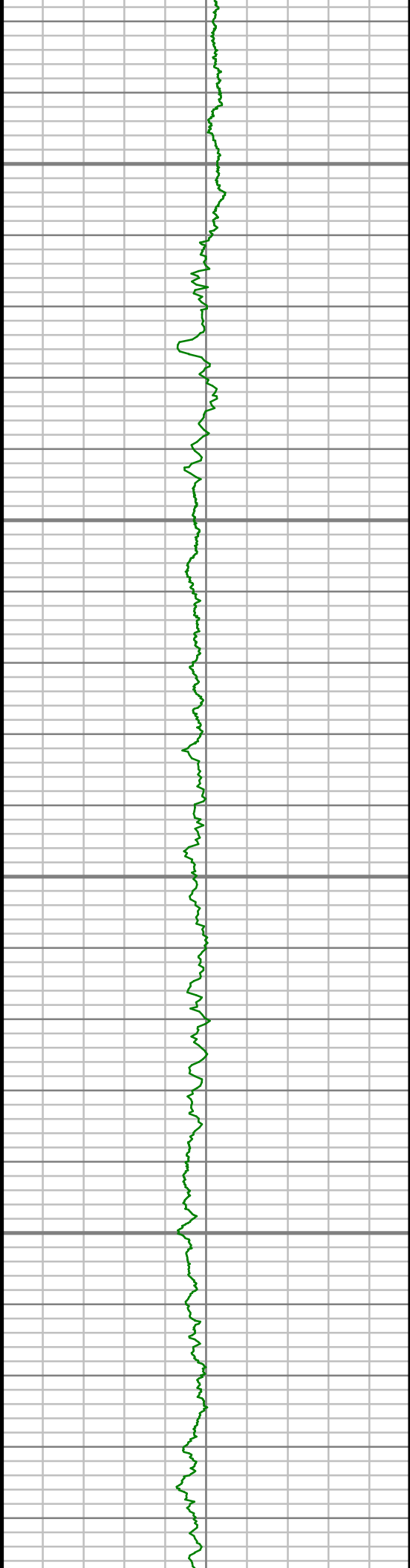
6050

6100

6150

6200



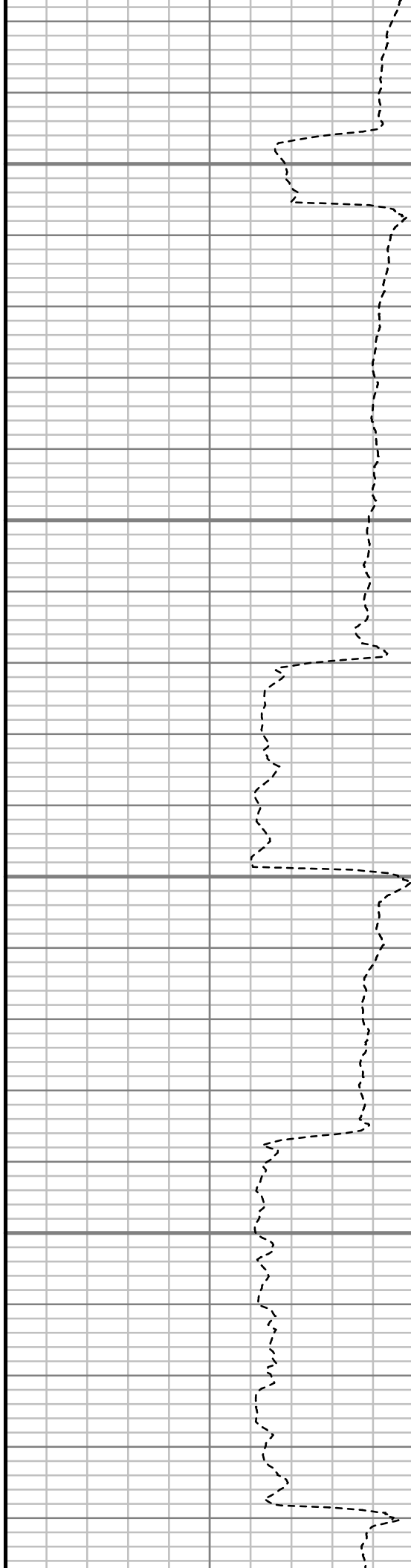


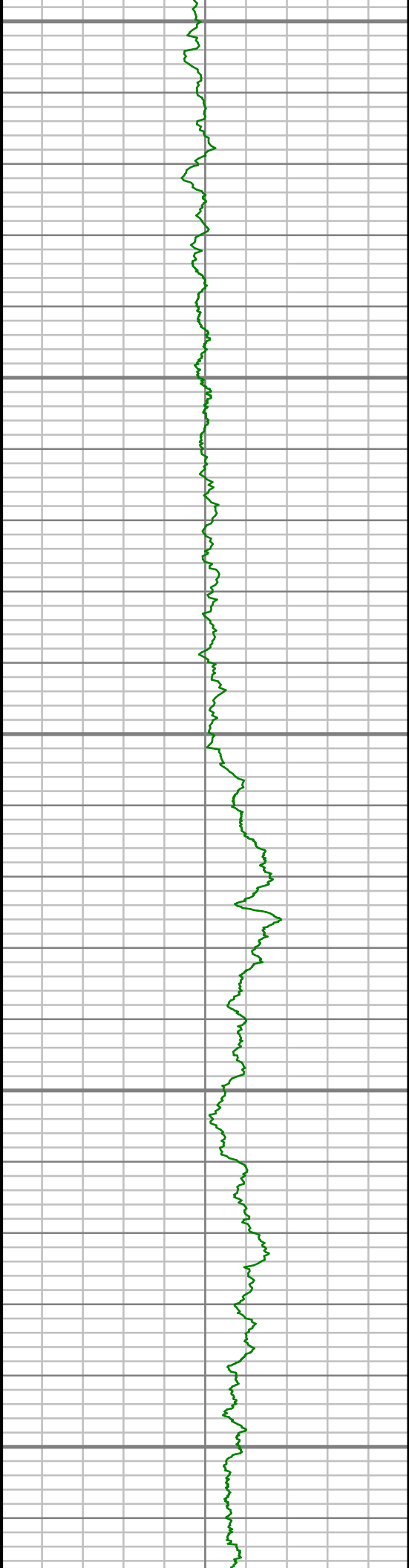
6250

6300

6350

6400





6450

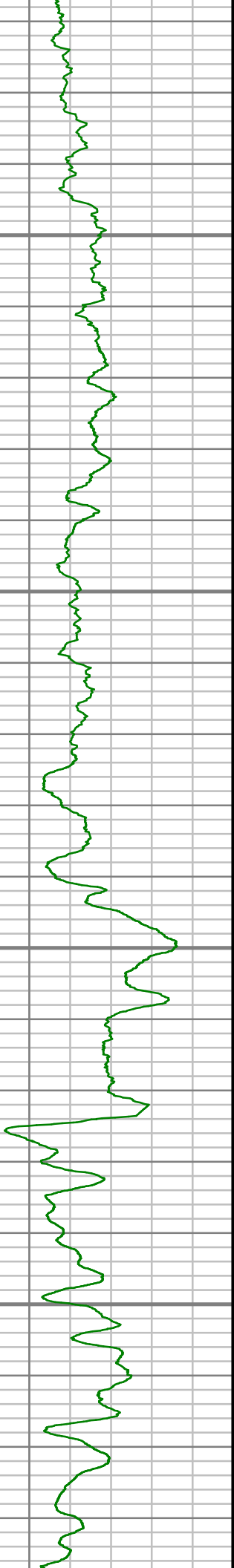
6500

6550

6600

6650



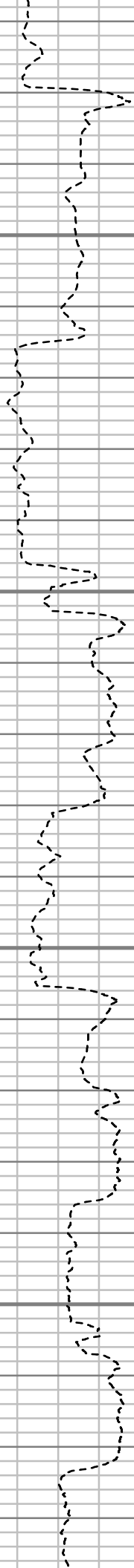


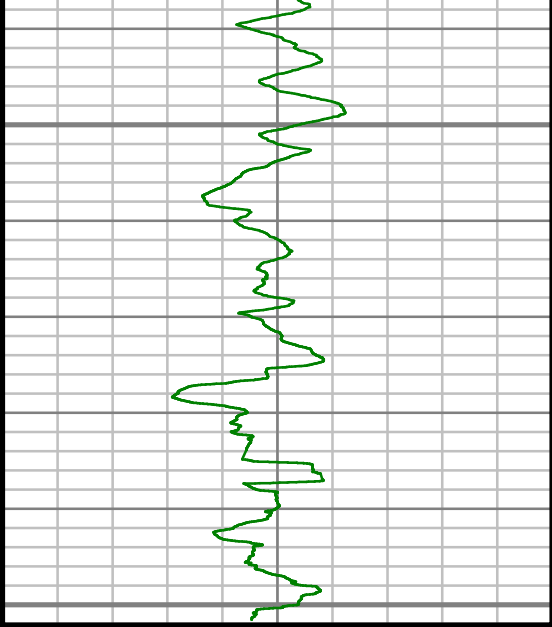
6700

6750

6800

6850



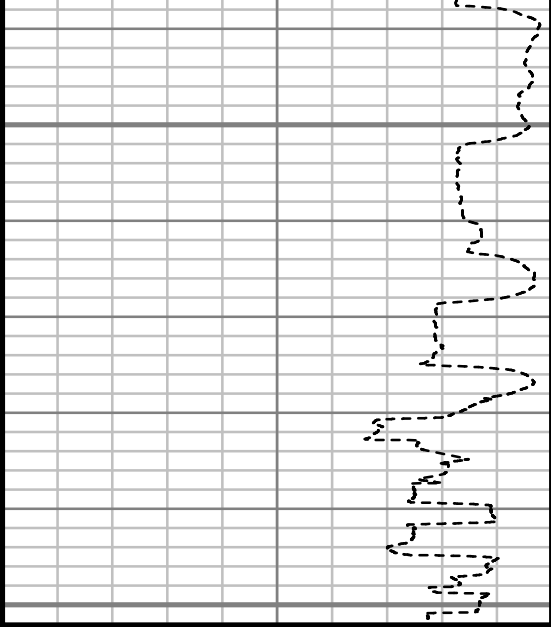


Gamma Ray (GR)		
0	Unit = aapi	150

6900

6950

TRUE VERTICAL DEPTH
1-240 (ft)



Rate of Penetration (ROP)		
850	Unit = ft/hr	0

Comments

MWD Survey Report

Well Location	NEWNAM
Well Name	NEWNAM 2H-32H-C264
Survey Date	12/29/2014
Latitude	40°6'5.278"N
Longitude	104°34'42.449"W
Btotal	52505 nT
Dip	66.71 deg
Magnetic Declination	8.37 deg
North Reference	True North
Grid Correction	None
Depth Reference	RKB (13.00 ft)
Calculation Method	Minimum Curvature
Section (VS) Ref	0.00N (ft), 0.00E (ft), 180.00Azim (deg)
Operator(s)	J. QUIMBY, M. SMITH, T. MORGAN, T. WHEELER

Well Notes

SURVEYS FROM 100 FT. - 900 FT. ACQUIRED BY VAUGHN ENERGY SERVICES GYRO.

SURVEYS FROM 1178 FT. - 11269 FT. ACQUIRED BY SCIENTIFIC DRILLINING INTERNATIONAL MWD.

MD	Inc	Azim	TVD	VS	+N/-S	+E/-W	Closure Direction	Closure Distance	DLS
ft	deg	deg	ft	ft	ft	ft	deg	ft	°/100ft
0.00	0.00	0.00	0.00	0.00	0.00	0.00	0.00	0.00	Invalid
100.00	0.11	133.18	100.00	0.07	-0.07	0.07	133.18	0.10	0.11
200.00	0.36	227.65	200.00	0.34	-0.34	-0.09	194.24	0.35	0.38
300.00	1.44	336.92	299.99	-0.61	0.61	-0.81	306.79	1.01	1.60
400.00	3.21	344.22	399.90	-4.46	4.46	-2.07	335.15	4.92	1.79
500.00	4.76	348.23	499.66	-11.22	11.22	-3.67	341.86	11.80	1.57
600.00	6.13	352.37	599.21	-20.57	20.57	-5.23	345.74	21.22	1.43
700.00	10.31	357.39	698.16	-34.80	34.80	-6.35	349.66	35.38	4.23
800.00	10.95	358.31	796.44	-53.24	53.24	-7.03	352.47	53.70	0.67
900.00	10.59	351.71	894.68	-71.83	71.83	-8.64	353.14	72.35	1.29
1178.00	9.98	350.83	1168.21	-120.89	120.89	-16.16	352.38	121.96	0.23
1271.00	10.98	346.75	1259.66	-137.47	137.47	-19.48	351.94	138.84	1.34
1457.00	10.52	346.09	1442.40	-171.18	171.18	-27.62	350.83	173.40	0.26
1648.00	10.13	337.51	1630.32	-203.62	203.62	-38.24	349.36	207.18	0.83
1838.00	7.74	328.71	1818.01	-230.01	230.01	-51.28	347.43	235.65	1.45
2029.00	4.64	331.21	2007.87	-247.78	247.78	-61.68	346.02	255.34	1.63
2219.00	0.13	143.06	2197.67	-254.34	254.34	-65.25	345.61	262.58	2.51
2410.00	0.27	49.37	2388.67	-254.45	254.45	-64.78	345.72	262.57	0.16
2601.00	0.30	99.71	2579.67	-254.66	254.66	-63.94	345.91	262.56	0.13

MD	Inc	Azim	TVD	VS	+N/-S	+E/-W	Closure Direction	Closure Distance	DLS
ft	deg	deg	ft	ft	ft	ft	deg	ft	°/100ft
2791.00	0.57	92.01	2769.66	-254.54	254.54	-62.49	346.21	262.10	0.15
2982.00	0.44	158.55	2960.65	-253.83	253.83	-61.27	346.43	261.12	0.30
3172.00	0.28	64.82	3150.65	-253.35	253.35	-60.58	346.55	260.50	0.28
3363.00	0.31	29.39	3341.65	-254.00	254.00	-59.89	346.73	260.97	0.10
3553.00	0.27	232.54	3531.65	-254.18	254.18	-60.00	346.72	261.16	0.30
3743.00	0.57	37.00	3721.65	-254.66	254.66	-59.79	346.79	261.59	0.44
3934.00	1.77	181.78	3912.62	-252.47	252.47	-59.30	346.78	259.34	1.18
4124.00	1.19	183.63	4102.56	-247.58	247.58	-59.52	346.48	254.63	0.31
4315.00	1.22	277.01	4293.53	-245.86	245.86	-61.67	345.92	253.47	0.92
4505.00	1.52	289.05	4483.47	-246.92	246.92	-66.06	345.02	255.61	0.21
4696.00	1.60	290.18	4674.40	-248.67	248.67	-70.95	344.08	258.59	0.05
4886.00	1.24	173.86	4864.37	-247.53	247.53	-73.22	343.52	258.13	1.28
5077.00	0.45	25.95	5055.36	-246.14	246.14	-72.67	343.55	256.65	0.86
5267.00	1.29	321.41	5245.34	-248.48	248.48	-73.67	343.49	259.17	0.61
5457.00	1.92	62.90	5435.29	-251.60	251.60	-72.16	344.00	261.74	1.32
5647.00	0.58	310.19	5625.26	-253.67	253.67	-70.06	344.56	263.17	1.16
5837.00	0.41	73.91	5815.25	-254.48	254.48	-70.13	344.59	263.97	0.46
6027.00	1.21	77.23	6005.23	-255.12	255.12	-67.51	345.18	263.90	0.42

MD	Inc	Azim	TVD	VS	+N/-S	+E/-W	Closure Direction	Closure Distance	DLS
ft	deg	deg	ft	ft	ft	ft	deg	ft	°/100ft
6181.00	1.56	199.71	6159.21	-253.50	253.50	-66.64	345.27	262.12	1.58
6218.00	1.40	207.59	6196.20	-252.63	252.63	-67.01	345.14	261.37	0.70
6312.00	10.58	185.67	6289.59	-243.01	243.01	-68.40	344.28	252.45	9.89
6408.00	20.50	182.29	6381.97	-217.38	217.38	-69.95	342.16	228.35	10.37
6503.00	26.27	182.69	6469.13	-179.73	179.73	-71.60	338.28	193.46	6.08
6597.00	31.12	181.97	6551.56	-134.64	134.64	-73.41	331.40	153.36	5.18
6693.00	36.93	178.54	6631.10	-80.97	80.97	-73.53	317.75	109.38	6.37
6788.00	44.73	179.15	6702.92	-18.91	18.91	-72.31	284.66	74.74	8.23
6883.00	49.84	179.31	6767.35	50.86	-50.86	-71.38	234.53	87.64	5.38
6978.00	59.03	180.00	6822.54	128.05	-128.05	-70.94	208.99	146.39	9.70
7074.00	66.81	180.06	6866.21	213.46	-213.46	-70.98	198.39	224.95	8.10
7169.00	75.55	180.11	6896.83	303.29	-303.29	-71.11	193.20	311.52	9.20
7264.00	81.15	179.32	6916.00	396.30	-396.30	-70.64	190.11	402.55	5.96
7286.00	82.11	179.53	6919.21	418.06	-418.06	-70.43	189.56	423.95	4.44
7355.00	86.11	180.41	6926.29	486.68	-486.68	-70.39	188.23	491.75	5.94
7368.00	87.62	180.61	6927.00	499.66	-499.66	-70.50	188.03	504.61	11.68
7459.00	89.03	179.77	6929.67	590.62	-590.62	-70.81	186.84	594.85	1.80
7536.00	89.03	179.93	6930.97	667.61	-667.61	-70.61	186.04	671.33	0.21

MD	Inc	Azim	TVD	VS	+N/-S	+E/-W	Closure Direction	Closure Distance	DLS
ft	deg	deg	ft	ft	ft	ft	deg	ft	°/100ft
7629.00	88.73	179.90	6932.80	760.59	-760.59	-70.47	185.29	763.85	0.33
7722.00	90.00	180.38	6933.83	853.58	-853.58	-70.70	184.73	856.51	1.47
7815.00	90.34	180.44	6933.56	946.58	-946.58	-71.37	184.31	949.27	0.37
7910.00	91.07	180.01	6932.39	1041.57	-1041.57	-71.74	183.94	1044.04	0.90
8005.00	89.30	179.51	6932.08	1136.57	-1136.57	-71.34	183.59	1138.80	1.94
8100.00	89.20	178.82	6933.34	1231.55	-1231.55	-69.95	183.25	1233.53	0.74
8195.00	89.03	179.12	6934.81	1326.52	-1326.52	-68.24	182.94	1328.27	0.37
8290.00	89.70	179.71	6935.87	1421.51	-1421.51	-67.28	182.71	1423.10	0.94
8385.00	89.80	179.57	6936.28	1516.50	-1516.50	-66.69	182.52	1517.97	0.18
8480.00	90.74	179.69	6935.84	1611.50	-1611.50	-66.08	182.35	1612.85	1.00
8575.00	90.87	179.41	6934.50	1706.49	-1706.49	-65.33	182.19	1707.74	0.33
8670.00	90.97	179.41	6932.97	1801.47	-1801.47	-64.35	182.05	1802.62	0.10
8766.00	90.34	179.09	6931.88	1897.46	-1897.46	-63.09	181.90	1898.50	0.74
8861.00	91.17	180.44	6930.62	1992.44	-1992.44	-62.69	181.80	1993.43	1.67
8956.00	91.28	181.83	6928.59	2087.40	-2087.40	-64.57	181.77	2088.40	1.48
9051.00	90.27	181.71	6927.31	2182.35	-2182.35	-67.51	181.77	2183.39	1.07
9164.00	90.07	180.75	6926.98	2295.32	-2295.32	-69.94	181.75	2296.38	0.86
9242.00	89.90	180.75	6927.01	2373.31	-2373.31	-70.96	181.71	2374.37	0.21

MD	Inc	Azim	TVD	VS	+N/-S	+E/-W	Closure Direction	Closure Distance	DLS
ft	deg	deg	ft	ft	ft	ft	deg	ft	°/100ft
9337.00	89.70	180.64	6927.34	2468.30	-2468.30	-72.12	181.67	2469.36	0.24
9433.00	89.40	180.48	6928.10	2564.30	-2564.30	-73.06	181.63	2565.34	0.35
9528.00	89.40	180.57	6929.10	2659.29	-2659.29	-73.93	181.59	2660.31	0.09
9623.00	89.33	180.27	6930.16	2754.28	-2754.28	-74.63	181.55	2755.29	0.33
9718.00	89.03	179.44	6931.52	2849.27	-2849.27	-74.38	181.50	2850.24	0.93
9814.00	88.99	179.70	6933.18	2945.25	-2945.25	-73.66	181.43	2946.17	0.27
9908.00	88.73	178.69	6935.04	3039.22	-3039.22	-72.33	181.36	3040.08	1.11
10004.00	89.09	179.74	6936.87	3135.19	-3135.19	-71.02	181.30	3136.00	1.16
10099.00	88.73	178.62	6938.68	3230.16	-3230.16	-69.65	181.24	3230.91	1.24
10194.00	88.73	180.63	6940.79	3325.13	-3325.13	-69.03	181.19	3325.85	2.12
10290.00	87.82	180.17	6943.68	3421.09	-3421.09	-69.70	181.17	3421.80	1.06
10385.00	89.26	181.05	6946.10	3516.05	-3516.05	-70.71	181.15	3516.76	1.78
10480.00	89.53	181.84	6947.10	3611.01	-3611.01	-73.09	181.16	3611.75	0.88
10575.00	88.76	182.45	6948.52	3705.93	-3705.93	-76.65	181.18	3706.72	1.04
10671.00	89.63	181.54	6949.87	3801.86	-3801.86	-80.00	181.21	3802.70	1.32
10766.00	88.99	181.96	6951.01	3896.81	-3896.81	-82.90	181.22	3897.69	0.80
10861.00	90.64	180.97	6951.31	3991.77	-3991.77	-85.33	181.22	3992.69	2.02
10957.00	91.27	180.59	6949.71	4087.75	-4087.75	-86.63	181.21	4088.67	0.77

MD	Inc	Azim	TVD	VS	+N/-S	+E/-W	Closure Direction	Closure Distance	DLS
ft	deg	deg	ft	ft	ft	ft	deg	ft	"/100ft
11052.00	91.61	180.73	6947.32	4182.72	-4182.72	-87.72	181.20	4183.64	0.38
11147.00	89.16	179.32	6946.69	4277.70	-4277.70	-87.77	181.18	4278.60	2.97
11242.00	89.43	179.56	6947.85	4372.69	-4372.69	-86.84	181.14	4373.55	0.37
11269.00	89.73	179.58	6948.05	4399.69	-4399.69	-86.63	181.13	4400.54	1.12

MD	Inc	Azim	TVD	VS	+N/-S	+E/-W	Closure Direction	Closure Distance	DLS
ft	deg	deg	ft	ft	ft	ft	deg	ft	°/100ft

5" = 100' FEET TVD