

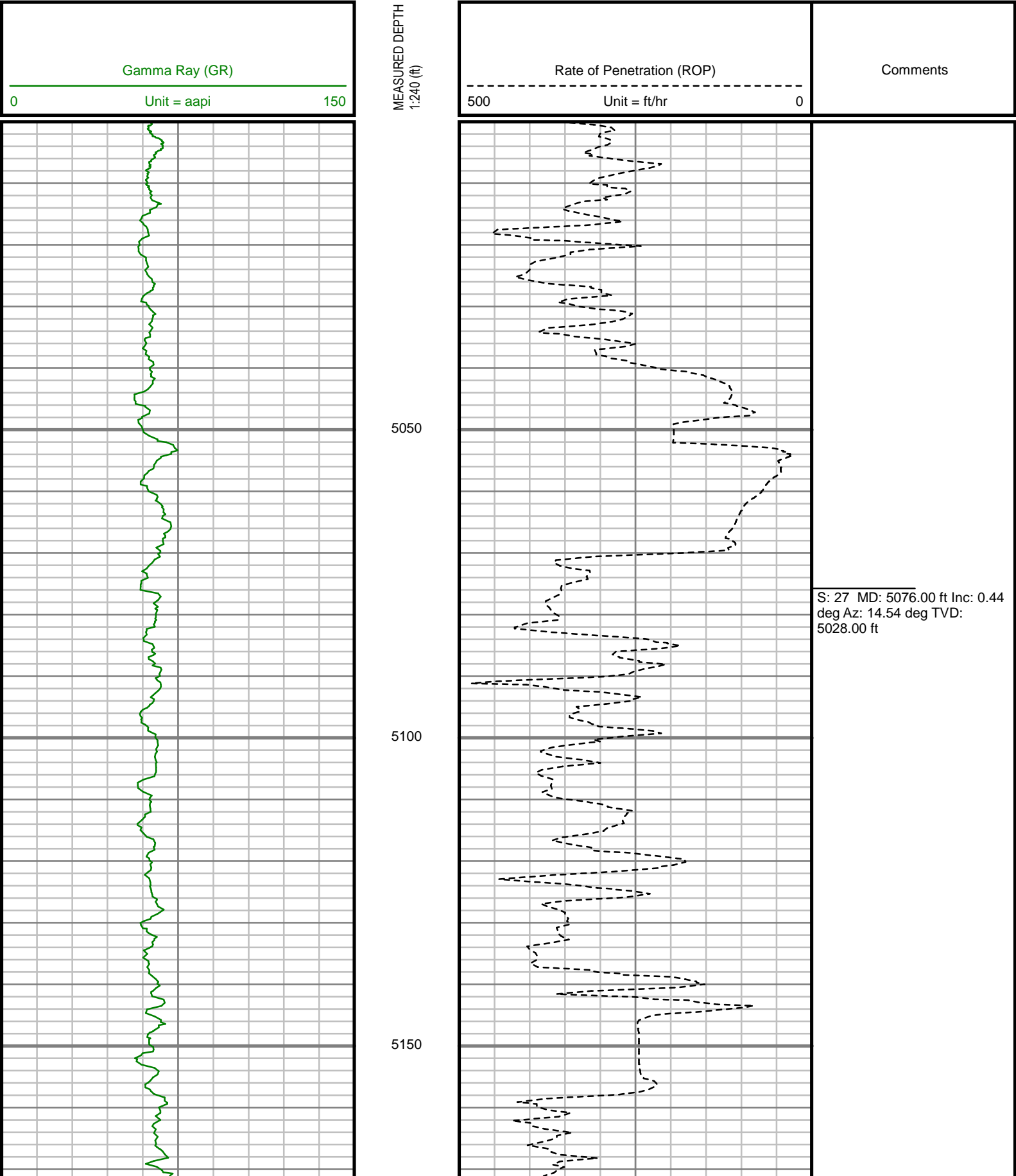


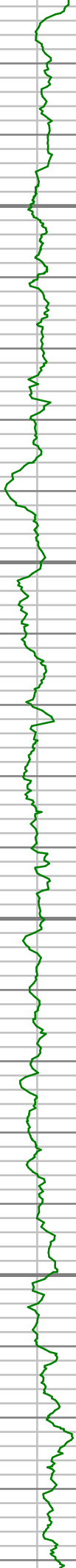
Remarks
ENCANA OIL & GAS (USA) INC PRODUCTION AFE# 13179014
SCIENTIFIC DRILLING INTERNATIONAL JOB# 232058
ALL REFERENCES IN THE DEPTH TRACK ARE AT BIT DEPTH.
ALL DATA IS MEMORY DATA UNLESS STATED OTHERWISE.
FLAT AVERAGE FILTER OF 1.00 FT APPLIED TO GAMMA RAY CURVE
FLAT AVERAGE FILTER OF 1.00 FT APPLIED TO RATE OF PENETRATION CURVE
RUN #1: MWD / DIRECTIONAL RUN
SENSORS S/N: PULSER = 128-374 / CONT = 218 / MWD EYE = 1065
BIT TO SENSOR OFFSET: SURVEY = 62.22 FT.
RUN #2: MWD / GAMMA RAY LOGGING RUN
SENSORS S/N: PULSER = 128-616 / CONT = 629 / MWD EYE = 0082 / GAMMA RAY = 1168
BIT TO SENSOR OFFSETS: SURVEY = 61.68 FT. / GAMMA RAY = 57.05 FT.
RUN #3: MWD / GAMMA RAY LOGGING RUN
SENSORS S/N: PULSER = 78-118 / CONT = 218 / MWD EYE = 1065 / GAMMA RAY = 1194
BIT TO SENSOR OFFSETS: SURVEY = 61.33 FT. / GAMMA RAY = 56.70 FT.
RUN #4: MWD / GAMMA RAY LOGGING RUN
SENSORS S/N: PULSER = 78-197 / CONT = 629 / MWD EYE = 0082 / GAMMA RAY = 1168
BIT TO SENSOR OFFSETS: SURVEY = 62.27 FT. / GAMMA RAY = 57.64 FT.

[illegible]

All interpretations are opinions based on inferences from electrical or other measurements and we cannot, and do not guarantee the accuracy or correctness of any interpretations, and we shall not, except in the case of gross or willful negligence on our part, be liable or responsible for any loss, costs, damages or expenses incurred or sustained by anyone resulting from any interpretation made by any of our officers, agents or employees. These interpretations are also subject to our general terms and conditions as set out in our current price schedule.

ENCANA OIL AND GAS (USA) INC  
NEWNAM 2F-32H-C264  
WATTENBERG FIELD  
WELD COUNTY, COLORADO  
05-123-39778



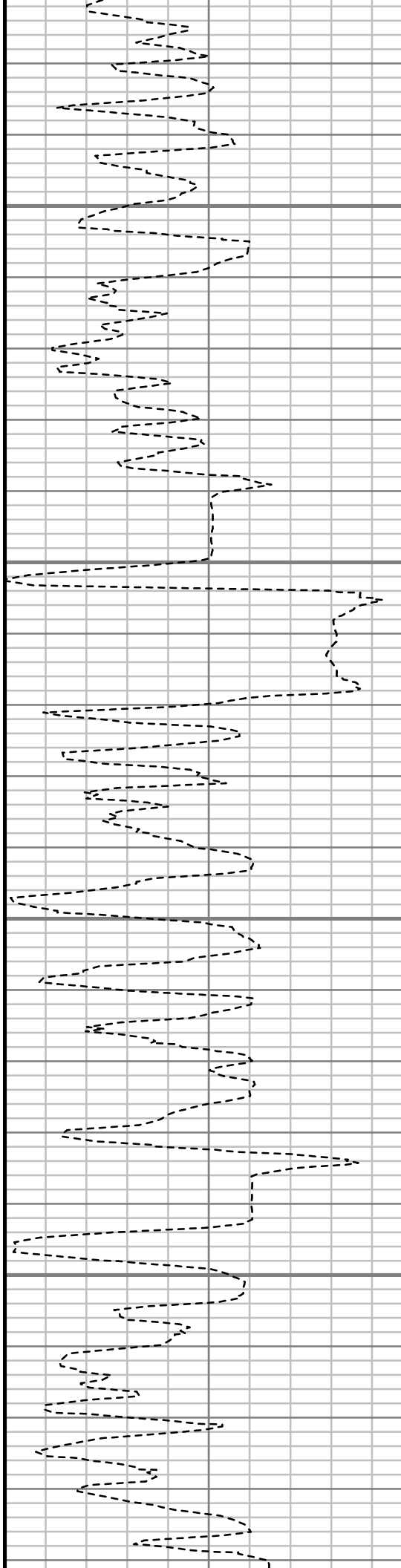


5200

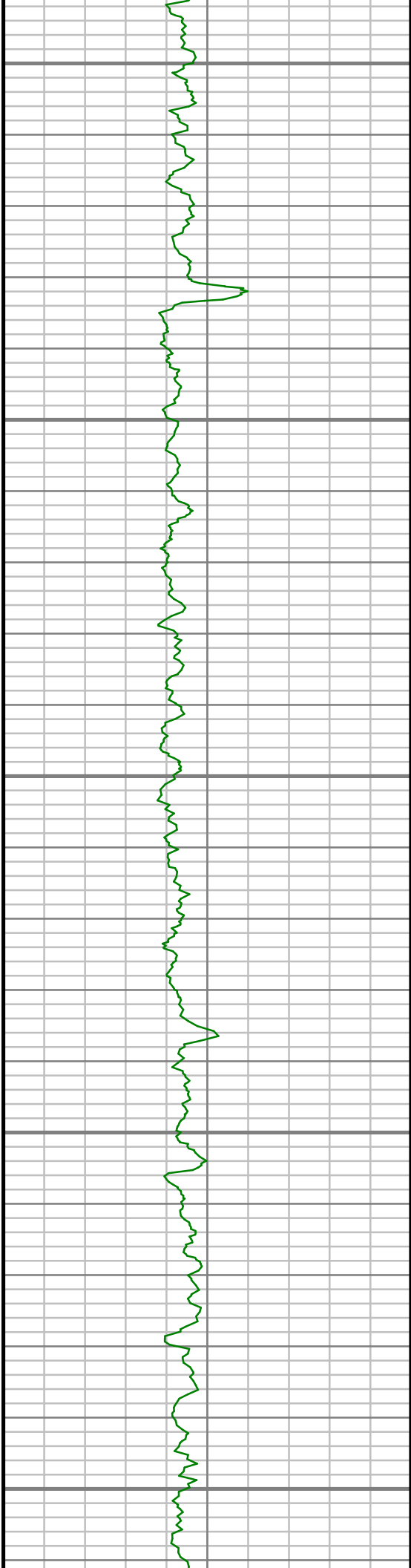
5250

5300

5350



S: 28 MD: 5266.00 ft Inc: 0.85  
deg Az: 189.04 deg TVD:  
5217.99 ft



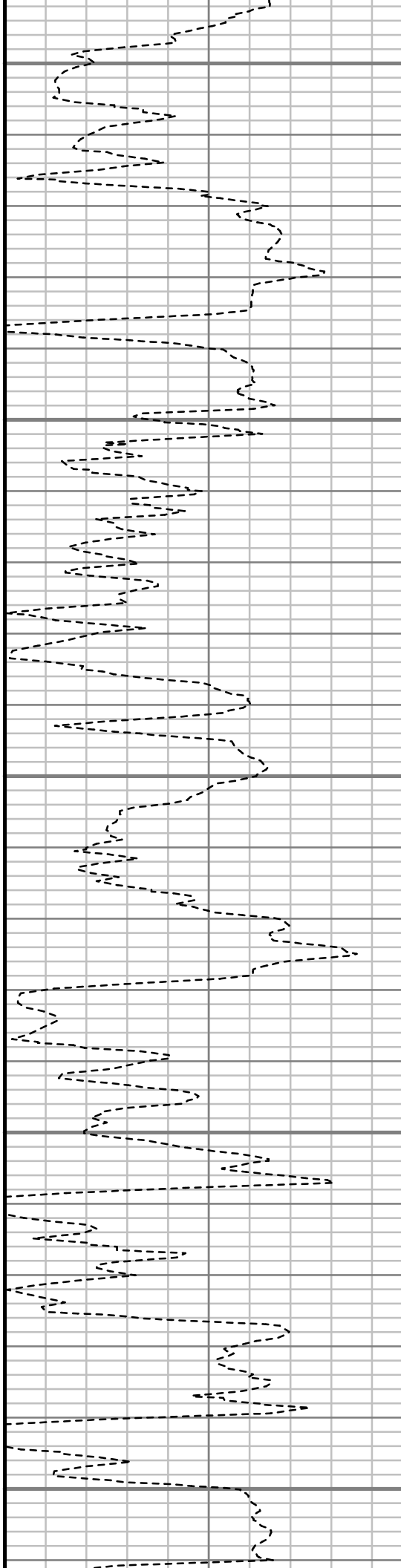
5400

5450

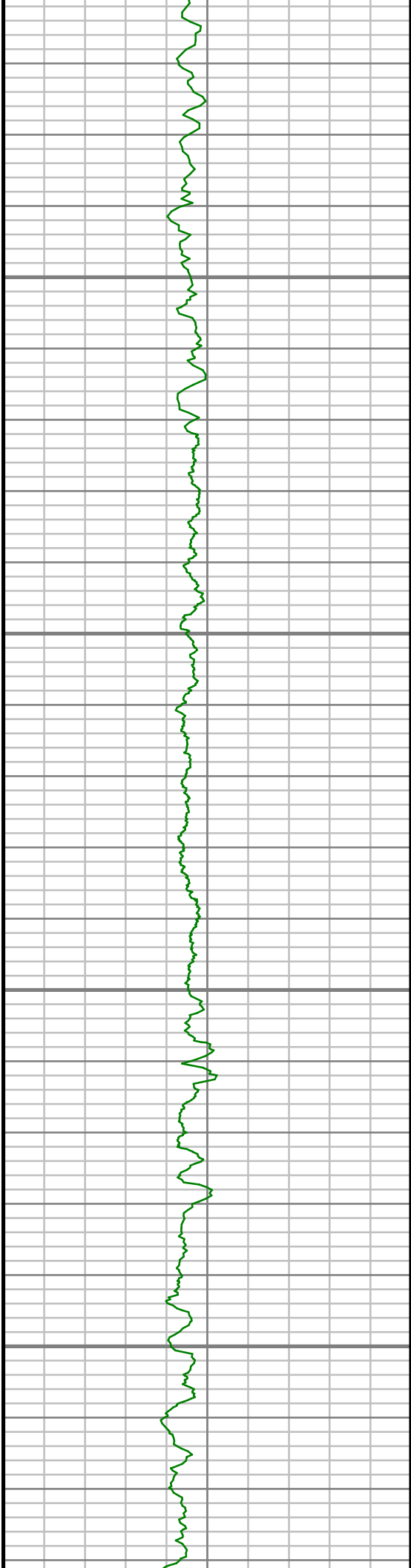
5500

5550

5600



S: 29 MD: 5457.00 ft Inc: 1.50  
deg Az: 204.74 deg TVD:  
5408.95 ft

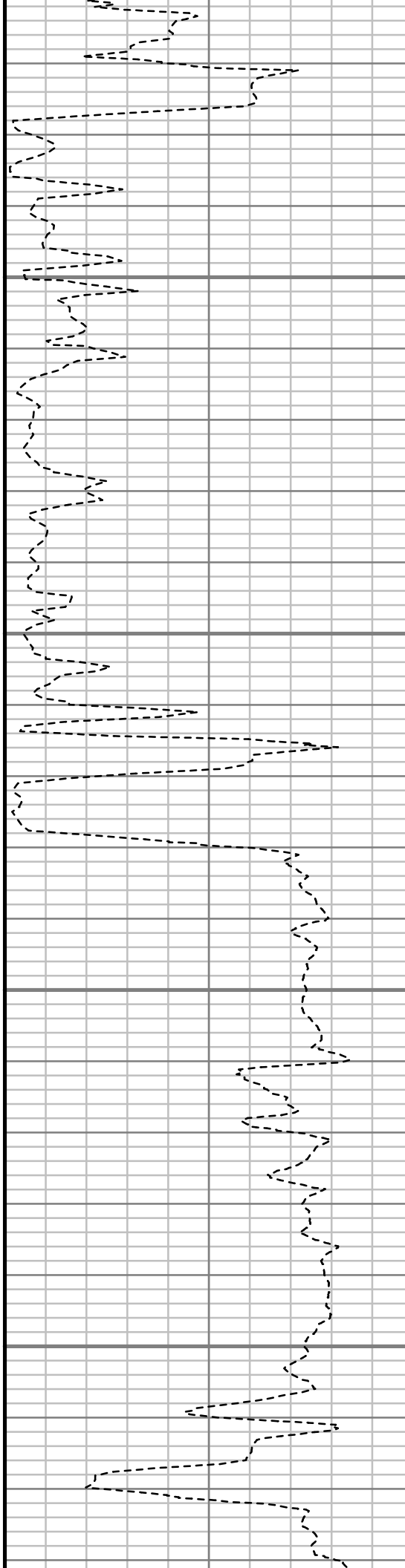


5650

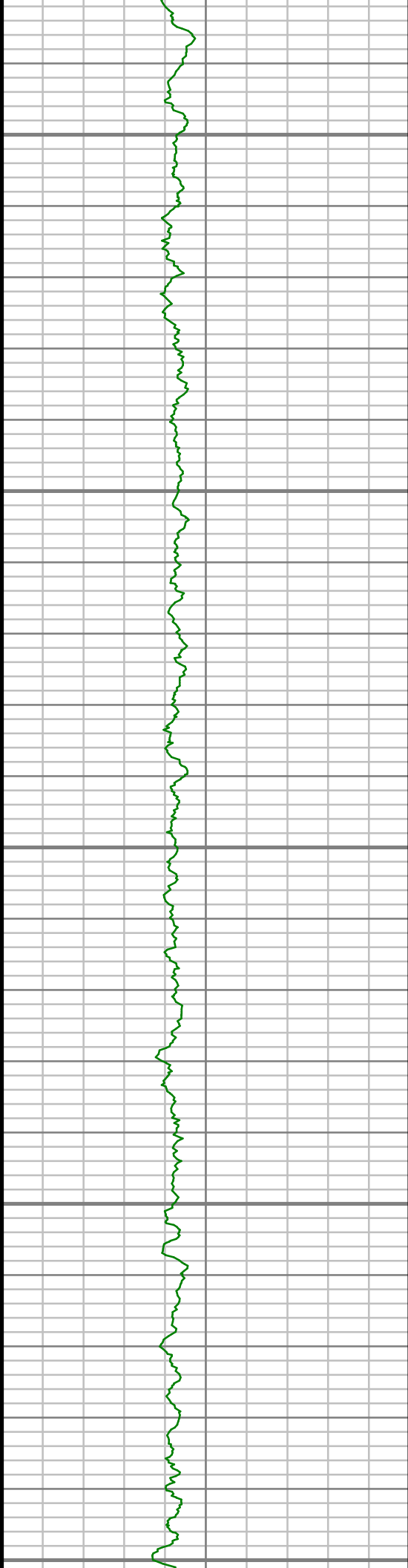
5700

5750

5800



S: 30 MD: 5646.00 ft Inc: 0.62  
deg Az: 187.44 deg TVD:  
5597.92 ft



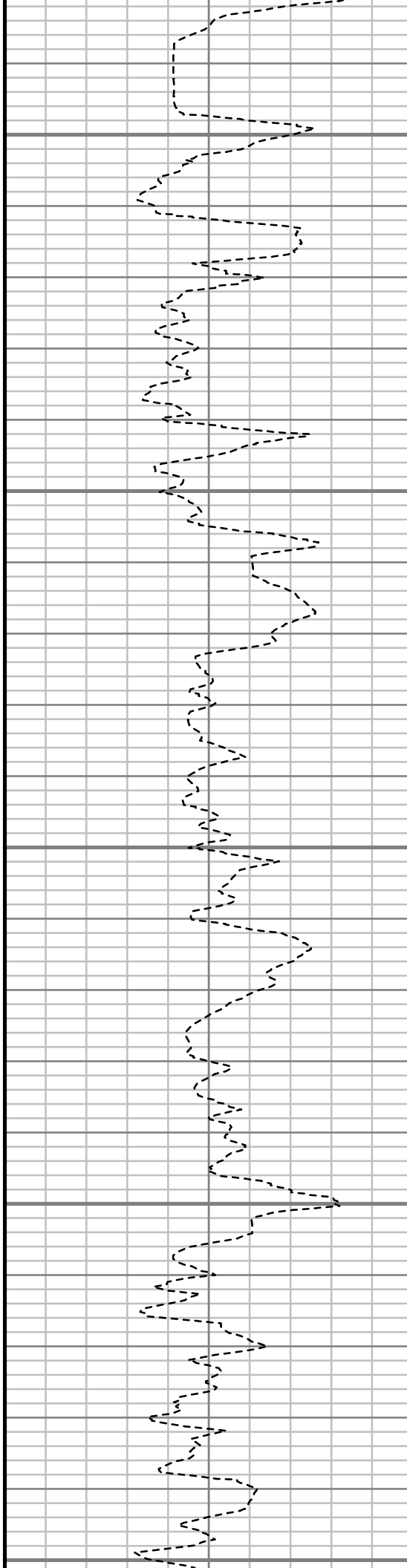
5850

5900

5950

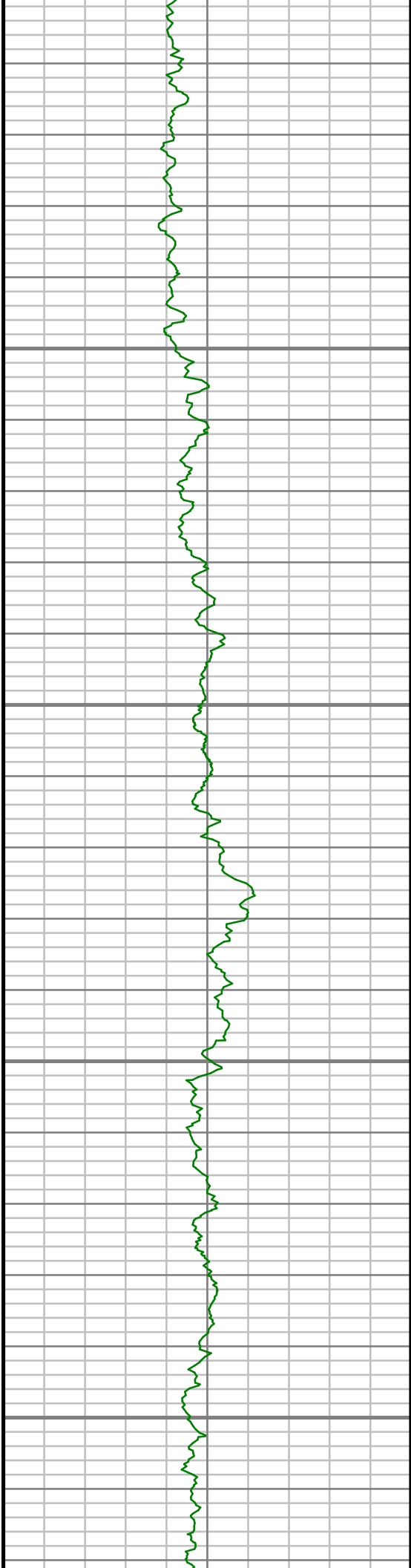
6000

6050



S: 31 MD: 5837.00 ft Inc: 1.10  
deg Az: 185.67 deg TVD:  
5788.89 ft

S: 32 MD: 6022.00 ft Inc: 1.64  
deg Az: 158.12 deg TVD:  
5973.84 ft

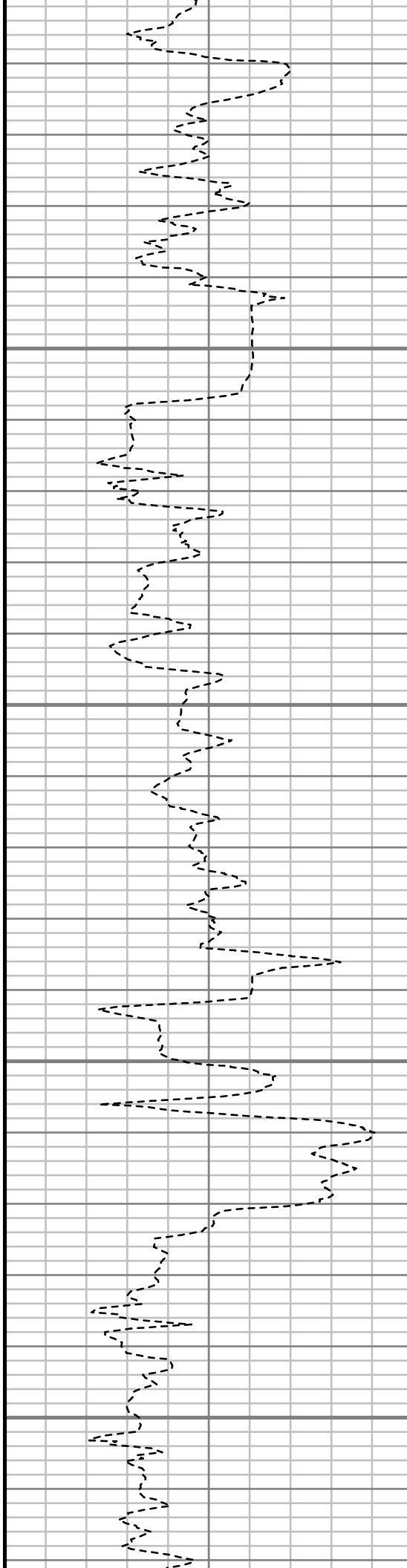


6100

6150

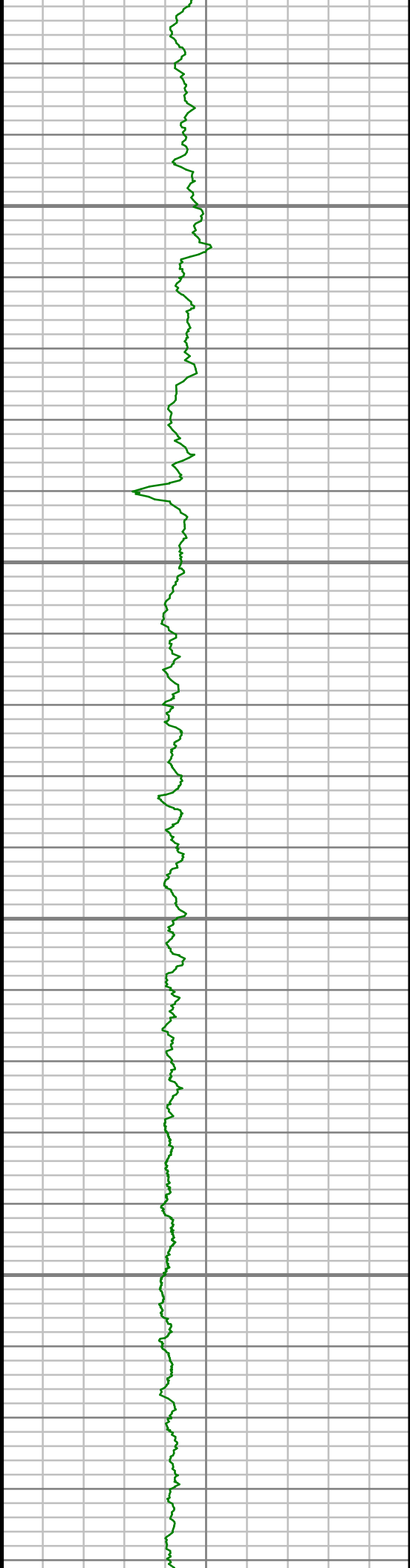
6200

6250



S: 33 MD: 6208.00 ft Inc: 1.02  
deg Az: 150.87 deg TVD:  
6159.79 ft



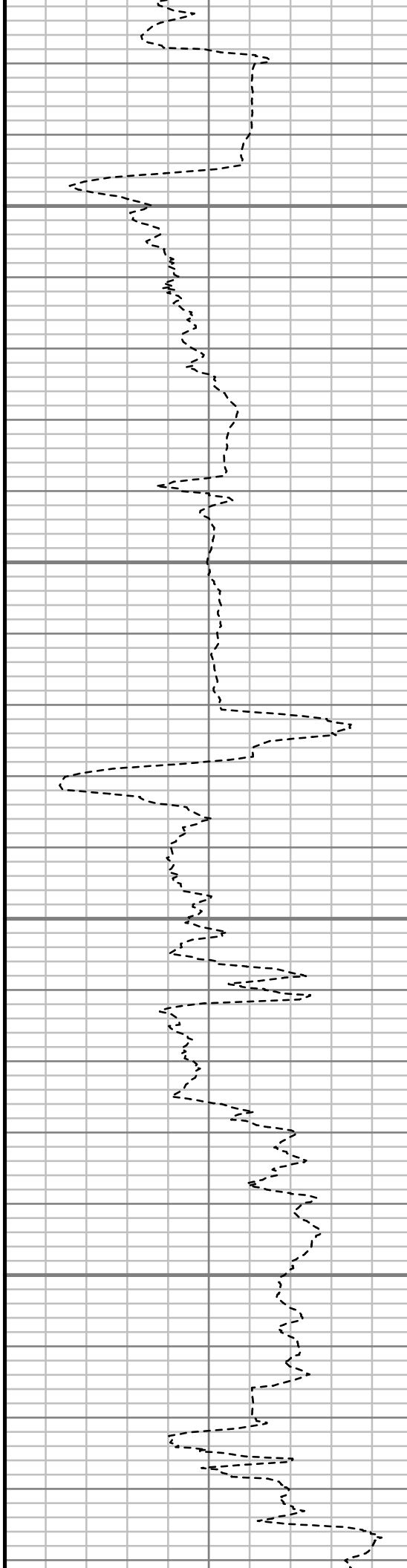


6300

6350

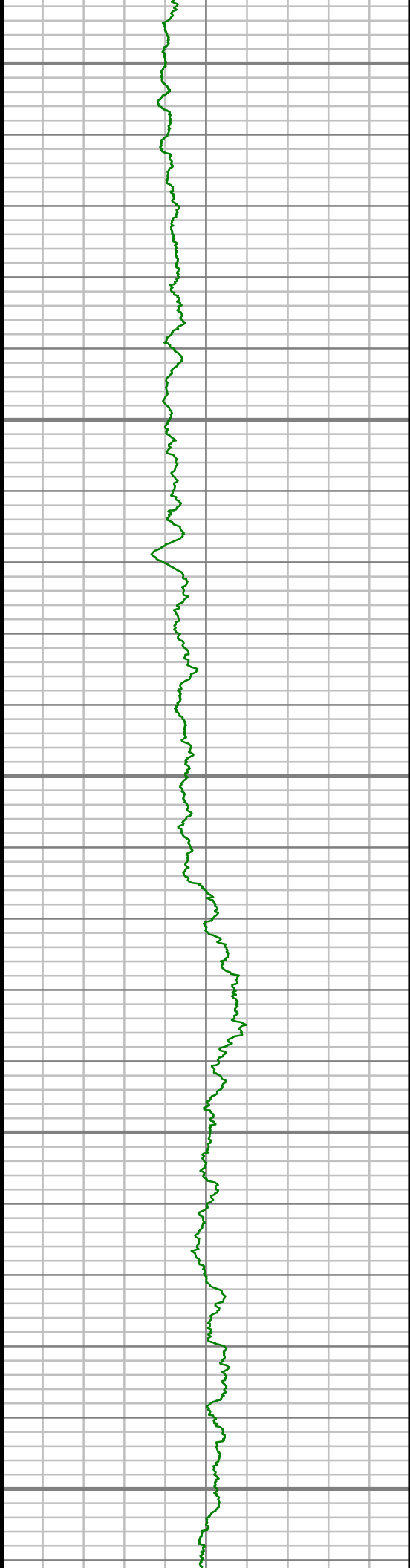
6400

6450



S: 34 MD: 6394.00 ft Inc: 0.86  
deg Az: 96.91 deg TVD:  
6345.77 ft

S: 35 MD: 6486.00 ft Inc: 2.22  
deg Az: 137.66 deg TVD:



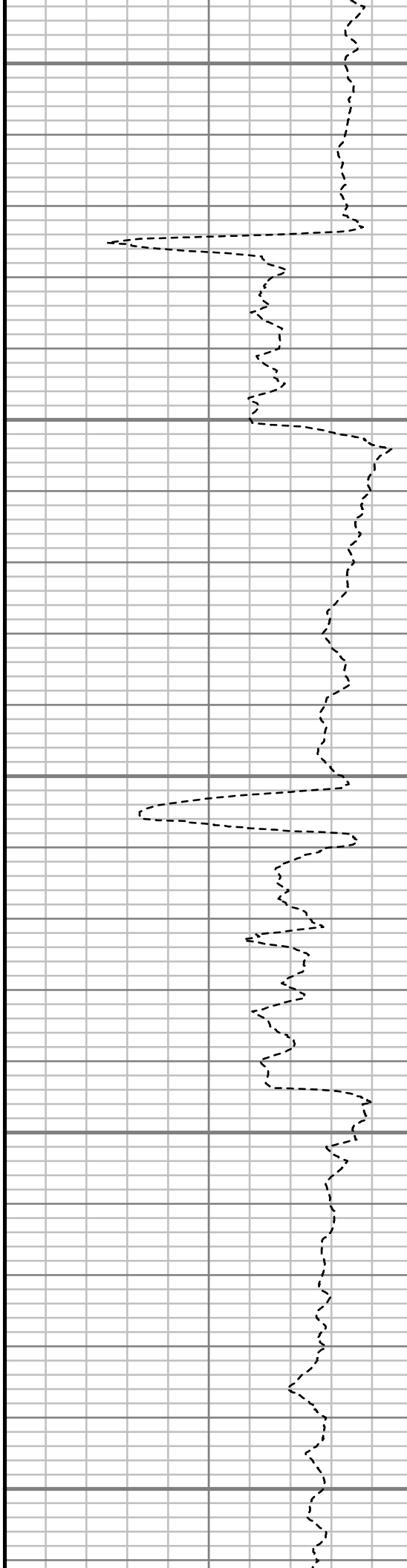
6500

6550

6600

6650

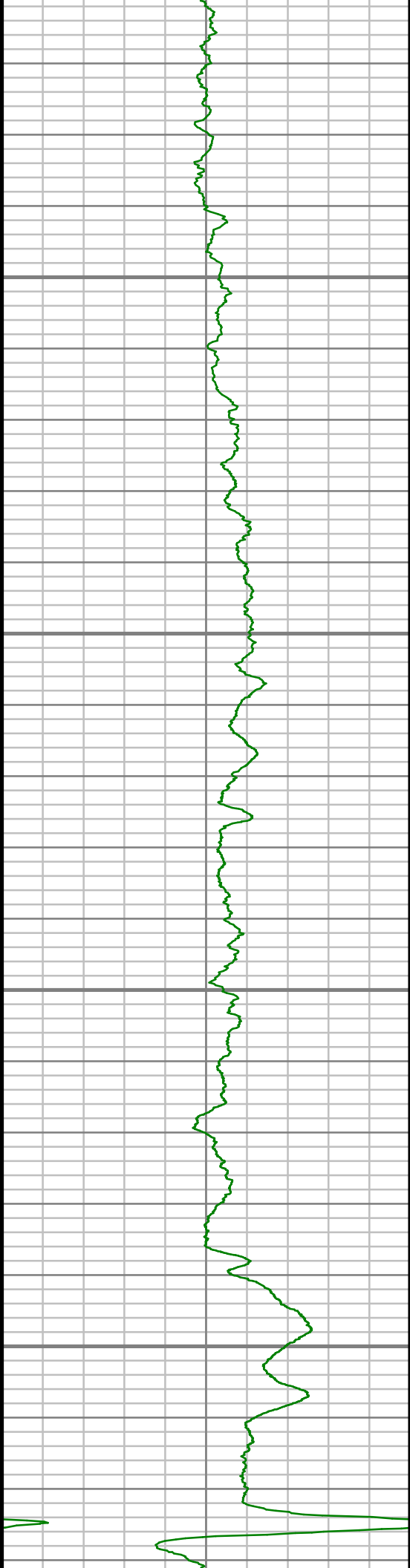
6700



6437.74 ft

S: 36 MD: 6579.00 ft Inc: 7.61  
deg Az: 170.46 deg TVD:  
6530.37 ft

S: 37 MD: 6672.00 ft Inc: 13.80  
deg Az: 175.24 deg TVD:  
6621.71 ft

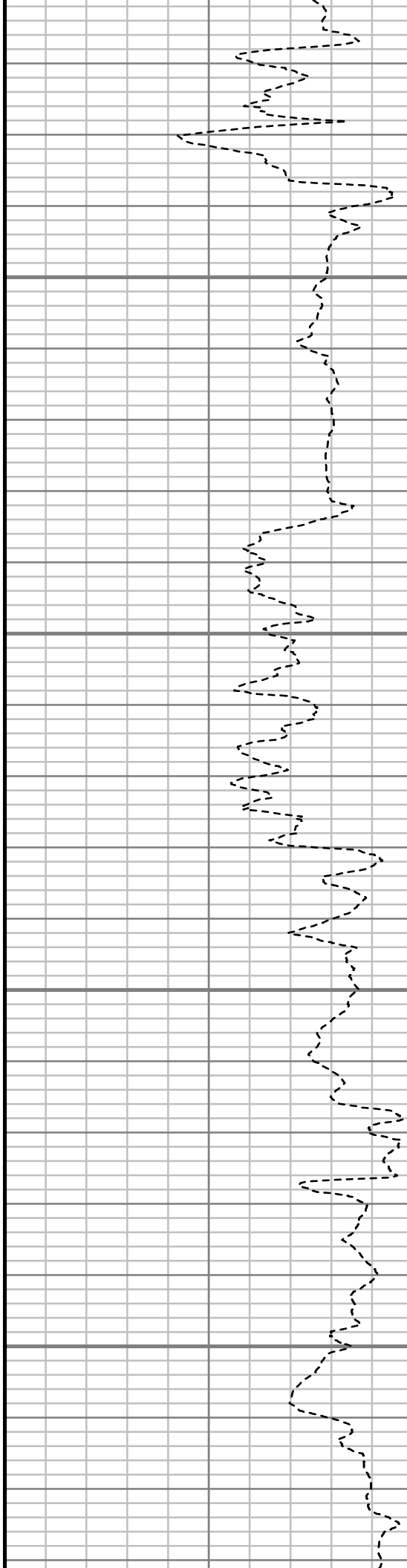


6750

6800

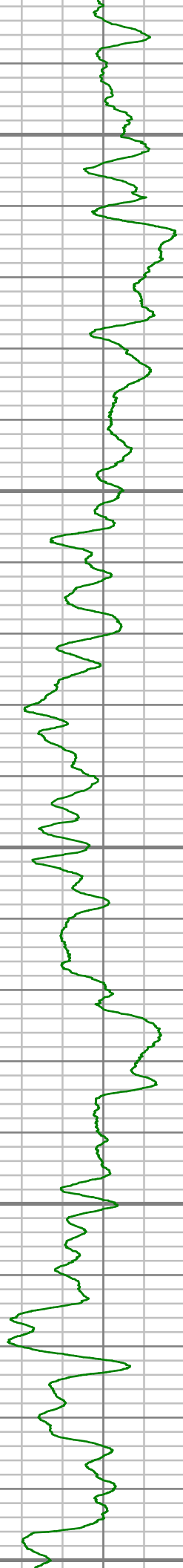
6850

6900



S: 38 MD: 6765.00 ft Inc: 25.38  
deg Az: 179.66 deg TVD:  
6709.19 ft

S: 39 MD: 6858.00 ft Inc: 31.30  
deg Az: 178.32 deg TVD:  
6791.00 ft



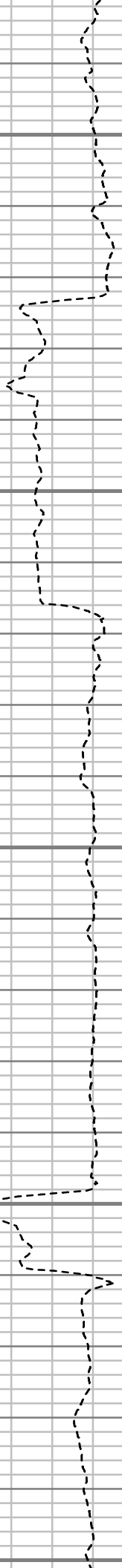
6950

7000

7050

7100

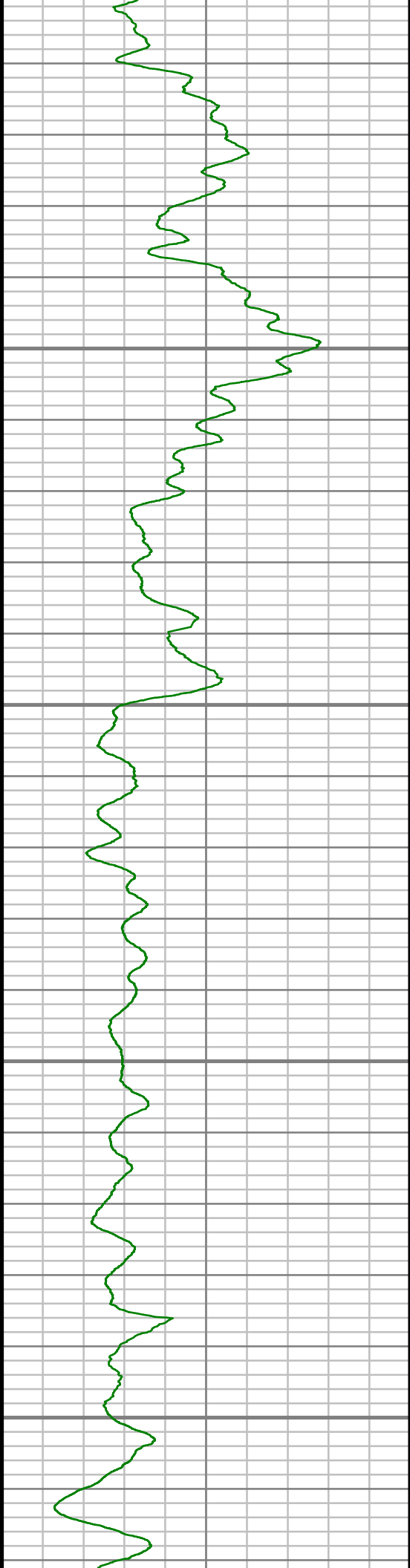
7150



S: 40 MD: 6951.00 ft Inc: 35.47  
deg Az: 180.13 deg TVD:  
6868.64 ft

S: 41 MD: 7044.00 ft Inc: 38.65  
deg Az: 179.27 deg TVD:  
6942.85 ft

S: 42 MD: 7137.00 ft Inc: 47.90  
deg Az: 180.17 deg TVD:  
7010.49 ft

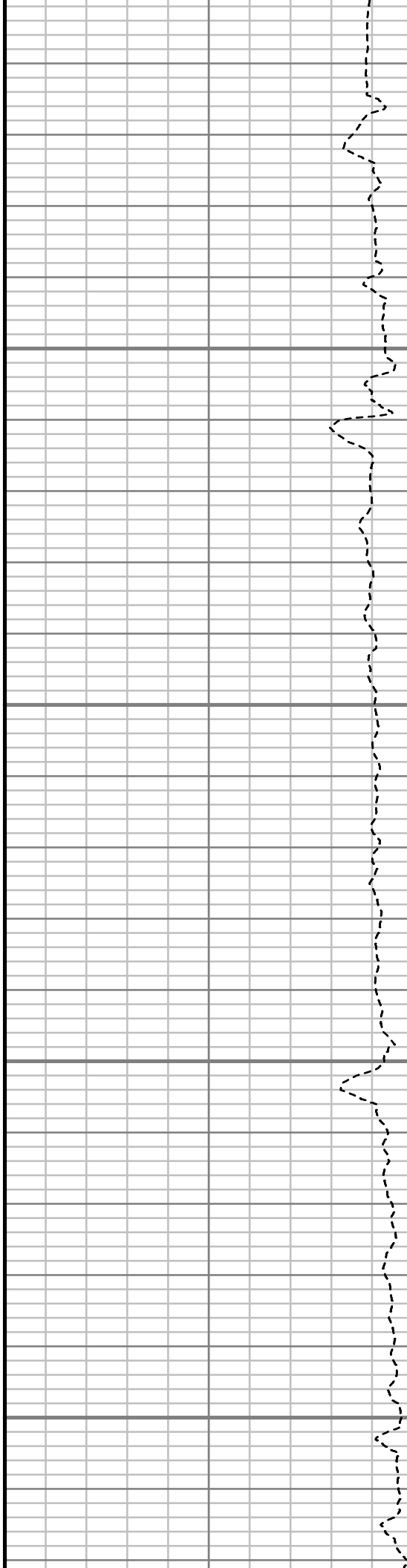


7200

7250

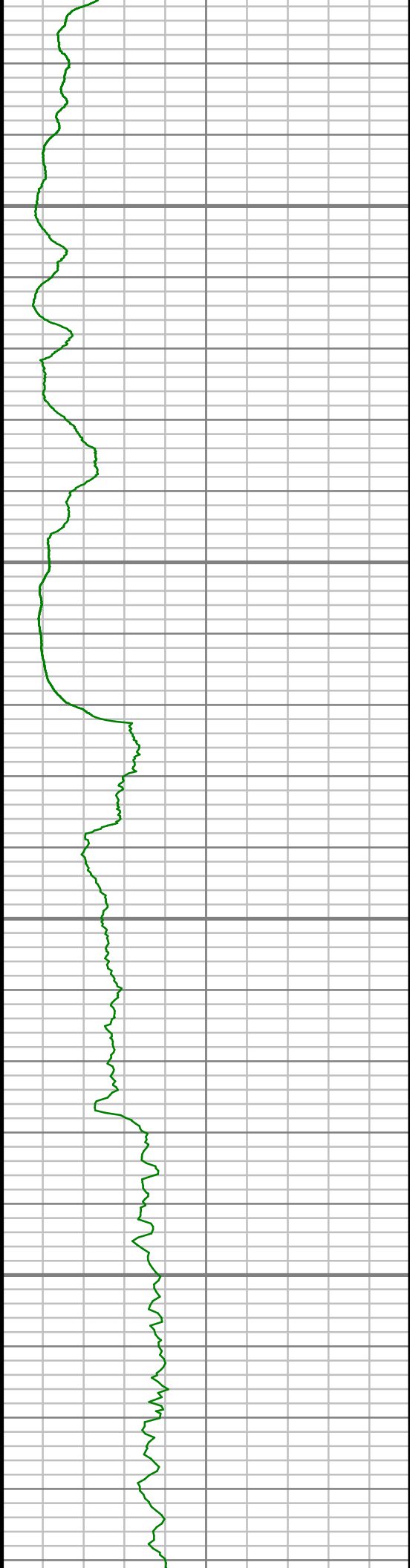
7300

7350



S: 43 MD: 7229.00 ft Inc: 56.94  
deg Az: 183.57 deg TVD:  
7066.55 ft

S: 44 MD: 7322.00 ft Inc: 68.38  
deg Az: 183.78 deg TVD:  
7109.19 ft

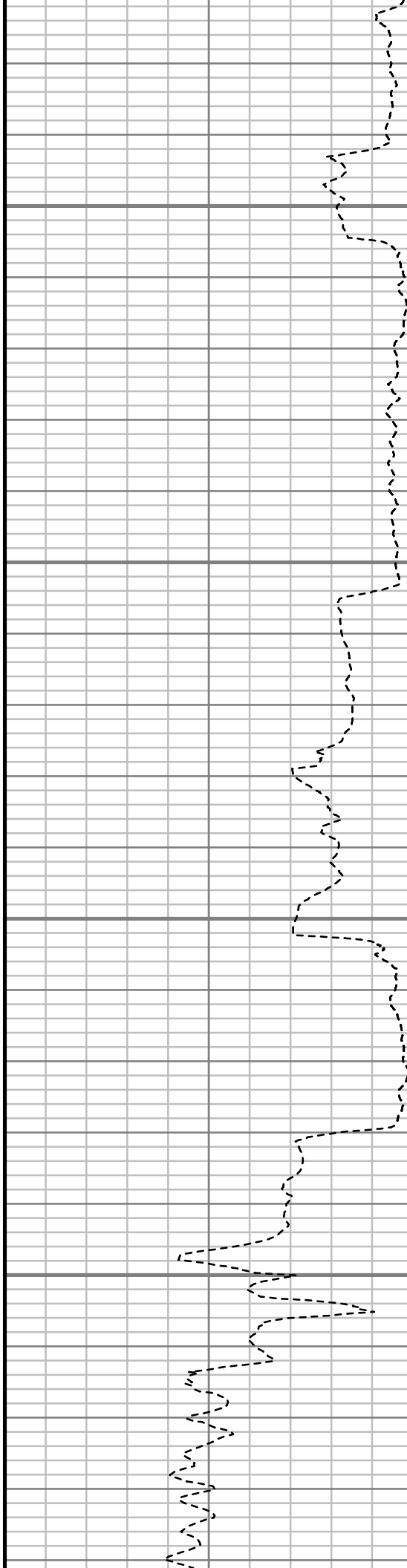


7400

7450

7500

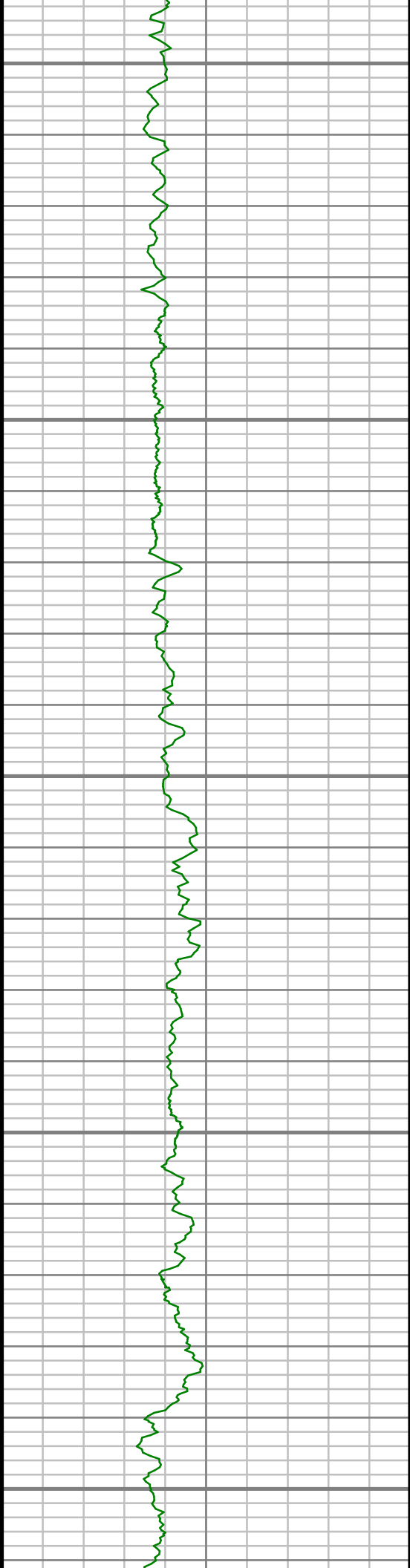
7550



S: 45 MD: 7415.00 ft Inc: 79.16  
deg Az: 182.81 deg TVD:  
7135.14 ft

S: 46 MD: 7480.00 ft Inc: 84.42  
deg Az: 182.46 deg TVD:  
7144.42 ft

S: 47 MD: 7536.00 ft Inc: 88.09  
deg Az: 182.57 deg TVD:  
7148.08 ft



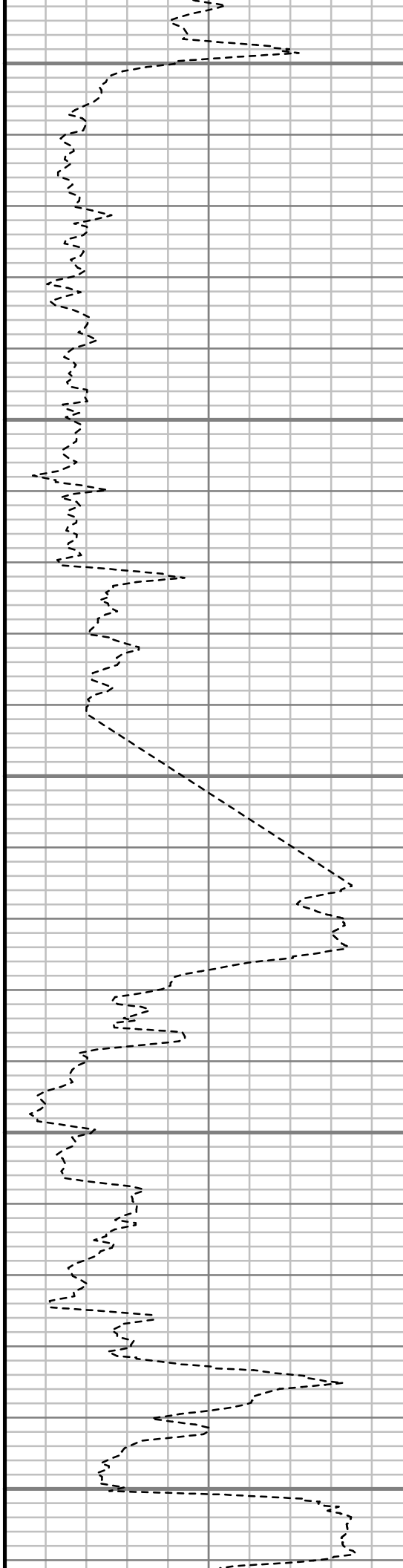
7600

7650

7700

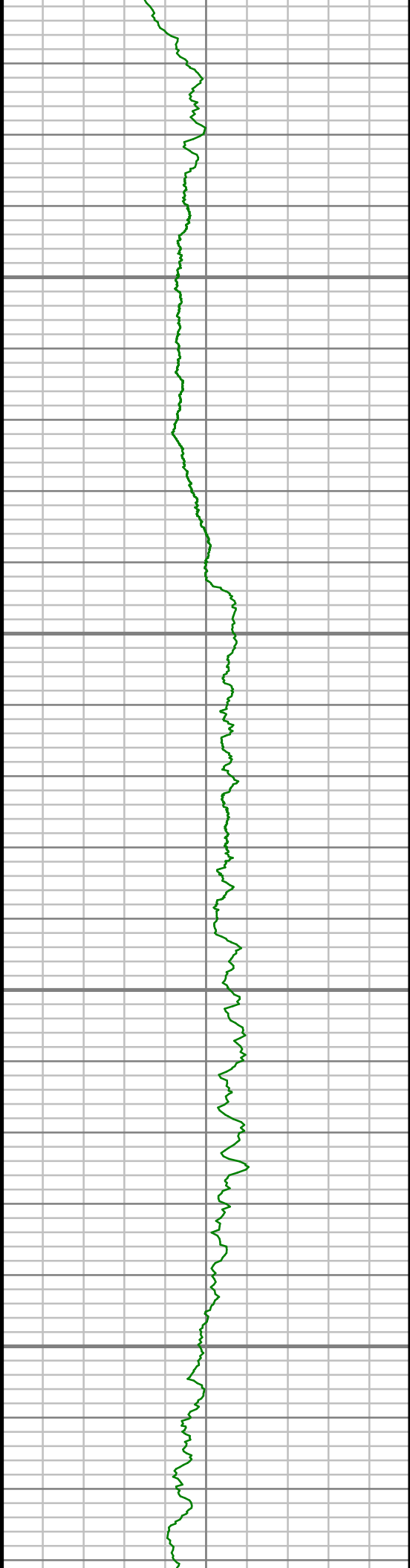
7750

7800



S: 48 MD: 7629.00 ft Inc: 88.52  
deg Az: 183.13 deg TVD:  
7150.83 ft

S: 49 MD: 7722.00 ft Inc: 88.79  
deg Az: 181.11 deg TVD:  
7153.01 ft

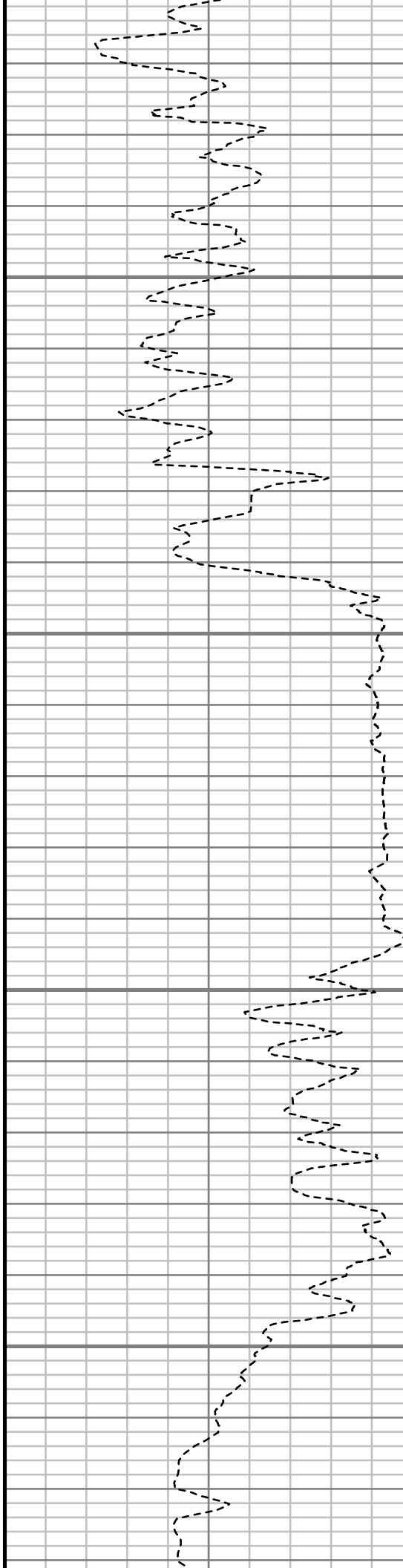


7850

7900

7950

8000

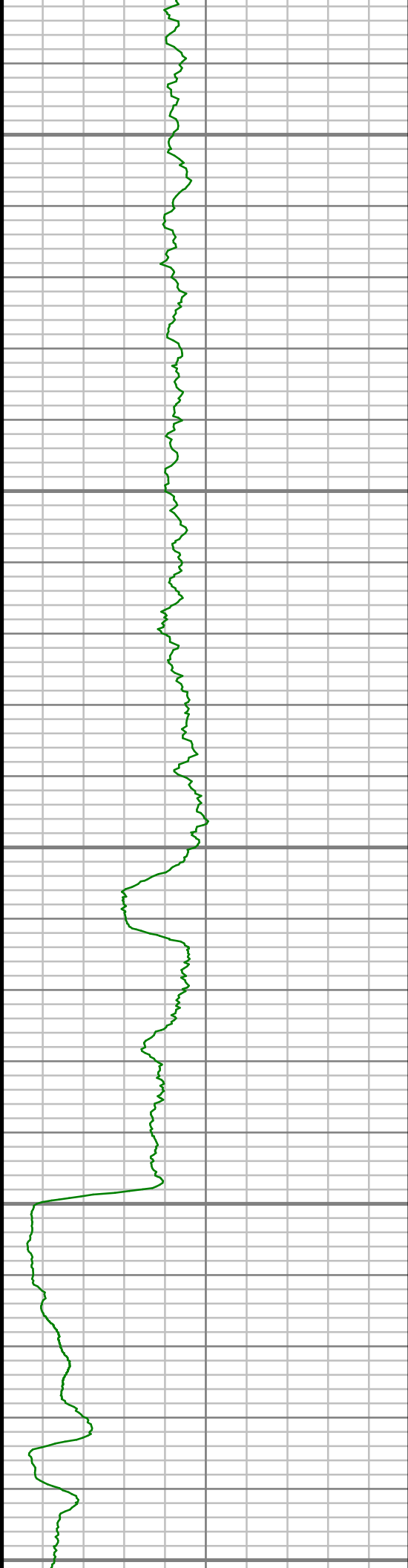


S: 50 MD: 7815.00 ft Inc: 89.87  
deg Az: 180.85 deg TVD:  
7154.10 ft

S: 51 MD: 7910.00 ft Inc: 90.10  
deg Az: 179.64 deg TVD:  
7154.13 ft

S: 52 MD: 8005.00 ft Inc: 91.41  
deg Az: 178.96 deg TVD:  
7152.88 ft





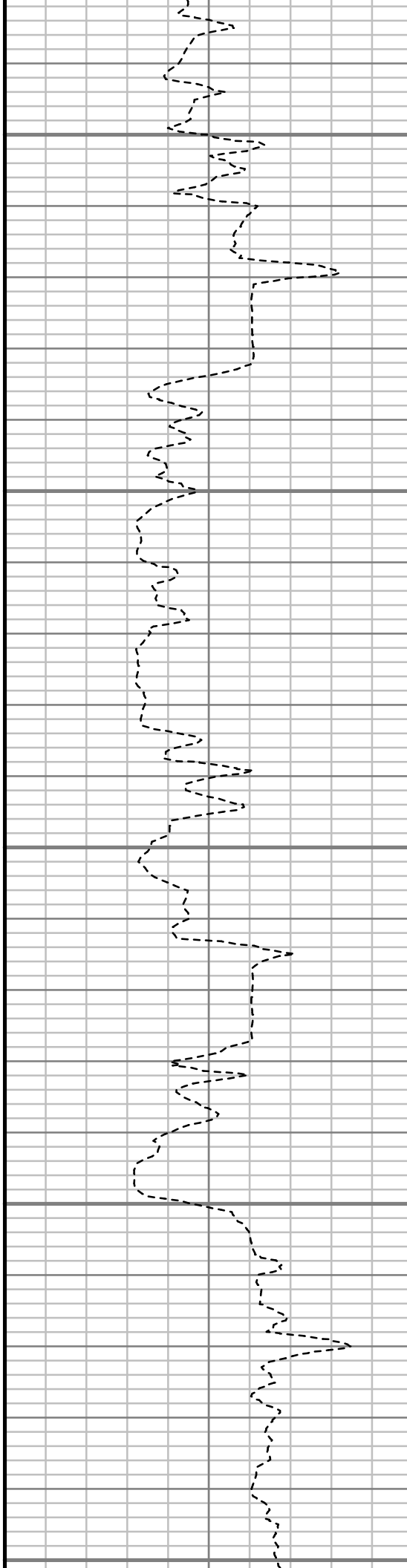
8050

8100

8150

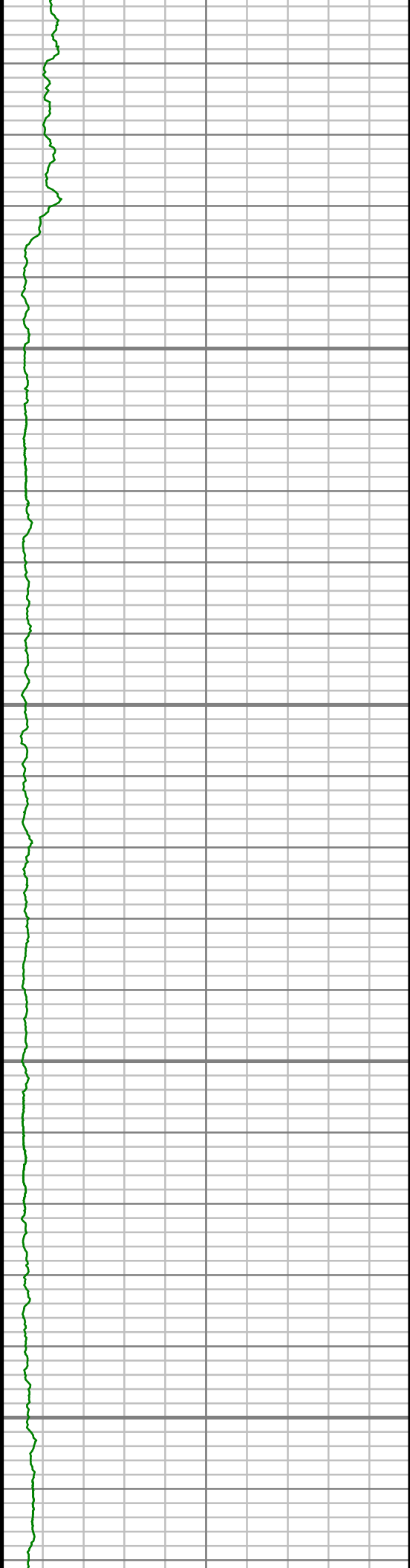
8200

8250



S: 53 MD: 8100.00 ft Inc: 91.01  
deg Az: 178.70 deg TVD:  
7150.87 ft

S: 54 MD: 8196.00 ft Inc: 90.47  
deg Az: 177.70 deg TVD:  
7149.64 ft

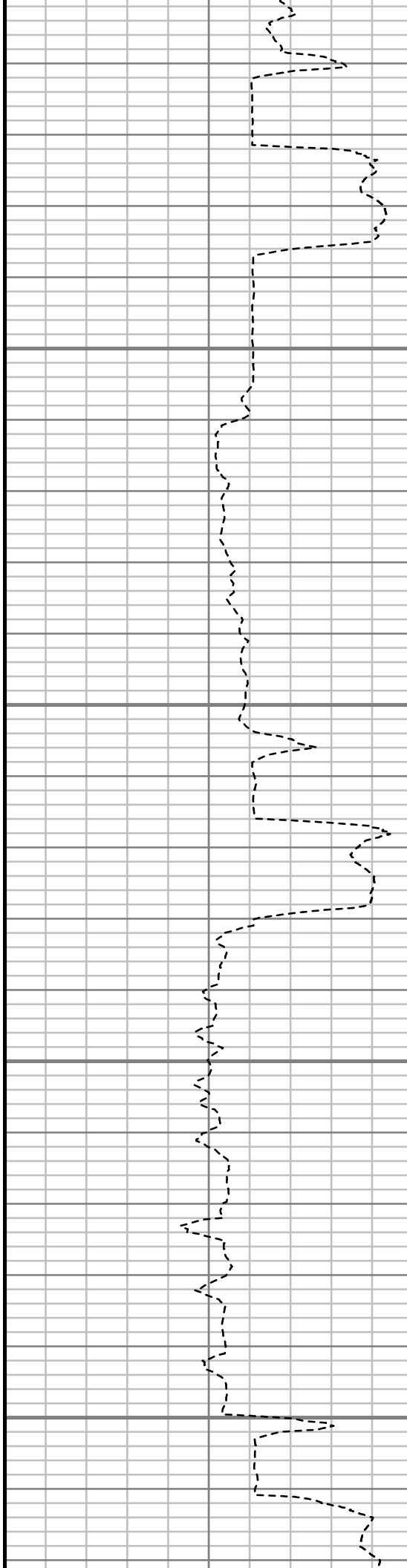


8300

8350

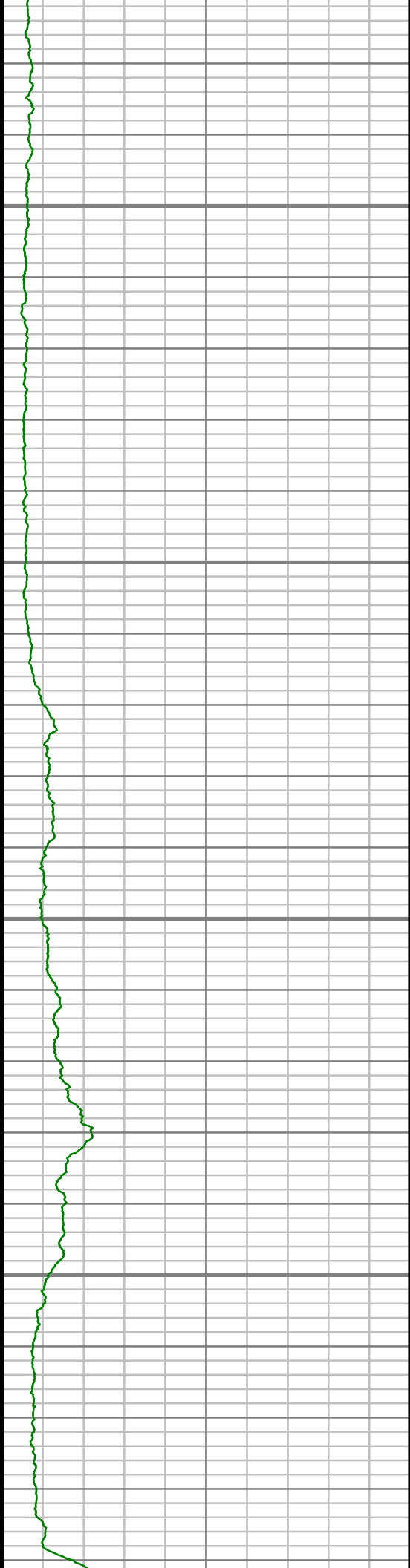
8400

8450



S: 55 MD: 8291.00 ft Inc: 91.54  
deg Az: 178.05 deg TVD:  
7147.97 ft

S: 56 MD: 8386.00 ft Inc: 91.91  
deg Az: 178.69 deg TVD:  
7145.11 ft

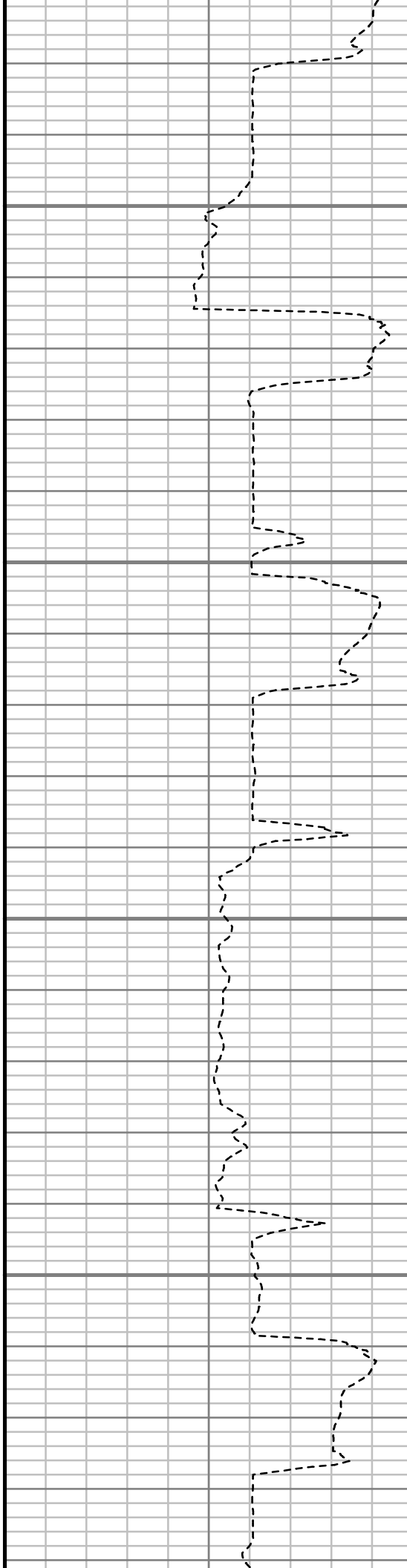


8500

8550

8600

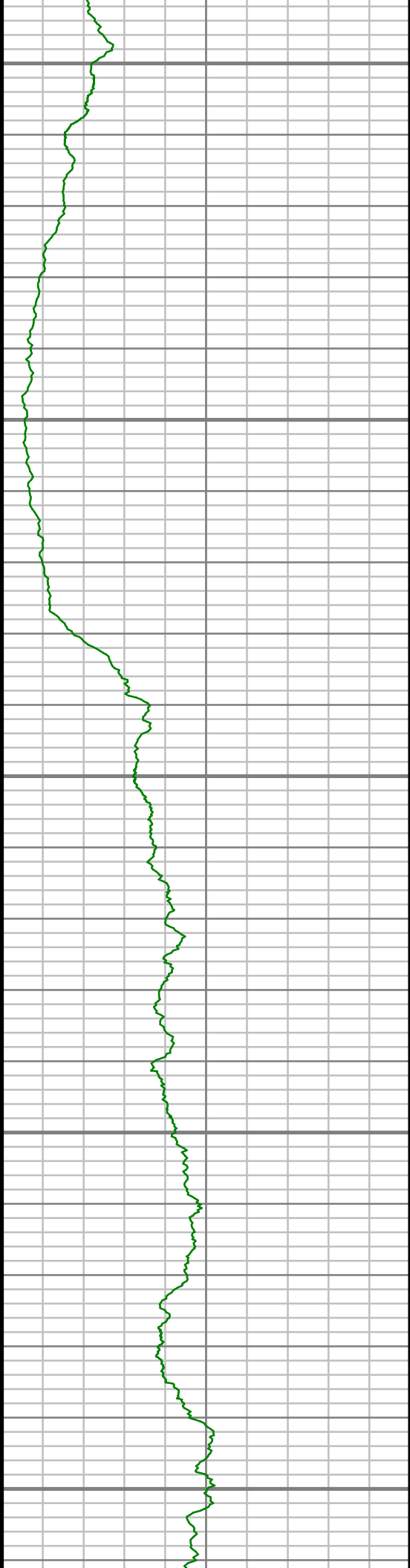
8650



S: 57 MD: 8482.00 ft Inc: 91.41  
deg Az: 178.90 deg TVD:  
7142.32 ft

S: 58 MD: 8577.00 ft Inc: 89.43  
deg Az: 179.51 deg TVD:  
7141.63 ft

S: 59 MD: 8672.00 ft Inc: 87.48  
deg Az: 179.04 deg TVD:  
7144.19 ft



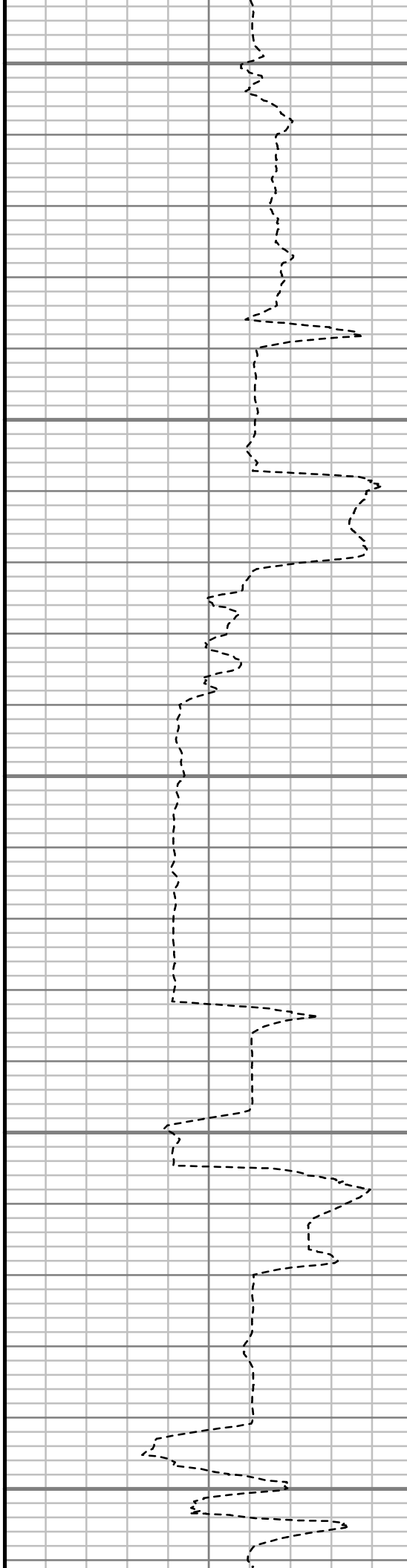
8700

8750

8800

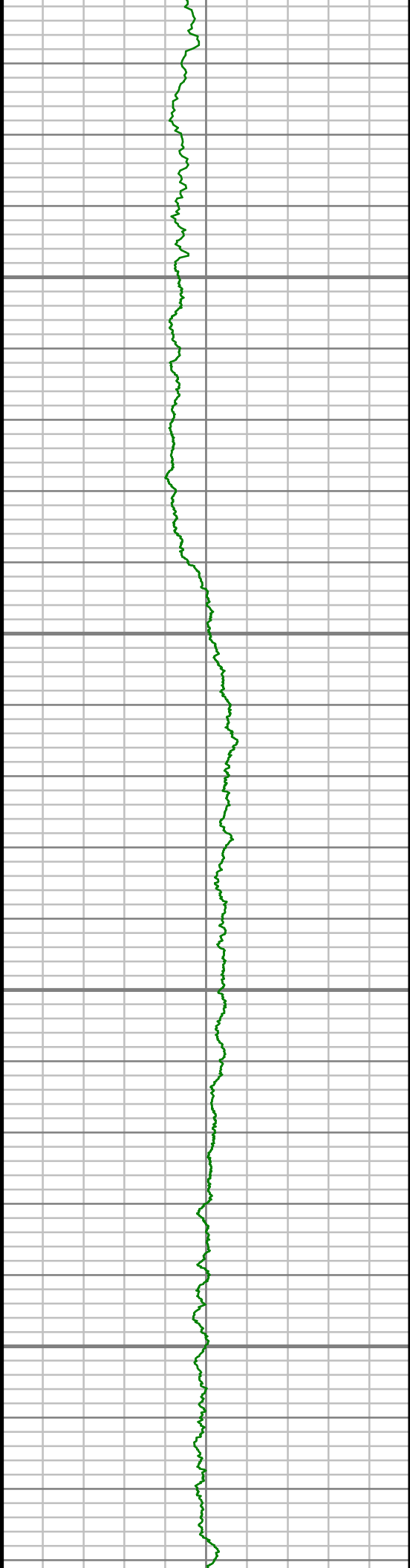
8850

8900



S: 60 MD: 8767.00 ft Inc: 88.19  
deg Az: 178.96 deg TVD:  
7147.77 ft

S: 61 MD: 8863.00 ft Inc: 88.12  
deg Az: 179.34 deg TVD:  
7150.86 ft

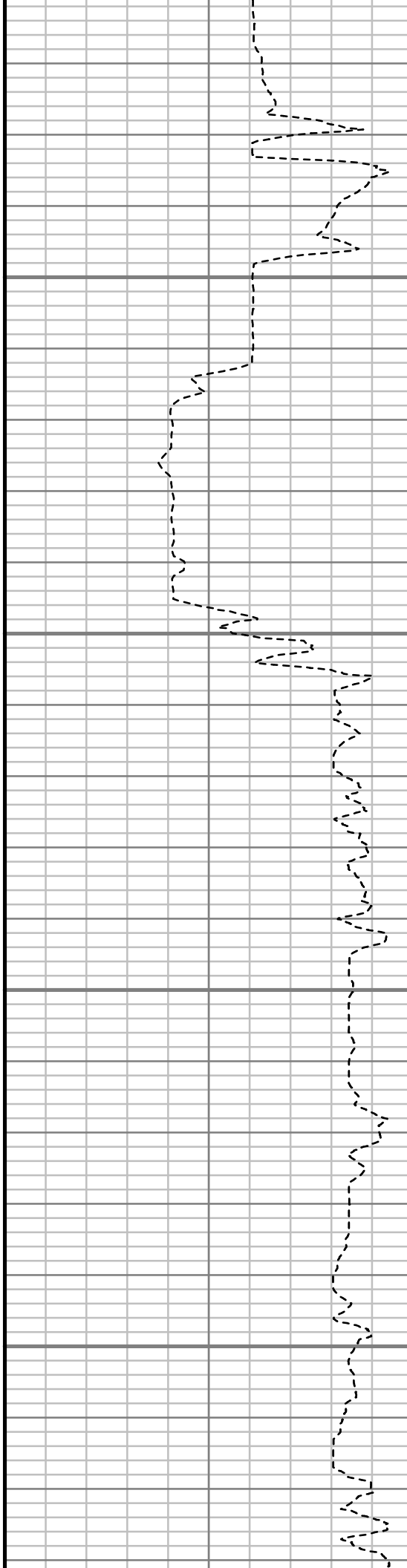


8950

9000

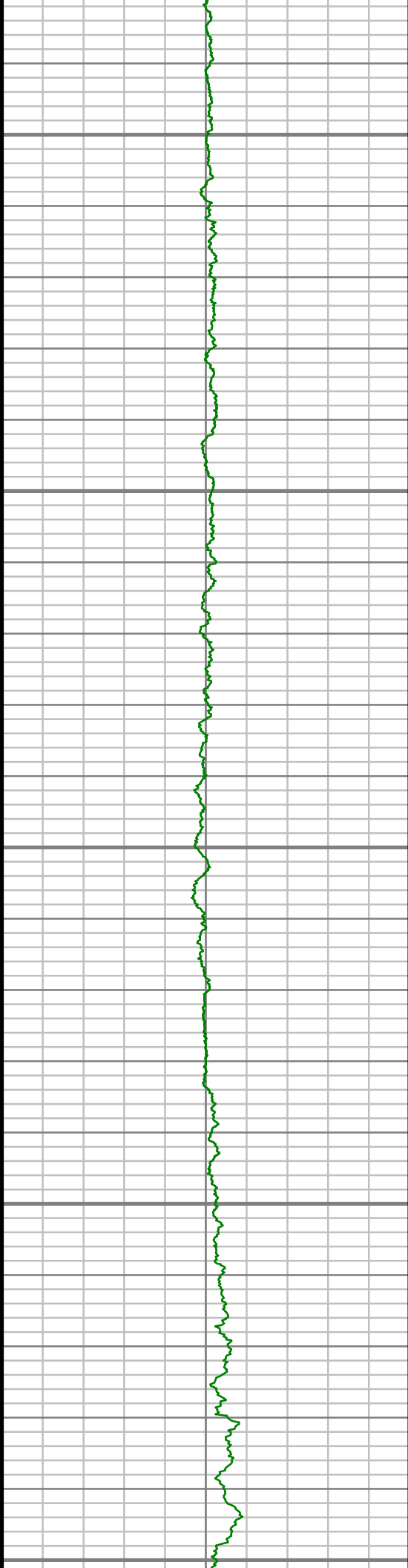
9050

9100



S: 62 MD: 8958.00 ft Inc: 88.99  
deg Az: 180.69 deg TVD:  
7153.25 ft

S: 63 MD: 9053.00 ft Inc: 88.76  
deg Az: 181.05 deg TVD:  
7155.11 ft



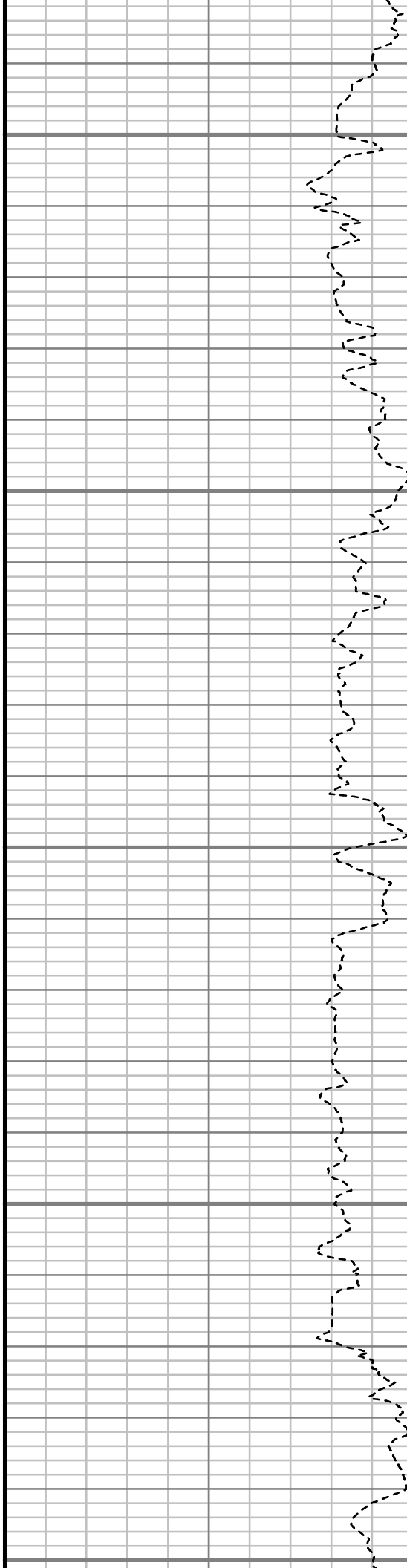
9150

9200

9250

9300

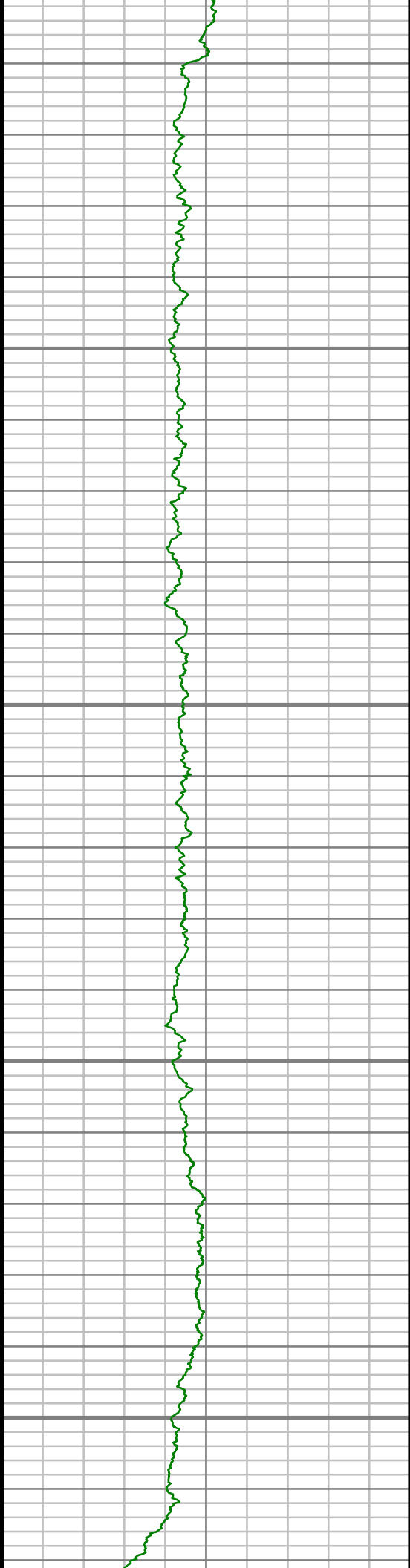
9350



S: 64 MD: 9149.00 ft Inc: 89.80  
deg Az: 180.38 deg TVD:  
7156.32 ft

S: 65 MD: 9244.00 ft Inc: 91.14  
deg Az: 180.18 deg TVD:  
7155.54 ft

S: 66 MD: 9339.00 ft Inc: 92.11  
deg Az: 180.27 deg TVD:  
7152.85 ft

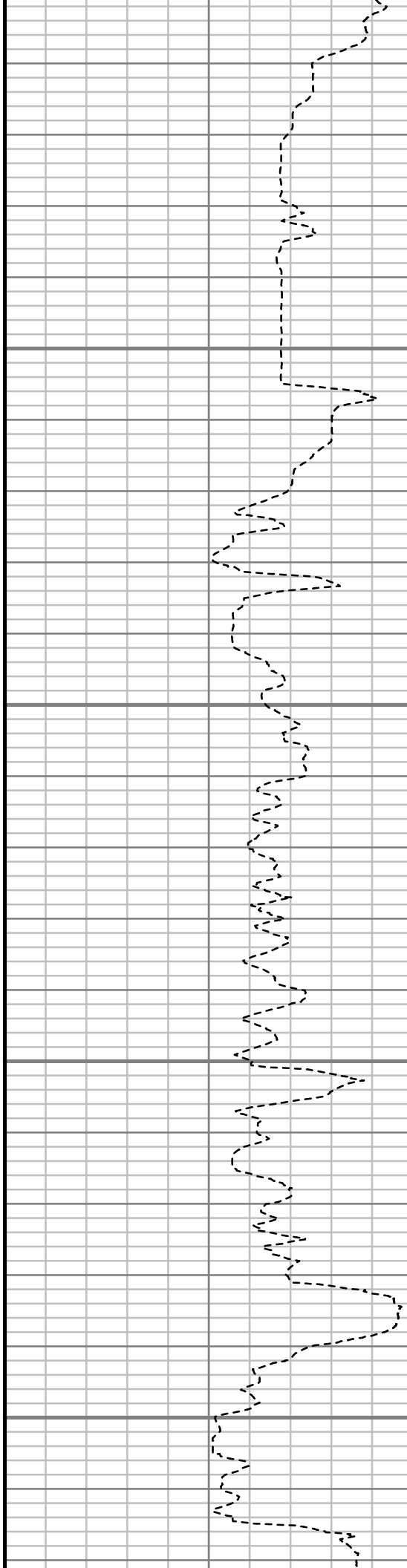


9400

9450

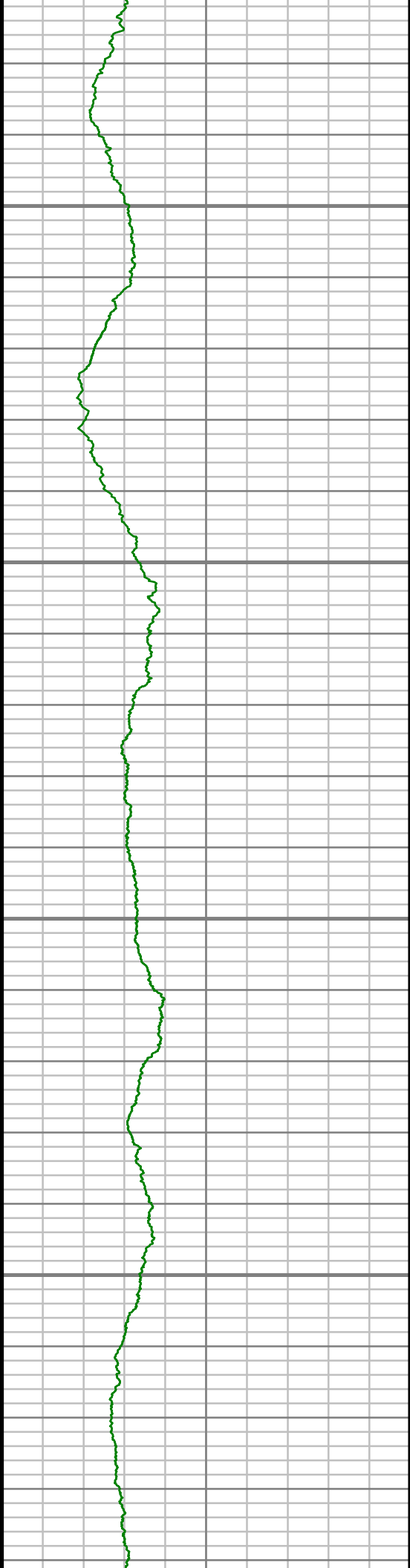
9500

9550



S: 67 MD: 9435.00 ft Inc: 92.21  
deg Az: 179.78 deg TVD:  
7149.23 ft

S: 68 MD: 9530.00 ft Inc: 91.27  
deg Az: 180.72 deg TVD:  
7146.34 ft

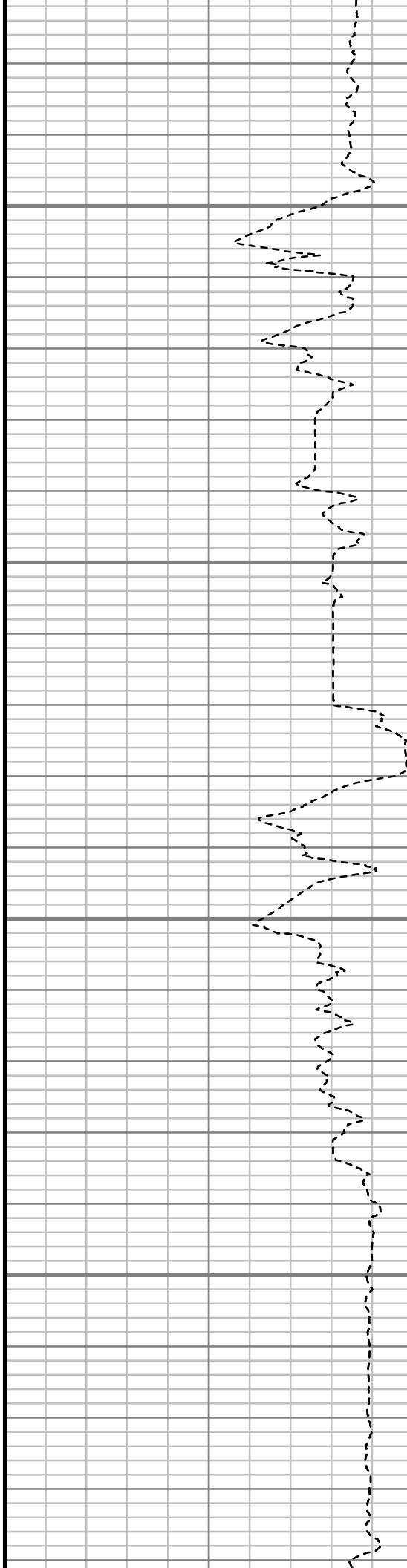


9600

9650

9700

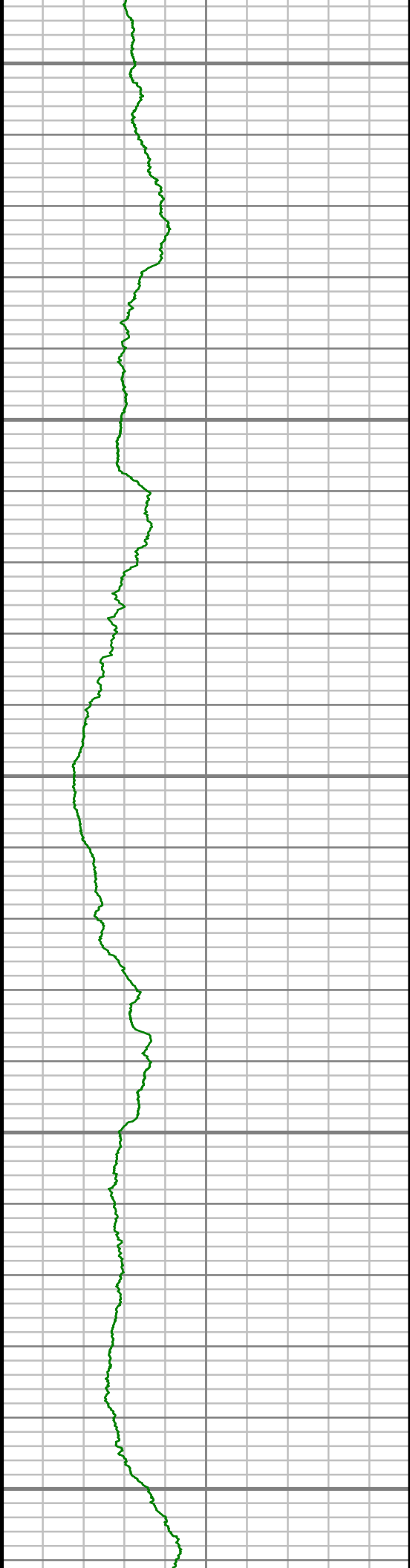
9750



S: 69 MD: 9625.00 ft Inc: 91.24  
deg Az: 179.37 deg TVD:  
7144.25 ft

S: 70 MD: 9720.00 ft Inc: 89.70  
deg Az: 178.87 deg TVD:  
7143.47 ft





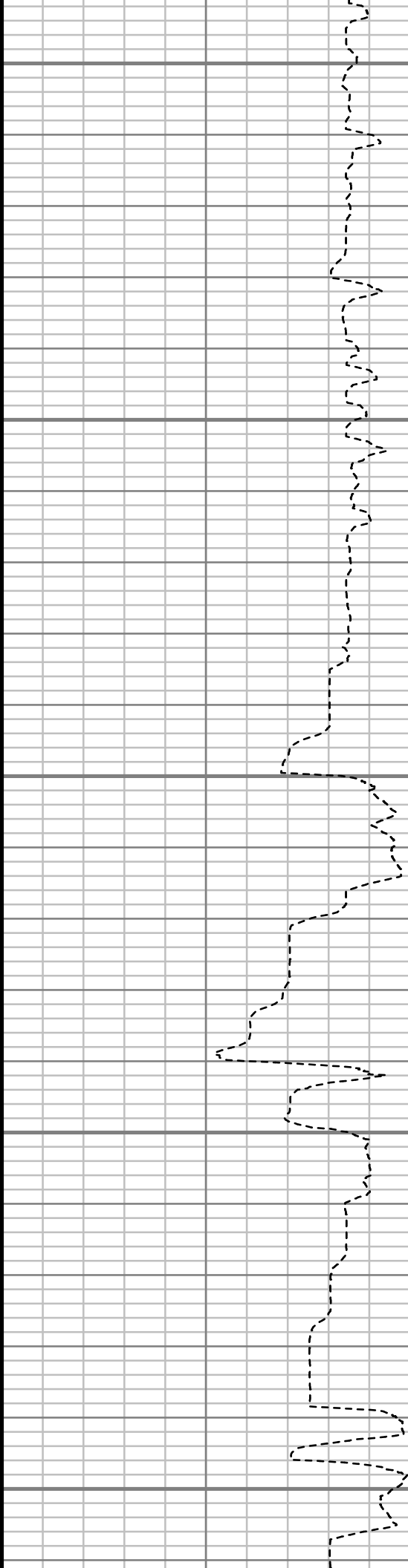
9800

9850

9900

9950

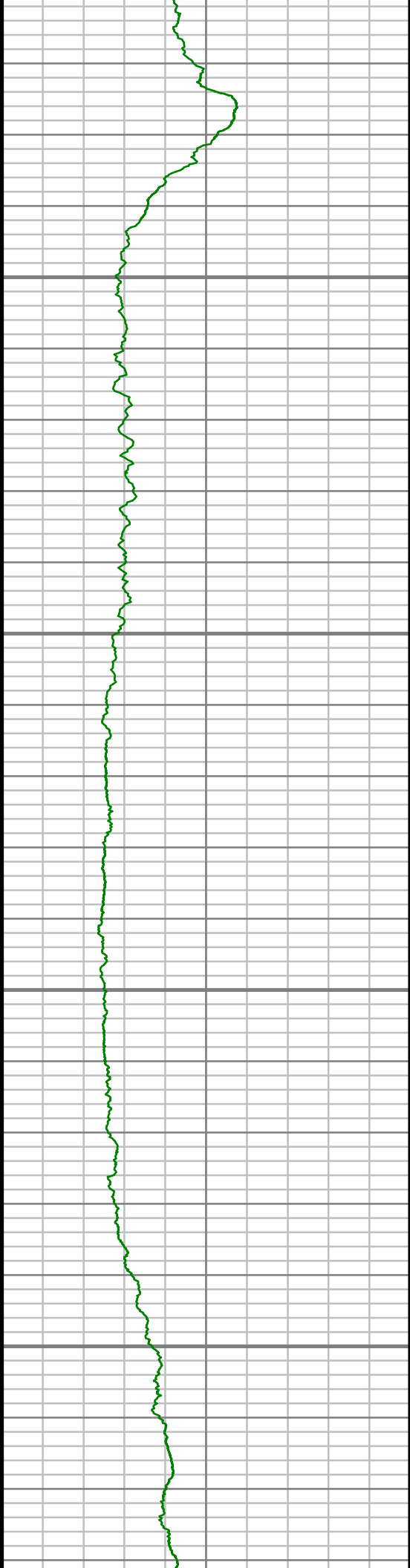
10000



S: 71 MD: 9815.00 ft Inc: 90.57  
deg Az: 177.94 deg TVD:  
7143.25 ft

S: 72 MD: 9910.00 ft Inc: 90.67  
deg Az: 178.60 deg TVD:  
7142.22 ft

S: 73 MD: 10006.00 ft Inc:  
90.54 deg Az: 178.20 deg TVD:



10050

10100

10150

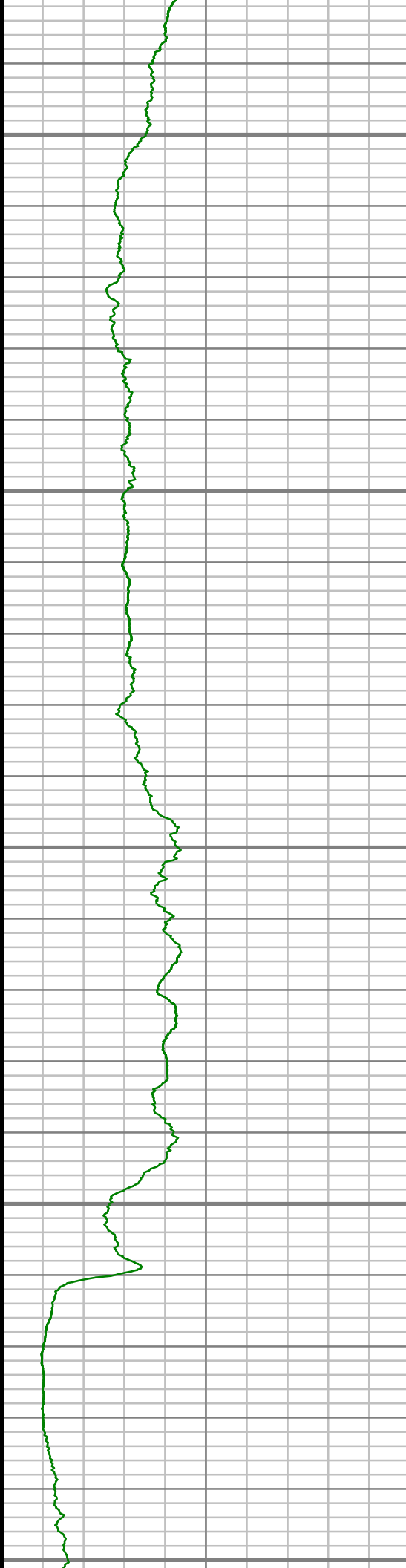
10200



7141.21 ft

S: 74 MD: 10101.00 ft Inc:  
91.21 deg Az: 178.83 deg TVD:  
7139.77 ft

S: 75 MD: 10196.00 ft Inc:  
90.00 deg Az: 178.52 deg TVD:  
7138.77 ft



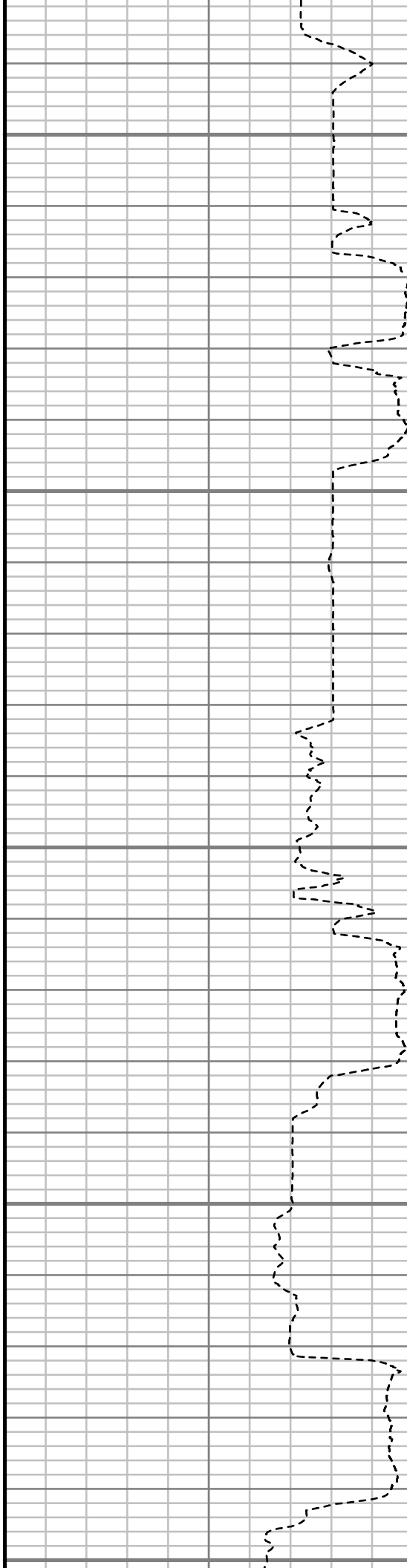
10250

10300

10350

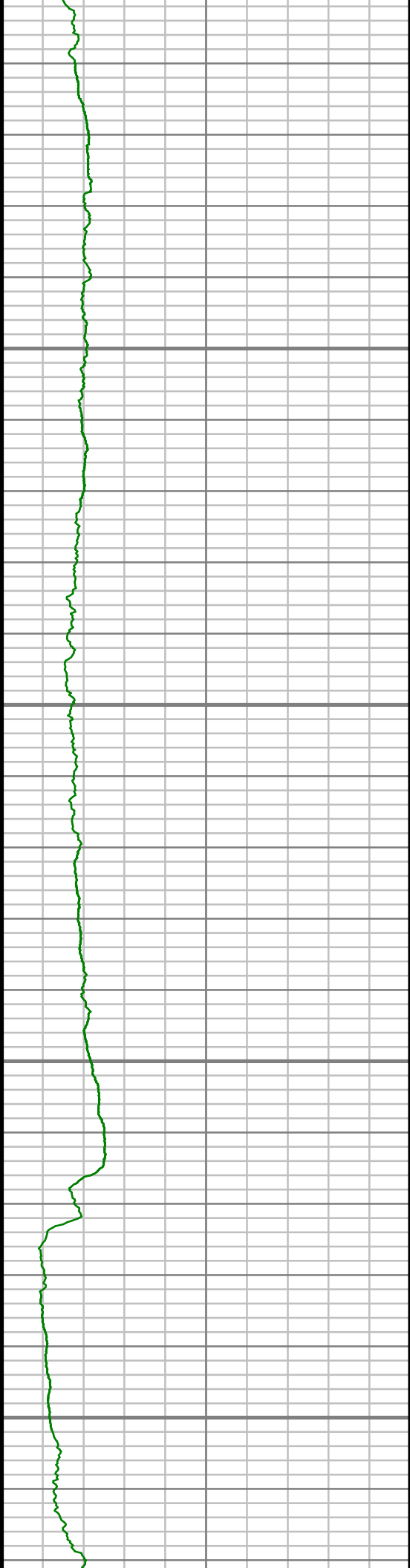
10400

10450



S: 76 MD: 10292.00 ft Inc:  
91.75 deg Az: 181.20 deg TVD:  
7137.30 ft

S: 77 MD: 10387.00 ft Inc:  
93.29 deg Az: 182.14 deg TVD:  
7133.13 ft

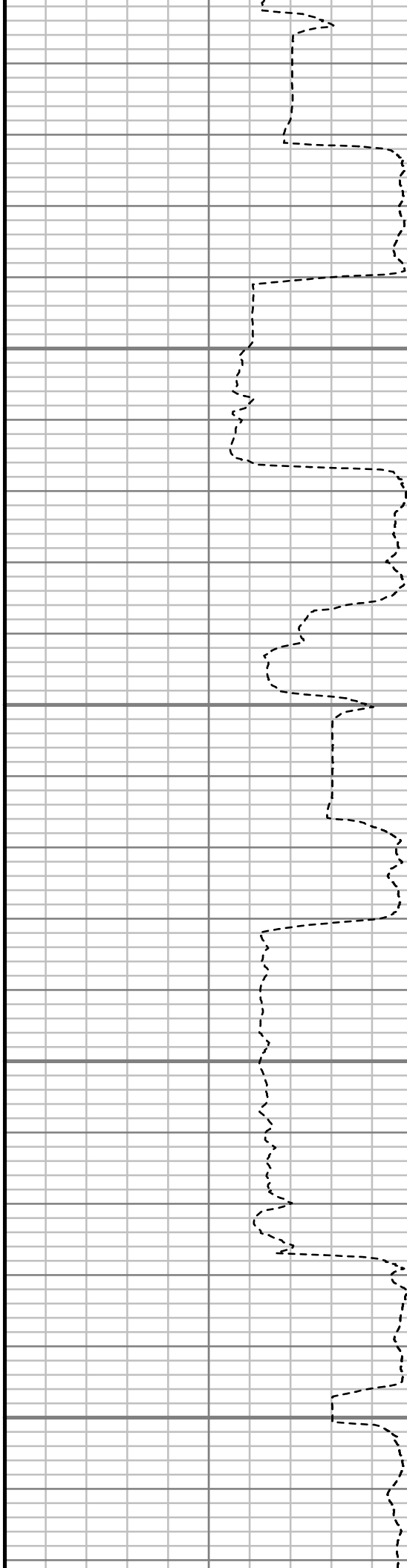


10500

10550

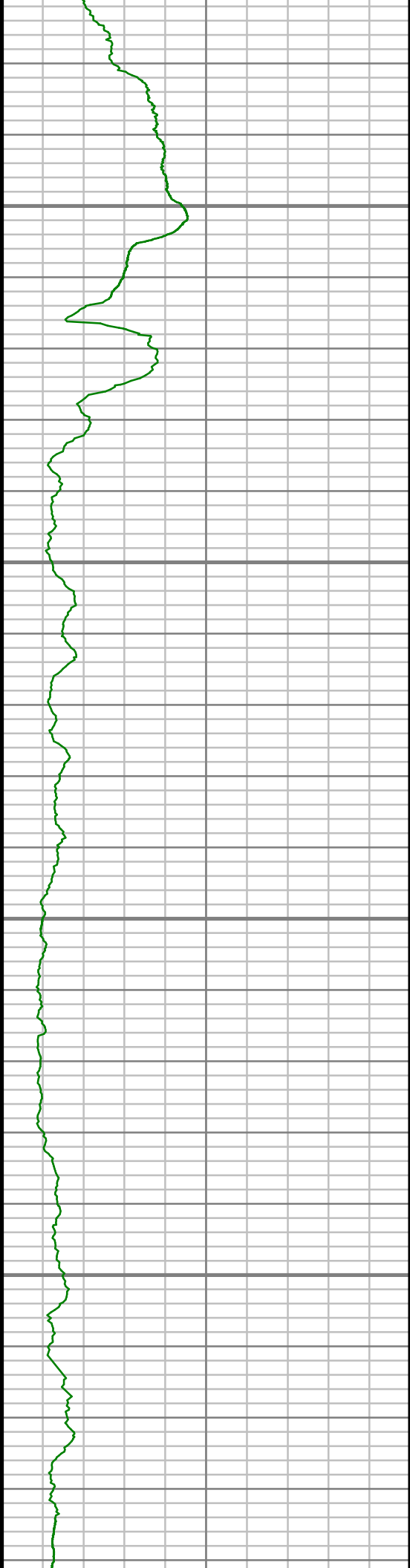
10600

10650



S: 78 MD: 10483.00 ft Inc:  
91.54 deg Az: 180.97 deg TVD:  
7129.08 ft

S: 79 MD: 10578.00 ft Inc:  
91.88 deg Az: 183.09 deg TVD:  
7126.24 ft

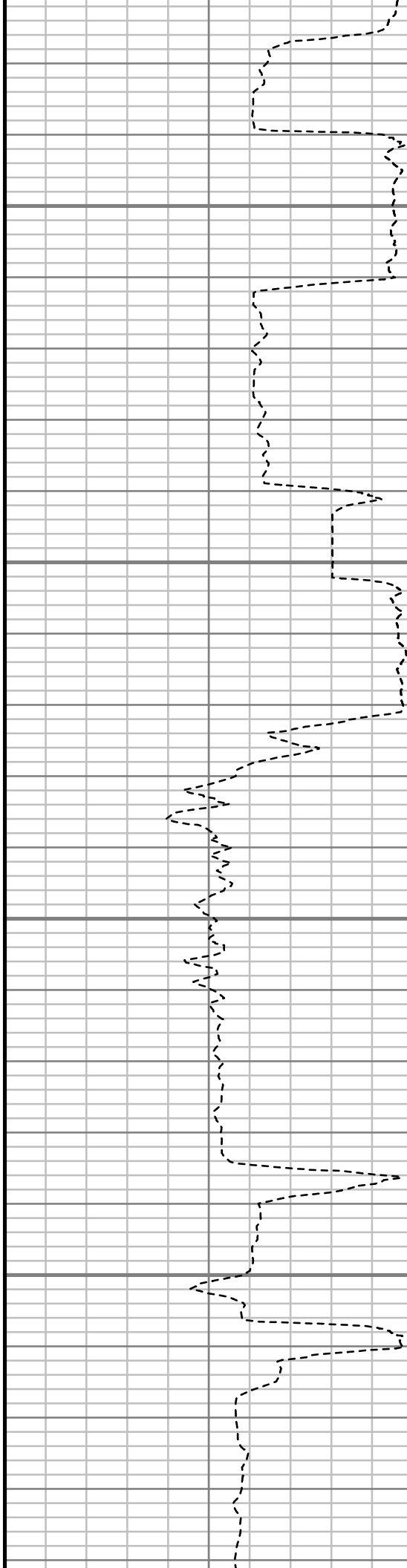


10700

10750

10800

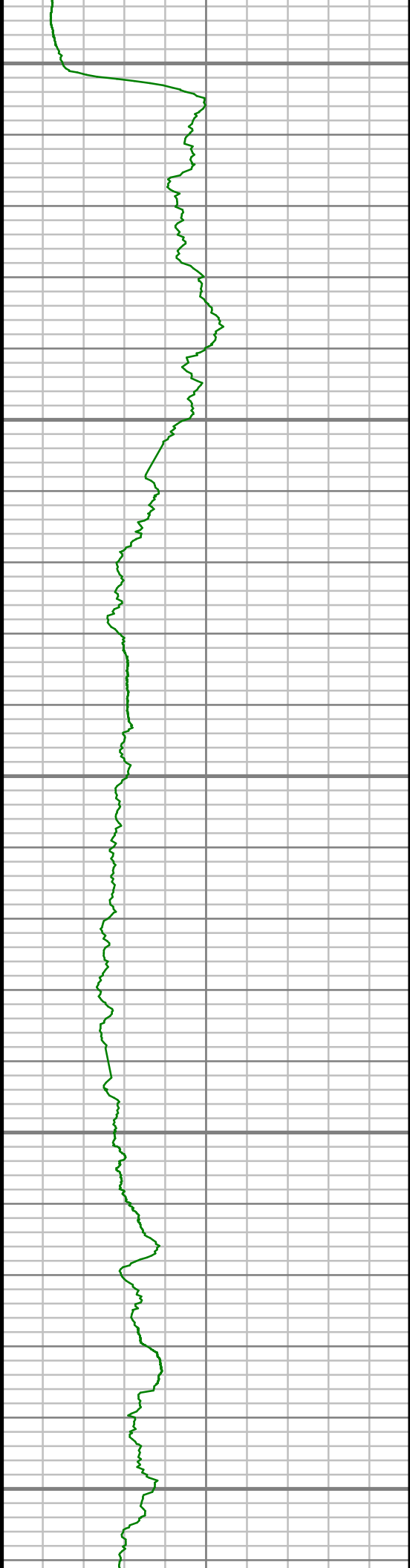
10850



S: 80 MD: 10673.00 ft Inc:  
87.24 deg Az: 182.97 deg TVD:  
7126.97 ft

S: 81 MD: 10769.00 ft Inc:  
87.75 deg Az: 183.04 deg TVD:  
7131.16 ft

S: 82 MD: 10864.00 ft Inc:  
89.13 deg Az: 183.27 deg TVD:  
7133.75 ft



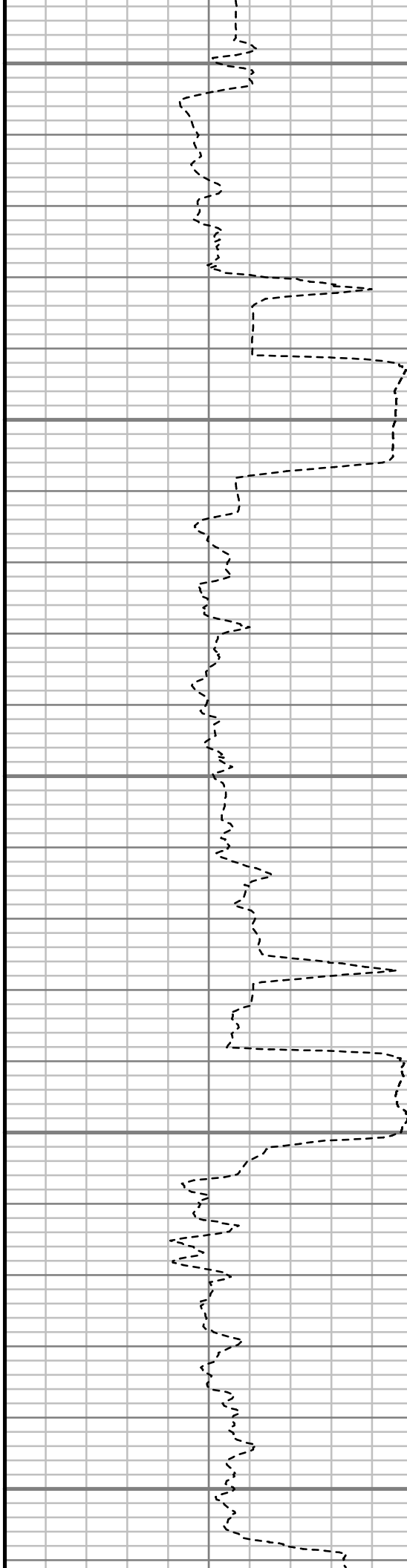
10900

10950

11000

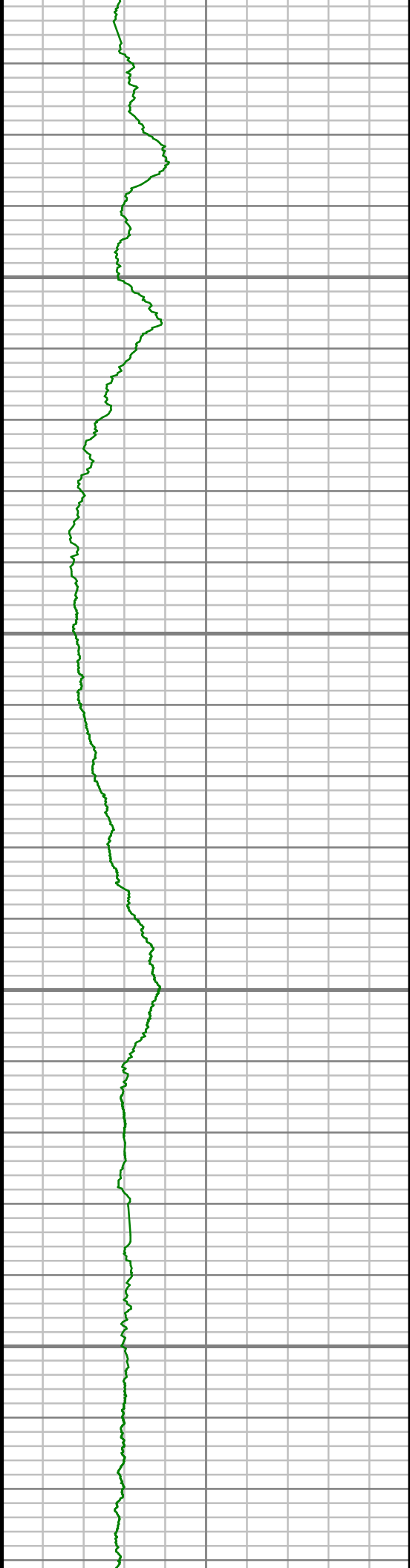
11050

11100



S: 83 MD: 10959.00 ft Inc:  
88.79 deg Az: 182.87 deg TVD:  
7135.48 ft

S: 84 MD: 11054.00 ft Inc:  
88.83 deg Az: 181.77 deg TVD:  
7137.45 ft

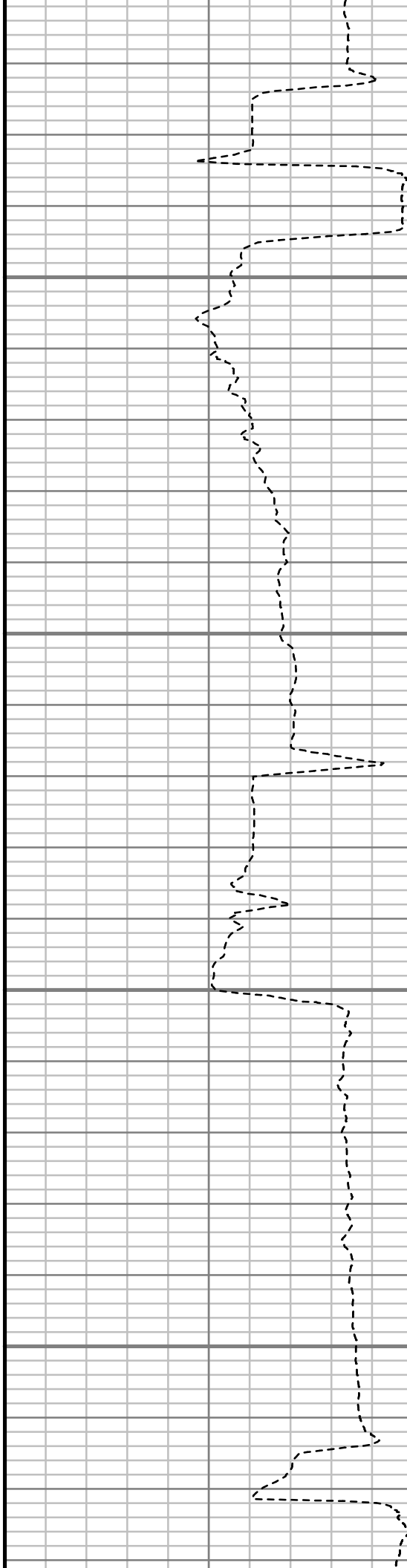


11150

11200

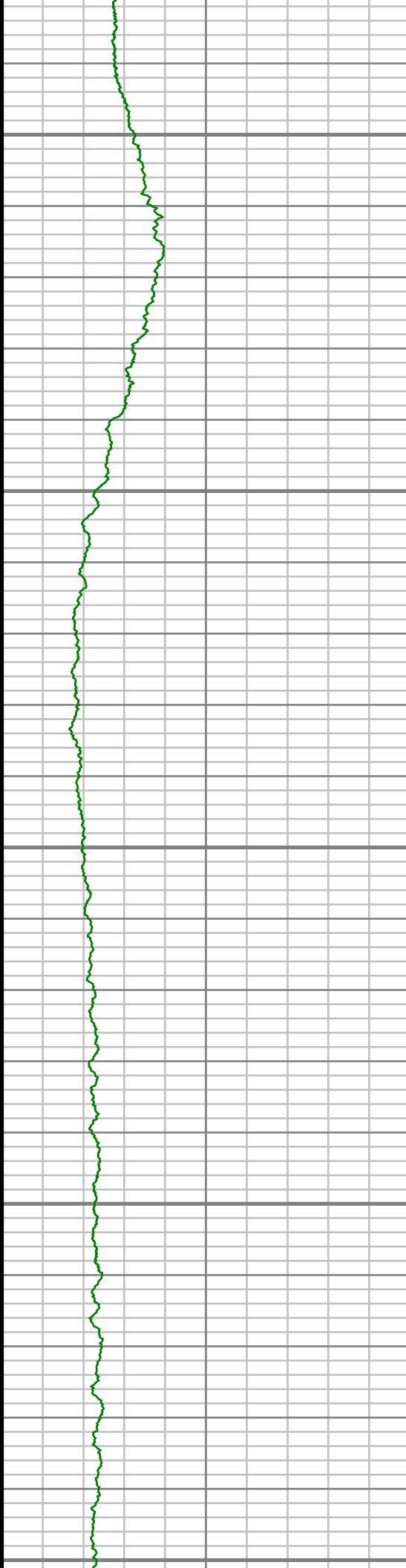
11250

11300



S: 85 MD: 11150.00 ft Inc:  
89.29 deg Az: 180.55 deg TVD:  
7139.03 ft

S: 86 MD: 11245.00 ft Inc:  
90.07 deg Az: 180.29 deg TVD:  
7139.56 ft



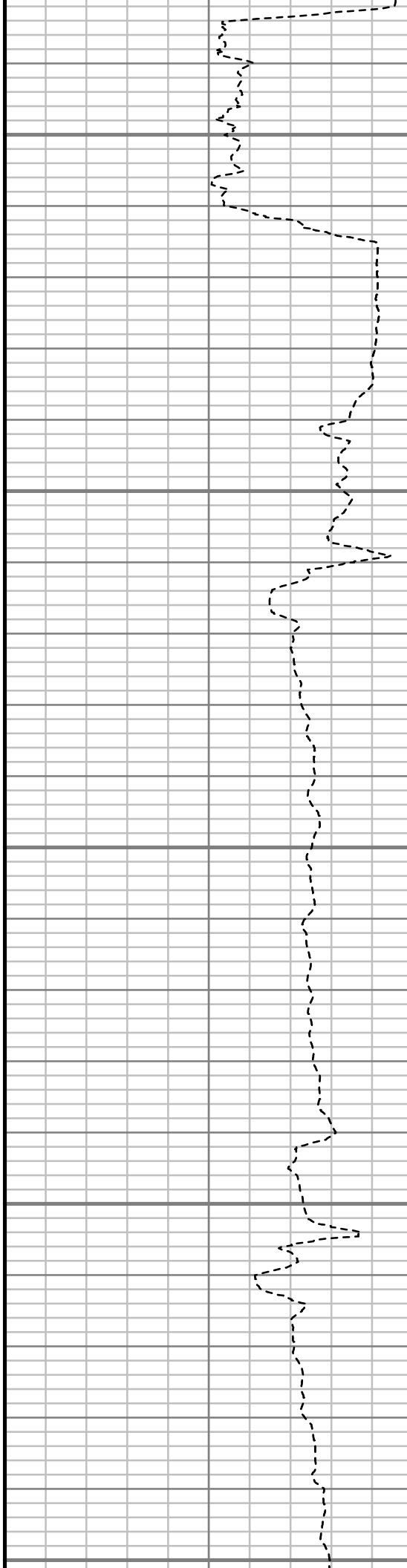
11350

11400

11450

11500

11550

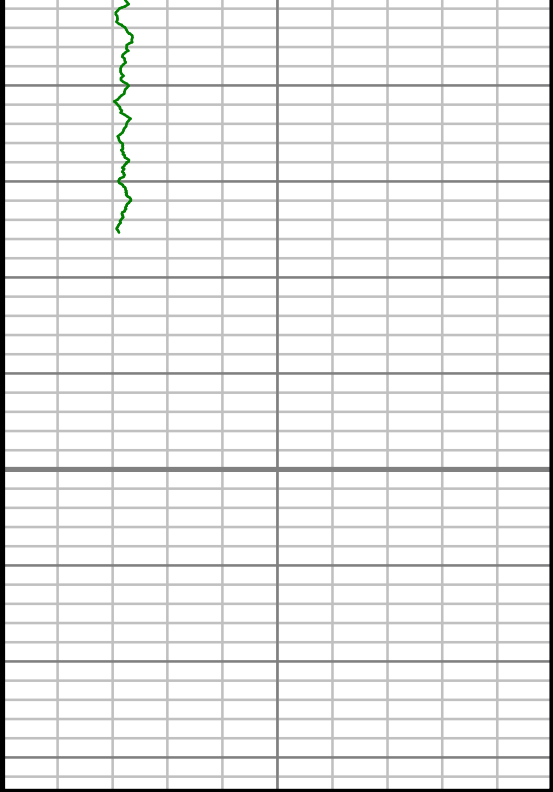


S: 87 MD: 11340.00 ft Inc:  
89.43 deg Az: 179.08 deg TVD:  
7139.97 ft

S: 88 MD: 11435.00 ft Inc:  
90.10 deg Az: 179.16 deg TVD:  
7140.36 ft

S: 89 MD: 11530.00 ft Inc:  
90.67 deg Az: 178.35 deg TVD:  
7139.72 ft

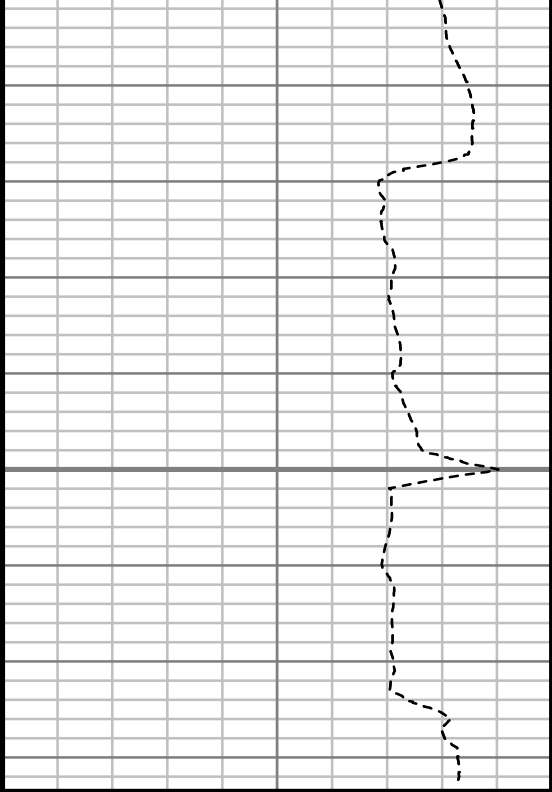




Gamma Ray (GR)		
0	Unit = aapi	150

11600

MEASURED DEPTH  
1,240 (ft)



Rate of Penetration (ROP)		
500	Unit = ft/hr	0

S: 90 MD: 11568.00 ft Inc:  
91.18 deg Az: 178.14 deg TVD:  
7139.11 ft

Comments



## MWD Survey Report

Well Location	NEWNAM
Well Name	NEWNAM 2F-32H-C264
Survey Date	12/7/2014
Latitude	40°6'5.281"N
Longitude	104°34'42.708"W
Btotal	52513 nT
Dip	66.71 deg
Magnetic Declination	8.37 deg
North Reference	True North
Grid Correction	None
Depth Reference	RKB (13.00 ft)
Calculation Method	Minimum Curvature
Section (VS) Ref	0.00N (ft), 0.00E (ft), 180.00Azim (deg)
Operator(s)	J. SMITH, M. SMITH, T. MORGAN, T. WHEELER

### Well Notes

MD	Inc	Azim	TVD	VS	+N/-S	+E/-W	Closure Direction	Closure Distance	DLS
ft	deg	deg	ft	ft	ft	ft	deg	ft	"/100ft
0.00	0.00	0.00	0.00	0.00	0.00	0.00	0.00	0.00	Invalid
146.00	0.27	321.91	146.00	-0.27	0.27	-0.21	321.91	0.34	0.19
609.00	7.70	326.10	607.55	-26.93	26.93	-18.22	325.91	32.51	1.61
702.00	9.93	322.69	699.45	-38.48	38.48	-26.56	325.39	46.76	2.46
888.00	9.89	302.94	882.73	-59.93	59.93	-49.69	320.34	77.85	1.82
976.00	9.12	296.85	969.52	-67.19	67.19	-62.26	317.18	91.60	1.44
1085.00	7.62	293.54	1077.36	-73.98	73.98	-76.59	314.01	106.48	1.45
1271.00	11.14	288.56	1260.85	-84.62	84.62	-104.93	308.88	134.80	1.94
1457.00	10.99	286.89	1443.39	-95.49	95.49	-138.94	304.50	168.59	0.19
1647.00	12.04	295.34	1629.57	-109.24	109.24	-174.19	302.09	205.61	1.04
1838.00	12.00	292.05	1816.39	-125.22	125.22	-210.61	300.74	245.02	0.36
2028.00	11.82	290.62	2002.30	-139.49	139.49	-247.13	299.44	283.78	0.18
2219.00	10.80	287.42	2189.59	-151.74	151.74	-282.50	298.24	320.68	0.63
2409.00	10.27	294.26	2376.39	-164.03	164.03	-314.92	297.51	355.08	0.71
2600.00	8.41	293.16	2564.85	-176.52	176.52	-343.29	297.21	386.01	0.98
2791.00	8.80	305.79	2753.72	-190.55	190.55	-367.98	297.38	414.39	1.01
2981.00	10.36	306.61	2941.07	-209.24	209.24	-393.48	298.00	445.65	0.82
3172.00	8.68	306.20	3129.43	-227.99	227.99	-418.89	298.56	476.92	0.88
3362.00	7.12	305.57	3317.62	-243.31	243.31	-440.04	298.94	502.83	0.83

MD	Inc	Azim	TVD	VS	+N/-S	+E/-W	Closure Direction	Closure Distance	DLS
ft	deg	deg	ft	ft	ft	ft	deg	ft	°/100ft
3552.00	7.53	303.64	3506.07	-257.05	257.05	-459.98	299.20	526.93	0.25
3742.00	5.65	279.31	3694.84	-265.47	265.47	-479.57	298.97	548.14	1.75
3933.00	3.40	268.62	3885.24	-266.85	266.85	-494.50	298.35	561.91	1.25
4124.00	1.15	211.30	4076.10	-265.08	265.08	-501.15	297.88	566.94	1.54
4314.00	1.01	214.35	4266.06	-262.07	262.07	-503.09	297.52	567.25	0.08
4505.00	0.28	83.03	4457.05	-260.74	260.74	-503.58	297.37	567.08	0.63
4695.00	0.48	14.19	4647.05	-261.57	261.57	-502.93	297.48	566.88	0.24
4886.00	1.37	10.32	4838.02	-264.59	264.59	-502.32	297.78	567.74	0.47
5076.00	0.44	14.54	5028.00	-267.53	267.53	-501.73	298.07	568.60	0.49
5266.00	0.85	189.04	5217.99	-266.84	266.84	-501.77	298.00	568.31	0.68
5457.00	1.50	204.74	5408.95	-263.16	263.16	-503.04	297.62	567.72	0.38
5646.00	0.62	187.44	5597.92	-259.90	259.90	-504.21	297.27	567.25	0.49
5837.00	1.10	185.67	5788.89	-257.05	257.05	-504.53	297.00	566.23	0.25
6022.00	1.64	158.12	5973.84	-252.82	252.82	-503.72	296.65	563.60	0.45
6208.00	1.02	150.87	6159.79	-248.90	248.90	-501.92	296.38	560.24	0.34
6394.00	0.86	96.91	6345.77	-247.28	247.28	-499.72	296.33	557.56	0.47
6486.00	2.22	137.66	6437.74	-245.88	245.88	-497.84	296.28	555.25	1.81
6579.00	7.61	170.46	6530.37	-238.47	238.47	-495.60	295.70	549.99	6.30

MD	Inc	Azim	TVD	VS	+N/-S	+E/-W	Closure Direction	Closure Distance	DLS
ft	deg	deg	ft	ft	ft	ft	deg	ft	°/100ft
6672.00	13.80	175.24	6621.71	-221.34	221.34	-493.66	294.15	541.01	6.72
6765.00	25.38	179.66	6709.19	-190.25	190.25	-492.62	291.12	528.08	12.55
6858.00	31.30	178.32	6791.00	-146.13	146.13	-491.79	286.55	513.04	6.40
6951.00	35.47	180.13	6868.64	-94.98	94.98	-491.14	280.94	500.24	4.61
7044.00	38.65	179.27	6942.85	-38.94	38.94	-490.84	274.54	492.38	3.47
7137.00	47.90	180.17	7010.49	24.74	-24.74	-490.57	267.11	491.19	9.96
7229.00	56.94	183.57	7066.55	97.51	-97.51	-493.08	258.81	502.63	10.25
7322.00	68.38	183.78	7109.19	179.82	-179.82	-498.37	250.16	529.82	12.30
7415.00	79.16	182.81	7135.14	268.83	-268.83	-503.47	241.90	570.75	11.63
7480.00	84.42	182.46	7144.42	333.08	-333.08	-506.42	236.67	606.14	8.11
7536.00	88.09	182.57	7148.08	388.89	-388.89	-508.88	232.61	640.46	6.56
7629.00	88.52	183.13	7150.83	481.74	-481.74	-513.50	226.83	704.10	0.76
7722.00	88.79	181.11	7153.01	574.64	-574.64	-516.94	221.97	772.94	2.19
7815.00	89.87	180.85	7154.10	667.62	-667.62	-518.53	217.84	845.33	1.19
7910.00	90.10	179.64	7154.13	762.62	-762.62	-518.93	214.23	922.43	1.30
8005.00	91.41	178.96	7152.88	857.60	-857.60	-517.76	211.12	1001.78	1.55
8100.00	91.01	178.70	7150.87	952.56	-952.56	-515.82	208.44	1083.25	0.50
8196.00	90.47	177.70	7149.64	1048.50	-1048.50	-512.81	206.06	1167.19	1.18

MD	Inc	Azim	TVD	VS	+N/-S	+E/-W	Closure Direction	Closure Distance	DLS
ft	deg	deg	ft	ft	ft	ft	deg	ft	°/100ft
8291.00	91.54	178.05	7147.97	1143.42	-1143.42	-509.29	204.01	1251.71	1.19
8386.00	91.91	178.69	7145.11	1238.34	-1238.34	-506.59	202.25	1337.95	0.78
8482.00	91.41	178.90	7142.32	1334.28	-1334.28	-504.57	200.71	1426.50	0.56
8577.00	89.43	179.51	7141.63	1429.26	-1429.26	-503.25	199.40	1515.27	2.18
8672.00	87.48	179.04	7144.19	1524.21	-1524.21	-502.05	198.23	1604.77	2.11
8767.00	88.19	178.96	7147.77	1619.13	-1619.13	-500.38	197.17	1694.69	0.75
8863.00	88.12	179.34	7150.86	1715.07	-1715.07	-498.96	196.22	1786.18	0.41
8958.00	88.99	180.69	7153.25	1810.04	-1810.04	-498.99	195.41	1877.56	1.69
9053.00	88.76	181.05	7155.11	1905.01	-1905.01	-500.44	194.72	1969.64	0.45
9149.00	89.80	180.38	7156.32	2000.99	-2000.99	-501.63	194.07	2062.91	1.29
9244.00	91.14	180.18	7155.54	2095.99	-2095.99	-502.09	193.47	2155.28	1.43
9339.00	92.11	180.27	7152.85	2190.95	-2190.95	-502.46	192.92	2247.82	1.03
9435.00	92.21	179.78	7149.23	2286.88	-2286.88	-502.50	192.39	2341.43	0.52
9530.00	91.27	180.72	7146.34	2381.83	-2381.83	-502.92	191.92	2434.35	1.40
9625.00	91.24	179.37	7144.25	2476.80	-2476.80	-503.00	191.48	2527.36	1.43
9720.00	89.70	178.87	7143.47	2571.79	-2571.79	-501.53	191.03	2620.23	1.70
9815.00	90.57	177.94	7143.25	2666.75	-2666.75	-498.89	190.60	2713.01	1.34
9910.00	90.67	178.60	7142.22	2761.70	-2761.70	-496.02	190.18	2805.89	0.71

MD	Inc	Azim	TVD	VS	+N/-S	+E/-W	Closure Direction	Closure Distance	DLS
ft	deg	deg	ft	ft	ft	ft	deg	ft	°/100ft
10006.00	90.54	178.20	7141.21	2857.66	-2857.66	-493.33	189.79	2899.93	0.44
10101.00	91.21	178.83	7139.77	2952.61	-2952.61	-490.87	189.44	2993.14	0.97
10196.00	90.00	178.52	7138.77	3047.58	-3047.58	-488.67	189.11	3086.51	1.31
10292.00	91.75	181.20	7137.30	3143.55	-3143.55	-488.43	188.83	3181.27	3.33
10387.00	93.29	182.14	7133.13	3238.42	-3238.42	-491.19	188.62	3275.46	1.90
10483.00	91.54	180.97	7129.08	3334.29	-3334.29	-493.79	188.42	3370.66	2.18
10578.00	91.88	183.09	7126.24	3429.18	-3429.18	-497.16	188.25	3465.04	2.26
10673.00	87.24	182.97	7126.97	3524.02	-3524.02	-502.18	188.11	3559.62	4.88
10769.00	87.75	183.04	7131.16	3619.80	-3619.80	-507.21	187.98	3655.16	0.53
10864.00	89.13	183.27	7133.75	3714.62	-3714.62	-512.44	187.85	3749.80	1.47
10959.00	88.79	182.87	7135.48	3809.47	-3809.47	-517.53	187.74	3844.46	0.55
11054.00	88.83	181.77	7137.45	3904.37	-3904.37	-521.37	187.61	3939.02	1.16
11150.00	89.29	180.55	7139.03	4000.33	-4000.33	-523.31	187.45	4034.41	1.36
11245.00	90.07	180.29	7139.56	4095.33	-4095.33	-524.01	187.29	4128.71	0.86
11340.00	89.43	179.08	7139.97	4190.32	-4190.32	-523.50	187.12	4222.89	1.44
11435.00	90.10	179.16	7140.36	4285.31	-4285.31	-522.04	186.95	4316.99	0.71
11530.00	90.67	178.35	7139.72	4380.28	-4380.28	-519.97	186.77	4411.04	1.04
11568.00	91.18	178.14	7139.11	4418.26	-4418.26	-518.81	186.70	4448.62	1.44

5" = 100' FEET MD