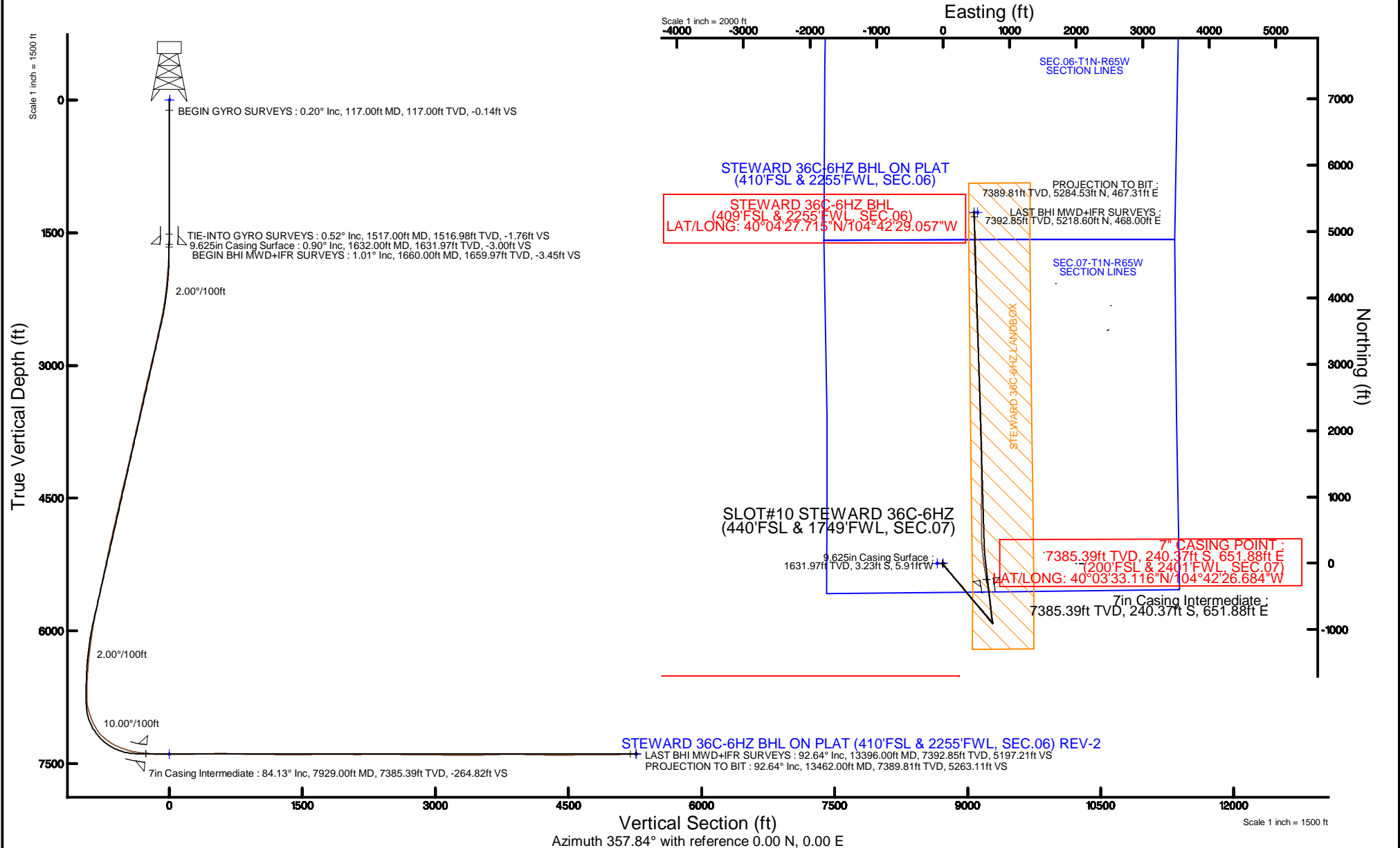


KERR-MCGEE OIL & GAS ONSHORE LP (LAMBERT STATE PLANE COORD)

Location: COLORADO Slot: SLOT#10 STEWARD 36C-6HZ (440'FSL & 1749'FWL, SEC.07)
 Field: WELD COUNTY (KERR MCGEE) Well: STEWARD 36C-6HZ
 Facility: SEC.07-T1N-R65W Wellbore: STEWARD 36C-6HZ PWB

Plot reference wellpath is STEWARD 36C-6HZ (REV-A.0) PWP		Grid System: NAD83 / Lambert Colorado SP, Northern Zone (501), US feet
True vertical depths are referenced to XTREME 8 (17KB) (RKB)		North Reference: True north
Measured depths are referenced to XTREME 8 (17KB) (RKB)		Scale: True distance
XTREME 8 (17KB) (RKB) to Mean Sea Level: 5018 feet		Depths are in feet
Mean Sea Level to Mud line (At Slot: SLOT#10 STEWARD 36C-6HZ (440'FSL & 1749'FWL, SEC.07)): 0 feet		Created by: amarc on 24/Feb/2015
Coordinates are in feet referenced to Slot		



REFERENCE WELLPATH IDENTIFICATION			
Operator	KERR-MCGEE OIL & GAS ONSHORE LP (LAMBERT STATE PLANE COORD)	Slot	SLOT#10 STEWARD 36C-6HZ (440'FSL & 1749'FWL, SEC.07)
Area	COLORADO	Well	STEWARD 36C-6HZ
Field	WELD COUNTY (KERR MCGEE)	Wellbore	STEWARD 36C-6HZ AWB (117'-13462'MD)
Facility	SEC.07-T1N-R65W		

REPORT SETUP INFORMATION			
Projection System	NAD83 / Lambert Colorado SP, Northern Zone (501), US feet	Software System	WellArchitect® 4.1.1
North Reference	True	User	Amarcar
Scale	0.999962	Report Generated	24/Feb/2015 at 08:40
Convergence at slot	0.51° East	Database/Source file	WellArchitectDB/STEWARD_36C-6HZ_AWB__117_-13462_MD_.xml

WELLPATH LOCATION						
	Local coordinates		Grid coordinates		Geographic coordinates	
	North[ft]	East[ft]	Easting[US ft]	Northing[US ft]	Latitude	Longitude
Slot Location	-74.49	-3065.97	3221196.61	1265637.57	40°03'35.492"N	104°42'35.068"W
Facility Reference Pt			3224261.66	1265739.76	40°03'36.230"N	104°41'55.637"W
Field Reference Pt			3197771.84	1268891.29	40°04'09.600"N	104°47'36.000"W

WELLPATH DATUM			
Calculation method	Minimum curvature	XTREME 8 (17'KB) (RKB) to Facility Vertical Datum	5018.00ft
Horizontal Reference Pt	Slot	XTREME 8 (17'KB) (RKB) to Mean Sea Level	5018.00ft
Vertical Reference Pt	XTREME 8 (17'KB) (RKB)	XTREME 8 (17'KB) (RKB) to Mud Line at Slot (SLOT#10 STEWARD 36C-6HZ (440'FSL & 1749'FWL, SEC.07))	5018.00ft
MD Reference Pt	XTREME 8 (17'KB) (RKB)	Section Origin	N 0.00, E 0.00 ft
Field Vertical Reference	Mean Sea Level	Section Azimuth	357.84°

REFERENCE WELLPATH IDENTIFICATION			
Operator	KERR-MCGEE OIL & GAS ONSHORE LP (LAMBERT STATE PLANE COORD)	Slot	SLOT#10 STEWARD 36C-6HZ (440'FSL & 1749'FWL, SEC.07)
Area	COLORADO	Well	STEWARD 36C-6HZ
Field	WELD COUNTY (KERR MCGEE)	Wellbore	STEWARD 36C-6HZ AWP (117'-13462'MD)
Facility	SEC.07-T1N-R65W		

WELLPATH DATA (145 stations) † = interpolated/extrapolated station										
MD [ft]	Inclination [°]	Azimuth [°]	TVD [ft]	Vert Sect [ft]	North [ft]	East [ft]	Latitude	Longitude	DLS ["/100ft]	Comments
0.00†	0.000	215.699	0.00	0.00	0.00	0.00	40°03'35.492"N	104°42'35.068"W	0.00	
17.00	0.000	215.699	17.00	0.00	0.00	0.00	40°03'35.492"N	104°42'35.068"W	0.00	
117.00	0.198	215.699	117.00	-0.14	-0.14	-0.10	40°03'35.491"N	104°42'35.069"W	0.20	BEGIN GYRO SURVEYS
217.00	0.097	140.181	217.00	-0.34	-0.35	-0.15	40°03'35.489"N	104°42'35.070"W	0.20	
317.00	0.206	226.482	317.00	-0.53	-0.53	-0.22	40°03'35.487"N	104°42'35.071"W	0.22	
417.00	0.175	203.122	417.00	-0.78	-0.80	-0.41	40°03'35.484"N	104°42'35.073"W	0.08	
517.00	0.189	326.833	517.00	-0.78	-0.80	-0.56	40°03'35.484"N	104°42'35.075"W	0.32	
617.00	0.051	231.335	617.00	-0.66	-0.69	-0.69	40°03'35.485"N	104°42'35.077"W	0.20	
717.00	0.091	88.593	717.00	-0.69	-0.72	-0.64	40°03'35.485"N	104°42'35.076"W	0.14	
817.00	0.036	322.742	817.00	-0.67	-0.69	-0.58	40°03'35.485"N	104°42'35.076"W	0.12	
917.00	0.334	266.157	917.00	-0.65	-0.68	-0.89	40°03'35.485"N	104°42'35.079"W	0.32	
1017.00	0.562	236.024	1016.99	-0.92	-0.98	-1.59	40°03'35.482"N	104°42'35.088"W	0.32	
1117.00	0.614	268.997	1116.99	-1.16	-1.26	-2.53	40°03'35.480"N	104°42'35.101"W	0.34	
1217.00	0.419	258.604	1216.99	-1.21	-1.34	-3.43	40°03'35.479"N	104°42'35.112"W	0.22	
1317.00	0.406	268.352	1316.98	-1.27	-1.43	-4.14	40°03'35.478"N	104°42'35.121"W	0.07	
1417.00	0.316	249.923	1416.98	-1.35	-1.53	-4.75	40°03'35.477"N	104°42'35.129"W	0.15	
1517.00	0.518	221.026	1516.98	-1.76	-1.97	-5.31	40°03'35.473"N	104°42'35.136"W	0.29	TIE-INTO GYRO SURVEYS
1660.00	1.010	193.610	1659.97	-3.45	-3.68	-6.03	40°03'35.456"N	104°42'35.146"W	0.42	BEGIN BHI MWD+HFR SURVEYS
1752.00	2.000	189.610	1751.93	-5.80	-6.05	-6.49	40°03'35.432"N	104°42'35.151"W	1.08	
1845.00	3.470	158.660	1844.83	-10.05	-10.27	-5.74	40°03'35.390"N	104°42'35.142"W	2.19	
1937.00	4.890	150.590	1936.58	-16.16	-16.28	-2.80	40°03'35.331"N	104°42'35.104"W	1.67	
2030.00	6.240	146.530	2029.14	-24.01	-23.95	1.94	40°03'35.255"N	104°42'35.043"W	1.51	
2122.00	7.320	142.130	2120.50	-33.04	-32.75	8.29	40°03'35.168"N	104°42'34.961"W	1.30	
2214.00	9.160	140.360	2211.54	-43.61	-43.01	16.56	40°03'35.067"N	104°42'34.855"W	2.02	
2306.00	11.290	139.900	2302.08	-56.53	-55.54	27.04	40°03'34.943"N	104°42'34.720"W	2.32	
2398.00	13.200	139.440	2391.98	-71.86	-70.41	39.67	40°03'34.796"N	104°42'34.558"W	2.08	
2490.00	14.790	141.950	2481.25	-89.61	-87.64	53.74	40°03'34.626"N	104°42'34.377"W	1.85	
2582.00	15.710	137.460	2570.01	-108.61	-106.07	69.40	40°03'34.444"N	104°42'34.175"W	1.63	
2674.00	17.210	135.150	2658.24	-128.11	-124.90	87.42	40°03'34.258"N	104°42'33.944"W	1.78	
2764.00	15.960	135.080	2744.49	-146.98	-143.10	105.55	40°03'34.078"N	104°42'33.711"W	1.39	
2856.00	16.330	140.550	2832.87	-166.56	-162.04	122.70	40°03'33.891"N	104°42'33.490"W	1.70	
2944.00	17.090	141.200	2917.15	-186.78	-181.67	138.66	40°03'33.697"N	104°42'33.285"W	0.89	
3029.00	15.420	141.040	2998.75	-205.85	-200.19	153.59	40°03'33.514"N	104°42'33.093"W	1.97	
3114.00	16.860	138.370	3080.40	-224.42	-218.20	168.89	40°03'33.336"N	104°42'32.896"W	1.91	
3202.00	17.500	139.000	3164.47	-244.58	-237.72	186.05	40°03'33.143"N	104°42'32.675"W	0.76	
3287.00	15.650	138.630	3245.94	-263.42	-255.97	202.01	40°03'32.962"N	104°42'32.470"W	2.18	
3374.00	17.400	138.100	3329.34	-282.51	-274.46	218.45	40°03'32.780"N	104°42'32.259"W	2.02	
3459.00	15.500	136.890	3410.86	-300.87	-292.21	234.70	40°03'32.604"N	104°42'32.050"W	2.27	
3544.00	15.690	135.200	3492.73	-317.90	-308.66	250.56	40°03'32.442"N	104°42'31.846"W	0.58	
3629.00	16.710	136.820	3574.36	-335.58	-325.73	267.03	40°03'32.273"N	104°42'31.634"W	1.31	
3716.00	16.420	142.220	3657.75	-355.01	-344.57	283.12	40°03'32.087"N	104°42'31.427"W	1.80	
3804.00	15.560	141.360	3742.34	-374.62	-363.62	298.11	40°03'31.899"N	104°42'31.234"W	1.01	
3889.00	16.740	141.980	3823.99	-393.71	-382.17	312.77	40°03'31.715"N	104°42'31.046"W	1.40	
3977.00	14.490	141.930	3908.73	-412.90	-400.82	327.36	40°03'31.531"N	104°42'30.858"W	2.56	
4062.00	15.460	142.720	3990.85	-430.78	-418.21	340.78	40°03'31.359"N	104°42'30.685"W	1.17	

REFERENCE WELLPATH IDENTIFICATION			
Operator	KERR-MCGEE OIL & GAS ONSHORE LP (LAMBERT STATE PLANE COORD)	Slot	SLOT#10 STEWARD 36C-6HZ (440'FSL & 1749'FWL, SEC.07)
Area	COLORADO	Well	STEWARD 36C-6HZ
Field	WELD COUNTY (KERR MCGEE)	Wellbore	STEWARD 36C-6HZ AWB (117'-13462'MD)
Facility	SEC.07-T1N-R65W		

WELLPATH DATA (145 stations)										
MD [ft]	Inclination [°]	Azimuth [°]	TVD [ft]	Vert Sect [ft]	North [ft]	East [ft]	Latitude	Longitude	DLS ["/100ft]	Comments
4147.00	14.680	139.000	4072.93	-448.44	-435.35	354.71	40°03'31.190"N	104°42'30.506"W	1.46	
4232.00	16.030	144.200	4154.89	-466.60	-453.00	368.65	40°03'31.015"N	104°42'30.327"W	2.27	
4320.00	17.170	143.550	4239.22	-487.45	-473.30	383.47	40°03'30.815"N	104°42'30.136"W	1.31	
4405.00	16.790	141.660	4320.52	-507.72	-493.02	398.54	40°03'30.620"N	104°42'29.943"W	0.79	
4490.00	15.470	142.020	4402.17	-526.83	-511.59	413.13	40°03'30.436"N	104°42'29.755"W	1.56	
4575.00	14.850	139.770	4484.21	-544.59	-528.84	427.14	40°03'30.266"N	104°42'29.575"W	1.01	
4661.00	16.710	139.060	4566.97	-562.91	-546.60	442.36	40°03'30.090"N	104°42'29.379"W	2.17	
4746.00	16.470	138.220	4648.43	-581.72	-564.81	458.40	40°03'29.910"N	104°42'29.173"W	0.40	
4831.00	15.600	137.980	4730.12	-599.78	-582.29	474.08	40°03'29.738"N	104°42'28.971"W	1.03	
4916.00	16.950	139.650	4811.72	-618.29	-600.22	489.75	40°03'29.560"N	104°42'28.770"W	1.68	
5002.00	16.420	140.770	4894.09	-637.84	-619.19	505.56	40°03'29.373"N	104°42'28.566"W	0.72	
5087.00	15.720	138.700	4975.77	-656.36	-637.15	520.75	40°03'29.195"N	104°42'28.371"W	1.06	
5172.00	16.710	135.050	5057.39	-674.26	-654.45	536.99	40°03'29.025"N	104°42'28.162"W	1.67	
5257.00	16.170	133.500	5138.92	-691.69	-671.25	554.21	40°03'28.859"N	104°42'27.941"W	0.82	
5342.00	15.850	135.130	5220.62	-708.69	-687.62	570.98	40°03'28.697"N	104°42'27.725"W	0.65	
5428.00	14.520	140.840	5303.62	-725.93	-704.30	586.08	40°03'28.532"N	104°42'27.531"W	2.33	
5515.00	14.300	142.730	5387.88	-743.43	-721.31	599.47	40°03'28.364"N	104°42'27.359"W	0.60	
5604.00	14.870	144.800	5474.02	-762.00	-739.39	612.71	40°03'28.185"N	104°42'27.188"W	0.87	
5689.00	15.110	138.910	5556.13	-779.76	-756.65	626.28	40°03'28.015"N	104°42'27.014"W	1.81	
5774.00	15.260	137.590	5638.16	-796.92	-773.26	641.10	40°03'27.850"N	104°42'26.823"W	0.44	
5861.00	14.940	136.490	5722.16	-814.08	-789.85	656.55	40°03'27.686"N	104°42'26.625"W	0.49	
5946.00	15.600	142.340	5804.16	-831.61	-806.84	671.07	40°03'27.519"N	104°42'26.438"W	1.97	
6034.00	13.590	139.130	5889.32	-849.31	-824.03	685.07	40°03'27.349"N	104°42'26.258"W	2.46	
6121.00	11.140	135.940	5974.30	-863.55	-837.80	697.61	40°03'27.213"N	104°42'26.096"W	2.92	
6206.00	10.250	138.550	6057.82	-875.51	-849.37	708.32	40°03'27.098"N	104°42'25.959"W	1.19	
6292.00	10.050	134.400	6142.47	-886.89	-860.36	718.75	40°03'26.990"N	104°42'25.825"W	0.88	
6378.00	8.810	143.940	6227.32	-897.80	-870.93	727.99	40°03'26.885"N	104°42'25.706"W	2.32	
6463.00	7.430	140.470	6311.46	-907.57	-880.43	735.32	40°03'26.791"N	104°42'25.612"W	1.72	
6548.00	5.930	136.640	6395.88	-915.25	-887.86	741.83	40°03'26.718"N	104°42'25.528"W	1.84	
6633.00	4.960	147.770	6480.50	-921.73	-894.17	746.81	40°03'26.656"N	104°42'25.464"W	1.68	
6718.00	3.230	155.030	6565.28	-927.12	-899.45	749.78	40°03'26.603"N	104°42'25.426"W	2.12	
6803.00	1.880	118.760	6650.20	-930.04	-902.29	752.01	40°03'26.575"N	104°42'25.397"W	2.40	
6889.00	0.800	39.300	6736.18	-930.32	-902.50	753.63	40°03'26.573"N	104°42'25.376"W	2.21	
6974.00	5.510	339.920	6821.04	-925.99	-898.21	752.60	40°03'26.616"N	104°42'25.389"W	6.06	
7059.00	18.850	336.210	6903.94	-909.26	-881.73	745.63	40°03'26.778"N	104°42'25.479"W	15.71	
7144.00	20.670	342.790	6983.94	-882.01	-854.83	735.65	40°03'27.044"N	104°42'25.607"W	3.38	
7230.00	27.700	351.520	7062.37	-847.43	-820.51	728.20	40°03'27.383"N	104°42'25.703"W	9.15	
7315.00	35.620	355.050	7134.66	-802.99	-776.24	723.14	40°03'27.821"N	104°42'25.768"W	9.57	
7404.00	47.740	353.580	7201.01	-744.04	-717.47	717.20	40°03'28.402"N	104°42'25.844"W	13.66	
7493.00	56.540	354.480	7255.58	-674.00	-647.65	709.93	40°03'29.092"N	104°42'25.938"W	9.92	
7579.00	63.330	354.060	7298.64	-599.76	-573.64	702.50	40°03'29.823"N	104°42'26.033"W	7.91	
7666.00	71.430	352.190	7332.08	-519.79	-493.98	692.85	40°03'30.610"N	104°42'26.157"W	9.52	
7753.00	75.670	350.790	7356.71	-436.89	-411.48	680.50	40°03'31.426"N	104°42'26.316"W	5.11	
7840.00	81.390	350.500	7374.00	-352.33	-327.39	666.64	40°03'32.257"N	104°42'26.495"W	6.58	
7884.00	82.520	350.300	7380.16	-309.13	-284.44	659.38	40°03'32.681"N	104°42'26.588"W	2.61	

REFERENCE WELLPATH IDENTIFICATION			
Operator	KERR-MCGEE OIL & GAS ONSHORE LP (LAMBERT STATE PLANE COORD)	Slot	SLOT#10 STEWARD 36C-6HZ (440'FSL & 1749'FWL, SEC.07)
Area	COLORADO	Well	STEWARD 36C-6HZ
Field	WELD COUNTY (KERR MCGEE)	Wellbore	STEWARD 36C-6HZ AWB (117'-13462'MD)
Facility	SEC.07-T1N-R65W		

WELLPATH DATA (145 stations) † = interpolated/extrapolated station											
MD [ft]	Inclination [°]	Azimuth [°]	TVD [ft]	Vert Sect [ft]	North [ft]	East [ft]	Latitude	Longitude	DLS [°/100ft]	Comments	
7929.00†	84.130	350.394	7385.39	-264.82	-240.37	651.88	40°03'33.116"N	104°42'26.684"W	3.58	7" CASING POINT	
8024.00	87.530	350.590	7392.30	-170.86	-146.94	636.23	40°03'34.040"N	104°42'26.886"W	3.58		
8113.00	88.520	351.550	7395.37	-82.54	-59.07	622.43	40°03'34.908"N	104°42'27.063"W	1.55		
8198.00	90.360	352.190	7396.20	1.99	25.06	610.41	40°03'35.740"N	104°42'27.218"W	2.29		
8283.00	90.580	353.310	7395.50	86.66	109.38	599.68	40°03'36.573"N	104°42'27.356"W	1.34		
8373.00	91.230	354.680	7394.08	176.44	198.87	590.27	40°03'37.457"N	104°42'27.477"W	1.68		
8462.00	90.770	355.970	7392.52	265.34	287.56	583.01	40°03'38.334"N	104°42'27.570"W	1.54		
8551.00	91.290	358.140	7390.92	354.31	376.42	578.44	40°03'39.212"N	104°42'27.629"W	2.51		
8638.00	91.410	359.740	7388.87	441.27	463.38	576.83	40°03'40.071"N	104°42'27.649"W	1.84		
8723.00	91.110	0.000	7387.01	526.19	548.36	576.64	40°03'40.911"N	104°42'27.652"W	0.47		
8811.00	89.410	359.440	7386.61	614.14	636.35	576.21	40°03'41.781"N	104°42'27.657"W	2.03		
8896.00	88.210	359.810	7388.37	699.08	721.33	575.65	40°03'42.620"N	104°42'27.664"W	1.48		
8981.00	88.270	359.640	7390.98	783.99	806.29	575.25	40°03'43.460"N	104°42'27.670"W	0.21		
9067.00	88.830	0.400	7393.16	869.90	892.26	575.28	40°03'44.309"N	104°42'27.669"W	1.10		
9152.00	89.230	0.730	7394.60	954.79	977.25	576.12	40°03'45.149"N	104°42'27.658"W	0.61		
9237.00	89.380	0.610	7395.63	1039.68	1062.23	577.11	40°03'45.989"N	104°42'27.664"W	0.23		
9322.00	89.560	0.200	7396.41	1124.59	1147.23	577.71	40°03'46.829"N	104°42'27.638"W	0.53		
9410.00	88.820	359.560	7397.66	1212.53	1235.22	577.53	40°03'47.699"N	104°42'27.640"W	1.11		
9495.00	88.700	359.590	7399.50	1297.47	1320.20	576.90	40°03'48.538"N	104°42'27.648"W	0.15		
9580.00	90.490	0.550	7400.10	1382.40	1405.19	577.00	40°03'49.378"N	104°42'27.647"W	2.39		
9753.00	90.830	0.050	7398.11	1555.22	1578.17	577.90	40°03'51.088"N	104°42'27.635"W	0.35		
9925.00	90.460	359.150	7396.17	1727.13	1750.16	576.70	40°03'52.787"N	104°42'27.651"W	0.57		
10097.00	89.500	358.890	7396.23	1899.09	1922.13	573.76	40°03'54.487"N	104°42'27.688"W	0.58		
10270.00	89.810	357.690	7397.27	2072.08	2095.05	568.60	40°03'56.196"N	104°42'27.755"W	0.72		
10440.00	90.460	357.880	7396.87	2242.08	2264.92	562.03	40°03'57.874"N	104°42'27.839"W	0.40		
10525.00	89.870	358.940	7396.63	2327.07	2349.88	559.67	40°03'58.714"N	104°42'27.869"W	1.43		
10696.00	90.060	358.120	7396.73	2498.06	2520.83	555.28	40°04'00.403"N	104°42'27.926"W	0.49		
10781.00	89.410	357.570	7397.12	2583.06	2605.76	552.09	40°04'01.243"N	104°42'27.967"W	1.00		
10868.00	90.000	357.530	7397.57	2670.05	2692.68	548.37	40°04'02.102"N	104°42'28.015"W	0.68		
10957.00	90.270	357.290	7397.36	2759.05	2781.59	544.35	40°04'02.980"N	104°42'28.066"W	0.41		
11044.00	89.100	357.340	7397.84	2846.04	2868.49	540.27	40°04'03.839"N	104°42'28.119"W	1.35		
11130.00	89.040	358.140	7399.24	2932.03	2954.41	536.88	40°04'04.688"N	104°42'28.162"W	0.93		
11215.00	88.490	358.520	7401.07	3017.01	3039.36	534.40	40°04'05.528"N	104°42'28.194"W	0.79		
11302.00	88.300	357.730	7403.50	3103.97	3126.28	531.56	40°04'06.386"N	104°42'28.231"W	0.93		
11387.00	89.470	358.730	7405.16	3188.95	3211.22	528.93	40°04'07.226"N	104°42'28.265"W	1.81		
11558.00	89.660	356.930	7406.46	3359.94	3382.08	522.46	40°04'08.914"N	104°42'28.348"W	1.06		
11643.00	91.600	357.390	7405.52	3444.92	3466.97	518.25	40°04'09.753"N	104°42'28.402"W	2.35		
11728.00	91.750	357.650	7403.04	3529.89	3551.85	514.57	40°04'10.592"N	104°42'28.449"W	0.35		
11813.00	91.690	357.550	7400.49	3614.85	3636.74	511.01	40°04'11.431"N	104°42'28.495"W	0.14		
11898.00	91.530	357.730	7398.10	3699.81	3721.63	507.52	40°04'12.270"N	104°42'28.540"W	0.28		
11983.00	91.170	357.410	7396.10	3784.79	3806.53	503.91	40°04'13.109"N	104°42'28.586"W	0.57		
12073.00	89.280	359.170	7395.74	3874.78	3896.49	501.23	40°04'13.998"N	104°42'28.621"W	2.87		
12158.00	89.530	359.340	7396.63	3959.75	3981.47	500.12	40°04'14.838"N	104°42'28.635"W	0.36		
12243.00	88.700	358.860	7397.94	4044.72	4066.45	498.79	40°04'15.677"N	104°42'28.652"W	1.13		
12416.00	88.630	357.910	7401.97	4217.66	4239.33	493.91	40°04'17.386"N	104°42'28.715"W	0.55		

REFERENCE WELLPATH IDENTIFICATION			
Operator	KERR-MCGEE OIL & GAS ONSHORE LP (LAMBERT STATE PLANE COORD)	Slot	SLOT#10 STEWARD 36C-6HZ (440'FSL & 1749'FWL, SEC.07)
Area	COLORADO	Well	STEWARD 36C-6HZ
Field	WELD COUNTY (KERR MCGEE)	Wellbore	STEWARD 36C-6HZ AWB (117'-13462'MD)
Facility	SEC.07-T1N-R65W		

WELLPATH DATA (145 stations)										
MD [ft]	Inclination [°]	Azimuth [°]	TVD [ft]	Vert Sect [ft]	North [ft]	East [ft]	Latitude	Longitude	DLS [°/100ft]	Comments
12588.00	89.560	357.180	7404.69	4389.63	4411.15	486.55	40°04'19.084"N	104°42'28.809"W	0.69	
12674.00	90.830	357.100	7404.39	4475.62	4497.04	482.26	40°04'19.933"N	104°42'28.865"W	1.48	
12759.00	91.450	356.990	7402.70	4560.60	4581.91	477.88	40°04'20.771"N	104°42'28.921"W	0.74	
12846.00	91.350	357.650	7400.58	4647.57	4668.79	473.81	40°04'21.630"N	104°42'28.973"W	0.77	
12931.00	90.860	358.520	7398.94	4732.55	4753.73	470.97	40°04'22.469"N	104°42'29.010"W	1.17	
13016.00	90.330	359.680	7398.05	4817.52	4838.71	469.63	40°04'23.309"N	104°42'29.027"W	1.50	
13101.00	89.160	0.040	7398.43	4902.47	4923.71	469.43	40°04'24.149"N	104°42'29.030"W	1.44	
13274.00	91.570	359.670	7397.33	5075.34	5096.69	468.99	40°04'25.859"N	104°42'29.035"W	1.41	
13396.00	92.640	359.400	7392.85	5197.21	5218.60	468.00	40°04'27.063"N	104°42'29.048"W	0.90	LAST BHI MWD+IFR SURVEYS
13462.00	92.640	359.400	7389.81	5263.11	5284.53	467.31	40°04'27.715"N	104°42'29.057"W	0.00	PROJECTION TO BIT

HOLE & CASING SECTIONS - Ref Wellbore: STEWARD 36C-6HZ AWB (117'-13462'MD) Ref Wellpath: STEWARD 36C-6HZ AWP (117'-13462'MD)										
String/Diameter	Start MD [ft]	End MD [ft]	Interval [ft]	Start TVD [ft]	End TVD [ft]	Start N/S [ft]	Start E/W [ft]	End N/S [ft]	End E/W [ft]	
13.5in Open Hole	17.00	1642.00	1625.00	17.00	1641.97	0.00	0.00	-3.38	-5.95	
9.625in Casing Surface	17.00	1632.00	1615.00	17.00	1631.97	0.00	0.00	-3.23	-5.91	
8.75in Open Hole	1642.00	7939.00	6297.00	1641.97	7386.38	-3.38	-5.95	-230.56	650.22	
7in Casing Intermediate	17.00	7929.00	7912.00	17.00	7385.39	0.00	0.00	-240.37	651.88	
6.125in Open Hole	7939.00	13462.00	5523.00	7386.38	7389.81	-230.56	650.22	5284.53	467.31	

TARGETS								
Name	TVD [ft]	North [ft]	East [ft]	Grid East [US ft]	Grid North [US ft]	Latitude	Longitude	Shape
SEC.06-T1N-R65W SECTION LINES	0.00	-0.30	-89.81	3221106.82	1265636.47	40°03'35.489"N	104°42'36.223"W	polygon
SEC.07-T1N-R65W SECTION LINES	0.00	-0.30	-89.81	3221106.82	1265636.47	40°03'35.489"N	104°42'36.223"W	polygon
STEWARD 36C-6HZ BHL ON PLAT (410'FSL & 2255'FWL, SEC.06) REV-2	7388.00	5285.91	467.40	3221616.87	1270927.22	40°04'27.728"N	104°42'29.056"W	point
STEWARD 36C-6HZ BHL ON PLAT (410'FSL & 2307'FWL, SEC.06) REV-1	7393.00	5286.27	520.01	3221669.47	1270928.06	40°04'27.732"N	104°42'28.379"W	point
STEWARD 36C-6HZ LANDBOX	7393.00	0.00	0.00	3221196.61	1265637.57	40°03'35.492"N	104°42'35.068"W	polygon

WELLPATH COMPOSITION - Ref Wellbore: STEWARD 36C-6HZ AWB (117'-13462'MD) Ref Wellpath: STEWARD 36C-6HZ AWP (117'-13462'MD)					
Start MD [ft]	End MD [ft]	Positional Uncertainty Model	Log Name/Comment	Wellbore	
17.00	1517.00	Generic gyro - continuous (Standard)	VES GYRO SURVEYS 13.5" <117-1517>	STEWARD 36C-6HZ AWB (117'-13462'MD)	
1517.00	7884.00	NaviTrak (MAGCORR,IFR)	BHI MWD+IFR SURVEYS 8.75" <1660-7884>	STEWARD 36C-6HZ AWB (117'-13462'MD)	
7884.00	13396.00	NaviTrak (MAGCORR,IFR)	BHI MWD+IFR SURVEYS 6.125" <8024-13396>	STEWARD 36C-6HZ AWB (117'-13462'MD)	
13396.00	13462.00	Blind Drilling (std)	Projection to bit	STEWARD 36C-6HZ AWB (117'-13462'MD)	

REFERENCE WELLPATH IDENTIFICATION			
Operator	KERR-MCGEE OIL & GAS ONSHORE LP (LAMBERT STATE PLANE COORD)	Slot	SLOT#10 STEWARD 36C-6HZ (440'FSL & 1749'FWL, SEC.07)
Area	COLORADO	Well	STEWARD 36C-6HZ
Field	WELD COUNTY (KERR MCGEE)	Wellbore	STEWARD 36C-6HZ AWB (117'-13462'MD)
Facility	SEC.07-T1N-R65W		

WELLPATH COMMENTS				
MD [ft]	Inclination [°]	Azimuth [°]	TVD [ft]	Comment
117.00	0.198	215.699	117.00	BEGIN GYRO SURVEYS
1517.00	0.518	221.026	1516.98	TIE-INTO GYRO SURVEYS
1660.00	1.010	193.610	1659.97	BEGIN BHI MWD+IFR SURVEYS
7929.00	84.130	350.394	7385.39	7" CASING POINT
13396.00	92.640	359.400	7392.85	LAST BHI MWD+IFR SURVEYS
13462.00	92.640	359.400	7389.81	PROJECTION TO BIT