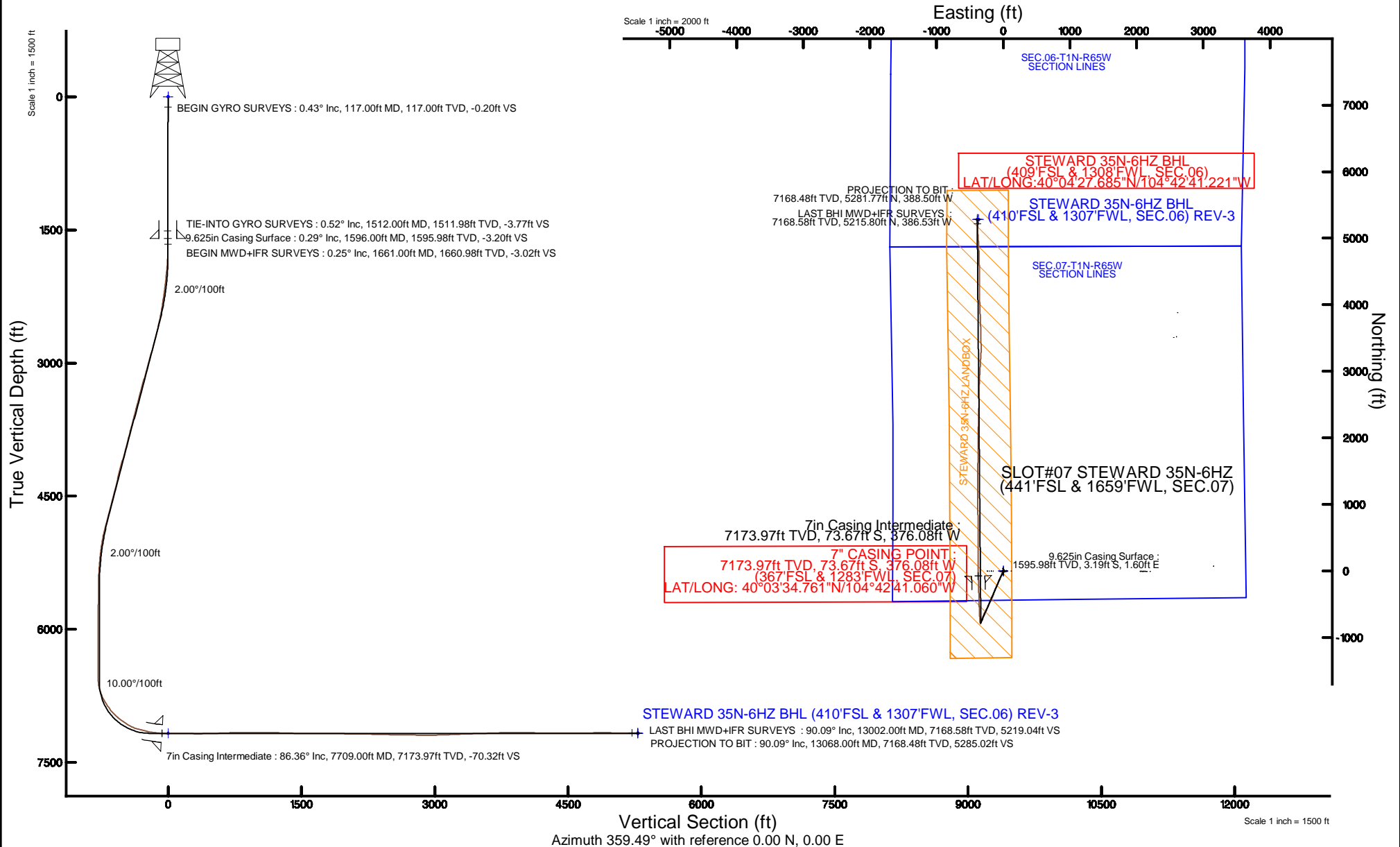


KERR-MCGEE OIL & GAS ONSHORE LP (LAMBERT STATE PLANE COORD)

Location: COLORADO Slot: SLOT#07 STEWARD 35N-6HZ (441'FSL & 1659'FWL, SEC.07)
 Field: WELD COUNTY (KERR MCGEE) Well: STEWARD 35N-6HZ
 Facility: SEC.07-T1N-R65W Wellbore: STEWARD 35N-6HZ PWB

Plot reference wellpath is STEWARD 35N-6HZ (REV-A.0) PWP

True vertical depths are referenced to XTREME 8 (17KB) (RKB)	Grid System: NAD83 / Lambert Colorado SP, Northern Zone (501), US feet
Measured depths are referenced to XTREME 8 (17KB) (RKB)	North Reference: True north
XTREME 8 (17KB) (RKB) to Mean Sea Level: 5018 feet	Scale: True distance
Mean Sea Level to Mud line (At Slot: SLOT#07 STEWARD 35N-6HZ (441'FSL & 1659'FWL, SEC.07)): 0 feet	Depths are in feet
Coordinates are in feet referenced to Slot	Created by: amarcar on 20/Feb/2015



REFERENCE WELLPATH IDENTIFICATION			
Operator	KERR-MCGEE OIL & GAS ONSHORE LP (LAMBERT STATE PLANE COORD)	Slot	SLOT#07 STEWARD 35N-6HZ (441'FSL & 1659'FWL, SEC.07)
Area	COLORADO	Well	STEWARD 35N-6HZ
Field	WELD COUNTY (KERR MCGEE)	Wellbore	STEWARD 35N-6HZ AWB (117'-13068'MD)
Facility	SEC.07-T1N-R65W		

REPORT SETUP INFORMATION			
Projection System	NAD83 / Lambert Colorado SP, Northern Zone (501), US feet	Software System	WellArchitect® 4.1.1
North Reference	True	User	Amarcar
Scale	0.999962	Report Generated	20/Feb/2015 at 13:58
Convergence at slot	0.51° East	Database/Source file	WellArchitectDB/STEWARD_35N-6HZ_AWB__117_-13068_MD_.xml

WELLPATH LOCATION						
	Local coordinates		Grid coordinates		Geographic coordinates	
	North[ft]	East[ft]	Easting[US ft]	Northing[US ft]	Latitude	Longitude
Slot Location	-74.78	-3155.77	3221106.82	1265636.47	40°03'35.489"N	104°42'36.223"W
Facility Reference Pt			3224261.66	1265739.76	40°03'36.230"N	104°41'55.637"W
Field Reference Pt			3197771.84	1268891.29	40°04'09.600"N	104°47'36.000"W

WELLPATH DATUM			
Calculation method	Minimum curvature	XTREME 8 (17'KB) (RKB) to Facility Vertical Datum	5018.00ft
Horizontal Reference Pt	Slot	XTREME 8 (17'KB) (RKB) to Mean Sea Level	5018.00ft
Vertical Reference Pt	XTREME 8 (17'KB) (RKB)	XTREME 8 (17'KB) (RKB) to Mud Line at Slot (SLOT#07 STEWARD 35N-6HZ (441'FSL & 1659'FWL, SEC.07))	5018.00ft
MD Reference Pt	XTREME 8 (17'KB) (RKB)	Section Origin	N 0.00, E 0.00 ft
Field Vertical Reference	Mean Sea Level	Section Azimuth	359.49°

REFERENCE WELLPATH IDENTIFICATION			
Operator	KERR-MCGEE OIL & GAS ONSHORE LP (LAMBERT STATE PLANE COORD)	Slot	SLOT#07 STEWARD 35N-6HZ (441'FSL & 1659'FWL, SEC.07)
Area	COLORADO	Well	STEWARD 35N-6HZ
Field	WELD COUNTY (KERR MCGEE)	Wellbore	STEWARD 35N-6HZ AWB (117'-13068'MD)
Facility	SEC.07-T1N-R65W		

WELLPATH DATA (126 stations) † = interpolated/extrapolated station										
MD [ft]	Inclination [°]	Azimuth [°]	TVD [ft]	Vert Sect [ft]	North [ft]	East [ft]	Latitude	Longitude	DLS [°/100ft]	Comments
0.00†	0.000	236.302	0.00	0.00	0.00	0.00	40°03'35.489°N	104°42'36.223°W	0.00	
17.00	0.000	236.302	17.00	0.00	0.00	0.00	40°03'35.489°N	104°42'36.223°W	0.00	
117.00	0.425	236.302	117.00	-0.20	-0.21	-0.31	40°03'35.487°N	104°42'36.227°W	0.43	BEGIN GYRO SURVEYS
217.00	0.265	201.833	217.00	-0.62	-0.63	-0.70	40°03'35.483°N	104°42'36.232°W	0.26	
317.00	0.355	210.755	317.00	-1.10	-1.11	-0.95	40°03'35.478°N	104°42'36.235°W	0.10	
417.00	0.006	226.268	417.00	-1.37	-1.38	-1.11	40°03'35.475°N	104°42'36.237°W	0.35	
517.00	0.070	112.774	517.00	-1.39	-1.40	-1.06	40°03'35.475°N	104°42'36.237°W	0.07	
617.00	0.069	102.217	617.00	-1.43	-1.44	-0.94	40°03'35.475°N	104°42'36.235°W	0.01	
717.00	0.291	117.869	716.99	-1.57	-1.57	-0.66	40°03'35.473°N	104°42'36.231°W	0.23	
817.00	0.223	130.892	816.99	-1.82	-1.82	-0.29	40°03'35.471°N	104°42'36.227°W	0.09	
917.00	0.445	157.436	916.99	-2.30	-2.30	0.01	40°03'35.466°N	104°42'36.223°W	0.26	
1017.00	0.391	122.424	1016.99	-2.85	-2.85	0.45	40°03'35.461°N	104°42'36.217°W	0.26	
1117.00	0.211	153.520	1116.99	-3.20	-3.19	0.82	40°03'35.457°N	104°42'36.213°W	0.24	
1217.00	0.203	120.006	1216.99	-3.46	-3.45	1.05	40°03'35.455°N	104°42'36.209°W	0.12	
1317.00	0.398	137.119	1316.99	-3.80	-3.79	1.44	40°03'35.452°N	104°42'36.204°W	0.21	
1417.00	0.102	212.180	1416.99	-4.13	-4.12	1.63	40°03'35.448°N	104°42'36.202°W	0.38	
1512.00	0.521	354.909	1511.98	-3.77	-3.76	1.55	40°03'35.452°N	104°42'36.203°W	0.64	TIE-INTO GYRO SURVEYS
1661.00	0.250	76.120	1660.98	-3.02	-3.01	1.80	40°03'35.459°N	104°42'36.200°W	0.36	BEGIN MWD+IFR SURVEYS
1752.00	1.050	213.070	1751.98	-3.67	-3.66	1.54	40°03'35.453°N	104°42'36.203°W	1.37	
1844.00	3.660	204.820	1843.89	-7.03	-7.03	-0.15	40°03'35.420°N	104°42'36.225°W	2.85	
1936.00	5.290	201.190	1935.61	-13.63	-13.65	-2.92	40°03'35.354°N	104°42'36.261°W	1.80	
2029.00	6.360	199.960	2028.13	-22.43	-22.49	-6.23	40°03'35.267°N	104°42'36.303°W	1.16	
2121.00	7.740	200.740	2119.43	-32.98	-33.07	-10.16	40°03'35.162°N	104°42'36.354°W	1.50	
2212.00	8.800	211.040	2209.49	-44.63	-44.77	-15.92	40°03'35.047°N	104°42'36.428°W	2.00	
2304.00	9.560	209.410	2300.31	-57.25	-57.46	-23.30	40°03'34.921°N	104°42'36.523°W	0.87	
2396.00	11.370	208.600	2390.77	-71.79	-72.07	-31.39	40°03'34.777°N	104°42'36.627°W	1.97	
2488.00	12.360	207.390	2480.81	-88.42	-88.78	-40.26	40°03'34.612°N	104°42'36.741°W	1.11	
2580.00	14.040	206.230	2570.37	-107.09	-107.53	-49.73	40°03'34.426°N	104°42'36.863°W	1.85	
2671.00	15.080	203.320	2658.45	-127.77	-128.31	-59.29	40°03'34.221°N	104°42'36.986°W	1.40	
2763.00	15.960	202.730	2747.09	-150.34	-150.96	-68.92	40°03'33.997°N	104°42'37.109°W	0.97	
2855.00	16.690	200.020	2835.39	-174.34	-175.04	-78.33	40°03'33.759°N	104°42'37.230°W	1.15	
2946.00	16.370	203.030	2922.63	-198.33	-199.12	-87.82	40°03'33.521°N	104°42'37.352°W	1.00	
3038.00	17.410	204.620	3010.66	-222.68	-223.57	-98.62	40°03'33.280°N	104°42'37.491°W	1.24	
3129.00	16.700	205.590	3097.66	-246.75	-247.74	-109.94	40°03'33.041°N	104°42'37.637°W	0.84	
3220.00	17.740	201.960	3184.58	-271.30	-272.39	-120.78	40°03'32.797°N	104°42'37.776°W	1.64	
3311.00	16.600	199.350	3271.52	-296.34	-297.51	-130.27	40°03'32.549°N	104°42'37.898°W	1.51	
3396.00	15.270	198.710	3353.25	-318.33	-319.57	-137.88	40°03'32.331°N	104°42'37.996°W	1.58	
3481.00	15.660	196.340	3435.18	-339.88	-341.18	-144.70	40°03'32.117°N	104°42'38.084°W	0.87	
3566.00	15.760	196.790	3517.00	-361.88	-363.24	-151.26	40°03'31.899°N	104°42'38.168°W	0.19	
3652.00	15.400	206.160	3599.86	-383.23	-384.67	-159.67	40°03'31.688°N	104°42'38.276°W	2.95	
3739.00	16.190	206.280	3683.57	-404.38	-405.92	-170.13	40°03'31.478°N	104°42'38.411°W	0.91	
3824.00	17.000	205.030	3765.03	-426.17	-427.80	-180.64	40°03'31.261°N	104°42'38.546°W	1.04	
3910.00	15.400	204.710	3847.61	-447.85	-449.57	-190.73	40°03'31.046°N	104°42'38.676°W	1.86	
3997.00	15.880	207.340	3931.39	-468.82	-470.64	-201.03	40°03'30.838°N	104°42'38.808°W	0.98	
4082.00	16.610	205.550	4013.00	-490.02	-491.93	-211.61	40°03'30.628°N	104°42'38.944°W	1.04	

REFERENCE WELLPATH IDENTIFICATION			
Operator	KERR-MCGEE OIL & GAS ONSHORE LP (LAMBERT STATE PLANE COORD)	Slot	SLOT#07 STEWARD 35N-6HZ (441'FSL & 1659'FWL, SEC.07)
Area	COLORADO	Well	STEWARD 35N-6HZ
Field	WELD COUNTY (KERR MCGEE)	Wellbore	STEWARD 35N-6HZ AWB (117'-13068'MD)
Facility	SEC.07-T1N-R65W		

WELLPATH DATA (126 stations) † = interpolated/extrapolated station										
MD [ft]	Inclination [°]	Azimuth [°]	TVD [ft]	Vert Sect [ft]	North [ft]	East [ft]	Latitude	Longitude	DLS [°/100ft]	Comments
4169.00	17.760	204.760	4096.11	-513.19	-515.20	-222.53	40°03'30.398"N	104°42'39.085"W	1.35	
4254.00	15.570	203.680	4177.54	-535.32	-537.42	-232.54	40°03'30.178"N	104°42'39.214"W	2.60	
4340.00	15.600	206.090	4260.38	-556.19	-558.37	-242.26	40°03'29.971"N	104°42'39.339"W	0.75	
4514.00	17.280	210.720	4427.26	-599.21	-601.61	-265.76	40°03'29.544"N	104°42'39.641"W	1.22	
4599.00	14.990	211.690	4508.91	-619.31	-621.82	-277.98	40°03'29.344"N	104°42'39.798"W	2.71	
4687.00	15.420	201.090	4593.85	-639.82	-642.42	-288.17	40°03'29.140"N	104°42'39.929"W	3.19	
4772.00	14.490	200.570	4675.97	-660.25	-662.92	-295.97	40°03'28.938"N	104°42'40.029"W	1.11	
4857.00	15.990	202.700	4757.98	-680.94	-683.68	-304.23	40°03'28.733"N	104°42'40.136"W	1.88	
4942.00	15.590	201.730	4839.77	-702.27	-705.09	-312.98	40°03'28.521"N	104°42'40.248"W	0.56	
5030.00	15.000	202.340	4924.65	-723.71	-726.61	-321.68	40°03'28.308"N	104°42'40.360"W	0.69	
5115.00	10.590	204.510	5007.52	-740.93	-743.90	-329.11	40°03'28.138"N	104°42'40.455"W	5.22	
5199.00	8.480	202.800	5090.35	-753.62	-756.63	-334.71	40°03'28.012"N	104°42'40.528"W	2.53	
5284.00	6.710	196.620	5174.61	-764.12	-767.17	-338.56	40°03'27.908"N	104°42'40.577"W	2.29	
5371.00	4.620	187.740	5261.18	-772.44	-775.51	-340.49	40°03'27.825"N	104°42'40.602"W	2.60	
5456.00	3.570	169.520	5345.96	-778.44	-781.51	-340.47	40°03'27.766"N	104°42'40.602"W	1.95	
5541.00	1.980	122.100	5430.87	-781.84	-784.89	-338.74	40°03'27.733"N	104°42'40.579"W	3.13	
5626.00	1.050	121.470	5515.84	-783.04	-786.08	-336.83	40°03'27.721"N	104°42'40.555"W	1.09	
5968.00	1.340	256.720	5857.81	-785.58	-788.63	-338.05	40°03'27.696"N	104°42'40.570"W	0.65	
6400.00	0.460	211.920	6289.75	-788.16	-791.26	-343.88	40°03'27.670"N	104°42'40.646"W	0.25	
6657.00	0.520	56.890	6546.75	-788.41	-791.50	-343.45	40°03'27.667"N	104°42'40.640"W	0.37	
6744.00	10.680	351.220	6633.24	-780.19	-783.30	-344.36	40°03'27.748"N	104°42'40.652"W	12.04	
6829.00	19.970	352.060	6715.12	-757.96	-761.09	-347.57	40°03'27.968"N	104°42'40.693"W	10.93	
6918.00	28.830	356.960	6796.10	-721.37	-724.53	-350.81	40°03'28.329"N	104°42'40.735"W	10.20	
7005.00	34.200	355.720	6870.24	-675.99	-679.17	-353.75	40°03'28.777"N	104°42'40.772"W	6.22	
7090.00	41.800	357.090	6937.18	-623.77	-626.98	-356.98	40°03'29.293"N	104°42'40.814"W	9.00	
7175.00	50.010	358.350	6996.28	-562.80	-566.03	-359.36	40°03'29.895"N	104°42'40.845"W	9.72	
7263.00	56.290	358.430	7049.02	-492.43	-495.68	-361.33	40°03'30.591"N	104°42'40.870"W	7.14	
7348.00	61.390	357.770	7092.99	-419.74	-423.00	-363.76	40°03'31.309"N	104°42'40.901"W	6.04	
7433.00	74.040	358.120	7125.16	-341.28	-344.56	-366.56	40°03'32.084"N	104°42'40.937"W	14.89	
7519.00	76.780	358.190	7146.82	-258.08	-261.39	-369.24	40°03'32.906"N	104°42'40.972"W	3.19	
7604.00	81.650	357.990	7162.72	-174.64	-177.96	-372.02	40°03'33.730"N	104°42'41.007"W	5.73	
7660.00	83.850	357.420	7169.79	-119.11	-122.46	-374.25	40°03'34.279"N	104°42'41.036"W	4.06	
7709.00†	86.357	358.284	7173.97	-70.32	-73.67	-376.08	40°03'34.761"N	104°42'41.060"W	5.41	7" CASING POINT
7771.00	89.530	359.370	7176.20	-8.37	-11.74	-377.34	40°03'35.373"N	104°42'41.076"W	5.41	
7858.00	90.330	359.010	7176.30	78.63	75.25	-378.57	40°03'36.233"N	104°42'41.092"W	1.01	
7946.00	90.210	0.190	7175.89	166.63	163.25	-379.19	40°03'37.102"N	104°42'41.100"W	1.35	
8035.00	88.790	359.940	7176.66	255.61	252.24	-379.09	40°03'37.982"N	104°42'41.098"W	1.62	
8124.00	90.120	1.470	7177.51	344.59	341.23	-377.99	40°03'38.861"N	104°42'41.084"W	2.28	
8212.00	91.200	0.030	7176.50	432.56	429.21	-376.84	40°03'39.731"N	104°42'41.070"W	2.05	
8387.00	92.500	359.300	7170.85	607.46	604.11	-377.86	40°03'41.459"N	104°42'41.083"W	0.85	
8473.00	92.400	359.570	7167.17	693.38	690.03	-378.71	40°03'42.308"N	104°42'41.094"W	0.33	
8562.00	91.410	359.480	7164.21	782.33	778.98	-379.45	40°03'43.187"N	104°42'41.103"W	1.12	
8651.00	90.180	359.030	7162.98	871.32	867.96	-380.60	40°03'44.066"N	104°42'41.118"W	1.47	
8740.00	89.870	359.590	7162.94	960.32	956.95	-381.68	40°03'44.946"N	104°42'41.132"W	0.72	
8827.00	89.440	359.560	7163.46	1047.32	1043.95	-382.32	40°03'45.805"N	104°42'41.140"W	0.50	

REFERENCE WELLPATH IDENTIFICATION			
Operator	KERR-MCGEE OIL & GAS ONSHORE LP (LAMBERT STATE PLANE COORD)	Slot	SLOT#07 STEWARD 35N-6HZ (441'FSL & 1659'FWL, SEC.07)
Area	COLORADO	Well	STEWARD 35N-6HZ
Field	WELD COUNTY (KERR MCGEE)	Wellbore	STEWARD 35N-6HZ AWB (117'-13068'MD)
Facility	SEC.07-T1N-R65W		

WELLPATH DATA (126 stations)										
MD [ft]	Inclination [°]	Azimuth [°]	TVD [ft]	Vert Sect [ft]	North [ft]	East [ft]	Latitude	Longitude	DLS ["/100ft]	Comments
8912.00	89.010	359.820	7164.61	1132.31	1128.94	-382.78	40°03'46.645"N	104°42'41.146"W	0.59	
9000.00	88.640	359.830	7166.42	1220.29	1216.92	-383.05	40°03'47.515"N	104°42'41.150"W	0.42	
9085.00	88.080	359.600	7168.85	1305.25	1301.88	-383.47	40°03'48.354"N	104°42'41.155"W	0.71	
9171.00	88.320	0.320	7171.55	1391.20	1387.84	-383.53	40°03'49.204"N	104°42'41.156"W	0.88	
9256.00	88.700	0.750	7173.76	1476.16	1472.81	-382.74	40°03'50.044"N	104°42'41.146"W	0.67	
9426.00	90.330	1.380	7175.20	1646.08	1642.76	-379.58	40°03'51.723"N	104°42'41.105"W	1.03	
9599.00	89.590	0.760	7175.32	1819.02	1815.73	-376.35	40°03'53.432"N	104°42'41.064"W	0.56	
9769.00	89.160	0.020	7177.18	1988.98	1985.72	-375.19	40°03'55.112"N	104°42'41.049"W	0.50	
9942.00	89.070	0.910	7179.85	2161.94	2158.69	-373.79	40°03'56.822"N	104°42'41.031"W	0.52	
10114.00	88.700	1.540	7183.19	2333.82	2330.62	-370.11	40°03'58.521"N	104°42'40.983"W	0.42	
10286.00	88.050	1.820	7188.07	2505.63	2502.47	-365.07	40°04'00.219"N	104°42'40.919"W	0.41	
10373.00	89.320	0.260	7190.07	2592.57	2589.43	-363.49	40°04'01.078"N	104°42'40.898"W	2.31	
10544.00	89.470	1.050	7191.87	2763.52	2760.41	-361.54	40°04'02.768"N	104°42'40.873"W	0.47	
10629.00	88.580	2.770	7193.32	2848.43	2845.34	-358.71	40°04'03.607"N	104°42'40.837"W	2.28	
10799.00	92.000	3.160	7192.46	3018.09	3015.09	-349.91	40°04'05.285"N	104°42'40.724"W	2.02	
10970.00	92.260	3.490	7186.10	3188.59	3185.68	-340.00	40°04'06.971"N	104°42'40.596"W	0.25	
11057.00	92.810	4.290	7182.26	3275.25	3272.40	-334.11	40°04'07.827"N	104°42'40.520"W	1.12	
11146.00	91.550	358.420	7178.87	3364.09	3361.27	-332.01	40°04'08.706"N	104°42'40.493"W	6.74	
11319.00	91.690	358.870	7173.98	3537.01	3534.15	-336.10	40°04'10.414"N	104°42'40.546"W	0.27	
11491.00	92.460	357.700	7167.75	3708.85	3705.95	-341.24	40°04'12.112"N	104°42'40.612"W	0.81	
11576.00	91.480	358.370	7164.83	3793.77	3790.85	-344.15	40°04'12.951"N	104°42'40.650"W	1.40	
11661.00	90.640	357.640	7163.26	3878.73	3875.79	-347.11	40°04'13.790"N	104°42'40.688"W	1.31	
11747.00	89.010	358.080	7163.52	3964.69	3961.72	-350.32	40°04'14.640"N	104°42'40.729"W	1.96	
11832.00	88.530	357.060	7165.34	4049.62	4046.62	-353.93	40°04'15.479"N	104°42'40.776"W	1.33	
11917.00	88.730	358.220	7167.37	4134.55	4131.53	-357.42	40°04'16.318"N	104°42'40.821"W	1.38	
12002.00	88.360	359.430	7169.53	4219.51	4216.48	-359.17	40°04'17.157"N	104°42'40.843"W	1.49	
12087.00	89.560	359.890	7171.08	4304.50	4301.46	-359.67	40°04'17.997"N	104°42'40.849"W	1.51	
12172.00	90.670	0.600	7170.91	4389.49	4386.46	-359.31	40°04'18.837"N	104°42'40.845"W	1.55	
12262.00	89.720	359.980	7170.60	4479.48	4476.46	-358.85	40°04'19.726"N	104°42'40.839"W	1.26	
12347.00	90.460	359.090	7170.47	4564.48	4561.45	-359.54	40°04'20.566"N	104°42'40.848"W	1.36	
12432.00	91.230	358.780	7169.21	4649.46	4646.43	-361.12	40°04'21.406"N	104°42'40.868"W	0.98	
12519.00	90.770	357.830	7167.69	4736.43	4733.37	-363.69	40°04'22.265"N	104°42'40.901"W	1.21	
12604.00	90.460	357.720	7166.78	4821.39	4818.31	-366.99	40°04'23.104"N	104°42'40.944"W	0.39	
12777.00	89.230	356.330	7167.25	4994.22	4991.06	-375.97	40°04'24.812"N	104°42'41.059"W	1.07	
13002.00	90.090	358.290	7168.58	5219.04	5215.80	-386.53	40°04'27.033"N	104°42'41.195"W	0.95	LAST BHI MWD+IFR SURVEYS
13068.00	90.090	358.290	7168.48	5285.02	5281.77	-388.50	40°04'27.685"N	104°42'41.221"W	0.00	PROJECTION TO BIT

REFERENCE WELLPATH IDENTIFICATION			
Operator	KERR-MCGEE OIL & GAS ONSHORE LP (LAMBERT STATE PLANE COORD)	Slot	SLOT#07 STEWARD 35N-6HZ (441'FSL & 1659'FWL, SEC.07)
Area	COLORADO	Well	STEWARD 35N-6HZ
Field	WELD COUNTY (KERR MCGEE)	Wellbore	STEWARD 35N-6HZ AWB (117'-13068'MD)
Facility	SEC.07-T1N-R65W		

HOLE & CASING SECTIONS - Ref Wellbore: STEWARD 35N-6HZ AWB (117'-13068'MD) Ref Wellpath: STEWARD 35N-6HZ AWP (117'-13068'MD)									
String/Diameter	Start MD [ft]	End MD [ft]	Interval [ft]	Start TVD [ft]	End TVD [ft]	Start N/S [ft]	Start E/W [ft]	End N/S [ft]	End E/W [ft]
13.5in Open Hole	17.00	1608.00	1591.00	17.00	1607.98	0.00	0.00	-3.14	1.63
9.625in Casing Surface	17.00	1596.00	1579.00	17.00	1595.98	0.00	0.00	-3.19	1.60
8.75in Open Hole	1608.00	7719.00	6111.00	1607.98	7174.56	-3.14	1.63	-63.70	-376.36
7in Casing Intermediate	17.00	7709.00	7692.00	17.00	7173.97	0.00	0.00	-73.67	-376.08
6.125in Open Hole	7719.00	13068.00	5349.00	7174.56	7168.48	-63.70	-376.36	5281.77	-388.50

TARGETS								
Name	TVD [ft]	North [ft]	East [ft]	Grid East [US ft]	Grid North [US ft]	Latitude	Longitude	Shape
SEC.06-T1N-R65W SECTION LINES	0.00	0.00	0.00	3221106.82	1265636.47	40°03'35.489"N	104°42'36.223"W	polygon
SEC.07-T1N-R65W SECTION LINES	0.00	0.00	0.00	3221106.82	1265636.47	40°03'35.489"N	104°42'36.223"W	polygon
STEWARD 35N-6HZ BHL ON PLAT (410'FSL & 1317'FWL, SEC.06) REV-1	7168.00	5282.57	-380.62	3220679.17	1270915.22	40°04'27.692"N	104°42'41.119"W	point
STEWARD 35N-6HZ BHL (410'FSL & 1307'FWL, SEC.06) REV-3	7173.00	5282.57	-390.92	3220668.87	1270915.14	40°04'27.692"N	104°42'41.252"W	point
STEWARD 35N-6HZ BHL ON PLAT (410'FSL & 1327'FWL, SEC.06) REV-2	7173.00	5282.57	-370.83	3220688.96	1270915.31	40°04'27.692"N	104°42'40.993"W	point
STEWARD 35N-6HZ LANDBOX	7173.00	0.00	0.00	3221106.82	1265636.47	40°03'35.489"N	104°42'36.223"W	polygon

WELLPATH COMPOSITION - Ref Wellbore: STEWARD 35N-6HZ AWB (117'-13068'MD) Ref Wellpath: STEWARD 35N-6HZ AWP (117'-13068'MD)					
Start MD [ft]	End MD [ft]	Positional Uncertainty Model	Log Name/Comment		Wellbore
17.00	1512.00	Generic gyro - continuous (Standard)	VES GYRO SURVEYS 13.5" <117-1512>		STEWARD 35N-6HZ AWB (117'-13068'MD)
1512.00	7660.00	NaviTrak (MAGCORR,IFR)	BHI MWD+IFR SURVEYS 8.75" <1661-7660>		STEWARD 35N-6HZ AWB (117'-13068'MD)
7660.00	13002.00	NaviTrak (MAGCORR,IFR)	BHI MWD+IFR SURVEYS 6.125" <7771-13002>		STEWARD 35N-6HZ AWB (117'-13068'MD)
13002.00	13068.00	Blind Drilling (std)	Projection to bit		STEWARD 35N-6HZ AWB (117'-13068'MD)

REFERENCE WELLPATH IDENTIFICATION			
Operator	KERR-MCGEE OIL & GAS ONSHORE LP (LAMBERT STATE PLANE COORD)	Slot	SLOT#07 STEWARD 35N-6HZ (441'FSL & 1659'FWL, SEC.07)
Area	COLORADO	Well	STEWARD 35N-6HZ
Field	WELD COUNTY (KERR MCGEE)	Wellbore	STEWARD 35N-6HZ AWB (117'-13068'MD)
Facility	SEC.07-T1N-R65W		

WELLPATH COMMENTS				
MD [ft]	Inclination [°]	Azimuth [°]	TVD [ft]	Comment
117.00	0.425	236.302	117.00	BEGIN GYRO SURVEYS
1512.00	0.521	354.909	1511.98	TIE-INTO GYRO SURVEYS
1661.00	0.250	76.120	1660.98	BEGIN MWD+IFR SURVEYS
7709.00	86.357	358.284	7173.97	7" CASING POINT
13002.00	90.090	358.290	7168.58	LAST BHI MWD+IFR SURVEYS
13068.00	90.090	358.290	7168.48	PROJECTION TO BIT