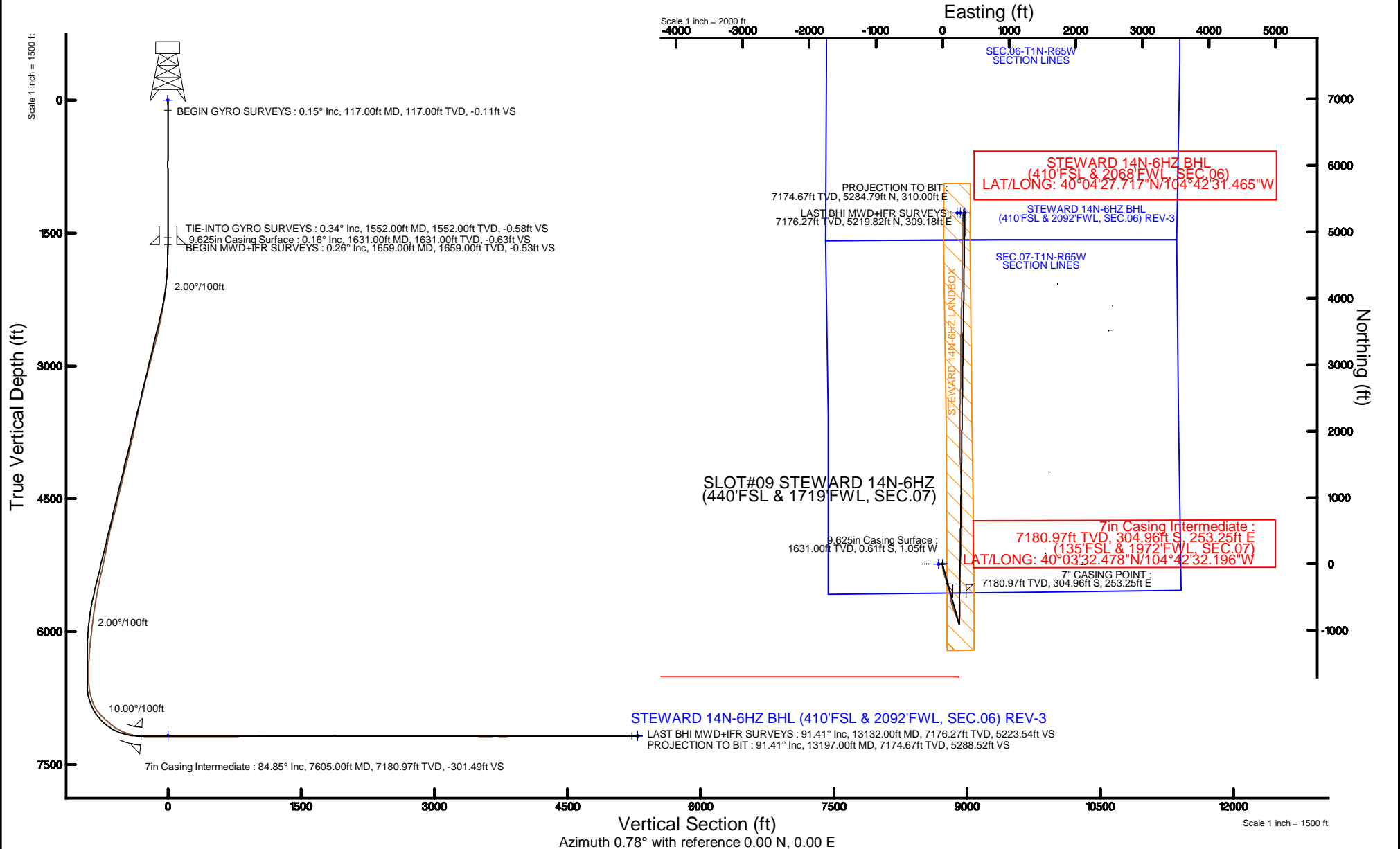


KERR-MCGEE OIL & GAS ONSHORE LP (LAMBERT STATE PLANE COORD)

Location: COLORADO Slot: SLOT#09 STEWARD 14N-6HZ (440'FSL & 1719'FWL, SEC.07)
 Field: WELD COUNTY (KERR MCGEE) Well: STEWARD 14N-6HZ
 Facility: SEC.07-T1N-R65W Wellbore: STEWARD 14N-6HZ PWB

Plot reference wellpath is STEWARD 14N-6HZ (REV-A.0) PWB		Grid System: NAD83 / Lambert Colorado SP, Northern Zone (501), US feet
True vertical depths are referenced to XTREME 8 (17KB) (RKB)	Measured depths are referenced to XTREME 8 (17KB) (RKB)	North Reference: True north
XTREME 8 (17KB) (RKB) to Mean Sea Level: 5018 feet	Mean Sea Level to Mud line (At Slot: SLOT#09 STEWARD 14N-6HZ (440'FSL & 1719'FWL, SEC.07)): 0 feet	Scale: True distance
Coordinates are in feet referenced to Slot		Depths are in feet
		Created by: amarc on 20/Feb/2015



REFERENCE WELLPATH IDENTIFICATION			
Operator	KERR-MCGEE OIL & GAS ONSHORE LP (LAMBERT STATE PLANE COORD)	Slot	SLOT#09 STEWARD 14N-6HZ (440'FSL & 1719'FWL, SEC.07)
Area	COLORADO	Well	STEWARD 14N-6HZ
Field	WELD COUNTY (KERR MCGEE)	Wellbore	STEWARD 14N-6HZ AWB (117'-10180'MD)
Facility	SEC.07-T1N-R65W		

REPORT SETUP INFORMATION			
Projection System	NAD83 / Lambert Colorado SP, Northern Zone (501), US feet	Software System	WellArchitect® 4.1.1
North Reference	True	User	Amarcar
Scale	0.999962	Report Generated	20/Feb/2015 at 15:20
Convergence at slot	0.51° East	Database/Source file	WellArchitectDB/STEWARD_14N-6HZ_AWB__117_-10180_MD_.xml

WELLPATH LOCATION						
	Local coordinates		Grid coordinates		Geographic coordinates	
	North[ft]	East[ft]	Easting[US ft]	Northing[US ft]	Latitude	Longitude
Slot Location	-74.49	-3095.90	3221166.68	1265637.30	40°03'35.492"N	104°42'35.453"W
Facility Reference Pt			3224261.66	1265739.76	40°03'36.230"N	104°41'55.637"W
Field Reference Pt			3197771.84	1268891.29	40°04'09.600"N	104°47'36.000"W

WELLPATH DATUM			
Calculation method	Minimum curvature	XTREME 8 (17'KB) (RKB) to Facility Vertical Datum	5018.00ft
Horizontal Reference Pt	Slot	XTREME 8 (17'KB) (RKB) to Mean Sea Level	5018.00ft
Vertical Reference Pt	XTREME 8 (17'KB) (RKB)	XTREME 8 (17'KB) (RKB) to Mud Line at Slot (SLOT#09 STEWARD 14N-6HZ (440'FSL & 1719'FWL, SEC.07))	5018.00ft
MD Reference Pt	XTREME 8 (17'KB) (RKB)	Section Origin	N 0.00, E 0.00 ft
Field Vertical Reference	Mean Sea Level	Section Azimuth	0.78°

REFERENCE WELLPATH IDENTIFICATION			
Operator	KERR-MCGEE OIL & GAS ONSHORE LP (LAMBERT STATE PLANE COORD)	Slot	SLOT#09 STEWARD 14N-6HZ (440'FSL & 1719'FWL, SEC.07)
Area	COLORADO	Well	STEWARD 14N-6HZ
Field	WELD COUNTY (KERR MCGEE)	Wellbore	STEWARD 14N-6HZ AWB (117'-10180'MD)
Facility	SEC.07-T1N-R65W		

WELLPATH DATA (117 stations) † = interpolated/extrapolated station											
MD [ft]	Inclination [°]	Azimuth [°]	TVD [ft]	Vert Sect [ft]	North [ft]	East [ft]	Latitude	Longitude	DLS [°/100ft]	Comments	
0.00†	0.000	152.653	0.00	0.00	0.00	0.00	40°03'35.492°N	104°42'35.453°W	0.00		
17.00	0.000	152.653	17.00	0.00	0.00	0.00	40°03'35.492°N	104°42'35.453°W	0.00		
117.00	0.146	152.653	117.00	-0.11	-0.11	0.06	40°03'35.491°N	104°42'35.452°W	0.15	BEGIN GYRO SURVEYS	
217.00	0.171	254.798	217.00	-0.27	-0.27	-0.03	40°03'35.489°N	104°42'35.453°W	0.25		
317.00	0.211	171.877	317.00	-0.49	-0.49	-0.14	40°03'35.487°N	104°42'35.455°W	0.25		
417.00	0.208	275.518	417.00	-0.66	-0.65	-0.30	40°03'35.486°N	104°42'35.457°W	0.33		
517.00	0.107	77.962	517.00	-0.62	-0.61	-0.39	40°03'35.486°N	104°42'35.458°W	0.31		
617.00	0.214	211.261	617.00	-0.76	-0.75	-0.39	40°03'35.485°N	104°42'35.458°W	0.30		
717.00	0.034	98.726	717.00	-0.93	-0.92	-0.46	40°03'35.483°N	104°42'35.459°W	0.23		
817.00	0.157	11.909	817.00	-0.79	-0.79	-0.40	40°03'35.484°N	104°42'35.458°W	0.16		
917.00	0.070	217.792	917.00	-0.71	-0.70	-0.41	40°03'35.485°N	104°42'35.458°W	0.22		
1017.00	0.116	58.737	1017.00	-0.70	-0.70	-0.36	40°03'35.485°N	104°42'35.458°W	0.18		
1117.00	0.100	195.062	1117.00	-0.74	-0.73	-0.30	40°03'35.485°N	104°42'35.457°W	0.20		
1217.00	0.149	17.269	1217.00	-0.70	-0.69	-0.28	40°03'35.485°N	104°42'35.457°W	0.25		
1317.00	0.092	270.503	1317.00	-0.57	-0.57	-0.33	40°03'35.486°N	104°42'35.457°W	0.20		
1417.00	0.085	286.842	1417.00	-0.55	-0.54	-0.48	40°03'35.487°N	104°42'35.459°W	0.03		
1517.00	0.151	276.619	1517.00	-0.52	-0.51	-0.68	40°03'35.487°N	104°42'35.462°W	0.07		
1552.00	0.345	233.147	1552.00	-0.58	-0.57	-0.81	40°03'35.486°N	104°42'35.463°W	0.74	TIE-INTO GYRO SURVEYS	
1659.00	0.260	359.550	1659.00	-0.53	-0.52	-1.07	40°03'35.487°N	104°42'35.467°W	0.51	BEGIN MWD+IFR SURVEYS	
1752.00	0.950	193.970	1751.99	-1.07	-1.05	-1.26	40°03'35.482°N	104°42'35.469°W	1.29		
1845.00	2.550	185.730	1844.95	-3.88	-3.86	-1.65	40°03'35.454°N	104°42'35.474°W	1.74		
1937.00	3.810	168.540	1936.81	-8.91	-8.89	-1.25	40°03'35.404°N	104°42'35.469°W	1.70		
2029.00	5.550	176.600	2028.50	-16.33	-16.33	-0.38	40°03'35.331°N	104°42'35.458°W	2.02		
2122.00	6.060	175.980	2121.02	-25.71	-25.72	0.24	40°03'35.238°N	104°42'35.450°W	0.55		
2214.00	7.930	180.400	2212.33	-36.90	-36.91	0.53	40°03'35.127°N	104°42'35.446°W	2.11		
2306.00	9.210	174.380	2303.30	-50.56	-50.58	1.21	40°03'34.992°N	104°42'35.437°W	1.70		
2398.00	10.270	171.020	2393.98	-65.96	-66.01	3.21	40°03'34.840°N	104°42'35.412°W	1.31		
2490.00	11.700	169.210	2484.29	-83.18	-83.27	6.24	40°03'34.669°N	104°42'35.373°W	1.60		
2582.00	12.830	167.570	2574.19	-102.27	-102.41	10.18	40°03'34.480°N	104°42'35.322°W	1.29		
2673.00	14.810	162.740	2662.55	-123.16	-123.39	15.81	40°03'34.273°N	104°42'35.250°W	2.52		
2764.00	14.910	164.070	2750.51	-145.44	-145.75	22.47	40°03'34.052°N	104°42'35.164°W	0.39		
2856.00	14.660	160.990	2839.46	-167.73	-168.14	29.51	40°03'33.830°N	104°42'35.073°W	0.90		
2944.00	14.360	163.710	2924.66	-188.64	-189.15	36.20	40°03'33.623°N	104°42'34.987°W	0.85		
3029.00	15.580	163.210	3006.77	-209.60	-210.19	42.45	40°03'33.415°N	104°42'34.907°W	1.44		
3114.00	14.720	163.430	3088.82	-230.79	-231.47	48.83	40°03'33.205°N	104°42'34.825°W	1.01		
3287.00	14.590	163.980	3256.19	-272.62	-273.48	61.11	40°03'32.789°N	104°42'34.667°W	0.11		
3459.00	14.020	162.610	3422.86	-313.16	-314.19	73.32	40°03'32.387°N	104°42'34.510°W	0.39		
3629.00	13.490	165.180	3587.98	-351.82	-353.01	84.55	40°03'32.004°N	104°42'34.366°W	0.48		
3716.00	11.920	159.450	3672.85	-369.97	-371.23	90.30	40°03'31.823°N	104°42'34.292°W	2.31		
3802.00	12.960	160.790	3756.83	-387.30	-388.66	96.59	40°03'31.651°N	104°42'34.211°W	1.25		
3889.00	14.380	160.650	3841.36	-406.62	-408.06	103.38	40°03'31.459°N	104°42'34.124°W	1.63		
3974.00	13.840	167.680	3923.81	-426.43	-427.95	109.04	40°03'31.263°N	104°42'34.051°W	2.11		
4060.00	12.880	167.300	4007.48	-445.77	-447.35	113.35	40°03'31.071°N	104°42'33.995°W	1.12		
4145.00	14.510	174.250	4090.06	-465.57	-467.19	116.50	40°03'30.875°N	104°42'33.955°W	2.72		
4232.00	12.830	171.780	4174.60	-485.94	-487.60	118.97	40°03'30.673°N	104°42'33.923°W	2.04		

REFERENCE WELLPATH IDENTIFICATION			
Operator	KERR-MCGEE OIL & GAS ONSHORE LP (LAMBERT STATE PLANE COORD)	Slot	SLOT#09 STEWARD 14N-6HZ (440'FSL & 1719'FWL, SEC.07)
Area	COLORADO	Well	STEWARD 14N-6HZ
Field	WELD COUNTY (KERR MCGEE)	Wellbore	STEWARD 14N-6HZ AWP (117'-10180'MD)
Facility	SEC.07-T1N-R65W		

WELLPATH DATA (117 stations) † = interpolated/extrapolated station										
MD [ft]	Inclination [°]	Azimuth [°]	TVD [ft]	Vert Sect [ft]	North [ft]	East [ft]	Latitude	Longitude	DLS ["/100ft]	Comments
4404.00	14.630	172.780	4341.68	-526.31	-528.05	124.43	40°03'30.274"N	104°42'33.853"W	1.06	
4489.00	13.000	172.270	4424.21	-546.40	-548.18	127.06	40°03'30.075"N	104°42'33.819"W	1.92	
4659.00	13.560	166.960	4589.67	-584.66	-586.54	134.13	40°03'29.696"N	104°42'33.728"W	0.79	
4744.00	15.270	162.820	4672.00	-604.99	-606.95	139.69	40°03'29.494"N	104°42'33.657"W	2.35	
4915.00	14.050	160.100	4837.43	-645.83	-647.98	153.41	40°03'29.089"N	104°42'33.480"W	0.82	
5086.00	12.060	158.060	5004.00	-681.73	-684.07	167.15	40°03'28.732"N	104°42'33.303"W	1.19	
5171.00	12.380	156.560	5087.08	-698.23	-700.67	174.09	40°03'28.568"N	104°42'33.214"W	0.53	
5341.00	12.140	161.270	5253.20	-731.70	-734.32	187.08	40°03'28.235"N	104°42'33.047"W	0.60	
5428.00	14.100	160.990	5337.93	-750.30	-753.00	193.47	40°03'28.051"N	104°42'32.965"W	2.25	
5516.00	13.340	161.510	5423.42	-769.97	-772.76	200.18	40°03'27.855"N	104°42'32.879"W	0.87	
5603.00	11.280	160.200	5508.41	-787.41	-790.29	206.25	40°03'27.682"N	104°42'32.801"W	2.39	
5688.00	11.030	156.370	5591.81	-802.60	-805.56	212.32	40°03'27.531"N	104°42'32.722"W	0.92	
5774.00	9.280	156.170	5676.46	-816.39	-819.44	218.42	40°03'27.394"N	104°42'32.644"W	2.04	
5861.00	9.890	157.850	5762.24	-829.65	-832.78	224.07	40°03'27.262"N	104°42'32.571"W	0.77	
5946.00	8.430	157.230	5846.16	-842.09	-845.29	229.24	40°03'27.139"N	104°42'32.505"W	1.72	
6033.00	6.280	157.550	5932.43	-852.31	-855.56	233.52	40°03'27.037"N	104°42'32.450"W	2.47	
6120.00	7.750	166.270	6018.78	-862.36	-865.66	236.73	40°03'26.937"N	104°42'32.409"W	2.08	
6206.00	6.500	164.600	6104.12	-872.65	-875.99	239.40	40°03'26.835"N	104°42'32.374"W	1.47	
6295.00	4.880	159.800	6192.68	-881.02	-884.40	242.05	40°03'26.752"N	104°42'32.340"W	1.90	
6382.00	3.990	154.850	6279.42	-887.20	-890.61	244.61	40°03'26.691"N	104°42'32.307"W	1.11	
6467.00	2.230	137.540	6364.29	-891.06	-894.51	246.98	40°03'26.652"N	104°42'32.277"W	2.32	
6553.00	0.940	130.650	6450.25	-892.73	-896.20	248.65	40°03'26.636"N	104°42'32.255"W	1.51	
6638.00	0.370	98.780	6535.25	-893.22	-896.70	249.45	40°03'26.631"N	104°42'32.245"W	0.77	
6808.00	12.700	0.600	6703.86	-874.53	-878.02	250.19	40°03'26.815"N	104°42'32.235"W	7.50	
6893.00	19.130	3.650	6785.56	-851.25	-854.75	251.17	40°03'27.045"N	104°42'32.223"W	7.63	
6979.00	30.310	7.180	6863.56	-815.50	-819.04	254.80	40°03'27.398"N	104°42'32.176"W	13.11	
7064.00	41.950	2.580	6932.11	-765.61	-769.20	258.77	40°03'27.891"N	104°42'32.125"W	14.05	
7149.00	47.740	0.650	6992.36	-705.70	-709.31	260.41	40°03'28.482"N	104°42'32.104"W	7.00	
7235.00	51.150	358.210	7048.27	-640.40	-643.99	259.72	40°03'29.128"N	104°42'32.113"W	4.51	
7320.00	58.470	357.160	7097.22	-571.08	-574.63	256.89	40°03'29.813"N	104°42'32.149"W	8.67	
7409.00	68.320	359.450	7137.03	-491.68	-495.20	254.61	40°03'30.598"N	104°42'32.179"W	11.30	
7498.00	76.110	358.820	7164.20	-407.04	-410.52	253.32	40°03'31.435"N	104°42'32.195"W	8.78	
7556.00	81.830	0.030	7175.29	-350.15	-353.62	252.75	40°03'31.997"N	104°42'32.202"W	10.07	
7605.00†	84.848	1.148	7180.97	-301.49	-304.96	253.25	40°03'32.478"N	104°42'32.196"W	6.56	7" CASING POINT
7668.00	88.730	2.570	7184.50	-238.61	-242.11	255.30	40°03'33.099"N	104°42'32.170"W	6.56	
7934.00	90.610	2.010	7186.03	27.28	23.66	265.92	40°03'35.726"N	104°42'32.033"W	0.74	
8197.00	90.580	3.070	7183.30	290.14	286.38	277.58	40°03'38.322"N	104°42'31.883"W	0.40	
8460.00	89.560	0.900	7182.98	553.06	549.21	286.69	40°03'40.919"N	104°42'31.766"W	0.91	
8636.00	90.430	0.250	7183.00	729.06	725.20	288.45	40°03'42.659"N	104°42'31.743"W	0.62	
8894.00	91.650	358.420	7178.31	986.92	983.12	285.46	40°03'45.207"N	104°42'31.782"W	0.85	
9065.00	90.670	359.280	7174.85	1157.78	1154.05	282.03	40°03'46.897"N	104°42'31.826"W	0.76	
9235.00	89.810	358.090	7174.14	1327.66	1324.00	278.13	40°03'48.576"N	104°42'31.876"W	0.86	
9407.00	90.580	356.190	7173.55	1499.30	1495.77	269.55	40°03'50.274"N	104°42'31.986"W	1.19	
9578.00	89.470	357.630	7173.48	1669.91	1666.52	260.33	40°03'51.961"N	104°42'32.105"W	1.06	
9665.00	89.160	358.750	7174.52	1756.81	1753.47	257.58	40°03'52.820"N	104°42'32.140"W	1.34	

REFERENCE WELLPATH IDENTIFICATION			
Operator	KERR-MCGEE OIL & GAS ONSHORE LP (LAMBERT STATE PLANE COORD)	Slot	SLOT#09 STEWARD 14N-6HZ (440'FSL & 1719'FWL, SEC.07)
Area	COLORADO	Well	STEWARD 14N-6HZ
Field	WELD COUNTY (KERR MCGEE)	Wellbore	STEWARD 14N-6HZ AWB (117'-10180'MD)
Facility	SEC.07-T1N-R65W		

WELLPATH DATA (117 stations)										
MD [ft]	Inclination [°]	Azimuth [°]	TVD [ft]	Vert Sect [ft]	North [ft]	East [ft]	Latitude	Longitude	DLS [°/100ft]	Comments
9751.00	88.750	0.480	7176.09	1842.77	1839.45	257.00	40°03'53.670"N	104°42'32.147"W	2.07	
9835.00	89.380	359.870	7177.46	1926.76	1923.43	257.26	40°03'54.500"N	104°42'32.144"W	1.04	
9920.00	89.220	0.770	7178.50	2011.75	2008.42	257.74	40°03'55.340"N	104°42'32.138"W	1.08	
10092.00	90.270	0.470	7179.26	2183.74	2180.41	259.60	40°03'57.039"N	104°42'32.114"W	0.63	
10180.00	89.620	0.850	7179.35	2271.74	2268.40	260.61	40°03'57.909"N	104°42'32.101"W	0.86	
10350.00	89.810	1.790	7180.19	2441.73	2438.35	264.53	40°03'59.588"N	104°42'32.051"W	0.56	
10520.00	91.130	1.370	7178.80	2611.70	2608.28	269.21	40°04'01.268"N	104°42'31.990"W	0.81	
10606.00	90.400	1.230	7177.65	2697.69	2694.25	271.16	40°04'02.117"N	104°42'31.965"W	0.86	
10691.00	89.290	0.440	7177.88	2782.69	2779.24	272.40	40°04'02.957"N	104°42'31.949"W	1.60	
10863.00	89.560	0.650	7179.61	2954.68	2951.22	274.04	40°04'04.657"N	104°42'31.928"W	0.20	
11039.00	90.520	359.920	7179.48	3130.67	3127.22	274.91	40°04'06.396"N	104°42'31.917"W	0.69	
11124.00	90.330	0.600	7178.85	3215.66	3212.21	275.30	40°04'07.236"N	104°42'31.912"W	0.83	
11209.00	89.410	0.260	7179.04	3300.66	3297.21	275.94	40°04'08.076"N	104°42'31.904"W	1.15	
11297.00	88.670	0.000	7180.52	3388.64	3385.20	276.14	40°04'08.945"N	104°42'31.901"W	0.89	
11382.00	89.470	1.110	7181.90	3473.63	3470.18	276.96	40°04'09.785"N	104°42'31.891"W	1.61	
11552.00	90.330	0.680	7182.20	3643.62	3640.16	279.62	40°04'11.465"N	104°42'31.856"W	0.57	
11637.00	89.630	1.050	7182.22	3728.62	3725.14	280.90	40°04'12.305"N	104°42'31.840"W	0.93	
11722.00	90.430	1.070	7182.18	3813.62	3810.13	282.47	40°04'13.144"N	104°42'31.820"W	0.94	
11807.00	90.520	1.740	7181.48	3898.61	3895.10	284.56	40°04'13.984"N	104°42'31.793"W	0.80	
11893.00	89.530	1.570	7181.44	3984.60	3981.06	287.04	40°04'14.834"N	104°42'31.761"W	1.17	
12067.00	90.460	1.180	7181.45	4158.59	4155.01	291.22	40°04'16.553"N	104°42'31.707"W	0.58	
12238.00	90.210	0.900	7180.45	4329.59	4325.98	294.32	40°04'18.242"N	104°42'31.667"W	0.22	
12410.00	90.370	0.790	7179.58	4501.58	4497.96	296.86	40°04'19.942"N	104°42'31.634"W	0.11	
12583.00	89.810	0.780	7179.31	4674.58	4670.94	299.23	40°04'21.651"N	104°42'31.604"W	0.32	
12753.00	89.720	1.340	7180.01	4844.58	4840.91	302.37	40°04'23.331"N	104°42'31.563"W	0.33	
13132.00	91.410	0.720	7176.27	5223.54	5219.82	309.18	40°04'27.075"N	104°42'31.476"W	0.47	LAST BHI MWD+IFR SURVEYS
13197.00	91.410	0.720	7174.67	5288.52	5284.79	310.00	40°04'27.717"N	104°42'31.465"W	0.00	PROJECTION TO BIT

HOLE & CASING SECTIONS - Ref Wellbore: STEWARD 14N-6HZ AWB (117'-10180'MD) Ref Wellpath: STEWARD 14N-6HZ AWP (117'-13197'MD)									
String/Diameter	Start MD [ft]	End MD [ft]	Interval [ft]	Start TVD [ft]	End TVD [ft]	Start N/S [ft]	Start E/W [ft]	End N/S [ft]	End E/W [ft]
13.5in Open Hole	17.00	1641.00	1624.00	17.00	1641.00	0.00	0.00	-0.59	-1.06
9.625in Casing Surface	17.00	1631.00	1614.00	17.00	1631.00	0.00	0.00	-0.61	-1.05
8.75in Open Hole	1641.00	7615.00	5974.00	1641.00	7181.82	-0.59	-1.06	-295.00	253.47
7in Casing Intermediate	17.00	7605.00	7588.00	17.00	7180.97	0.00	0.00	-304.96	253.25
6.125in Open Hole	7615.00	13197.00	5582.00	7181.82	7174.67	-295.00	253.47	5284.79	310.00

REFERENCE WELLPATH IDENTIFICATION			
Operator	KERR-MCGEE OIL & GAS ONSHORE LP (LAMBERT STATE PLANE COORD)	Slot	SLOT#09 STEWARD 14N-6HZ (440'FSL & 1719'FWL, SEC.07)
Area	COLORADO	Well	STEWARD 14N-6HZ
Field	WELD COUNTY (KERR MCGEE)	Wellbore	STEWARD 14N-6HZ AWB (117'-10180'MD)
Facility	SEC.07-T1N-R65W		

TARGETS								
Name	TVD [ft]	North [ft]	East [ft]	Grid East [US ft]	Grid North [US ft]	Latitude	Longitude	Shape
SEC.06-T1N-R65W SECTION LINES	0.00	-0.30	-59.87	3221106.82	1265636.47	40°03'35.489"N	104°42'36.223"W	polygon
SEC.07-T1N-R65W SECTION LINES	0.00	-0.30	-59.87	3221106.82	1265636.47	40°03'35.489"N	104°42'36.223"W	polygon
STEWARD 14N-6HZ LANDBOX	7173.00	0.00	0.00	3221166.68	1265637.30	40°03'35.492"N	104°42'35.453"W	polygon
STEWARD 14N-6HZ BHL ON PLAT (410'FSL & 1977'FWL, SEC.06) REV-1	7173.00	5284.81	219.71	3221339.28	1270923.65	40°04'27.718"N	104°42'32.627"W	point
STEWARD 14N-6HZ BHL ON PLAT (410'FSL & 2092'FWL, SEC.06) REV-3	7178.00	5285.17	334.52	3221454.08	1270925.04	40°04'27.721"N	104°42'31.150"W	point
STEWARD 14N-6HZ BHL ON PLAT (410'FSL & 2027'FWL, SEC.06) REV-2	7178.00	5285.17	269.52	3221389.09	1270924.46	40°04'27.721"N	104°42'31.986"W	point

WELLPATH COMPOSITION - Ref Wellbore: STEWARD 14N-6HZ AWB (117'-10180'MD) Ref Wellpath: STEWARD 14N-6HZ AWP (117'-13197'MD)				
Start MD [ft]	End MD [ft]	Positional Uncertainty Model	Log Name/Comment	Wellbore
17.00	1552.00	Generic gyro - continuous (Standard)	VES GYRO SURVEYS 13.5" <117-1552>	STEWARD 14N-6HZ AWB (117'-10180'MD)
1552.00	7556.00	NaviTrak (MAGCORR,IFR)	BHI MWD+IFR SURVEYS 8.75" <1659-7556>	STEWARD 14N-6HZ AWB (117'-10180'MD)
7556.00	13132.00	NaviTrak (MAGCORR,IFR)	BHI MWD+IFR SURVEYS 6.125" <7668-13132>	STEWARD 14N-6HZ AWB (117'-10180'MD)
13132.00	13197.00	Blind Drilling (std)	Projection to bit	STEWARD 14N-6HZ AWB (117'-10180'MD)

REFERENCE WELLPATH IDENTIFICATION

Operator	KERR-MCGEE OIL & GAS ONSHORE LP (LAMBERT STATE PLANE COORD)	Slot	SLOT#09 STEWARD 14N-6HZ (440'FSL & 1719'FWL, SEC.07)
Area	COLORADO	Well	STEWARD 14N-6HZ
Field	WELD COUNTY (KERR MCGEE)	Wellbore	STEWARD 14N-6HZ AWB (117'-10180'MD)
Facility	SEC.07-T1N-R65W		

WELLPATH COMMENTS

MD [ft]	Inclination [°]	Azimuth [°]	TVD [ft]	Comment
117.00	0.146	152.653	117.00	BEGIN GYRO SURVEYS
1552.00	0.345	233.147	1552.00	TIE-INTO GYRO SURVEYS
1659.00	0.260	359.550	1659.00	BEGIN MWD+IFR SURVEYS
7605.00	84.848	1.148	7180.97	7" CASING POINT
13132.00	91.410	0.720	7176.27	LAST BHI MWD+IFR SURVEYS
13197.00	91.410	0.720	7174.67	PROJECTION TO BIT