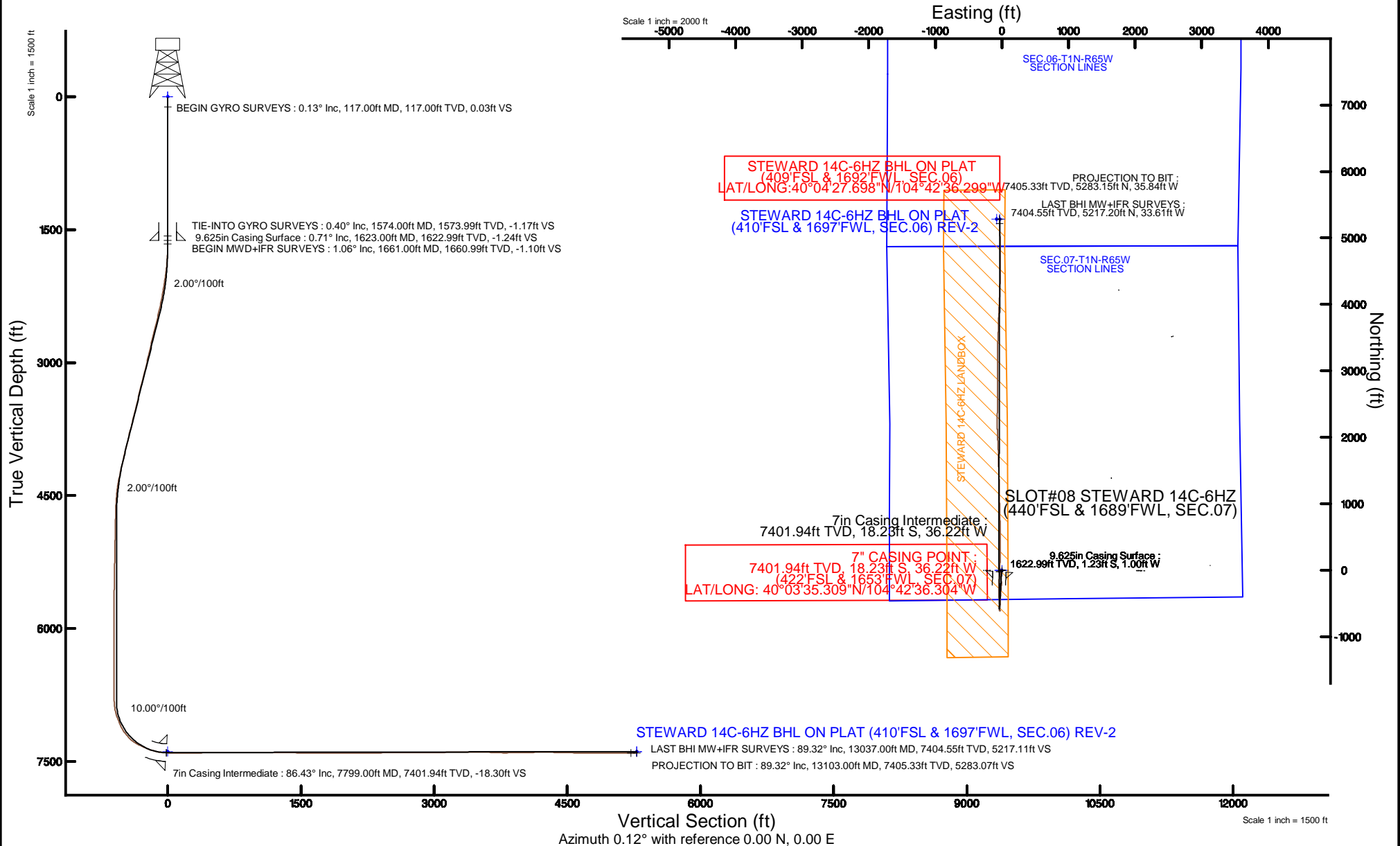


KERR-MCGEE OIL & GAS ONSHORE LP (LAMBERT STATE PLANE COORD)

Location: COLORADO Slot: SLOT#08 STEWARD 14C-6HZ (440'FSL & 1689'FWL, SEC.07)
 Field: WELD COUNTY (KERR MCGEE) Well: STEWARD 14C-6HZ
 Facility: SEC.07-T1N-R65W Wellbore: STEWARD 14C-6HZ PWB

Plot reference wellpath is STEWARD 14C-6HZ (REV-A.0) PWB		Grid System: NAD83 / Lambert Colorado SP, Northern Zone (501), US feet
True vertical depths are referenced to XTREME 8 (17KB) (RKB)		North Reference: True north
Measured depths are referenced to XTREME 8 (17KB) (RKB)		Scale: True distance
XTREME 8 (17KB) (RKB) to Mean Sea Level: 5018 feet		Depths are in feet
Mean Sea Level to Mud line (At Slot: SLOT#08 STEWARD 14C-6HZ (440'FSL & 1689'FWL, SEC.07)): 0 feet		Created by: amarc on 20/Feb/2015
Coordinates are in feet referenced to Slot		



REFERENCE WELLPATH IDENTIFICATION			
Operator	KERR-MCGEE OIL & GAS ONSHORE LP (LAMBERT STATE PLANE COORD)	Slot	SLOT#08 STEWARD 14C-6HZ (440'FSL & 1689'FWL, SEC.07)
Area	COLORADO	Well	STEWARD 14C-6HZ
Field	WELD COUNTY (KERR MCGEE)	Wellbore	STEWARD 14C-6HZ AWB (117'-13103'MD)
Facility	SEC.07-T1N-R65W		

REPORT SETUP INFORMATION			
Projection System	NAD83 / Lambert Colorado SP, Northern Zone (501), US feet	Software System	WellArchitect® 4.1.1
North Reference	True	User	Amarcar
Scale	0.999962	Report Generated	20/Feb/2015 at 14:50
Convergence at slot	0.51° East	Database/Source file	WellArchitectDB/STEWARD_14C-6HZ_AWB__117_-13103_MD_.xml

WELLPATH LOCATION						
	Local coordinates		Grid coordinates		Geographic coordinates	
	North[ft]	East[ft]	Easting[US ft]	Northing[US ft]	Latitude	Longitude
Slot Location	-74.79	-3125.84	3221136.75	1265636.73	40°03'35.489"N	104°42'35.838"W
Facility Reference Pt			3224261.66	1265739.76	40°03'36.230"N	104°41'55.637"W
Field Reference Pt			3197771.84	1268891.29	40°04'09.600"N	104°47'36.000"W

WELLPATH DATUM			
Calculation method	Minimum curvature	XTREME 8 (17'KB) (RKB) to Facility Vertical Datum	5018.00ft
Horizontal Reference Pt	Slot	XTREME 8 (17'KB) (RKB) to Mean Sea Level	5018.00ft
Vertical Reference Pt	XTREME 8 (17'KB) (RKB)	XTREME 8 (17'KB) (RKB) to Mud Line at Slot (SLOT#08 STEWARD 14C-6HZ (440'FSL & 1689'FWL, SEC.07))	5018.00ft
MD Reference Pt	XTREME 8 (17'KB) (RKB)	Section Origin	N 0.00, E 0.00 ft
Field Vertical Reference	Mean Sea Level	Section Azimuth	0.12°

REFERENCE WELLPATH IDENTIFICATION			
Operator	KERR-MCGEE OIL & GAS ONSHORE LP (LAMBERT STATE PLANE COORD)	Slot	SLOT#08 STEWARD 14C-6HZ (440'FSL & 1689'FWL, SEC.07)
Area	COLORADO	Well	STEWARD 14C-6HZ
Field	WELD COUNTY (KERR MCGEE)	Wellbore	STEWARD 14C-6HZ AWB (117'-13103'MD)
Facility	SEC.07-T1N-R65W		

WELLPATH DATA (118 stations) † = interpolated/extrapolated station										
MD [ft]	Inclination [°]	Azimuth [°]	TVD [ft]	Vert Sect [ft]	North [ft]	East [ft]	Latitude	Longitude	DLS [°/100ft]	Comments
0.00†	0.000	283.726	0.00	0.00	0.00	0.00	40°03'35.489"N	104°42'35.838"W	0.00	
17.00	0.000	283.726	17.00	0.00	0.00	0.00	40°03'35.489"N	104°42'35.838"W	0.00	
117.00	0.131	283.726	117.00	0.03	0.03	-0.11	40°03'35.489"N	104°42'35.839"W	0.13	BEGIN GYRO SURVEYS
217.00	0.234	222.362	217.00	-0.10	-0.10	-0.36	40°03'35.488"N	104°42'35.843"W	0.21	
317.00	0.102	75.736	317.00	-0.23	-0.23	-0.41	40°03'35.487"N	104°42'35.843"W	0.32	
417.00	0.191	212.124	417.00	-0.35	-0.34	-0.41	40°03'35.486"N	104°42'35.843"W	0.27	
517.00	0.192	80.594	517.00	-0.46	-0.46	-0.34	40°03'35.484"N	104°42'35.842"W	0.35	
617.00	0.104	358.790	617.00	-0.34	-0.34	-0.17	40°03'35.486"N	104°42'35.840"W	0.20	
717.00	0.188	96.519	717.00	-0.27	-0.27	-0.01	40°03'35.486"N	104°42'35.838"W	0.23	
817.00	0.144	64.484	817.00	-0.23	-0.23	0.26	40°03'35.487"N	104°42'35.835"W	0.10	
917.00	0.035	157.199	917.00	-0.21	-0.21	0.39	40°03'35.487"N	104°42'35.833"W	0.15	
1017.00	0.106	171.290	1017.00	-0.33	-0.33	0.42	40°03'35.486"N	104°42'35.833"W	0.07	
1117.00	0.193	143.802	1117.00	-0.55	-0.55	0.53	40°03'35.484"N	104°42'35.831"W	0.11	
1217.00	0.218	260.041	1217.00	-0.72	-0.72	0.44	40°03'35.482"N	104°42'35.832"W	0.35	
1317.00	0.181	289.348	1317.00	-0.70	-0.70	0.10	40°03'35.482"N	104°42'35.837"W	0.11	
1417.00	0.133	269.520	1417.00	-0.65	-0.65	-0.16	40°03'35.483"N	104°42'35.840"W	0.07	
1517.00	0.301	197.265	1517.00	-0.90	-0.90	-0.35	40°03'35.480"N	104°42'35.843"W	0.29	
1574.00	0.403	233.660	1573.99	-1.17	-1.17	-0.56	40°03'35.477"N	104°42'35.845"W	0.42	TIE-INTO GYRO SURVEYS
1661.00	1.060	287.830	1660.99	-1.10	-1.10	-1.57	40°03'35.478"N	104°42'35.858"W	1.02	BEGIN MWD+IFR SURVEYS
1753.00	2.620	229.240	1752.94	-2.22	-2.21	-3.98	40°03'35.467"N	104°42'35.889"W	2.45	
1845.00	4.520	204.520	1844.77	-6.90	-6.88	-7.07	40°03'35.421"N	104°42'35.929"W	2.61	
1937.00	6.370	195.650	1936.35	-15.12	-15.10	-9.96	40°03'35.340"N	104°42'35.966"W	2.20	
2029.00	8.590	195.210	2027.56	-26.67	-26.64	-13.14	40°03'35.226"N	104°42'36.007"W	2.41	
2121.00	8.720	185.970	2118.52	-40.24	-40.21	-15.66	40°03'35.092"N	104°42'36.039"W	1.52	
2213.00	9.990	181.270	2209.29	-55.16	-55.13	-16.57	40°03'34.944"N	104°42'36.051"W	1.61	
2304.00	11.290	177.940	2298.73	-71.95	-71.92	-16.42	40°03'34.778"N	104°42'36.049"W	1.58	
2396.00	12.210	175.690	2388.80	-90.65	-90.62	-15.37	40°03'34.593"N	104°42'36.036"W	1.12	
2488.00	13.250	177.140	2478.54	-110.88	-110.85	-14.11	40°03'34.394"N	104°42'36.019"W	1.18	
2580.00	13.430	173.700	2568.06	-132.03	-132.00	-12.41	40°03'34.185"N	104°42'35.998"W	0.88	
2672.00	14.630	173.950	2657.31	-154.20	-154.18	-10.01	40°03'33.965"N	104°42'35.967"W	1.31	
2763.00	13.360	170.890	2745.61	-176.00	-175.99	-7.14	40°03'33.750"N	104°42'35.930"W	1.61	
2855.00	12.920	178.420	2835.21	-196.78	-196.77	-5.17	40°03'33.545"N	104°42'35.904"W	1.92	
2947.00	12.800	188.490	2924.91	-217.14	-217.13	-6.39	40°03'33.343"N	104°42'35.920"W	2.44	
3038.00	13.300	189.600	3013.56	-237.44	-237.42	-9.62	40°03'33.143"N	104°42'35.962"W	0.61	
3130.00	13.670	187.600	3103.02	-258.66	-258.63	-12.83	40°03'32.933"N	104°42'36.003"W	0.65	
3221.00	14.280	183.680	3191.33	-280.52	-280.49	-14.97	40°03'32.717"N	104°42'36.031"W	1.24	
3312.00	14.680	180.750	3279.44	-303.25	-303.22	-15.84	40°03'32.493"N	104°42'36.042"W	0.92	
3397.00	13.100	180.020	3361.95	-323.66	-323.62	-15.99	40°03'32.291"N	104°42'36.044"W	1.87	
3482.00	12.830	183.990	3444.79	-342.70	-342.67	-16.65	40°03'32.103"N	104°42'36.052"W	1.09	
3567.00	13.570	186.630	3527.54	-362.03	-361.99	-18.45	40°03'31.912"N	104°42'36.075"W	1.12	
3652.00	14.030	187.170	3610.09	-382.16	-382.12	-20.89	40°03'31.713"N	104°42'36.107"W	0.56	
3739.00	14.300	184.740	3694.44	-403.34	-403.29	-23.10	40°03'31.504"N	104°42'36.135"W	0.75	
3825.00	14.970	183.280	3777.65	-425.01	-424.96	-24.61	40°03'31.289"N	104°42'36.154"W	0.89	
3910.00	12.630	184.060	3860.19	-445.25	-445.20	-25.89	40°03'31.089"N	104°42'36.171"W	2.76	
3997.00	13.730	180.290	3944.90	-465.06	-465.01	-26.62	40°03'30.894"N	104°42'36.180"W	1.60	

REFERENCE WELLPATH IDENTIFICATION			
Operator	KERR-MCGEE OIL & GAS ONSHORE LP (LAMBERT STATE PLANE COORD)	Slot	SLOT#08 STEWARD 14C-6HZ (440'FSL & 1689'FWL, SEC.07)
Area	COLORADO	Well	STEWARD 14C-6HZ
Field	WELD COUNTY (KERR MCGEE)	Wellbore	STEWARD 14C-6HZ AWP (117'-13103'MD)
Facility	SEC.07-T1N-R65W		

WELLPATH DATA (118 stations) † = interpolated/extrapolated station										
MD [ft]	Inclination [°]	Azimuth [°]	TVD [ft]	Vert Sect [ft]	North [ft]	East [ft]	Latitude	Longitude	DLS ["/100ft]	Comments
4082.00	13.450	179.310	4027.52	-485.04	-484.98	-26.55	40°03'30.696"N	104°42'36.179"W	0.43	
4170.00	13.560	185.530	4113.09	-505.54	-505.48	-27.42	40°03'30.494"N	104°42'36.191"W	1.65	
4255.00	12.350	186.290	4195.93	-524.50	-524.44	-29.38	40°03'30.306"N	104°42'36.216"W	1.44	
4340.00	11.740	187.860	4279.06	-542.11	-542.04	-31.56	40°03'30.132"N	104°42'36.244"W	0.81	
4425.00	9.870	190.020	4362.55	-557.85	-557.78	-34.01	40°03'29.977"N	104°42'36.275"W	2.25	
4514.00	6.960	183.450	4450.58	-570.75	-570.68	-35.66	40°03'29.849"N	104°42'36.297"W	3.44	
4600.00	4.180	171.240	4536.17	-579.05	-578.98	-35.50	40°03'29.767"N	104°42'36.295"W	3.50	
4687.00	1.910	155.400	4623.04	-583.50	-583.43	-34.41	40°03'29.723"N	104°42'36.281"W	2.76	
4772.00	2.070	164.700	4707.99	-586.27	-586.20	-33.42	40°03'29.696"N	104°42'36.268"W	0.42	
4857.00	1.130	212.890	4792.96	-588.46	-588.39	-33.47	40°03'29.674"N	104°42'36.268"W	1.84	
4943.00	1.220	187.390	4878.94	-590.08	-590.01	-34.04	40°03'29.658"N	104°42'36.276"W	0.61	
5371.00	1.170	156.720	5306.85	-598.61	-598.54	-32.90	40°03'29.574"N	104°42'36.261"W	0.15	
5798.00	0.870	134.390	5733.79	-604.87	-604.81	-28.86	40°03'29.512"N	104°42'36.209"W	0.12	
6053.00	0.310	205.140	5988.78	-606.85	-606.79	-27.77	40°03'29.493"N	104°42'36.195"W	0.32	
6485.00	1.640	293.130	6420.71	-605.49	-605.42	-33.95	40°03'29.506"N	104°42'36.275"W	0.38	
6572.00	1.580	291.330	6507.68	-604.57	-604.49	-36.22	40°03'29.515"N	104°42'36.304"W	0.09	
6658.00	0.460	308.350	6593.67	-603.93	-603.85	-37.59	40°03'29.522"N	104°42'36.321"W	1.33	
6830.00	0.220	262.780	6765.66	-603.54	-603.46	-38.46	40°03'29.525"N	104°42'36.333"W	0.20	
6918.00	3.290	354.480	6853.61	-601.05	-600.97	-38.87	40°03'29.550"N	104°42'36.338"W	3.75	
6962.00	9.800	9.130	6897.31	-596.09	-596.01	-38.40	40°03'29.599"N	104°42'36.332"W	15.16	
7005.00	13.980	10.500	6939.37	-587.36	-587.28	-36.87	40°03'29.685"N	104°42'36.312"W	9.74	
7090.00	20.690	4.700	7020.47	-562.26	-562.19	-33.77	40°03'29.933"N	104°42'36.272"W	8.14	
7176.00	25.810	356.590	7099.48	-528.40	-528.33	-33.63	40°03'30.268"N	104°42'36.271"W	7.01	
7263.00	34.580	354.800	7174.61	-484.83	-484.75	-37.00	40°03'30.699"N	104°42'36.314"W	10.13	
7348.00	45.400	356.240	7239.63	-430.46	-430.37	-41.19	40°03'31.236"N	104°42'36.368"W	12.78	
7434.00	59.420	0.580	7291.98	-362.53	-362.44	-42.83	40°03'31.907"N	104°42'36.389"W	16.78	
7519.00	65.860	0.440	7331.02	-287.08	-287.00	-42.16	40°03'32.653"N	104°42'36.380"W	7.58	
7604.00	69.460	359.440	7363.33	-208.48	-208.39	-42.25	40°03'33.430"N	104°42'36.381"W	4.37	
7690.00	77.310	1.330	7387.90	-126.14	-126.05	-41.67	40°03'34.243"N	104°42'36.374"W	9.37	
7751.00	83.860	3.470	7397.88	-66.05	-65.96	-39.14	40°03'34.837"N	104°42'36.341"W	11.28	
7799.00†	86.430	3.524	7401.94	-18.30	-18.23	-36.22	40°03'35.309"N	104°42'36.304"W	5.36	7" CASING POINT
7858.00	89.590	3.590	7403.99	40.55	40.62	-32.57	40°03'35.890"N	104°42'36.257"W	5.36	
7945.00	89.370	2.730	7404.78	127.42	127.48	-27.77	40°03'36.749"N	104°42'36.195"W	1.02	
8034.00	89.780	0.380	7405.44	216.38	216.44	-25.36	40°03'37.628"N	104°42'36.164"W	2.68	
8123.00	91.510	0.260	7404.43	305.37	305.43	-24.86	40°03'38.507"N	104°42'36.158"W	1.95	
8212.00	91.790	0.670	7401.87	394.33	394.39	-24.14	40°03'39.386"N	104°42'36.148"W	0.56	
8301.00	90.920	359.470	7399.77	483.31	483.36	-24.03	40°03'40.266"N	104°42'36.147"W	1.67	
8387.00	89.440	359.100	7399.50	569.30	569.35	-25.10	40°03'41.115"N	104°42'36.161"W	1.77	
8472.00	88.790	358.340	7400.81	654.26	654.32	-27.00	40°03'41.955"N	104°42'36.185"W	1.18	
8561.00	90.000	359.740	7401.75	743.23	743.30	-28.49	40°03'42.834"N	104°42'36.204"W	2.08	
8651.00	89.960	358.780	7401.78	833.22	833.29	-29.65	40°03'43.724"N	104°42'36.219"W	1.07	
8740.00	90.000	357.930	7401.81	922.18	922.25	-32.21	40°03'44.603"N	104°42'36.252"W	0.96	
8827.00	89.960	358.160	7401.84	1009.12	1009.20	-35.18	40°03'45.462"N	104°42'36.290"W	0.27	
8912.00	90.980	358.910	7401.14	1094.09	1094.17	-37.35	40°03'46.302"N	104°42'36.318"W	1.49	
8999.00	90.520	0.020	7400.01	1181.07	1181.15	-38.16	40°03'47.161"N	104°42'36.329"W	1.38	

REFERENCE WELLPATH IDENTIFICATION			
Operator	KERR-MCGEE OIL & GAS ONSHORE LP (LAMBERT STATE PLANE COORD)	Slot	SLOT#08 STEWARD 14C-6HZ (440'FSL & 1689'FWL, SEC.07)
Area	COLORADO	Well	STEWARD 14C-6HZ
Field	WELD COUNTY (KERR MCGEE)	Wellbore	STEWARD 14C-6HZ AWB (117'-13103'MD)
Facility	SEC.07-T1N-R65W		

WELLPATH DATA (118 stations)										
MD [ft]	Inclination [°]	Azimuth [°]	TVD [ft]	Vert Sect [ft]	North [ft]	East [ft]	Latitude	Longitude	DLS [°/100ft]	Comments
9085.00	90.150	359.090	7399.50	1267.06	1267.15	-38.83	40°03'48.011"N	104°42'36.337"W	1.16	
9170.00	88.990	357.990	7400.14	1352.03	1352.12	-41.00	40°03'48.851"N	104°42'36.365"W	1.88	
9255.00	88.360	357.140	7402.11	1436.92	1437.02	-44.61	40°03'49.690"N	104°42'36.412"W	1.24	
9340.00	89.320	358.590	7403.83	1521.83	1521.94	-47.77	40°03'50.529"N	104°42'36.452"W	2.05	
9426.00	89.840	358.100	7404.46	1607.79	1607.90	-50.25	40°03'51.379"N	104°42'36.484"W	0.83	
9511.00	90.000	359.160	7404.58	1692.76	1692.87	-52.29	40°03'52.218"N	104°42'36.511"W	1.26	
9683.00	90.520	357.220	7403.80	1864.65	1864.78	-57.72	40°03'53.917"N	104°42'36.580"W	1.17	
9769.00	89.780	357.690	7403.57	1950.55	1950.69	-61.54	40°03'54.766"N	104°42'36.629"W	1.02	
9941.00	90.330	357.630	7403.41	2122.39	2122.54	-68.56	40°03'56.464"N	104°42'36.720"W	0.32	
10028.00	89.750	0.730	7403.35	2209.37	2209.53	-69.81	40°03'57.324"N	104°42'36.736"W	3.63	
10286.00	91.140	359.910	7401.34	2467.35	2467.50	-68.36	40°03'59.873"N	104°42'36.717"W	0.63	
10458.00	89.510	0.350	7400.37	2639.35	2639.50	-67.97	40°04'01.573"N	104°42'36.712"W	0.98	
10714.00	91.230	0.630	7398.71	2895.32	2895.47	-65.79	40°04'04.103"N	104°42'36.684"W	0.68	
10884.00	89.600	358.770	7397.48	3065.30	3065.45	-66.68	40°04'05.782"N	104°42'36.696"W	1.45	
10969.00	91.070	359.320	7396.98	3150.28	3150.43	-68.09	40°04'06.622"N	104°42'36.714"W	1.85	
11146.00	90.760	1.650	7394.16	3327.24	3327.39	-66.59	40°04'08.371"N	104°42'36.695"W	1.33	
11318.00	89.320	3.080	7394.04	3499.10	3499.24	-59.50	40°04'10.069"N	104°42'36.603"W	1.18	
11491.00	87.130	1.570	7399.40	3671.88	3672.00	-52.48	40°04'11.776"N	104°42'36.513"W	1.54	
11576.00	89.220	1.810	7402.10	3756.80	3756.91	-49.98	40°04'12.616"N	104°42'36.481"W	2.47	
11746.00	92.160	2.240	7400.06	3926.67	3926.77	-43.97	40°04'14.294"N	104°42'36.404"W	1.75	
11831.00	90.400	3.040	7398.16	4011.57	4011.66	-40.06	40°04'15.133"N	104°42'36.353"W	2.27	
12001.00	90.490	1.970	7396.84	4181.41	4181.49	-32.63	40°04'16.811"N	104°42'36.258"W	0.63	
12172.00	89.070	1.420	7397.49	4352.34	4352.41	-27.57	40°04'18.500"N	104°42'36.193"W	0.89	
12346.00	88.320	0.690	7401.46	4526.27	4526.33	-24.37	40°04'20.219"N	104°42'36.151"W	0.60	
12431.00	89.100	359.370	7403.37	4611.24	4611.31	-24.32	40°04'21.059"N	104°42'36.151"W	1.80	
12604.00	90.520	359.810	7403.94	4784.23	4784.30	-25.56	40°04'22.768"N	104°42'36.167"W	0.86	
13037.00	89.320	358.060	7404.55	5217.11	5217.20	-33.61	40°04'27.046"N	104°42'36.270"W	0.49	LAST BHI MW+IFR SURVEYS
13103.00	89.320	358.060	7405.33	5283.07	5283.15	-35.84	40°04'27.698"N	104°42'36.299"W	0.00	PROJECTION TO BIT

HOLE & CASING SECTIONS - Ref Wellbore: STEWARD 14C-6HZ AWB (117'-13103'MD) Ref Wellpath: STEWARD 14C-6HZ AWP (117'-13103'MD)									
String/Diameter	Start MD [ft]	End MD [ft]	Interval [ft]	Start TVD [ft]	End TVD [ft]	Start N/S [ft]	Start E/W [ft]	End N/S [ft]	End E/W [ft]
13.5in Open Hole	17.00	1633.00	1616.00	17.00	1632.99	0.00	0.00	-1.21	-1.13
9.625in Casing Surface	17.00	1623.00	1606.00	17.00	1622.99	0.00	0.00	-1.23	-1.00
8.75in Open Hole	1633.00	7809.00	6176.00	1632.99	7402.51	-1.21	-1.13	-8.26	-35.61
7in Casing Intermediate	17.00	7799.00	7782.00	17.00	7401.94	0.00	0.00	-18.23	-36.22
6.125in Open Hole	7809.00	13103.00	5294.00	7402.51	7405.33	-8.26	-35.61	5283.15	-35.84

REFERENCE WELLPATH IDENTIFICATION			
Operator	KERR-MCGEE OIL & GAS ONSHORE LP (LAMBERT STATE PLANE COORD)	Slot	SLOT#08 STEWARD 14C-6HZ (440'FSL & 1689'FWL, SEC.07)
Area	COLORADO	Well	STEWARD 14C-6HZ
Field	WELD COUNTY (KERR MCGEE)	Wellbore	STEWARD 14C-6HZ AWB (117'-13103'MD)
Facility	SEC.07-T1N-R65W		

TARGETS								
Name	TVD [ft]	North [ft]	East [ft]	Grid East [US ft]	Grid North [US ft]	Latitude	Longitude	Shape
SEC.06-T1N-R65W SECTION LINES	0.00	0.00	-29.94	3221106.82	1265636.47	40°03'35.489"N	104°42'36.223"W	polygon
SEC.07-T1N-R65W SECTION LINES	0.00	0.00	-29.94	3221106.82	1265636.47	40°03'35.489"N	104°42'36.223"W	polygon
STEWARD 14C-6HZ BHL ON PLAT (410'FSL & 1647'FWL, SEC.06) REV-1	7388.00	5284.02	-80.32	3221009.36	1270919.62	40°04'27.707"N	104°42'36.871"W	point
STEWARD 14C-6HZ BHL ON PLAT (410'FSL & 1697'FWL, SEC.06) REV-2	7388.00	5284.02	-30.78	3221058.89	1270920.06	40°04'27.707"N	104°42'36.234"W	point
STEWARD 14C-6HZ LANDBOX	7388.00	0.00	0.00	3221136.75	1265636.73	40°03'35.489"N	104°42'35.838"W	polygon

WELLPATH COMPOSITION - Ref Wellbore: STEWARD 14C-6HZ AWB (117'-13103'MD) Ref Wellpath: STEWARD 14C-6HZ AWP (117'-13103'MD)				
Start MD [ft]	End MD [ft]	Positional Uncertainty Model	Log Name/Comment	Wellbore
17.00	1574.00	Generic gyro - continuous (Standard)	VES GYRO SURVEYS 13.5" <117-1574>	STEWARD 14C-6HZ AWB (117'-13103'MD)
1574.00	7751.00	NaviTrak (MAGCORR,IFR)	BHI MWD+IFR SURVEYS 8.75" <1661-7751>	STEWARD 14C-6HZ AWB (117'-13103'MD)
7751.00	13037.00	NaviTrak (MAGCORR,IFR)	BHI MWD+IFR SURVEYS 6.125" <7858-13037>	STEWARD 14C-6HZ AWB (117'-13103'MD)
13037.00	13103.00	Blind Drilling (std)	Projection to bit	STEWARD 14C-6HZ AWB (117'-13103'MD)

REFERENCE WELLPATH IDENTIFICATION			
Operator	KERR-MCGEE OIL & GAS ONSHORE LP (LAMBERT STATE PLANE COORD)	Slot	SLOT#08 STEWARD 14C-6HZ (440'FSL & 1689'FWL, SEC.07)
Area	COLORADO	Well	STEWARD 14C-6HZ
Field	WELD COUNTY (KERR MCGEE)	Wellbore	STEWARD 14C-6HZ AWB (117'-13103'MD)
Facility	SEC.07-T1N-R65W		

WELLPATH COMMENTS				
MD [ft]	Inclination [°]	Azimuth [°]	TVD [ft]	Comment
117.00	0.131	283.726	117.00	BEGIN GYRO SURVEYS
1574.00	0.403	233.660	1573.99	TIE-INTO GYRO SURVEYS
1661.00	1.060	287.830	1660.99	BEGIN MWD+IFR SURVEYS
7799.00	86.430	3.524	7401.94	7" CASING POINT
13037.00	89.320	358.060	7404.55	LAST BHI MW+IFR SURVEYS
13103.00	89.320	358.060	7405.33	PROJECTION TO BIT