

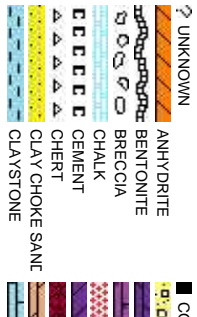


Scale: 5" / 100'  
Measured Depth Log

Well Name	Steward 14C-6HZ		
Location	SEC7 T1N R65W		
State	COLORADO	County	WELD
Country	USA	Rig Number	XTREME 8
API Number	05123395910000	AFE #	2080661
Region	DJ BASIN	Field	WATTENBERG
Spud Date	9/25/2014	Drilling Completed	1/12/2015
Surface Coordinates	440' FSL 1689' FWL 40.059858/-104.709855		
Bottom Hole Coordinates	410' FSL 1697' FWL 40.074363/-104.710065		
Ground Elevation	5001'	K.B. Elevation	5018'
Logged Interval	6800'	To	13103'
Formation	CODELL SANDSTONE	Total Depth	13103'
Type of Drilling Fluid	H2O, LSND		

Company ANADARKO PE  
Address ANADARKO PE  
ATTN: IAN HAR  
1099 18TH ST.  
DENVER, CO 8

Name MICHAEL AND  
Company COLUMBINE L  
Address COLUMBINE L  
602 S. LIPAN S  
DENVER, CO 8



## Operator

ETROLEUM INC  
ETROLEUM CORPORATION  
RIS #15007  
#1800  
0202-1918

## Geologist

ERSON, FLORA SPERBERG  
OGGING INC  
OGGING INC  
T.  
0223

## Rock Types

CONGLOMERATE	MARLSTONE	SHALY SANDSTONE
DOLomite	METAMORPHIC	SHALY SILTSTONE
DOLomitic LIMESTONE	NO SAMPLE	SILTY SHALE
GRANITE	SALT	SILTSTONE
GYPsum	SANDSTONE	TILL
IGNEOUS	SALT-PEPPER SANt	TUFF
SIDERite or LIMONITE	SHALE	WELDED TUFF
LIMESTONE	SHALE COLORED	
	SHALE GRAY	

## Accessories

<b>Fossils</b>	GASTROPOD	ARGILLITE GRAIN	HEAVY MINERAL	<b>Stringer</b>
INOCERAMUS	B BENTONITE	K KAOLIN	ANHYDRITE STRINGER	BENTONITE STRINGER
ALGAE	O OOLITE	M MARCASITE	COAL STRINGER	DOLOMITE STRINGER
AMPHIPORA	O OSTRACOD	M MICACEOUS	GYPSUM STRINGER	LIMESTONE STRINGER
BELEMNITE	P PELECYPOD	C CARBONACEOUS FLAKES	P PYRITE	MARLSTONE (CALC) STRG
BIOCLASTIC	P PELLET	C CHITDK	S SALT CAST	SANDSTONE (DOL) STRG
BRACHIOPOD	P PISOLITE	C COAL - THIN BEDS	S SANDY	SHALE STRINGER
BRYOZOA	P PLANT REMAINS	D DOLOMITIC	F FELDSPAR	
CEPHALOPOD	S SCAPHOPOD	F FERRUGINOUS PELLET	S SIDERITE	
CORAL	S STROMATOPOROID			
CRINOID				
ECHINOID				
F FISH	<b>Minerals</b>	F FERRUGINOUS	S SILICEOUS	SILTSTONE STRINGER
FORAMINIFERA	A ANHYDRITIC	G GLAUCONITE	S SILTY	
F FOSSIL	A ARGILLACEOUS	G GYPSIFEROUS	T TUFFACEOUS	

## Other Symbols

<b>Oil Show</b>	P PINPOINT	W WIRELINE TESTED - LEFT	E EARTHY
V VUGGY	F FAULT	W WIRELINE TESTED - RT	F FINELY XLN
<b>Engineering</b>	F FORMATION TOP	D DRILL STEM TEST	G GRAINSTONE
D DEAD	G GAS SHOW	M MN DEPTH	L LITHOGRAPHIC
E EVEN	O OIL SHOW	M MN DEPTH	M MICROXLN
Q QUESTIONABLE	B BIT		
S SPOTTED STAINING	C CONNECTION (UP)	<b>Rounding</b>	M MUDSTONE
		A ANGULAR	P PACKSTONE
<b>Porosity</b>	C CONNECTION (DOWN)	S SUBANG	W WACKESTONE
C CONNECTION GAS	N NORMAL FAULT	R ROUNDED	
E EARTHY	O OVERTURNED STRATA	S SUBANG	
F FENESTRAL	R REVERSE FAULT	S SUBANG	
T TRIP GAS	C CASING		
T TRIP GAS (LEFT)		<b>Textures</b>	P POOR
I INTERCRYSTALLINE	D DOWN TIME GAS	S SIDEWALL CORE (LEFT)	M MODERATE
I INTERCRYSTALLINE	D DOWN TIME GAS (LEFT)	S SIDEWALL CORE (RIGHT)	W WELL
M MOLDIC	C CORE - LOST	S SLIDE	C CHALKY
O ORGANIC	C CORE - RECOVERED	S SURVEY	C CRYPTOXLN

ROP & GAS DATA PROVIDED BY PASON,  
GAMMA & SURVEY DATA  
PROVIDED BY BAKER HUGHES

COLUMBINE LOGGING RIGGED UP ON  
01/07/2015 MANNED 2-PERSON LOGGING  
WITH PASON GAS AND BEGAN LOGGING  
ON 01/07/2015, xx:xx MST at 6,800' MD

ROP  
ROF  
GAMMA

### Total Gas & Chromatograph

GAS

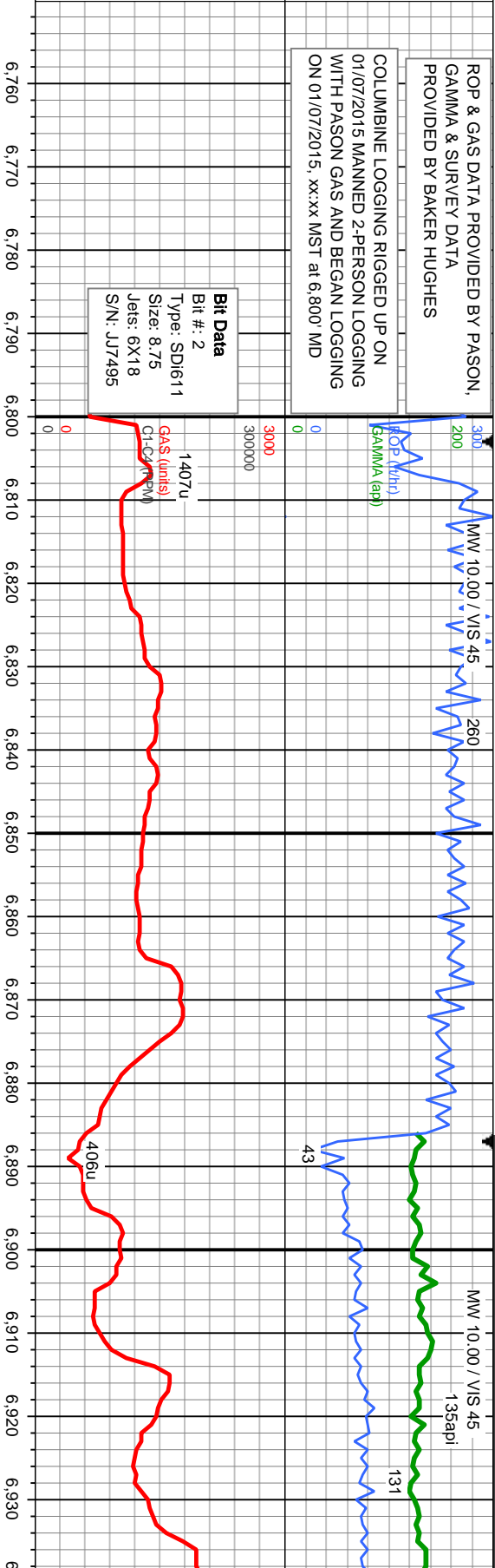
C1

C2

Ω  
⋮

C4 .....

## Depth Labels



50' SAMPLE INTERVAL	50' SAMPLE DESCRIPTION
1	1.00
2	1.00
3	1.00
4	1.00
5	1.00
6	1.00
7	1.00
8	1.00
9	1.00
10	1.00
11	1.00
12	1.00
13	1.00
14	1.00
15	1.00
16	1.00
17	1.00
18	1.00
19	1.00
20	1.00
21	1.00
22	1.00
23	1.00
24	1.00
25	1.00
26	1.00
27	1.00
28	1.00
29	1.00
30	1.00
31	1.00
32	1.00
33	1.00
34	1.00
35	1.00
36	1.00
37	1.00
38	1.00
39	1.00
40	1.00
41	1.00
42	1.00
43	1.00
44	1.00
45	1.00
46	1.00
47	1.00
48	1.00
49	1.00
50	1.00

**Bit Data**  
Bit #: 2  
Type: SDi611  
Size: 8.75  
Jets: 6X18  
S/N: JJ7495

PIERRE SHALE

**Well Bore**  
**TV D —**

TV/D

ACETONE WAS USED AS THE CUTTING AGENT WITH THE DIMPLE FILLED TO THE RIM. THE RATINGS ARE BASED ON 7 DESCRIPTORS: NONE, SLIGHT TRACE, TRACE, FAIR, MODERATE, GOOD, AND EXCELLENT. THE DESCRIPTOR USED IS BASED ON THE LOGGERS OBSERVATIONS AND BEST JUDGMENT OF BRILLIANCE, COLOR AND LONGEVITY OF THE CUT.

MD: 6,830 .  
TVD: 6,765.66 .  
Inclination: 0.22 -  
Azimuth: 262.78 -  
VS: -603.46 .

100% SLTY SH: med-dk gy, tr lt gy, sft-firm, sb  
biky-sb ply, tr ply, med-v slty, tr sl sdy ip, sl calc;  
O Show: slow difse, sl strng, bl wh mky cut, thn  
yel - grn ring

100% SLTY SH: med-ck gy, tr it gy, sft-frm, sb  
biky-sb ply, tr ply, med-v sfty, tr sl sdy ip, sub  
wyx-sb gy tex, non-sl calc, occ fy lam, tr rexl foss:  
O Shw: slow dfeel, sl stmg, bl wh mky cut, mod  
thk, mod bri yel - grn ring

100% SLTY SH: med-dk gy, tr ll gy, sft-  
biky-sb pty, tr pty, med-v slty, tr sl scdy  
wxy-sl gy tex, non-sl calc, occ fy lam, occ  
Show: slow disse, sl stmg, bl wh mky c  
thk, mod bri yel - grn ring

MD: 6,918 .  
TVD: 6,853.61 .  
Inclination: 3.29 -  
Azimuth: 354.48 -  
VS: -600.97 .

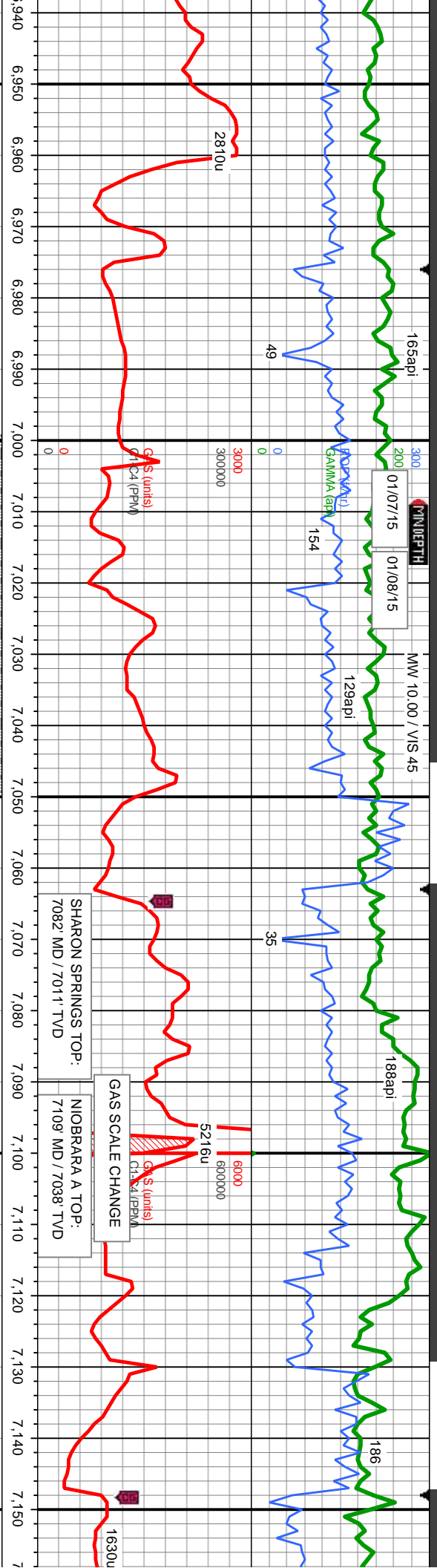
## Oil Show

STFME

## Images







MD: 7.005  
TVD: 6.939.37  
Inclination: 13.98  
Azimuth: 10.5  
VS: -587.36

TVD SCALE CHANGE

100% SLTY SH: med-dk gy, tr lt gy, sft-frn, sb  
biky-sb pily, tr pily, med-v silty, tr sl sdy ip, sub  
wxy-sl gy tex, non-sl calc, occ ly lam, occ  
foss, scat bent: O Show: slow difse, sl stmg, pabl  
wh mky cut, mod thk, mod bri yel - grn ring

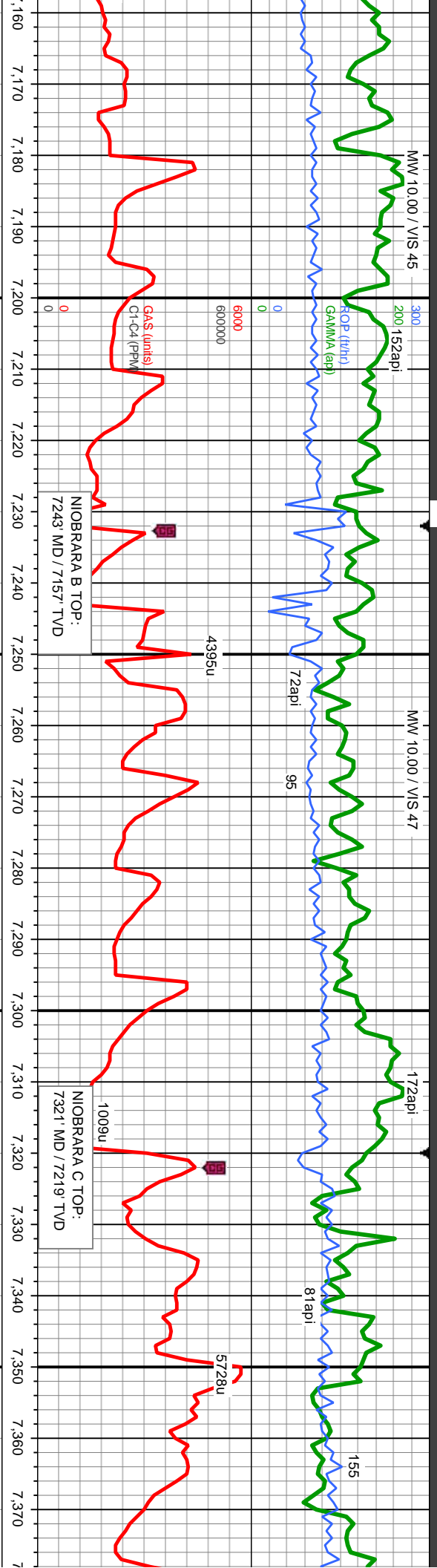
MD: 7.090  
TVD: 7.020.47  
Inclination: 20.69  
Azimuth: 4.7  
VS: -562.26

50% MRLST: med-dk gy-blk, sb biky-sb pily, frn,  
mot tex, mod arg, sl silty, occ fousus, v calc, 30%  
SLTY SH: med-dk gy, tr lt gy, sft-frn, sb biky-sb  
pily, tr pily, med-v silty, tr sl sdy ip, sub wxy-sl gy  
tex, non-sl calc, 20% CHK: med gy-lt gy, rthy tex,  
sb biky-sb pily, sft-sl frn, sl arg, v calc, tr calc  
nod, tr bent: O Show: mod difse, mod stmg, semi  
bri bl wh mky cut, thk, bri bl wh - sl grn ring

90% MRLST: med-dk gy-blk, sb biky-sb pily, frn,  
mot tex, mod arg, sl silty, occ fousus, v calc, 10%  
CHK: med gy-lt gy, rthy tex, sb biky-sb pily, sft-sl  
frn, sl arg, tr calc nod, v calc, tr bent: O Show:  
mod difse, mod stmg, semi bri bl wh mky cut,  
thk, bri bl wh - sl grn ring

90% MRLST: med-dk gy-blk, sb biky-sb pily, frn,  
mot tex, mod arg, sl silty, occ fousus, v calc, 10%  
CHK: med gy-lt gy, rthy tex, sb biky-sb pily, sft-sl  
frn, sl arg, tr calc nod, v calc, tr bent: O Show:  
mod difse, mod stmg, semi bri bl wh mky cut,  
thk, bri bl wh - sl grn ring





MD: 7,176.  
TVD: 7,099.48.  
Inclination: 25.81 -  
Azimuth: 356.59 -  
VS: -528.4.

RLST: med-dk gy-blk, sb blk-ly-sb ply, frm,  
mod arg, sl sily, occ fousus, v calc, 10%  
gy-lt gy, rthy tex, sb blk-ly-sb ply, sft-sl  
arg, tr calc nod, v calc, tr bent; O Show:  
st difse, stmg, bri bl wh mky cut, thk, bri  
sl grn ring

MD: 7,263.  
TVD: 7,174.6.  
Inclination: 34.58 -  
Azimuth: 354.8 -  
VS: -484.7.

70% CHK: crm - bf, lt - med gy, mot bm - dk gy, sft  
- frm, brit, sb blk-ly, sb wxy tex, arg calc mtz, 30%  
MRLST: med - dk gy, blk, sl mot, sb ply - sb blk-ly,  
frm, arg - sily mtz, v calc, rr fos frag lnooc, rr pyr,  
rr bent, rr bri yel mnt flr; O Show: fast difse,  
hvy stmg, bri bl wh mky cut, thk, bri bl wh ring

MD: 7,348.  
TVD: 7,239.6.  
Inclination: 45.4 -  
Azimuth: 356.2 -  
VS: -430.3.

75% CHK: crm - bf - brn, mot  
frm, brit - fri, sb blk-ly, wxy tex  
MRLST: med - dk gy - blk, sb  
mtz, v calc, occ fos frag lnooc  
bent, tr bri yel - org mnt flr  
Show: mod difse, sl stmg, m  
thk, bri bl wh - sl grn ring











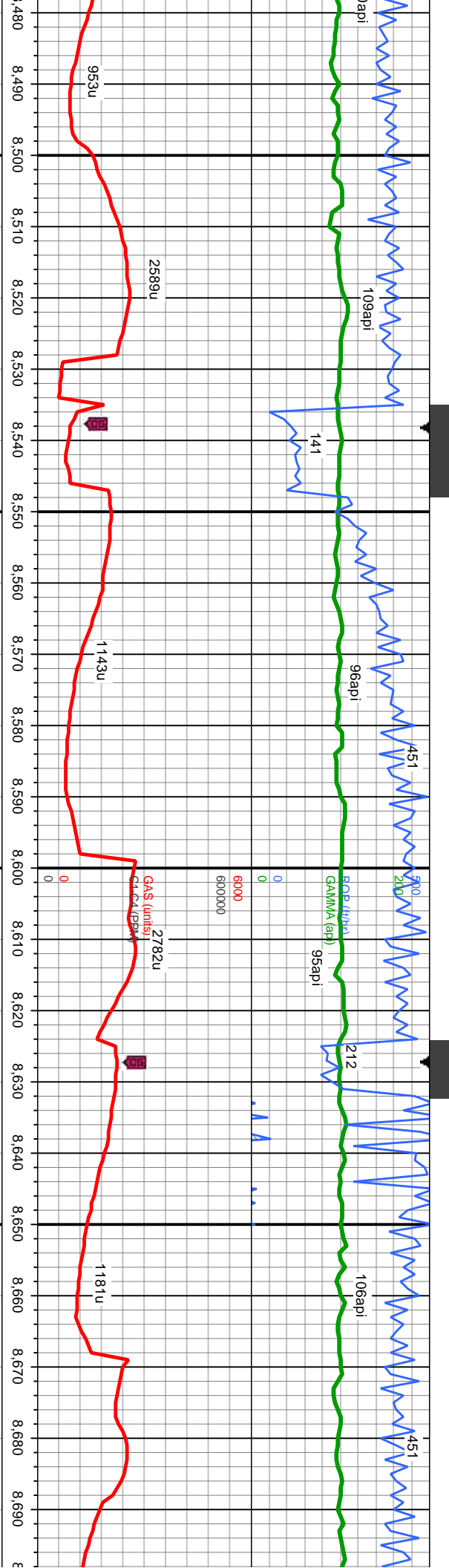










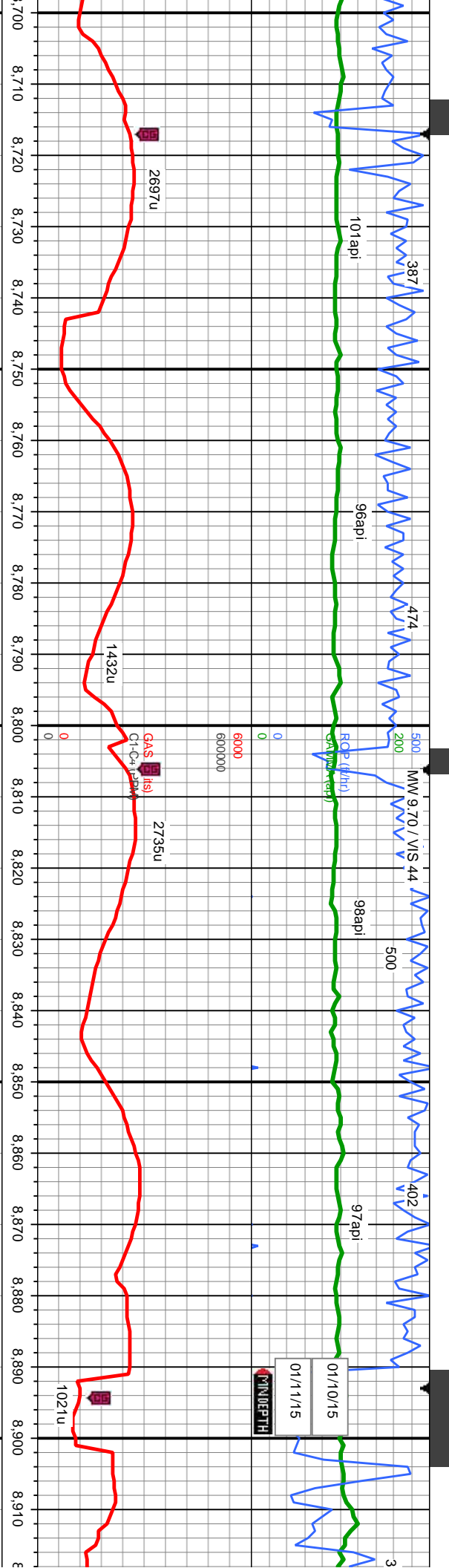


MD: 8,561  
TVD: 7,401.75  
Inclination: 90  
Azimuth: 359.74  
VS: 743.23

MD: 8,651  
TVD: 7,401.78  
Inclination: 89.96  
Azimuth: 358.78  
VS: 833.22

sb rnd, mod-w srl, difise, fnt string,	95% SS: lt-dk brn, med-dk gy brn, occ crm, trnsi-clr gr, mod hd, brit, vf-f gr, ang-sb rnd, mod-w srl, mod cmt, sl calc cmt, cons, 5% SLTY SH: gy-dk gy, silty tex, sb plty- plty, occ v f lam, v sl calc, no flor; O Show: slow-mod difise, mod bri bl wh mky cut, thk, v bri bl wh ring	100% SS: lt-dk brn, med-dk gy brn, occ crm, trnsi-clr gr, mod hd, brit, vf-f gr, ang-sb rnd, mod-w srl, mod cmt, sl calc cmt, cons, occ SLTY SH, no flor; O Show: mod-fast difise, mod string, mod bri bl wh mky cut, thk, v bri bl wh ring
	7600	7600





MD: 8,740.  
TVD: 7,401.81.  
Inclination: 90.  
Azimuth: 357.93.  
VS: 922.18.

MD: 8,827.  
TVD: 7,401.84.  
Inclination: 89.96.  
Azimuth: 358.16.  
VS: 1,009.12.

MD: 8,912.  
TVD: 7,401.14.  
Inclination: 90.9.  
Azimuth: 358.91.  
VS: 1,094.09.

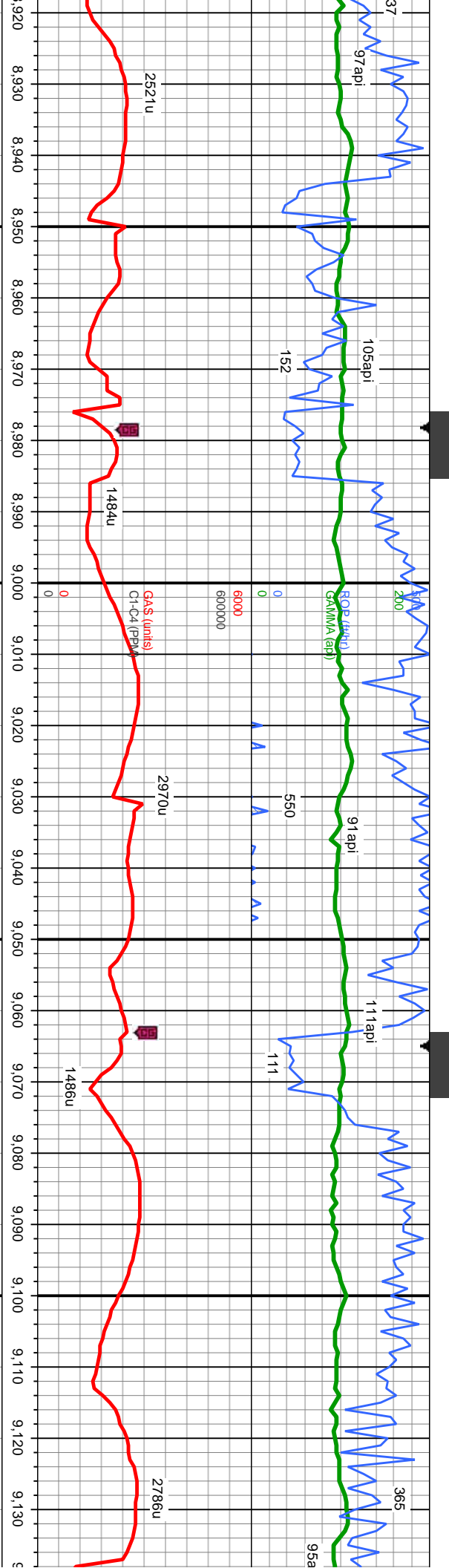
100% SS: lt-dk brn, med-dk gy brn, occ crm, trnsf-clr gr, mod hd, brit, vf-f gr, ang-sb rnd, mod-w srt, mod cmt, sl calc cmt, cons, occ intbd SLTY SH, no flr; O Show: mod difse, mod stmg, mod bri bl wh mky cut, thk, v bri bl wh ring

100% SS: lt-dk brn, med-dk gy brn, occ crm, trnsf-clr gr, mod hd, brit, vf-f gr, ang-sb rnd, mod-w srt, mod cmt, sl calc cmt, cons, occ intbd SLTY SH, no flr; O Show: slow--mod difse, fnl stmg, mod bri bl wh mky cut, thk, v bri bl wh ring

95% SS: lt-dk brn, mod cmt, sl calc c







MD: 8,999  
TVD: 7,400.01  
Inclination: 90.52  
Azimuth: 0.02  
VS: 1,181.07

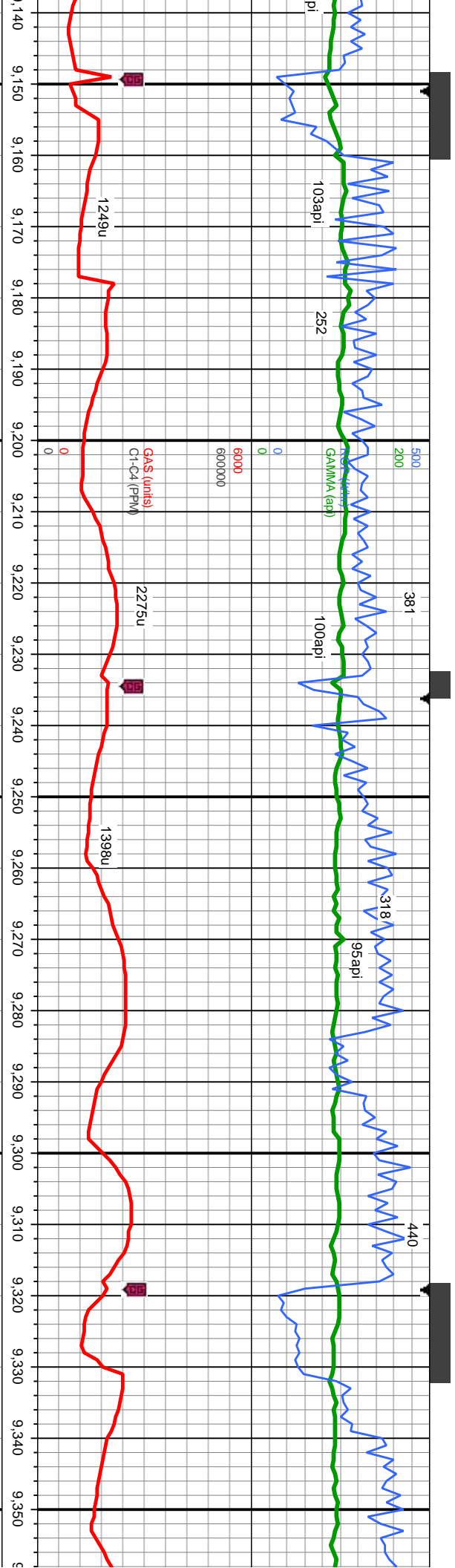
MD: 9,085  
TVD: 7,399.5  
Inclination: 90.15  
Azimuth: 359  
VS: 1,267.1

med-dk gy brn, occ crn, trnsf-clr gr, mod hd, brit, vf-f gr, ang-sb rnd, mod-w srt, mt, cons, 5% SLTY SH, gy-dk gy, silty tex, sb blkty- ply, occ v f lam, v sl calc, no -mod difse, mod bri bl wh mky cut, thk, v bri bl wh rin

100% SS: lt-dk brn, med-dk gy brn, occ crn, trnsf-clr gr, mod hd, brit, vf-f gr, ang-sb rnd, mod-w srt, mod cnt, sl calc cnt, cons, occ intbd SLTY SH, no flor; O Show: mod-fast difse, mod stmg, mod bri bl wh mky cut, thk, v bri bl wh rin

95% SS: lt-dk brn, med-dk gy brn, occ mod cnt, sl calc cnt, cons, 5% SLTY flor; O Show: mod difse, mod stmg, r





MD: 9,170.  
TVD: 7,400.14  
Inclination: 88.99  
Azimuth: 357.99  
VS: 1,352.03

MD: 9,255.  
TVD: 7,402.04  
Inclination: 88.36  
Azimuth: 357.14  
VS: 1,436.9

MD: 9,340.  
TVD: 7,403.8  
Inclination: 89.32  
Azimuth: 358.59  
VS: 1,521.9

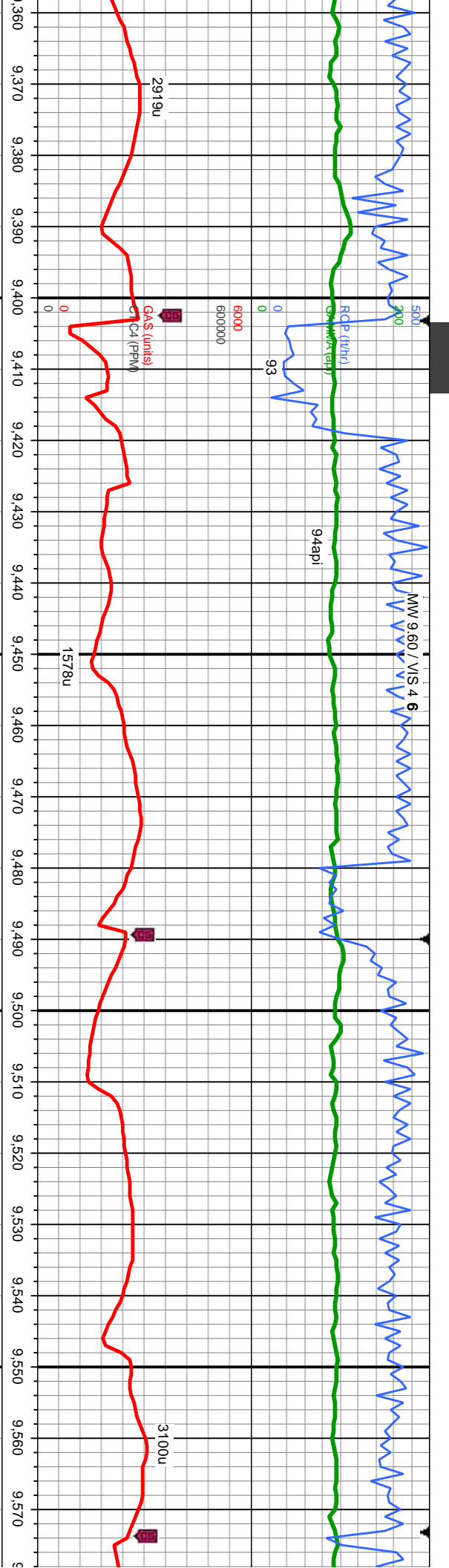
crm, trnsi-clr gr, mod hd, brit, vf-f gr, ang-sb rnd, mod-w srt, SH: gy-dk gy, silty tex, sb blk- ply, occ v l lam, v sl calc, gn o mod bri bl wh mky cut, thk, bri bl wh ring

100% SS: lt-dk brn, med-dk gy brn, occ crm, trnsi-clr gr, mod hd, brit, vf-f gr, ang-sb rnd, mod-w srt, mod cmt, sl calc cmt, cons, occ intbd SLTY SH, no flr; O Show: mod difse, mod sting, mod bri bl wh mky cut, thk, bri bl wh ring

100% SS: lt-dk brn, gy brn, wh, lt gy, trnsi-clr gr, mod - v hd, mod cmt, mod calc cmt, cons, occ intbd SLTY SH, rr is, tr glic difse, sting, bri bl wh mky cut, v thk, v bri bl wh ring





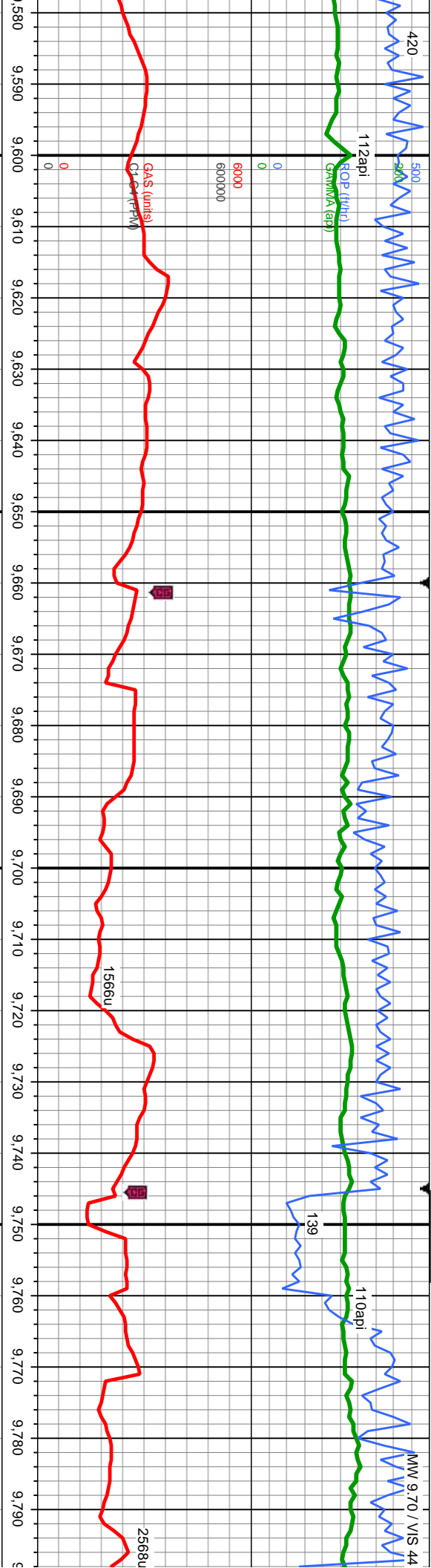


MD: 9.426  
TVD: 7,404.4  
Inclination: 89.84  
Azimuth: 358.1  
VS: 1,607.9

MD: 9.511  
TVD: 7,404.5  
Inclination: 90  
Azimuth: 359.1  
VS: 1,692.8

bit, vf-f gr, sb ang-sb rnd, mod-w srl, mod cmt, mod calc cmt, cons, occ v fy lnbd SLTY SH, rr LS, com diss pyr, no flor; O Show: fast gn o flor; O Show: v fast difse, string, bri bl wh mky cut, v thk, v bri bl wh ring





MD: 9,683.  
TVD: 7,403.8  
Inclination: 90.52  
Azimuth: 357.2  
VS: 1,864.7

MD: 9,769.  
TVD: 7,403.5.  
Inclination: 89.78  
Azimuth: 357.6  
VS: 1,950.69

c grd sd, sb	95% SS: lt-dk brn, gy brn, trns-l-clr gr, mod - v hd, brit, v-l f gr, sb ang-sb rnd, mod-w srt, mod cnt, sl-mod calc cnt, cons, occ (5%) v fy intbd SLTY SH, occ dissn pyr, tr glau, dul gn o flor; O Show: v fast difse, hvy stng, v bri bl wh mky cut, v thk, v bri bl wh ring
7600	90% SS: lt-dk brn, gy brn, wh ip, trns-l-clr gr, hd, brit, v-l f gr, sb ang-sb rnd, w srt, mod cnt, sl calc cnt, cons, occ (10%) v fy intbd SLTY SH, occ dissn pyr, tr glau, dul gn o flor; O Show: mod difse, mod stng, mod bri bl wh mky cut, v thk, v bri bl wh ring

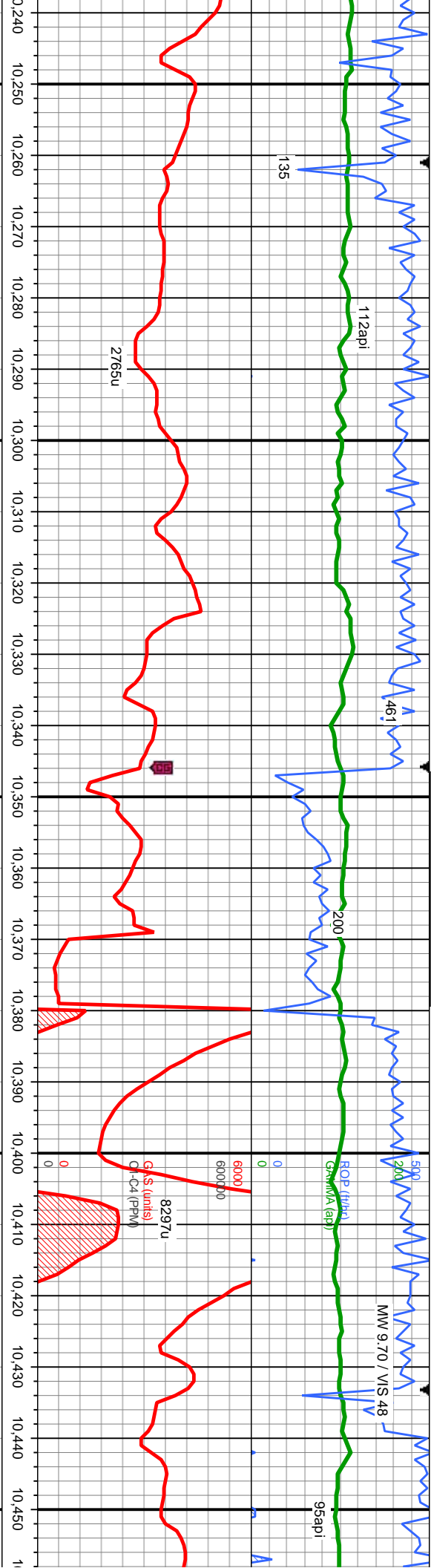










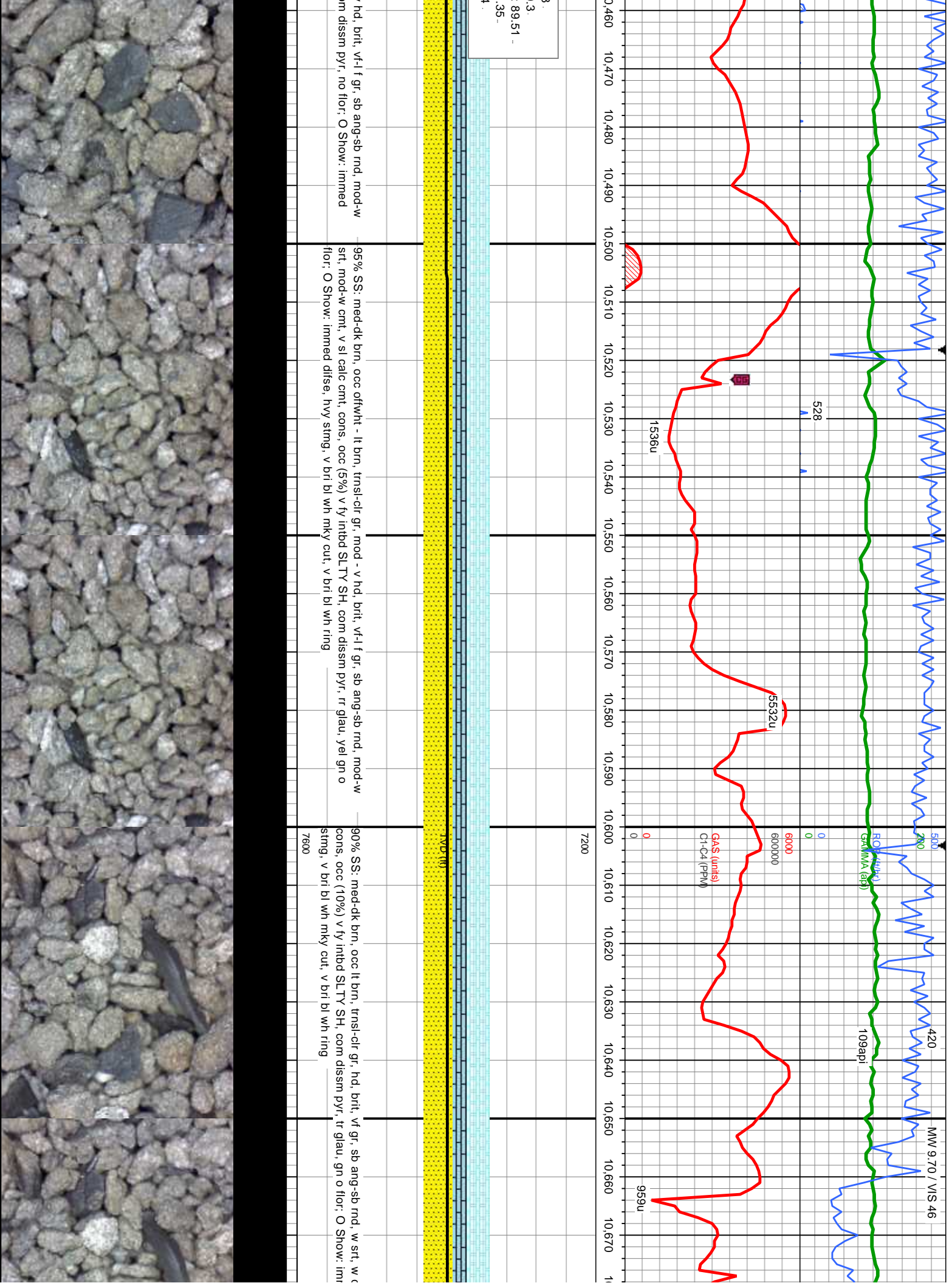


ip, trnsi-clr gr, mod - v hd, brit, vf-l f gr, sb ang-sb rnd, cons, tr v fy intbd SLTY SH, com dissn pyr, tr glau, v fnt, yel gn mky cut, v thk, v bri bl wh ring

100% SS: lt-dk brn, trnsi-clr gr, mod - v hd, brit, vf-l f gr, sb ang-sb rnd, mod-w srt, mod-w cnt, non calc cnt, cons, tr v fy intbd SLTY SH, com dissn pyr, rr glau, v fnt, yel gn flor, O Show: v fast difse, stmg, bri bl wh mky cut, v bri bl wh ring

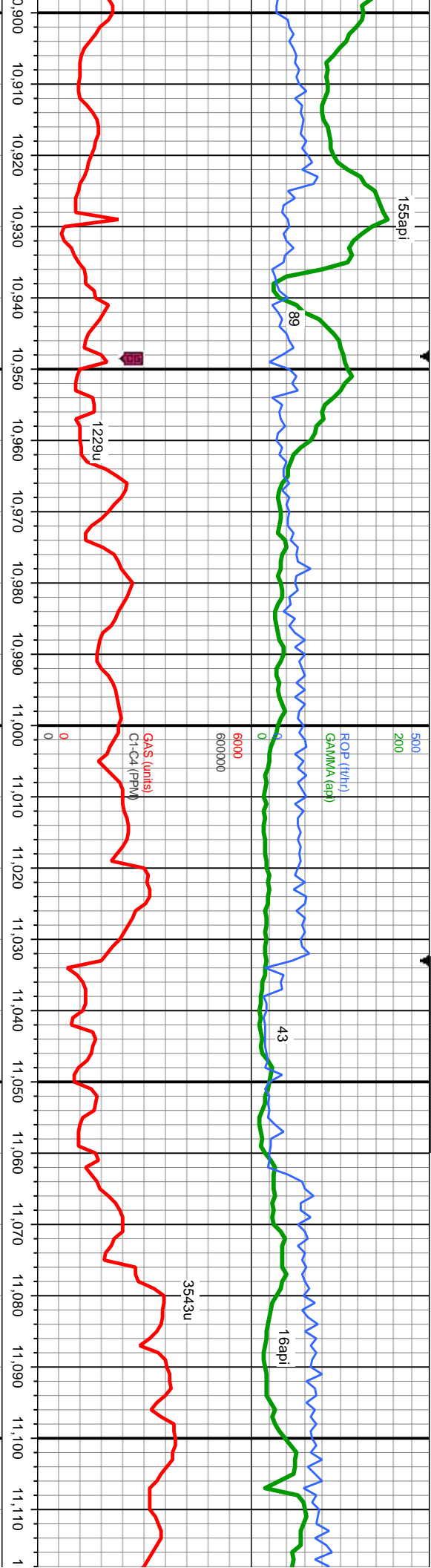
100% SS: med-dk brn, occ offwht - lt brn, trnsi-clr gr, mod - v srt, mod-w cnt, v sl calc cnt, cons, tr v fy intbd SLTY SH, cc difse, hvy stmg, v bri bl wh mky cut, v bri bl wh ring











MD: 10,969.  
TVD: 7,396.9  
Inclination: 91.07 -  
Azimuth: 359.32 -  
VS: 3,150.43.

TVD (ft)	
90% LS: offwht - crn, bf - brn, frm-v hd, brit, sb ply - sb blk, v wxy tex, crpxl, v calc, tr (5%) SS, tr(5%) SLTY SH, tr fos frag lnc, tr bent, tr dui yel - orng mnl flr, gn o flr; O Show:immed difse, mod stmg, bl wh mky, cut, v bri bl wh ring	7600
60% LS: offwht - crn, bf - brn, frm-v hd, brit, sb ply - sb blk, v wxy tex, med grn - crpxl, v calc, fossus, rexl, 40% SS: med-dk brn, occ offwht - lt brn, trns-lcr gr, hd, brit, vt-f gr, sb ang-rnd, mod-w srt, w cnt, sl calc cnt, cons: 10% SLTY SH:gy-dk gy, sily-f tex, occ ly lam, sb blk-ply, calc, tr bent, tr dissm pyr, tr dui yel - orng mnl flr, gn o flr; O Show: immed difse, stmg, bl wh mky cut, v bri bl wh ring	7600
90% LS: offwht - c	





MW 9.60 / V/S 47

500  
200

175

ROP (ft/h)  
GAMMA (api)

59

5.7 api

6000  
600000

GAS (units)  
GAS (ppm)

1941u

2432u

11,120 11,130 11,140 11,150 11,160 11,170 11,180 11,190 11,200 11,210 11,220 11,230 11,240 11,250 11,260 11,270 11,280 11,290 11,300 11,310 11,320 11,330 1

MD: 11,146

TV/D: 7,394.16

Inclination: 90.76

Azimuth: 1.65

VS: 3,327.25

TV/D (ft)

7200

MD: 11,318

TV/D: 7,394.04

Inclination: 89.32

Azimuth: 3.08

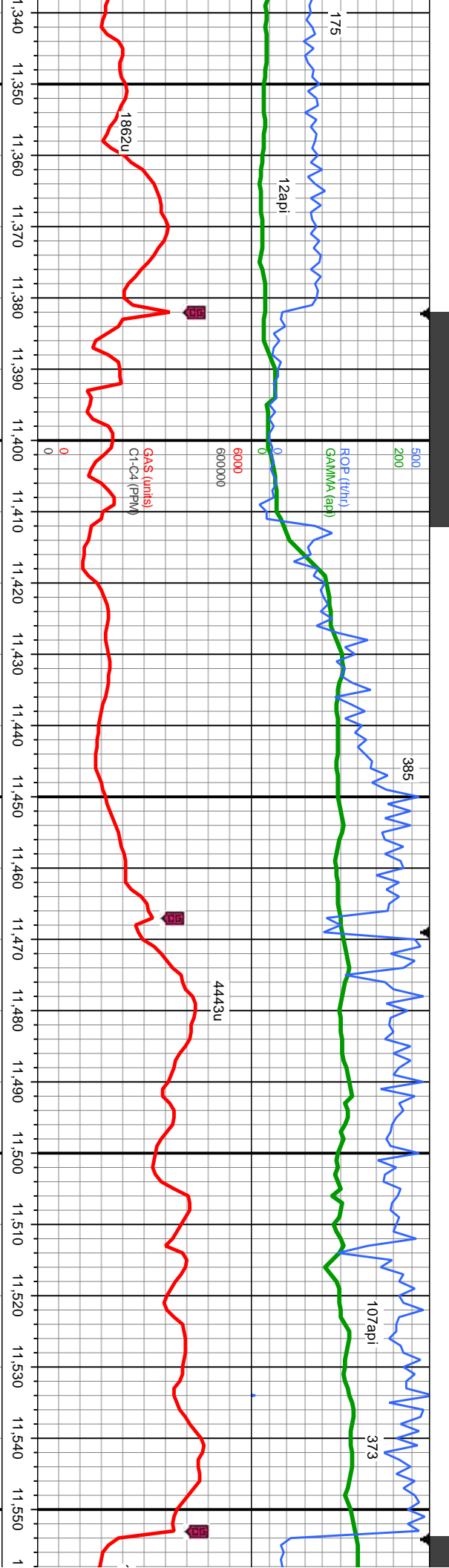
VS: 3,499.11

firm, bf - brn, frm-v-hd, brit, sb ply - sb blk, v wxy tex, med grn - crpxl, v calc.  
SS: med-dk brn, occ ofwht - lt brn, trnst-clr gr, hd, brit, vf-f gr, sb ang-rnd, mod-w  
cmt, cons, abnt SLTY SH, tr bent, tr dul yel - org mml flr, fnt gn o flr; O  
se, mod stmg, bl wh mky cut, v bri bl wh ring

85% LS: ofwht - crm, bf - brn, frm-v-hd, brit, sb ply - sb blk, v wxy tex, med grn - crpxl, v calc.  
fossus, rexl, 10% SLTY SH: gy-dk gy, frm-hd, silty tex, occ ly lam, sb blk-ply, calc, rr pyr incl, 5%  
SS: med-dk brn, occ ofwht - lt brn, trnst-clr gr, hd, brit, vf-f gr, sb ang-rnd, mod-w srl, w cmt, sl  
calc cmt, cons; tr bent, tr dul yel - org mml flr, mod gn o flr; O Show-sl-mod dlse, mod stmg, bl  
wh mky cut, bl wh ring

100% LS: ofwht - crm, bf - brn, frm-v-h  
fossus, rexl, tr SLTY SH; tr SS; tr bent,  
stmg, bri bl wh mky cut, v bri bl wh ring

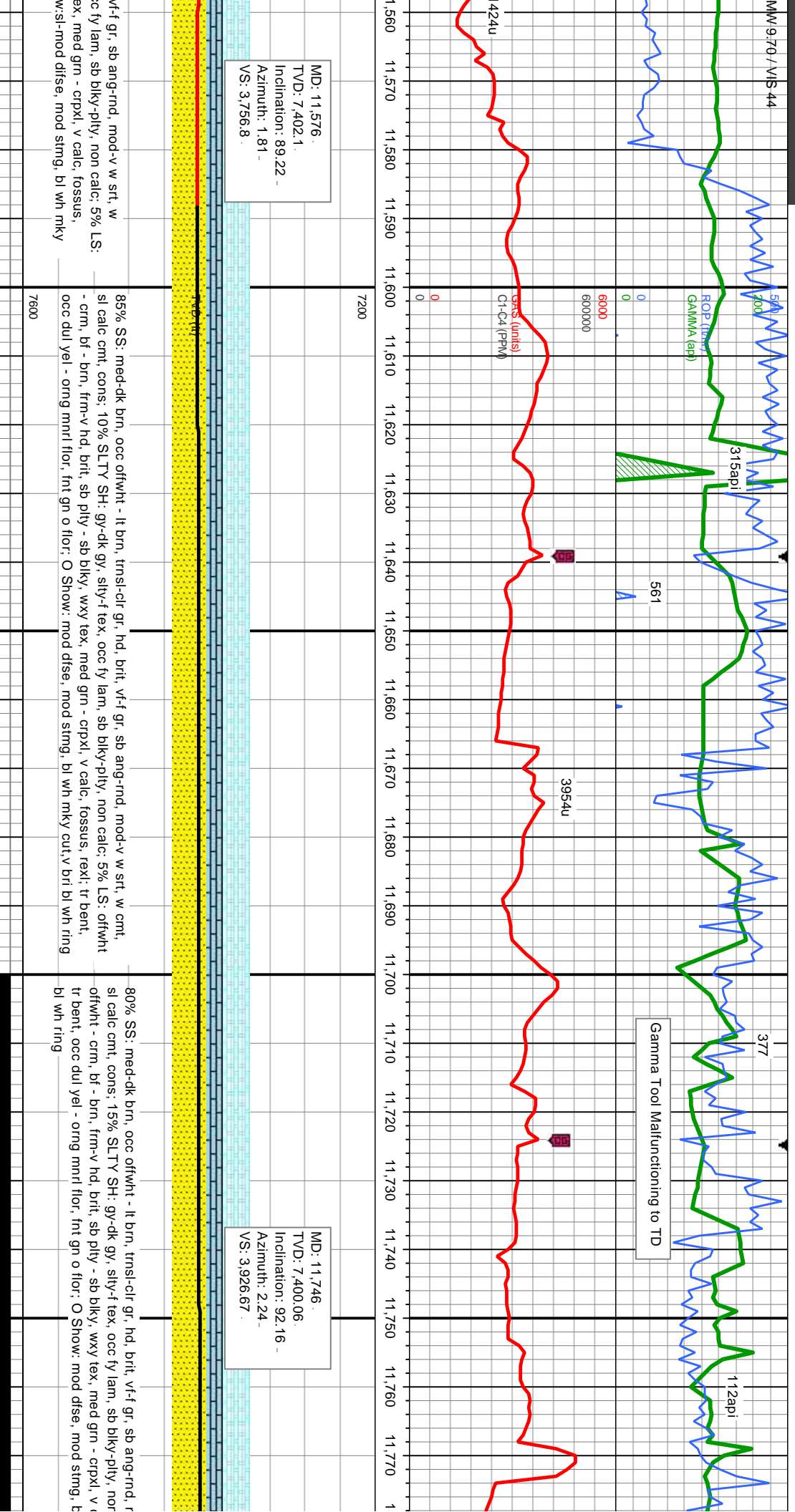




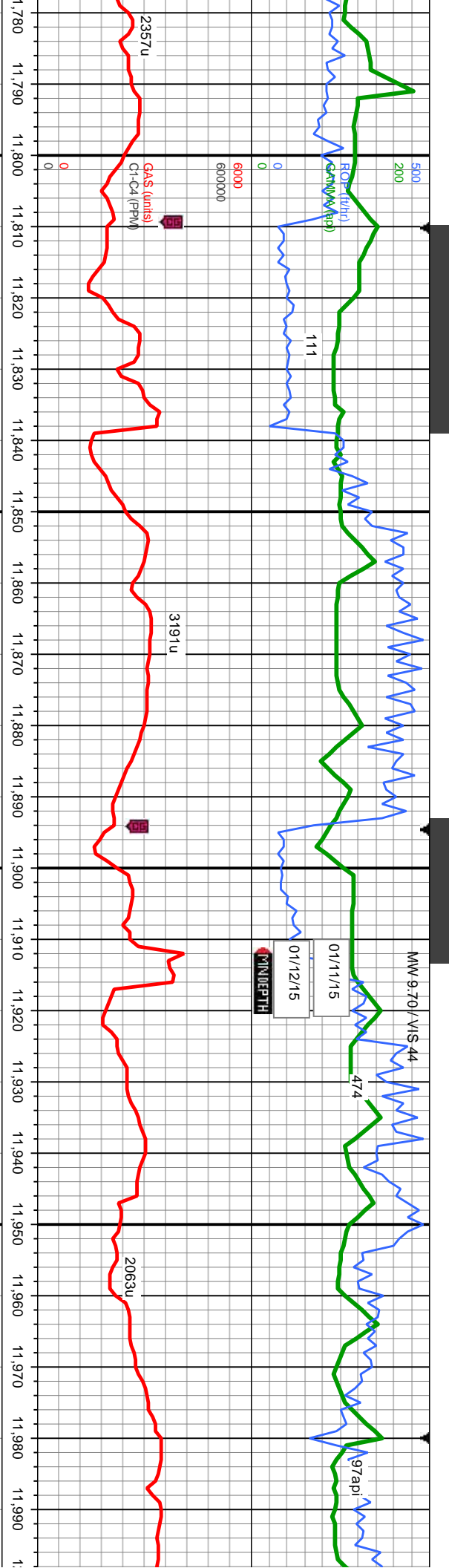
11,340	11,350	11,360	11,370	11,380	11,390	11,400	11,410	11,420	11,430	11,440	11,450	11,460	11,470	11,480	11,490	11,500	11,510	11,520	11,530	11,540	11,550
50% LS: offwht - crm, bf - brn, frm-v hd, brit, sb ply - sb blk, v wxy tex, med grn - cpxl, v calc, fossus, rexi; 40% SS: med-dk brn, occ offwht - lt brn, trns-l-clr gr, hd, brit, vt-f gr, sb ang-rnd, mod-v w srt, w cmt, sl calc cmt, cons: 10% SLTY SH: gy-dk gy, silty-f tex, occ ly lam, sb blk-ply, calc; occ, dissim pyr, tr bent, tr dul yel - orng mnrl flr, gn o flr; O Show: mod-fast difse, mod stmg, bl wh mky cut, v bri bl wh ring																					
7600																					











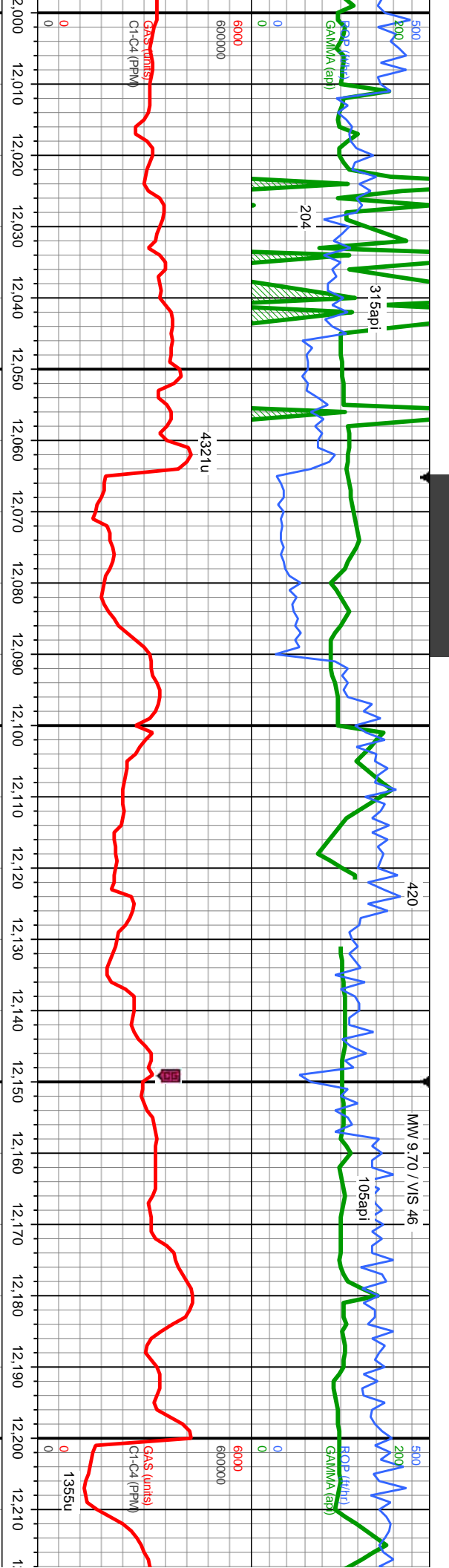
MD: 11,831  
TVD: 7,398.16  
Inclination: 90.4  
Azimuth: 3.04  
VS: 4,011.57

MD: 1  
TVD:  
Inclin:  
Azim:  
VS: 4

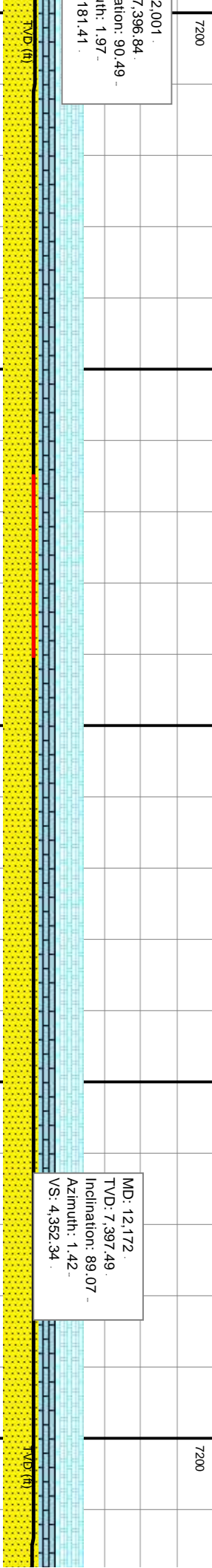
mod-v w srt, w cmt, calc; 5% LS: sl wh mky cut, v bri	85% SS: med-dk brn, occ offwht - lt brn, trnsi-clr gr, hd, brit, vf-f gr, sb ang-rnd, mod-v w srt, w cmt, sl calc cmt, cons; 15% SLTY SH: gy-dk gy, silty-f tex, occ fy lam, sb blk-y-pty, non calc; tr LS; tr bent, occ dul yel - orng mnrl flr, fnt gn o flr; O Sh: difse, mod stmg, bl wh mky cut, v bri bl wh ring	90% SS: med-dk brn, occ offwht - lt brn, trnsi-clr gr, hd, brit, vf-f gr, sb ang-rnd, mod-v w srt, w cmt, sl calc cmt, cons; 10% SLTY SH: gy-dk gy, silty-f tex, occ fy lam, sb blk-y-pty, non calc; tr LS; tr bent, rr foss frag inoc, no flr; O Sh: slow-mod difse, mod stmg, bl wh mky cut, v bri bl wh ring
7600		







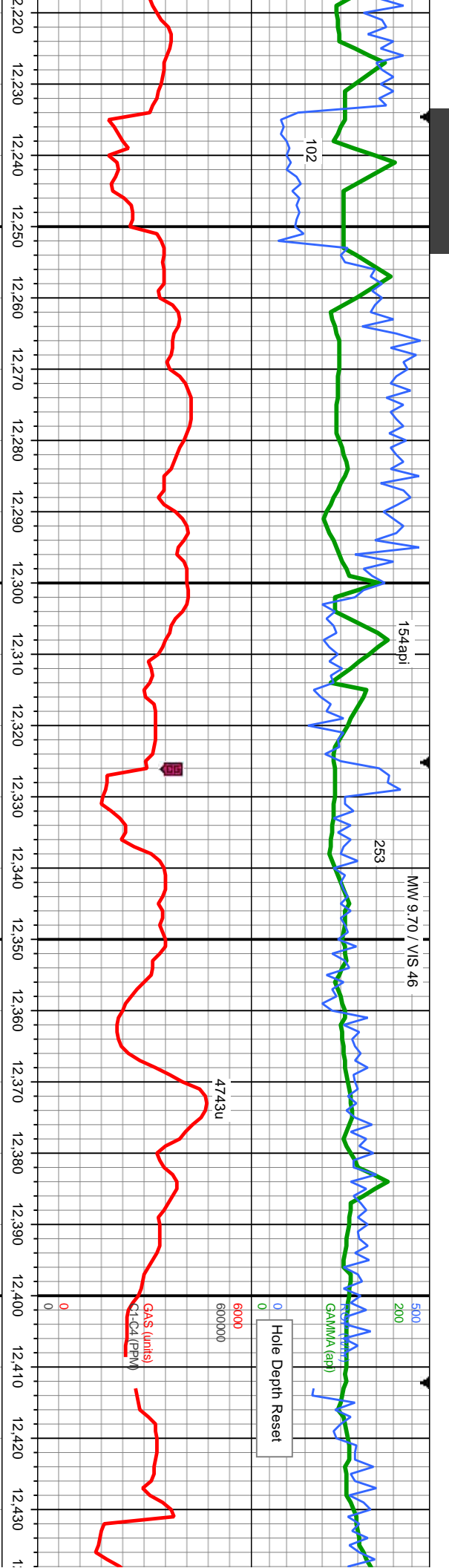
2.001  
7.396.84  
ation: 90.49  
th: 1.97  
181.41



MD: 12.172  
TVD: 7.397.49  
Inclination: 89.07  
Azimuth: 1.42  
VS: 4.352.34

90% SS: med-dk brn, occ offwh - lt brn, trnsi-clr gr, hd, brit, vf-f gr, sb ang-rnd, mod-v w srt, w cmt, sl calc cmt, cons; 10% SLTY SH: gy-dk gy, silty-f tex, occ fy lam, sb blk-y-pty, non calc; tr LS: tr bent, occ dul yel - orng mnrl flor, fnt gn o flor, O Show: dlse, mod strng, bl wh mky cut, v bri bl wh ring	7600
95% SS: med-dk brn, occ offwh - lt brn, trnsi-clr gr, hd, brit, vf-f gr, sb ang-rnd, mod-v w srt, w cmt, sl calc cmt, cons; 5% SLTY SH: gy-dk gy, silty-f tex, occ fy lam, sb blk-y-pty, non calc; tr LS: tr bent, no flor, O Show: fast dlse, mod strng, bri bl wh mky cut, v bri bl wh ring	7600
95% SS: lt-dk brn sl calc cmt, tr (5% flor, O Show: fast	7600





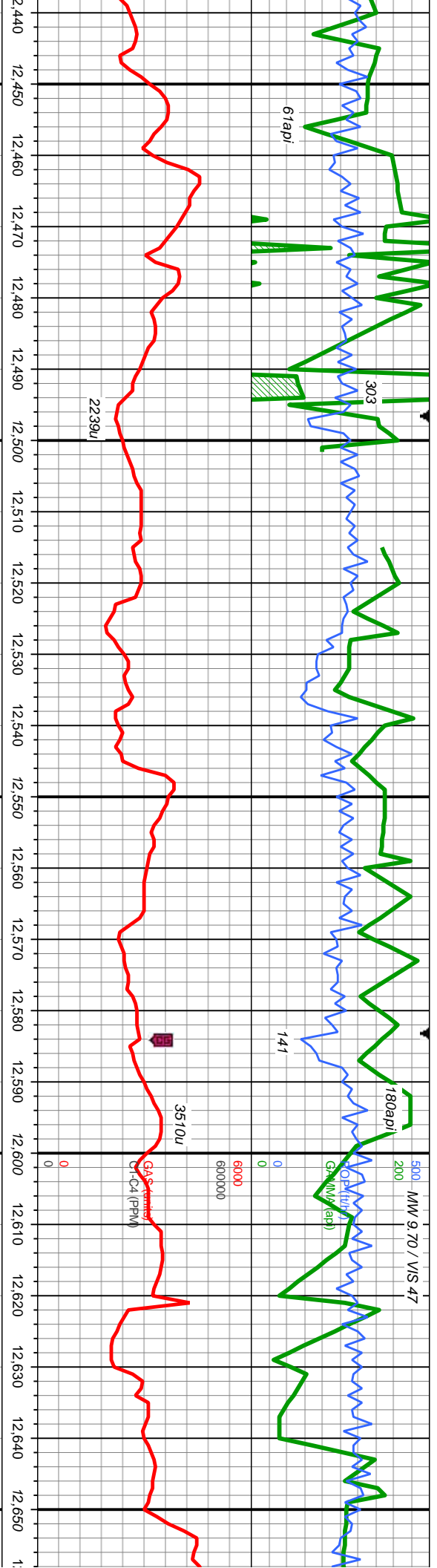
MD: 12,346.  
TVD: 7,401.4  
Inclination: 88.32 -  
Azimuth: 0.69.  
VS: 4,526.3.

MD: 12,431  
TVD: 7,403.37.  
Inclination: 89.1  
Azimuth: 359.37  
VS: 4,611.31.

, tr offwht, trnsl-clr gr, mod hd, brit, vf-f gr, sb ang-rnd, mod-w srt, mod cmt, cons, v sl calic cmt, occ (10%) sily sh strgs, rr LS, tr glau, occ dissim pyr, yel - gn o floor, O Show: v fast	90% SS: lt-dk brn, wht ip, trnsl-clr gr, mod - v hd, brit, vf-f gr, sb ang-rnd, mod-w srt, mod cmt, cons, v sl calic cmt, occ (10%) sily sh strgs, rr LS, tr glau, occ dissim pyr, yel - gn o floor, O Show: v fast	80% SS: lt-dk brn, wht ip, trnsl-clr gr, rr 20% SLTY SH: med - dk gy, blk, mod fr glau, occ dissim pyr, dul gn o floor, O St
---	---	--







MD: 12,604 '  
TVD: 7,403.9'  
Inclination: 90.52 °  
Azimuth: 359.8 °  
VS: 4,784.3 '

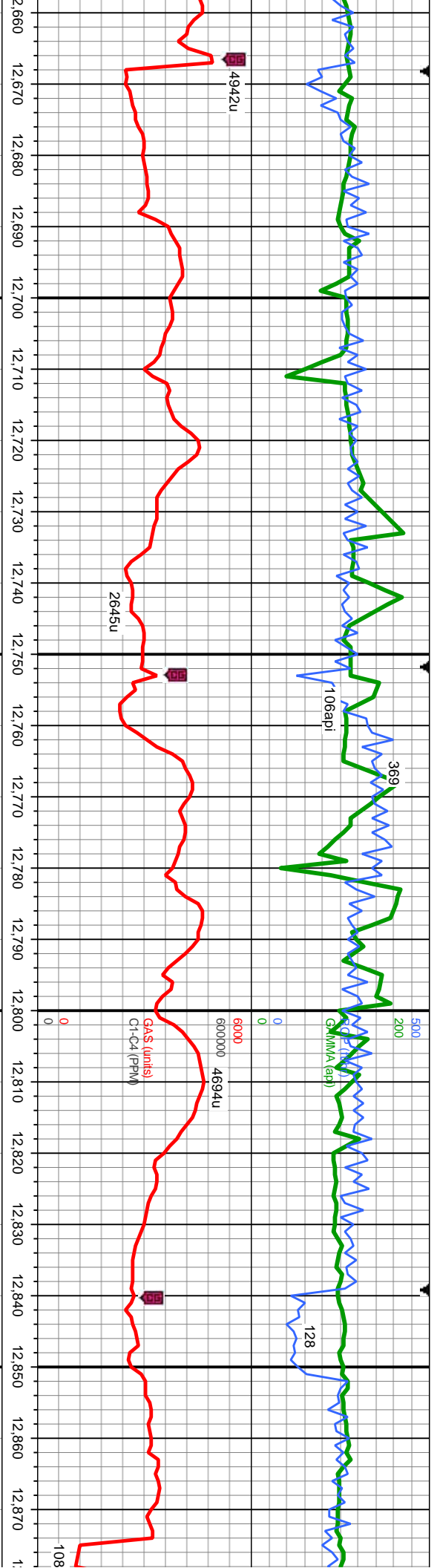
mod - v hd, brit, vf-f gr, sb ang-rnd, mod-w srt, mod cnt, cons, tr  
cm, brit, ply - sb ply, sb wxy - gt tex, arg - sily mtk, v sl calc, tr  
now: v fast disse, stmg, v bri bl wh mky cut, v bri bl wh ring

80% SS: lt-dk brn, wht lp, tnsi-clr gr, mod - v hd, brit, vf-f gr, sb ang-rnd, mod-w srt, mod cnt, cons,  
20% SLTY SH: med - dk gy, blk, mod frm, brit, ply - sb ply, sb wxy - gt tex, arg - sily mtk, v sl calc, tr  
glau, occ dissim pyr, dul gn o flor; O Show: mod - fast disse, mod stmg, mod bri bl wh mky cut, v thk,  
v bri bl wh cut

85% SS: lt-dk brn, wht lp, tnsi-clr gr, mod - v hd, brit, vf-f gr,  
15% SLTY SH: med - dk gy, blk, mod frm, brit, ply - sb ply,  
tr glau, tr dissim pyr, dul bl gn o flor; O Show: mod - fast disse,  
thk, v bri bl wh cut

7600

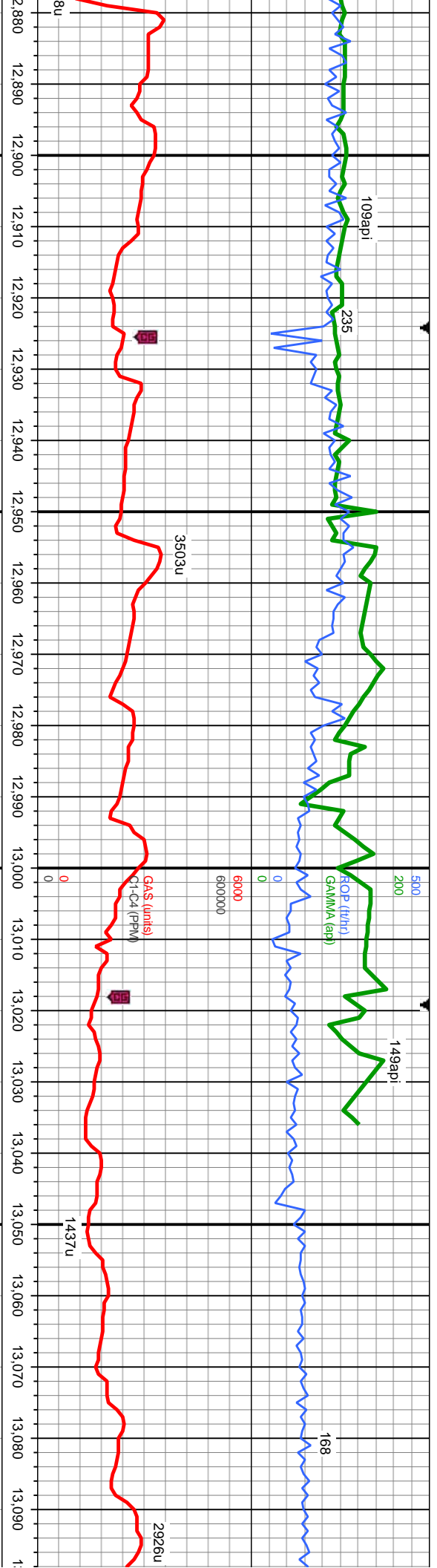




<p>- sb ang-rnd, mod-w srt, mod cnt, cons, sb wxy - sl gt tex, arg - stly mtz, sl calc, mod stmg, mod bri bl wh mky cut, v</p>	<p>86% SS: lt-dk brn, wht ip, trnsf-clr gr, mod - v hd, brit, vf-f gr, sb ang-rnd, mod-w srt, mod cnt, cons, 15% SLTY SH: med - dk gy, blk, mod frm, brit, pily - sb pily, sb wxy - sl gt tex, arg - stly mtz, sl calc, occ glau, occ dissim pyr, tr bent, tr dukl orng mnrl flor, dul bl gn o flor; O Show: fast difse, stmg, bri bl wh mky cut, v thk, v bri bl wh cut</p>	<p>90% SS: lt-dk brn, wht ip, trnsf-clr gr, mod - v hd, brit, vf-f gr, sb ang-rnd, mod-w srt, mod cnt, cons, sl calc cnt, occ (10%) stly sh strgs, tr glau, occ dissim pyr, no flor; O Show: fast c wh mky cut, v thk, v bri bl wh cut</p>
--	--	--







MD: 13,037  
TVD: 7,404.5  
Inclination: 89.32 -  
Azimuth: 358.06 -  
VS: 5,217.2

70% SS: lt-dk brn, wht ip, trnsf-clr gr, mod - v hd, brit, vf-f gr, sb ang-rnd, mod-w srt, mod cnt, cons, sl calc cnt, 25% LS: offwht - crm, bf - brn, mod - v frm, brit, sb plty - sb blk, v wxy tex, crpxl, occ (5%) silty sh strgs, tr glau, occ dissim pyr, dul gn o flor; O Show: fast difse, string, bri bl wh mky cut, v thk, v bri bl wh - v sl gn cut	
65% SS: lt-dk brn, wht ip, trnsf-clr gr, mod - v hd, brit, vf-f gr, sb ang-rnd, mod-w srt, mod cnt, cons, sl calc cnt, 20% LS: offwht - crm, bf - brn, mod - v frm, brit, sb plty - sb blk, v wxy tex, crpxl, 15% S.L.T.Y SH: med - dk gy, blk, mod frm, brit, plty - sb plty, sb wxy - sl gt tex, arg - silty mtk, v calc, tr glau, occ dissim pyr, v fnt gn flor; O Show: fast difse, string, bri bl wh mky cut, v thk, v bri bl wh cut	



Hole Depth Reset to 13103' MD

WELL TD @ 13103' MD  
08:37 HRS 01/12/2014

THANK YOU FOR USING  
COLUMBINE LOGGING INC

13.100 13.110 13.120 13.130 13.140 13.150

