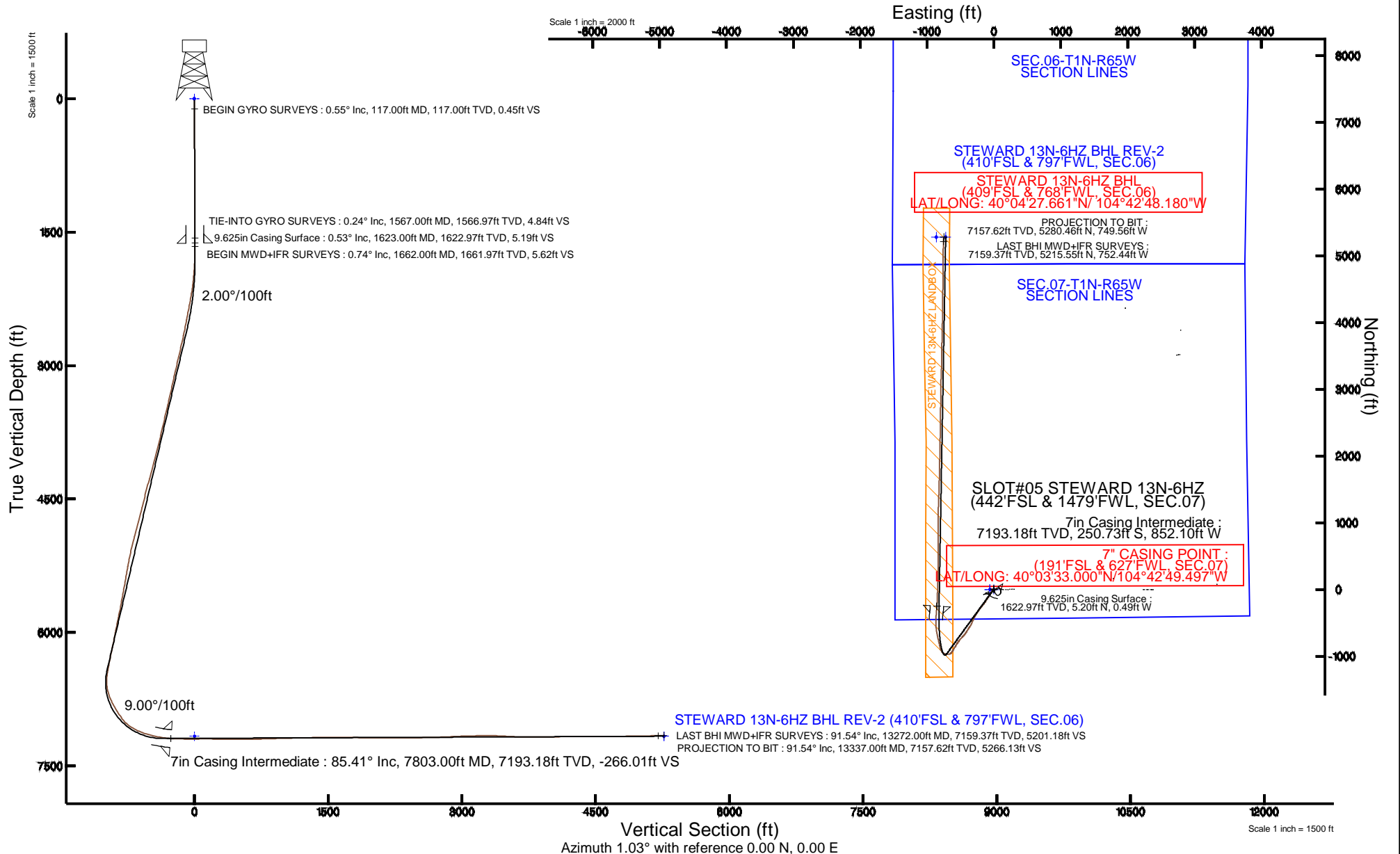


KERR-MCGEE OIL & GAS ONSHORE LP

Location: COLORADO Slot: SLOT#05 STEWARD 13N-6HZ (442'FSL & 1479'FWL, SEC.07)
 Field: WELD COUNTY (KERR MCGEE) Well: STEWARD 13N-6HZ
 Facility: SEC.07-T1N-R65W Wellbore: STEWARD 13N-6HZ PWB

Plot reference wellpath is STEWARD 13N-6HZ (REV-A.0) PWP

True vertical depths are referenced to XTREME 8 (17KB) (RKB)	Grid System: NAD83 / Lambert Colorado SP, Northern Zone (501), US feet
Measured depths are referenced to XTREME 8 (17KB) (RKB)	North Reference: True north
XTREME 8 (17KB) (RKB) to Mean Sea Level: 5021 feet	Scale: True distance
Mean Sea Level to Mud line (At Slot: SLOT#05 STEWARD 13N-6HZ (442'FSL & 1479'FWL, SEC.07)): 0 feet	Depths are in feet
Coordinates are in feet referenced to Slot	Created by: amarc on 12/30/2014



REFERENCE WELLPATH IDENTIFICATION			
Operator	KERR-MCGEE OIL & GAS ONSHORE LP	Slot	SLOT#05 STEWARD 13N-6HZ (442'FSL & 1479'FWL, SEC.07)
Area	COLORADO	Well	STEWARD 13N-6HZ
Field	WELD COUNTY (KERR MCGEE)	Wellbore	STEWARD 13N-6HZ AWB (117'-13337'MD)
Facility	SEC.07-T1N-R65W		

REPORT SETUP INFORMATION			
Projection System	NAD83 / Lambert Colorado SP, Northern Zone (501), US feet	Software System	WellArchitect® 4.0.0
North Reference	True	User	Amarcar
Scale	0.999962	Report Generated	12/30/2014 at 2:45:04 PM
Convergence at slot	n/a	Database/Source file	WellArchitectDB/STEWARD_13N-6HZ_AWB_117_-13337_MD_.xml

WELLPATH LOCATION						
	Local coordinates		Grid coordinates		Geographic coordinates	
	North[ft]	East[ft]	Easting[US ft]	Northing[US ft]	Latitude	Longitude
Slot Location	-75.87	-3335.78	3220926.84	1265633.75	40°03'35.478"N	104°42'38.538"W
Facility Reference Pt			3224261.66	1265739.76	40°03'36.230"N	104°41'55.637"W
Field Reference Pt			3197771.84	1268891.29	40°04'09.600"N	104°47'36.000"W

WELLPATH DATUM			
Calculation method	Minimum curvature	XTREME 8 (17'KB) (RKB) to Facility Vertical Datum	5021.00ft
Horizontal Reference Pt	Slot	XTREME 8 (17'KB) (RKB) to Mean Sea Level	5021.00ft
Vertical Reference Pt	XTREME 8 (17'KB) (RKB)	XTREME 8 (17'KB) (RKB) to Mud Line at Slot (SLOT#05 STEWARD 13N-6HZ (442'FSL & 1479'FWL, SEC.07))	5021.00ft
MD Reference Pt	XTREME 8 (17'KB) (RKB)	Section Origin	N 0.00, E 0.00 ft
Field Vertical Reference	Mean Sea Level	Section Azimuth	1.03°

REFERENCE WELLPATH IDENTIFICATION

Operator	KERR-MCGEE OIL & GAS ONSHORE LP	Slot	SLOT#05 STEWARD 13N-6HZ (442'FSL & 1479'FWL, SEC.07)
Area	COLORADO	Well	STEWARD 13N-6HZ
Field	WELD COUNTY (KERR MCGEE)	Wellbore	STEWARD 13N-6HZ AWP (117'-13337'MD)
Facility	SEC.07-T1N-R65W		

WELLPATH DATA (122 stations) † = interpolated/extrapolated station

MD [ft]	Inclination [°]	Azimuth [°]	TVD [ft]	Vert Sect [ft]	North [ft]	East [ft]	Latitude	Longitude	DLS [°/100ft]	Comments
0.00†	0.000	341.070	0.00	0.00	0.00	0.00	40°03'35.478"N	104°42'38.538"W	0.00	
17.00	0.000	341.070	17.00	0.00	0.00	0.00	40°03'35.478"N	104°42'38.538"W	0.00	
117.00	0.550	341.070	117.00	0.45	0.45	-0.16	40°03'35.482"N	104°42'38.540"W	0.55	BEGIN GYRO SURVEYS
217.00	0.560	302.400	216.99	1.16	1.17	-0.72	40°03'35.490"N	104°42'38.547"W	0.37	
317.00	0.430	268.960	316.99	1.40	1.42	-1.51	40°03'35.492"N	104°42'38.557"W	0.31	
417.00	0.080	233.120	416.99	1.34	1.38	-1.94	40°03'35.492"N	104°42'38.563"W	0.37	
517.00	0.270	343.730	516.99	1.52	1.56	-2.06	40°03'35.493"N	104°42'38.565"W	0.31	
617.00	0.480	319.940	616.99	2.06	2.11	-2.40	40°03'35.499"N	104°42'38.569"W	0.26	
717.00	0.280	240.720	716.99	2.26	2.31	-2.88	40°03'35.501"N	104°42'38.575"W	0.51	
817.00	0.250	62.640	816.98	2.24	2.29	-2.90	40°03'35.501"N	104°42'38.575"W	0.53	
917.00	0.250	356.650	916.98	2.56	2.61	-2.72	40°03'35.504"N	104°42'38.573"W	0.27	
1017.00	0.210	8.370	1016.98	2.96	3.01	-2.71	40°03'35.508"N	104°42'38.573"W	0.06	
1117.00	0.250	69.160	1116.98	3.22	3.27	-2.48	40°03'35.510"N	104°42'38.570"W	0.24	
1217.00	0.540	32.150	1216.98	3.70	3.74	-2.02	40°03'35.515"N	104°42'38.564"W	0.37	
1317.00	0.140	49.000	1316.98	4.19	4.22	-1.68	40°03'35.520"N	104°42'38.560"W	0.41	
1417.00	0.360	89.900	1416.98	4.28	4.30	-1.27	40°03'35.521"N	104°42'38.554"W	0.27	
1517.00	0.420	33.660	1516.98	4.59	4.61	-0.76	40°03'35.524"N	104°42'38.548"W	0.37	
1567.00	0.240	32.150	1566.97	4.84	4.85	-0.60	40°03'35.526"N	104°42'38.546"W	0.36	TIE-INTO GYRO SURVEYS
1662.00	0.740	5.500	1661.97	5.62	5.63	-0.43	40°03'35.534"N	104°42'38.544"W	0.56	BEGIN MWD+IFR SURVEYS
1753.00	2.420	250.620	1752.94	5.53	5.57	-2.19	40°03'35.533"N	104°42'38.566"W	3.09	
1845.00	4.840	232.270	1844.76	2.43	2.55	-7.09	40°03'35.503"N	104°42'38.629"W	2.89	
1937.00	5.670	219.040	1936.37	-3.58	-3.35	-13.03	40°03'35.445"N	104°42'38.706"W	1.59	
2030.00	7.540	218.440	2028.75	-12.05	-11.70	-19.71	40°03'35.362"N	104°42'38.792"W	2.01	
2122.00	9.010	212.900	2119.79	-22.96	-22.48	-27.38	40°03'35.256"N	104°42'38.890"W	1.82	
2213.00	10.910	214.290	2209.42	-36.22	-35.57	-36.10	40°03'35.126"N	104°42'39.002"W	2.10	
2305.00	12.770	210.420	2299.46	-52.36	-51.54	-46.16	40°03'34.969"N	104°42'39.132"W	2.20	
2397.00	12.370	209.650	2389.25	-69.87	-68.87	-56.18	40°03'34.797"N	104°42'39.261"W	0.47	
2489.00	11.930	208.950	2479.19	-86.92	-85.75	-65.66	40°03'34.631"N	104°42'39.382"W	0.50	
2581.00	13.110	212.580	2569.00	-104.22	-102.87	-75.88	40°03'34.461"N	104°42'39.514"W	1.54	
2672.00	14.220	215.970	2657.43	-122.17	-120.61	-88.00	40°03'34.286"N	104°42'39.670"W	1.50	
2764.00	15.170	211.890	2746.42	-141.77	-139.98	-101.00	40°03'34.095"N	104°42'39.837"W	1.53	
2856.00	14.450	212.510	2835.36	-161.89	-159.88	-113.53	40°03'33.898"N	104°42'39.998"W	0.80	
2947.00	15.340	213.450	2923.30	-181.74	-179.50	-126.26	40°03'33.704"N	104°42'40.162"W	1.01	
3039.00	15.630	213.930	3011.96	-202.42	-199.93	-139.89	40°03'33.502"N	104°42'40.337"W	0.34	
3130.00	15.750	220.000	3099.58	-222.31	-219.57	-154.67	40°03'33.308"N	104°42'40.527"W	1.81	
3221.00	15.080	218.740	3187.30	-241.28	-238.26	-170.02	40°03'33.123"N	104°42'40.725"W	0.82	
3312.00	16.130	218.380	3274.95	-260.69	-257.40	-185.28	40°03'32.934"N	104°42'40.921"W	1.16	
3399.00	15.240	216.800	3358.71	-279.58	-276.03	-199.63	40°03'32.750"N	104°42'41.105"W	1.13	
3484.00	16.730	216.750	3440.42	-298.58	-294.78	-213.64	40°03'32.565"N	104°42'41.286"W	1.75	
3657.00	15.010	213.730	3606.82	-337.65	-333.37	-240.98	40°03'32.184"N	104°42'41.637"W	1.10	
3829.00	15.560	212.180	3772.74	-376.13	-371.42	-265.64	40°03'31.808"N	104°42'41.954"W	0.40	
4002.00	15.550	207.450	3939.41	-416.76	-411.64	-288.68	40°03'31.410"N	104°42'42.251"W	0.73	
4175.00	15.570	204.340	4106.07	-458.85	-453.37	-308.94	40°03'30.998"N	104°42'42.511"W	0.48	
4346.00	17.110	201.650	4270.16	-503.47	-497.66	-327.68	40°03'30.560"N	104°42'42.752"W	1.00	
4517.00	16.280	211.280	4433.98	-547.73	-541.54	-349.41	40°03'30.126"N	104°42'43.032"W	1.69	

REFERENCE WELLPATH IDENTIFICATION			
Operator	KERR-MCGEE OIL & GAS ONSHORE LP	Slot	SLOT#05 STEWARD 13N-6HZ (442'FSL & 1479'FWL, SEC.07)
Area	COLORADO	Well	STEWARD 13N-6HZ
Field	WELD COUNTY (KERR MCGEE)	Wellbore	STEWARD 13N-6HZ AWB (117'-13337'MD)
Facility	SEC.07-T1N-R65W		

WELLPATH DATA (122 stations) † = interpolated/extrapolated station										
MD [ft]	Inclination [°]	Azimuth [°]	TVD [ft]	Vert Sect [ft]	North [ft]	East [ft]	Latitude	Longitude	DLS [°/100ft]	Comments
4689.00	16.230	216.400	4599.12	-588.16	-581.49	-376.20	40°03'29.732"N	104°42'43.376"W	0.83	
4859.00	17.540	210.440	4761.80	-629.85	-622.70	-403.28	40°03'29.324"N	104°42'43.724"W	1.28	
5029.00	17.990	216.700	4923.71	-673.50	-665.84	-431.95	40°03'28.898"N	104°42'44.093"W	1.15	
5200.00	16.690	223.490	5086.95	-713.07	-704.83	-464.63	40°03'28.513"N	104°42'44.513"W	1.41	
5370.00	13.520	222.340	5251.05	-746.02	-737.24	-494.82	40°03'28.192"N	104°42'44.902"W	1.87	
5541.00	12.140	216.530	5417.79	-775.67	-766.47	-518.99	40°03'27.904"N	104°42'45.212"W	1.10	
5711.00	12.410	215.210	5583.90	-805.34	-795.76	-540.17	40°03'27.614"N	104°42'45.485"W	0.23	
5881.00	12.490	212.050	5749.91	-836.20	-826.26	-560.45	40°03'27.313"N	104°42'45.746"W	0.40	
5966.00	13.450	208.330	5832.74	-852.87	-842.76	-570.02	40°03'27.150"N	104°42'45.869"W	1.50	
6054.00	13.500	214.110	5918.32	-870.57	-860.27	-580.64	40°03'26.977"N	104°42'46.005"W	1.53	
6143.00	12.930	209.460	6004.96	-888.03	-877.54	-591.36	40°03'26.806"N	104°42'46.143"W	1.35	
6228.00	12.920	211.890	6087.81	-904.55	-893.89	-601.06	40°03'26.644"N	104°42'46.268"W	0.64	
6313.00	13.610	210.850	6170.54	-921.38	-910.54	-611.21	40°03'26.480"N	104°42'46.398"W	0.86	
6400.00	13.560	212.410	6255.11	-938.97	-927.94	-621.92	40°03'26.308"N	104°42'46.536"W	0.43	
6531.00	13.380	220.100	6382.52	-963.85	-952.50	-639.92	40°03'26.065"N	104°42'46.768"W	1.37	
6575.00	16.540	235.310	6425.04	-971.47	-959.97	-648.35	40°03'25.991"N	104°42'46.876"W	11.40	
6618.00	20.100	248.600	6465.87	-977.86	-966.15	-660.27	40°03'25.930"N	104°42'47.029"W	12.72	
6662.00	23.640	258.920	6506.71	-982.60	-970.61	-675.98	40°03'25.886"N	104°42'47.231"W	11.85	
6705.00	24.710	269.400	6545.96	-984.67	-972.36	-693.44	40°03'25.869"N	104°42'47.456"W	10.27	
6747.00	25.780	278.490	6583.96	-983.73	-971.10	-711.26	40°03'25.881"N	104°42'47.685"W	9.57	
6790.00	26.790	288.640	6622.53	-979.58	-966.62	-729.70	40°03'25.926"N	104°42'47.922"W	10.70	
6832.00	27.380	298.940	6659.95	-972.19	-958.92	-747.13	40°03'26.002"N	104°42'48.146"W	11.24	
6876.00	27.490	310.530	6699.03	-960.99	-947.42	-763.71	40°03'26.115"N	104°42'48.360"W	12.12	
6920.00	29.020	321.050	6737.81	-946.34	-932.51	-778.15	40°03'26.263"N	104°42'48.545"W	11.83	
6962.00	29.240	330.550	6774.51	-929.69	-915.64	-789.60	40°03'26.429"N	104°42'48.693"W	11.01	
7005.00	30.180	340.590	6811.88	-910.50	-896.29	-798.36	40°03'26.621"N	104°42'48.805"W	11.76	
7090.00	32.110	350.630	6884.68	-868.22	-853.82	-809.15	40°03'27.040"N	104°42'48.944"W	6.51	
7176.00	36.070	348.150	6955.89	-821.04	-806.47	-818.08	40°03'27.508"N	104°42'49.059"W	4.88	
7261.00	47.480	346.480	7019.18	-766.15	-751.34	-830.58	40°03'28.053"N	104°42'49.220"W	13.49	
7346.00	59.430	348.530	7069.70	-699.86	-684.77	-845.23	40°03'28.711"N	104°42'49.408"W	14.19	
7432.00	67.230	350.220	7108.28	-624.64	-609.30	-859.35	40°03'29.457"N	104°42'49.590"W	9.24	
7521.00	72.370	357.670	7139.04	-541.85	-526.33	-868.06	40°03'30.277"N	104°42'49.702"W	9.75	
7610.00	77.080	3.710	7162.50	-456.06	-440.55	-866.98	40°03'31.124"N	104°42'49.688"W	8.42	
7695.00	80.580	5.090	7178.96	-372.83	-357.42	-860.58	40°03'31.946"N	104°42'49.606"W	4.41	
7754.00	82.090	4.710	7187.85	-314.64	-299.31	-855.60	40°03'32.520"N	104°42'49.542"W	2.64	
7803.00†	85.414	3.522	7193.18	-266.01	-250.73	-852.10	40°03'33.000"N	104°42'49.497"W	7.20	7" CASING POINT
7861.00	89.350	2.130	7195.83	-208.11	-192.87	-849.25	40°03'33.572"N	104°42'49.460"W	7.20	
8125.00	90.370	2.460	7196.48	55.82	70.91	-838.67	40°03'36.179"N	104°42'49.324"W	0.41	
8477.00	88.540	0.220	7199.82	407.76	422.76	-830.44	40°03'39.656"N	104°42'49.218"W	0.82	
8563.00	89.750	0.020	7201.11	493.74	508.75	-830.26	40°03'40.505"N	104°42'49.216"W	1.43	
8652.00	91.240	359.540	7200.34	582.71	597.74	-830.61	40°03'41.385"N	104°42'49.221"W	1.76	
8830.00	91.390	359.350	7196.25	760.60	775.69	-832.33	40°03'43.143"N	104°42'49.243"W	0.14	
8917.00	91.790	358.390	7193.84	847.50	862.63	-834.04	40°03'44.003"N	104°42'49.265"W	1.20	
9002.00	91.660	0.190	7191.28	932.42	947.59	-835.10	40°03'44.842"N	104°42'49.278"W	2.12	
9090.00	91.560	359.920	7188.81	1020.37	1035.55	-835.01	40°03'45.711"N	104°42'49.277"W	0.33	

REFERENCE WELLPATH IDENTIFICATION			
Operator	KERR-MCGEE OIL & GAS ONSHORE LP	Slot	SLOT#05 STEWARD 13N-6HZ (442'FSL & 1479'FWL, SEC.07)
Area	COLORADO	Well	STEWARD 13N-6HZ
Field	WELD COUNTY (KERR MCGEE)	Wellbore	STEWARD 13N-6HZ AWP (117'-13337'MD)
Facility	SEC.07-T1N-R65W		

WELLPATH DATA (122 stations)										
MD [ft]	Inclination [°]	Azimuth [°]	TVD [ft]	Vert Sect [ft]	North [ft]	East [ft]	Latitude	Longitude	DLS [°/100ft]	Comments
9260.00	91.540	2.620	7184.21	1190.29	1205.43	-831.25	40°03'47.390"N	104°42'49.229"W	1.59	
9345.00	91.230	2.260	7182.16	1275.24	1290.33	-827.63	40°03'48.229"N	104°42'49.183"W	0.56	
9431.00	90.150	1.860	7181.12	1361.22	1376.27	-824.54	40°03'49.078"N	104°42'49.143"W	1.34	
9601.00	90.180	1.860	7180.63	1531.20	1546.18	-819.02	40°03'50.758"N	104°42'49.072"W	0.02	
9773.00	89.690	0.830	7180.83	1703.20	1718.13	-814.98	40°03'52.457"N	104°42'49.020"W	0.66	
9946.00	89.720	1.520	7181.72	1876.19	1891.09	-811.43	40°03'54.166"N	104°42'48.975"W	0.40	
10204.00	89.750	1.100	7182.91	2134.19	2149.01	-805.54	40°03'56.715"N	104°42'48.899"W	0.16	
10634.00	90.670	0.770	7181.33	2564.18	2578.95	-798.52	40°04'00.964"N	104°42'48.809"W	0.23	
10975.00	93.030	0.600	7170.33	2904.97	2919.72	-794.45	40°04'04.331"N	104°42'48.756"W	0.69	
11060.00	92.180	0.560	7166.46	2989.88	3004.63	-793.59	40°04'05.170"N	104°42'48.745"W	1.00	
11147.00	91.750	1.790	7163.48	3076.83	3091.56	-791.80	40°04'06.029"N	104°42'48.723"W	1.50	
11236.00	91.200	2.570	7161.19	3165.78	3180.46	-788.42	40°04'06.908"N	104°42'48.679"W	1.07	
11323.00	90.980	2.100	7159.53	3252.74	3267.38	-784.87	40°04'07.767"N	104°42'48.633"W	0.60	
11409.00	88.730	0.960	7159.75	3338.73	3353.34	-782.58	40°04'08.616"N	104°42'48.604"W	2.93	
11581.00	86.220	1.160	7167.33	3510.55	3525.13	-779.40	40°04'10.314"N	104°42'48.563"W	1.46	
11666.00	88.110	0.860	7171.53	3595.44	3610.01	-777.90	40°04'11.153"N	104°42'48.544"W	2.25	
11752.00	88.830	0.690	7173.83	3681.41	3695.97	-776.74	40°04'12.002"N	104°42'48.529"W	0.86	
11837.00	89.750	1.260	7174.88	3766.40	3780.95	-775.29	40°04'12.842"N	104°42'48.510"W	1.27	
11922.00	90.400	1.810	7174.77	3851.40	3865.92	-773.02	40°04'13.682"N	104°42'48.481"W	1.00	
12007.00	90.890	1.020	7173.81	3936.39	3950.88	-770.92	40°04'14.521"N	104°42'48.454"W	1.09	
12092.00	90.830	1.130	7172.54	4021.38	4035.86	-769.32	40°04'15.361"N	104°42'48.434"W	0.15	
12177.00	91.080	1.020	7171.12	4106.37	4120.83	-767.73	40°04'16.201"N	104°42'48.413"W	0.32	
12262.00	91.350	0.860	7169.32	4191.35	4205.80	-766.34	40°04'17.041"N	104°42'48.395"W	0.37	
12352.00	90.700	0.540	7167.71	4281.33	4295.78	-765.24	40°04'17.930"N	104°42'48.381"W	0.80	
12437.00	89.750	0.440	7167.37	4366.32	4380.78	-764.51	40°04'18.770"N	104°42'48.372"W	1.12	
12522.00	89.810	0.650	7167.70	4451.32	4465.77	-763.70	40°04'19.610"N	104°42'48.362"W	0.26	
12695.00	90.180	0.360	7167.72	4624.31	4638.76	-762.18	40°04'21.319"N	104°42'48.342"W	0.27	
12780.00	90.090	0.910	7167.52	4709.31	4723.76	-761.23	40°04'22.159"N	104°42'48.330"W	0.66	
13038.00	91.380	359.910	7164.21	4967.27	4981.72	-759.39	40°04'24.708"N	104°42'48.306"W	0.63	
13125.00	90.890	1.840	7162.48	5054.24	5068.69	-758.06	40°04'25.568"N	104°42'48.289"W	2.29	
13272.00	91.540	2.540	7159.37	5201.18	5215.55	-752.44	40°04'27.019"N	104°42'48.217"W	0.65	LAST BHI MWD+IFR SURVEYS
13337.00	91.540	2.540	7157.62	5266.13	5280.46	-749.56	40°04'27.661"N	104°42'48.180"W	0.00	PROJECTION TO BIT

REFERENCE WELLPATH IDENTIFICATION			
Operator	KERR-MCGEE OIL & GAS ONSHORE LP	Slot	SLOT#05 STEWARD 13N-6HZ (442'FSL & 1479'FWL, SEC.07)
Area	COLORADO	Well	STEWARD 13N-6HZ
Field	WELD COUNTY (KERR MCGEE)	Wellbore	STEWARD 13N-6HZ AWB (117'-13337'MD)
Facility	SEC.07-T1N-R65W		

HOLE & CASING SECTIONS -									
Ref Wellbore: STEWARD 13N-6HZ AWB (117'-13337'MD) Ref Wellpath: STEWARD 13N-6HZ AWP (117'-13337'MD)									
String/Diameter	Start MD [ft]	End MD [ft]	Interval [ft]	Start TVD [ft]	End TVD [ft]	Start N/S [ft]	Start E/W [ft]	End N/S [ft]	End E/W [ft]
13.5in Open Hole	17.00	1634.00	1617.00	17.00	1633.97	0.00	0.00	5.31	-0.47
9.625in Casing Surface	17.00	1623.00	1606.00	17.00	1622.97	0.00	0.00	5.20	-0.49
8.75in Open Hole	1634.00	7814.00	6180.00	1633.97	7193.99	5.31	-0.47	-239.78	-851.45
7in Casing Intermediate	17.00	7803.00	7786.00	17.00	7193.18	0.00	0.00	-250.73	-852.10
6.125in Open Hole	7814.00	13337.00	5523.00	7193.99	7157.62	-239.78	-851.45	5280.46	-749.56

TARGETS										
Name	MD [ft]	TVD [ft]	North [ft]	East [ft]	Grid East [US ft]	Grid North [US ft]	Latitude	Longitude	Shape	
SEC.06-T1N-R65W SECTION LINES		0.00	-0.40	-60.18	3220866.66	1265632.81	40°03'35.474"N	104°42'39.312"W	polygon	
SEC.07-T1N-R65W SECTION LINES		0.00	-0.40	-60.18	3220866.66	1265632.81	40°03'35.474"N	104°42'39.312"W	polygon	
STEWARD 13N-6HZ BHL ON PLAT REV-1 (410'FSL & 657'FWL, SEC.06)		7166.00	5281.12	-860.88	3220019.02	1270906.79	40°04'27.667"N	104°42'49.612"W	point	
STEWARD 13N-6HZ BHL REV-2 (410'FSL & 797'FWL, SEC.06)		7166.00	5281.12	-720.88	3220159.01	1270908.04	40°04'27.667"N	104°42'47.811"W	point	
STEWARD 13N-6HZ LANDBOX		7166.00	0.00	0.00	3220926.84	1265633.75	40°03'35.478"N	104°42'38.538"W	polygon	

WELLPATH COMPOSITION -					
Ref Wellbore: STEWARD 13N-6HZ AWB (117'-13337'MD) Ref Wellpath: STEWARD 13N-6HZ AWP (117'-13337'MD)					
Start MD [ft]	End MD [ft]	Positional Uncertainty Model	Log Name/Comment	Wellbore	
17.00	1567.00	Generic gyro - continuous (Standard)	MS ENERGY GYRO SURVEYS 13.5" <117-1567>	STEWARD 13N-6HZ AWB (117'-13337'MD)	
1567.00	7754.00	NaviTrak (MAGCORR,IFR)	BHI MWD+IFR SURVEYS 8.75" <1662-7754>	STEWARD 13N-6HZ AWB (117'-13337'MD)	
7754.00	13272.00	NaviTrak (MAGCORR,IFR)	BHI MWD+IFR SURVEYS 6.125" <7861-13272>	STEWARD 13N-6HZ AWB (117'-13337'MD)	
13272.00	13337.00	Blind Drilling (std)	Projection to bit	STEWARD 13N-6HZ AWB (117'-13337'MD)	

REFERENCE WELLPATH IDENTIFICATION			
Operator	KERR-MCGEE OIL & GAS ONSHORE LP	Slot	SLOT#05 STEWARD 13N-6HZ (442'FSL & 1479'FWL, SEC.07)
Area	COLORADO	Well	STEWARD 13N-6HZ
Field	WELD COUNTY (KERR MCGEE)	Wellbore	STEWARD 13N-6HZ AWB (117'-13337'MD)
Facility	SEC.07-T1N-R65W		

WELLPATH COMMENTS				
MD [ft]	Inclination [°]	Azimuth [°]	TVD [ft]	Comment
117.00	0.550	341.070	117.00	BEGIN GYRO SURVEYS
1567.00	0.240	32.150	1566.97	TIE-INTO GYRO SURVEYS
1662.00	0.740	5.500	1661.97	BEGIN MWD+IFR SURVEYS
7803.00	85.414	3.522	7193.18	7" CASING POINT
13272.00	91.540	2.540	7159.37	LAST BHI MWD+IFR SURVEYS
13337.00	91.540	2.540	7157.62	PROJECTION TO BIT