

Radial Bond Log
Gamma-Ray
CCL

Company KERR-McGEE OIL & GAS ONSHORE LP
 Well HSR-ROEDER 14-7A
 Field WATTENBERG
 County WELD
 State COLORADO

Company KERR-McGEE OIL & GAS ONSHORE LP
 Well HSR-ROEDER 14-7A
 Field WATTENBERG
 County WELD State COLORADO

Location: API # : 05-123-15064 Other Services
 LAT:40.23480 LONG:-104.70930
 SE/SW
 SEC 7 TWP 3N RGE 65W
 Permanent Datum GL Elevation 4992'
 Log Measured From KB 10'
 Drilling Measured From KB Elevation
 K.B. 5002'
 D.F. 5001'
 G.L. 4992'

Date 4-2-2015
 Run Number ONE
 Depth Driller 8003'
 Depth Logger 4013'
 Bottom Logged Interval 4004'
 Top Log Interval Surface
 Open Hole Size 4.5
 Type Fluid WATER
 Density / Viscosity 1.0
 Max. Recorded Temp. 139 DEGF
 Estimated Cement Top 3928/394'
 Time Well Ready N/A
 Time Logger on Bottom N/A
 Equipment Number 4740
 Location GREELEY
 Recorded By N.POLLOCK
 Witnessed By AL

Borehole Record		Tubing Record					
Run Number	Bit	From	To	Size	Weight	From	To
ONE							
TWO							

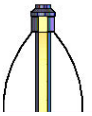
Casing Record	Size	Wgt/Ft	Top	Bottom
Surface String	8 5/8"	24#	SURFACE	631'
Prot. String				
Production String	4 1/2"	11.6#	SURFACE	7532'
Liner				

<<< Fold Here >>>

All interpretations are opinions based on inferences from electrical or other measurements and we cannot and do not guarantee the accuracy or correctness of any interpretation, and we shall not, except in the case of gross or willful negligence on our part, be liable or responsible for any loss, costs, damages, or expenses incurred or sustained by anyone resulting from any interpretation made by any of our officers, agents or employees. These interpretations are also subject to our general terms and conditions set out in our current Price Schedule.

Comments

FREE PIPE CALIBRATION 2120'(81mV)
 NOT CORRELATED
 LOGGED TO VERIFY CEMENT
 THANK YOU FOR USING WARRIOR.

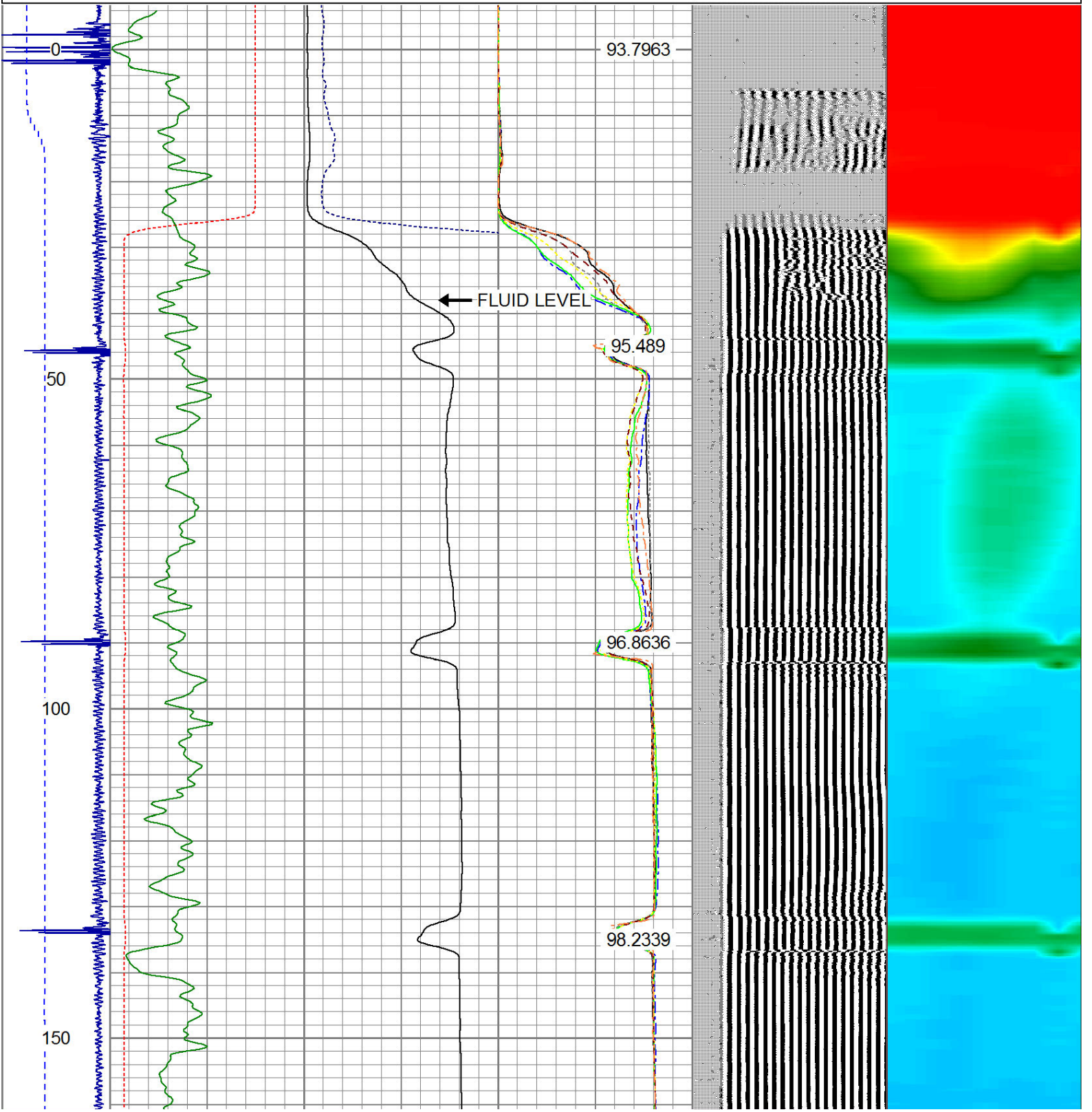
Sensor	Offset (ft)	Schematic	Description	Len (ft)	OD (in)	Wt (lb)
						

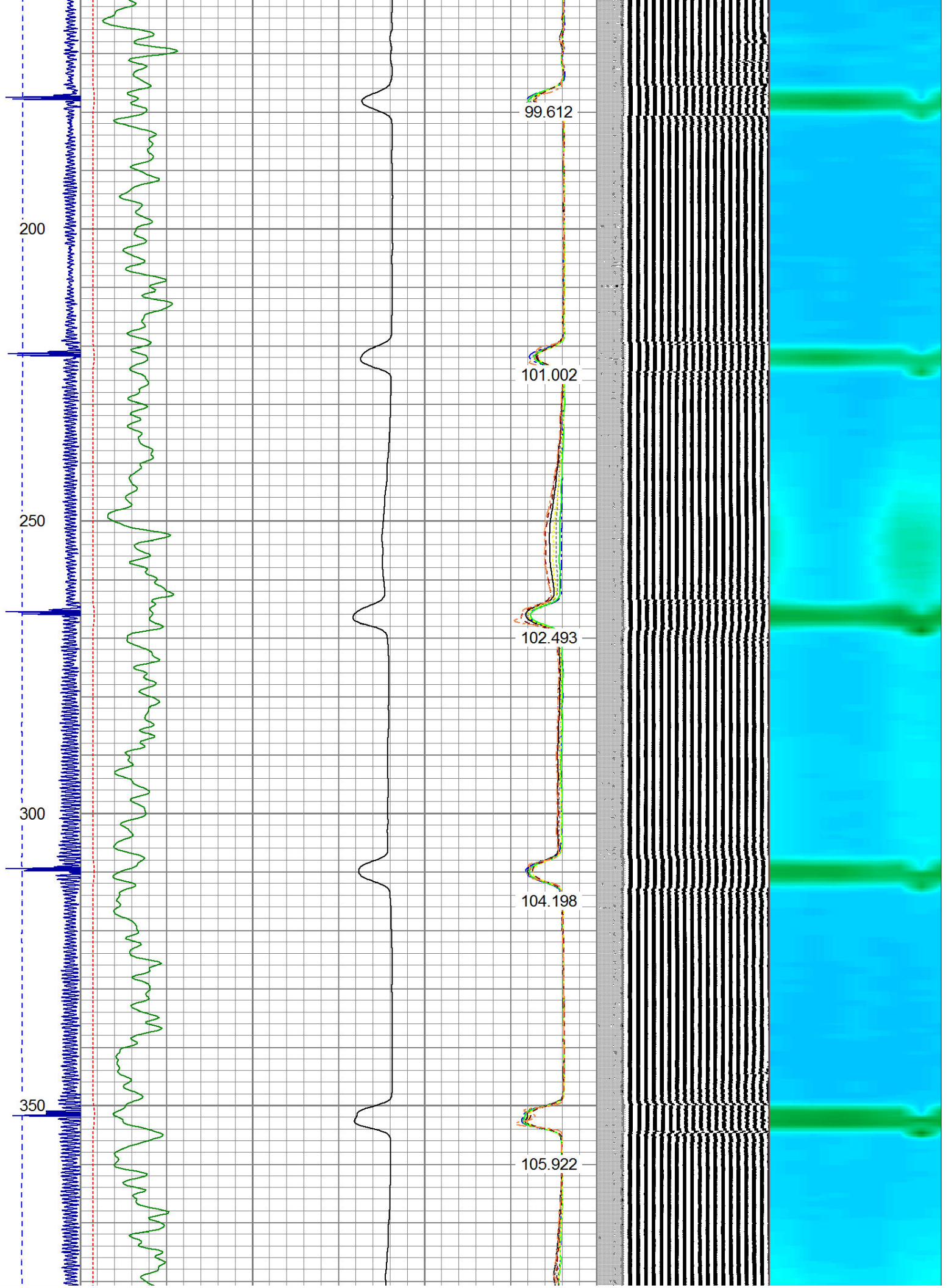
			PTS275	2.83	2.75	
HEADVOLT	16.25					
IntTemp	14.83					
WVF3FT	11.58		RBT-Probe (Base)	8.92	2.75	90.00
WVFCAL	11.58		Probe Radii Bond Tool with Digital Telemetry			
WVFS1	11.58					
WVFS2	11.58					
WVFS3	11.58					
WVFS4	11.58					
WVFS5	11.58					
WVFS6	11.58					
WVFS7	11.58					
WVFS8	11.58					
WVF5FT	10.58					
CNLSC	6.00		CNT-Probe_B (275)	3.00	2.75	40.00
CNSSC	5.17		6 bow centralizer			
CCL	3.64					
GR	0.90		GR-Probe (275)	4.33	2.75	30.00
			Probe 2.75"			

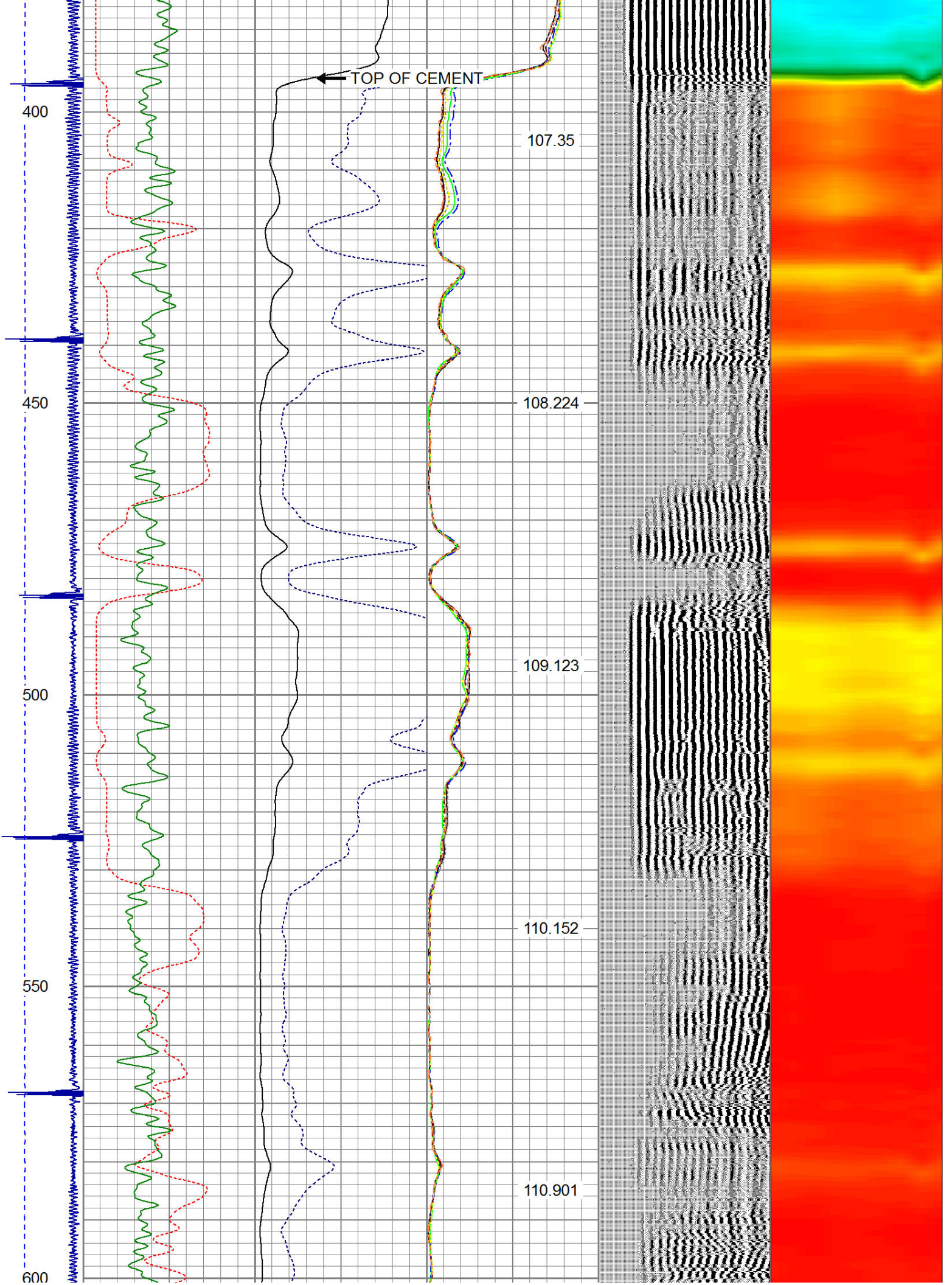
Dataset: roeder 14-7.db: field/well/run1/pass4
 Total Length: 19.08 ft
 Total Weight: 160.00 lb
 O.D.: 2.75 in

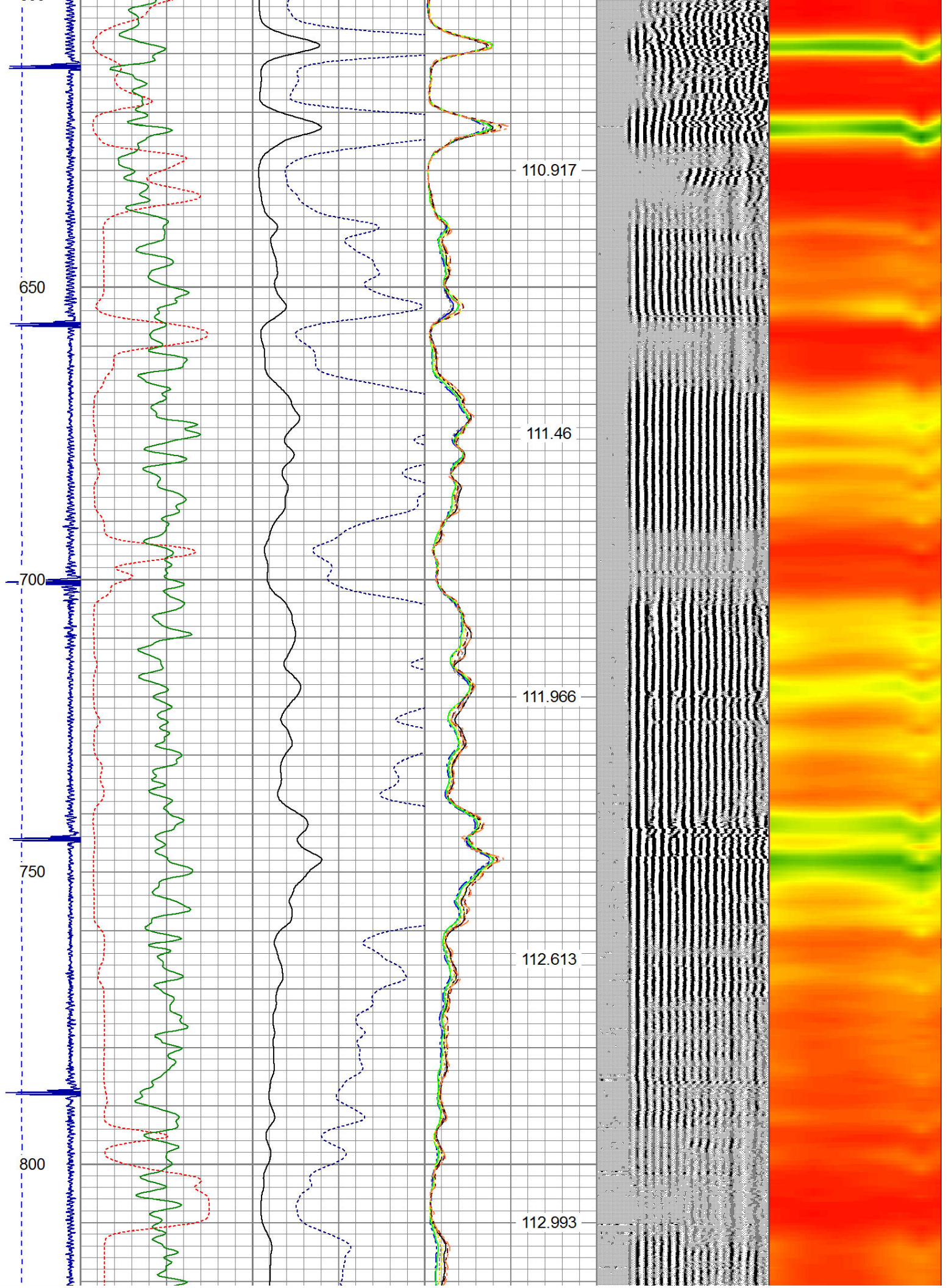
Database File: roeder 14-7.db
 Dataset Pathname: pass4
 Presentation Format: ips_rbt

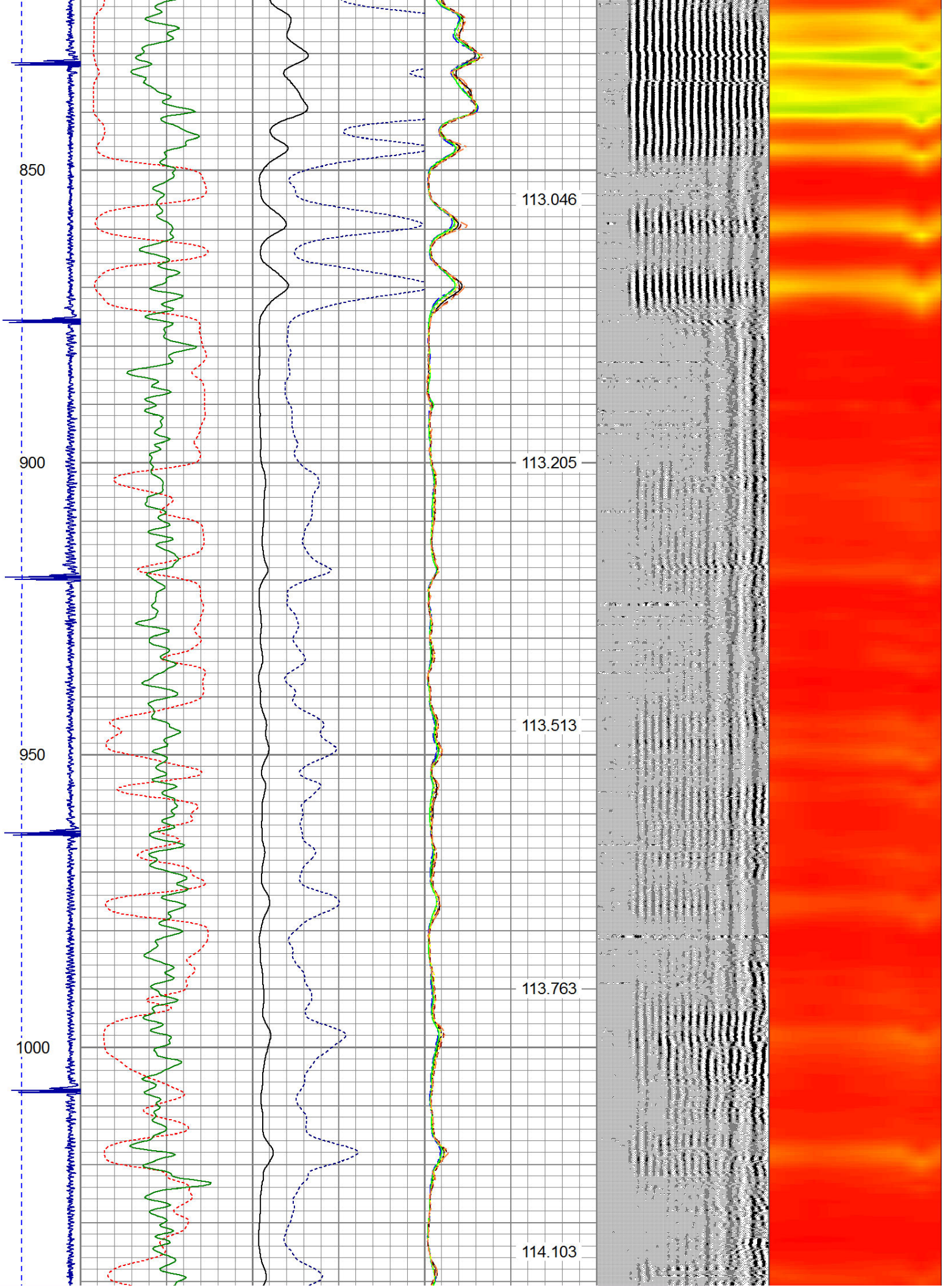
-9	CCL	1	200	TT (usec)	1000	0	AMP (mV)	100	0	AMPS1	100	200	VDL	1200	1	Cement Map	8
	LSPD		0	GR (GAPI)	200	0	AMPx5 (mV)	20	0	AMPS2	100				1		100
	(ft/min)		200	GR (GAPI)	400				0	AMPS4	100						
0									0	AMPS5	100						
									0	AMPS6	100						
									0	AMPS7	100						
									0	AMPS8	100						
										IntTemp							
										(degF)							

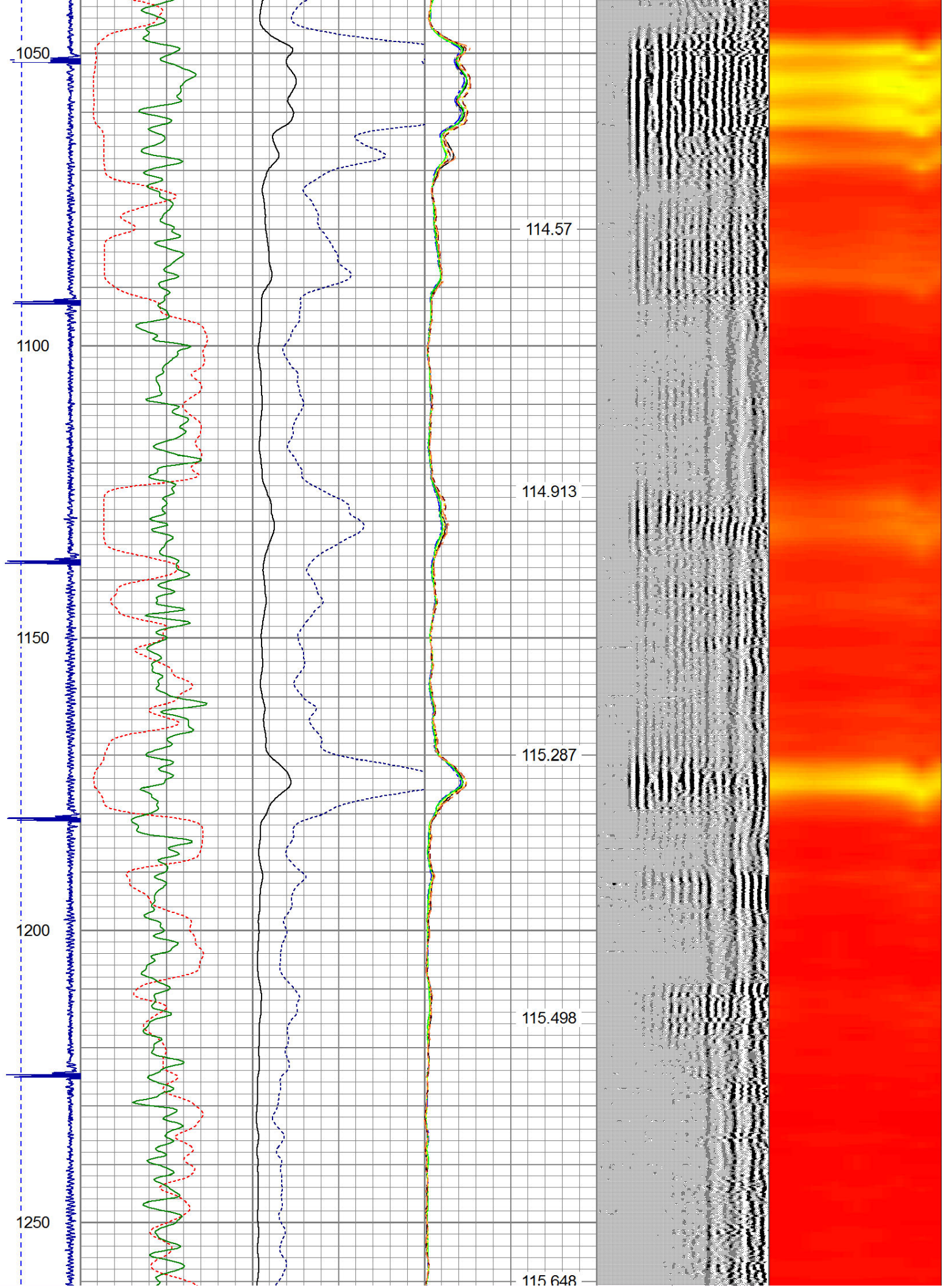


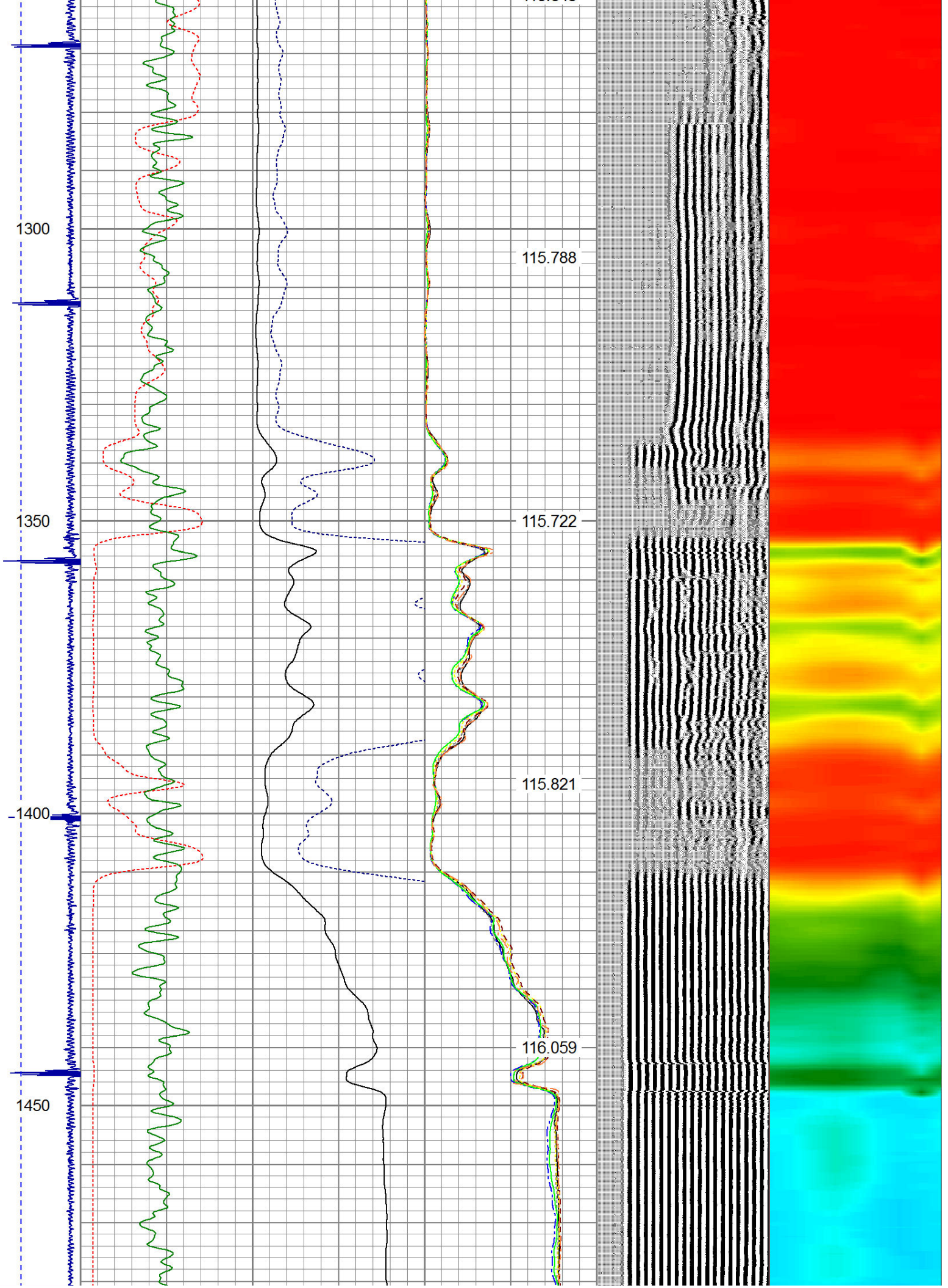


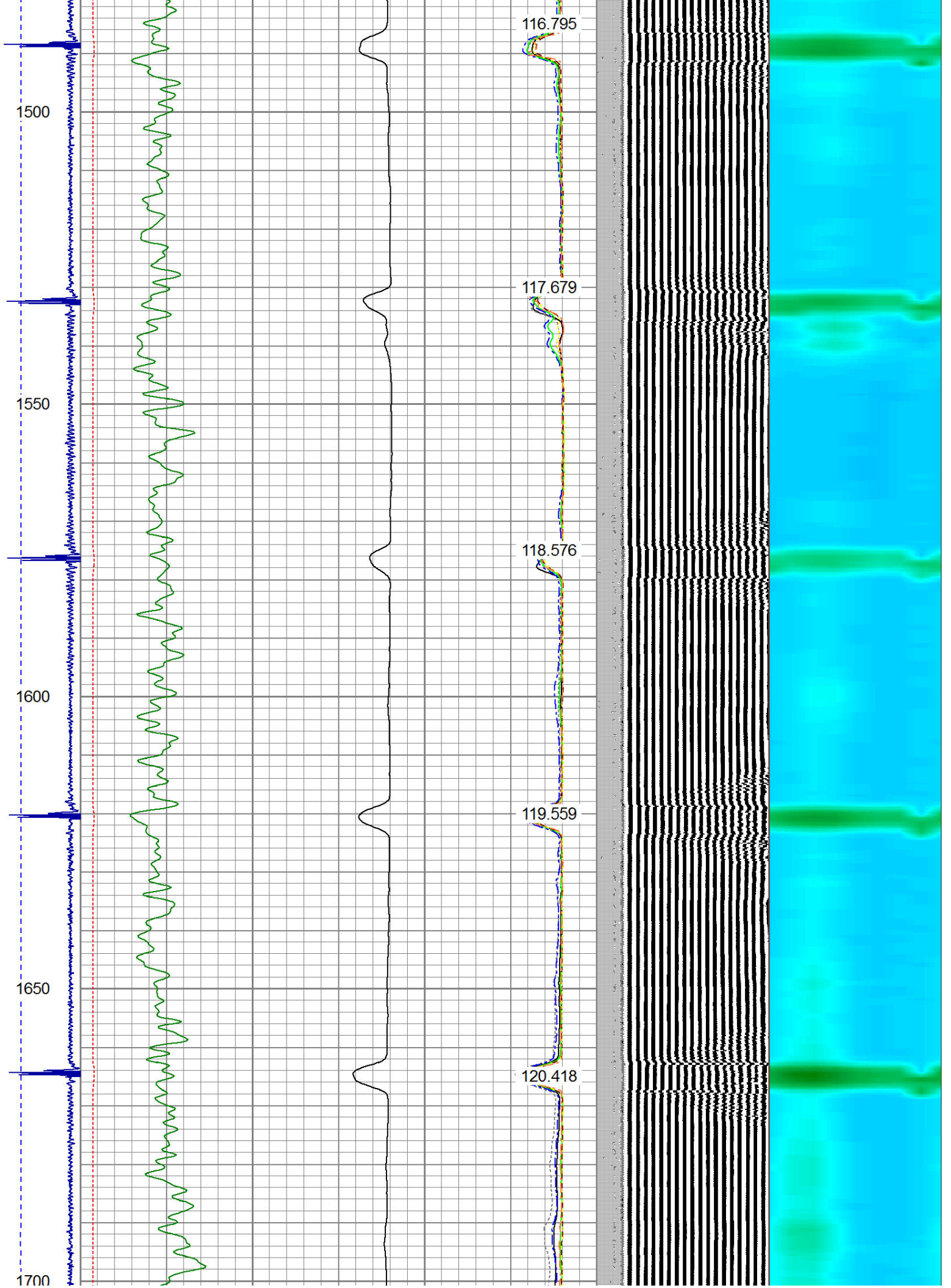


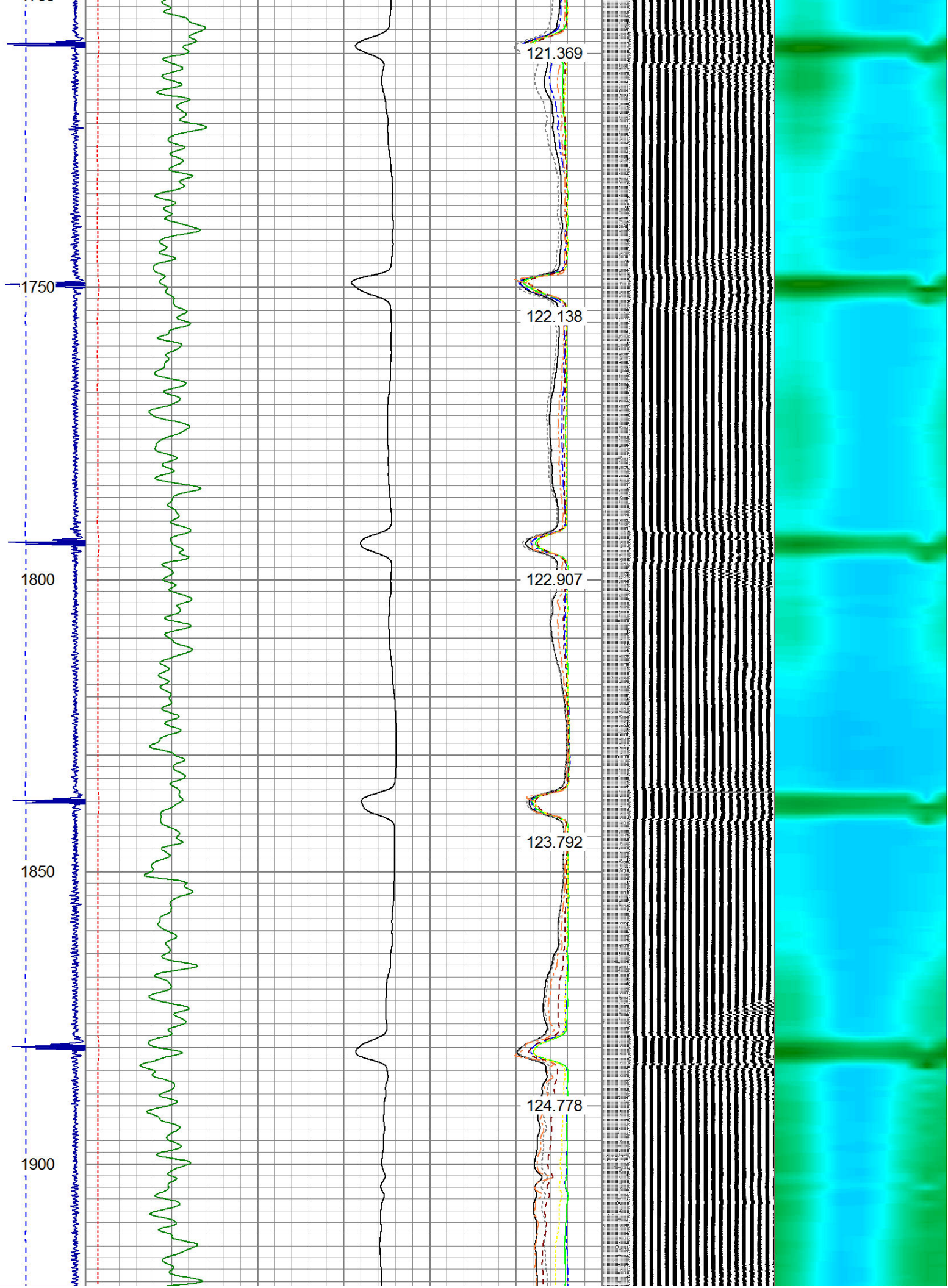


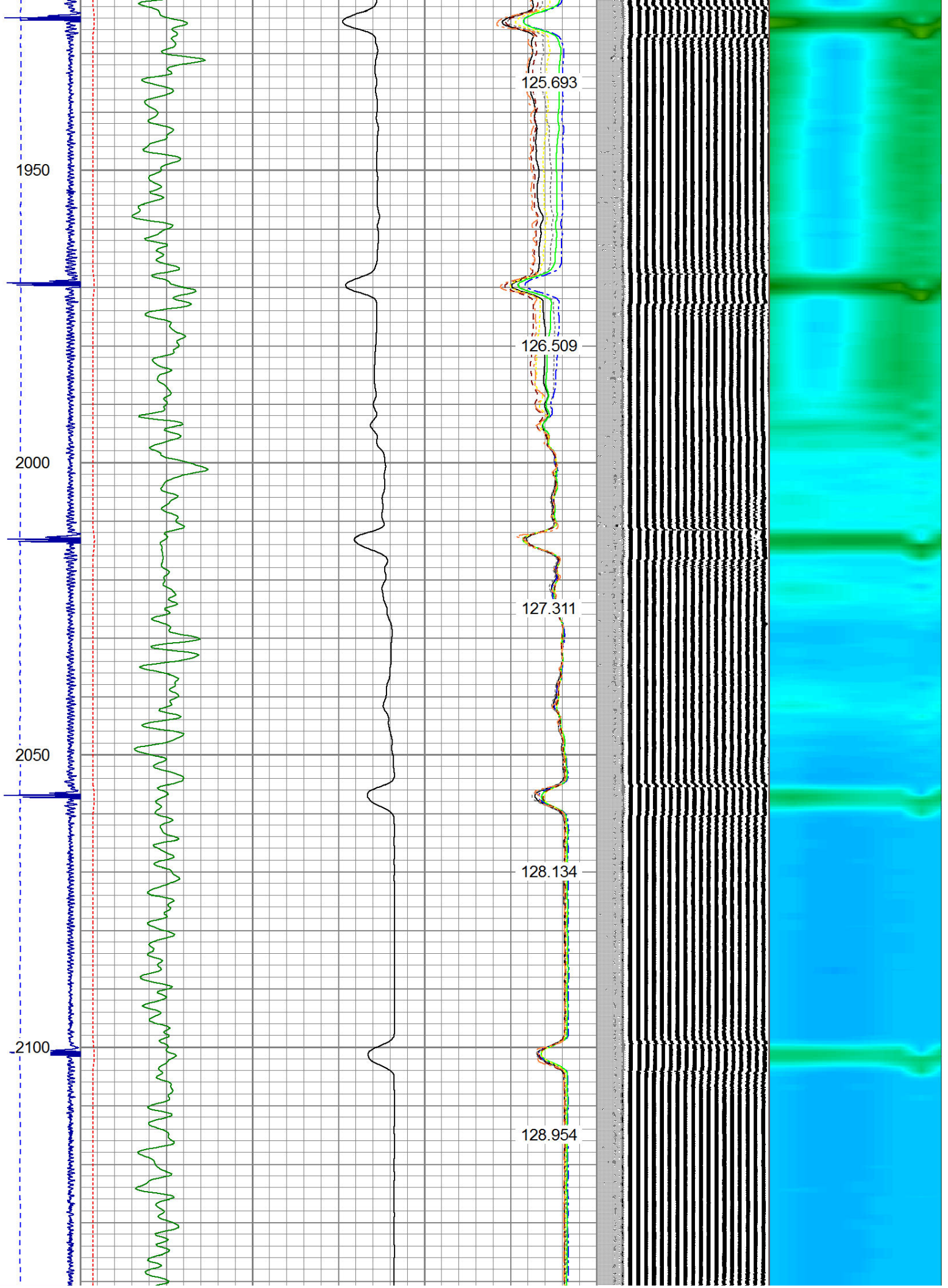


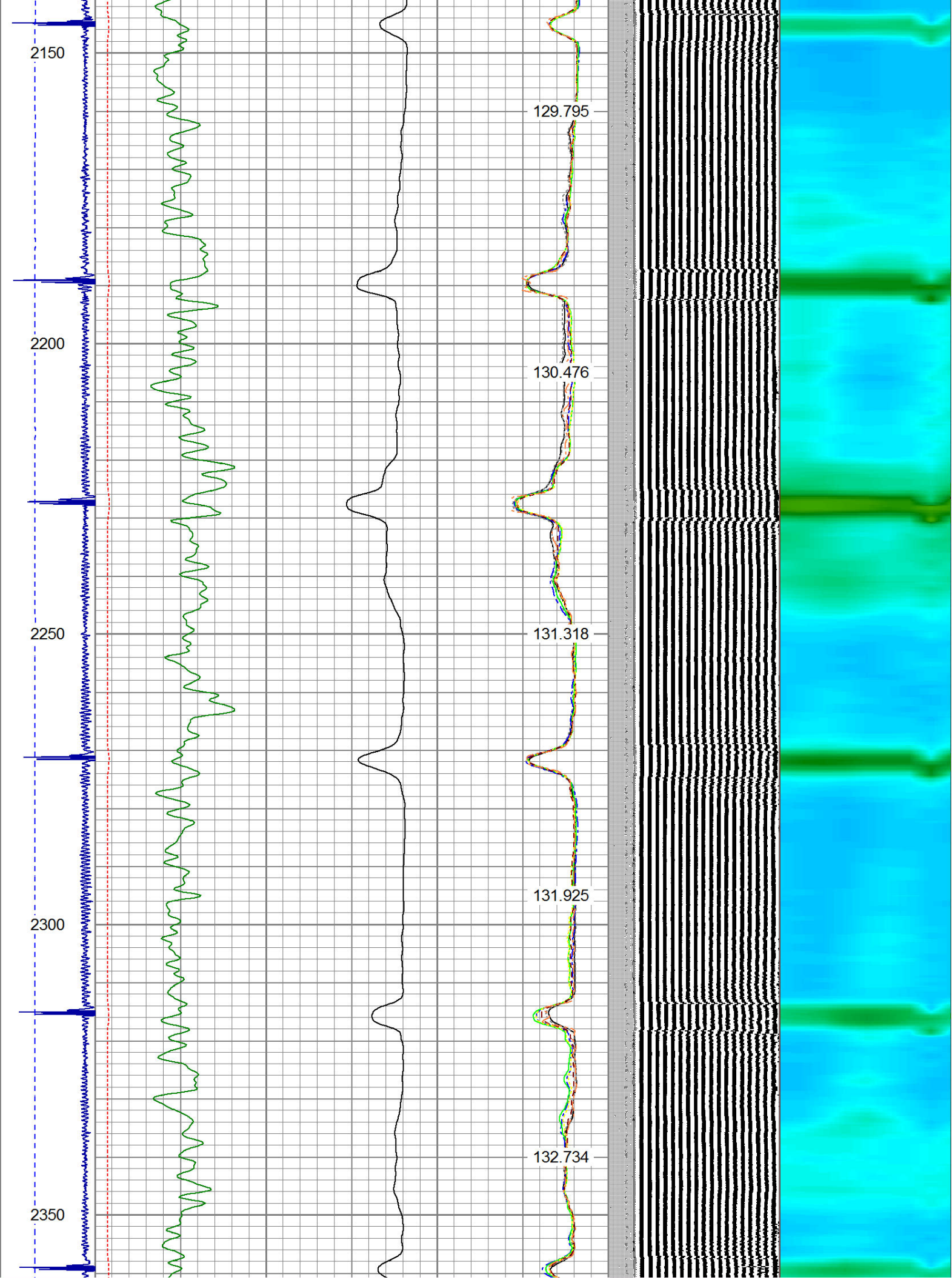


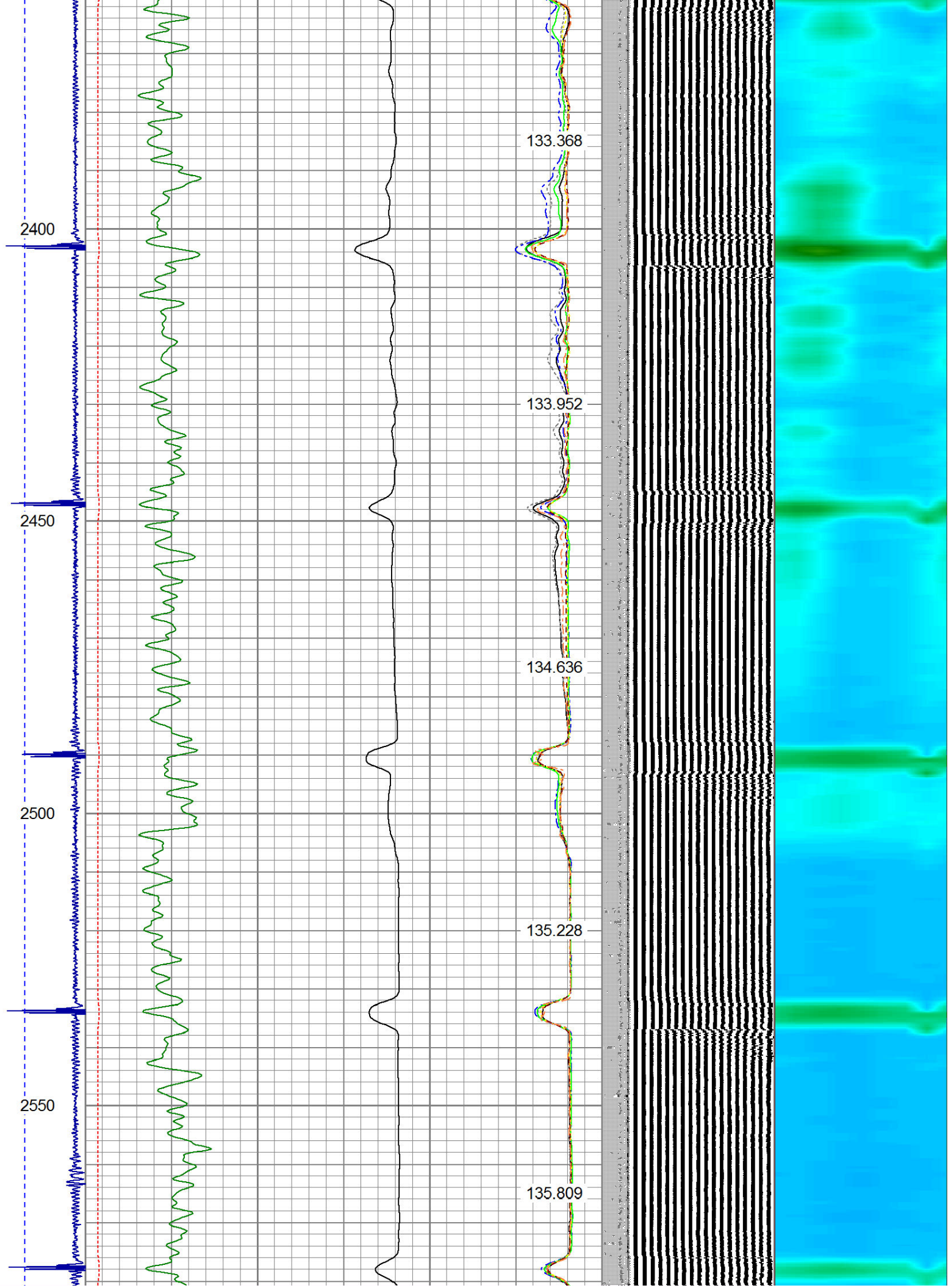


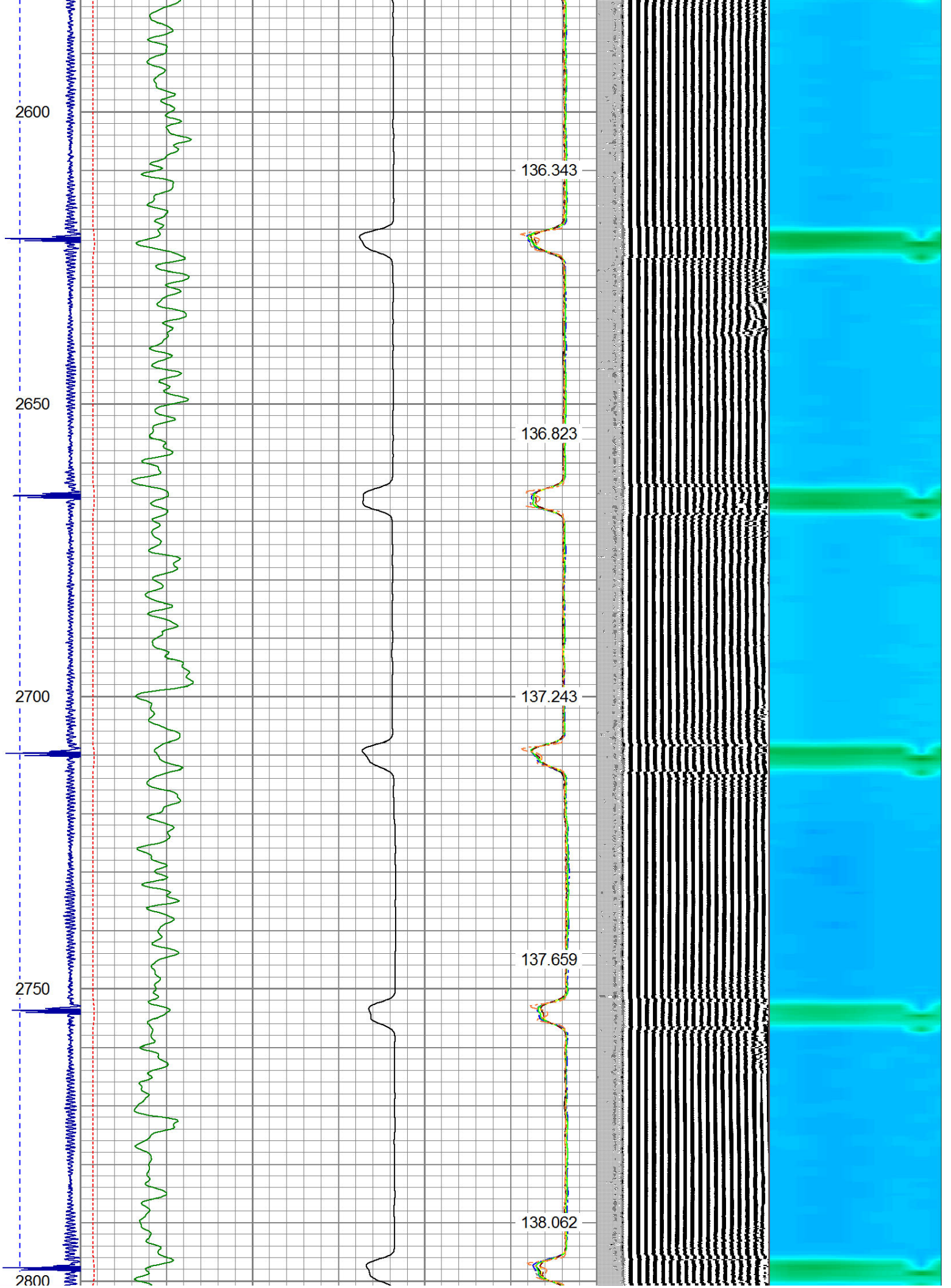


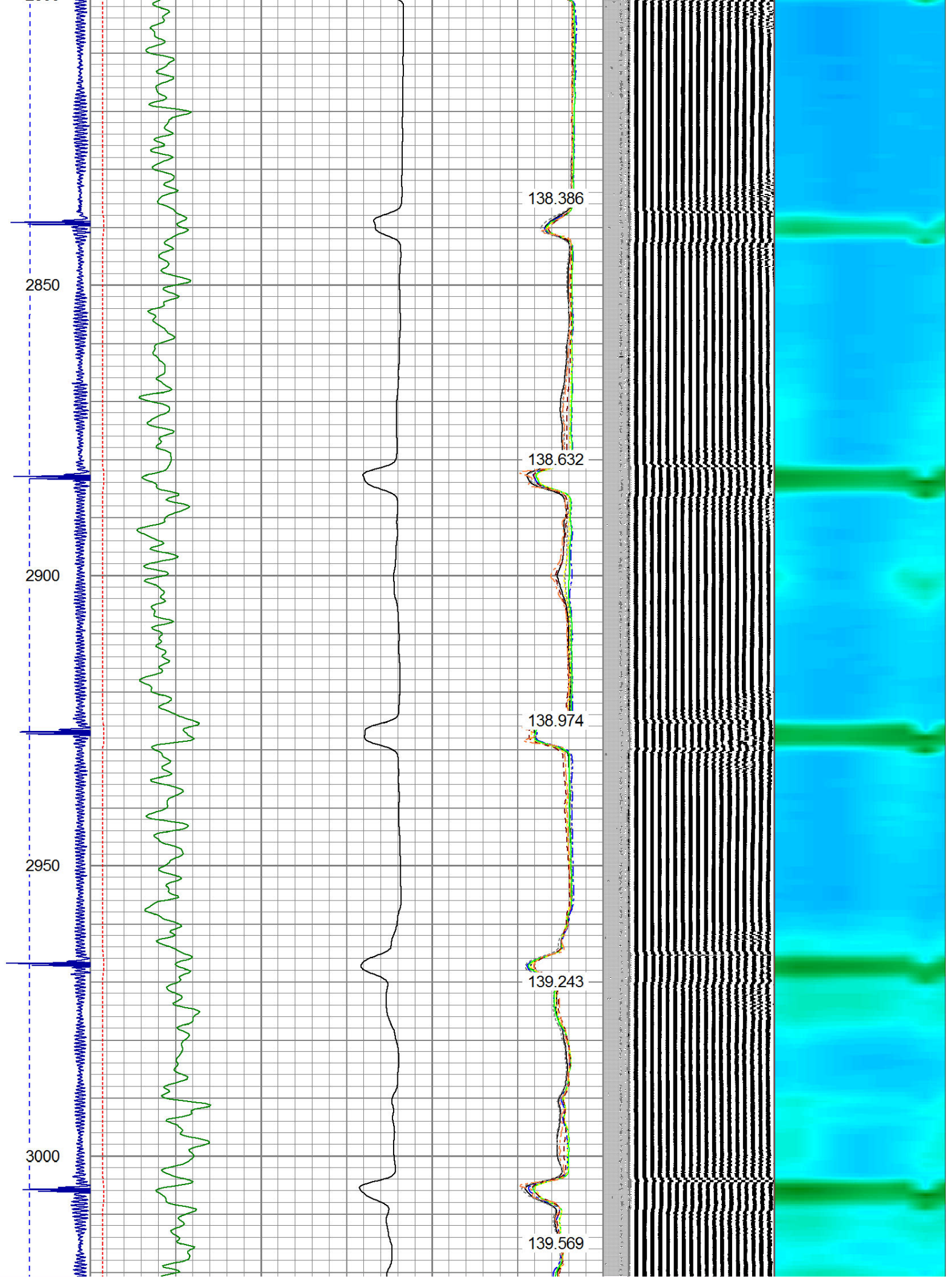


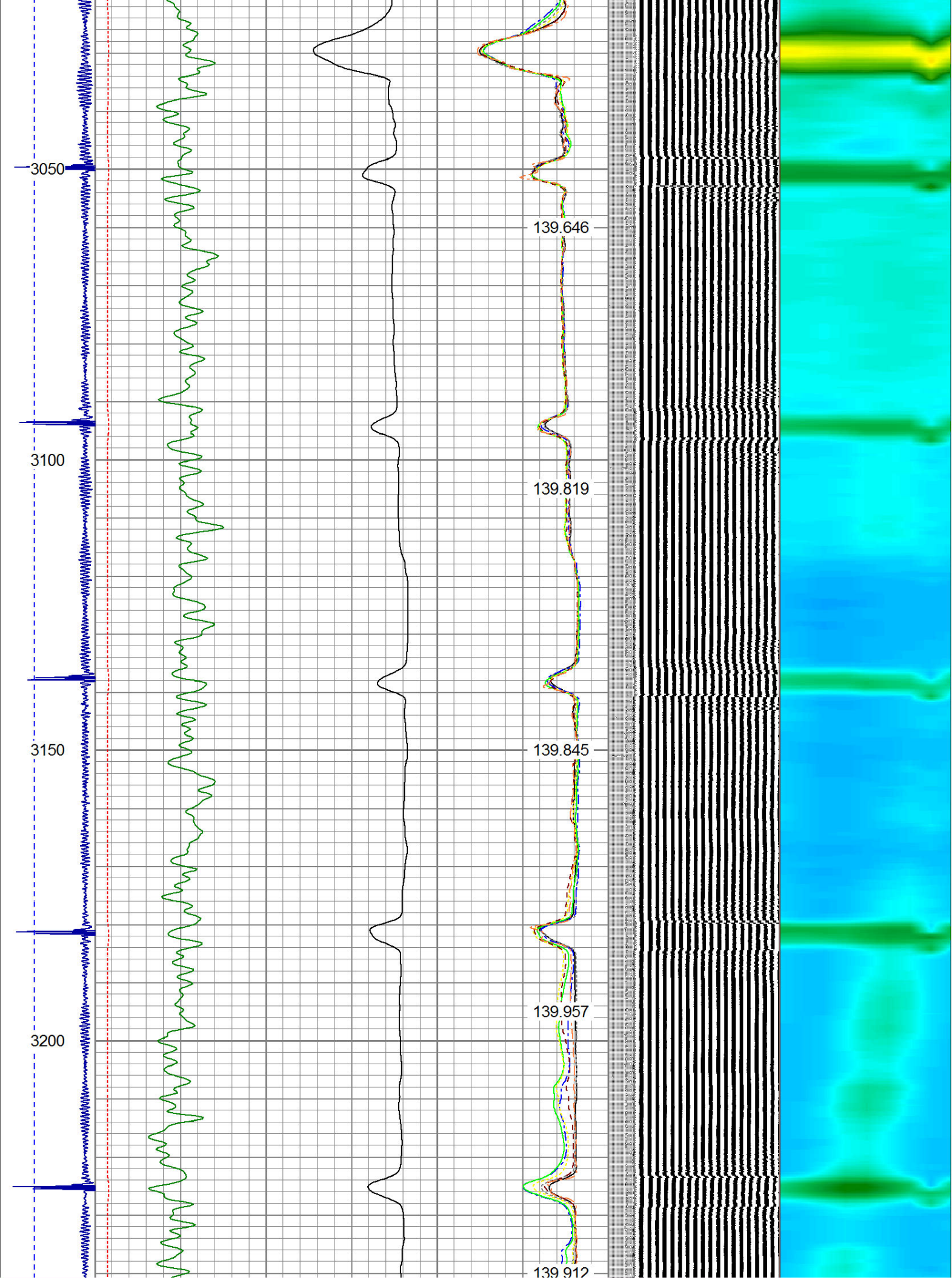


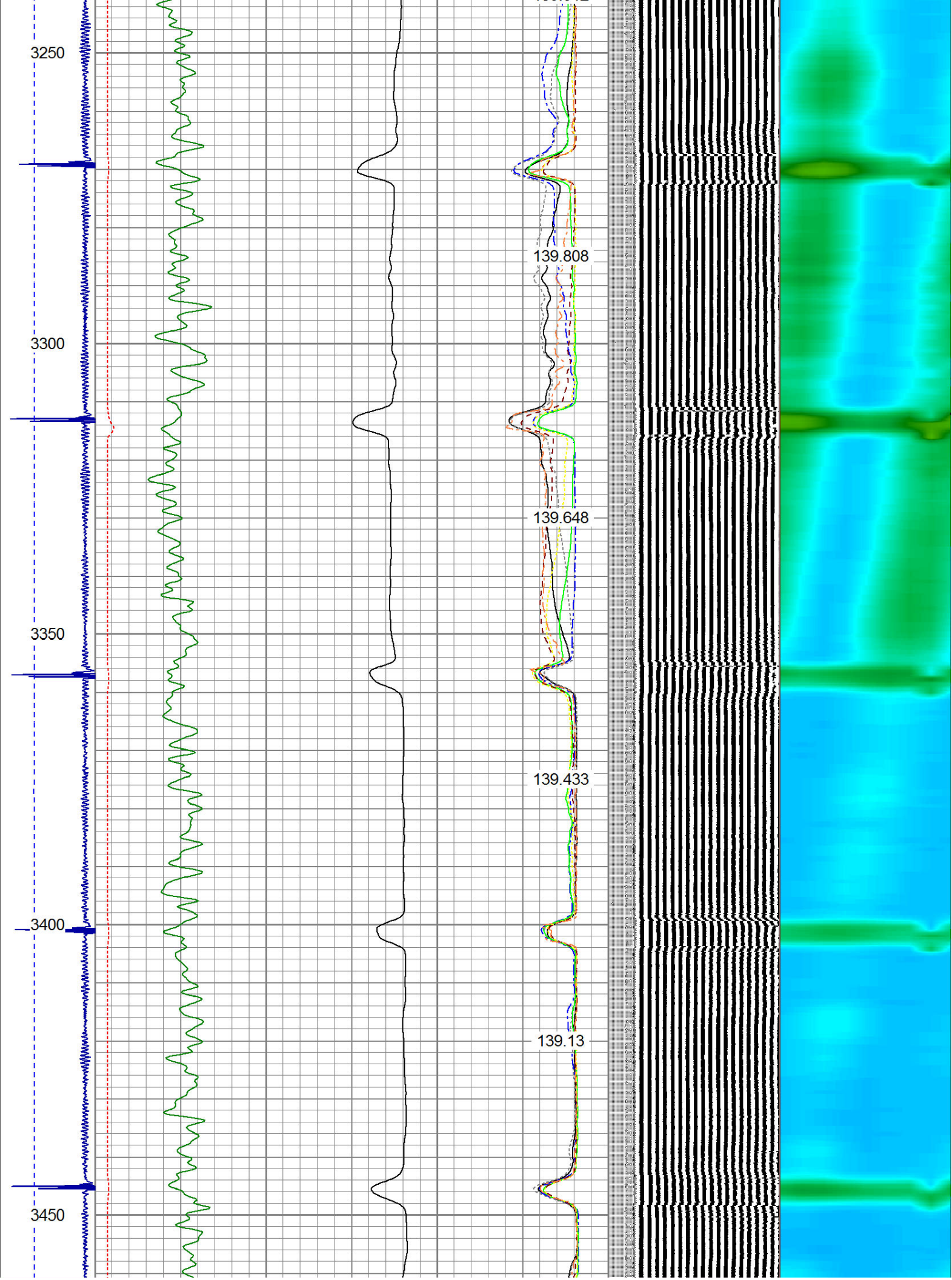


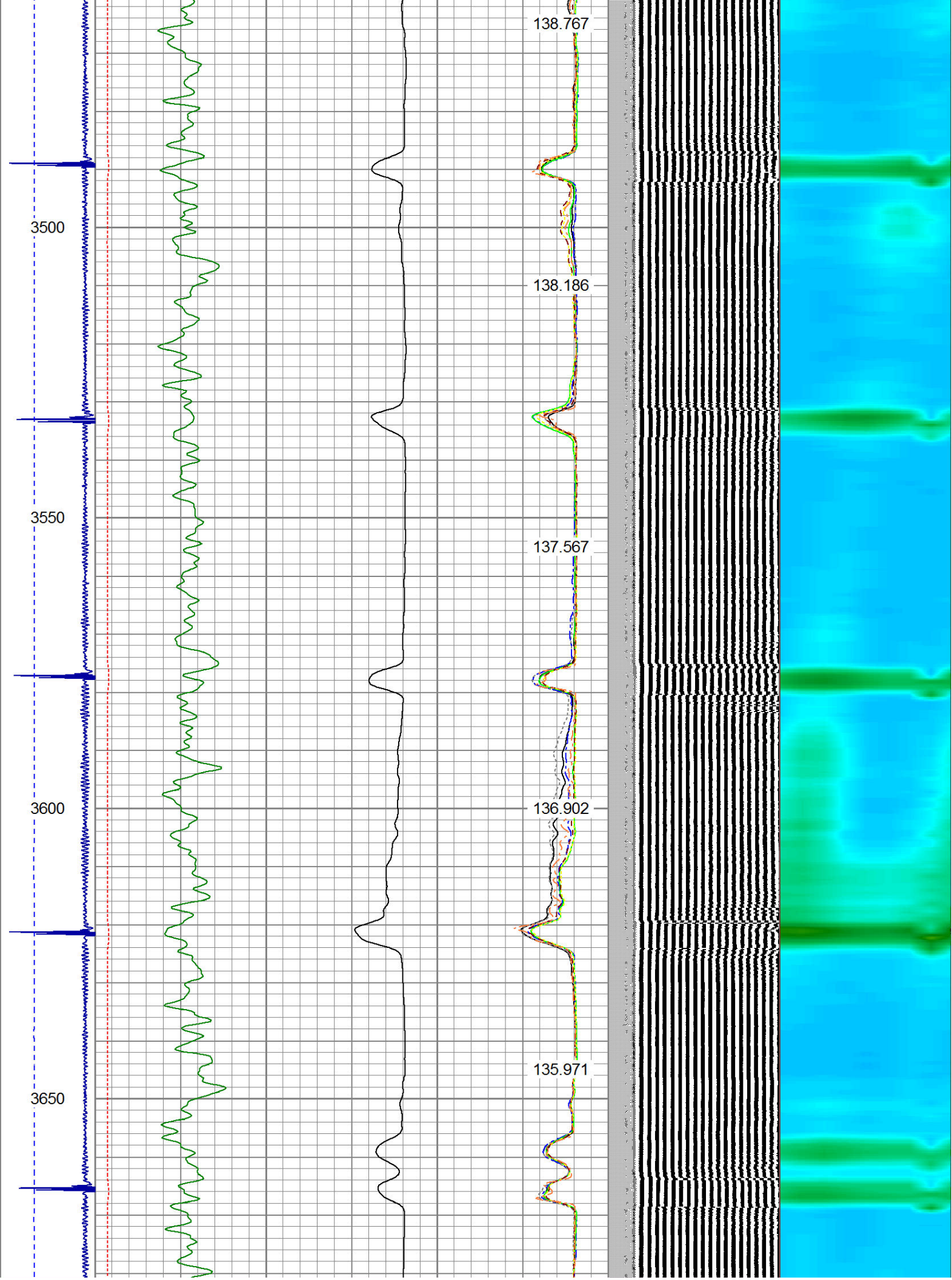












3500

3550

3600

3650

138.767

138.186

137.567

136.902

135.971

