

BILL BARRETT CORP

WELD COUNTY, COLORADO

Will 6-62-15 NENW

Will 6-62-15-0560CH2

Wellbore #1

Plan: Design #1

Standard Planning Report

12 March, 2015



Bill Barrett Corporation

COMPANY DETAILS: BILL BARRETT CORP

Calculation Method: Minimum Curvature
Error System: ISCWSA
Scan Method: Closest Approach 3D
Error Surface: Elliptical Conic
Warning Method: Error Ratio

REFERENCE INFORMATION

Co-ordinate (N/E) Reference: Well Will 6-62-15-0560CH2, True North
Vertical (TVD) Reference: WELL @ 4766.0ft (Original Well Elev)
Section (VS) Reference: Slot - (0.0N, 0.0E)
Measured Depth Reference: WELL @ 4766.0ft (Original Well Elev)
Calculation Method: Minimum Curvature

WELL DETAILS: Will 6-62-15-0560CH2

+N/-S	+E/-W	Northing	Easting	Latitude	Longitude
0.0	0.0	1424896.73	3331090.02	40° 29' 37.111 N	104° 18' 34.312 W

SECTION DETAILS

Sec	MD	Inc	Azi	TVD	+N/-S	+E/-W	DLeg	TFace	VSec	Target
1	0.0	0.00	0.00	0.0	0.0	0.0	0.00	0.00	0.0	
2	800.0	0.00	0.00	800.0	0.0	0.0	0.00	0.00	0.0	
3	1418.4	12.37	73.20	1413.6	19.2	63.7	2.00	73.20	-13.4	
4	5305.9	12.37	73.20	5210.9	259.9	860.8	0.00	0.00	-180.6	
5	5924.3	0.00	180.23	5824.5	279.1	924.4	2.00	180.00	-194.0	
6	6174.3	0.00	180.23	6074.5	279.1	924.4	0.00	180.23	-194.0	
7	6926.4	90.24	180.23	6552.0	-200.3	922.6	12.00	180.23	283.3	Will 6-62-15-0560CH2_LP
8	16426.8	90.24	180.23	6512.0	-9700.7	885.1	0.00	0.00	9741.0	Will 6-62-15-0560CH2_PBHL

PROJECT DETAILS: WELD COUNTY, COLORADO

Geodetic System: US State Plane 1983
Datum: North American Datum 1983
Ellipsoid: GRS 1980
Zone: Colorado Northern Zone

FORMATION TOP DETAILS

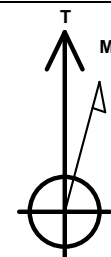
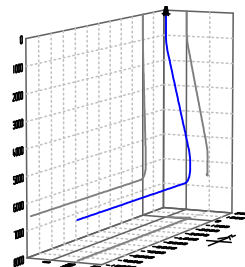
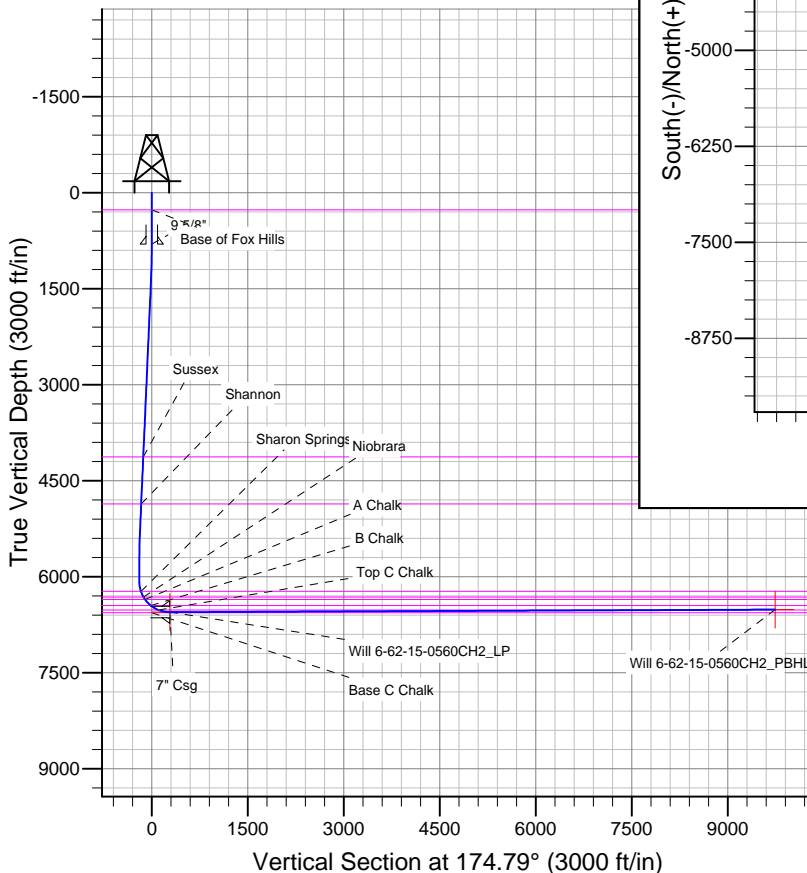
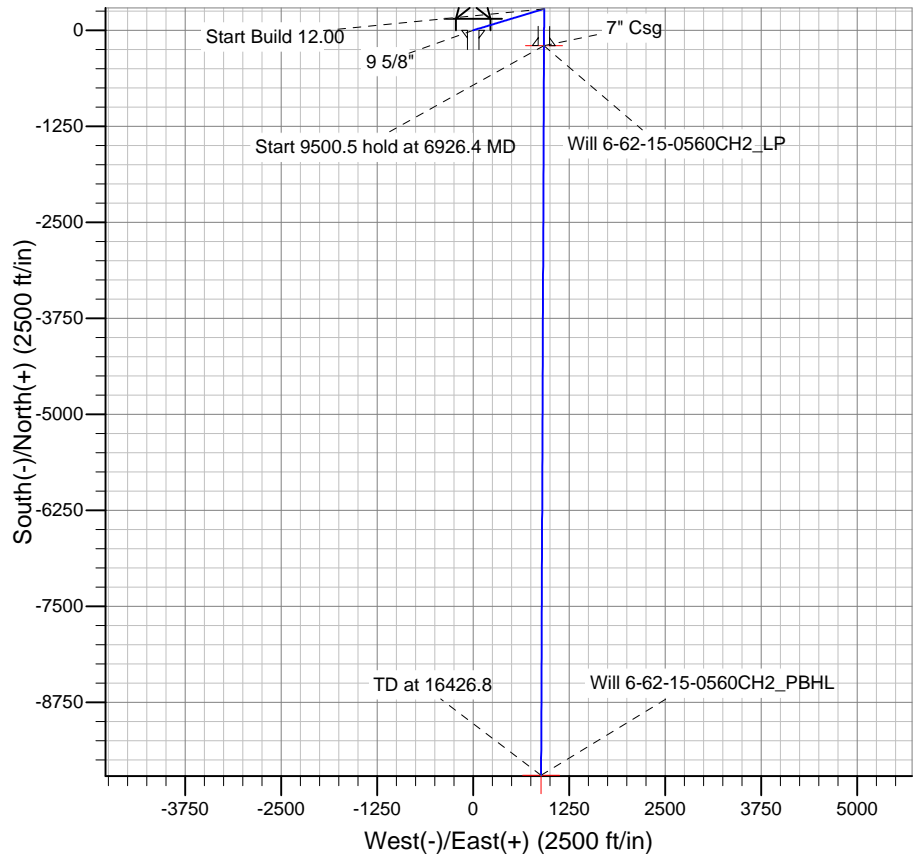
TVDPath	MDPath	Formation
266.0	266.0	Base C Chalk
4127.0	4196.3	Base of Fox Hills
4863.0	4949.8	Sussex
6228.0	6330.6	Shannon
6316.0	6427.5	Sharon Springs
6354.0	6472.9	Niobrara
6449.0	6604.8	A Chalk
6518.0	6743.1	B Chalk
		Top C Chalk

WELLBORE TARGET DETAILS

Name	TVD	+N/-S	+E/-W	Shape
Will 6-62-15-0560CH2_PBHL	6512.0	-9700.7	885.1	Point
Will 6-62-15-0560CH2_LP	6552.0	-200.3	922.6	Point

CASING DETAILS

TVD	MD	Name	Size
800.0	800.0	9 5/8"	9-5/8
6552.0	6926.0	7" Csg	7



Azimuths to True North
Magnetic North: 8.15°

Magnetic Field
Strength: 52853.8snT
Dip Angle: 67.07°
Date: 12/31/2014
Model: IGRF2010

Bill Barrett Corp
Planning Report

Database:	Compass	Local Co-ordinate Reference:	Well Will 6-62-15-0560CH2
Company:	BILL BARRETT CORP	TVD Reference:	WELL @ 4766.0ft (Original Well Elev)
Project:	WELD COUNTY, COLORADO	MD Reference:	WELL @ 4766.0ft (Original Well Elev)
Site:	Will 6-62-15 NENW	North Reference:	True
Well:	Will 6-62-15-0560CH2	Survey Calculation Method:	Minimum Curvature
Wellbore:	Wellbore #1		
Design:	Design #1		

Project	WELD COUNTY, COLORADO		
Map System:	US State Plane 1983	System Datum:	Mean Sea Level
Geo Datum:	North American Datum 1983		
Map Zone:	Colorado Northern Zone		

Site		Will 6-62-15 NENW				
Site Position:		Northing:	1,424,895.52 ft	Latitude:	40° 29' 37.111 N	
From:	Lat/Long	Easting:	3,330,999.60 ft	Longitude:	104° 18' 35.482 W	
Position Uncertainty:		0.0 ft	Slot Radius:	"	Grid Convergence:	0.77 °

Well	Will 6-62-15-0560CH2					
Well Position	+N-S	0.0 ft	Northing:	1,424,896.73 ft	Latitude:	40° 29' 37.111 N
	+E-W	90.4 ft	Easting:	3,331,090.02 ft	Longitude:	104° 18' 34.312 W
Position Uncertainty		0.0 ft	Wellhead Elevation:	ft	Ground Level:	4,750.0ft

Wellbore	Wellbore #1				
-----------------	-------------	--	--	--	--

Magnetics	Model Name	Sample Date	Declination (°)	Dip Angle (°)	Field Strength (nT)
	IGRF2010	12/31/2014	8.15	67.07	52,854

Design	Design #1				
---------------	-----------	--	--	--	--

Audit Notes:					
Version:		Phase:	PLAN	Tie On Depth:	0.0
Vertical Section:	Depth From (TVD)	+N/-S	+E/-W	Direction	
	(ft)	(ft)	(ft)	(°)	
	0.0	0.0	0.0	174.79	

Plan Sections										
Measured Depth (ft)	Inclination (°)	Azimuth (°)	Vertical Depth (ft)	+N/-S (ft)	+E/-W (ft)	Dogleg Rate (°/100ft)	Build Rate (°/100ft)	Turn Rate (°/100ft)	TFO (°)	Target
0.0	0.00	0.00	0.0	0.0	0.0	0.00	0.00	0.00	0.00	
800.0	0.00	0.00	800.0	0.0	0.0	0.00	0.00	0.00	0.00	
1,418.4	12.37	73.20	1,413.6	19.2	63.7	2.00	2.00	0.00	73.20	
5,305.9	12.37	73.20	5,210.9	259.9	860.8	0.00	0.00	0.00	0.00	
5,924.3	0.00	180.23	5,824.5	279.1	924.4	2.00	-2.00	0.00	180.00	
6,174.3	0.00	180.23	6,074.5	279.1	924.4	0.00	0.00	0.00	180.23	
6,926.4	90.24	180.23	6,552.0	-200.3	922.6	12.00	12.00	0.00	180.23	Will 6-62-15-0560C
16,426.8	90.24	180.23	6,512.0	-9,700.7	885.1	0.00	0.00	0.00	0.00	Will 6-62-15-0560C

Bill Barrett Corp
Planning Report

Database:	Compass	Local Co-ordinate Reference:	Well Will 6-62-15-0560CH2
Company:	BILL BARRETT CORP	TVD Reference:	WELL @ 4766.0ft (Original Well Elev)
Project:	WELD COUNTY, COLORADO	MD Reference:	WELL @ 4766.0ft (Original Well Elev)
Site:	Will 6-62-15 NENW	North Reference:	True
Well:	Will 6-62-15-0560CH2	Survey Calculation Method:	Minimum Curvature
Wellbore:	Wellbore #1		
Design:	Design #1		

Planned Survey

Measured Depth (ft)	Inclination (°)	Azimuth (°)	Vertical Depth (ft)	+N/-S (ft)	+E/-W (ft)	Vertical Section (ft)	Dogleg Rate (°/100ft)	Build Rate (°/100ft)	Turn Rate (°/100ft)
0.0	0.00	0.00	0.0	0.0	0.0	0.0	0.00	0.00	0.00
100.0	0.00	0.00	100.0	0.0	0.0	0.0	0.00	0.00	0.00
200.0	0.00	0.00	200.0	0.0	0.0	0.0	0.00	0.00	0.00
266.0	0.00	0.00	266.0	0.0	0.0	0.0	0.00	0.00	0.00
Base of Fox Hills									
300.0	0.00	0.00	300.0	0.0	0.0	0.0	0.00	0.00	0.00
400.0	0.00	0.00	400.0	0.0	0.0	0.0	0.00	0.00	0.00
500.0	0.00	0.00	500.0	0.0	0.0	0.0	0.00	0.00	0.00
600.0	0.00	0.00	600.0	0.0	0.0	0.0	0.00	0.00	0.00
700.0	0.00	0.00	700.0	0.0	0.0	0.0	0.00	0.00	0.00
800.0	0.00	0.00	800.0	0.0	0.0	0.0	0.00	0.00	0.00
9 5/8"									
900.0	2.00	73.20	900.0	0.5	1.7	-0.4	2.00	2.00	0.00
1,000.0	4.00	73.20	999.8	2.0	6.7	-1.4	2.00	2.00	0.00
1,100.0	6.00	73.20	1,099.5	4.5	15.0	-3.2	2.00	2.00	0.00
1,200.0	8.00	73.20	1,198.7	8.1	26.7	-5.6	2.00	2.00	0.00
1,300.0	10.00	73.20	1,297.5	12.6	41.7	-8.7	2.00	2.00	0.00
1,400.0	12.00	73.20	1,395.6	18.1	59.9	-12.6	2.00	2.00	0.00
1,418.4	12.37	73.20	1,413.6	19.2	63.7	-13.4	2.00	2.00	0.00
1,500.0	12.37	73.20	1,493.3	24.3	80.4	-16.9	0.00	0.00	0.00
1,600.0	12.37	73.20	1,591.0	30.5	100.9	-21.2	0.00	0.00	0.00
1,700.0	12.37	73.20	1,688.7	36.7	121.4	-25.5	0.00	0.00	0.00
1,800.0	12.37	73.20	1,786.4	42.8	141.9	-29.8	0.00	0.00	0.00
1,900.0	12.37	73.20	1,884.0	49.0	162.4	-34.1	0.00	0.00	0.00
2,000.0	12.37	73.20	1,981.7	55.2	182.9	-38.4	0.00	0.00	0.00
2,100.0	12.37	73.20	2,079.4	61.4	203.4	-42.7	0.00	0.00	0.00
2,200.0	12.37	73.20	2,177.1	67.6	223.9	-47.0	0.00	0.00	0.00
2,300.0	12.37	73.20	2,274.7	73.8	244.4	-51.3	0.00	0.00	0.00
2,400.0	12.37	73.20	2,372.4	80.0	264.9	-55.6	0.00	0.00	0.00
2,500.0	12.37	73.20	2,470.1	86.2	285.4	-59.9	0.00	0.00	0.00
2,600.0	12.37	73.20	2,567.8	92.4	305.9	-64.2	0.00	0.00	0.00
2,700.0	12.37	73.20	2,665.5	98.6	326.4	-68.5	0.00	0.00	0.00
2,800.0	12.37	73.20	2,763.1	104.8	346.9	-72.8	0.00	0.00	0.00
2,900.0	12.37	73.20	2,860.8	110.9	367.5	-77.1	0.00	0.00	0.00
3,000.0	12.37	73.20	2,958.5	117.1	388.0	-81.4	0.00	0.00	0.00
3,100.0	12.37	73.20	3,056.2	123.3	408.5	-85.7	0.00	0.00	0.00
3,200.0	12.37	73.20	3,153.9	129.5	429.0	-90.0	0.00	0.00	0.00
3,300.0	12.37	73.20	3,251.5	135.7	449.5	-94.3	0.00	0.00	0.00
3,400.0	12.37	73.20	3,349.2	141.9	470.0	-98.6	0.00	0.00	0.00
3,500.0	12.37	73.20	3,446.9	148.1	490.5	-102.9	0.00	0.00	0.00
3,600.0	12.37	73.20	3,544.6	154.3	511.0	-107.2	0.00	0.00	0.00
3,700.0	12.37	73.20	3,642.3	160.5	531.5	-111.5	0.00	0.00	0.00
3,800.0	12.37	73.20	3,739.9	166.7	552.0	-115.8	0.00	0.00	0.00
3,900.0	12.37	73.20	3,837.6	172.9	572.5	-120.1	0.00	0.00	0.00
4,000.0	12.37	73.20	3,935.3	179.1	593.0	-124.4	0.00	0.00	0.00
4,100.0	12.37	73.20	4,033.0	185.2	613.5	-128.7	0.00	0.00	0.00
4,196.3	12.37	73.20	4,127.0	191.2	633.3	-132.9	0.00	0.00	0.00
Sussex									
4,200.0	12.37	73.20	4,130.7	191.4	634.0	-133.0	0.00	0.00	0.00
4,300.0	12.37	73.20	4,228.3	197.6	654.5	-137.3	0.00	0.00	0.00
4,400.0	12.37	73.20	4,326.0	203.8	675.0	-141.6	0.00	0.00	0.00
4,500.0	12.37	73.20	4,423.7	210.0	695.5	-145.9	0.00	0.00	0.00
4,600.0	12.37	73.20	4,521.4	216.2	716.0	-150.2	0.00	0.00	0.00

Bill Barrett Corp
Planning Report

Database:	Compass	Local Co-ordinate Reference:	Well Will 6-62-15-0560CH2
Company:	BILL BARRETT CORP	TVD Reference:	WELL @ 4766.0ft (Original Well Elev)
Project:	WELD COUNTY, COLORADO	MD Reference:	WELL @ 4766.0ft (Original Well Elev)
Site:	Will 6-62-15 NENW	North Reference:	True
Well:	Will 6-62-15-0560CH2	Survey Calculation Method:	Minimum Curvature
Wellbore:	Wellbore #1		
Design:	Design #1		

Planned Survey									
Measured Depth (ft)	Inclination (°)	Azimuth (°)	Vertical Depth (ft)	+N/-S (ft)	+E/-W (ft)	Vertical Section (ft)	Dogleg Rate (°/100ft)	Build Rate (°/100ft)	Turn Rate (°/100ft)
4,700.0	12.37	73.20	4,619.0	222.4	736.5	-154.6	0.00	0.00	0.00
4,800.0	12.37	73.20	4,716.7	228.6	757.1	-158.9	0.00	0.00	0.00
4,900.0	12.37	73.20	4,814.4	234.8	777.6	-163.2	0.00	0.00	0.00
4,949.8	12.37	73.20	4,863.0	237.9	787.8	-165.3	0.00	0.00	0.00
Shannon									
5,000.0	12.37	73.20	4,912.1	241.0	798.1	-167.5	0.00	0.00	0.00
5,100.0	12.37	73.20	5,009.8	247.2	818.6	-171.8	0.00	0.00	0.00
5,200.0	12.37	73.20	5,107.4	253.4	839.1	-176.1	0.00	0.00	0.00
5,300.0	12.37	73.20	5,205.1	259.5	859.6	-180.4	0.00	0.00	0.00
5,305.9	12.37	73.20	5,210.9	259.9	860.8	-180.6	0.00	0.00	0.00
5,400.0	10.49	73.20	5,303.1	265.3	878.6	-184.4	2.00	-2.00	0.00
5,500.0	8.49	73.20	5,401.7	270.1	894.4	-187.7	2.00	-2.00	0.00
5,600.0	6.49	73.20	5,500.9	273.8	906.9	-190.3	2.00	-2.00	0.00
5,700.0	4.49	73.20	5,600.4	276.6	916.0	-192.2	2.00	-2.00	0.00
5,800.0	2.49	73.20	5,700.2	278.3	921.9	-193.4	2.00	-2.00	0.00
5,900.0	0.49	73.20	5,800.2	279.1	924.3	-194.0	2.00	-2.00	0.00
5,924.3	0.00	180.23	5,824.5	279.1	924.4	-194.0	2.00	-2.00	0.00
6,000.0	0.00	180.23	5,900.2	279.1	924.4	-194.0	0.00	0.00	0.00
6,100.0	0.00	180.23	6,000.2	279.1	924.4	-194.0	0.00	0.00	0.00
6,174.3	0.00	180.23	6,074.5	279.1	924.4	-194.0	0.00	0.00	0.00
6,200.0	3.08	180.23	6,100.2	278.4	924.4	-193.3	12.00	12.00	0.00
6,300.0	15.08	180.23	6,198.7	262.7	924.4	-177.6	12.00	12.00	0.00
6,330.6	18.75	180.23	6,228.0	253.8	924.3	-168.8	12.00	12.00	0.00
Sharon Springs									
6,400.0	27.08	180.23	6,291.9	226.8	924.2	-141.9	12.00	12.00	0.00
6,427.5	30.38	180.23	6,316.0	213.6	924.2	-128.7	12.00	12.00	0.00
Niobrara									
6,472.9	35.82	180.23	6,354.0	188.8	924.1	-104.1	12.00	12.00	0.00
A Chalk									
6,500.0	39.08	180.23	6,375.5	172.3	924.0	-87.6	12.00	12.00	0.00
6,600.0	51.08	180.23	6,446.0	101.6	923.7	-17.3	12.00	12.00	0.00
6,604.8	51.65	180.23	6,449.0	97.9	923.7	-13.6	12.00	12.00	0.00
B Chalk									
6,700.0	63.08	180.23	6,500.3	17.9	923.4	66.1	12.00	12.00	0.00
6,743.1	68.25	180.23	6,518.0	-21.4	923.3	105.2	12.00	12.00	0.00
Top C Chalk									
6,800.0	75.08	180.23	6,535.9	-75.4	923.0	158.9	12.00	12.00	0.00
6,900.0	87.08	180.23	6,551.4	-174.0	922.7	257.1	12.00	12.00	0.00
6,926.0	90.20	180.23	6,552.0	-200.0	922.6	283.0	12.00	12.00	0.00
7" Csg									
6,926.4	90.24	180.23	6,552.0	-200.3	922.6	283.3	12.00	12.00	0.00
7,000.0	90.24	180.23	6,551.7	-274.0	922.3	356.6	0.00	0.00	0.00
7,100.0	90.24	180.23	6,551.3	-374.0	921.9	456.2	0.00	0.00	0.00
7,200.0	90.24	180.23	6,550.8	-474.0	921.5	555.7	0.00	0.00	0.00
7,300.0	90.24	180.23	6,550.4	-574.0	921.1	655.3	0.00	0.00	0.00
7,400.0	90.24	180.23	6,550.0	-674.0	920.7	754.8	0.00	0.00	0.00
7,500.0	90.24	180.23	6,549.6	-774.0	920.3	854.4	0.00	0.00	0.00
7,600.0	90.24	180.23	6,549.2	-874.0	919.9	953.9	0.00	0.00	0.00
7,700.0	90.24	180.23	6,548.7	-974.0	919.5	1,053.5	0.00	0.00	0.00
7,800.0	90.24	180.23	6,548.3	-1,074.0	919.1	1,153.0	0.00	0.00	0.00
7,900.0	90.24	180.23	6,547.9	-1,174.0	918.7	1,252.6	0.00	0.00	0.00
8,000.0	90.24	180.23	6,547.5	-1,274.0	918.3	1,352.1	0.00	0.00	0.00
8,100.0	90.24	180.23	6,547.1	-1,374.0	917.9	1,451.7	0.00	0.00	0.00

Bill Barrett Corp
Planning Report

Database:	Compass	Local Co-ordinate Reference:	Well Will 6-62-15-0560CH2
Company:	BILL BARRETT CORP	TVD Reference:	WELL @ 4766.0ft (Original Well Elev)
Project:	WELD COUNTY, COLORADO	MD Reference:	WELL @ 4766.0ft (Original Well Elev)
Site:	Will 6-62-15 NENW	North Reference:	True
Well:	Will 6-62-15-0560CH2	Survey Calculation Method:	Minimum Curvature
Wellbore:	Wellbore #1		
Design:	Design #1		

Planned Survey									
Measured Depth (ft)	Inclination (°)	Azimuth (°)	Vertical Depth (ft)	+N/-S (ft)	+E/-W (ft)	Vertical Section (ft)	Dogleg Rate (°/100ft)	Build Rate (°/100ft)	Turn Rate (°/100ft)
8,200.0	90.24	180.23	6,546.6	-1,474.0	917.5	1,551.2	0.00	0.00	0.00
8,300.0	90.24	180.23	6,546.2	-1,574.0	917.1	1,650.8	0.00	0.00	0.00
8,400.0	90.24	180.23	6,545.8	-1,674.0	916.7	1,750.3	0.00	0.00	0.00
8,500.0	90.24	180.23	6,545.4	-1,774.0	916.3	1,849.9	0.00	0.00	0.00
8,600.0	90.24	180.23	6,545.0	-1,874.0	915.9	1,949.4	0.00	0.00	0.00
8,700.0	90.24	180.23	6,544.5	-1,974.0	915.6	2,049.0	0.00	0.00	0.00
8,800.0	90.24	180.23	6,544.1	-2,074.0	915.2	2,148.5	0.00	0.00	0.00
8,900.0	90.24	180.23	6,543.7	-2,174.0	914.8	2,248.1	0.00	0.00	0.00
9,000.0	90.24	180.23	6,543.3	-2,273.9	914.4	2,347.6	0.00	0.00	0.00
9,100.0	90.24	180.23	6,542.8	-2,373.9	914.0	2,447.2	0.00	0.00	0.00
9,200.0	90.24	180.23	6,542.4	-2,473.9	913.6	2,546.7	0.00	0.00	0.00
9,300.0	90.24	180.23	6,542.0	-2,573.9	913.2	2,646.3	0.00	0.00	0.00
9,400.0	90.24	180.23	6,541.6	-2,673.9	912.8	2,745.8	0.00	0.00	0.00
9,500.0	90.24	180.23	6,541.2	-2,773.9	912.4	2,845.4	0.00	0.00	0.00
9,600.0	90.24	180.23	6,540.7	-2,873.9	912.0	2,944.9	0.00	0.00	0.00
9,700.0	90.24	180.23	6,540.3	-2,973.9	911.6	3,044.5	0.00	0.00	0.00
9,800.0	90.24	180.23	6,539.9	-3,073.9	911.2	3,144.0	0.00	0.00	0.00
9,900.0	90.24	180.23	6,539.5	-3,173.9	910.8	3,243.6	0.00	0.00	0.00
10,000.0	90.24	180.23	6,539.1	-3,273.9	910.4	3,343.1	0.00	0.00	0.00
10,100.0	90.24	180.23	6,538.6	-3,373.9	910.0	3,442.7	0.00	0.00	0.00
10,200.0	90.24	180.23	6,538.2	-3,473.9	909.6	3,542.2	0.00	0.00	0.00
10,300.0	90.24	180.23	6,537.8	-3,573.9	909.2	3,641.8	0.00	0.00	0.00
10,400.0	90.24	180.23	6,537.4	-3,673.9	908.8	3,741.3	0.00	0.00	0.00
10,500.0	90.24	180.23	6,537.0	-3,773.9	908.5	3,840.9	0.00	0.00	0.00
10,600.0	90.24	180.23	6,536.5	-3,873.9	908.1	3,940.4	0.00	0.00	0.00
10,700.0	90.24	180.23	6,536.1	-3,973.9	907.7	4,040.0	0.00	0.00	0.00
10,800.0	90.24	180.23	6,535.7	-4,073.9	907.3	4,139.5	0.00	0.00	0.00
10,900.0	90.24	180.23	6,535.3	-4,173.9	906.9	4,239.1	0.00	0.00	0.00
11,000.0	90.24	180.23	6,534.8	-4,273.9	906.5	4,338.6	0.00	0.00	0.00
11,100.0	90.24	180.23	6,534.4	-4,373.9	906.1	4,438.1	0.00	0.00	0.00
11,200.0	90.24	180.23	6,534.0	-4,473.9	905.7	4,537.7	0.00	0.00	0.00
11,300.0	90.24	180.23	6,533.6	-4,573.9	905.3	4,637.2	0.00	0.00	0.00
11,400.0	90.24	180.23	6,533.2	-4,673.9	904.9	4,736.8	0.00	0.00	0.00
11,500.0	90.24	180.23	6,532.7	-4,773.9	904.5	4,836.3	0.00	0.00	0.00
11,600.0	90.24	180.23	6,532.3	-4,873.9	904.1	4,935.9	0.00	0.00	0.00
11,700.0	90.24	180.23	6,531.9	-4,973.9	903.7	5,035.4	0.00	0.00	0.00
11,800.0	90.24	180.23	6,531.5	-5,073.9	903.3	5,135.0	0.00	0.00	0.00
11,900.0	90.24	180.23	6,531.1	-5,173.9	902.9	5,234.5	0.00	0.00	0.00
12,000.0	90.24	180.23	6,530.6	-5,273.9	902.5	5,334.1	0.00	0.00	0.00
12,100.0	90.24	180.23	6,530.2	-5,373.9	902.1	5,433.6	0.00	0.00	0.00
12,200.0	90.24	180.23	6,529.8	-5,473.9	901.7	5,533.2	0.00	0.00	0.00
12,300.0	90.24	180.23	6,529.4	-5,573.9	901.4	5,632.7	0.00	0.00	0.00
12,400.0	90.24	180.23	6,529.0	-5,673.9	901.0	5,732.3	0.00	0.00	0.00
12,500.0	90.24	180.23	6,528.5	-5,773.9	900.6	5,831.8	0.00	0.00	0.00
12,600.0	90.24	180.23	6,528.1	-5,873.9	900.2	5,931.4	0.00	0.00	0.00
12,700.0	90.24	180.23	6,527.7	-5,973.9	899.8	6,030.9	0.00	0.00	0.00
12,800.0	90.24	180.23	6,527.3	-6,073.9	899.4	6,130.5	0.00	0.00	0.00
12,900.0	90.24	180.23	6,526.8	-6,173.9	899.0	6,230.0	0.00	0.00	0.00
13,000.0	90.24	180.23	6,526.4	-6,273.9	898.6	6,329.6	0.00	0.00	0.00
13,100.0	90.24	180.23	6,526.0	-6,373.9	898.2	6,429.1	0.00	0.00	0.00
13,200.0	90.24	180.23	6,525.6	-6,473.9	897.8	6,528.7	0.00	0.00	0.00
13,300.0	90.24	180.23	6,525.2	-6,573.9	897.4	6,628.2	0.00	0.00	0.00
13,400.0	90.24	180.23	6,524.7	-6,673.9	897.0	6,727.8	0.00	0.00	0.00
13,500.0	90.24	180.23	6,524.3	-6,773.9	896.6	6,827.3	0.00	0.00	0.00

Bill Barrett Corp
Planning Report

Database:	Compass	Local Co-ordinate Reference:	Well Will 6-62-15-0560CH2
Company:	BILL BARRETT CORP	TVD Reference:	WELL @ 4766.0ft (Original Well Elev)
Project:	WELD COUNTY, COLORADO	MD Reference:	WELL @ 4766.0ft (Original Well Elev)
Site:	Will 6-62-15 NENW	North Reference:	True
Well:	Will 6-62-15-0560CH2	Survey Calculation Method:	Minimum Curvature
Wellbore:	Wellbore #1		
Design:	Design #1		

Planned Survey

Measured Depth (ft)	Inclination (°)	Azimuth (°)	Vertical Depth (ft)	+N/-S (ft)	+E/-W (ft)	Vertical Section (ft)	Dogleg Rate (°/100ft)	Build Rate (°/100ft)	Turn Rate (°/100ft)
13,600.0	90.24	180.23	6,523.9	-6,873.9	896.2	6,926.9	0.00	0.00	0.00
13,700.0	90.24	180.23	6,523.5	-6,973.9	895.8	7,026.4	0.00	0.00	0.00
13,800.0	90.24	180.23	6,523.1	-7,073.9	895.4	7,126.0	0.00	0.00	0.00
13,900.0	90.24	180.23	6,522.6	-7,173.9	895.0	7,225.5	0.00	0.00	0.00
14,000.0	90.24	180.23	6,522.2	-7,273.9	894.6	7,325.1	0.00	0.00	0.00
14,100.0	90.24	180.23	6,521.8	-7,373.9	894.2	7,424.6	0.00	0.00	0.00
14,200.0	90.24	180.23	6,521.4	-7,473.9	893.9	7,524.2	0.00	0.00	0.00
14,300.0	90.24	180.23	6,521.0	-7,573.9	893.5	7,623.7	0.00	0.00	0.00
14,400.0	90.24	180.23	6,520.5	-7,673.9	893.1	7,723.3	0.00	0.00	0.00
14,500.0	90.24	180.23	6,520.1	-7,773.9	892.7	7,822.8	0.00	0.00	0.00
14,600.0	90.24	180.23	6,519.7	-7,873.9	892.3	7,922.4	0.00	0.00	0.00
14,700.0	90.24	180.23	6,519.3	-7,973.9	891.9	8,021.9	0.00	0.00	0.00
14,800.0	90.24	180.23	6,518.8	-8,073.9	891.5	8,121.5	0.00	0.00	0.00
14,900.0	90.24	180.23	6,518.4	-8,173.9	891.1	8,221.0	0.00	0.00	0.00
15,000.0	90.24	180.23	6,518.0	-8,273.8	890.7	8,320.6	0.00	0.00	0.00
15,100.0	90.24	180.23	6,517.6	-8,373.8	890.3	8,420.1	0.00	0.00	0.00
15,200.0	90.24	180.23	6,517.2	-8,473.8	889.9	8,519.7	0.00	0.00	0.00
15,300.0	90.24	180.23	6,516.7	-8,573.8	889.5	8,619.2	0.00	0.00	0.00
15,400.0	90.24	180.23	6,516.3	-8,673.8	889.1	8,718.7	0.00	0.00	0.00
15,500.0	90.24	180.23	6,515.9	-8,773.8	888.7	8,818.3	0.00	0.00	0.00
15,600.0	90.24	180.23	6,515.5	-8,873.8	888.3	8,917.8	0.00	0.00	0.00
15,700.0	90.24	180.23	6,515.1	-8,973.8	887.9	9,017.4	0.00	0.00	0.00
15,800.0	90.24	180.23	6,514.6	-9,073.8	887.5	9,116.9	0.00	0.00	0.00
15,900.0	90.24	180.23	6,514.2	-9,173.8	887.1	9,216.5	0.00	0.00	0.00
16,000.0	90.24	180.23	6,513.8	-9,273.8	886.8	9,316.0	0.00	0.00	0.00
16,100.0	90.24	180.23	6,513.4	-9,373.8	886.4	9,415.6	0.00	0.00	0.00
16,200.0	90.24	180.23	6,513.0	-9,473.8	886.0	9,515.1	0.00	0.00	0.00
16,300.0	90.24	180.23	6,512.5	-9,573.8	885.6	9,614.7	0.00	0.00	0.00
16,400.0	90.24	180.23	6,512.1	-9,673.8	885.2	9,714.2	0.00	0.00	0.00
16,426.8	90.24	180.23	6,512.0	-9,700.7	885.1	9,741.0	0.00	0.00	0.00

Casing Points

Measured Depth (ft)	Vertical Depth (ft)	Name	Casing Diameter (")	Hole Diameter (")
800.0	800.0	9 5/8"	9-5/8	13-1/2
6,926.0	6,552.0	7" Csg	7	8-3/4

Bill Barrett Corp

Planning Report

Database:	Compass	Local Co-ordinate Reference:	Well Will 6-62-15-0560CH2
Company:	BILL BARRETT CORP	TVD Reference:	WELL @ 4766.0ft (Original Well Elev)
Project:	WELD COUNTY, COLORADO	MD Reference:	WELL @ 4766.0ft (Original Well Elev)
Site:	Will 6-62-15 NENW	North Reference:	True
Well:	Will 6-62-15-0560CH2	Survey Calculation Method:	Minimum Curvature
Wellbore:	Wellbore #1		
Design:	Design #1		

Formations						
Measured Depth (ft)	Vertical Depth (ft)	Name	Lithology	Dip (°)	Dip Direction (°)	
266.0	266.0	Base of Fox Hills		0.00		
4,196.3	4,127.0	Sussex		0.00		
4,949.8	4,863.0	Shannon		0.00		
6,330.6	6,228.0	Sharon Springs		0.00		
6,427.5	6,316.0	Niobrara		0.00		
6,472.9	6,354.0	A Chalk		0.00		
6,604.8	6,449.0	B Chalk		0.00		
6,743.1	6,518.0	Top C Chalk		0.00		
	6,559.0	Base C Chalk		0.00		