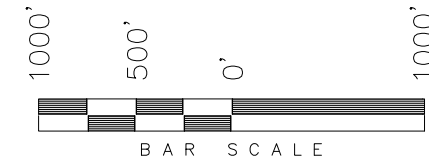


T3N, R97W, 6th P.M.

ENDEAVOUR OPERATING CORPORATION

WELL LOCATION, WILEY UNIT 23-3-97 0-2H,
LOCATED AS SHOWN IN THE SW 1/4 SE 1/4
OF SECTION 23, T3N, R97W, 6TH P.M. RIO
BLANCO COUNTY, COLORADO.



NOTES:

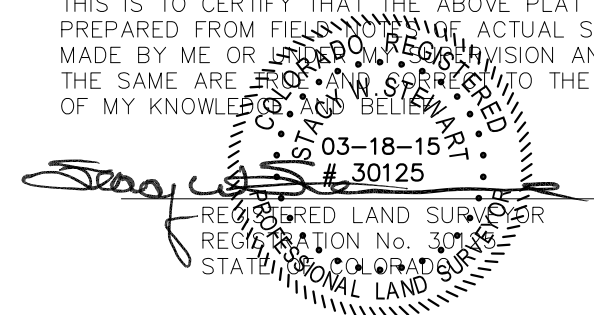
1. Well footages are measured at right angles to the Section Lines.
2. Bearings are based on Global Positioning Satellite observations.
3. G.P.S. Operator: K. Stewart, (PDOP) = 1.4

WELL LOCATION: WILEY UNIT 23-3-97 0-2H

ELEV. GRADED GROUND = 6022.7'

◆ = SECTION CORNERS LOCATED

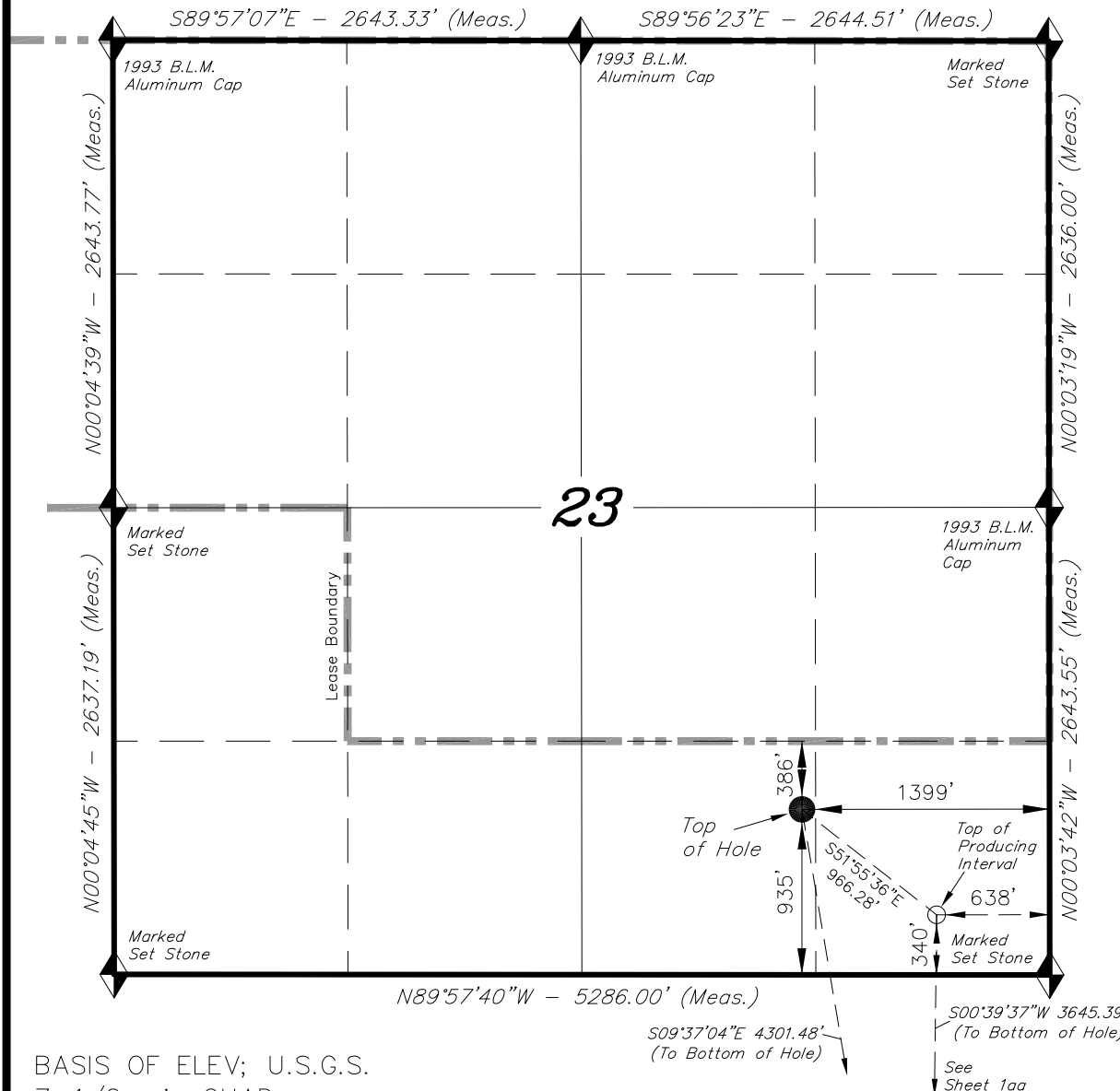
THIS IS TO CERTIFY THAT THE ABOVE PLAT WAS
PREPARED FROM FIELD NOTES OF ACTUAL SURVEYS
MADE BY ME OR UNDER MY SUPERVISION AND THAT
THE SAME ARE TRUE AND CORRECT TO THE BEST
OF MY KNOWLEDGE AND BELIEF.



TRI STATE LAND SURVEYING & CONSULTING

180 NORTH VERNAL AVE. - VERNAL, UTAH 84078
(435) 781-2501

DATE SURVEYED: 10-30-14	SURVEYED BY: K.G.S.	SHEET 1a
DATE DRAWN: 11-19-14	DRAWN BY: M.W.	
REVISED: 03-18-15 R.V.C.	SCALE: 1" = 1000'	



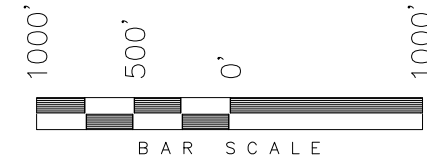
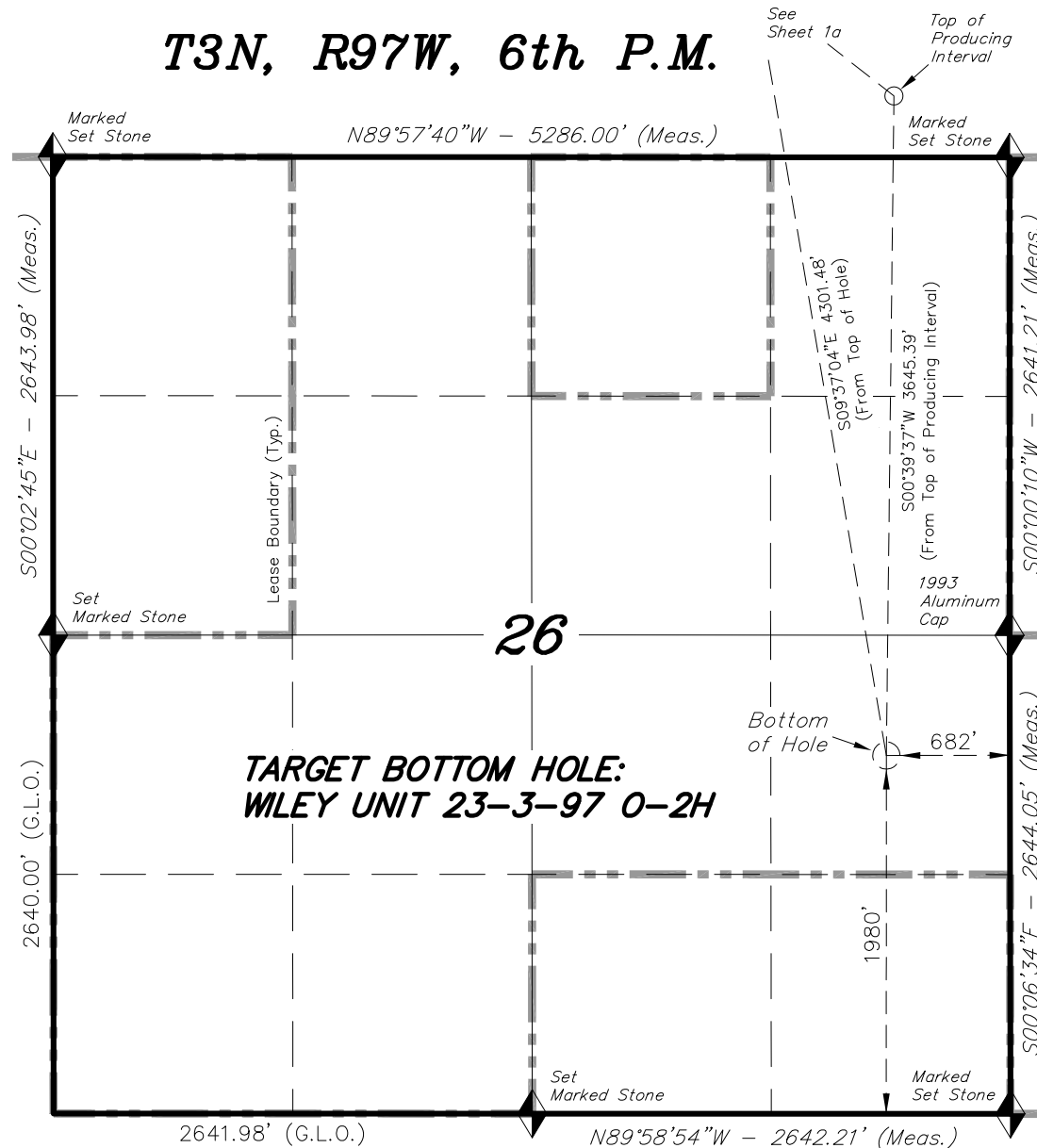
BASIS OF ELEV; U.S.G.S.
7-1/2 min QUAD
(Indian Valley)

NAD 83 (TOP OF PROD. INTERVAL)	NAD 83 (SURFACE LOCATION)
LATITUDE = 40°12'29.20" (40.208110°)	LATITUDE = 40°12'35.09" (40.209747°)
LONGITUDE = 108°14'18.05" (108.238347°)	LONGITUDE = 108°14'27.84" (108.241068°)
NAD 27 (TOP OF PROD. INTERVAL)	NAD 27 (SURFACE LOCATION)
LATITUDE = 40°12'29.30" (40.208140°)	LATITUDE = 40°12'35.20" (40.209777°)
LONGITUDE = 108°14'15.73" (108.237704°)	LONGITUDE = 108°14'25.53" (108.240425°)

T3N, R97W, 6th P.M.

ENDEAVOUR OPERATING CORPORATION

TARGET BOTTOM HOLE, WILEY UNIT 23-3-97
O-2H, LOCATED AS SHOWN IN THE NE 1/4
SE 1/4 OF SECTION 26, T3N, R97W, 6TH P.M.
RIO BLANCO COUNTY, COLORADO.



NOTES:

1. Well footages are measured at right angles to the Section Lines.
2. Bearings are based on Global Positioning Satellite observations.

THIS IS TO CERTIFY THAT THE ABOVE PLAT WAS
PREPARED FROM FIELD NOTES OF ACTUAL SURVEYS
MADE BY ME OR UNDER MY SUPERVISION AND THAT
THE SAME ARE TRUE AND CORRECT TO THE BEST
OF MY KNOWLEDGE AND BELIEF.



◆ = SECTION CORNERS LOCATED

BASIS OF ELEV; U.S.G.S. 7-1/2 min QUAD
(Indian Valley)

NAD 83 (BOTTOM HOLE LOCATION)	
LATITUDE	= 40°11'53.19" (40.198107°)
LONGITUDE	= 108°14'18.63" (108.238508°)
NAD 27 (BOTTOM HOLE LOCATION)	
LATITUDE	= 40°11'53.29" (40.198137°)
LONGITUDE	= 108°14'16.31" (108.237865°)

TRI STATE LAND SURVEYING & CONSULTING

180 NORTH VERNAL AVE. - VERNAL, UTAH 84078
(435) 781-2501

DATE SURVEYED: 10-30-14	SURVEYED BY: K.G.S.	SHEET 1aa
DATE DRAWN: 11-19-14	DRAWN BY: M.W.	
REVISED: 03-18-15 R.V.C.	SCALE: 1" = 1000'	