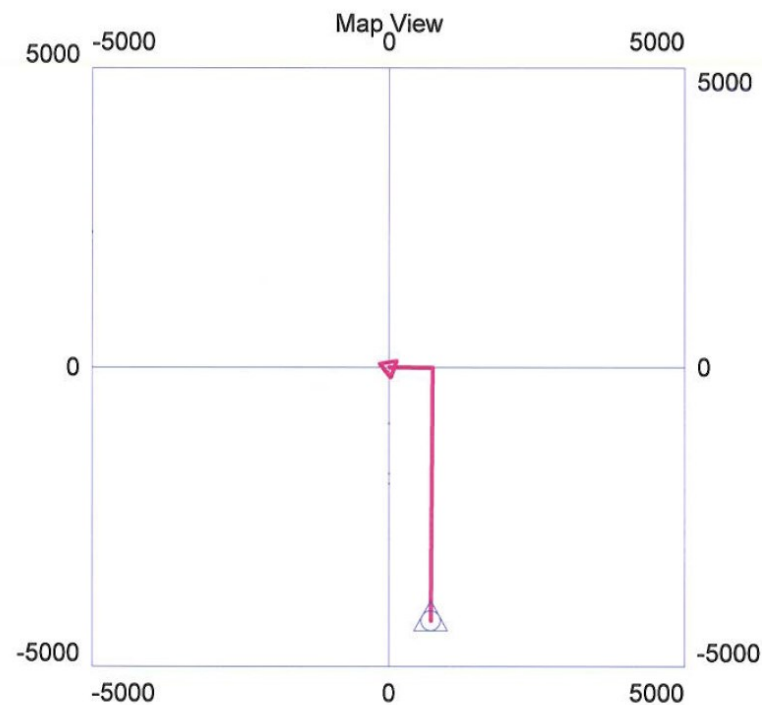
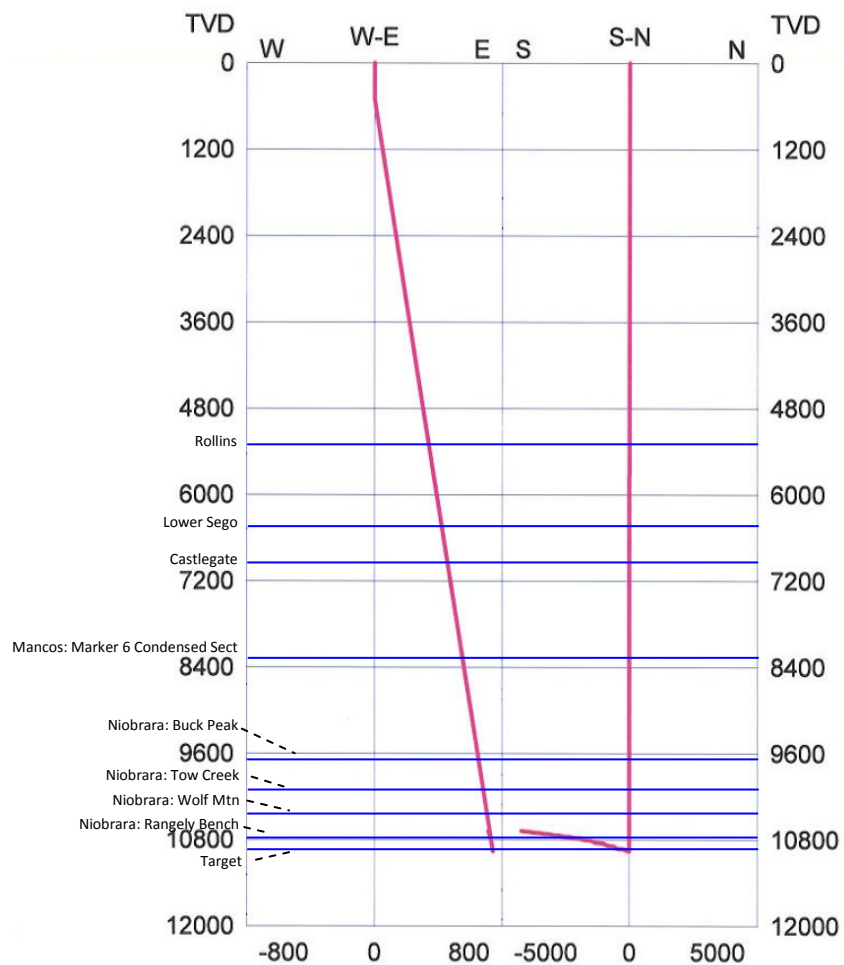




Wsn:104174 WELL: WU\_23-3-97\_O-2H (WU 23-3-97\_O-2H) [DEV]

### Directional Survey



WELL DETAILS: Wiley Unit 23-3-97 O-2H, G.L. = 6,022 Ft above S.L.

Geodetic Sys: US State Plane NAD27

Utah North 4301

XY in U.S. Feet

Surface Location:

+N/-S: 0.00

+E/-W: 0.00

Lat: 40.2097771° N

Long: 108.2404252° W

Bottom Hole Location:

+N/-S: -4241.31

+E/-W: 712.84

Lat: 40.198137° N

Long: 108.237865° W

Project: uinta basin  
Date: Wednesday, March 18, 2015 at 04:02 PM

Directional Survey Data - WU 23-3-97\_O-2H GEODETIC SYS: US STATE PLANE NAD27 UTAH NORTH 4301

Depth Units = US Feet  
X,Y Units = US Feet

MD	TVD	EW	NS	LAT	LONG
-----	-----	-----	-----	-----	-----
0.00	0.00	0.00	0.00	40.2097771 N	108.237865 W
500.00	500.00	0.00	0.00		
10986.51	10960.27	741.32	-8.93		
11036.65	10956.51	740.98	-58.93		
11087.20	10949.11	740.65	-108.93		
11137.97	10940.28	740.31	-158.93		
11188.49	10933.02	739.97	-208.93		
11238.65	10929.05	739.64	-258.93		
11288.66	10928.05	739.30	-308.93		
11338.66	10928.34	738.96	-358.93		
11388.67	10927.49	738.63	-408.92		
11438.87	10923.00	738.29	-458.92		
11489.65	10914.12	737.96	-508.92		
11540.87	10903.01	737.62	-558.92		
11591.79	10893.40	737.28	-608.92		
11642.12	10887.63	736.95	-658.92		
11692.16	10885.62	736.61	-708.92		
11742.16	10885.58	736.27	-758.92		
11792.16	10885.09	735.94	-808.92		
11842.32	10881.11	735.60	-858.91		
11893.01	10872.80	735.26	-908.91		
11944.17	10861.94	734.93	-958.91		
11995.13	10852.10	734.59	-1008.91		
12045.52	10845.82	734.25	-1058.91		
12095.54	10846.96	733.92	-1108.91		
12145.67	10843.31	733.58	-1158.91		
12195.67	10842.97	733.24	-1208.91		
12245.67	10842.94	732.91	-1258.91		
12295.70	10841.14	732.57	-1308.90		
12345.96	10836.11	732.23	-1358.90		
12396.64	10827.84	731.90	-1408.90		
12447.51	10818.47	731.56	-1458.90		
12498.04	10811.17	731.23	-1508.90		
12548.16	10807.61	730.89	-1558.90		
12598.17	10807.09	730.55	-1608.90		
12648.17	10807.36	730.22	-1658.90		
12698.17	10806.52	729.88	-1708.89		
12748.28	10803.23	729.54	-1758.89		
12798.63	10797.32	729.21	-1808.89		
12849.13	10790.26	728.87	-1858.89		
12899.46	10784.48	728.53	-1908.89		
12949.54	10781.65	728.20	-1958.89		
12999.55	10780.82	727.86	-2008.89		
13049.55	10781.07	727.52	-2058.89		
13099.55	10780.50	727.19	-2108.89		
13149.61	10777.97	726.85	-2158.88		
13199.84	10773.24	726.51	-2208.88		
13250.18	10767.38	726.18	-2258.88		
13300.43	10762.40	725.84	-2308.88		
13350.48	10759.97	725.50	-2358.88		
13400.50	10758.82	725.17	-2408.88		
13450.50	10759.05	724.83	-2458.88		
13500.50	10758.64	724.50	-2508.88		
13550.55	10756.51	724.16	-2558.88		
13600.72	10752.37	723.82	-2608.87		
13650.99	10747.10	723.49	-2658.87		
13701.21	10742.44	723.15	-2708.87		
13751.26	10740.17	722.81	-2758.87		
13801.28	10738.65	722.48	-2808.87		
13851.29	10738.84	722.14	-2858.87		
13901.29	10738.53	721.80	-2908.87		
13951.32	10736.70	721.47	-2958.87		
14001.45	10733.04	721.13	-3008.87		
14051.68	10728.23	720.79	-3058.86		
14101.88	10723.80	720.46	-3108.86		
14151.93	10721.67	720.12	-3158.86		
14201.96	10719.79	719.78	-3208.86		
14251.96	10719.93	719.45	-3258.86		
14301.96	10719.70	719.11	-3308.86		
14351.99	10718.16	718.77	-3358.86		
14402.09	10714.97	718.44	-3408.86		
14452.27	10710.66	718.10	-3458.86		
14502.43	10706.66	717.76	-3508.85		
14552.47	10704.61	717.43	-3558.85		
14602.48	10703.77	717.09	-3608.85		
14652.50	10702.41	716.76	-3658.85		
14702.50	10702.11	716.42	-3708.85		
14752.52	10700.62	716.08	-3758.85		
14802.62	10697.58	715.75	-3808.85		
14852.79	10693.43	715.41	-3858.85		
14902.92	10689.76	715.07	-3908.85		
14952.96	10687.76	714.74	-3958.84		
15002.97	10686.85	714.40	-4008.84		
15053.01	10684.98	714.06	-4058.84		
15103.01	10684.60	713.73	-4108.84		

15153.03	10682.98	713.39	-4158.84		
15203.14	10679.72	713.05	-4208.84		
15235.74	10676.87	712.84	-4241.31	40.198137 N	108.237865 W

FORMATION:	TVD (GL)	MD (GL)
Rollins	5,304	5,335
Lower Sego	6,584	6,615
Castlegate	7,005	7,040
Mancos - Marker 6	8,362	8,405
Niobrara - Buck Peak	9,691	9,735
Niobrara - Tow Creek	10,151	10,195
Niobrara - Wolf Mountain	10,528	10,608
Niobrara - Rangely Bench	10,861	11,051
Target	10,919	11,279

End of Report