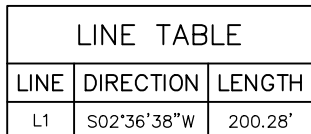


T6N, R62W, 6th P.M.

● = PROPOSED WELLHEAD.
 ◆ = LANDING POINT.
 ○ = TARGET BOTTOM HOLE.
 ▲ = SECTION CORNERS
 LOCATED.



A horizontal graphic scale bar with alternating black and white segments. Above the bar, the scale is marked with '1000'' at the left end, '500'' at the first segment boundary, '0'' at the center, '500'' at the second segment boundary, and '1000'' at the right end.

NAD 83 (TARGET BOTTOM HOLE)	NAD 83 (LANDING POINT)	NAD 83 (SURFACE LOCATION)
LATITUDE = 40°28'01.09" (40.466969)	LATITUDE = 40°29'35.13" (40.493092)	LATITUDE = 40°29'37.11" (40.493642)
LONGITUDE = 104°18'35.60" (104.309889)	LONGITUDE = 104°18'35.20" (104.309778)	LONGITUDE = 104°18'35.09" (104.309747)
NAD 27 (TARGET BOTTOM HOLE)	NAD 27 (LANDING POINT)	NAD 27 (SURFACE LOCATION)
LATITUDE = 40°28'01.15" (40.466986)	LATITUDE = 40°29'35.19" (40.493108)	LATITUDE = 40°29'37.17" (40.493658)
LONGITUDE = 104°18'33.77" (104.309381)	LONGITUDE = 104°18'33.38" (104.309272)	LONGITUDE = 104°18'33.26" (104.309239)
STATE PLANE NAD 83 (COLORADO NORTH)	STATE PLANE NAD 83 (COLORADO NORTH)	STATE PLANE NAD 83 (COLORADO NORTH)
N: 1415179.12 E: 3331121.24	N: 1424695.51 E: 3331023.82	N: 1424895.64 E: 3331030.15
STATE PLANE NAD 27 (COLORADO NORTH)	STATE PLANE NAD 27 (COLORADO NORTH)	STATE PLANE NAD 27 (COLORADO NORTH)
N: 415180.07 E: 2331270.94	N: 424696.22 E: 2331173.43	N: 424896.34 E: 2331179.75

THIS IS TO CERTIFY THAT THE ABOVE PLAT WAS PREPARED FROM FIELD
NOTES OF ACTUAL SURVEYS MADE BY ME OR UNDER MY SUPERVISION
AND THAT THE SAME ARE TRUE AND CORRECT TO THE BEST OF MY
KNOWLEDGE AND BELIEF.

STATE OF COLORADO 02-24-15

SPOT ELEVATION LOCATED AT THE NORTHEAST CORNER OF SECTION 24, T5N, R62W, 6th P.M. TAKEN FROM THE POINT OF ROCKS, QUADRANGLE, COLORADO, WELD COUNTY, 7.5 MINUTE QUAD (TOPOGRAPHIC MAP) PUBLISHED BY THE UNITED STATES DEPARTMENT OF THE INTERIOR, GEOLOGICAL SURVEY. SAID ELEVATION IS MARKED AS BEING 4530 FEET.



UELS, LLC
Corporate Office * 85 South 200 East
Vernal, UT 84078 * (435) 789-1017



**WILL 6-62-15_22 NENW PAD #6-62-15-0461BH2
NE 1/4 NW 1/4, SECTION 15, T6N, R62W, 6th P.M.
WELD COUNTY, COLORADO**

SURVEYED BY: GREG WEIMER, C.T.		DATE: 04-25-14
DRAWN BY: J.S.		DATE DRAWN: 05-05-14
SCALE: 1" = 1000'		REVISION: 02-19-15 T.C.

WELL LOCATION PLAT