

1801 Broadway
Suite 500
Denver, Colorado 80202



Callie Fiddes
Regulatory Compliance Specialist
Tel: 303.398.0550
E-mail: cfiddes@gwogco.com

March 9, 2015

Colorado Oil and Gas Conservation Commission
1120 Lincoln Street, Suite 801
Denver, Colorado 80203

RE: **Proposed Wellbore Spacing Unit**
Kodak FD 28-082HC

Codell New Drill
Township 6 North, Range 67 West, 6th P.M.
SE/W Section 26
Weld County, Colorado

Dear Director:

Great Western Operating Company, LLC is planning to drill the above captioned well in accordance with the provisions of COGCC Rule 318A.e.

Great Western proposed wellbore spacing unit consists of:

- **T6N-R67W- Section 26: NW/4; Section 27: N/2; Section 28: E/2NE/4**
- **560 Acres**

The 30 day notification time period has passed and we have not received any objections to such well locations or proposed spacing unit, therefore Great Western hereby requests the Director to approve the above mentioned well. Great Western Operating Company, LLC respectfully requests that the COGCC review the enclosed map illustrating the proposed wellbore spacing unit.

Respectfully,

Callie Fiddes

Callie Fiddes
Regulatory Compliance Specialist
Great Western Operating Company, LLC

T6N, R67W, 6th P.M.

BASIS OF BEARINGS

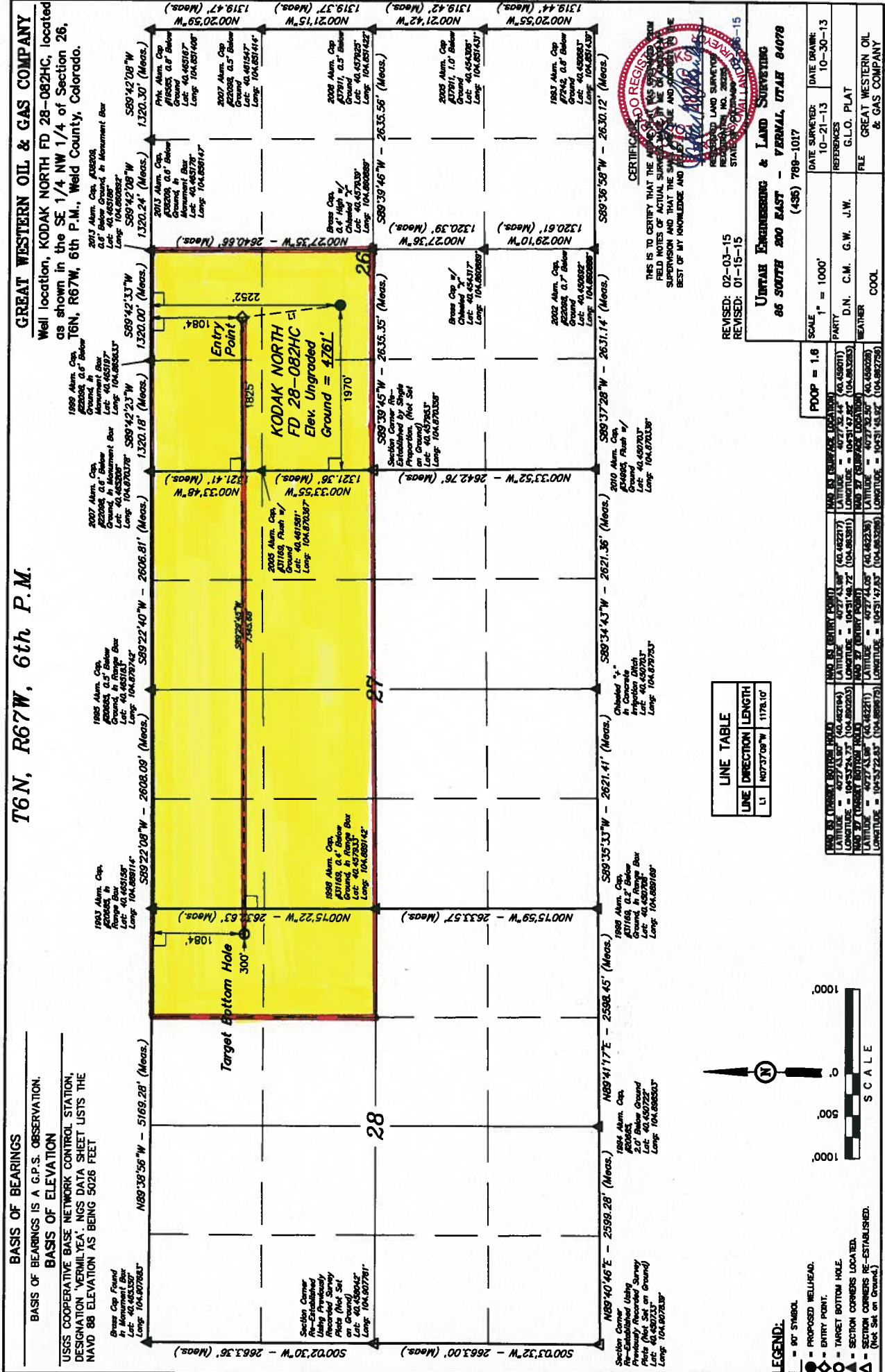
BASIS OF BEARINGS IS A G.P.S. OBSERVATION.

BASIS OF ELEVATION

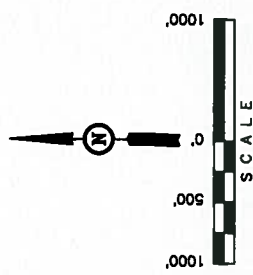
USGS COOPERATIVE BASE NETWORK CONTROL STATION, DESIGNATION "VERMILYEA". NGS DATA SHEET LISTS THE NAVD 88 ELEVATION AS BEING 5026 FEET

GREAT WESTERN OIL & GAS COMPANY

Well location, KODAK NORTH FD 28-082HC, located as shown in the SE 1/4 NW 1/4 of Section 26, T6N, R67W, 6th P.M., Weld County, Colorado.



LINE	DIRECTION	LENGTH
L1	N07°37'09"W	1178.10'



- LEGEND:**
- = PROPOSED WELLHEAD.
 - = ENTRY POINT.
 - = TARGET BOTTOM HOLE.
 - ▲ = SECTION CORNERS LOCATED.
 - △ = SECTION CORNERS RE-ESTABLISHED. (Not Shown on Ground)



CERTIFICATE OF REGISTRATION
 THIS IS TO CERTIFY THAT THE ABOVE IS A TRUE AND CORRECT COPY OF THE ORIGINAL RECORD AS FILED IN THE OFFICE OF THE COUNTY CLERK OF WELD COUNTY, COLORADO, AND THAT THE SURVEY WAS MADE UNDER THE SUPERVISION AND THAT THE SURVEYOR HAS TO THE BEST OF HIS KNOWLEDGE AND BELIEF COMPLIED WITH ALL THE REQUIREMENTS OF THE STATUTES OF THE STATE OF UTAH.
 REVISED: 02-03-15
 REVISED: 01-15-15

UTAH ENGINEERING & LAND SURVEYING
 86 SOUTH 200 EAST - VERNAL, UTAH 84078
 (435) 799-1017

SCALE: 1" = 1000'
 PARTY: D.N. C.M. G.W. J.W.
 WEATHER: COOL

LINE	DIRECTION	LENGTH	UTAH EAST (UTAH STATE)	UTAH NORTH (UTAH STATE)
L1	N07°37'09"W	1178.10'	4077.4388'	40.462217'
L2	N07°37'09"W	1178.10'	10451.4672'	104.863811'
L3	N07°37'09"W	1178.10'	4077.4388'	40.462217'
L4	N07°37'09"W	1178.10'	10451.4672'	104.863811'

REVISIONS:
 01-15-15: REVISED: 01-15-15
 02-03-15: REVISED: 02-03-15