

1801 Broadway
Suite 500
Denver, Colorado 80202



Callie Fiddes
Regulatory Compliance Specialist
Tel: 303.398.0550
E-mail: cfiddes@gwogco.com

March 9, 2015

Colorado Oil and Gas Conservation Commission
1120 Lincoln Street, Suite 801
Denver, Colorado 80203

RE: **Proposed Wellbore Spacing Unit**
Kodak FD 28-119HN

Niobrara New Drill
Township 6 North, Range 67 West, 6th P.M.
SENE Section 26
Weld County, Colorado

Dear Director:

Great Western Operating Company, LLC is planning to drill the above captioned well in accordance with the provisions of COGCC Rule 318A.e.

Great Western proposed wellbore spacing unit consists of:

- **T6N-R67W- Section 26: NW/4; Section 27: N/2; Section 28: E/2NE/4**
- **560 Acres**

The 30 day notification time period has passed and we have not received any objections to such well locations or proposed spacing unit, therefore Great Western hereby requests the Director to approve the above mentioned well. Great Western Operating Company, LLC respectfully requests that the COGCC review the enclosed map illustrating the proposed wellbore spacing unit.

Respectfully,

Callie Fiddes

Callie Fiddes
Regulatory Compliance Specialist
Great Western Operating Company, LLC

T6N, R67W, 6th P.M.

BASIS OF BEARINGS

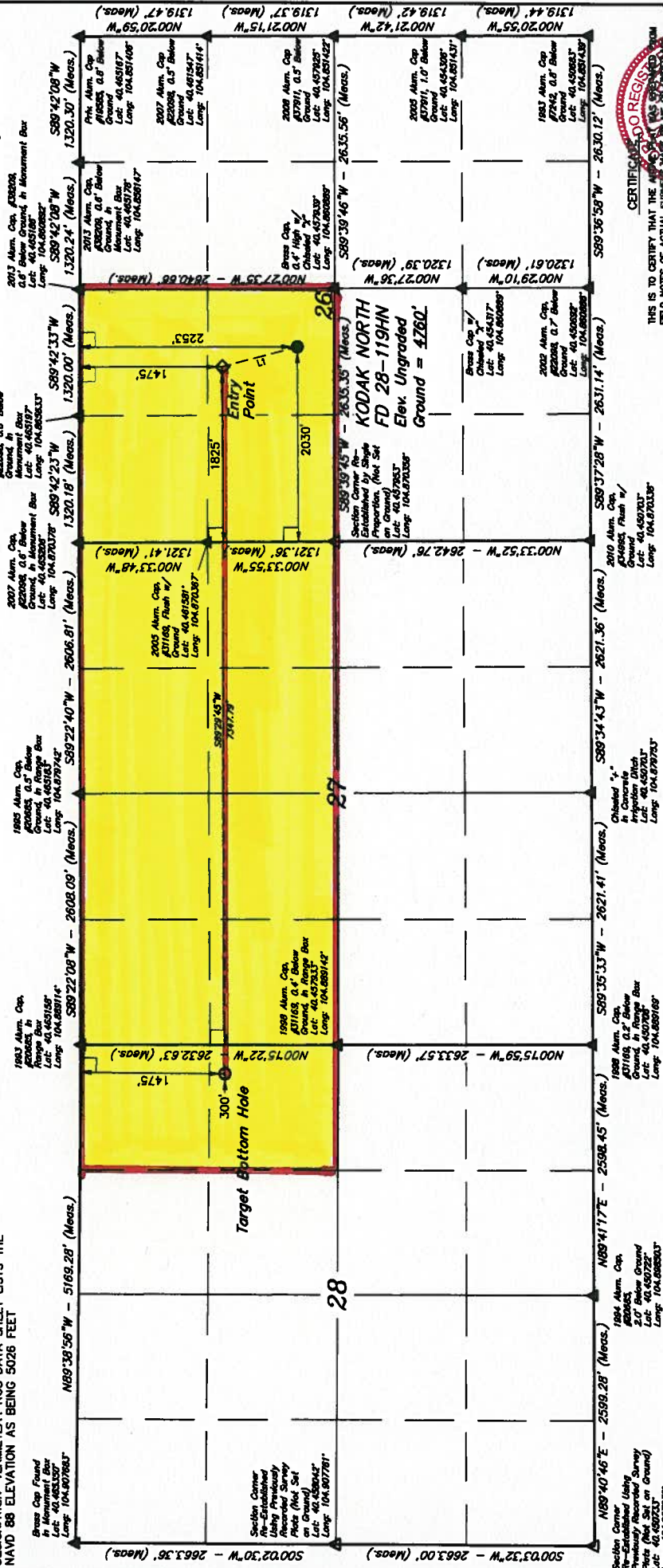
BASIS OF BEARINGS IS A G.P.S. OBSERVATION.

BASIS OF ELEVATION

USGS COOPERATIVE BASE NETWORK CONTROL STATION,
DESIGNATION "VERMILYEA": NGS DATA SHEET LISTS THE
NAVD 88 ELEVATION AS BEING 5026 FEET

GREAT WESTERN OIL & GAS COMPANY

Well location, KODAK NORTH FD 28-119HN, located
as shown in the SE 1/4 NW 1/4 of Section 26,
T6N, R67W, 6th P.M., Weld County, Colorado.



CERTIFICATE OF RECORDING
THIS IS TO CERTIFY THAT THE ABOVE SURVEY WAS MADE IN THE PRESENCE OF THE
FIELD NOTES OF ACTUAL SURVEY, AND IN THE PRESENCE OF THE
SUPERVISOR AND THAT THE SAME IS TRUE AND CORRECT TO THE
BEST OF MY KNOWLEDGE AND BELIEF.

RECEIVED LAND SURVEYING
STATE OF COLORADO
JAN 10 2008

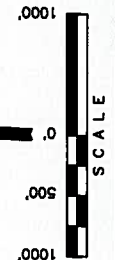
RECEIVED LAND SURVEYING
STATE OF COLORADO
JAN 10 2008

REVISED: 02-03-15

UNTAH ENGINEERING & LAND SURVEYING
86 SOUTH 200 EAST - VERNAL, UTAH 84078
(435) 789-1017

SCALE: 1" = 1000'	DATE SURVEYED: 10-21-13	DATE DRAWN: 10-30-13
FOOP = 1.6	PARTY: D.N. C.M. G.W. J.W.	REFERENCES: G.L.O. PLAT
	MEASUR: COOL	FILE: GREAT WESTERN OIL & GAS COMPANY

LINE TABLE		
LINE	DIRECTION	LENGTH
L1	N151°54'W	805.07



- LEGEND:
- 8" SYMBOL
 - PROPOSED WELLHEAD
 - ENTRY POINT
 - TARGET BOTTOM HOLE
 - SECTION CORNERS LOCATED
 - △ SECTION CORNERS RE-ESTABLISHED (Not Set on Ground)