

OPERATOR: **WPX ENERGY**

WELL NAME: GM 32-12
FIELD NAME: GRAND VALLEY
DRILLING RIG: NABORS 573
API #: 05-045-22470

LOCATION: SEC. 12 T7S R96W
SURFACE HOLE: 1181' FNL , 1912' FWL
BOTTOM HOLE: 2001' FNL , 1704' FEL
SCALE: 1"=100'



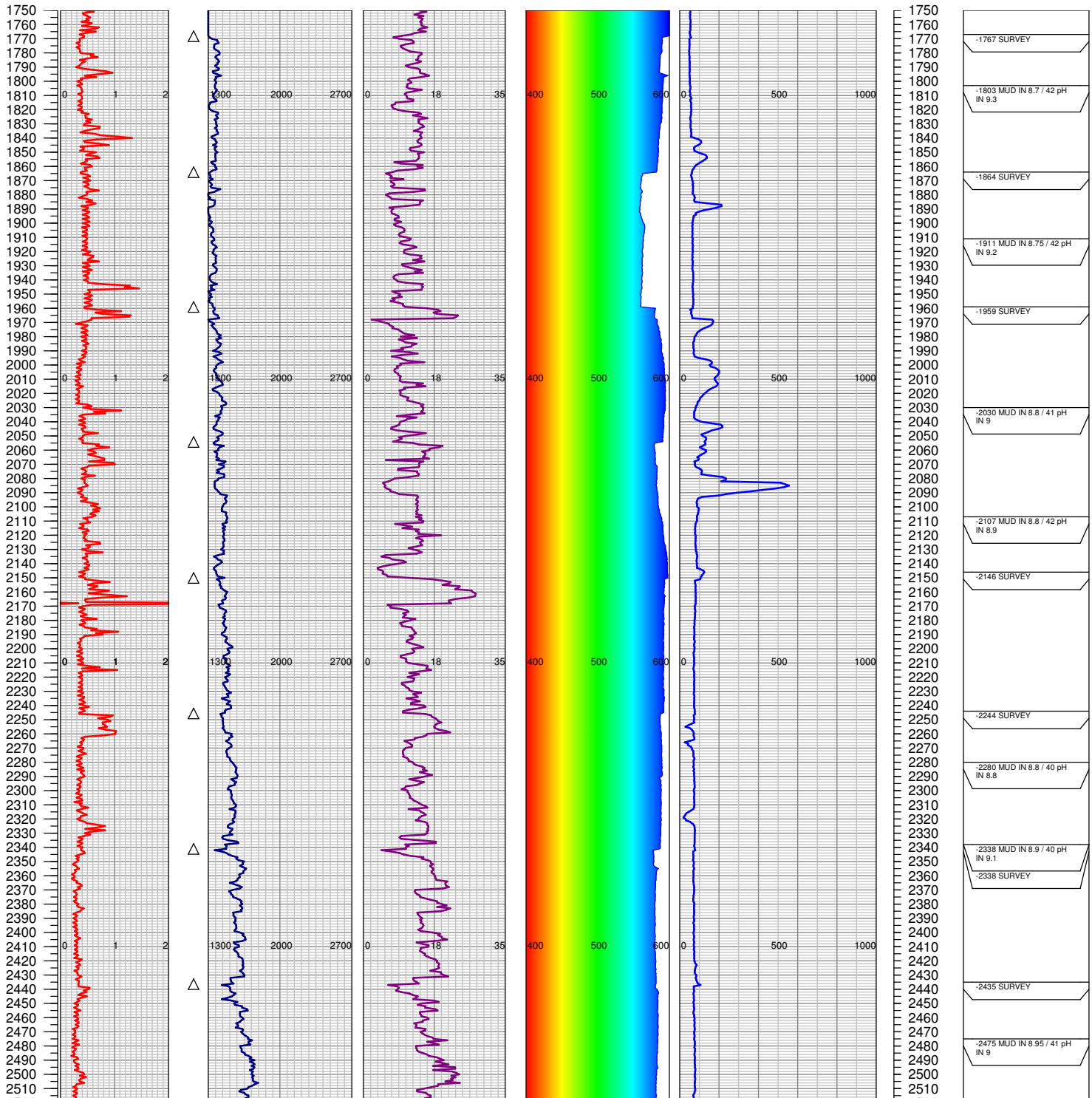
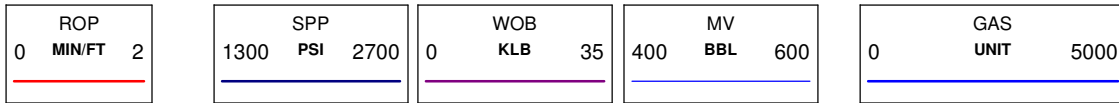
533 Bogart Lane, Unit A
Grand Junction, CO 81505
Office (970) 424-5162

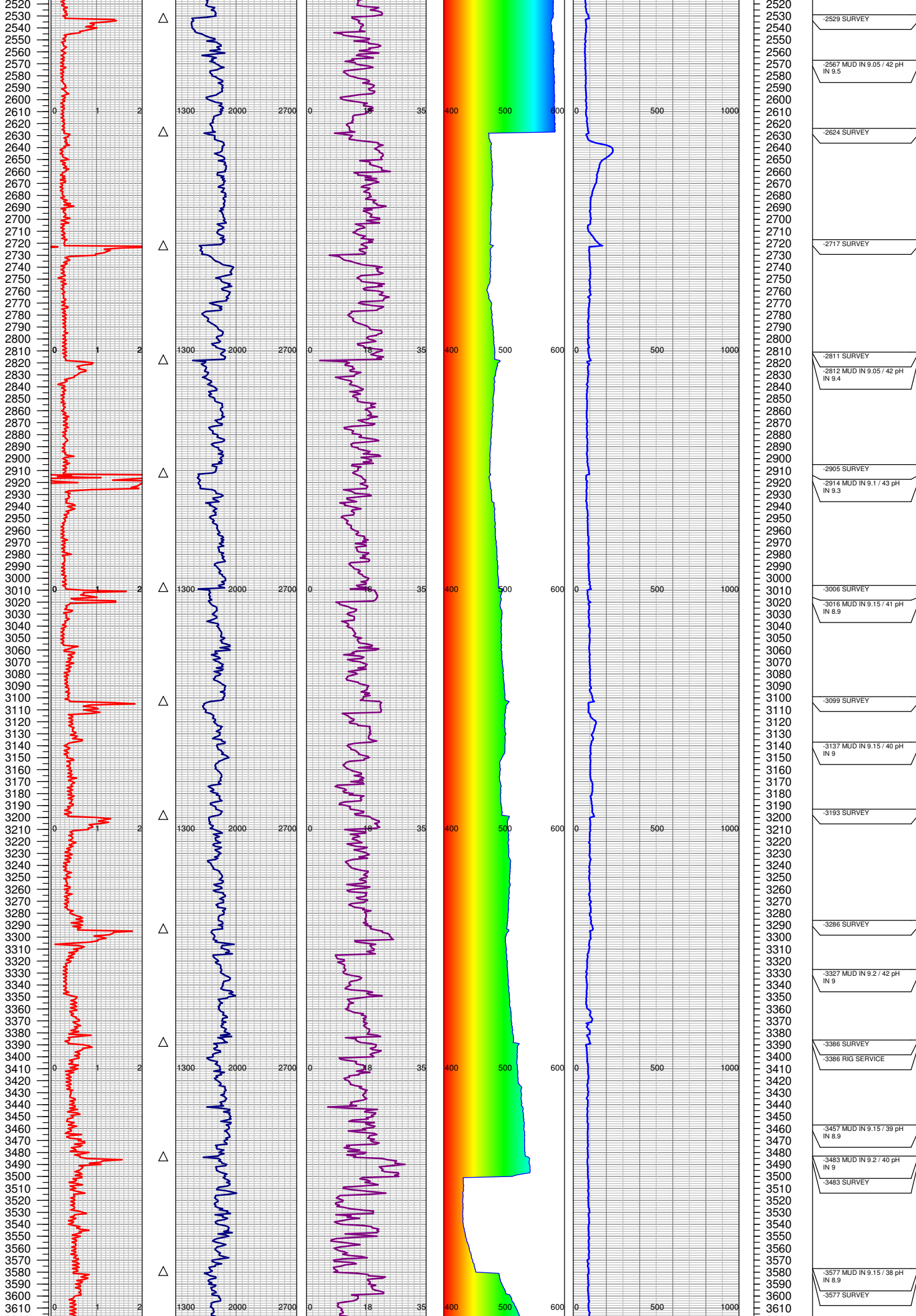
GM 32-12

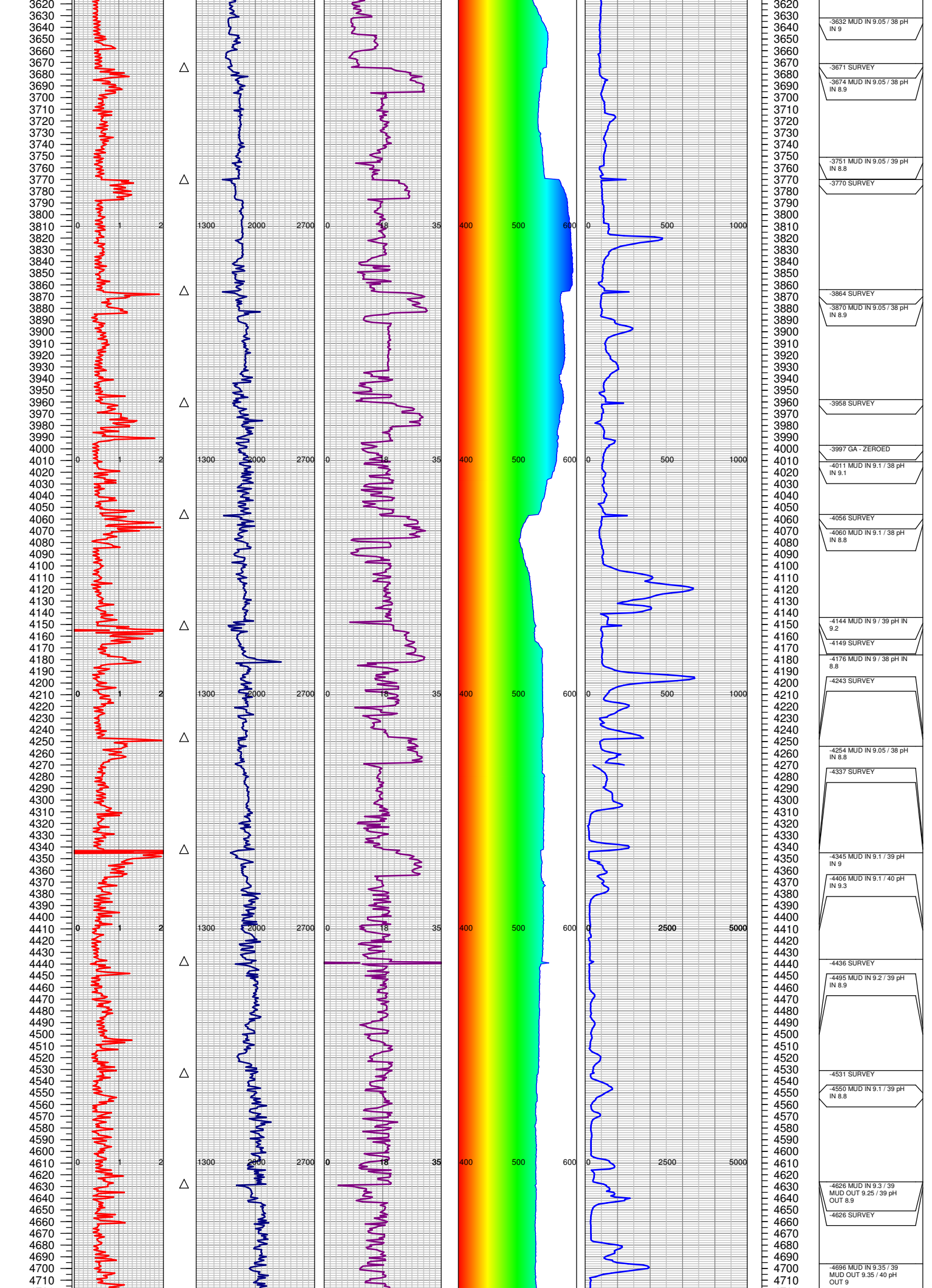
COUNTY: GARFIELD
STATE: COLORADO
DRILLING FLUID: LSND
LOGGER: LUKE DAVENPORT

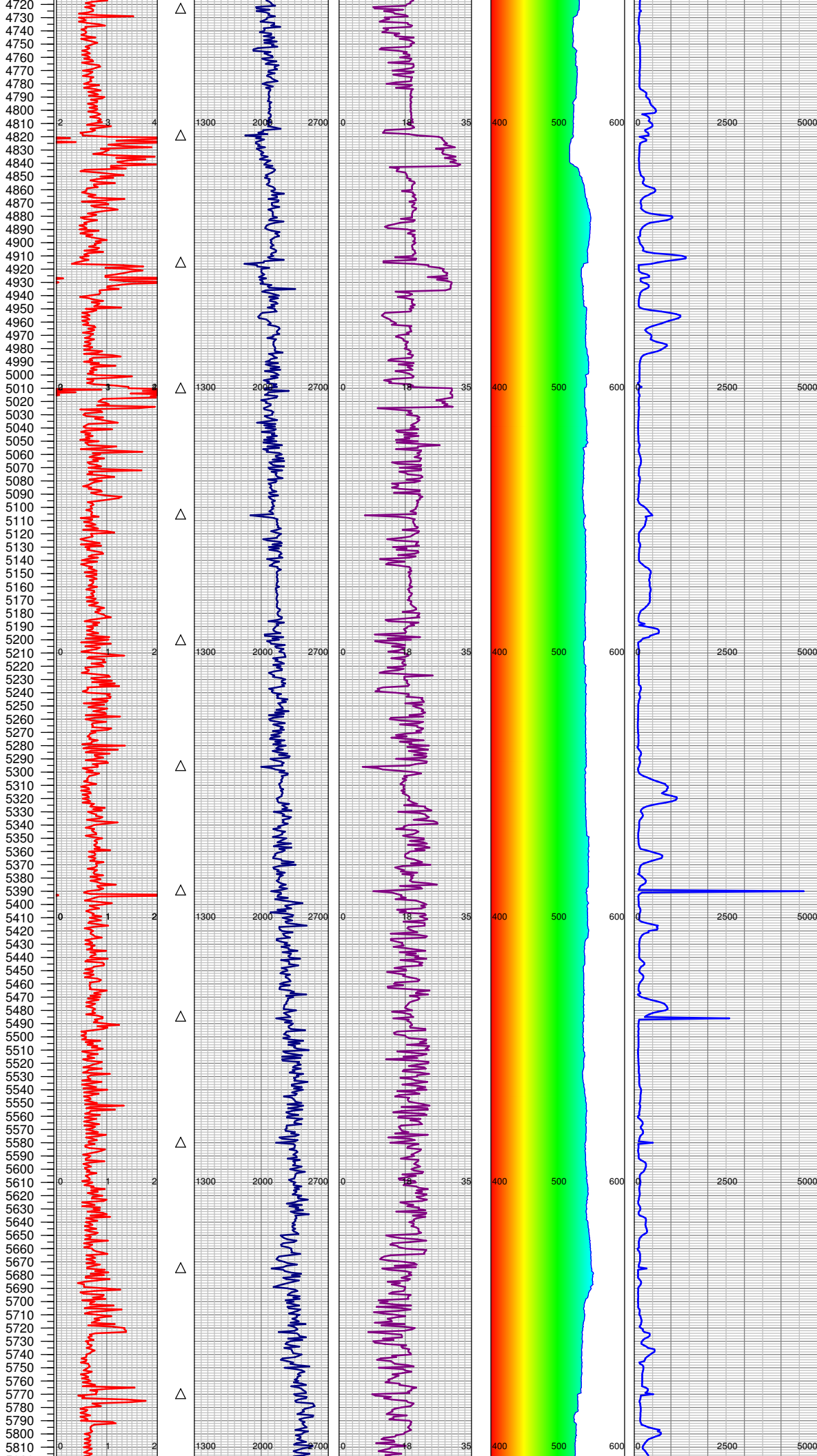
GROUND ELEVATION: 5125'
KELLY BUSHING: 5151'
TVD VS. MD = -550'
DEPTHS LOGGED: 1750'-6830'

SPUD DATE: 11/23/2014
FGS BEGIN LOGGING: 11/25/2014
TD DATE: 11/29/2014
DATES LOGGED: 11/25/2014-11/29/2014

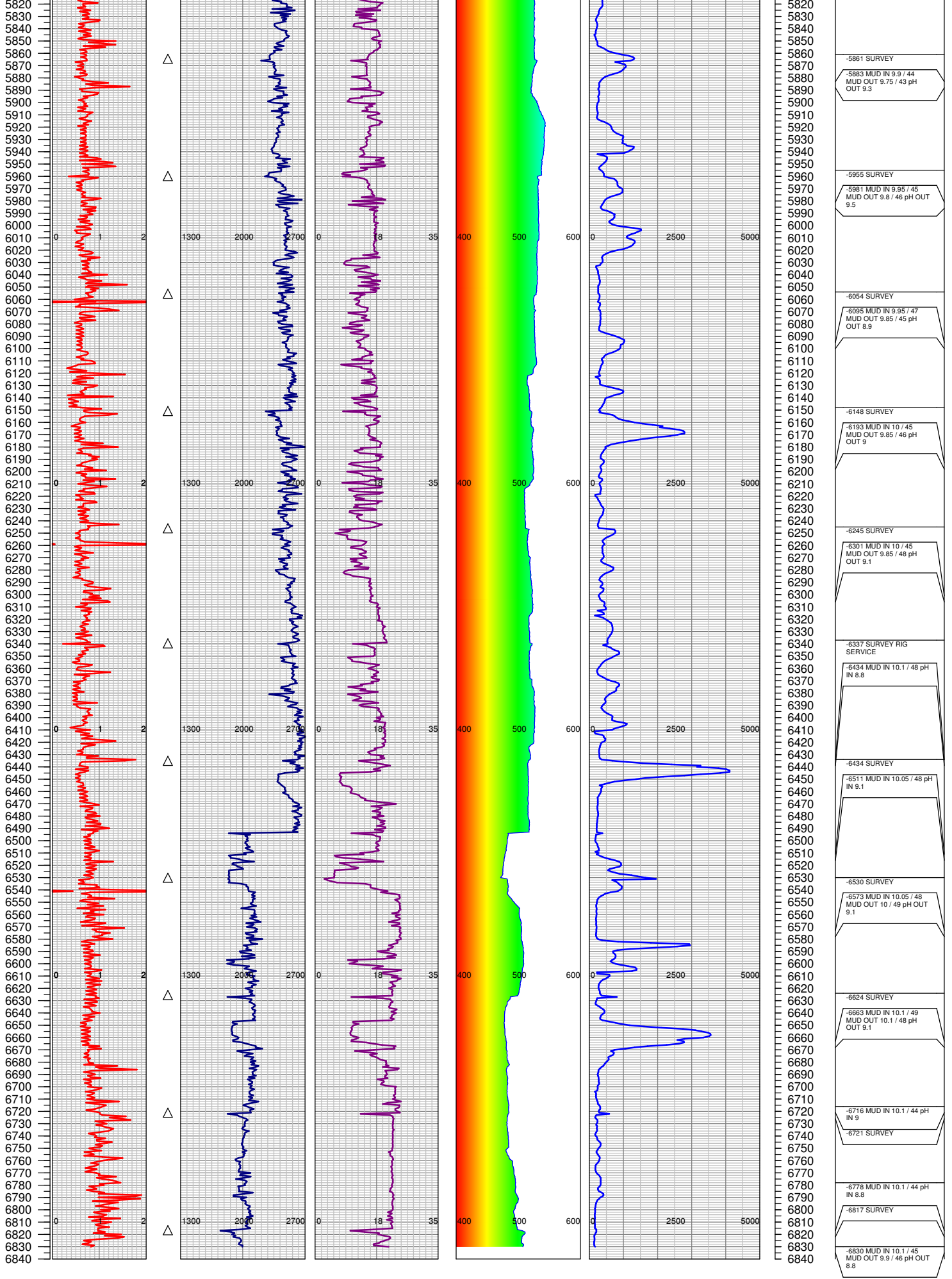








4720	-4721 SURVEY
4730	-4721 RIG SERVICE
4740	
4750	-4782 MUD IN 9.4 / 38
4760	MUD OUT 9.4 / 39 pH OUT 8.9
4770	
4780	
4790	
4800	
4810	
4820	-4816 SURVEY
4830	-4897 MUD IN 9.4 / 39
4840	MUD OUT 9.35 / 40 pH OUT 8.9
4850	
4860	
4870	
4880	
4890	
4900	
4910	-4911 SURVEY
4920	-4935 MUD IN 9.5 / 38
4930	MUD OUT 9.4 / 38 pH OUT 9
4940	
4950	-4951 MUD IN 9.5 / 39
4960	MUD OUT 9.5 / 40 pH OUT 8.9
4970	
4980	-5008 SURVEY
4990	
5000	
5010	-5009 MUD IN 9.5 / 39 pH IN 8.8
5020	
5030	-5102 MUD IN 9.6 / 39 pH IN 8.9
5040	
5050	
5060	
5070	
5080	
5090	
5100	-5102 SURVEY
5110	
5120	-5200 SURVEY
5130	
5140	
5150	
5160	
5170	
5180	
5190	
5200	-5201 MUD IN 9.6 / 41 pH IN 9.1
5210	
5220	-5265 MUD IN 9.6 / 41 pH IN 9
5230	
5240	
5250	
5260	
5270	
5280	
5290	-5294 SURVEY
5300	
5310	-5343 MUD IN 9.6 / 41 pH IN 9.2
5320	
5330	
5340	
5350	
5360	
5370	
5380	
5390	-5386 SURVEY
5400	-5450 MUD IN 9.65 / 40 pH IN 9.1
5410	
5420	
5430	
5440	
5450	
5460	
5470	
5480	-5483 SURVEY
5490	-5533 MUD IN 9.7 / 40 pH IN 9
5500	
5510	
5520	
5530	
5540	
5550	
5560	
5570	
5580	-5580 MUD IN 9.7 / 41 pH IN 9.1
5590	
5600	-5580 SURVEY
5610	
5620	
5630	
5640	
5650	
5660	
5670	-5673 SURVEY
5680	-5688 MUD IN 9.7 / 40 MUD OUT 9.55 / 42 pH OUT 9.2
5690	
5700	
5710	
5720	
5730	
5740	
5750	
5760	
5770	-5768 SURVEY
5780	-5777 MUD IN 9.9 / 42 MUD OUT 9.8 / 44 pH OUT 9
5790	
5800	
5810	



TOTAL DEPTH = 6830'

FGS RELEASED: 11/29/2014