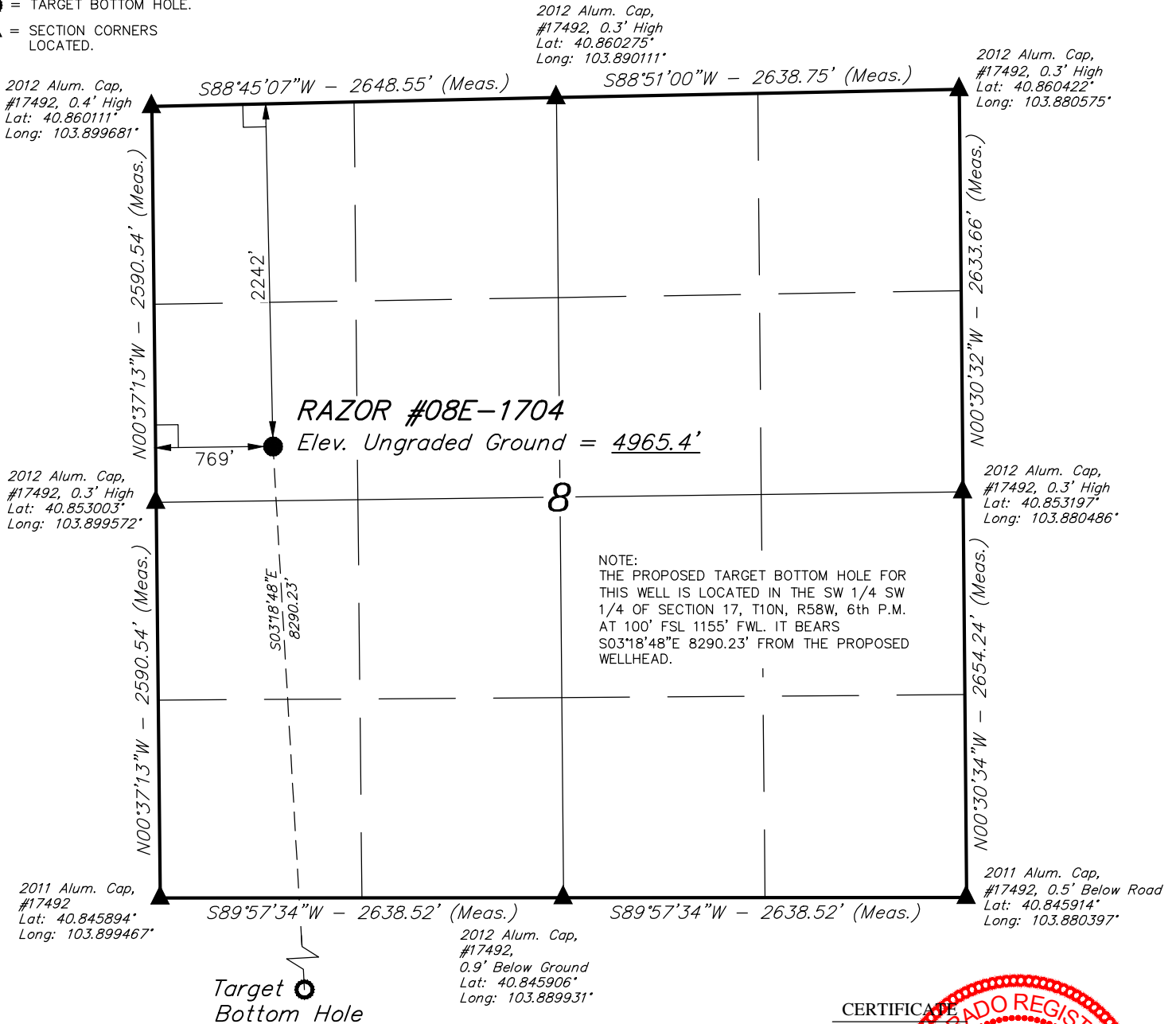


# LEGEND:

- = 90° SYMBOL
- = PROPOSED WELLHEAD.
- = TARGET BOTTOM HOLE.
- = SECTION CORNERS LOCATED.

## T10N, R58W, 6th P.M.

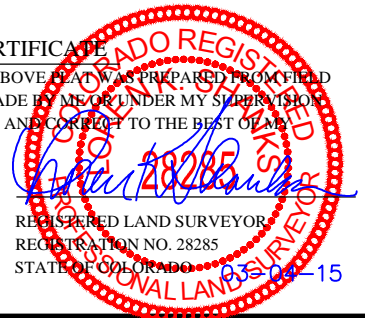


PDOP = 1.7

NAD 83 (SURFACE LOCATION)
LATITUDE = 40°51'14.42" (40.854006)
LONGITUDE = 103°53'48.51" (103.896808)
NAD 27 (SURFACE LOCATION)
LATITUDE = 40°51'14.47" (40.854019)
LONGITUDE = 103°53'46.70" (103.896306)



CERTIFICATE  
THIS IS TO CERTIFY THAT THE ABOVE PLAT WAS PREPARED FROM FIELD NOTES OF ACTUAL SURVEYS MADE BY ME OR UNDER MY SUPERVISION AND THAT THE SAME ARE TRUE AND CORRECT TO THE BEST OF MY KNOWLEDGE AND BELIEF.



**BASIS OF BEARINGS**  
BASIS OF BEARINGS IS A G.P.S. OBSERVATION  
**BASIS OF ELEVATION**

SPOT ELEVATION LOCATED AT THE NORTHEAST CORNER OF SECTION 15, T9N, R58W, 6th P.M. TAKEN FROM THE GATEHOOK SPRING, QUADRANGLE, COLORADO, WELD COUNTY, 7.5 MINUTE QUAD (TOPOGRAPHIC MAP) PUBLISHED BY THE UNITED STATES DEPARTMENT OF THE INTERIOR, GEOLOGICAL SURVEY. SAID ELEVATION IS MARKED AS BEING 4679 FEET.

**WHITING OIL & GAS CORP.**

**RAZOR #08E-1704 (SURFACE LOCATION)  
SW 1/4 NW 1/4, SECTION 8, T10N, R58W, 6th P.M.  
WELD COUNTY, COLORADO**

SURVEYED BY: DALLAS NIELSEN, J.S.	DATE: 12-03-14
DRAWN BY: T.C.	DATE DRAWN: 12-15-14
SCALE: 1" = 1000'	REVISED: 03-04-15 K.B.

**WELL LOCATION PLAT**



**UELS, LLC**  
Corporate Office \* 85 South 200 East  
Vernal, UT 84078 \* (435) 789-1017



**LEGEND:**

└─ = 90° SYMBOL

● = PROPOSED WELLHEAD.

○ = TARGET BOTTOM HOLE.

▲ = SECTION CORNERS LOCATED.

Surface Location ● **T10N, R58W, 6th P.M.**

2012 Alum. Cap,  
#17492  
0.9' Below Ground  
Lat: 40.845906°  
Long: 103.889931°

2011 Alum. Cap,  
#17492,  
0.5' Below Road  
Lat: 40.845914°  
Long: 103.880397°

2011 Alum. Cap,  
#17492  
Lat: 40.845894°  
Long: 103.899467°

S89°57'34"W - 2638.52' (Meas.)

S89°57'34"W - 2638.52' (Meas.)

N00°39'41"W - 2705.65' (Meas.)

N00°28'14"W - 2730.55' (Meas.)

2012 Alum. Cap,  
#17492, Flush W/Ground  
Lat: 40.838472°  
Long: 103.899347°

N00°39'41"W - 2705.65' (Meas.)

N00°28'14"W - 2730.55' (Meas.)

17

NOTE:  
THE PROPOSED TARGET BOTTOM HOLE  
BEARS S03°18'48"E 8290.23' FROM THE  
PROPOSED WELLHEAD WHICH IS LOCATED IN  
THE SW 1/4 NW 1/4 OF SECTION 8, T10N,  
R58W, 6th P.M. AT 2242' FNL 769' FWL.

**RAZOR #08E-1704**  
Target Bottom Hole

1155'

S03°18'48"E  
8290.23'

2011 Alum. Cap,  
#17492, Wooden  
Fence Posts  
Lat: 40.831047°  
Long: 103.899228°

N89°29'46"W  
2629.81' (Meas.)

N89°29'46"W - 2629.81' (Meas.)

2012 Alum. Cap,  
#28285, 0.3' High  
Lat: 40.830989°  
Long: 103.889725°

2011 Alum. Cap,  
#17492  
Lat: 40.830928°  
Long: 103.880225°

**NAD 83 (TARGET BOTTOM HOLE)**

LATITUDE = 40°49'52.67" (40.831297)  
LONGITUDE = 103°53'42.21" (103.895058)

**NAD 27 (TARGET BOTTOM HOLE)**

LATITUDE = 40°49'52.72" (40.831311)  
LONGITUDE = 103°53'40.40" (103.894556)

**CERTIFICATE**

THIS IS TO CERTIFY THAT THE ABOVE PLAT WAS PREPARED FROM FIELD  
NOTES OF ACTUAL SURVEYS MADE BY ME OR UNDER MY SUPERVISION  
AND THAT THE SAME ARE TRUE AND CORRECT TO THE BEST OF MY  
KNOWLEDGE AND BELIEF.

REGISTERED LAND SURVEYOR  
REGISTRATION NO. 28285  
STATE OF COLORADO

03-04-15

**BASIS OF BEARINGS**

BASIS OF BEARINGS IS A G.P.S. OBSERVATION

**BASIS OF ELEVATION**

SPOT ELEVATION LOCATED AT THE NORTHEAST CORNER OF SECTION 15, T9N, R58W,  
6th P.M. TAKEN FROM THE GATEHOOK SPRING, QUADRANGLE, COLORADO, WELD  
COUNTY, 7.5 MINUTE QUAD (TOPOGRAPHIC MAP) PUBLISHED BY THE UNITED STATES  
DEPARTMENT OF THE INTERIOR, GEOLOGICAL SURVEY. SAID ELEVATION IS MARKED  
AS BEING 4679 FEET.

**WHITING OIL & GAS CORP.**

**RAZOR #08E-1704 (TARGET BOTTOM HOLE)**  
**SW 1/4 SW 1/4, SECTION 17, T10N, R58W, 6th P.M.**  
**WELD COUNTY, COLORADO**

SURVEYED BY: DALLAS NIELSEN, J.S.	DATE: 12-03-14
DRAWN BY: T.C.	DATE DRAWN: 12-15-14
SCALE: 1" = 1000'	REVISED: 03-04-15 K.B.

**WELL LOCATION PLAT**

**UELS, LLC**  
Corporate Office \* 85 South 200 East  
Vernal, UT 84078 \* (435) 789-1017