



Empirica

Scale: 5" / 100'
Measured Depth Log

Well Name Kodak #10

Location Kodak Pad Sec.27-T6N-R67W

State Colorado

Country USA

API Number na

Region DJ Basin

Spud Date 1/1/2014

Surface Coordinates SHL: 1341'FNL, 1042'FWL, Sec.27

Lat: 40.46149

Long: 104.88538

County Weld

Rig Number Frontier #10

AFE # na

Field Wattenberg

Drilling Completed TBD

Bottom Hole Coordinates BHL: 2207'FNL, 460'FWL, Sec. 29

Ground Elevation 4,770'

Logged Interval 6,620

Formation Niobrara B Chalk

Type of Drilling Fluid Water Based

K.B. Elevation 4,792'

Total Depth TBD

Company Extraction Oil & Gas
Address 1888 Sherman S
Denver, CO 802

Name Jared Rouse
Company Extraction Oil & Gas
Address 1888 Sherman S
Denver, CO 802

Equipment ML-07
Comments Start:
Stand:
TD: 1-
Services Provided 2-mar
On Site

Other Symbols

	ORGANIC		FORMATION TOP		L LITHOGRAPHIC	
Show		PINPOINT		GAS SHOW		MX MICROXLN
AD		VUGGY		MINDEPTH MN DEPTH		MS MUDSTONE
EN		NORMAL FAULT		OIL SHOW		PS PACKSTONE
QUESTIONABLE		OVERTURNED STRATA		SUBANG		WS WACKESTONE
QUESTIONABLE		BIT		REVERSE FAULT		
osity		CASING		SIDE WALL CORE (LEFT)	Textures	
osity		CONNECTION (LEFT)		SIDE WALL CORE (RIGHT)		M MODERATE
osity		CONNECTION (RIGHT)		SLIDE		P POOR
osity		CONNECTION GAS		SURVEY		W WELL
osity		CORE - LOST		TRIP GAS		E EARTHY
osity		CORE - RECOVERED		WIRELINE TESTED - LEFT		FX FINELYXLN
osity		DST INTERVAL		WIRELINE TESTED - RT		GS GRAINSTONE
osity		FAULT				

ROP
 ROF
 GAMMA
 GAS

Extraction O&G
 Weld County, Colorado
 Spud Date: 1-1-14
 Surface Casing @ 798'
 Intermediate Casing @ x,xxx'
 2-man Logging / Geosteering Began: 1-2-14

ROP (min/h/ft)
 2500
 2000
 0

Rig Air Down

329u

Slide/Rotate
 Depth Labels

100 units = 1% methane

AVG BGG: 150u

Total Gas & Chromatograph

GAS
 C1
 C2
 C3
 C4

Depths Correspond to 0
 Driller's Pipe Tally
 Logarithmic Gas
 Scale 1 - 10,000 units
 unless otherwise noted

6000

MD: 6,679'
 TVD: 6,510.49'
 Inclination: 14.49°
 Azimuth: 222.3°
 VS: 918.28'

6500

Well Bore
 TVD

TVD (ft)

TVD (ft)

6620-6680 60% SLTST 40% SS: pred dk gy- dk gy- brn, occ lt gy, pred frm- sl hd, sb blk- pty, pred vf gr, mod sdy intbds, tr dk brn shy intbds, mod srt, arg ip, w cmtd, abnt lith frags, NFOSC.

6680-6740 60% SLTST 40% SS: pred dk gy- dk gy brn, occ lt gy, pred frm- sl hd, sb blk- pty, pred vf gr, mod sdy intbds, tr dk brn shy intbds, mod srt, arg ip, w cmtd, abnt lith frags, NFOSC.

6740-6800
 gy brn, occ
 pred vf gr,
 mod srt, a

Oil Show

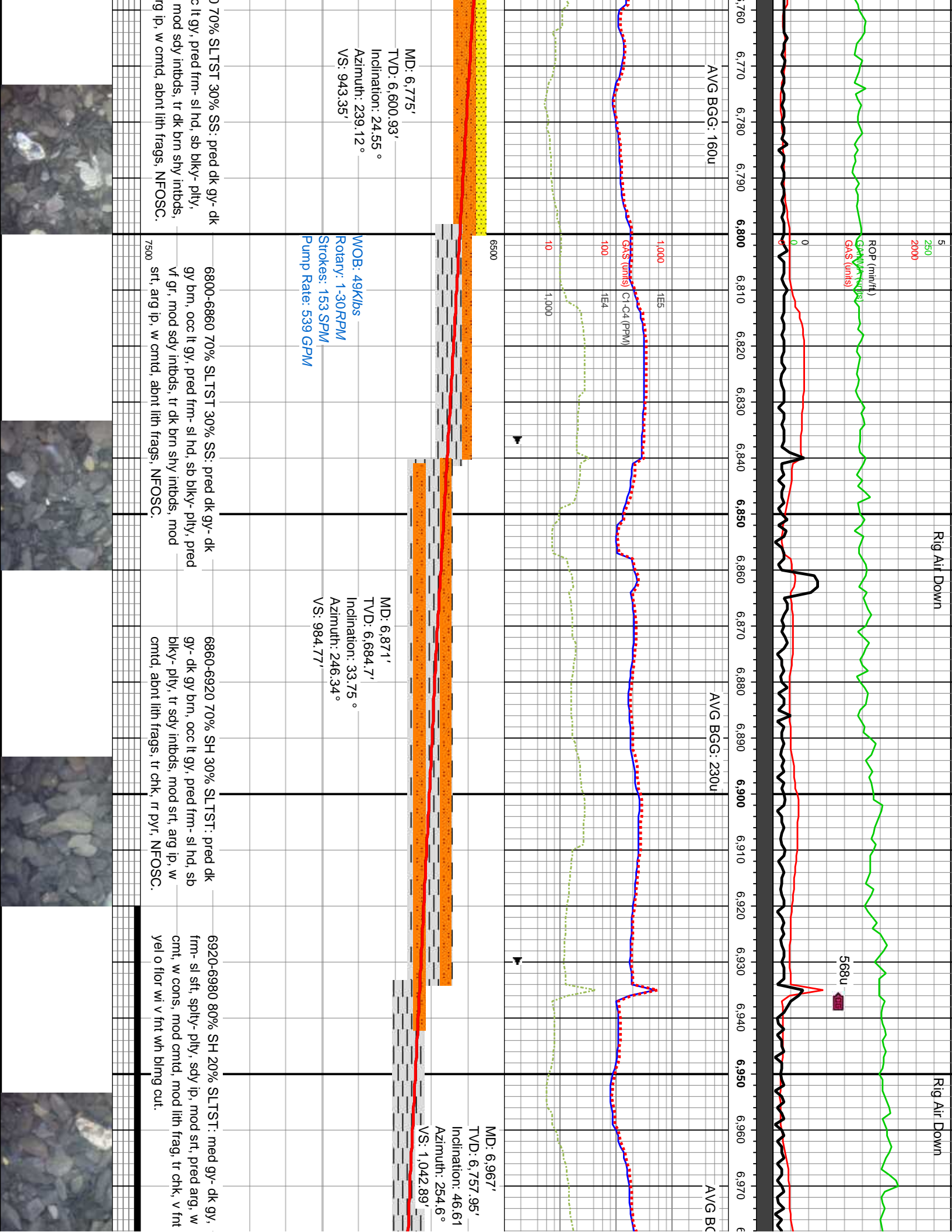
1-14

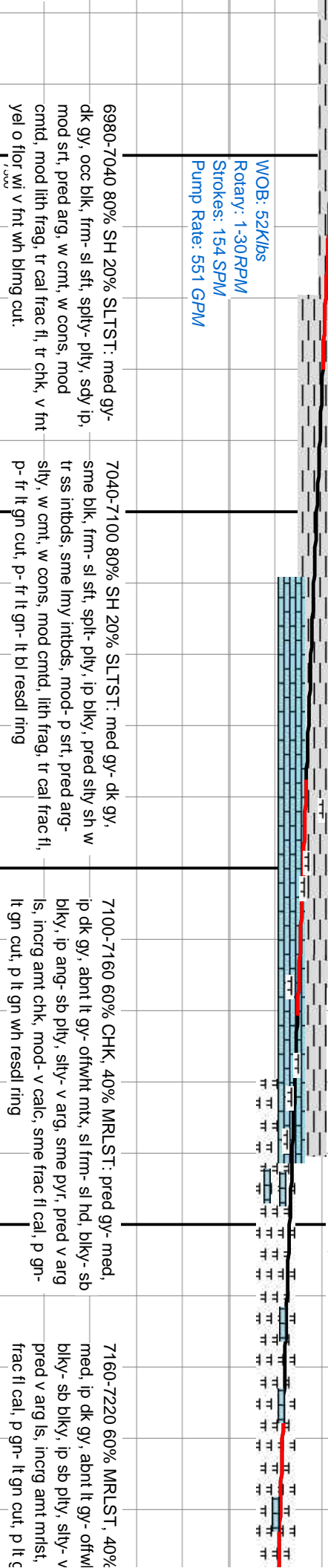
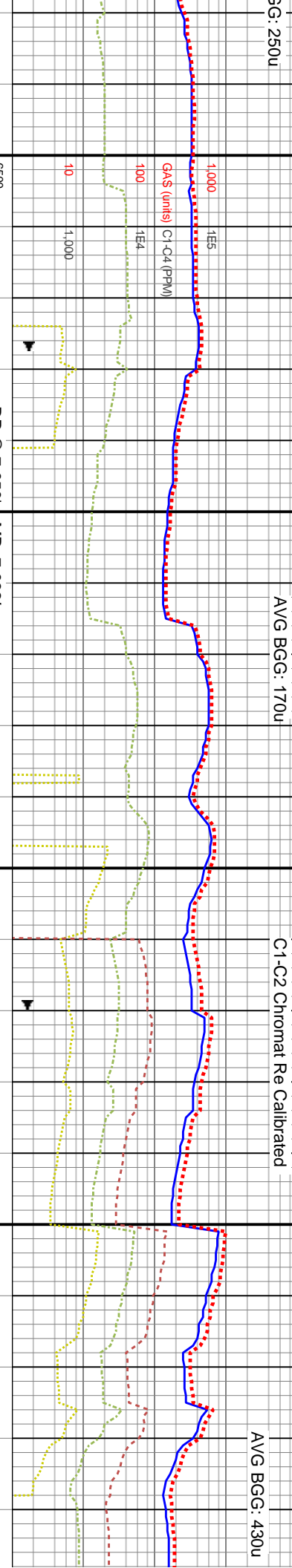
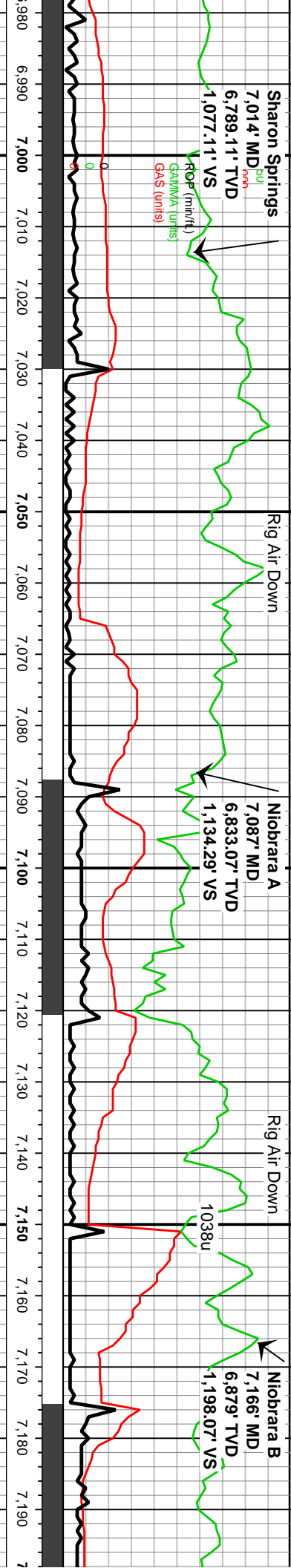
7000

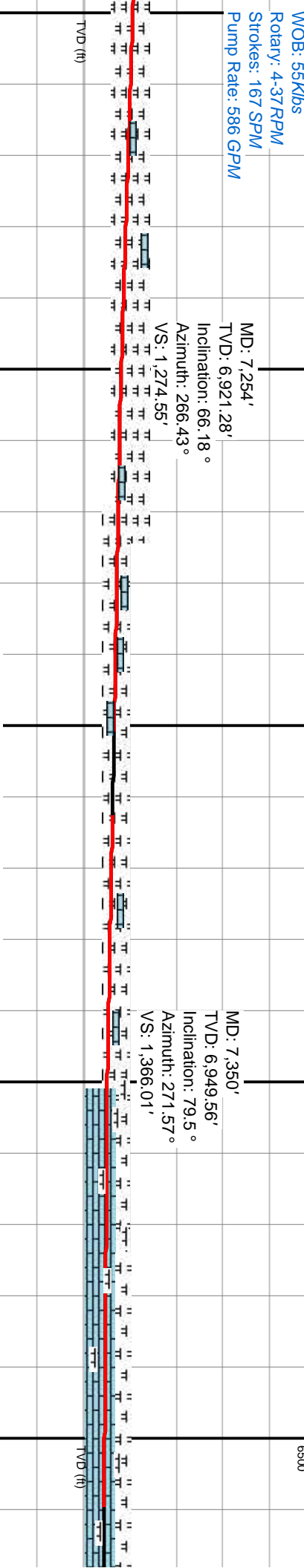
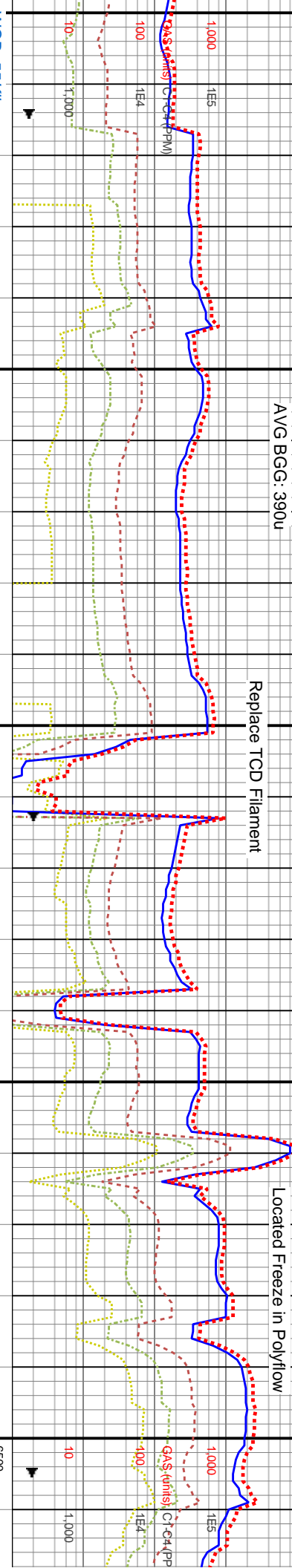
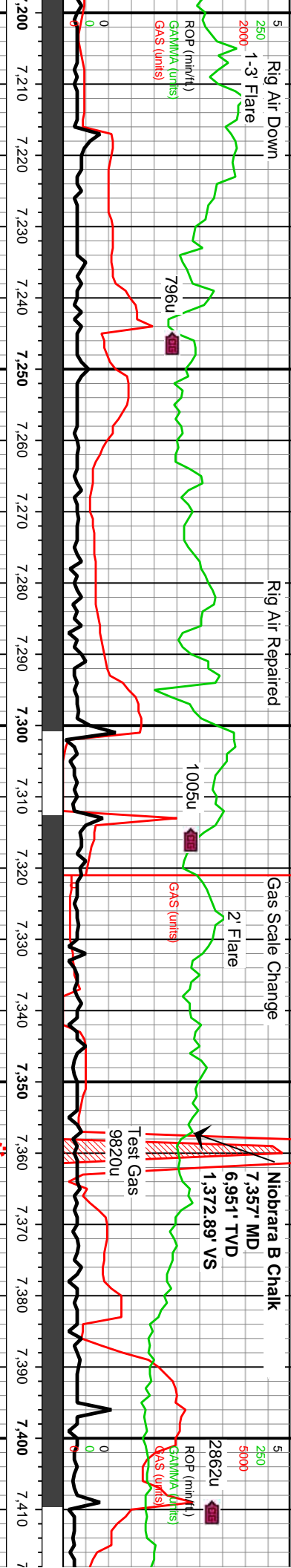
7500

Images







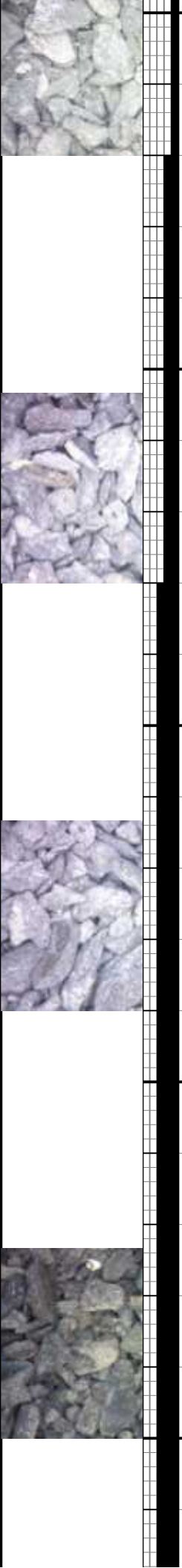


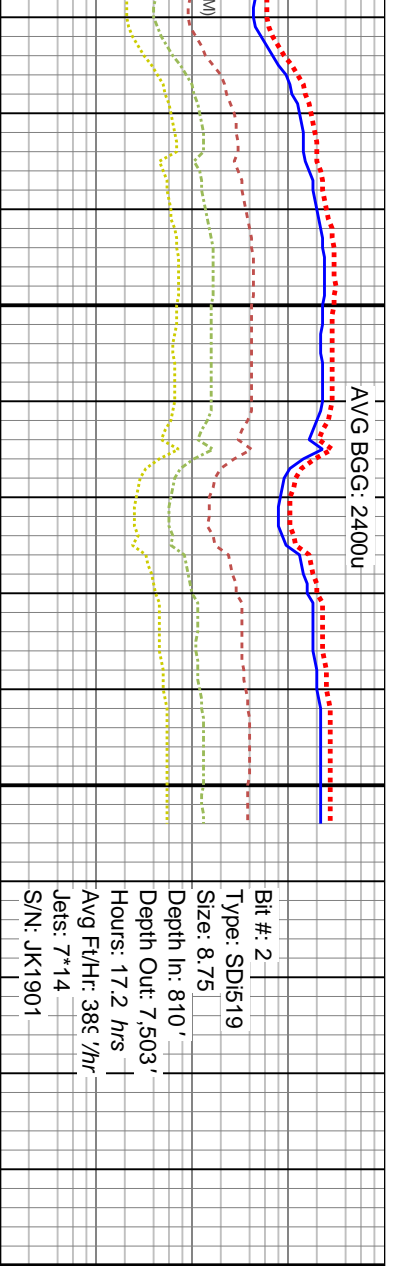
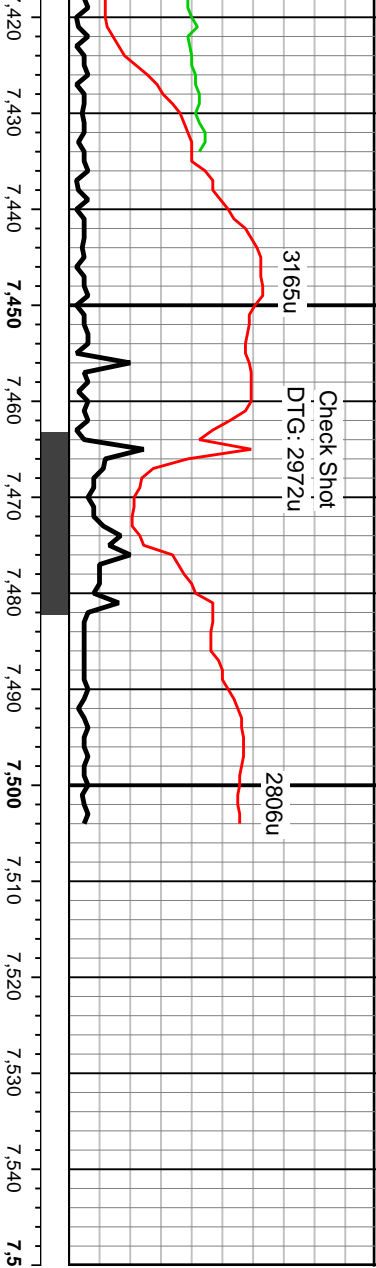
7220-7280 50% CHK, 50% MRLST: pred gy- med, ip dk gy, abnt lt gy- offwnt mtx, sl frm- sl hd, blkly- sb blkly, ip ang- sb ply, sly- v arg, sme fos incl, tr pyr, tr bent, pred v arg ls, incrg amt chk, mod- v calc, sme frac fl cal, g- fr lt gn cut, fr lt gn wh resdl ring

7280-7340 50% CHK, 50% MRLST: pred gy- med, ip dk gy, abnt lt gy- offwnt mtx, sl frm- sl hd, blkly- sb blkly, ip ang- sb ply, sly- v arg, sme fos incl, tr pyr, tr bent, pred v arg ls, incrg amt chk, mod- v calc, sme frac fl cal, g- fr gn- lt gn cut, fr lt gn wh resdl ring

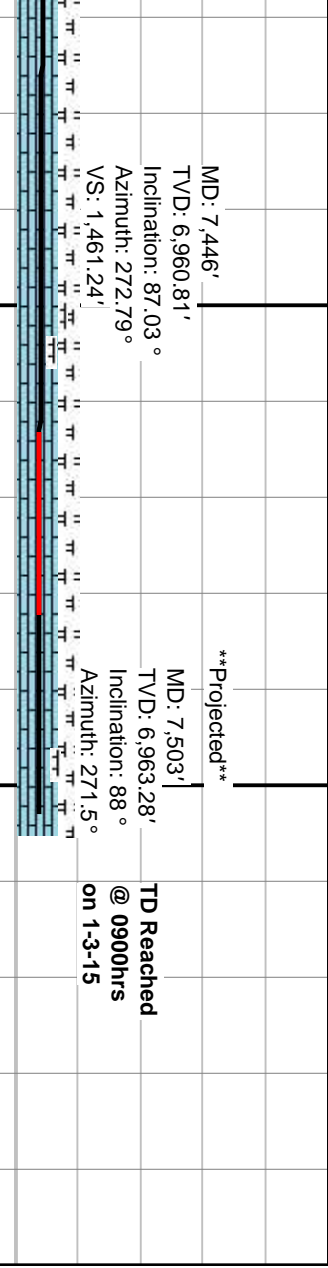
7340-7400 90% CHK, 10% MRLST: pred gy- med, ip dk gy, abnt lt gy- offwnt mtx, sl frm- sl hd, blkly- sb blkly, ip ang- sb ply, sly- v arg, sme pyr, pred v arg ls w occ imbd mntst, sme fos incl, mod- v calc, tr frac fl cal, g- fr gn- lt gn cut, fr- g lt gn wh resdl ring

7400-7460 med, ip dk gy, abnt lt gy- offwnt mtx, sl frm- sl hd, blkly- sb blkly, ip ang- sb ply, sly- v arg, sme pyr, pred v arg ls w occ imbd mntst, sme fos incl, mod- v calc, sme frac fl cal, g- fr gn- lt gn cut, fr- g lt gn wh resdl ring





Bit #: 2
Type: SD1519
Size: 8.75
Depth In: 810'
Depth Out: 7,503'
Hours: 17.2 hrs
Avg Ft/Hr: 389' /hr
Jets: 7*14
S/N: JK1901



TD Reached
@ 0900hrs
on 1-3-15

90% CHK, 10% MRLST: pred gy-
gy, about lt gy- ofwht mtz, sl frm- sl hd,
/; ip ang- sb ply, slty- v arg, sme pyr,
s w occ:ntbd mntst, sme fos incl,
tr frac fl cal, g- fr gn- lt gn cut, fr- g lt
ring

7460-7503 CHK: pred gy- lt gy, ip
med gy, about lt gy- ofwht mtz, pred
frm- sl hd, blkY- sb blkY, ip sb ply, sl
slty- arg, tr pyr, pred arg ls w rr intbd
mntst, sme fos incl, mod- v calc, tr
frac fl cal, g- fr gn- lt gn cut, fr- g lt gn
wh resdl ring

