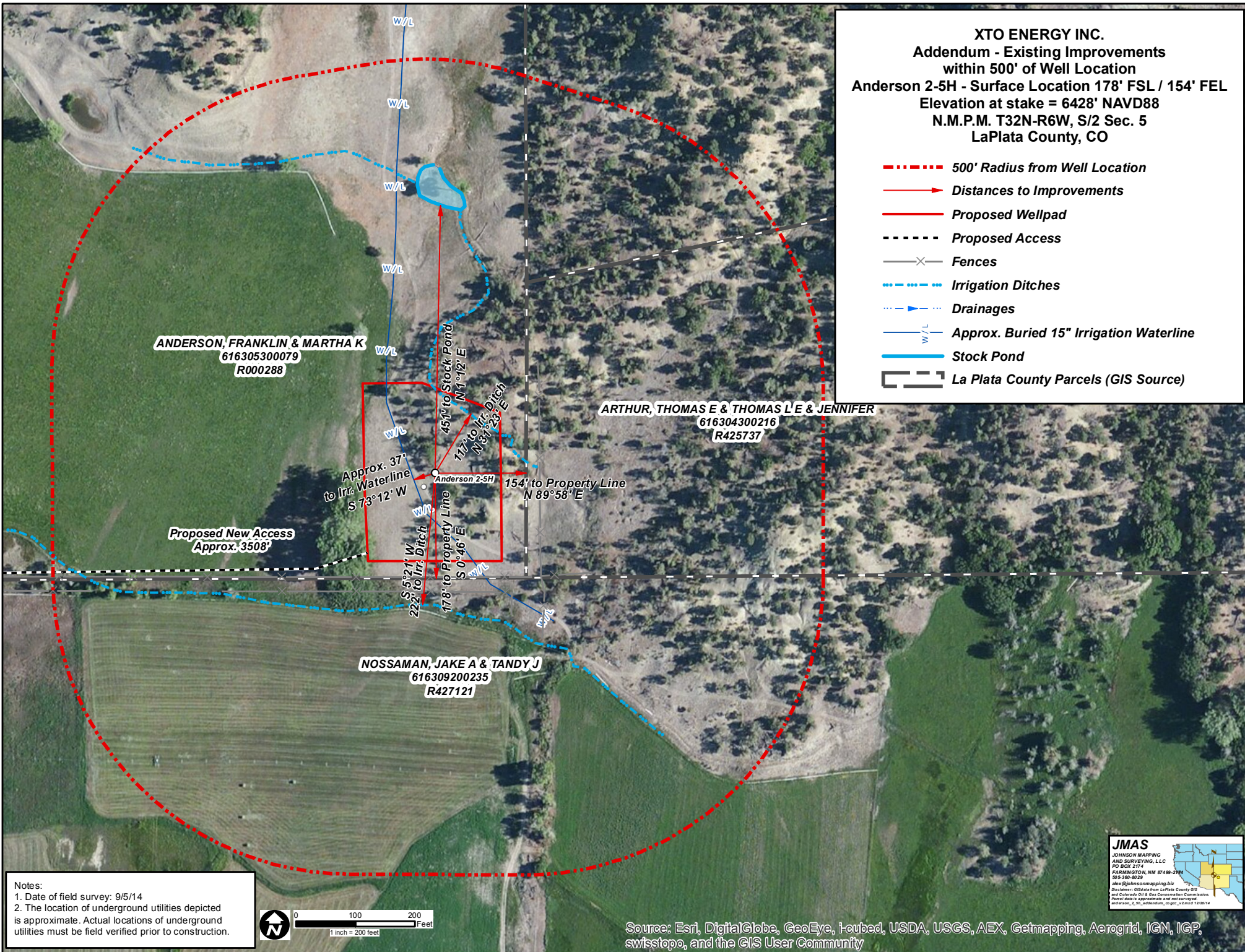
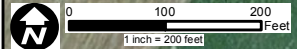


XTO ENERGY INC.
Addendum - Existing Improvements
within 500' of Well Location
Anderson 2-5H - Surface Location 178' FSL / 154' FEL
Elevation at stake = 6428' NAVD88
N.M.P.M. T32N-R6W, S/2 Sec. 5
LaPlata County, CO

- - - - - 500' Radius from Well Location
- Distances to Improvements
- ▭ Proposed Wellpad
- - - - - Proposed Access
- X— Fences
- - - - - Irrigation Ditches
- - - - - Drainages
- w/l Approx. Buried 15" Irrigation Waterline
- ▭ Stock Pond
- ▭ La Plata County Parcels (GIS Source)



Notes:
 1. Date of field survey: 9/5/14
 2. The location of underground utilities depicted is approximate. Actual locations of underground utilities must be field verified prior to construction.



Source: Esri, DigitalGlobe, GeoEye, i-cubed, USDA, USGS, AEX, Getmapping, Aerogrid, IGN, IGP, swisstopo, and the GIS User Community

JMAS
 JOHNSON MAPPING
 AND SURVEYING, LLC
 PO BOX 2774
 FARMINGTON, NM 87499-2774
 505-380-8025
 www.jmasm.com/jmasmappng.biz

Disclaimer: GIS data from La Plata County GIS and Colorado GIS & Data Collaborative Center. Printed data is approximate and not for legal use. Anderson_2-5H_10/14/14