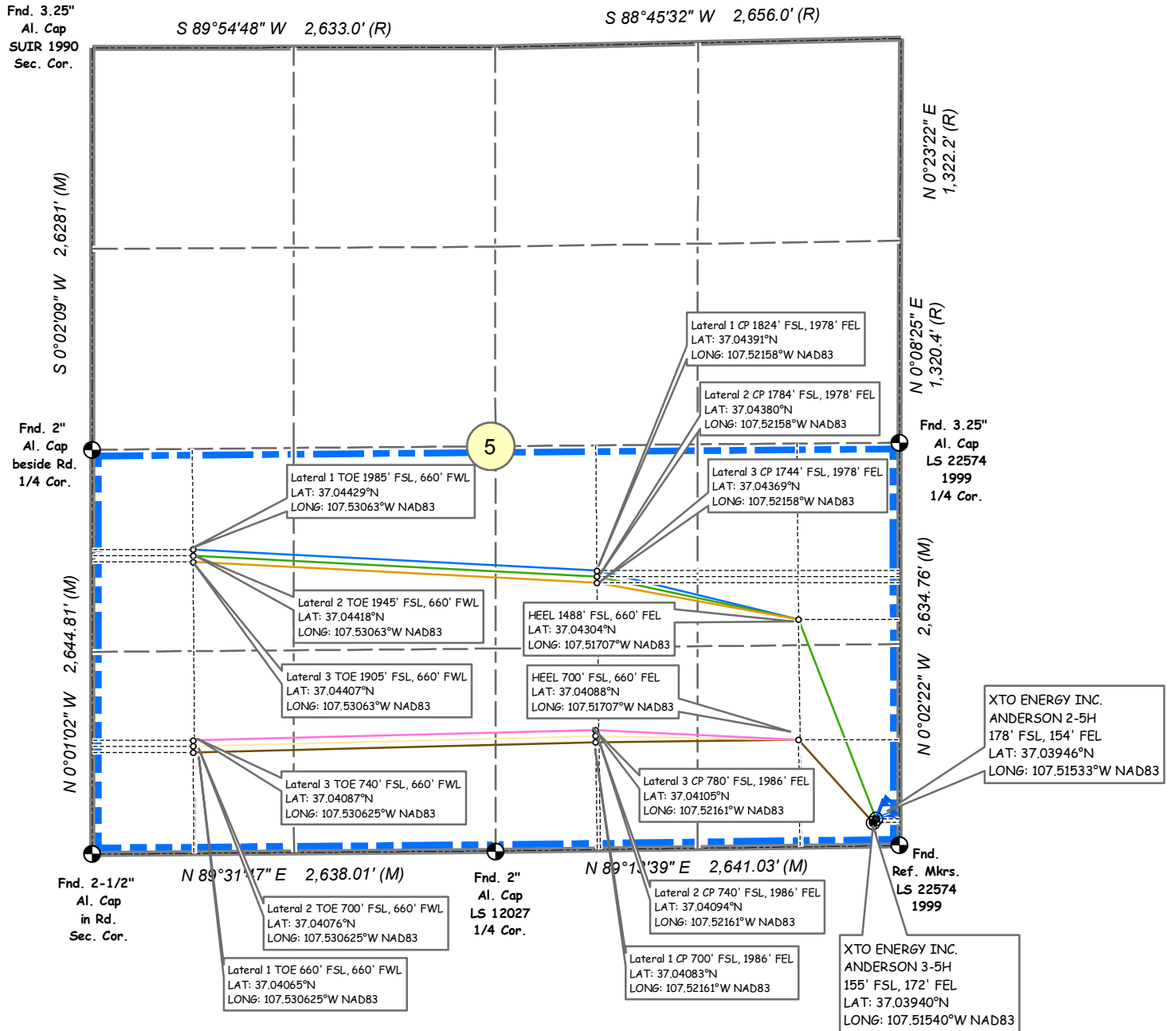


# XTO ENERGY INC.

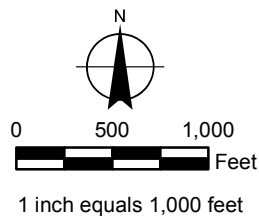
ANDERSON 2-5H SURFACE HOLE: 178' FSL, 154' FEL  
ANDERSON 3-5H SURFACE HOLE: 155' FSL, 172' FEL  
SECTION 5, T-32-N, R-06-W, N.M.P.M.,  
LA PLATA COUNTY, COLORADO



## Legend

- STAKED LOCATION
- DRILL PATH NODE
- OFFSET DIMENSION
- 3-5H LATERAL 1
- 3-5H LATERAL 2
- 3-5H LATERAL 3
- OFFSET DIMENSION
- 2-5H LATERAL 1
- 2-5H LATERAL 3
- 2-5H LATERAL 2
- LEASE AREA

## MULTI WELL PLAN



## NOTES:

1. SURFACE USE IS GRAZING.
2. SEE ATTACHED ADDENDUM FOR IMPROVEMENTS, AND PROPERTY LINES WITHIN 200' OF BORE.
3. DATE OF SURVEY: 5 Sept. 2014
4. BASIS OF ELEVATION = NAVD88 AS PREDICTED BY GEOID03.
5. GPS POSITIONS COLLECTED AT PDOP VALUE OF 6 OR LESS.
6. LOCATION OFFSETS TO SECTION LINE MEASURED AT 90° TO SECTION LINE.
7. (M) INDICATES MEASURED VALUE. (R) INDICATES RECORD PLAT INFORMATION

XEN1552\_3MULTIWELL.MXD 20141209

