

# Verdad Oil & Gas Corporation

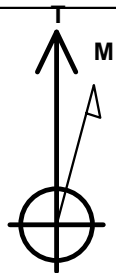
Well Name: **Cervi 03N-63W-34-1N**

Surface Location: Cervi 03N-63W-34-1N Sec.34-T3N-R63W  
North American Datum 1983 , US State Plane 1983 , Colorado Northern Zone  
Ground Elevation: 4773.0

+N/-S	+E/-W	Northing	Easting	Latitude	Longitude	Slot
0.0	0.0	1313385.92	3299378.92	40.188675	-104.428385	
RKB - 16.2' WELL @ 4789.2ft (RKB - 16.2')						

## WELLBORE TARGET DETAILS

Name	TVD	+N/-S	+E/-W	Shape
460' Setback BHL	1.0	-4645.5	-1200.0	Polygon
460' Setback SHL	1.0	-300.0	-1200.0	Polygon
Sectionline	1.0	160.0	-1200.0	Polygon
SHL 160'FNL & 1322'FWL	1.0	0.0	0.0	Point
BHL 460'FSL & 825'FWL	6466.2	-4645.5	-492.1	Point



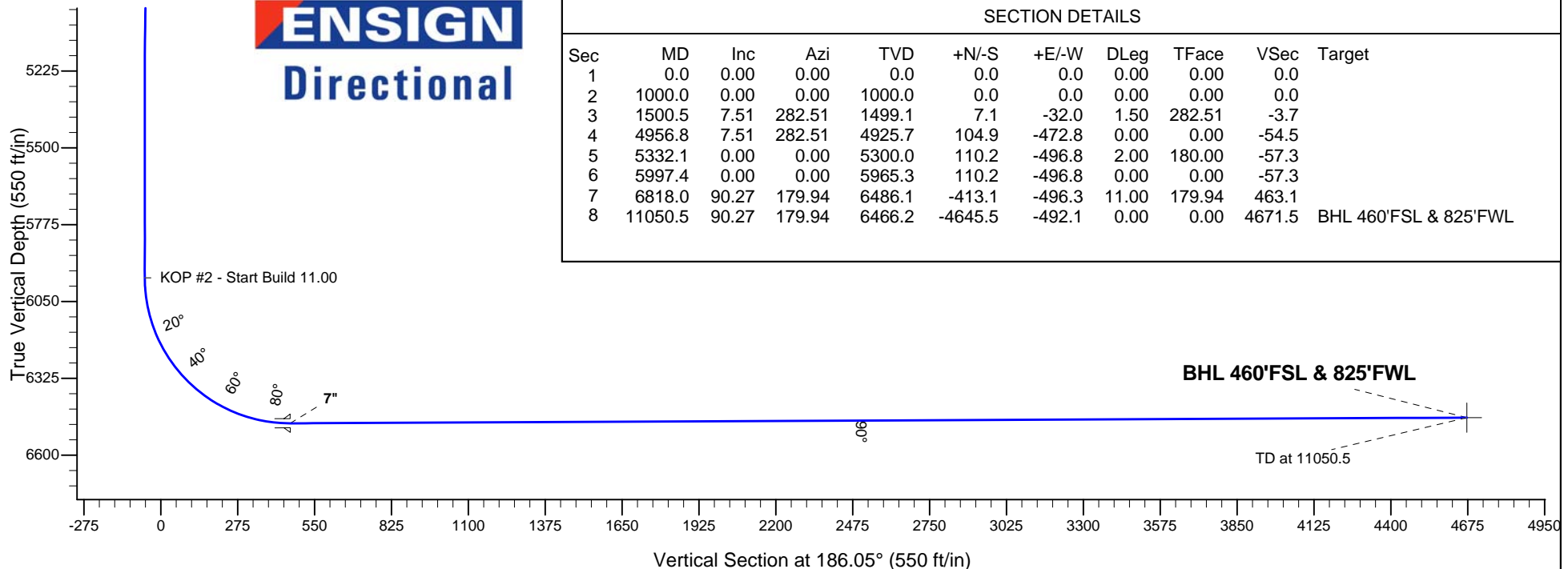
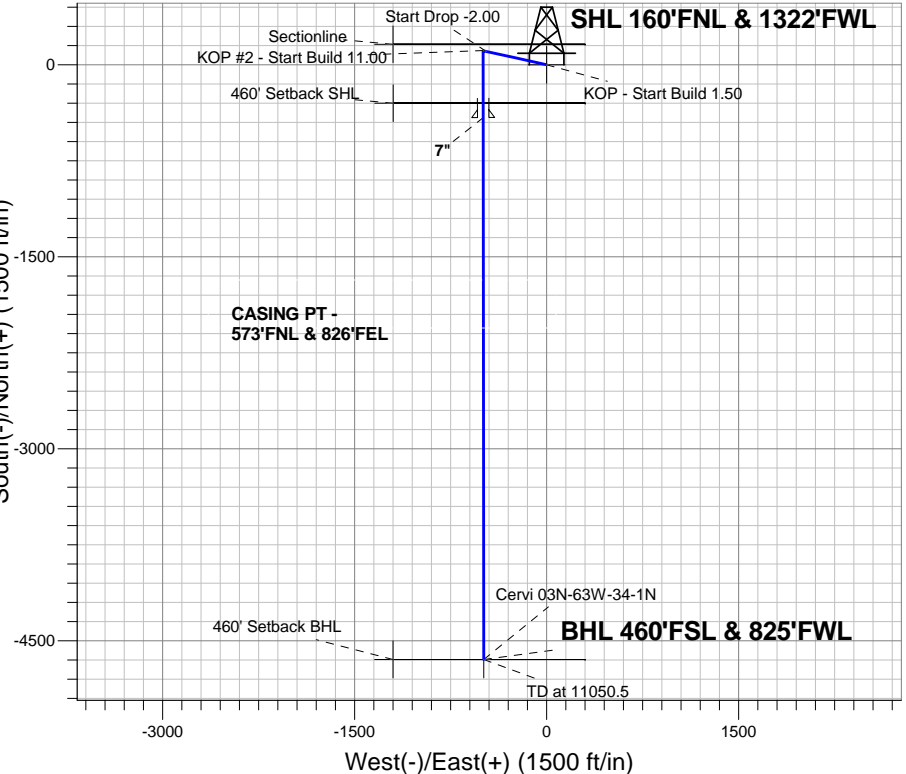
Azimuths to True North  
Magnetic North: 8.19°  
Magnetic Field  
Strength: 52682.3snT  
Dip Angle: 66.81°  
Date: 12/31/2014  
Model: IGRF2010

Cervi 03N-63W-34-1N Sec.34-T3N-R63W  
Cervi 03N-63W-34-1N  
Plan #3 (3-26-15)

## ANNOTATIONS

TVD	MD	Annotation
1000.0	1000.0	KOP - Start Build 1.50
4925.7	4956.8	Start Drop -2.00
5965.3	5997.4	KOP #2 - Start Build 11.00
6466.2	11050.5	TD at 11050.5

South(-)/North(+) (1500 ft/in)



**ENSIGN**  
Directional

## SECTION DETAILS

Sec	MD	Inc	Azi	TVD	+N/-S	+E/-W	DLeg	TFace	VSec	Target
1	0.0	0.00	0.00	0.0	0.0	0.0	0.00	0.00	0.0	
2	1000.0	0.00	0.00	1000.0	0.0	0.0	0.00	0.00	0.0	
3	1500.5	7.51	282.51	1499.1	7.1	-32.0	1.50	282.51	-3.7	
4	4956.8	7.51	282.51	4925.7	104.9	-472.8	0.00	0.00	-54.5	
5	5332.1	0.00	0.00	5300.0	110.2	-496.8	2.00	180.00	-57.3	
6	5997.4	0.00	0.00	5965.3	110.2	-496.8	0.00	0.00	-57.3	
7	6818.0	90.27	179.94	6486.1	-413.1	-496.3	11.00	179.94	463.1	
8	11050.5	90.27	179.94	6466.2	-4645.5	-492.1	0.00	0.00	4671.5	BHL 460'FSL & 825'FWL



# **Verdad Oil & Gas Corporation**

**SEC.34-T3N-R63W**

**Cervi 03N-63W-34-1N Sec.34-T3N-R63W**

**Cervi 03N-63W-34-1N**

**Wellbore #1**

**Plan: Plan #3 (3-26-15)**

## **Standard Planning Report**

**26 March, 2015**

<b>Database:</b>	landmark	<b>Local Co-ordinate Reference:</b>	Well Cervi 03N-63W-34-1N
<b>Company:</b>	Verdad Oil & Gas Corporation	<b>TVD Reference:</b>	WELL @ 4789.2ft (RKB - 16.2')
<b>Project:</b>	SEC.34-T3N-R63W	<b>MD Reference:</b>	WELL @ 4789.2ft (RKB - 16.2')
<b>Site:</b>	Cervi 03N-63W-34-1N Sec.34-T3N-R63W	<b>North Reference:</b>	True
<b>Well:</b>	Cervi 03N-63W-34-1N	<b>Survey Calculation Method:</b>	Minimum Curvature
<b>Wellbore:</b>	Wellbore #1		
<b>Design:</b>	Plan #3 (3-26-15)		

<b>Project</b>	SEC.34-T3N-R63W, Weld County, Colorado		
<b>Map System:</b>	US State Plane 1983	<b>System Datum:</b>	Mean Sea Level
<b>Geo Datum:</b>	North American Datum 1983		Using Well Reference Point
<b>Map Zone:</b>	Colorado Northern Zone		Using geodetic scale factor

Site Cervi 03N-63W-34-1N Sec.34-T3N-R63W					
Site Position:		Northing:		1,313,385.94 ft	
From:	Lat/Long	Easting:		Longitude:	
				-104.428385	
Position Uncertainty:		Slot Radius:		Grid Convergence:	
0.0 ft		"		0.69 °	

Well	Cervi 03N-63W-34-1N					
Well Position	+N-S	0.0 ft	Northing:	1,313,385.92 ft	Latitude:	40.188675
	+E-W	0.0 ft	Easting:	3,299,378.92 ft	Longitude:	-104.428385
Position Uncertainty		0.0 ft	Wellhead Elevation:	ft	Ground Level:	4,773.0 ft

<b>Wellbore</b>	Wellbore #1				
<b>Magnetics</b>	<b>Model Name</b>	<b>Sample Date</b>	<b>Declination (°)</b>	<b>Dip Angle (°)</b>	<b>Field Strength (nT)</b>
	IGRF2010	12/31/2014	8.19	66.81	52,682

<b>Design</b>	Plan #3 (3-26-15)			
<b>Audit Notes:</b>				
<b>Version:</b>	<b>Phase:</b>	PROTOTYPE	<b>Tie On Depth:</b>	0.0
<b>Vertical Section:</b>	<b>Depth From (TVD) (ft)</b>	<b>+N/-S (ft)</b>	<b>+E/-W (ft)</b>	<b>Direction (°)</b>
	0.0	0.0	0.0	186.05

<b>Plan Sections</b>										
Measured Depth (ft)	Inclination (°)	Azimuth (°)	Vertical Depth (ft)	+N/-S (ft)	+E/-W (ft)	Dogleg Rate (°/100ft)	Build Rate (°/100ft)	Turn Rate (°/100ft)	TFO (°)	Target
0.0	0.00	0.00	0.0	0.0	0.0	0.00	0.00	0.00	0.00	
1,000.0	0.00	0.00	1,000.0	0.0	0.0	0.00	0.00	0.00	0.00	
1,500.5	7.51	282.51	1,499.1	7.1	-32.0	1.50	1.50	0.00	282.51	
4,956.8	7.51	282.51	4,925.7	104.9	-472.8	0.00	0.00	0.00	0.00	
5,332.1	0.00	0.00	5,300.0	110.2	-496.8	2.00	-2.00	0.00	180.00	
5,997.4	0.00	0.00	5,965.3	110.2	-496.8	0.00	0.00	0.00	0.00	
6,818.0	90.27	179.94	6,486.1	-413.1	-496.3	11.00	11.00	0.00	179.94	
11,050.5	90.27	179.94	6,466.2	-4,645.5	-492.1	0.00	0.00	0.00	0.00	BHL 460'FSL & 825

**Database:** landmark  
**Company:** Verdad Oil & Gas Corporation  
**Project:** SEC.34-T3N-R63W  
**Site:** Cervi 03N-63W-34-1N Sec.34-T3N-R63W  
**Well:** Cervi 03N-63W-34-1N  
**Wellbore:** Wellbore #1  
**Design:** Plan #3 (3-26-15)

**Local Co-ordinate Reference:** Well Cervi 03N-63W-34-1N  
**TVD Reference:** WELL @ 4789.2ft (RKB - 16.2')  
**MD Reference:** WELL @ 4789.2ft (RKB - 16.2')  
**North Reference:** True  
**Survey Calculation Method:** Minimum Curvature

Planned Survey									
Measured Depth (ft)	Inclination (°)	Azimuth (°)	Vertical Depth (ft)	+N/-S (ft)	+E/-W (ft)	Vertical Section (ft)	Dogleg Rate (°/100ft)	Build Rate (°/100ft)	Turn Rate (°/100ft)
0.0	0.00	0.00	0.0	0.0	0.0	0.0	0.00	0.00	0.00
100.0	0.00	0.00	100.0	0.0	0.0	0.0	0.00	0.00	0.00
200.0	0.00	0.00	200.0	0.0	0.0	0.0	0.00	0.00	0.00
300.0	0.00	0.00	300.0	0.0	0.0	0.0	0.00	0.00	0.00
400.0	0.00	0.00	400.0	0.0	0.0	0.0	0.00	0.00	0.00
500.0	0.00	0.00	500.0	0.0	0.0	0.0	0.00	0.00	0.00
600.0	0.00	0.00	600.0	0.0	0.0	0.0	0.00	0.00	0.00
700.0	0.00	0.00	700.0	0.0	0.0	0.0	0.00	0.00	0.00
800.0	0.00	0.00	800.0	0.0	0.0	0.0	0.00	0.00	0.00
900.0	0.00	0.00	900.0	0.0	0.0	0.0	0.00	0.00	0.00
1,000.0	0.00	0.00	1,000.0	0.0	0.0	0.0	0.00	0.00	0.00
KOP - Start Build 1.50									
1,100.0	1.50	282.51	1,100.0	0.3	-1.3	-0.1	1.50	1.50	0.00
1,200.0	3.00	282.51	1,199.9	1.1	-5.1	-0.6	1.50	1.50	0.00
1,300.0	4.50	282.51	1,299.7	2.5	-11.5	-1.3	1.50	1.50	0.00
1,400.0	6.00	282.51	1,399.3	4.5	-20.4	-2.4	1.50	1.50	0.00
1,500.0	7.50	282.51	1,498.6	7.1	-31.9	-3.7	1.50	1.50	0.00
1,500.5	7.51	282.51	1,499.1	7.1	-32.0	-3.7	1.50	1.50	0.00
1,600.0	7.51	282.51	1,597.7	9.9	-44.7	-5.1	0.00	0.00	0.00
1,700.0	7.51	282.51	1,696.9	12.7	-57.4	-6.6	0.00	0.00	0.00
1,800.0	7.51	282.51	1,796.0	15.6	-70.2	-8.1	0.00	0.00	0.00
1,900.0	7.51	282.51	1,895.1	18.4	-82.9	-9.6	0.00	0.00	0.00
2,000.0	7.51	282.51	1,994.3	21.2	-95.7	-11.0	0.00	0.00	0.00
2,100.0	7.51	282.51	2,093.4	24.0	-108.4	-12.5	0.00	0.00	0.00
2,200.0	7.51	282.51	2,192.6	26.9	-121.2	-14.0	0.00	0.00	0.00
2,300.0	7.51	282.51	2,291.7	29.7	-133.9	-15.4	0.00	0.00	0.00
2,400.0	7.51	282.51	2,390.9	32.5	-146.7	-16.9	0.00	0.00	0.00
2,500.0	7.51	282.51	2,490.0	35.4	-159.5	-18.4	0.00	0.00	0.00
2,600.0	7.51	282.51	2,589.1	38.2	-172.2	-19.8	0.00	0.00	0.00
2,700.0	7.51	282.51	2,688.3	41.0	-185.0	-21.3	0.00	0.00	0.00
2,800.0	7.51	282.51	2,787.4	43.9	-197.7	-22.8	0.00	0.00	0.00
2,900.0	7.51	282.51	2,886.6	46.7	-210.5	-24.3	0.00	0.00	0.00
3,000.0	7.51	282.51	2,985.7	49.5	-223.2	-25.7	0.00	0.00	0.00
3,100.0	7.51	282.51	3,084.9	52.3	-236.0	-27.2	0.00	0.00	0.00
3,200.0	7.51	282.51	3,184.0	55.2	-248.7	-28.7	0.00	0.00	0.00
3,300.0	7.51	282.51	3,283.1	58.0	-261.5	-30.1	0.00	0.00	0.00
3,400.0	7.51	282.51	3,382.3	60.8	-274.3	-31.6	0.00	0.00	0.00
3,500.0	7.51	282.51	3,481.4	63.7	-287.0	-33.1	0.00	0.00	0.00
3,600.0	7.51	282.51	3,580.6	66.5	-299.8	-34.5	0.00	0.00	0.00
3,700.0	7.51	282.51	3,679.7	69.3	-312.5	-36.0	0.00	0.00	0.00
3,800.0	7.51	282.51	3,778.9	72.2	-325.3	-37.5	0.00	0.00	0.00
3,900.0	7.51	282.51	3,878.0	75.0	-338.0	-39.0	0.00	0.00	0.00
4,000.0	7.51	282.51	3,977.1	77.8	-350.8	-40.4	0.00	0.00	0.00
4,100.0	7.51	282.51	4,076.3	80.6	-363.5	-41.9	0.00	0.00	0.00
4,200.0	7.51	282.51	4,175.4	83.5	-376.3	-43.4	0.00	0.00	0.00
4,300.0	7.51	282.51	4,274.6	86.3	-389.1	-44.8	0.00	0.00	0.00
4,400.0	7.51	282.51	4,373.7	89.1	-401.8	-46.3	0.00	0.00	0.00
4,500.0	7.51	282.51	4,472.9	92.0	-414.6	-47.8	0.00	0.00	0.00
4,600.0	7.51	282.51	4,572.0	94.8	-427.3	-49.2	0.00	0.00	0.00
4,700.0	7.51	282.51	4,671.1	97.6	-440.1	-50.7	0.00	0.00	0.00
4,800.0	7.51	282.51	4,770.3	100.4	-452.8	-52.2	0.00	0.00	0.00
4,900.0	7.51	282.51	4,869.4	103.3	-465.6	-53.7	0.00	0.00	0.00
4,956.8	7.51	282.51	4,925.7	104.9	-472.8	-54.5	0.00	0.00	0.00
Start Drop -2.00									

**Database:** landmark  
**Company:** Verdad Oil & Gas Corporation  
**Project:** SEC.34-T3N-R63W  
**Site:** Cervi 03N-63W-34-1N Sec.34-T3N-R63W  
**Well:** Cervi 03N-63W-34-1N  
**Wellbore:** Wellbore #1  
**Design:** Plan #3 (3-26-15)

**Local Co-ordinate Reference:** Well Cervi 03N-63W-34-1N  
**TVD Reference:** WELL @ 4789.2ft (RKB - 16.2')  
**MD Reference:** WELL @ 4789.2ft (RKB - 16.2')  
**North Reference:** True  
**Survey Calculation Method:** Minimum Curvature

Planned Survey									
Measured Depth (ft)	Inclination (°)	Azimuth (°)	Vertical Depth (ft)	+N/-S (ft)	+E/-W (ft)	Vertical Section (ft)	Dogleg Rate (°/100ft)	Build Rate (°/100ft)	Turn Rate (°/100ft)
5,000.0	6.64	282.51	4,968.6	106.0	-478.0	-55.1	2.00	-2.00	0.00
5,100.0	4.64	282.51	5,068.1	108.2	-487.6	-56.2	2.00	-2.00	0.00
5,200.0	2.64	282.51	5,167.9	109.5	-493.8	-56.9	2.00	-2.00	0.00
5,300.0	0.64	282.51	5,267.9	110.2	-496.6	-57.2	2.00	-2.00	0.00
5,332.1	0.00	0.00	5,300.0	110.2	-496.8	-57.3	2.00	-2.00	0.00
5,400.0	0.00	0.00	5,367.9	110.2	-496.8	-57.3	0.00	0.00	0.00
5,500.0	0.00	0.00	5,467.9	110.2	-496.8	-57.3	0.00	0.00	0.00
5,600.0	0.00	0.00	5,567.9	110.2	-496.8	-57.3	0.00	0.00	0.00
5,700.0	0.00	0.00	5,667.9	110.2	-496.8	-57.3	0.00	0.00	0.00
5,800.0	0.00	0.00	5,767.9	110.2	-496.8	-57.3	0.00	0.00	0.00
5,900.0	0.00	0.00	5,867.9	110.2	-496.8	-57.3	0.00	0.00	0.00
5,997.4	0.00	0.00	5,965.3	110.2	-496.8	-57.3	0.00	0.00	0.00
<b>KOP #2 - Start Build 11.00</b>									
6,000.0	0.28	179.94	5,967.9	110.2	-496.8	-57.3	10.96	10.96	0.00
6,100.0	11.28	179.94	6,067.2	100.1	-496.8	-47.2	11.00	11.00	0.00
6,200.0	22.28	179.94	6,162.8	71.3	-496.8	-18.6	11.00	11.00	0.00
6,300.0	33.28	179.94	6,251.1	24.8	-496.7	27.7	11.00	11.00	0.00
6,400.0	44.28	179.94	6,329.0	-37.8	-496.7	89.9	11.00	11.00	0.00
6,500.0	55.28	179.94	6,393.4	-114.0	-496.6	165.7	11.00	11.00	0.00
6,600.0	66.28	179.94	6,442.2	-201.2	-496.5	252.4	11.00	11.00	0.00
6,700.0	77.28	179.94	6,473.4	-296.0	-496.4	346.7	11.00	11.00	0.00
6,800.0	88.28	179.94	6,485.9	-395.1	-496.3	445.2	11.00	11.00	0.00
6,818.0	90.26	179.94	6,486.1	-413.1	-496.3	463.1	11.00	11.00	0.00
<b>7"</b>									
6,900.0	90.27	179.94	6,485.8	-495.1	-496.2	544.6	0.01	0.01	0.00
7,000.0	90.27	179.94	6,485.3	-595.1	-496.1	644.0	0.00	0.00	0.00
7,100.0	90.27	179.94	6,484.8	-695.1	-496.0	743.5	0.00	0.00	0.00
7,200.0	90.27	179.94	6,484.3	-795.1	-495.9	842.9	0.00	0.00	0.00
7,300.0	90.27	179.94	6,483.9	-895.1	-495.8	942.3	0.00	0.00	0.00
7,400.0	90.27	179.94	6,483.4	-995.1	-495.7	1,041.7	0.00	0.00	0.00
7,500.0	90.27	179.94	6,482.9	-1,095.1	-495.6	1,141.2	0.00	0.00	0.00
7,600.0	90.27	179.94	6,482.5	-1,195.1	-495.5	1,240.6	0.00	0.00	0.00
7,700.0	90.27	179.94	6,482.0	-1,295.1	-495.4	1,340.0	0.00	0.00	0.00
7,800.0	90.27	179.94	6,481.5	-1,395.1	-495.3	1,439.5	0.00	0.00	0.00
7,900.0	90.27	179.94	6,481.0	-1,495.1	-495.2	1,538.9	0.00	0.00	0.00
8,000.0	90.27	179.94	6,480.6	-1,595.1	-495.1	1,638.3	0.00	0.00	0.00
8,100.0	90.27	179.94	6,480.1	-1,695.1	-495.0	1,737.8	0.00	0.00	0.00
8,200.0	90.27	179.94	6,479.6	-1,795.1	-494.9	1,837.2	0.00	0.00	0.00
8,300.0	90.27	179.94	6,479.2	-1,895.1	-494.8	1,936.6	0.00	0.00	0.00
8,400.0	90.27	179.94	6,478.7	-1,995.1	-494.7	2,036.1	0.00	0.00	0.00
8,500.0	90.27	179.94	6,478.2	-2,095.1	-494.6	2,135.5	0.00	0.00	0.00
8,600.0	90.27	179.94	6,477.7	-2,195.1	-494.5	2,234.9	0.00	0.00	0.00
8,700.0	90.27	179.94	6,477.3	-2,295.1	-494.4	2,334.4	0.00	0.00	0.00
8,800.0	90.27	179.94	6,476.8	-2,395.1	-494.3	2,433.8	0.00	0.00	0.00
8,900.0	90.27	179.94	6,476.3	-2,495.1	-494.2	2,533.2	0.00	0.00	0.00
9,000.0	90.27	179.94	6,475.9	-2,595.1	-494.1	2,632.7	0.00	0.00	0.00
9,100.0	90.27	179.94	6,475.4	-2,695.1	-494.0	2,732.1	0.00	0.00	0.00
9,200.0	90.27	179.94	6,474.9	-2,795.1	-493.9	2,831.5	0.00	0.00	0.00
9,300.0	90.27	179.94	6,474.4	-2,895.0	-493.8	2,931.0	0.00	0.00	0.00
9,400.0	90.27	179.94	6,474.0	-2,995.0	-493.7	3,030.4	0.00	0.00	0.00
9,500.0	90.27	179.94	6,473.5	-3,095.0	-493.6	3,129.8	0.00	0.00	0.00
9,600.0	90.27	179.94	6,473.0	-3,195.0	-493.5	3,229.3	0.00	0.00	0.00
9,700.0	90.27	179.94	6,472.6	-3,295.0	-493.4	3,328.7	0.00	0.00	0.00
9,800.0	90.27	179.94	6,472.1	-3,395.0	-493.3	3,428.1	0.00	0.00	0.00

**Database:** landmark  
**Company:** Verdad Oil & Gas Corporation  
**Project:** SEC.34-T3N-R63W  
**Site:** Cervi 03N-63W-34-1N Sec.34-T3N-R63W  
**Well:** Cervi 03N-63W-34-1N  
**Wellbore:** Wellbore #1  
**Design:** Plan #3 (3-26-15)

**Local Co-ordinate Reference:** Well Cervi 03N-63W-34-1N  
**TVD Reference:** WELL @ 4789.2ft (RKB - 16.2')  
**MD Reference:** WELL @ 4789.2ft (RKB - 16.2')  
**North Reference:** True  
**Survey Calculation Method:** Minimum Curvature

**Planned Survey**

Measured Depth (ft)	Inclination (°)	Azimuth (°)	Vertical Depth (ft)	+N/-S (ft)	+E/-W (ft)	Vertical Section (ft)	Dogleg Rate (°/100ft)	Build Rate (°/100ft)	Turn Rate (°/100ft)
9,900.0	90.27	179.94	6,471.6	-3,495.0	-493.2	3,527.6	0.00	0.00	0.00
10,000.0	90.27	179.94	6,471.2	-3,595.0	-493.1	3,627.0	0.00	0.00	0.00
10,100.0	90.27	179.94	6,470.7	-3,695.0	-493.0	3,726.4	0.00	0.00	0.00
10,200.0	90.27	179.94	6,470.2	-3,795.0	-492.9	3,825.8	0.00	0.00	0.00
10,300.0	90.27	179.94	6,469.7	-3,895.0	-492.8	3,925.3	0.00	0.00	0.00
10,400.0	90.27	179.94	6,469.3	-3,995.0	-492.7	4,024.7	0.00	0.00	0.00
10,500.0	90.27	179.94	6,468.8	-4,095.0	-492.6	4,124.1	0.00	0.00	0.00
10,600.0	90.27	179.94	6,468.3	-4,195.0	-492.5	4,223.6	0.00	0.00	0.00
10,700.0	90.27	179.94	6,467.9	-4,295.0	-492.4	4,323.0	0.00	0.00	0.00
10,800.0	90.27	179.94	6,467.4	-4,395.0	-492.3	4,422.4	0.00	0.00	0.00
10,900.0	90.27	179.94	6,466.9	-4,495.0	-492.2	4,521.9	0.00	0.00	0.00
11,000.0	90.27	179.94	6,466.4	-4,595.0	-492.1	4,621.3	0.00	0.00	0.00
11,050.5	90.27	179.94	6,466.2	-4,645.5	-492.1	4,671.5	0.00	0.00	0.00

**Targets**

Target Name	Dip Angle (°)	Dip Dir. (°)	TVD (ft)	+N/-S (ft)	+E/-W (ft)	Northing (ft)	Easting (ft)	Latitude	Longitude
- hit/miss target									
- Shape									
460' Setback SHL	0.00	0.00	1.0	-300.0	-1,200.0	1,313,071.46	3,298,182.68	40.187851	-104.432680
- plan misses by 1236.9ft at 1.0ft MD (1.0 TVD, 0.0 N, 0.0 E)									
- Polygon									
Point 1			1.0	0.0	0.0	1,313,071.46	3,298,182.68		
Point 2			1.0	0.0	1,500.0	1,313,089.59	3,299,682.51		
SHL 160'FNL & 1322'	0.00	0.00	1.0	0.0	0.0	1,313,385.94	3,299,378.92	40.188675	-104.428385
- plan hits target									
- Point									
460' Setback BHL	0.00	0.00	1.0	-4,645.5	-1,200.0	1,308,726.47	3,298,235.19	40.175923	-104.432679
- plan misses by 4798.0ft at 1.0ft MD (1.0 TVD, 0.0 N, 0.0 E)									
- Polygon									
Point 1			1.0	0.0	0.0	1,308,726.47	3,298,235.19		
Point 2			1.0	0.0	1,500.0	1,308,744.60	3,299,735.02		
Sectionline	0.00	0.00	1.0	160.0	-1,200.0	1,313,531.41	3,298,177.12	40.189114	-104.432680
- plan misses by 1210.6ft at 1.0ft MD (1.0 TVD, 0.0 N, 0.0 E)									
- Polygon									
Point 1			1.0	0.0	0.0	1,313,531.41	3,298,177.12		
Point 2			1.0	0.0	1,500.0	1,313,549.54	3,299,676.95		
BHL 460'FSL & 825'F	0.00	0.00	6,466.2	-4,645.5	-492.1	1,308,735.01	3,298,943.01	40.175923	-104.430146
- plan hits target									
- Point									

**Casing Points**

Measured Depth (ft)	Vertical Depth (ft)	Name	Casing Diameter (")	Hole Diameter (")
6,818.0	6,486.1	7"	7	7-1/2

<b>Database:</b>	landmark	<b>Local Co-ordinate Reference:</b>	Well Cervi 03N-63W-34-1N
<b>Company:</b>	Verdad Oil & Gas Corporation	<b>TVD Reference:</b>	WELL @ 4789.2ft (RKB - 16.2')
<b>Project:</b>	SEC.34-T3N-R63W	<b>MD Reference:</b>	WELL @ 4789.2ft (RKB - 16.2')
<b>Site:</b>	Cervi 03N-63W-34-1N Sec.34-T3N-R63W	<b>North Reference:</b>	True
<b>Well:</b>	Cervi 03N-63W-34-1N	<b>Survey Calculation Method:</b>	Minimum Curvature
<b>Wellbore:</b>	Wellbore #1		
<b>Design:</b>	Plan #3 (3-26-15)		

Plan Annotations				
Measured Depth (ft)	Vertical Depth (ft)	Local Coordinates		Comment
		+N/-S (ft)	+E/-W (ft)	
1,000.0	1,000.0	0.0	0.0	KOP - Start Build 1.50
4,956.8	4,925.7	7.1	-32.0	Start Drop -2.00
5,997.4	5,965.3	104.9	-472.8	KOP #2 - Start Build 11.00
11,050.5	6,466.2	110.2	-496.8	TD at 11050.5