

1801 Broadway
Suite 500
Denver, Colorado 80202



Allison Linz
Regulatory Technician
Tel: 303.398.0355
E-mail: alinz@gwogco.com

April 1, 2015

Colorado Oil and Gas Conservation Commission
1120 Lincoln Street, Suite 801
Denver, Colorado 80203

RE: **Proposed Wellbore Spacing Unit**
Chandler Farms HD 20-372HN

Niobrara New Drill
Township 4 North, Range 67 West, 6th P.M.
SWSE Section 19
Weld County, Colorado

Dear Director:

Great Western Operating Company, LLC is planning to drill the above captioned well in accordance with the provisions of COGCC Rule 318A.e.

Great Western proposed wellbore spacing unit consists of:

- **S2SE Section 19 S2SW Section 20 N2NE Section 30 N2NW Section 29**
- **320 Acres**

The 30 day notification time period has passed and we have not received any objections to such well locations or proposed spacing unit, therefore Great Western hereby requests the Director to approve the above mentioned well. Great Western Operating Company, LLC respectfully requests that the COGCC review the enclosed map illustrating the proposed wellbore spacing unit.

Respectfully,

Allison Linz

Allison Linz
Regulatory Technician
Great Western Operating Company, LLC

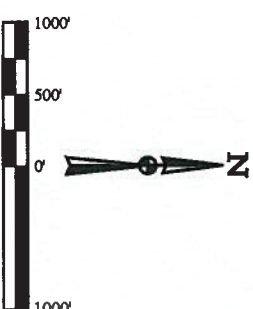
T4N, R67W, 6th P.M.

GREAT WESTERN OIL & GAS COMPANY

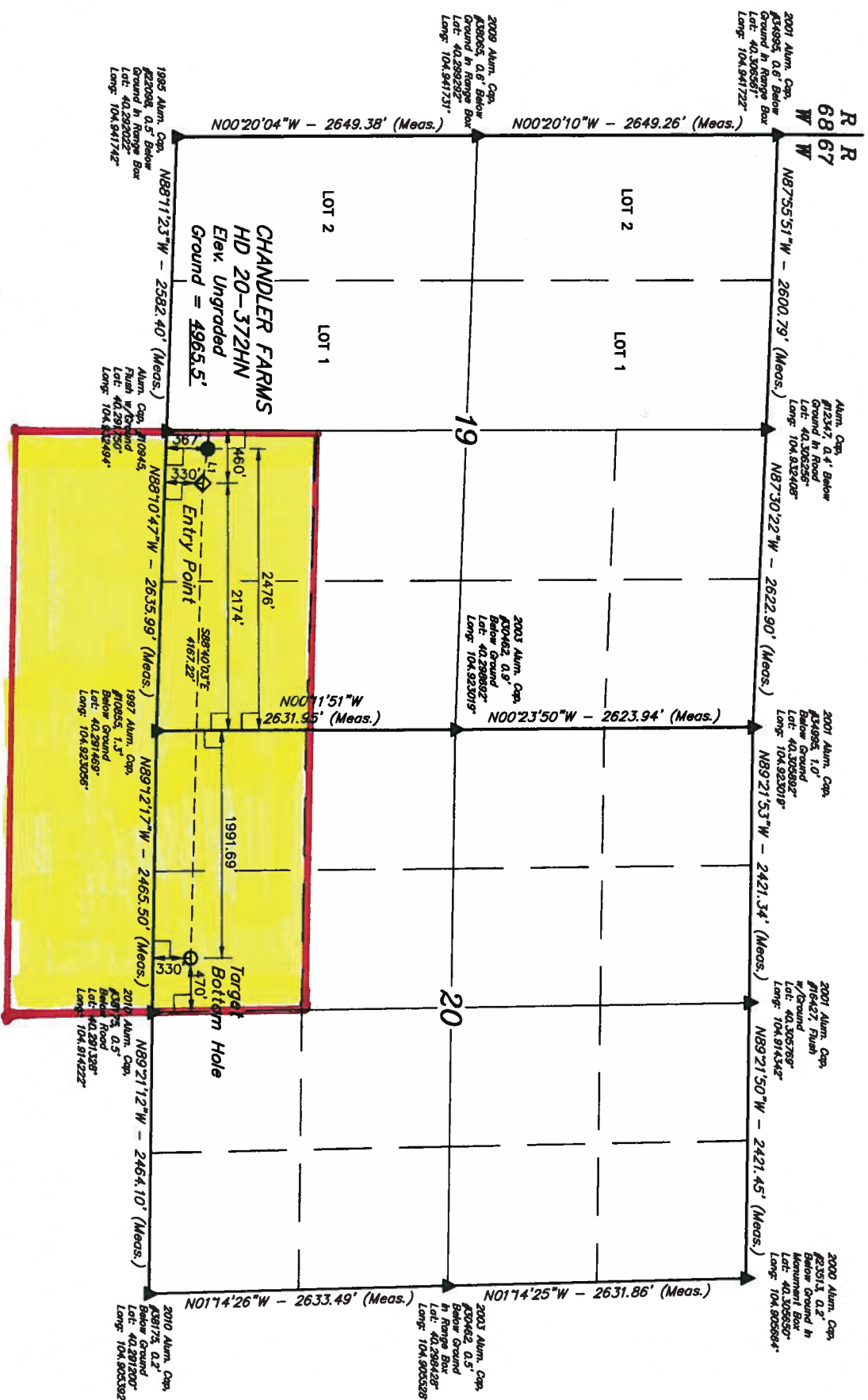
CHANDLER FARMS HD 20-372HN
SW 1/4 SE 1/4, SECTION 19, T4N, R67W, 6th P.M.
WELD COUNTY, COLORADO

BASIS OF BEARINGS
BASIS OF BEARINGS IS A G.P.S. OBSERVATION
BASIS OF ELEVATION

USGS COOPERATIVE BASE NETWORK CONTROL STATION
DESIGNATION "VERMILYEA". NGS DATA SHEET LISTS THE
NAVD 88 ELEVATION AS BEING 5026 FEET.



LINE TABLE		
LINE	DIRECTION	LENGTH
L1	S81°18'22"E	305.41'



THIS IS TO CERTIFY THAT THE ABOVE IS A TRUE AND CORRECT COPY OF THE ORIGINAL SURVEY MAP AND THAT THE SAME ARE TRUE AND CORRECT TO THE BEST OF OUR KNOWLEDGE AND BELIEF.



U.E.L.S. LLC
Corporate Office * 85 South 200 East
Vernal, UT 84078 * (435) 785-1017



SURVEYED BY: GREG WEIMER, C.J.		DATE: 09-03-14
DRAWN BY: J.W.		DATE DRAWN: 09-16-14
SCALE: 1" = 100'		REVISED: 12-16-14
WELL LOCATION PLAT		

PDOP = 1.6

LEGEND:

- 90° SYMBOL
- PROPOSED WELHEAD
- ENTRY POINT
- TARGET BOTTOM HOLE
- SECTION CORNERS LOCATED