

T4N, R67W, 6th P.M.

GREAT WESTERN OIL & GAS COMPANY

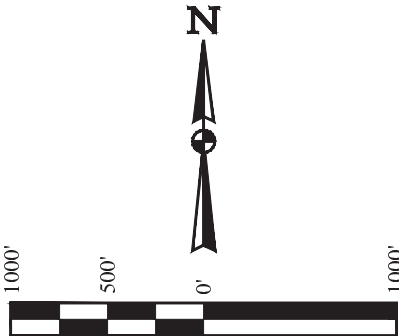
CHANDLER FARMS HD 20-372HN
SW 1/4 SE 1/4, SECTION 19, T4N, R67W, 6th P.M.
WELD COUNTY, COLORADO

BASIS OF BEARINGS

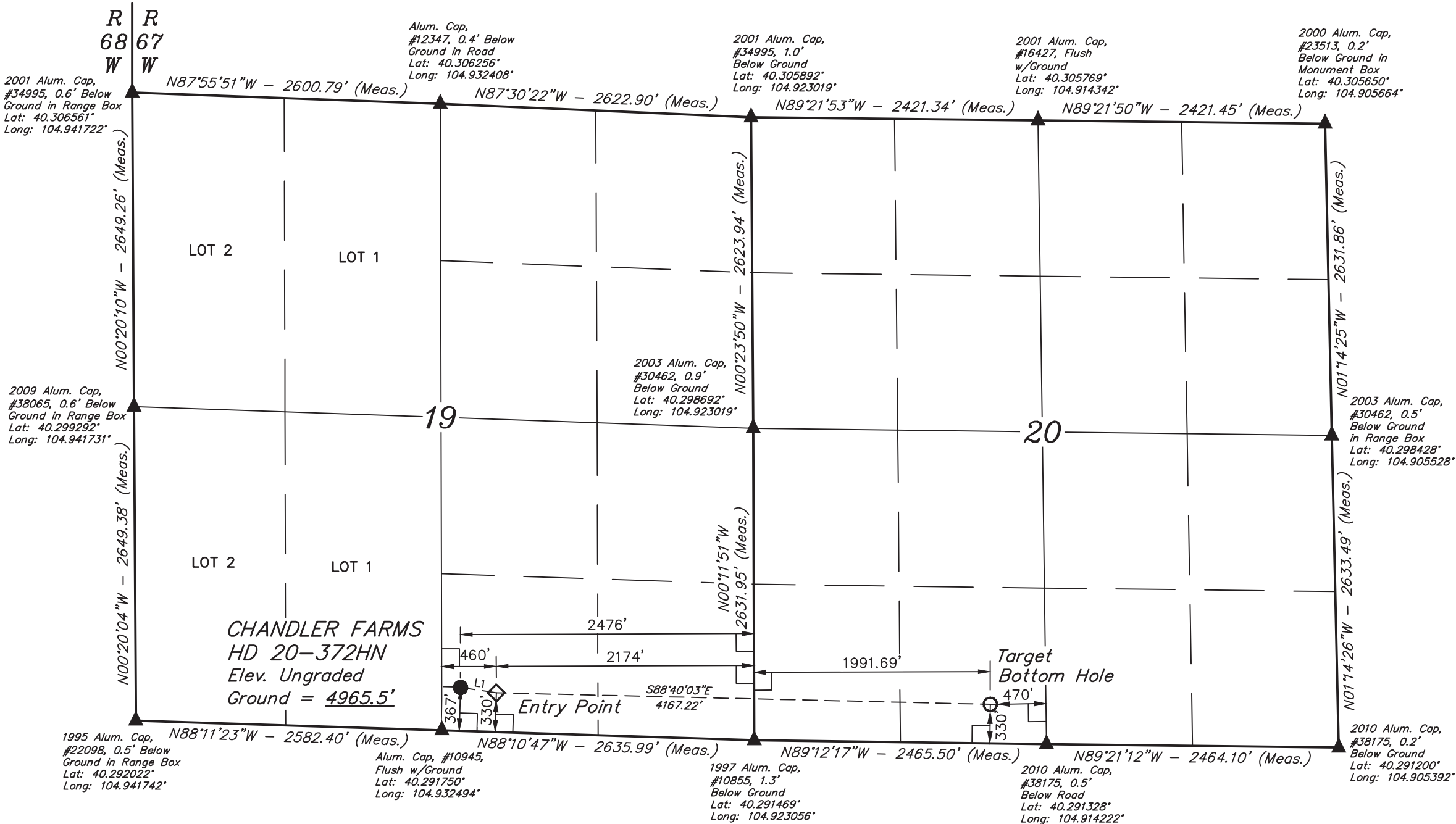
BASIS OF BEARINGS IS A G.P.S. OBSERVATION

BASIS OF ELEVATION

USGS COOPERATIVE BASE NETWORK CONTROL STATION,
DESIGNATION "VERMILYEA". NGS DATA SHEET LISTS THE
NAVD 88 ELEVATION AS BEING 5026 FEET.



LINE TABLE		
LINE	DIRECTION	LENGTH
L1	S81°18'22"E	305.41'



LEGEND:

- 90° SYMBOL
- PROPOSED WELLHEAD.
- ENTRY POINT.
- TARGET BOTTOM HOLE.
- SECTION CORNERS LOCATED.

PDOP = 1.6

NAD 83 (TARGET BOTTOM HOLE)	NAD 83 (ENTRY POINT)	NAD 83 (SURFACE LOCATION)
LATITUDE = 40°17'32.13" (40.292258)	LATITUDE = 40°17'33.38" (40.292606)	LATITUDE = 40°17'33.86" (40.292739)
LONGITUDE = 104°54'57.29" (104.915914)	LONGITUDE = 104°55'51.03" (104.930842)	LONGITUDE = 104°55'54.92" (104.931922)
NAD 27 (TARGET BOTTOM HOLE)	NAD 27 (ENTRY POINT)	NAD 27 (SURFACE LOCATION)
LATITUDE = 40°17'32.19" (40.292275)	LATITUDE = 40°17'33.44" (40.292622)	LATITUDE = 40°17'33.92" (40.292756)
LONGITUDE = 104°54'55.38" (104.915383)	LONGITUDE = 104°55'49.11" (104.930308)	LONGITUDE = 104°55'53.00" (104.931389)

CERTIFICATE

THIS IS TO CERTIFY THAT THE ABOVE PLAT WAS PREPARED FROM FIELD
NOTES OF ACTUAL SURVEYS MADE BY ME OR UNDER MY SUPERVISION
AND THAT THE SAME ARE TRUE AND CORRECT TO THE BEST OF MY
KNOWLEDGE AND BELIEF.

REGISTERED LAND SURVEYOR
REGISTRATION NO. 28285
STATE OF COLORADO



UELS, LLC
Corporate Office * 85 South 200 East
Vernal, UT 84078 * (435) 789-1017

SURVEYED BY: GREG WEIMER, C.J.	DATE: 09-03-14
DRAWN BY: J.W.	DATE DRAWN: 09-16-14
SCALE: 1" = 1000'	REVISED: 12-16-14
WELL LOCATION PLAT	