

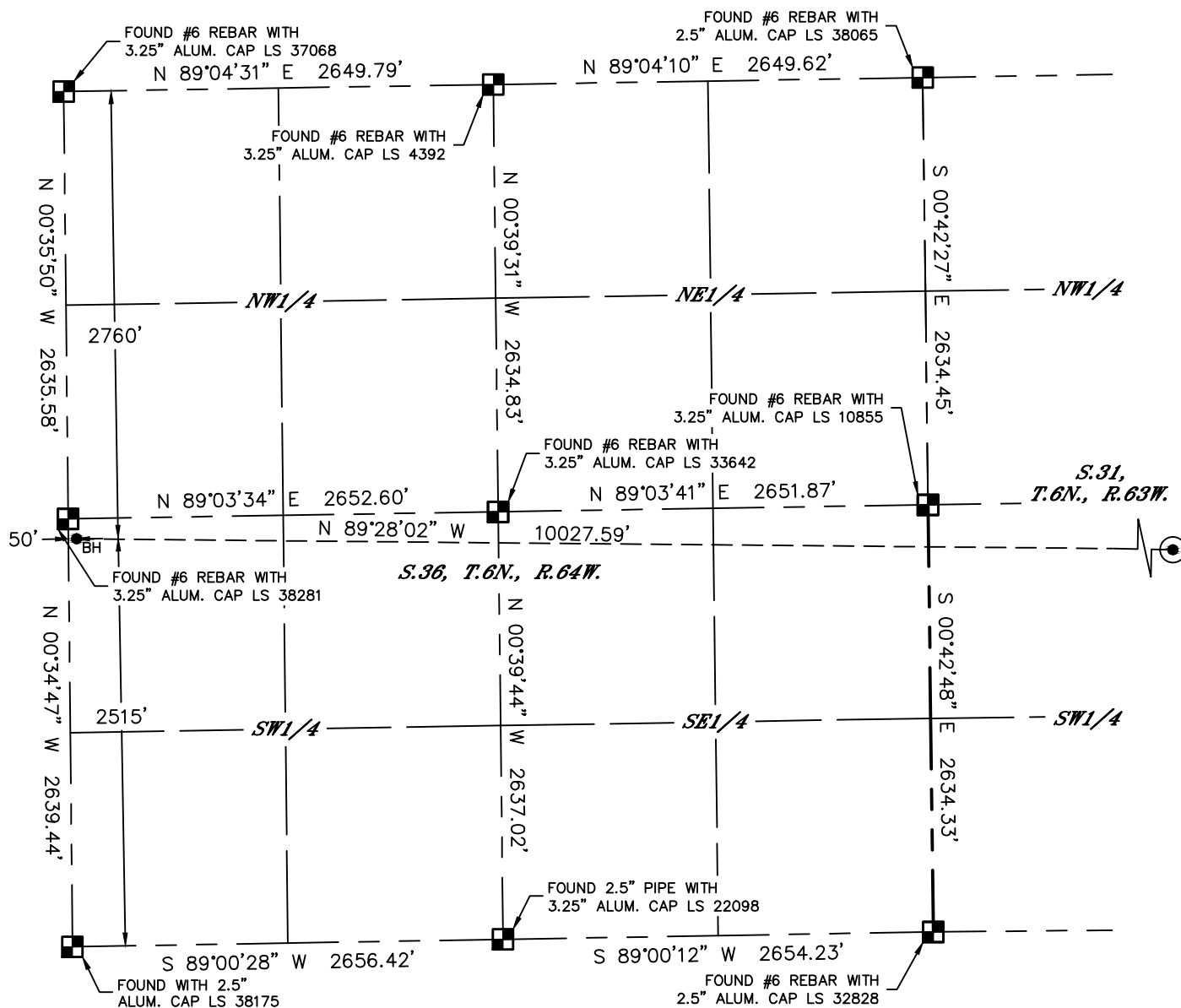


Lat40°, Inc. 6250 W. 10th Street, Unit 2, Greeley, CO 970-515-5294








WELL LOCATION CERTIFICATE

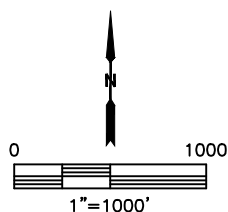
WELLS RANCH STATE A36-649

SECTION: 31
TOWNSHIP: 6N
RANGE: 63W
6TH. P.M.
WELD COUNTY, CO



LEGEND

-  = ALIQUOT MONUMENT AS DESCRIBED
 = CALCULATED POSITION
 = SURFACE HOLE LOCATION (SHL)
 = ENTRY POINT LOCATION (EP)
 = BOTTOM HOLE LOCATION (BHL)
 = EXISTING WELL
 = ABANDONED WELL



SHEET 2 OF 8

Kyle E. Rutz—On behalf of Lot40, Inc.
Colorado Licensed Professional Land Surveyor No. 38307
DATE: 3/9/2015
PROJECT#: 2014164