



Denver Remote Management Center
13949 West Colfax Ave, Suite 205
Lakewood, Colorado 80401

Phone 303.325.3289

WWW.HZMUD.COM

Customer Information

Operator: PDC Energy Inc
1775 Sherman Street
Suite 3000
Denver, CO 80203

Geologist: Nathan Marolf
PDC Energy, Inc.

Remote Logging Details

Logger: HORIZON DENVER REMOTE
MANAGEMENT CENTER

Log Interval: 6,094' MD to 7,340' MD

Start Date: December 11, 2014

Release Date: December 18, 2014

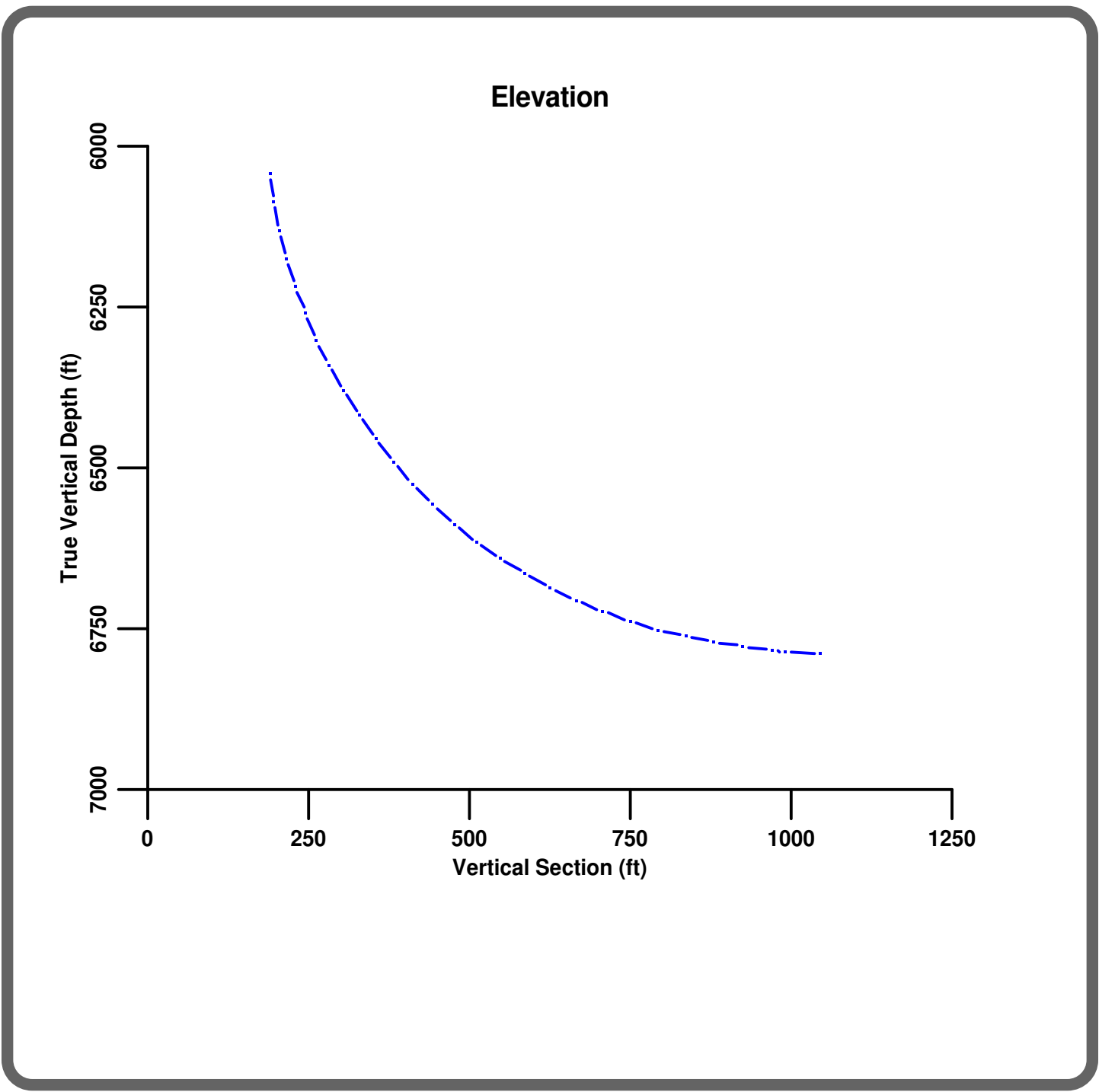
Well Information

Well Name: Chesnut 27K-421

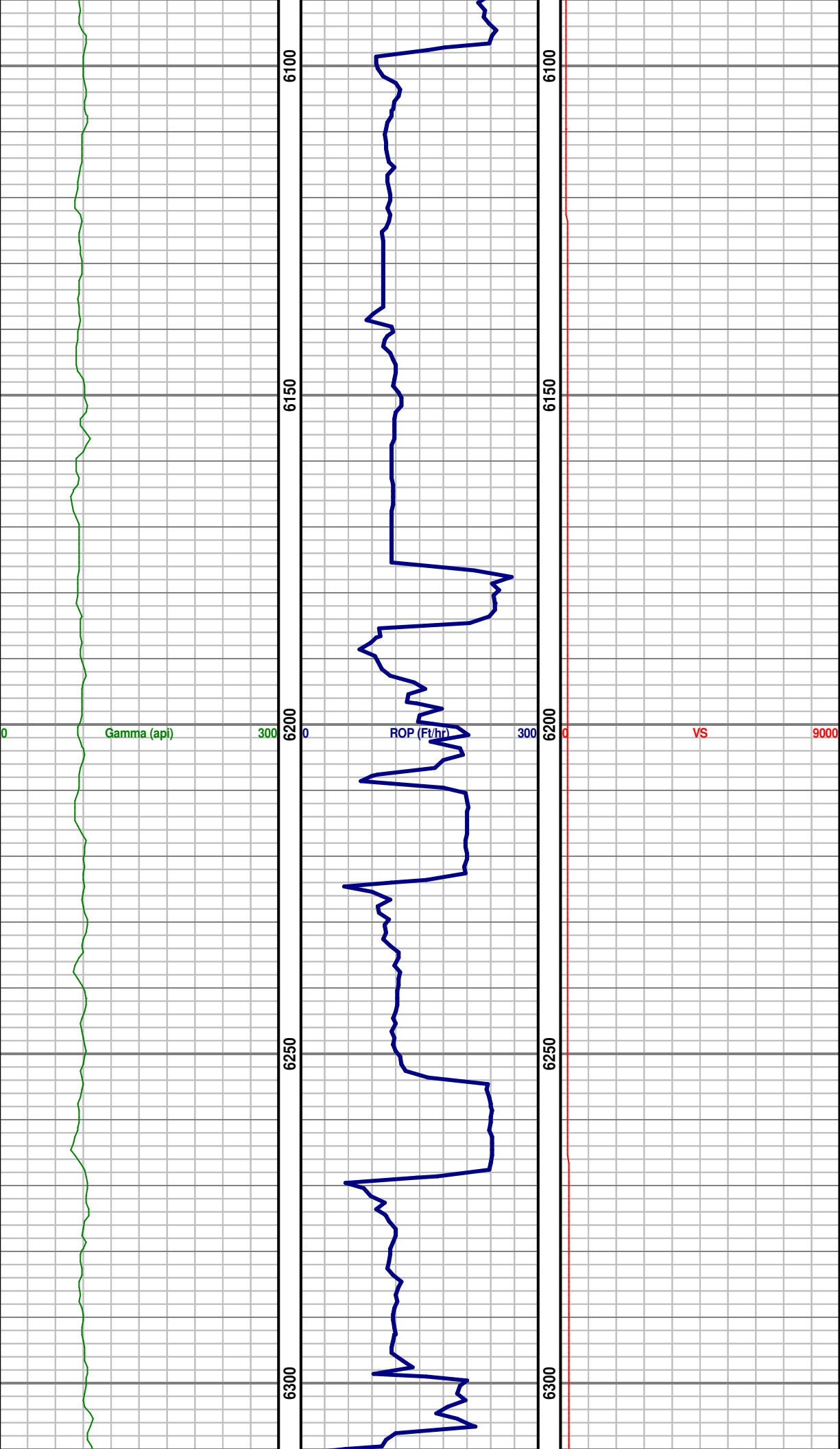
Location: NWSW SEC 27, 5N, 64W, 6TH
2,334' FNL x 1,118' FWL

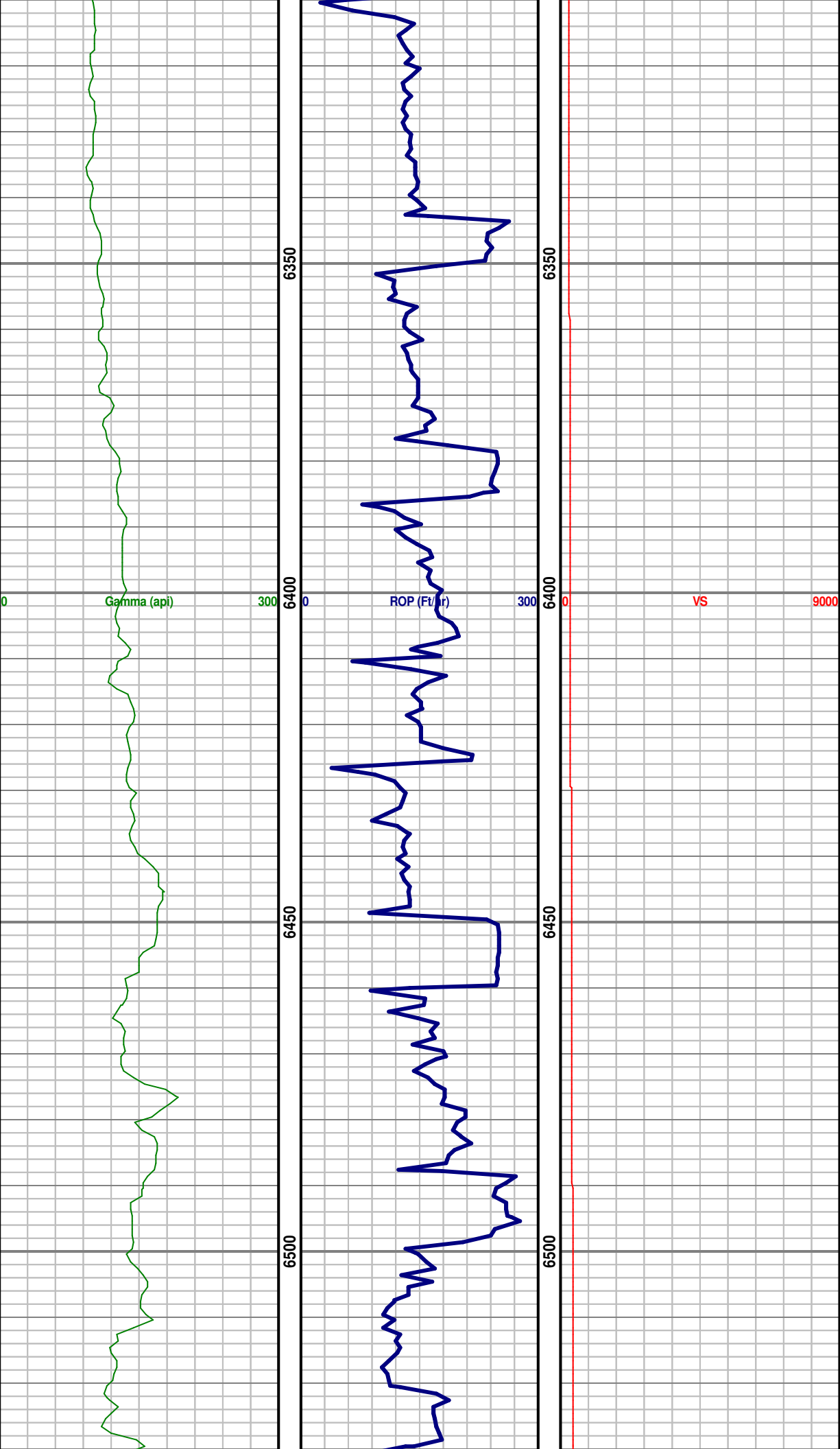
County: Weld
State: Colorado

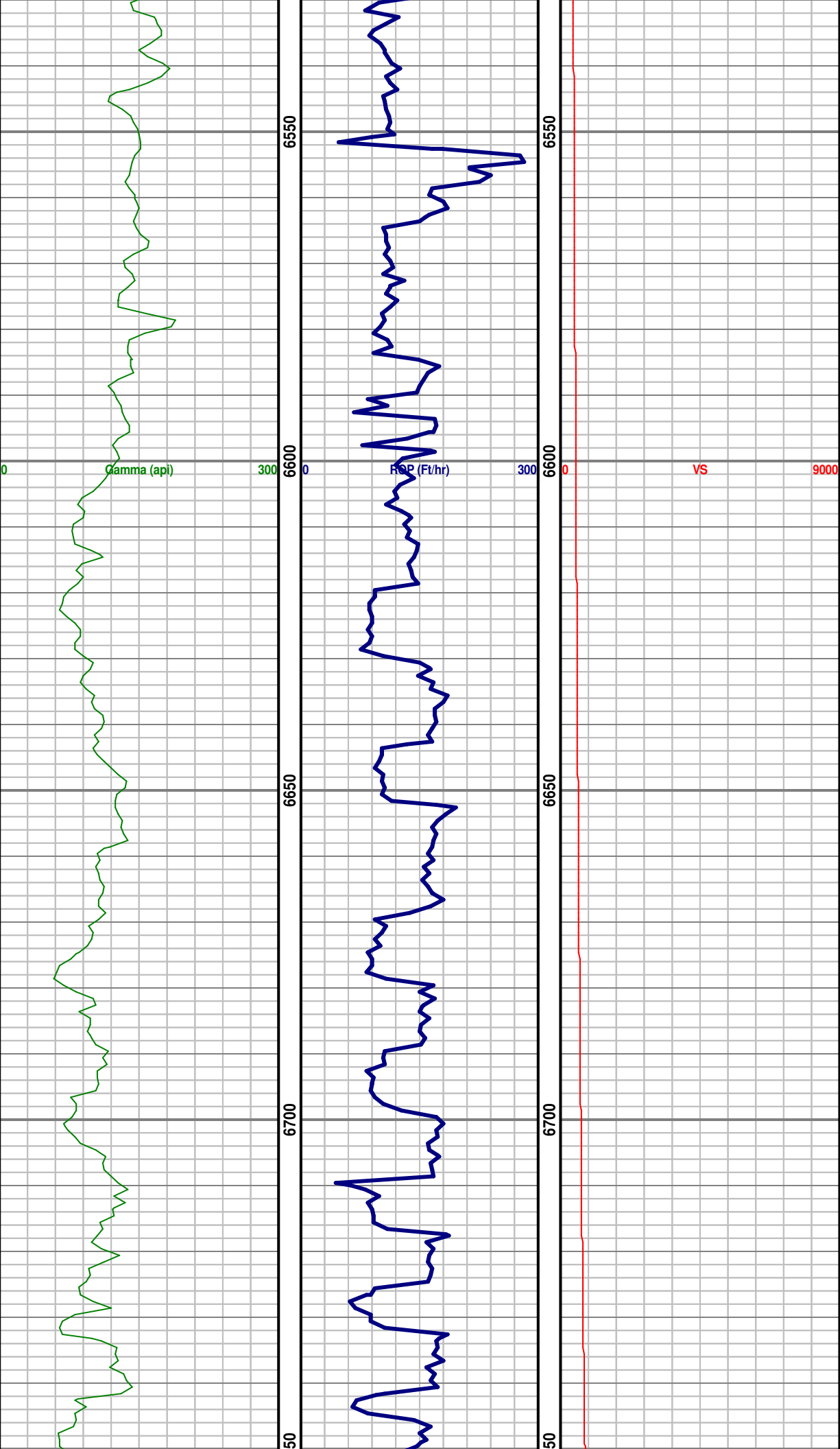
Drilling Rig: Ensign 123
Total Depth: 13,455' MD
TD Date: December 18, 2014
Field : Wattenberg
KB Elevation: 4,631'
GR Elevation: 4,616'
API Number: 05-123-40077-0000

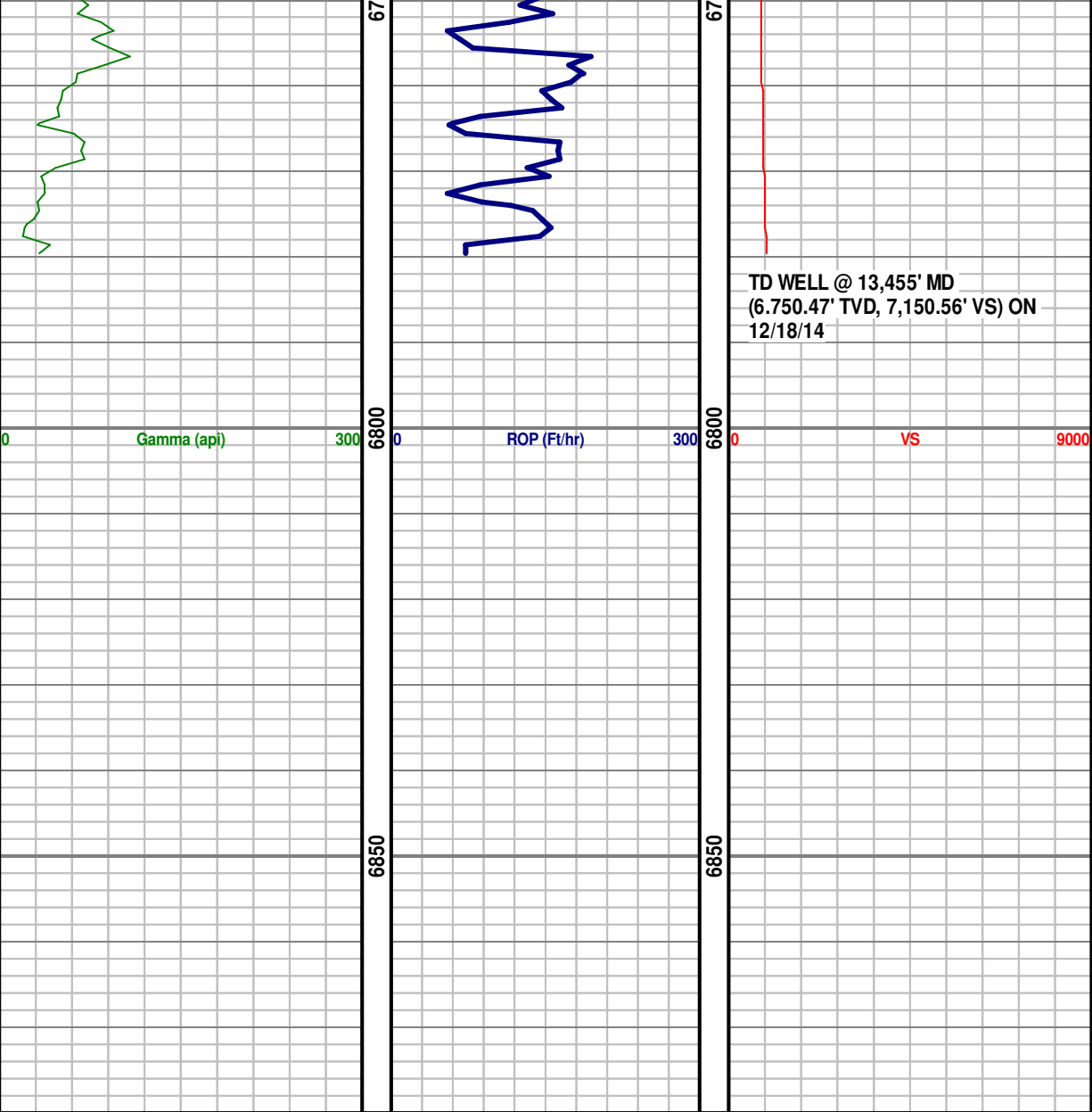


	<div>Gamma (api)<div></div></div>	<div>Drill Depth v. Time</div> <div>ROP (Ft/hr)<div></div></div>	<div>VS</div> <div>VS<div></div></div>	COMMENTS
	<div>0<div>Gamma (api)</div>300</div> <div></div>	<div>0<div>ROP (Ft/hr)</div>300</div> <div></div>	<div>0<div>VS</div>9000</div> <div></div>	









TD CURVE @
7,340' MD
(6,787.87' TVD,
1,045.77' VS)

TD WELL @ 13,455' MD
(6,750.47' TVD, 7,150.56' VS) ON
12/18/14