

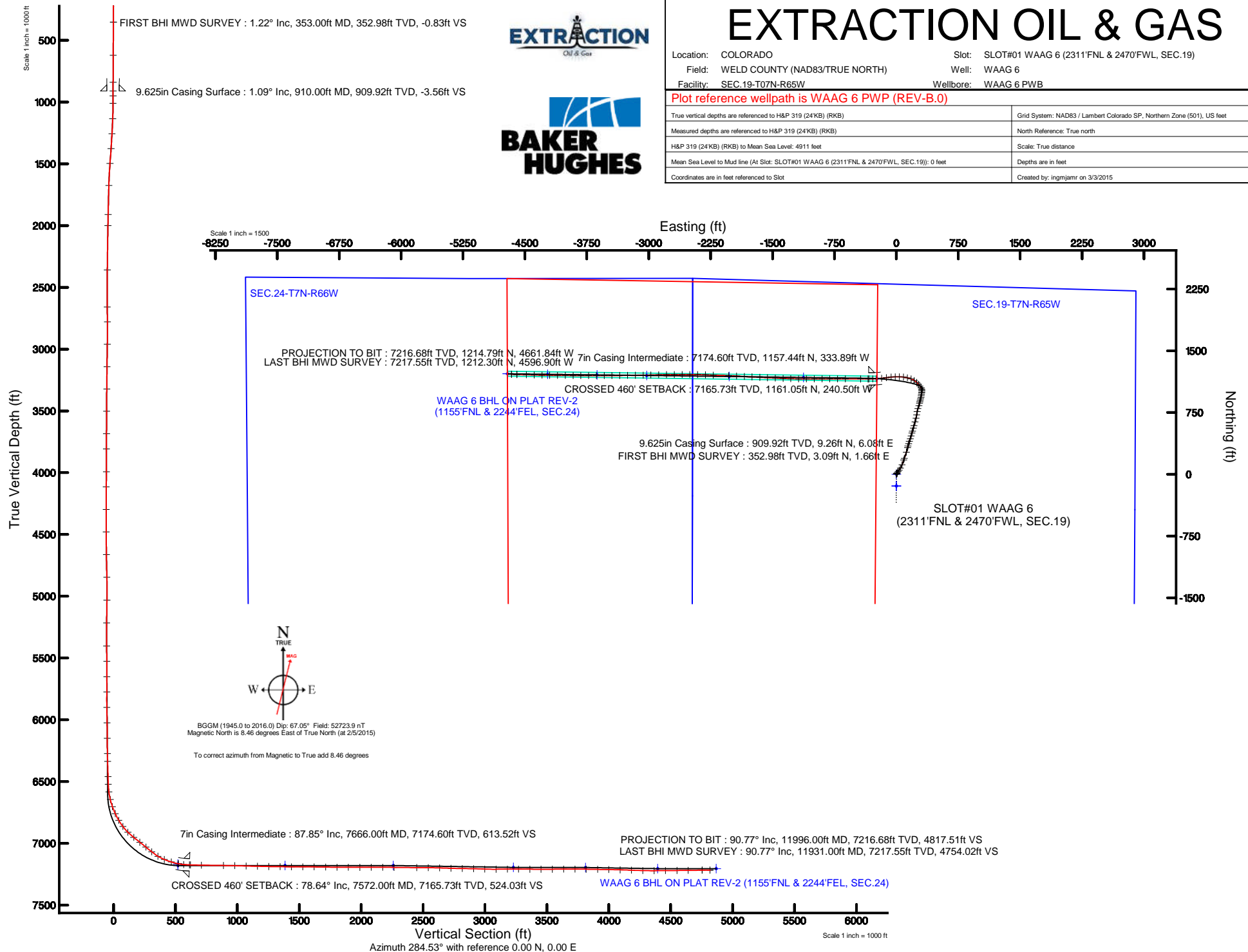


EXTRACTION OIL & GAS

Location: COLORADO
Field: WELD COUNTY (NAD83/TRUE NORTH)
Facility: SEC.19-T07N-R65W
Slot: SLOT#01 WAAG 6 (2311'FNL & 2470'FWL, SEC.19)
Well: WAAG 6
Wellbore: WAAG 6 PWB

Plot reference wellpath is WAAG 6 PWB (REV-B.0)

True vertical depths are referenced to H&P 319 (24'KB) (RKB)	Grid System: NAD83 / Lambert Colorado SP, Northern Zone (501), US feet
Measured depths are referenced to H&P 319 (24'KB) (RKB)	North Reference: True north
H&P 319 (24'KB) (RKB) to Mean Sea Level: 4911 feet	Scale: True distance
Mean Sea Level to Mud line (At Slot: SLOT#01 WAAG 6 (2311'FNL & 2470'FWL, SEC.19)): 0 feet	Depths are in feet
Coordinates are in feet referenced to Slot	Created by: ingmjmr on 3/3/2015





Actual Wellpath Report

WAAG 6 AWP

Page 1 of 8



REFERENCE WELLPATH IDENTIFICATION

Operator	EXTRACTION OIL & GAS	Slot	SLOT#01 WAAG 6 (2311'FNL & 2470'FWL, SEC.19)
Area	COLORADO	Well	WAAG 6
Field	WELD COUNTY (NAD83/TRUE NORTH)	Wellbore	WAAG 6 AWB
Facility	SEC.19-T07N-R65W		

REPORT SETUP INFORMATION

Projection System	NAD83 / Lambert Colorado SP, Northern Zone (501), US feet	Software System	WellArchitect® 4.1.1
North Reference	True	User	Ingmjamr
Scale	0.999972	Report Generated	3/3/2015 at 3:25:49 PM
Convergence at slot	0.51° East	Database/Source file	Denver/WAAG_6_AWB.xml

WELLPATH LOCATION

	Local coordinates		Grid coordinates		Geographic coordinates	
	North[ft]	East[ft]	Easting[US ft]	Northing[US ft]	Latitude	Longitude
Slot Location	0.00	0.00	3220340.15	1448446.32	40°33'42.048"N	104°42'25.056"W
Facility Reference Pt			3220340.15	1448446.32	40°33'42.048"N	104°42'25.056"W
Field Reference Pt			3185481.27	1419166.81	40°28'55.560"N	104°49'59.556"W

WELLPATH DATUM

Calculation method	Minimum curvature	H&P 319 (24'KB) (RKB) to Facility Vertical Datum	4911.00ft
Horizontal Reference Pt	Slot	H&P 319 (24'KB) (RKB) to Mean Sea Level	4911.00ft
Vertical Reference Pt	H&P 319 (24'KB) (RKB)	H&P 319 (24'KB) (RKB) to Mud Line at Slot (SLOT#01 WAAG 6 (2311'FNL & 2470'FWL, SEC.19))	4911.00ft
MD Reference Pt	H&P 319 (24'KB) (RKB)	Section Origin	N 0.00, E 0.00 ft
Field Vertical Reference	Mean Sea Level	Section Azimuth	284.53°



Actual Wellpath Report

WAAG 6 AWP

Page 2 of 8



REFERENCE WELLPATH IDENTIFICATION

Operator	EXTRACTION OIL & GAS	Slot	SLOT#01 WAAG 6 (2311'FNL & 2470'FWL, SEC.19)
Area	COLORADO	Well	WAAG 6
Field	WELD COUNTY (NAD83/TRUE NORTH)	Wellbore	WAAG 6 AWB
Facility	SEC.19-T07N-R65W		

WELLPATH DATA (103 stations) † = interpolated/extrapolated station

MD [ft]	Inclination [°]	Azimuth [°]	TVD [ft]	Vert Sect [ft]	North [ft]	East [ft]	Latitude	Longitude	DLS [°/100ft]	Comments
0.00†	0.000	28.240	0.00	0.00	0.00	0.00	40°33'42.048"N	104°42'25.056"W	0.00	
24.00	0.000	28.240	24.00	0.00	0.00	0.00	40°33'42.048"N	104°42'25.056"W	0.00	
353.00	1.220	28.240	352.98	-0.83	3.09	1.66	40°33'42.078"N	104°42'25.035"W	0.37	FIRST BHI MWD SURVEY
622.00	0.500	58.790	621.94	-2.33	6.22	4.02	40°33'42.109"N	104°42'25.004"W	0.31	
840.00	0.870	28.950	839.93	-3.40	8.16	5.63	40°33'42.129"N	104°42'24.983"W	0.23	
950.00	1.240	11.360	949.91	-3.55	10.06	6.27	40°33'42.147"N	104°42'24.975"W	0.44	
1010.00	3.170	22.300	1009.86	-3.74	12.23	7.03	40°33'42.169"N	104°42'24.965"W	3.28	
1135.00	5.860	35.660	1134.47	-6.50	20.61	12.06	40°33'42.252"N	104°42'24.900"W	2.30	
1258.00	8.920	37.250	1256.43	-12.45	33.31	21.49	40°33'42.377"N	104°42'24.778"W	2.49	
1380.00	11.820	32.530	1376.43	-19.97	51.37	33.94	40°33'42.556"N	104°42'24.616"W	2.48	
1503.00	14.300	31.620	1496.24	-28.33	74.93	48.68	40°33'42.788"N	104°42'24.425"W	2.02	
1687.00	14.840	20.630	1674.35	-37.52	116.35	68.90	40°33'43.198"N	104°42'24.163"W	1.53	
1931.00	13.880	19.420	1910.73	-43.34	173.19	89.64	40°33'43.759"N	104°42'23.895"W	0.41	
2023.00	13.680	18.880	2000.08	-45.10	193.89	96.83	40°33'43.964"N	104°42'23.801"W	0.26	
2390.00	11.330	17.330	2358.35	-50.16	269.38	121.62	40°33'44.710"N	104°42'23.480"W	0.65	
2696.00	9.780	11.920	2659.17	-50.45	323.51	135.94	40°33'45.245"N	104°42'23.295"W	0.60	
2818.00	9.360	11.070	2779.47	-49.38	343.38	139.98	40°33'45.441"N	104°42'23.242"W	0.36	
3002.00	9.100	20.500	2961.10	-50.00	371.70	147.95	40°33'45.721"N	104°42'23.139"W	0.83	
3185.00	9.500	18.150	3141.69	-52.46	399.60	157.73	40°33'45.997"N	104°42'23.012"W	0.30	
3369.00	11.270	18.600	3322.67	-54.69	431.07	168.19	40°33'46.308"N	104°42'22.877"W	0.96	
3552.00	11.800	14.380	3501.98	-55.92	466.15	178.54	40°33'46.654"N	104°42'22.743"W	0.54	
3738.00	10.290	17.720	3684.53	-56.79	500.40	188.32	40°33'46.993"N	104°42'22.616"W	0.88	
3863.00	11.240	13.810	3807.33	-57.26	522.86	194.63	40°33'47.215"N	104°42'22.534"W	0.96	
4052.00	13.610	16.220	3991.89	-57.69	562.11	205.24	40°33'47.602"N	104°42'22.397"W	1.28	
4178.00	14.220	16.070	4114.20	-58.55	591.21	213.66	40°33'47.890"N	104°42'22.288"W	0.48	
4367.00	15.040	15.610	4297.07	-59.64	637.14	226.69	40°33'48.344"N	104°42'22.119"W	0.44	
4555.00	13.510	12.870	4479.26	-59.46	682.04	238.14	40°33'48.787"N	104°42'21.970"W	0.89	
4743.00	11.610	10.230	4662.75	-57.41	722.07	246.40	40°33'49.183"N	104°42'21.863"W	1.06	
4931.00	12.070	7.860	4846.75	-53.71	760.16	252.44	40°33'49.559"N	104°42'21.785"W	0.36	
5120.00	11.810	19.670	5031.69	-53.15	797.95	261.66	40°33'49.933"N	104°42'21.666"W	1.30	



Actual Wellpath Report

WAAG 6 AWP

Page 3 of 8



REFERENCE WELLPATH IDENTIFICATION

Operator	EXTRACTION OIL & GAS	Slot	SLOT#01 WAAG 6 (2311'FNL & 2470'FWL, SEC.19)
Area	COLORADO	Well	WAAG 6
Field	WELD COUNTY (NAD83/TRUE NORTH)	Wellbore	WAAG 6 AWB
Facility	SEC.19-T07N-R65W		

WELLPATH DATA (103 stations)

MD [ft]	Inclination [°]	Azimuth [°]	TVD [ft]	Vert Sect [ft]	North [ft]	East [ft]	Latitude	Longitude	DLS [°/100ft]	Comments
5309.00	10.960	16.360	5216.97	-55.46	833.41	273.23	40°33'50.283"N	104°42'21.516"W	0.57	
5497.00	7.990	11.710	5402.39	-55.39	863.36	280.92	40°33'50.579"N	104°42'21.416"W	1.63	
5623.00	7.910	11.390	5527.18	-54.49	880.43	284.41	40°33'50.748"N	104°42'21.371"W	0.07	
5749.00	8.670	12.130	5651.86	-53.62	898.21	288.11	40°33'50.924"N	104°42'21.323"W	0.61	
5874.00	8.310	22.320	5775.50	-54.45	915.78	293.52	40°33'51.097"N	104°42'21.253"W	1.24	
6000.00	9.120	7.040	5900.06	-54.38	934.12	298.21	40°33'51.278"N	104°42'21.192"W	1.94	
6126.00	8.160	7.680	6024.63	-52.01	952.89	300.63	40°33'51.464"N	104°42'21.161"W	0.77	
6252.00	7.970	13.040	6149.38	-50.72	970.26	303.79	40°33'51.635"N	104°42'21.120"W	0.62	
6378.00	8.970	6.100	6274.01	-49.06	988.54	306.81	40°33'51.816"N	104°42'21.081"W	1.13	
6441.00	7.650	4.150	6336.35	-47.58	997.61	307.63	40°33'51.906"N	104°42'21.070"W	2.14	
6566.00	8.640	3.540	6460.09	-44.29	1015.28	308.81	40°33'52.080"N	104°42'21.055"W	0.80	
6629.00	8.340	358.680	6522.40	-42.14	1024.57	309.00	40°33'52.172"N	104°42'21.052"W	1.23	
6692.00	13.570	343.530	6584.24	-37.08	1036.23	306.80	40°33'52.287"N	104°42'21.081"W	9.41	
6755.00	18.680	329.550	6644.76	-26.14	1052.04	299.58	40°33'52.444"N	104°42'21.174"W	10.13	
6818.00	24.530	323.000	6703.32	-8.75	1071.20	286.59	40°33'52.633"N	104°42'21.343"W	10.03	
6881.00	28.650	317.620	6759.65	14.16	1092.81	268.53	40°33'52.846"N	104°42'21.577"W	7.57	
6944.00	33.810	314.950	6813.51	41.94	1116.37	245.92	40°33'53.079"N	104°42'21.870"W	8.48	
7007.00	38.850	302.390	6864.32	75.93	1139.38	216.77	40°33'53.307"N	104°42'22.247"W	14.23	
7069.00	45.130	291.090	6910.44	116.37	1157.75	179.77	40°33'53.488"N	104°42'22.727"W	15.82	
7132.00	51.540	281.580	6952.35	163.29	1170.76	134.67	40°33'53.617"N	104°42'23.311"W	15.17	
7195.00	51.770	280.380	6991.44	212.60	1180.17	86.16	40°33'53.710"N	104°42'23.940"W	1.54	
7258.00	52.030	269.530	7030.39	261.36	1184.44	36.90	40°33'53.752"N	104°42'24.578"W	13.55	
7321.00	51.880	268.500	7069.21	309.16	1183.58	-12.70	40°33'53.743"N	104°42'25.221"W	1.31	
7384.00	59.500	264.520	7104.71	358.57	1180.34	-64.59	40°33'53.711"N	104°42'25.893"W	13.17	
7446.00	69.710	262.350	7131.26	410.74	1173.90	-120.14	40°33'53.648"N	104°42'26.613"W	16.77	
7509.00	74.040	263.720	7150.86	466.44	1166.65	-179.56	40°33'53.576"N	104°42'27.383"W	7.18	
7572.00	78.640	265.760	7165.73	524.03	1161.05	-240.50	40°33'53.521"N	104°42'28.172"W	7.95	CROSSED 460' SETBACK
7617.00	85.720	267.680	7171.85	566.45	1158.51	-284.98	40°33'53.496"N	104°42'28.749"W	16.29	
7675.00	88.240	270.210	7174.91	622.23	1157.44	-342.88	40°33'53.485"N	104°42'29.499"W	6.15	
7766.00	89.070	270.140	7177.04	710.36	1157.72	-433.85	40°33'53.488"N	104°42'30.677"W	0.92	



Actual Wellpath Report

WAAG 6 AWP

Page 4 of 8



REFERENCE WELLPATH IDENTIFICATION

Operator	EXTRACTION OIL & GAS	Slot	SLOT#01 WAAG 6 (2311'FNL & 2470'FWL, SEC.19)
Area	COLORADO	Well	WAAG 6
Field	WELD COUNTY (NAD83/TRUE NORTH)	Wellbore	WAAG 6 AWB
Facility	SEC.19-T07N-R65W		

WELLPATH DATA (103 stations)

MD [ft]	Inclination [°]	Azimuth [°]	TVD [ft]	Vert Sect [ft]	North [ft]	East [ft]	Latitude	Longitude	DLS [°/100ft]	Comments
7950.00	89.350	270.160	7179.58	888.59	1158.20	-617.84	40°33'53.493"N	104°42'33.061"W	0.15	
8044.00	88.760	270.380	7181.13	979.68	1158.64	-711.82	40°33'53.497"N	104°42'34.279"W	0.67	
8139.00	88.330	269.820	7183.54	1071.65	1158.81	-806.79	40°33'53.498"N	104°42'35.510"W	0.74	
8233.00	88.580	269.930	7186.08	1162.56	1158.60	-900.76	40°33'53.496"N	104°42'36.727"W	0.29	
8327.00	88.980	269.850	7188.08	1253.49	1158.42	-994.73	40°33'53.495"N	104°42'37.945"W	0.43	
8422.00	89.470	269.650	7189.37	1345.34	1158.01	-1089.72	40°33'53.490"N	104°42'39.176"W	0.56	
8516.00	89.560	271.350	7190.16	1436.53	1158.83	-1183.71	40°33'53.499"N	104°42'40.393"W	1.81	
8611.00	90.180	271.360	7190.38	1529.03	1161.08	-1278.69	40°33'53.521"N	104°42'41.624"W	0.65	
8705.00	88.920	272.470	7191.11	1620.76	1164.22	-1372.63	40°33'53.552"N	104°42'42.841"W	1.79	
8799.00	89.290	272.550	7192.58	1712.69	1168.33	-1466.53	40°33'53.592"N	104°42'44.058"W	0.40	
8893.00	89.410	272.700	7193.65	1804.66	1172.64	-1560.42	40°33'53.635"N	104°42'45.274"W	0.20	
8987.00	89.620	272.960	7194.45	1896.71	1177.28	-1654.30	40°33'53.681"N	104°42'46.491"W	0.36	
9081.00	90.090	273.260	7194.68	1988.85	1182.38	-1748.16	40°33'53.731"N	104°42'47.707"W	0.59	
9175.00	90.460	273.360	7194.23	2081.05	1187.81	-1842.01	40°33'53.784"N	104°42'48.923"W	0.41	
9270.00	89.750	273.450	7194.06	2174.26	1193.45	-1936.84	40°33'53.840"N	104°42'50.152"W	0.75	
9364.00	89.070	271.950	7195.03	2266.26	1197.88	-2030.73	40°33'53.884"N	104°42'51.368"W	1.75	
9552.00	89.960	272.000	7196.62	2449.76	1204.35	-2218.61	40°33'53.948"N	104°42'53.803"W	0.47	
9647.00	89.350	272.040	7197.19	2542.50	1207.70	-2313.54	40°33'53.981"N	104°42'55.033"W	0.64	
9741.00	87.990	271.540	7199.37	2634.16	1210.64	-2407.47	40°33'54.010"N	104°42'56.250"W	1.54	
9835.00	88.520	269.450	7202.23	2725.31	1211.45	-2501.42	40°33'54.018"N	104°42'57.467"W	2.29	
9929.00	89.230	269.840	7204.08	2816.14	1210.87	-2595.40	40°33'54.012"N	104°42'58.685"W	0.86	
10024.00	88.670	270.090	7205.82	2908.07	1210.81	-2690.38	40°33'54.011"N	104°42'59.915"W	0.65	
10118.00	88.120	268.860	7208.45	2998.81	1209.95	-2784.34	40°33'54.002"N	104°43'01.133"W	1.43	
10212.00	90.300	268.630	7209.75	3089.25	1207.89	-2878.30	40°33'53.982"N	104°43'02.350"W	2.33	
10307.00	90.150	268.650	7209.38	3180.63	1205.64	-2973.27	40°33'53.960"N	104°43'03.581"W	0.16	
10401.00	89.870	268.890	7209.36	3271.09	1203.62	-3067.25	40°33'53.939"N	104°43'04.799"W	0.39	
10496.00	89.780	269.240	7209.65	3362.65	1202.07	-3162.24	40°33'53.924"N	104°43'06.029"W	0.38	
10590.00	89.960	269.200	7209.86	3453.32	1200.79	-3256.23	40°33'53.911"N	104°43'07.247"W	0.20	
10684.00	90.150	269.480	7209.77	3544.04	1199.71	-3350.22	40°33'53.900"N	104°43'08.465"W	0.36	
10779.00	90.300	269.790	7209.40	3635.85	1199.10	-3445.22	40°33'53.894"N	104°43'09.696"W	0.36	



Actual Wellpath Report

WAAG 6 AWP

Page 5 of 8



REFERENCE WELLPATH IDENTIFICATION

Operator	EXTRACTION OIL & GAS	Slot	SLOT#01 WAAG 6 (2311'FNL & 2470'FWL, SEC.19)
Area	COLORADO	Well	WAAG 6
Field	WELD COUNTY (NAD83/TRUE NORTH)	Wellbore	WAAG 6 AWB
Facility	SEC.19-T07N-R65W		

WELLPATH DATA (103 stations)

MD [ft]	Inclination [°]	Azimuth [°]	TVD [ft]	Vert Sect [ft]	North [ft]	East [ft]	Latitude	Longitude	DLS [°/100ft]	Comments
10873.00	90.000	270.120	7209.15	3726.82	1199.03	-3539.22	40°33'53.893"N	104°43'10.914"W	0.47	
10967.00	89.320	269.340	7209.71	3817.70	1198.58	-3633.21	40°33'53.889"N	104°43'12.132"W	1.10	
11062.00	89.010	270.160	7211.10	3909.55	1198.17	-3728.20	40°33'53.885"N	104°43'13.363"W	0.92	
11156.00	89.200	270.470	7212.56	4000.66	1198.69	-3822.19	40°33'53.890"N	104°43'14.580"W	0.39	
11250.00	88.270	270.480	7214.64	4091.83	1199.46	-3916.16	40°33'53.897"N	104°43'15.798"W	0.99	
11345.00	88.270	270.530	7217.51	4183.95	1200.30	-4011.12	40°33'53.905"N	104°43'17.028"W	0.05	
11439.00	88.210	270.820	7220.39	4275.18	1201.41	-4105.06	40°33'53.916"N	104°43'18.246"W	0.31	
11533.00	90.520	270.720	7221.44	4366.47	1202.67	-4199.04	40°33'53.928"N	104°43'19.463"W	2.46	
11627.00	90.490	271.000	7220.61	4457.81	1204.08	-4293.03	40°33'53.942"N	104°43'20.681"W	0.30	
11722.00	90.430	271.220	7219.84	4550.21	1205.92	-4388.01	40°33'53.960"N	104°43'21.912"W	0.24	
11815.00	90.640	271.740	7218.98	4640.81	1208.32	-4480.97	40°33'53.984"N	104°43'23.116"W	0.60	
11931.00	90.770	272.190	7217.55	4754.02	1212.30	-4596.90	40°33'54.023"N	104°43'24.618"W	0.40	LAST BHI MWD SURVEY
11996.00	90.770	272.190	7216.68	4817.51	1214.79	-4661.84	40°33'54.047"N	104°43'25.460"W	0.00	PROJECTION TO BIT

HOLE & CASING SECTIONS - Ref Wellbore: WAAG 6 AWB Ref Wellpath: WAAG 6 AWP

String/Diameter	Start MD [ft]	End MD [ft]	Interval [ft]	Start TVD [ft]	End TVD [ft]	Start N/S [ft]	Start E/W [ft]	End N/S [ft]	End E/W [ft]
13.5in Open Hole	24.00	840.00	816.00	24.00	839.93	0.00	0.00	8.16	5.63
9.625in Casing Surface	24.00	910.00	886.00	24.00	909.92	0.00	0.00	9.26	6.08
8.75in Open Hole	840.00	7683.00	6843.00	839.93	7175.15	8.16	5.63	1157.47	-350.88
7in Casing Intermediate	24.00	7666.00	7642.00	24.00	7174.60	0.00	0.00	1157.44	-333.89
6.125in Open Hole	7683.00	11996.00	4313.00	7175.15	7216.68	1157.47	-350.88	1214.79	-4661.84



Actual Wellpath Report

WAAG 6 AWP

Page 6 of 8



REFERENCE WELLPATH IDENTIFICATION

Operator	EXTRACTION OIL & GAS	Slot	SLOT#01 WAAG 6 (2311'FNL & 2470'FWL, SEC.19)
Area	COLORADO	Well	WAAG 6
Field	WELD COUNTY (NAD83/TRUE NORTH)	Wellbore	WAAG 6 AWB
Facility	SEC.19-T07N-R65W		

TARGETS

Name	TVD [ft]	North [ft]	East [ft]	Grid East [US ft]	Grid North [US ft]	Latitude	Longitude	Shape
SEC.19-T7N-R65W	0.00	-142.09	0.00	3220341.42	1448304.24	40°33'40.644"N	104°42'25.056"W	polygon
SEC.24-T7N-R66W	0.00	-142.09	0.00	3220341.42	1448304.24	40°33'40.644"N	104°42'25.056"W	polygon
WAAG 6 BHL ON PLAT REV-1 (1155'FNL & 2244'FEL, SEC.24)	7168.00	1220.93	-4712.18	3215617.39	1449625.02	40°33'54.108"N	104°43'26.112"W	point
WAAG 6 LANDING POINT	7168.00	1162.19	-236.17	3220093.61	1449606.31	40°33'53.532"N	104°42'28.116"W	point
WAAG PAD (460' SETBACK)	7168.00	-142.09	0.00	3220341.42	1448304.24	40°33'40.644"N	104°42'25.056"W	polygon
WAAG 6 LANDING POINT REV-2	7180.00	1162.19	-236.17	3220093.61	1449606.31	40°33'53.532"N	104°42'28.116"W	point
WAAG 6 TARGET 2	7180.00	1176.13	-1125.69	3219204.02	1449612.29	40°33'53.670"N	104°42'39.642"W	point
WAAG 6 TARGET 3	7180.00	1187.37	-2025.61	3218304.07	1449615.49	40°33'53.780"N	104°42'51.302"W	point
WAAG 6 TARGET 4	7195.00	1199.86	-3025.51	3217304.13	1449619.03	40°33'53.902"N	104°43'04.258"W	point
WAAG 6 TARGET 5	7196.00	1207.36	-3625.46	3216704.15	1449621.17	40°33'53.976"N	104°43'12.031"W	point
WAAG 6 BHL ON PLAT REV-2 (1155'FNL & 2244'FEL, SEC.24)	7205.00	1220.93	-4712.18	3215617.39	1449625.02	40°33'54.108"N	104°43'26.112"W	point
WAAG 6 DRILLING CORRIDOR (60')	7205.00	0.00	0.00	3220340.15	1448446.31	40°33'42.048"N	104°42'25.056"W	polygon



Actual Wellpath Report

WAAG 6 AWP

Page 7 of 8



REFERENCE WELLPATH IDENTIFICATION

Operator	EXTRACTION OIL & GAS	Slot	SLOT#01 WAAG 6 (2311'FNL & 2470'FWL, SEC.19)
Area	COLORADO	Well	WAAG 6
Field	WELD COUNTY (NAD83/TRUE NORTH)	Wellbore	WAAG 6 AWB
Facility	SEC.19-T07N-R65W		

TARGETS

Name	TVD [ft]	North [ft]	East [ft]	Grid East [US ft]	Grid North [US ft]	Latitude	Longitude	Shape
WAAG 6 TARGET 6	7205.00	1214.85	-4225.40	3216104.19	1449623.29	40°33'54.049"N	104°43'19.805"W	point

WELLPATH COMPOSITION - Ref Wellbore: WAAG 6 AWB Ref Wellpath: WAAG 6 AWP

Start MD [ft]	End MD [ft]	Positional Uncertainty Model	Log Name/Comment	Wellbore
24.00	840.00	NaviTrak (Standard)	BHI MWD/NAVITRAK (STD) 13.5" HOLE <353-840>	WAAG 6 AWB
840.00	7617.00	NaviTrak (Standard)	BHI MWD/NAVITRAK (STD) 8.75" HOLE <950-7617>	WAAG 6 AWB
7617.00	11931.00	NaviTrak (Standard)	BHI MWD/NAVITRAK (STD) 6.125" HOLE <7675-11931>	WAAG 6 AWB
11931.00	11996.00	Blind Drilling (std)	Projection to bit	WAAG 6 AWB



Actual Wellpath Report

WAAG 6 AWP

Page 8 of 8



REFERENCE WELLPATH IDENTIFICATION

Operator	EXTRACTION OIL & GAS	Slot	SLOT#01 WAAG 6 (2311'FNL & 2470'FWL, SEC.19)
Area	COLORADO	Well	WAAG 6
Field	WELD COUNTY (NAD83/TRUE NORTH)	Wellbore	WAAG 6 AWB
Facility	SEC.19-T07N-R65W		

WELLPATH COMMENTS

MD [ft]	Inclination [°]	Azimuth [°]	TVD [ft]	Comment
353.00	1.220	28.240	352.98	FIRST BHI MWD SURVEY
7572.00	78.640	265.760	7165.73	CROSSED 460' SETBACK
11931.00	90.770	272.190	7217.55	LAST BHI MWD SURVEY
11996.00	90.770	272.190	7216.68	PROJECTION TO BIT