



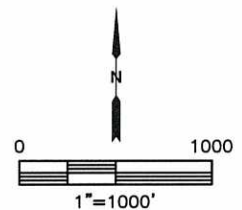
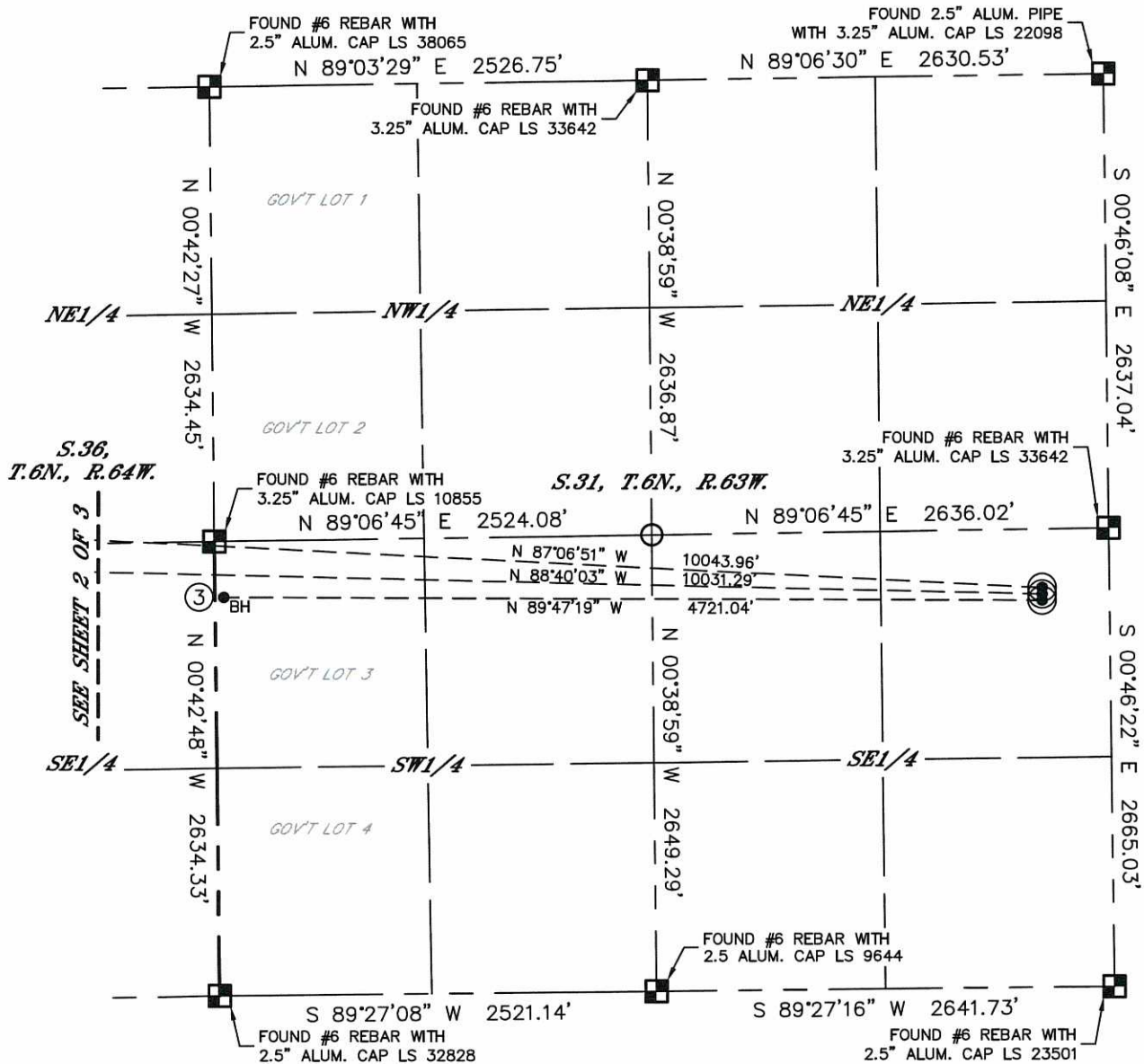
Lat40°, Inc. 6250 W. 10th Street, Unit 2, Greeley, CO 970-515-5294

MULTI-WELL PLAN

WELLS RANCH STATE A36-655 PAD

THIS MAP DOES NOT REPRESENT A BOUNDARY SURVEY

SECTION: 31
TOWNSHIP: 6N
RANGE: 63W
6TH. P.M.
WELD COUNTY, CO



| # | WELL NAME | BHL FOOTAGE | BHL LAT° | BHL LONG° | BHL S-T-R |
|---|----------------------------|-----------------|----------|------------|-----------|
| 1 | WELLS RANCH STATE A36-655 | 2310 FNL 50 FWL | 40.44380 | -104.50763 | 36-6-64 |
| 2 | WELLS RANCH STATE A36-649 | 2655 FSL 50 FWL | 40.44295 | -104.50763 | 36-6-64 |
| 3 | WELLS RANCH STATE AA31-645 | 2310 FSL 50 FWL | 40.44209 | -104.48858 | 31-6-63 |



Lat40°, Inc. 6250 W. 10th Street, Unit 2, Greeley, CO 970-515-5294

MULTI-WELL PLAN

WELLS RANCH STATE A36-655 PAD

SECTION: 31
TOWNSHIP: 6N
RANGE: 63W
6TH. P.M.
WELD COUNTY, CO

