

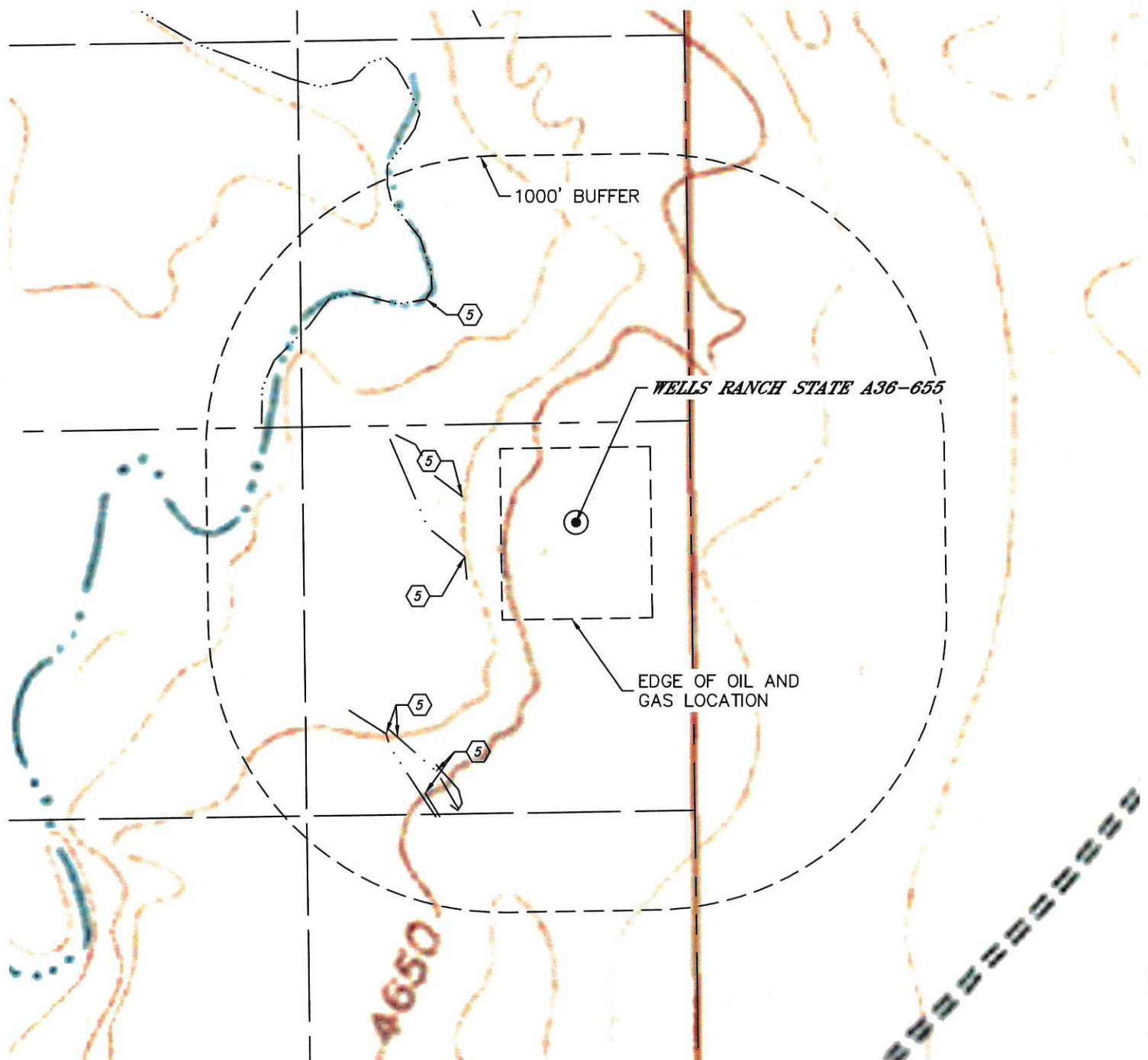


Lat40°, Inc. 6250 W. 10th Street, Unit 2, Greeley, CO 970-515-5294

## HYDROLOGY MAP

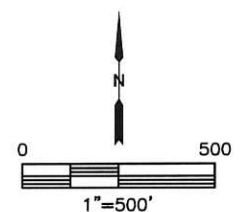
WELLS RANCH STATE A36-655 PAD

SECTION: 31  
TOWNSHIP: 6N  
RANGE: 63W  
6TH. P.M.  
WELD COUNTY, CO



DISTANCES MEASURED FROM THE EDGE OF THE OIL AND GAS LOCATION.

(5) LOW AREA 125' & 131' W, 536', 556', 563' & 647' SW, 570' NW



DATE: 12/2/2014  
PROJECT#: 2014164