

**RADIAL CEMENT BOND
GAMMA RAY
CCL**

Company KERR MCGEE OIL AND GAS
Well MAYER 14-22A
Field WATTENBERG
County WELD State CO

Location: API # : 05-123-21248

SHL: 545' FSE & 2076' FWL SE/SW
LAT: 40.20536 & LONG:-104.87852

Other Services

SEC 22 TWP 3N RGE 67W

Permanent Datum GL
Log Measured From KB 16'
Drilling Measured From KB

Elevation 4804'
K.B. 4820'
D.F. 4819'
G.L. 4804'

Date 3-12-2015

Run Number ONE
Depth Driller 7786'
Depth Logger 3807'
Bottom Logged Interval 3805'
Top Log Interval SURFACE
Open Hole Size 7.875
Type Fluid WATER
Density / Viscosity 1.0
Max. Recorded Temp. 117 DEG F
Estimated Cement Top N/A
Time Well Ready N/A
Time Logger on Bottom N/A
Equipment Number 4310
Location GREELEY
Recorded By N. BREHMER
Witnessed By S. OLIVAS

Borehole Record
Run Number Bit From To Size Weight From To

Casing Record	Size	Wgt/Ft	Top	Bottom
Surface String	8.63	24#	SURFACE	623'
Prot. String				
Production String	4.5	11.6#	SURFACE	7778'
Liner				

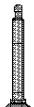
<<< Fold Here >>>

All interpretations are opinions based on inferences from electrical or other measurements and we cannot and do not guarantee the accuracy or correctness of any interpretation, and we shall not, except in the case of gross or willful negligence on our part, be liable or responsible for any loss, costs, damages, or expenses incurred or sustained by anyone resulting from any interpretation made by any of our officers, agents or employees. These interpretations are also subject to our general terms and conditions set out in our current Price Schedule.

Comments

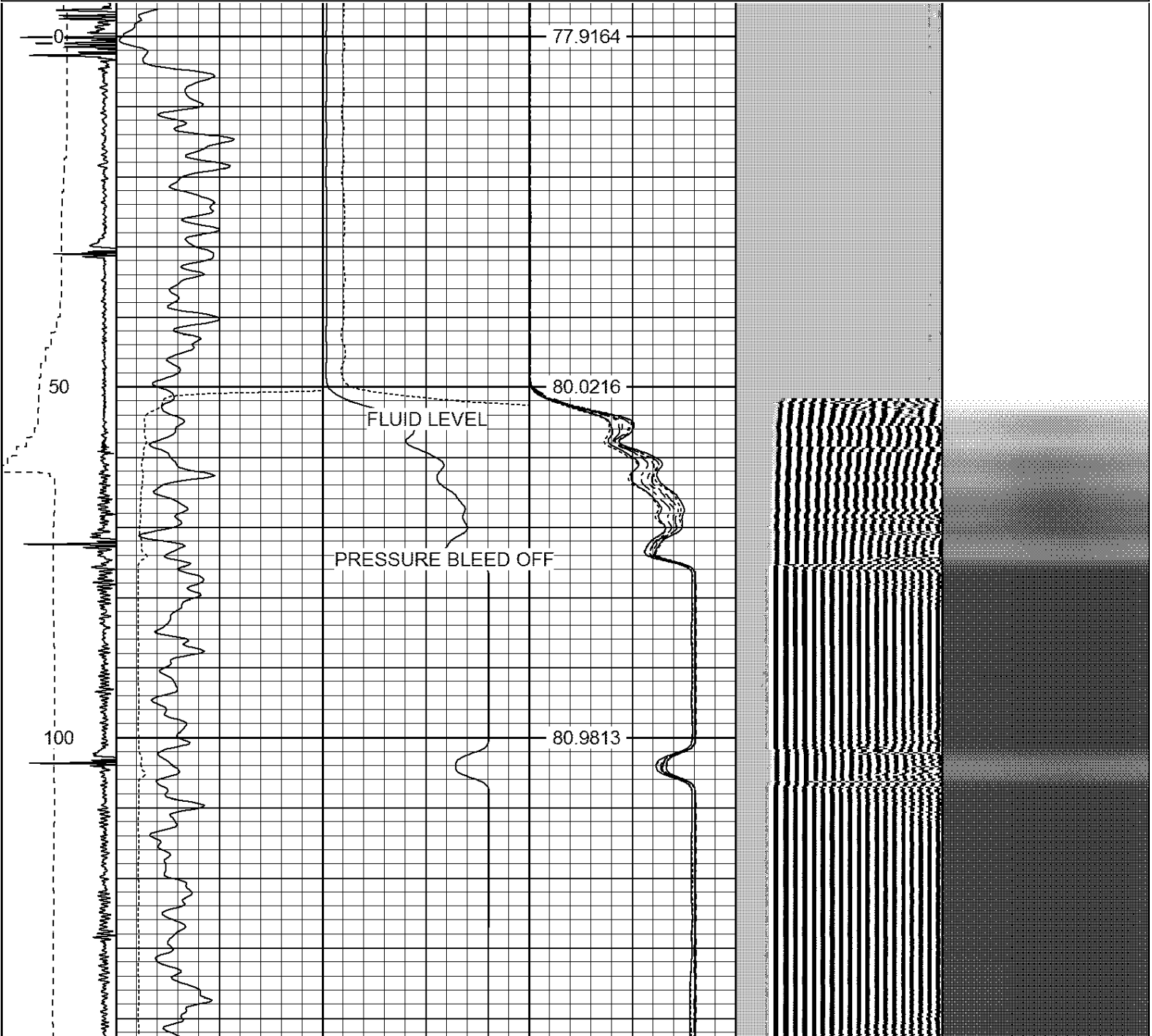
RAN CBL TO VERIFY CEMENT BOND
HOLE WAS LOADED ON ARRIVAL
CBL RAN WITH 1000PSI ON WELL
CORRELATED TO BRANDEX LOG 1-13-20003
CALIBRATED FREE PIPE @3490'

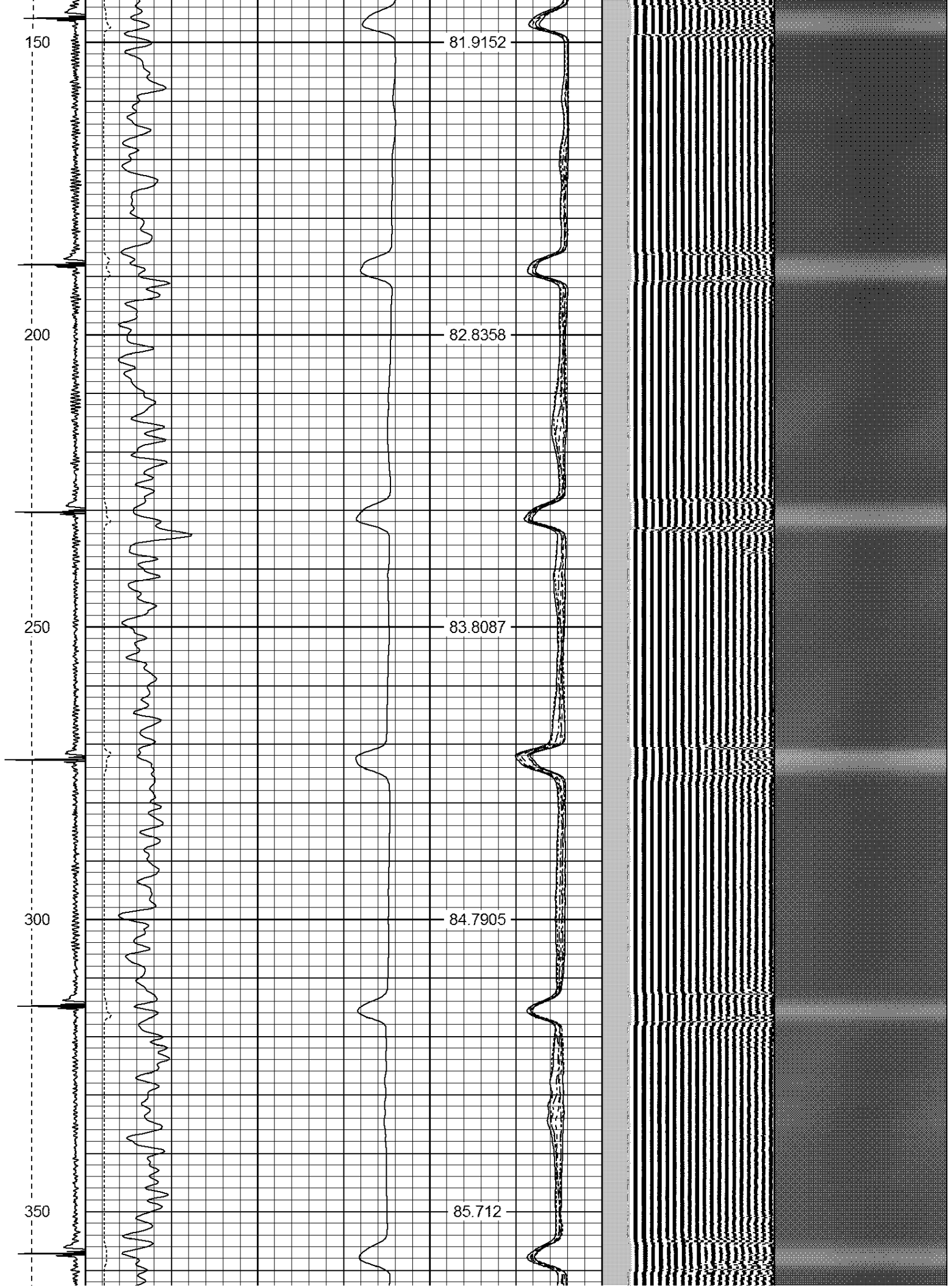
THANK YOU FOR USING WARRIOR !!!!!!!

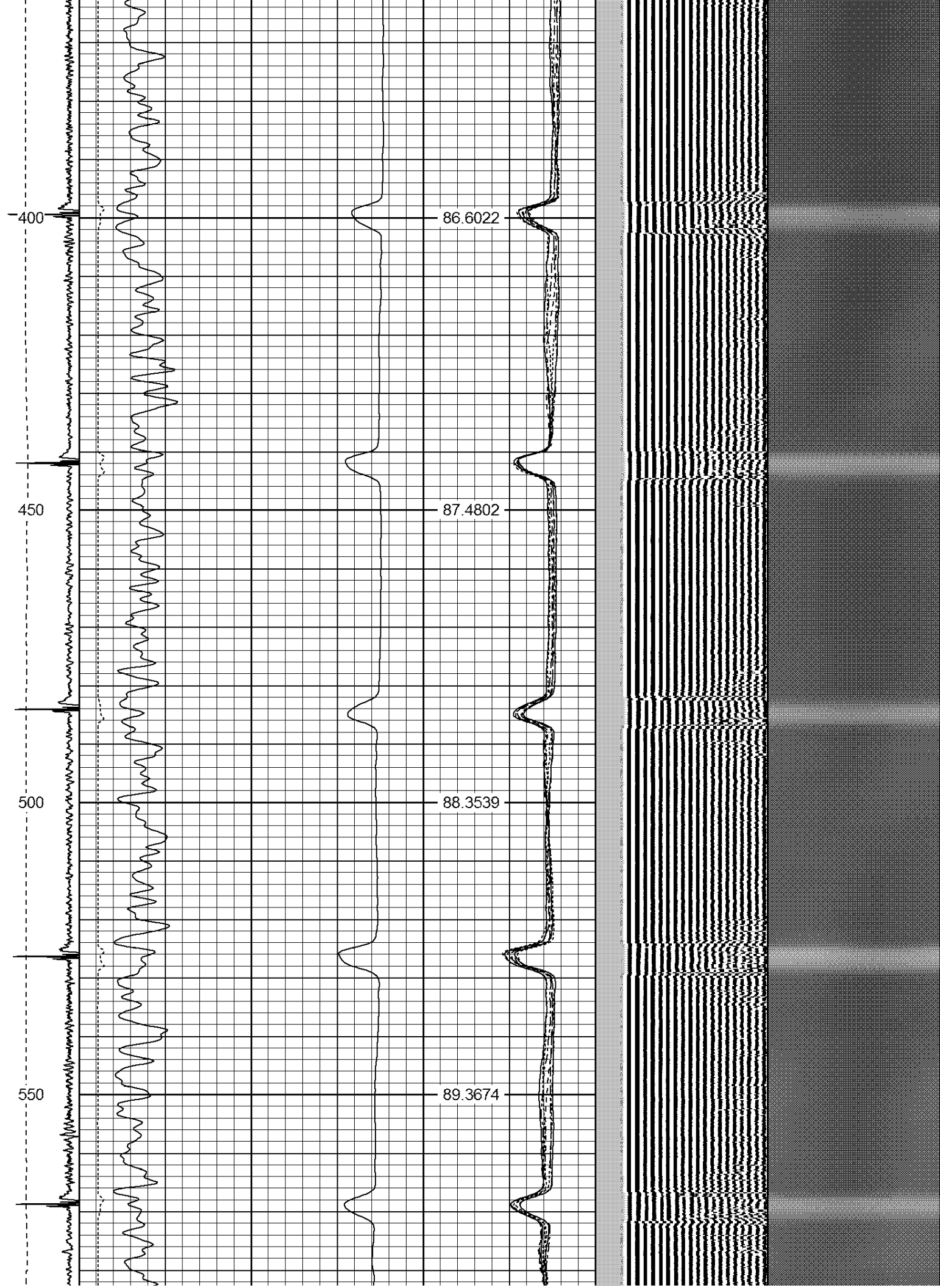
Sensor	Offset (ft)	Schematic	Description	Len (ft)	OD (in)	Wt (lb)
			1_4	1.00	1.36	5.00

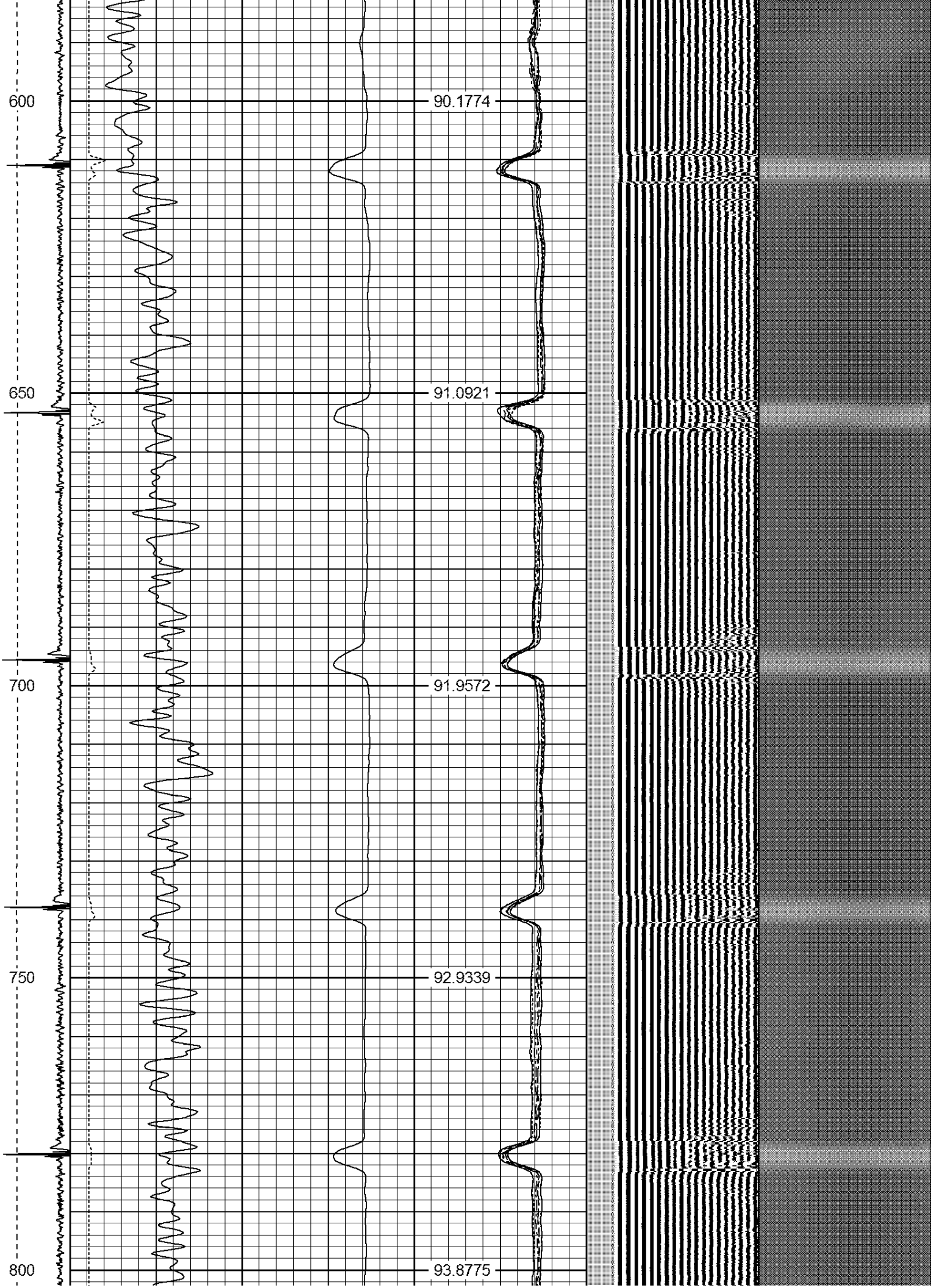
Database File: mayer 14-22a.db
Dataset Pathname: pass2
Presentation Format: ips_rbt
Dataset Creation: Thu Mar 12 07:23:27 2015 by Log 7.0 B1
Charted by: Depth in Feet scaled 1:240

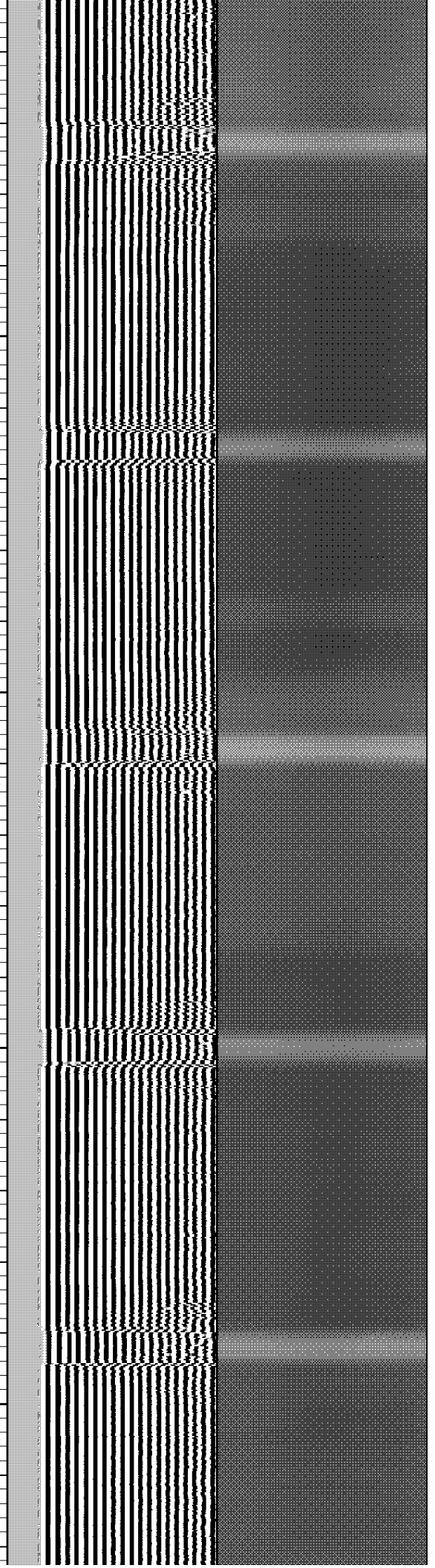
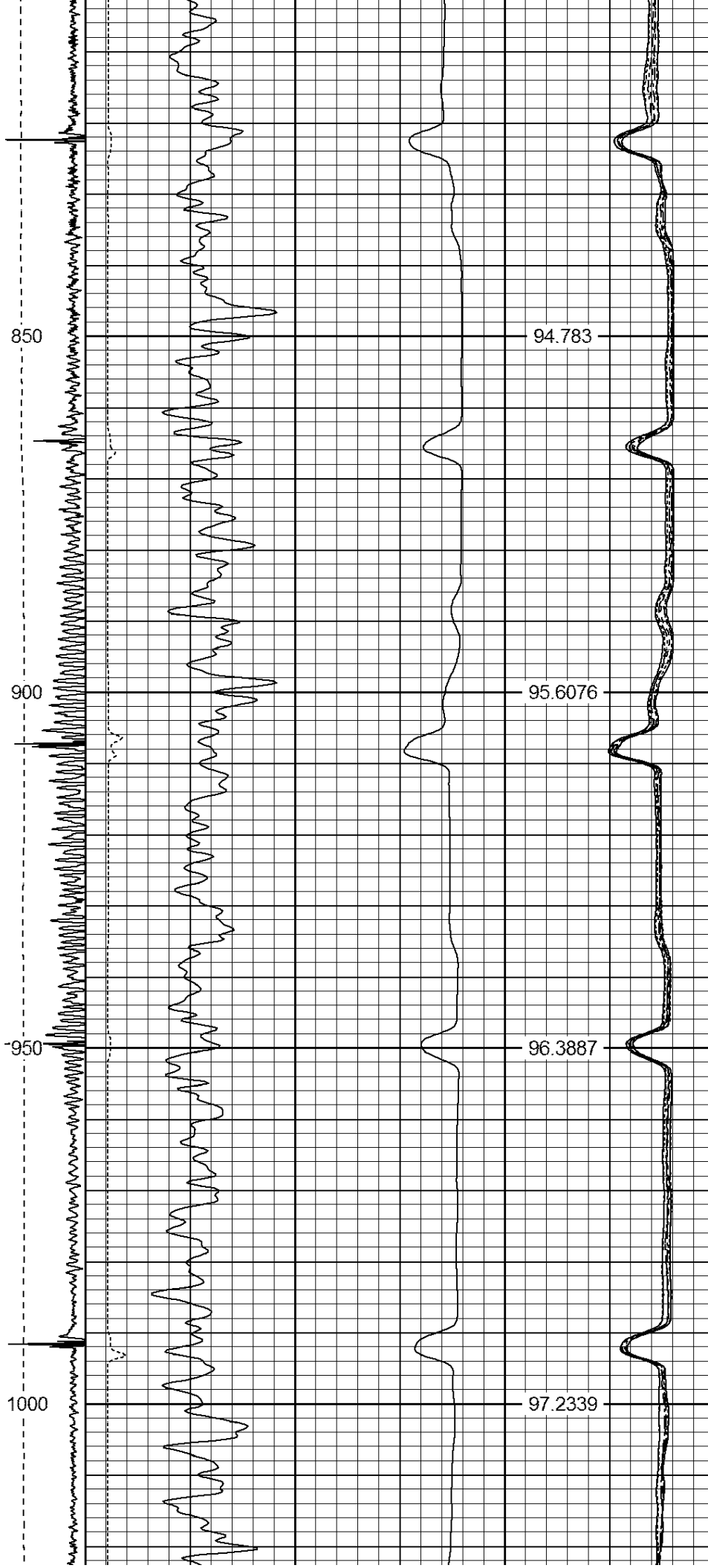
-9	CCL	1	200	TT (usec)	800	0	AMP (mV)	100	0	AMPS1	100	200	VDL	1200	1	Cement Map	8
LSPD			0	GR (GAPI)	200	0	AMPx5 (mV)	20	0	AMPS2	100				1		100
(ft/min)			200	GR (GAPI)	400				0	AMPS4	100						
0		250							0	AMPS5	100						
									0	AMPS6	100						
									0	AMPS7	100						
									0	AMPS8	100						
										IntTemp							
										(degF)							



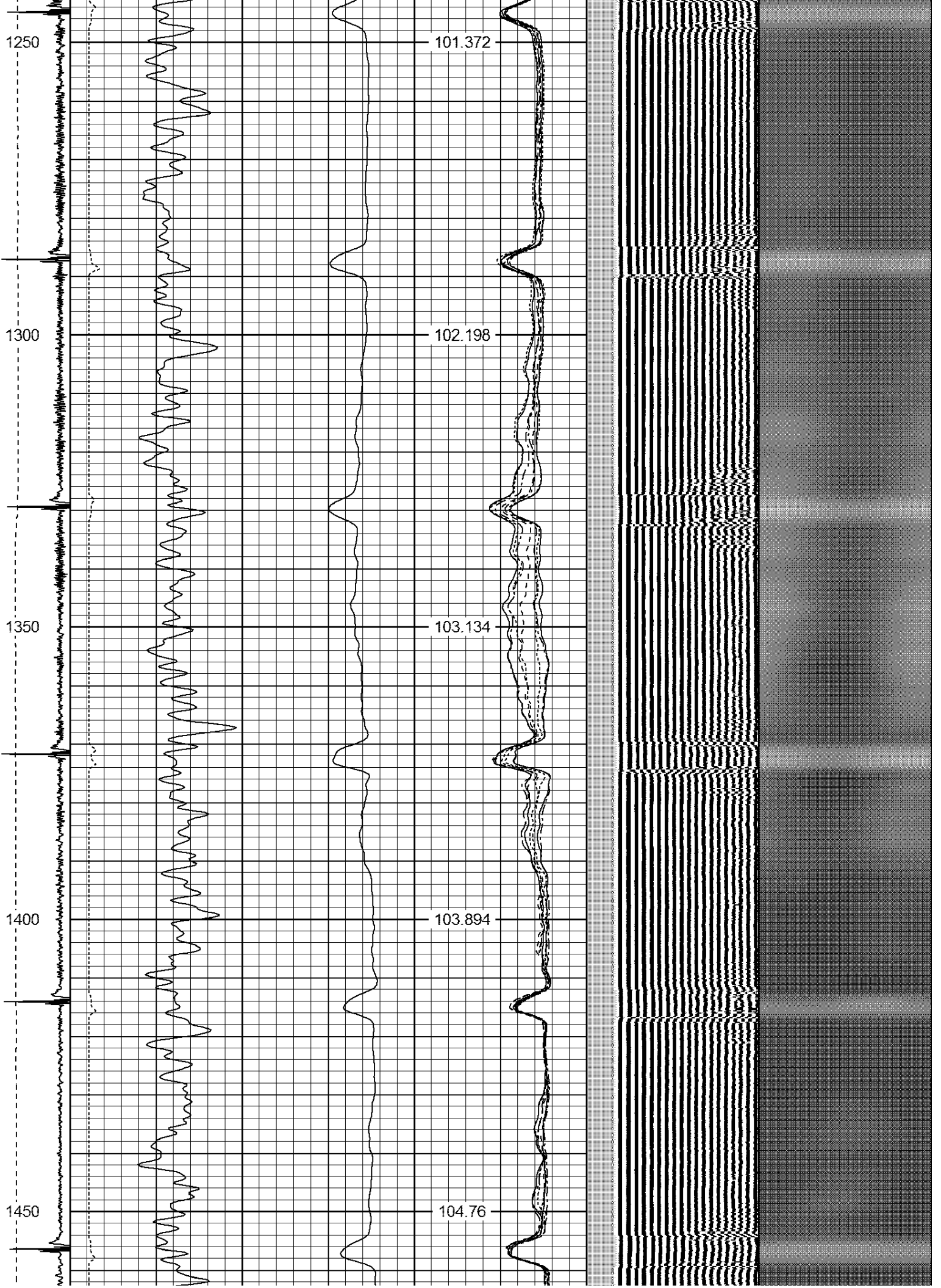


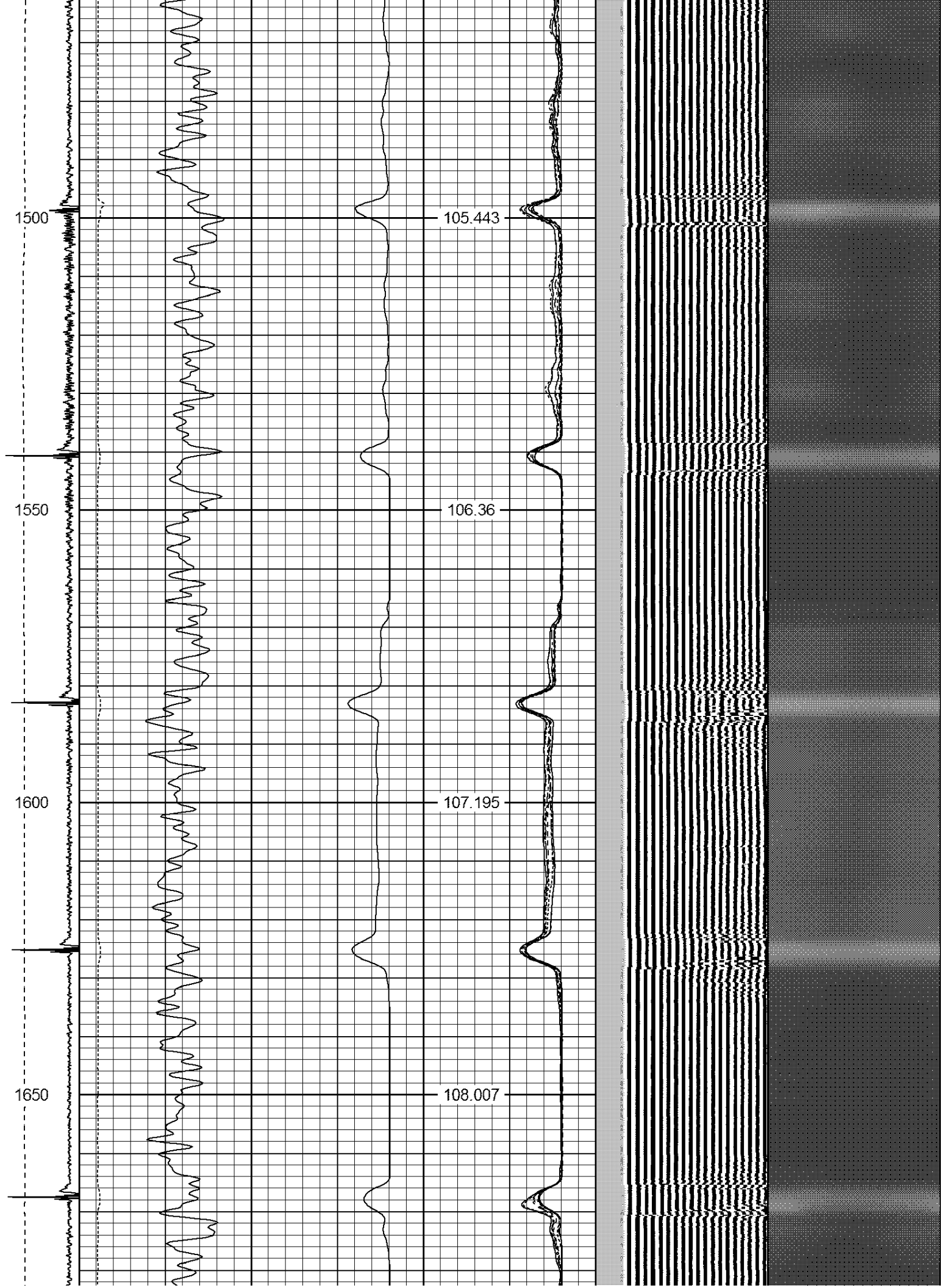




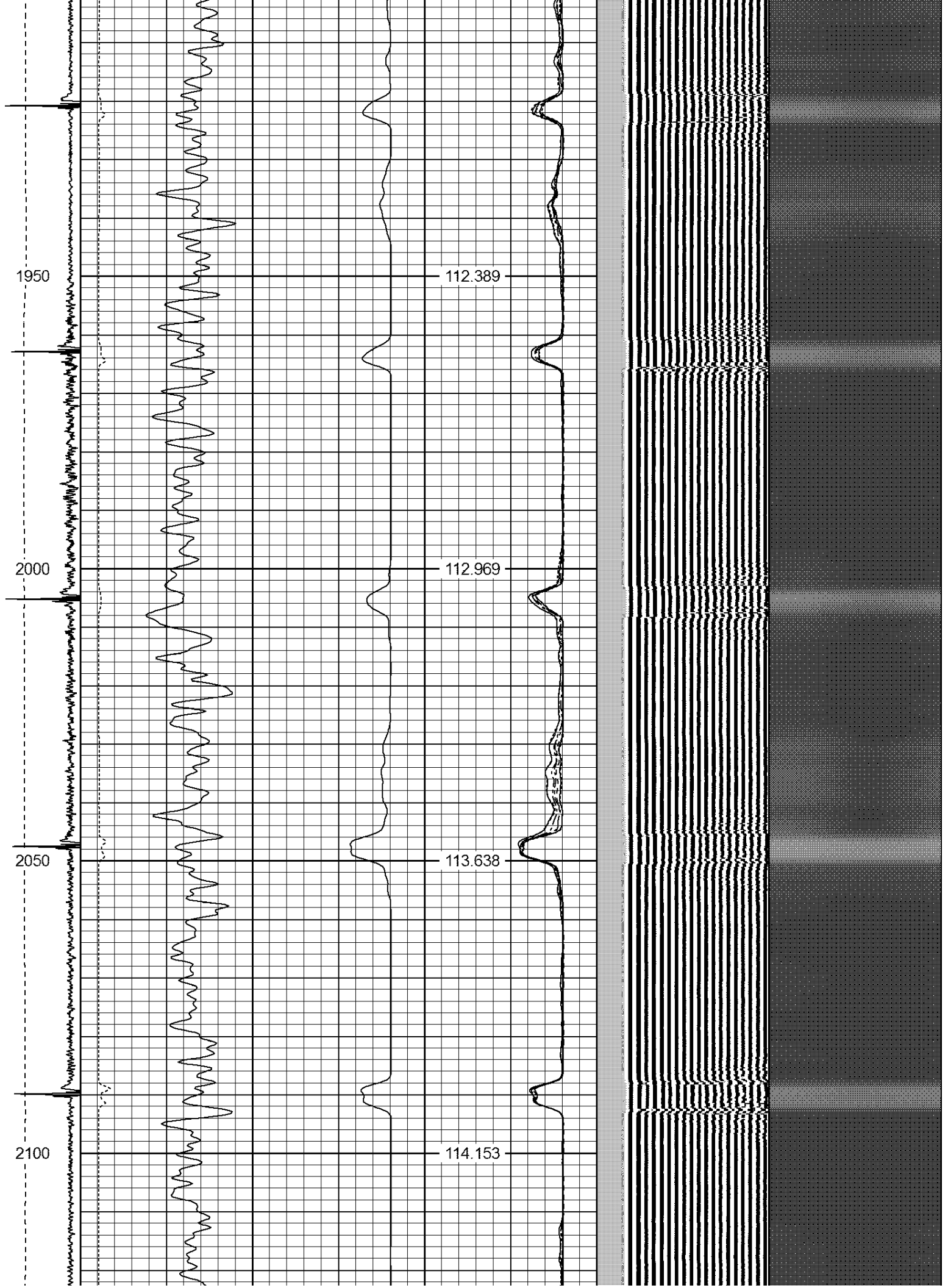












2150

114.71

2200

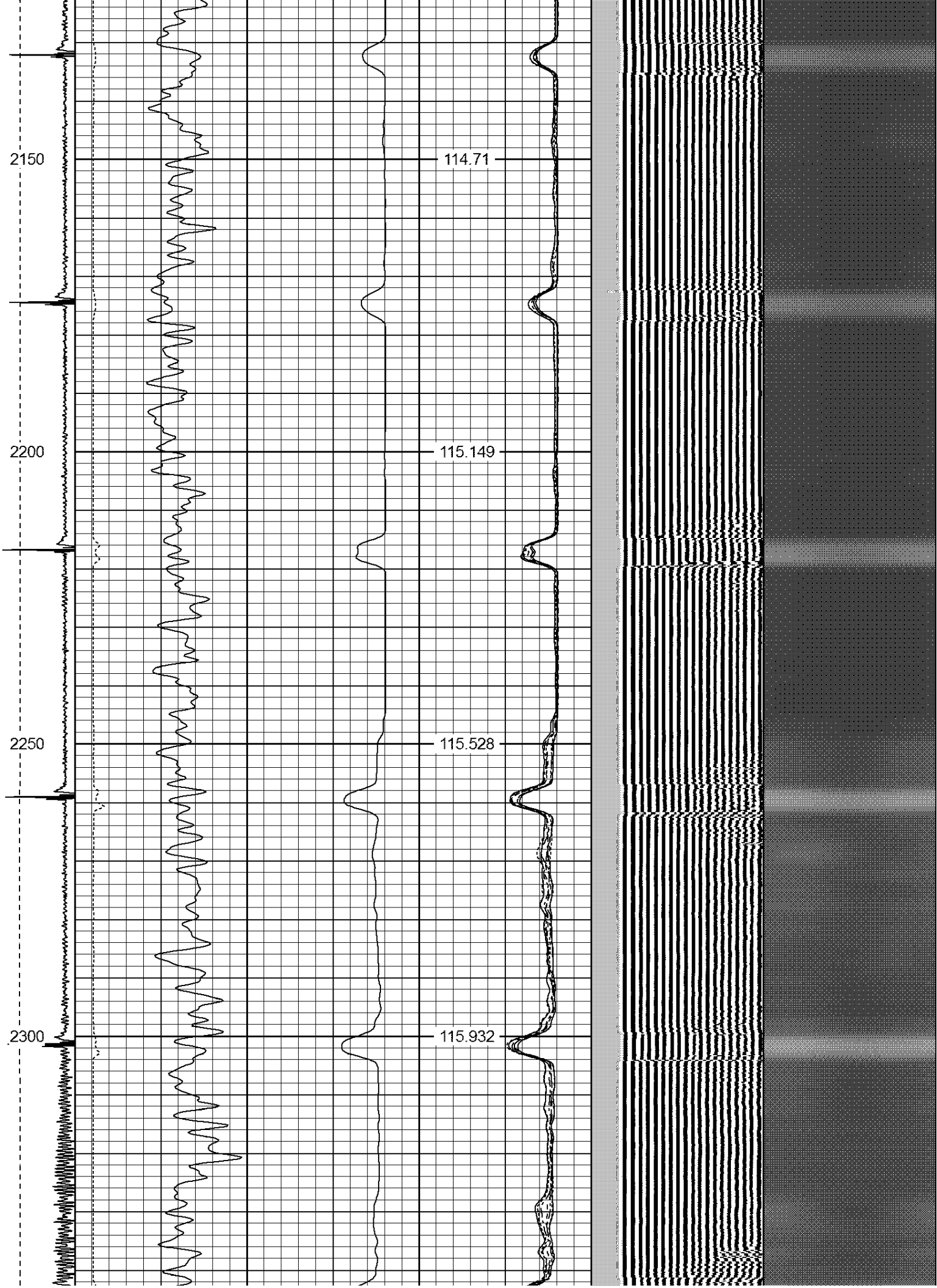
115.149

2250

115.528

2300

115.932



2350

116.24

2400

116.606

2450

116.936

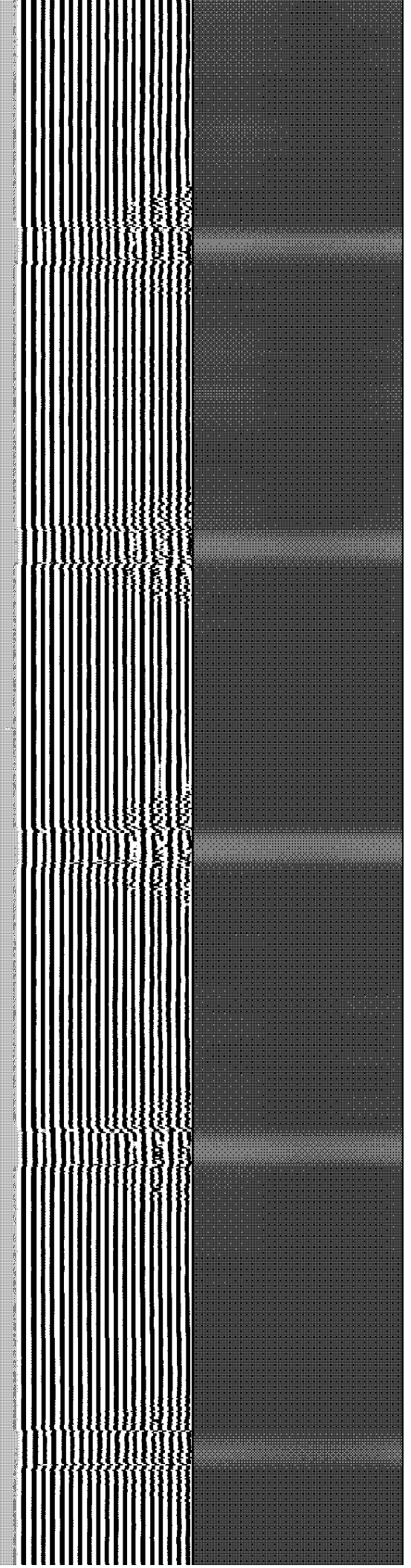
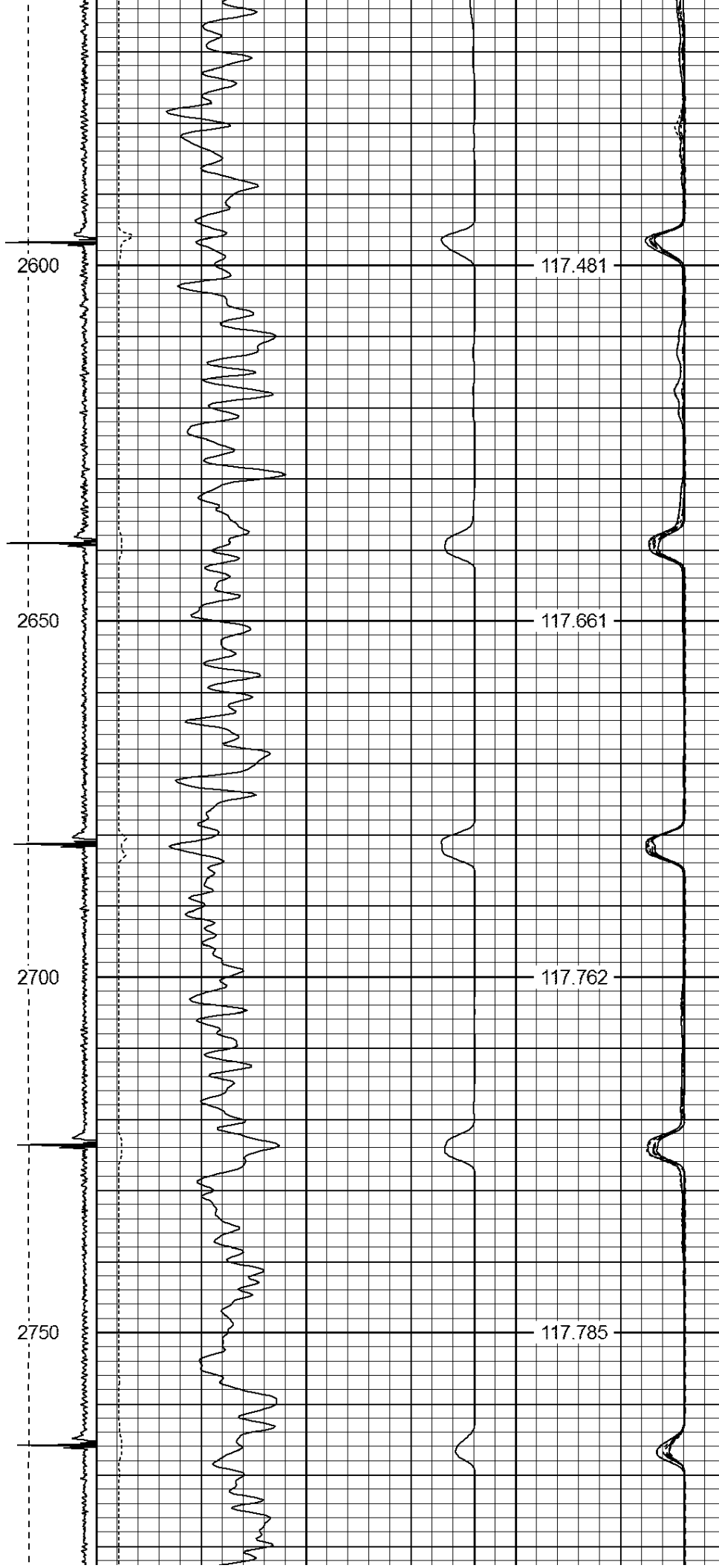
2500

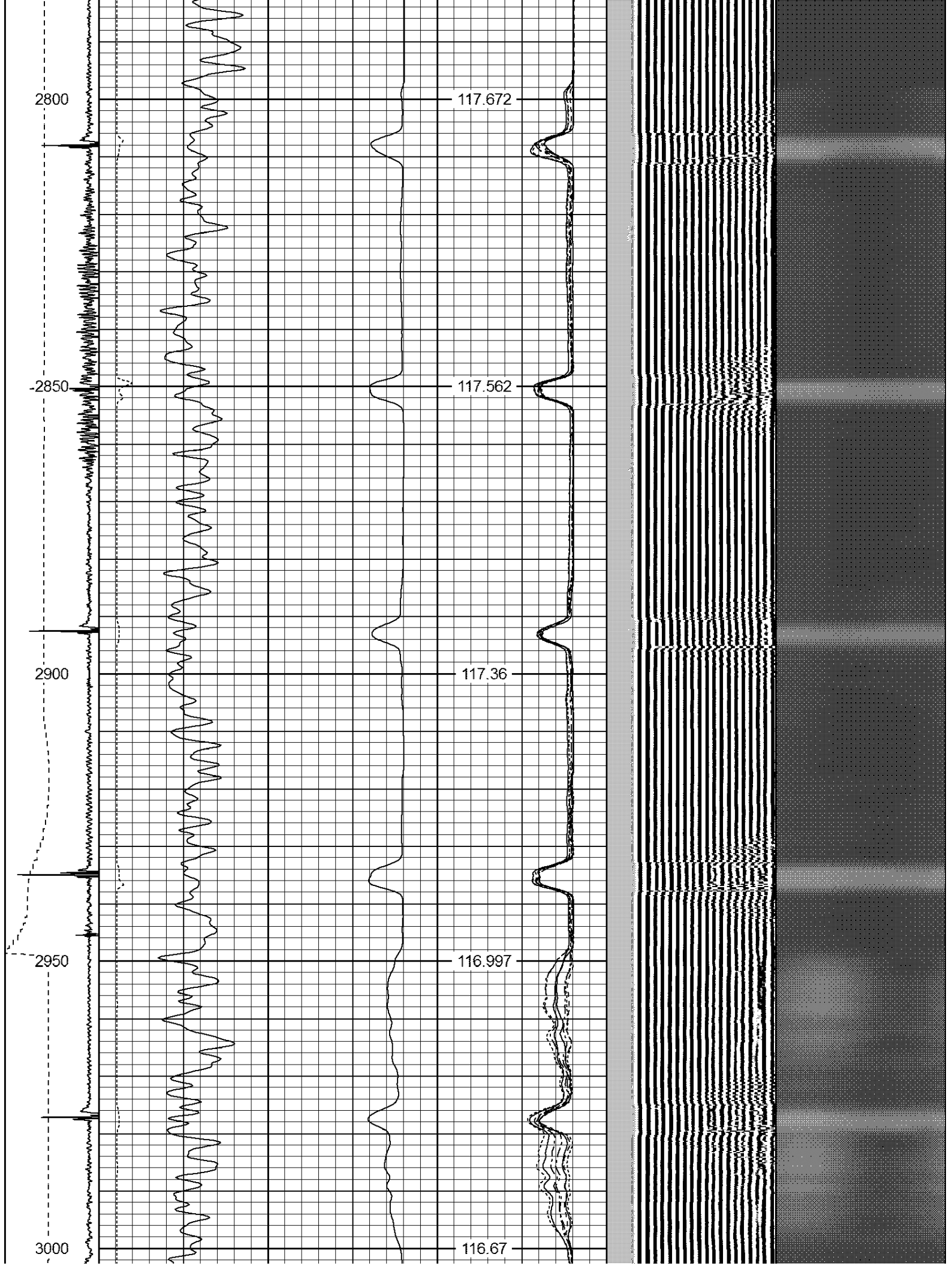
117.174

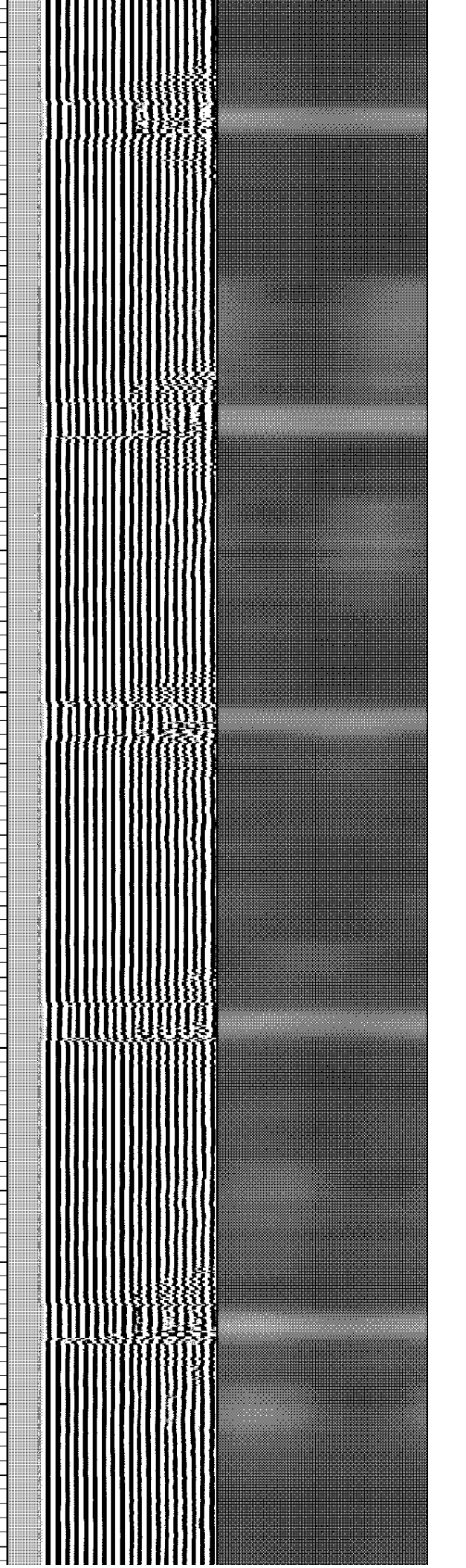
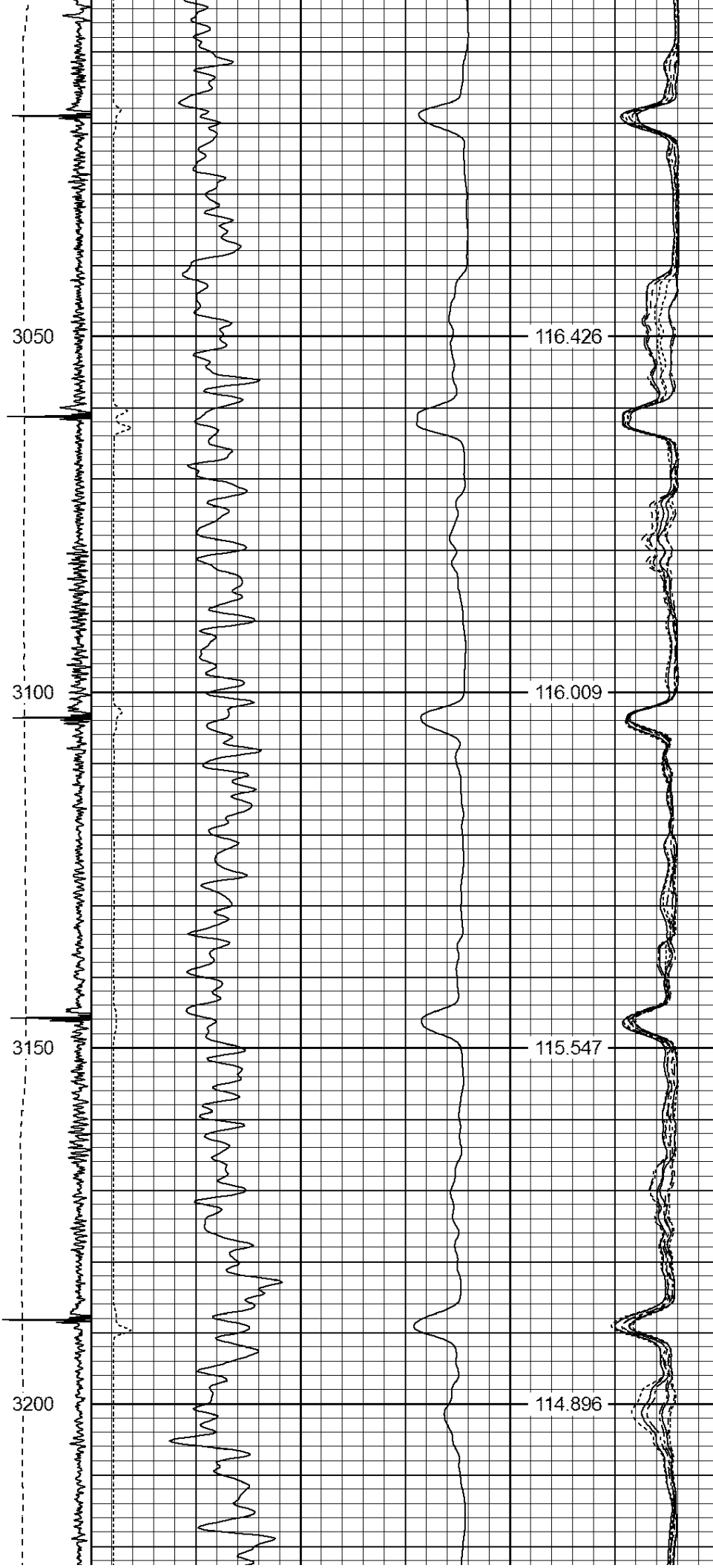
2550

117.444











3450

110.642

3500

109.324

3550

107.906

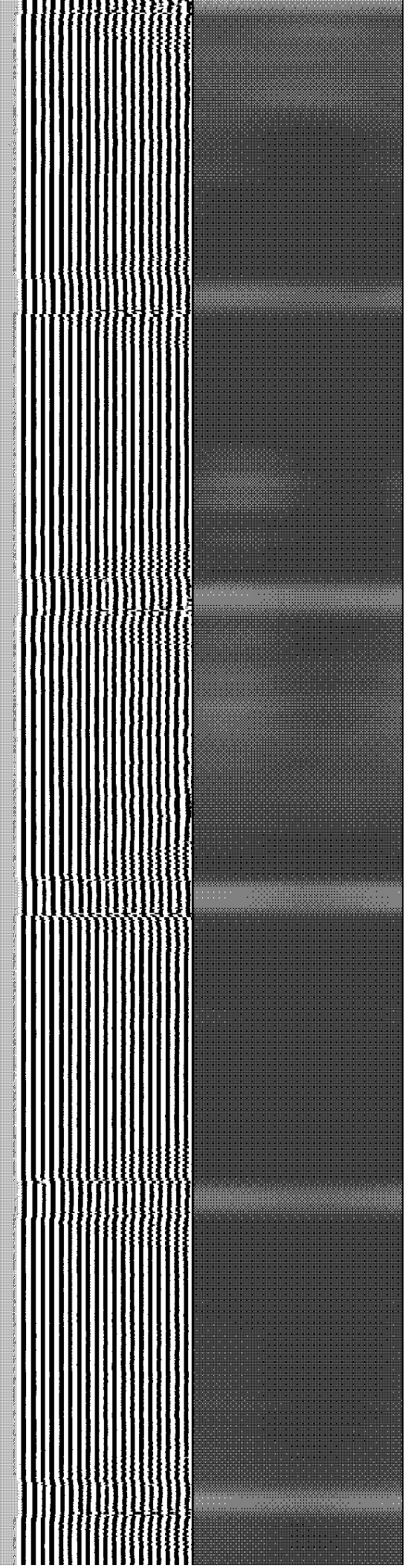
3600

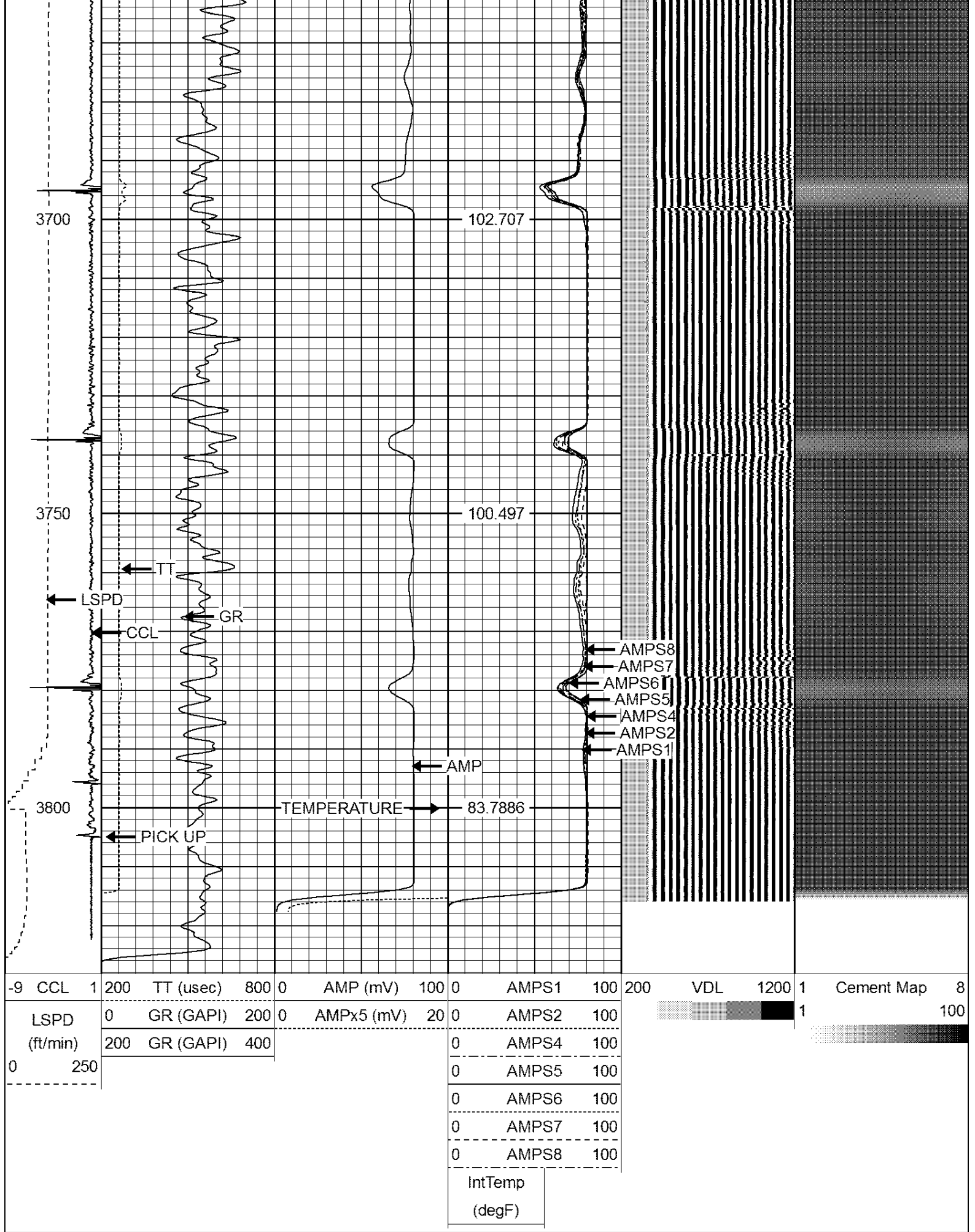
106.491

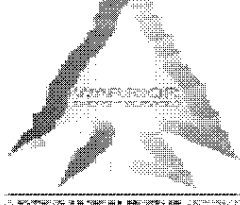
3650

104.801

FREE PIPE CALIBRATION
81 MA IN 4.5"







WARRIOR

ENERGY SERVICES

Company KERR MCGEE OIL AND GAS
Well MAYER 14-22A
Field WATTENBERG
County WELD
State CO