

RADIAL CEMENT BOND LOG

SCALE 5" = 100'

Company		CHEVRON		Company		CHEVRON	
Well		BEEZLEY 2-22		Well		BEEZLEY 2-22	
Field		RANGELY		Field		RANGELY	
County		RIO BLANCO		County		RIO BLANCO	
State		CO		State		CO	
Permanent Datum Log Measured From Drilling Measured From				Sec: 22 Twp: 2N Rge: 103W GROUND LEVEL Elevation 5597' KB , 9 Ft. above perm. datum KB			
Date @ Time Logged Run No. Depth - Driller Depth - Logger Bottom - Logged Interval Top - Log Interval Max. Recorded Temp. CEMENTING DATA				30 JAN 2015 @ 13:00 ONE 6700' 1878' 1870' 9' 115° F Surface String			
Date / Time Cemented Primary / Squeeze Expected Compressive Strength Cement Volume Cement Type / Weight Formulation Mud Type / Mud Wgt.				Type Fluid in Hole Density of Fluid Fluid Level Cement Top Est. Logged Equipment / Location Recorded by Witnessed by Protection String Production String String			
Run Number Bit From To Size Weight From To				Casing & Tubing Record 16" 55 10.75" 40.5 7" 23 SURFACE SURFACE SURFACE SURFACE SURFACE SURFACE			

<<< Fold Here >>>

HALLIBURTON DOES NOT GUARANTEE THE ACCURACY OF ANY INTERPRETATION OF THE LOG DATA, CONVERSION OF LOG DATA TO PHYSICAL ROCK PARAMETERS OR RECOMMENDATIONS WHICH MAY BE GIVEN BY HALLIBURTON PERSONNEL OR WHICH APPEAR ON THE LOG OR IN ANY OTHER FORM. ANY USER OF SUCH DATA, INTERPRETATIONS, CONVERSIONS, OR RECOMMENDATIONS AGREES THAT HALLIBURTON IS NOT RESPONSIBLE EXCEPT WHERE DUE TO GROSS NEGLIGENCE OR WILLFUL MISCONDUCT, FOR ANY LOSS, DAMAGES, OR EXPENSES RESULTING FROM THE USE THEREOF.

Comments

THORIUM BLANKET VALUE: 433

YOUR CREW TODAY: ERIC COMBS, ROBERT HOEY, ERIK HOUGH, NICK BROWN

THANK YOU FOR CHOOSING HALLIBURTON ENERGY SERVICES!!!

Service Ticket No.	902094057	API No.	05-103-05742	PGM Ver	WARRIOR 8.0
The Well Name, Location, Borehole Description, and / or Cementing Data Furnished by Client					
EQUIPMENT DATA					
TELEMETRY		CEMENT BOND TOOL			
Run No.	ONE	Run No.	ONE	Run No.	
Serial No.	10000286	Serial No.	11002212	Serial No.	
Model No.	TTTCU-002	Model No.	SONDEX RBT	Model No.	
Diameter	1 11/16"	Diameter	3 1/8"	Diameter	
LOGGING DATA					
General Data					
Pass	Depths		Well Head	Speed	Logging Run Comments
No	From	To	Pressure	Ft/Min	



No.	From	To	Pressure	Temp				
ALL PASSES	9'	1878'	0					
	GAMMA RAY		AMPLITUDE					
Pass	Scale		Scale		Scale		Scale	
No.	L	R	L	R	L	R	L	L
ALL PASSES	0	200	0	100				
DIRECTIONAL INFORMATION								
Maximum Deviation			deg. @		KOP			

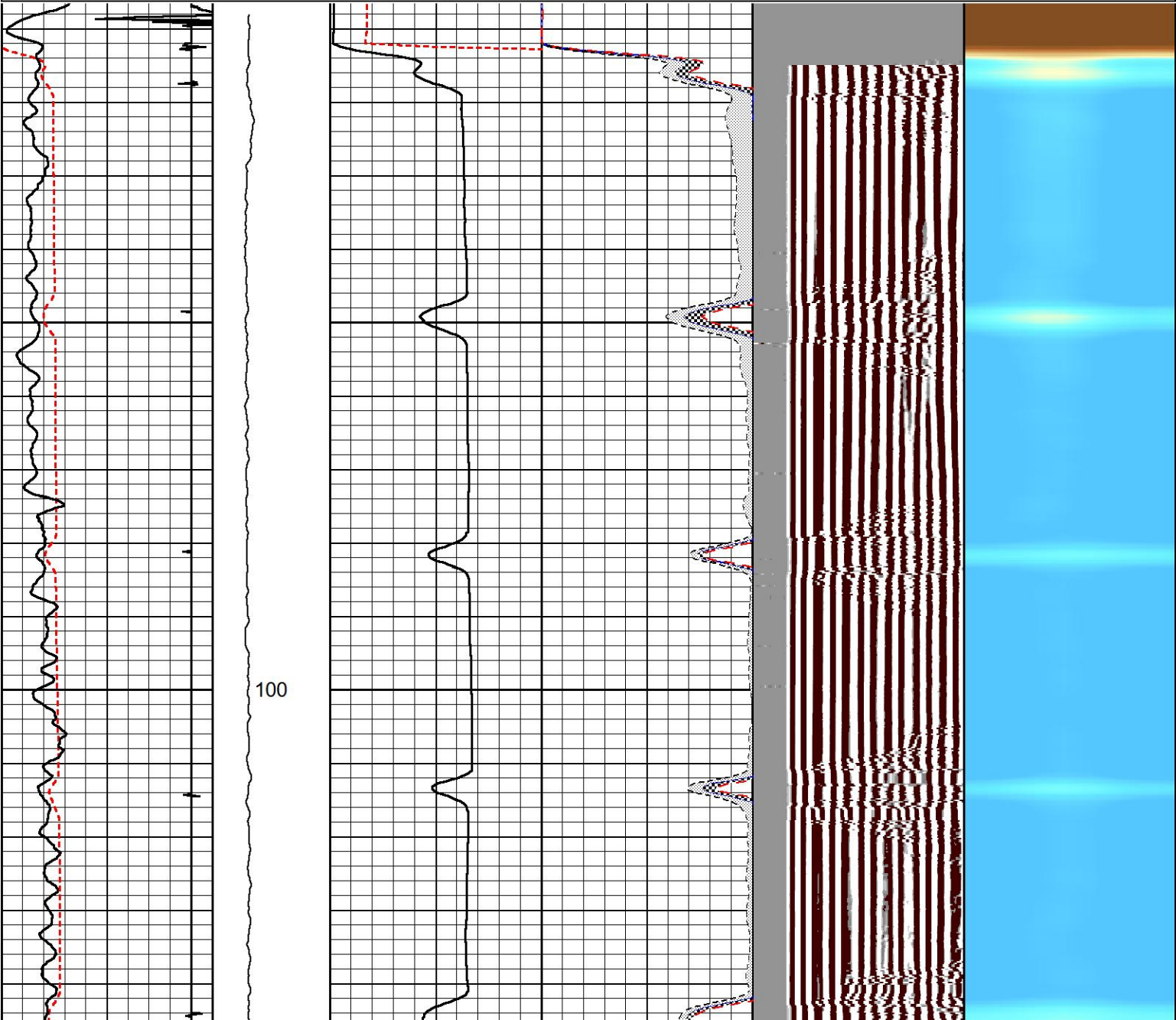
MAIN PASS

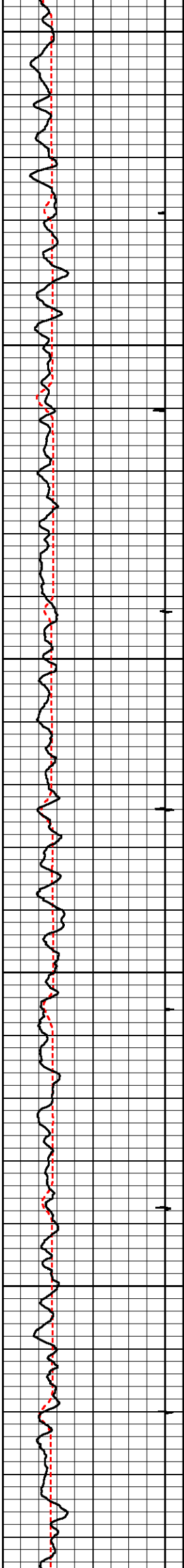
HALLIBURTON

SCALE 5" = 100'

Database File		c:\users\h102095\desktop\chevron beezley 2-22\beezley_2_22.db													
Dataset Pathname		RBT/MAIN													
Presentation Format		radial													
Dataset Creation		Fri Jan 30 15:21:17 2015													
Charted by		Depth in Feet scaled 1:240													

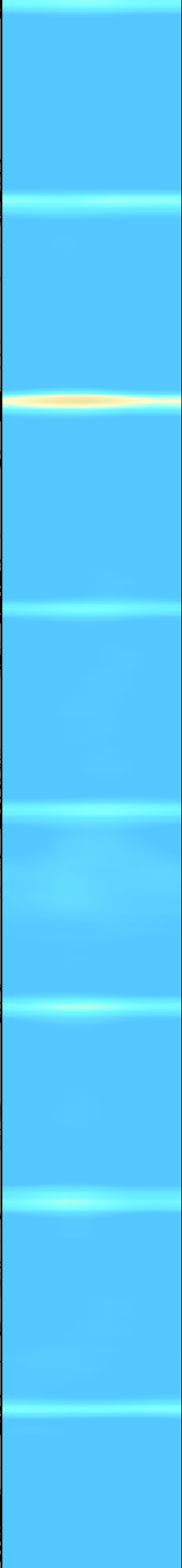
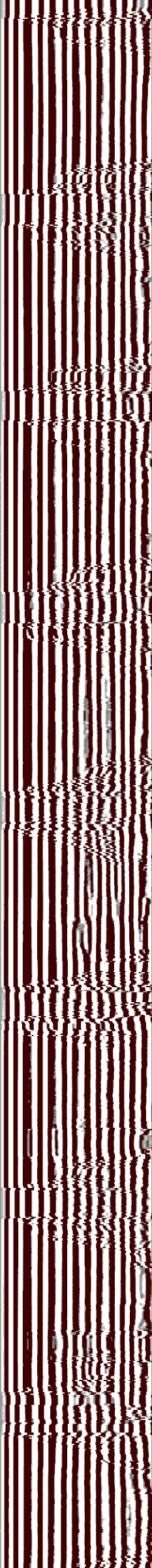
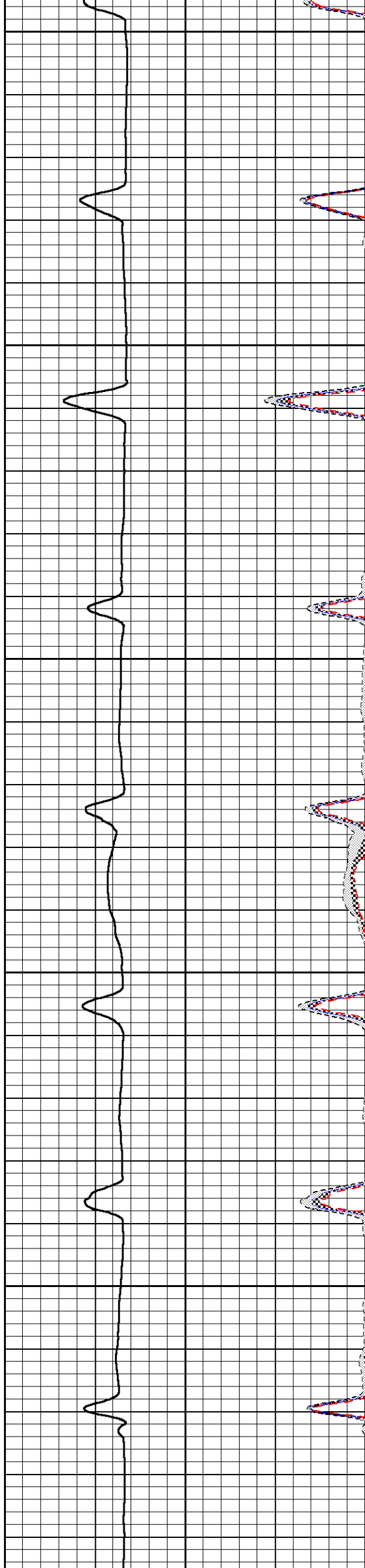
280	TT (usec)	180	TENSION	0	AMP (mV)	100	0	AMPAVG	100	200	MSG	1200	1	SECTORS	8
-900	CCL	100	0 (lb/1000)	0	AMPx5 (mV)	10	0	AMPMAX	100				1		100
0	GR (GAPI)	150					0	AMPMIN	100						

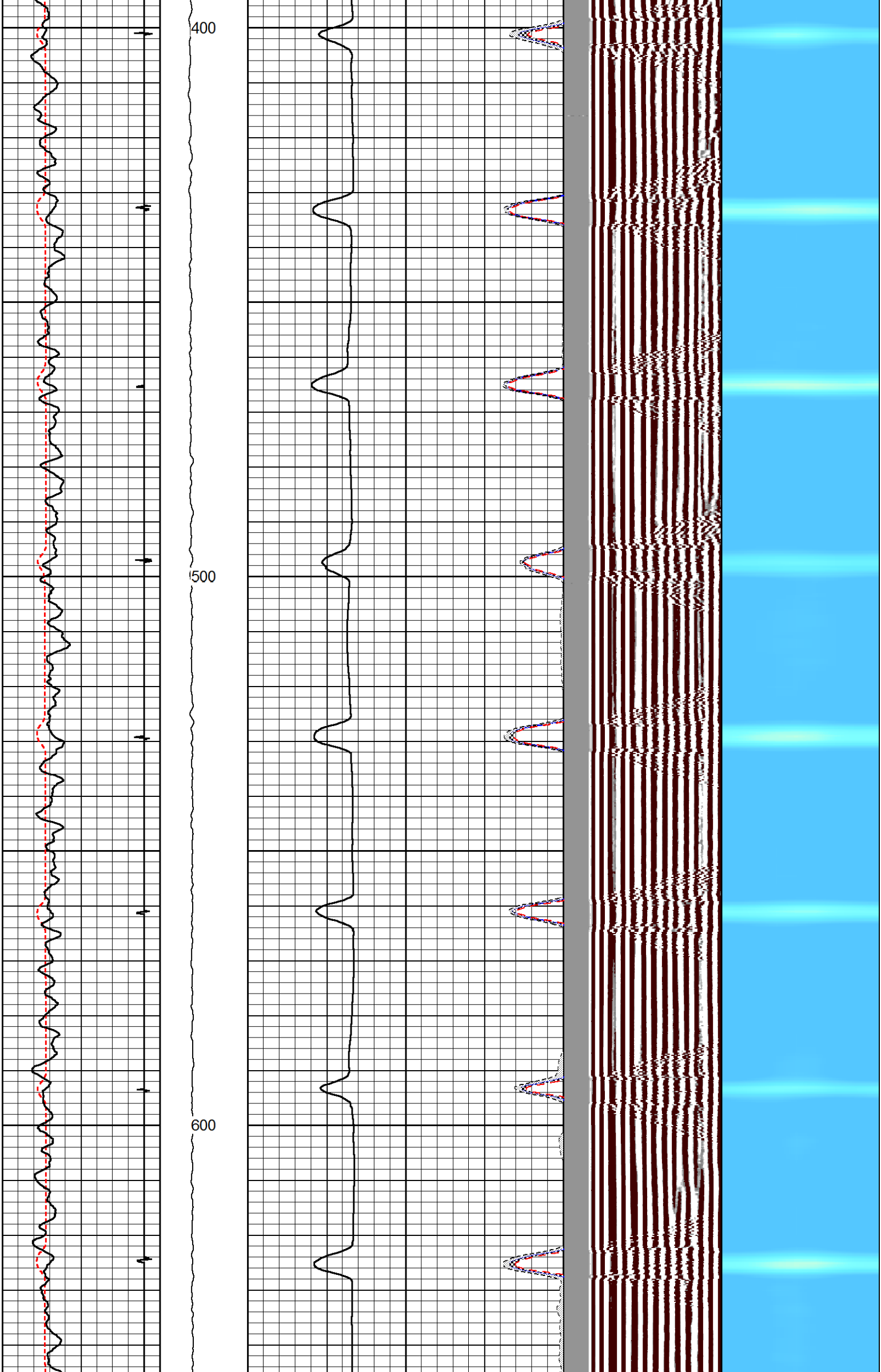


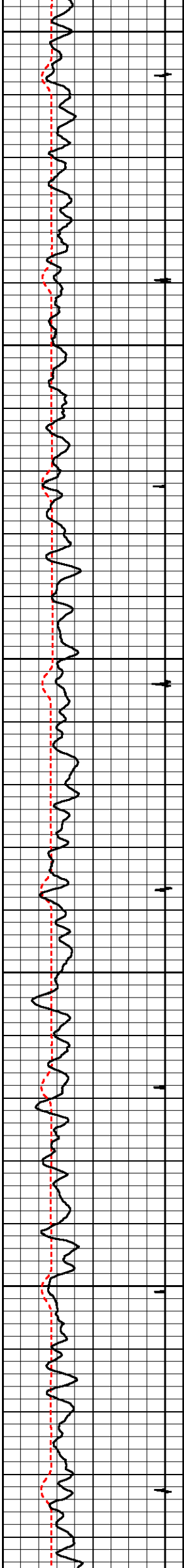


200

300

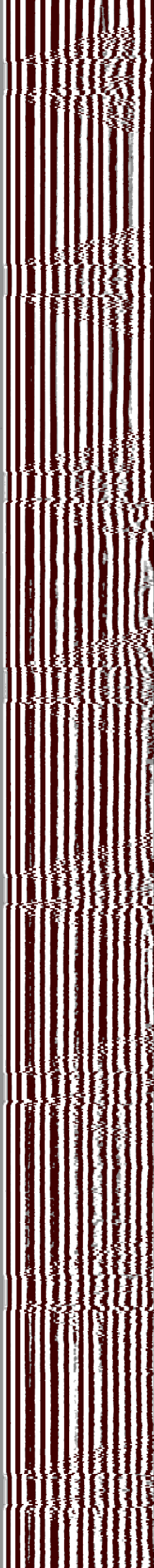
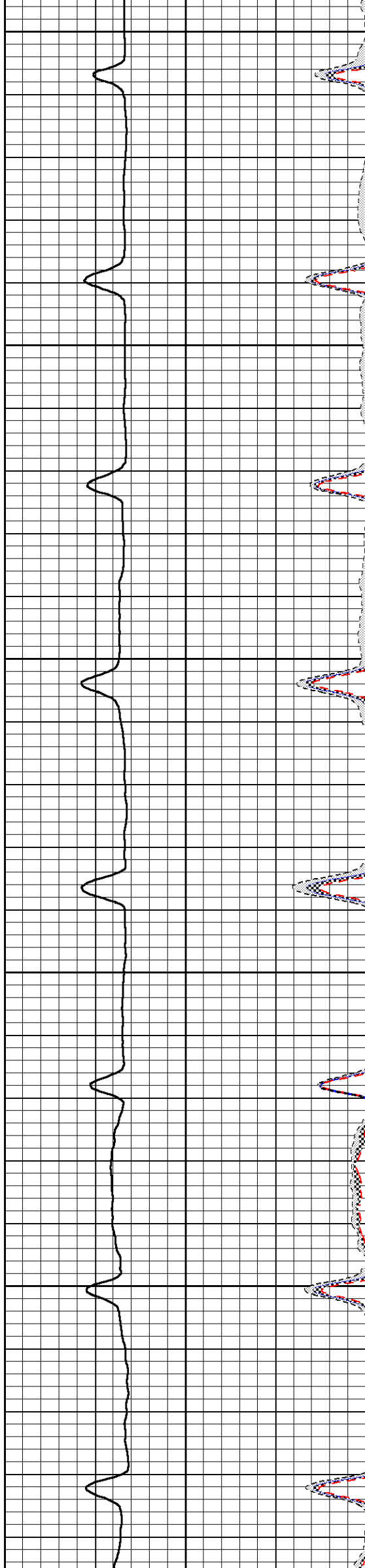


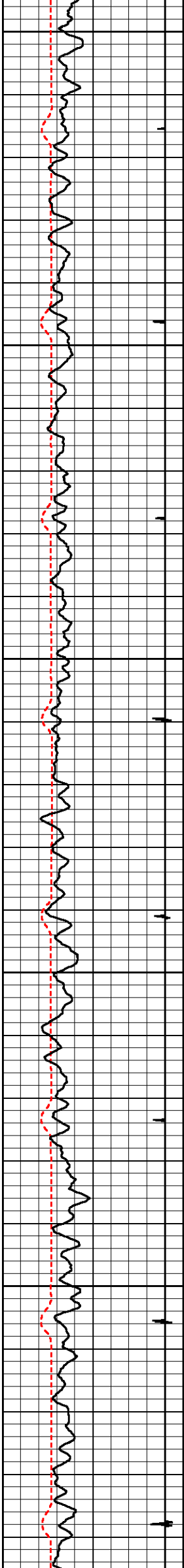




700

800

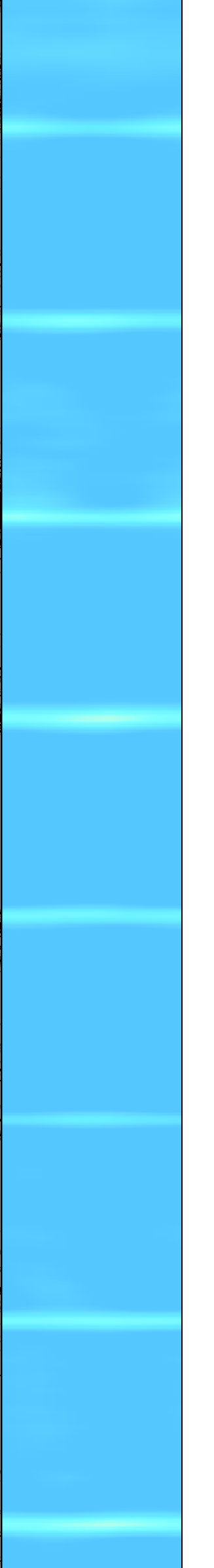
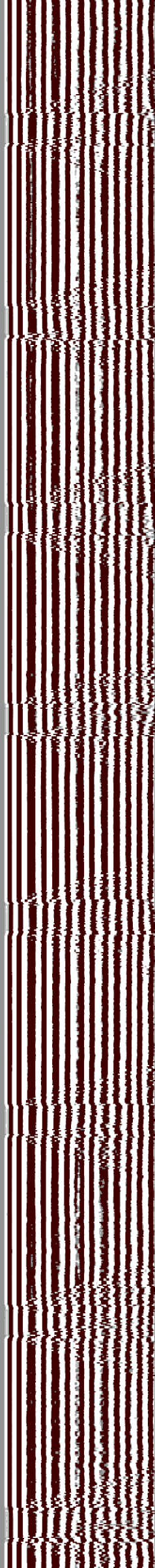
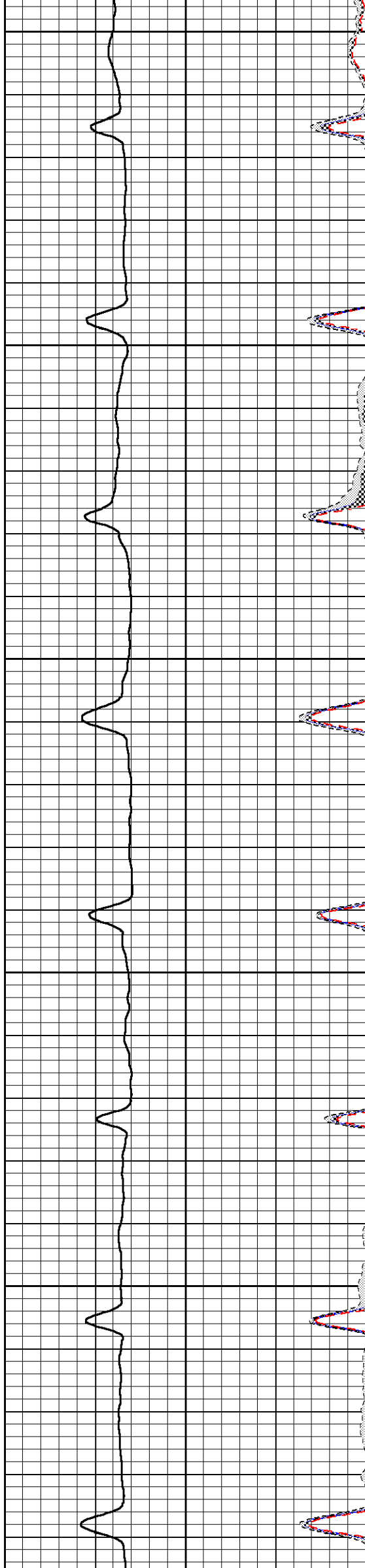


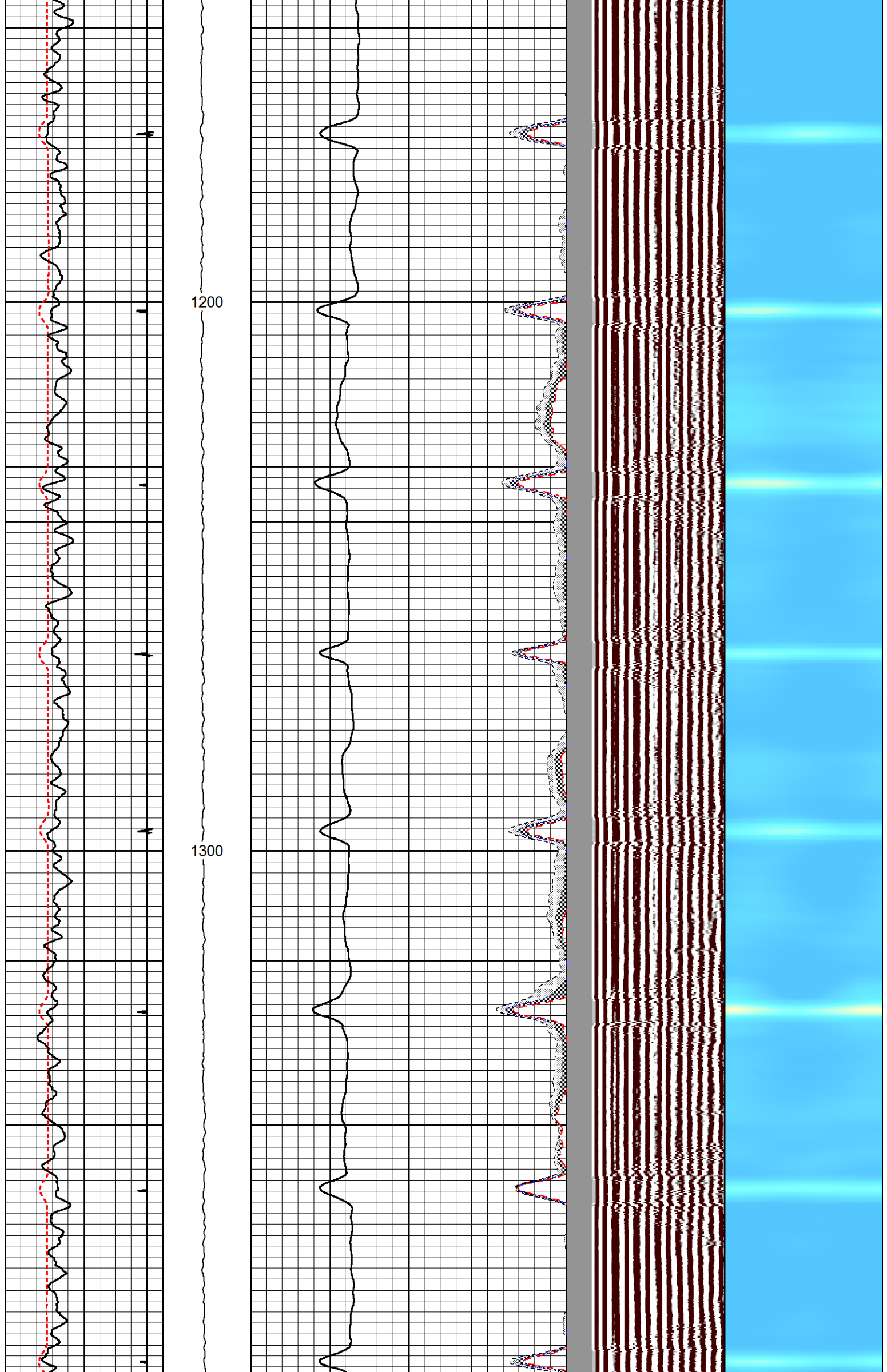


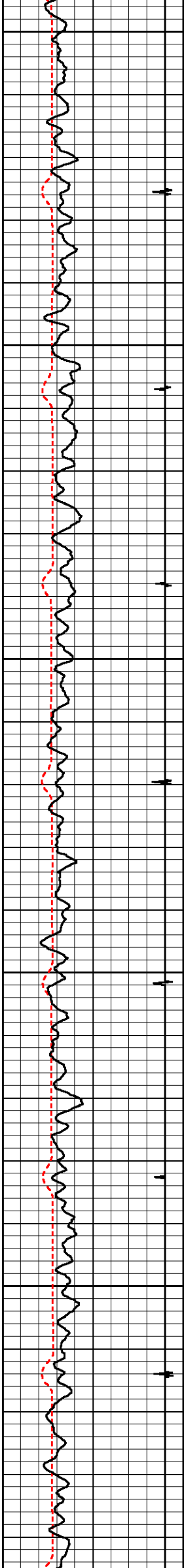
900

1000

1100



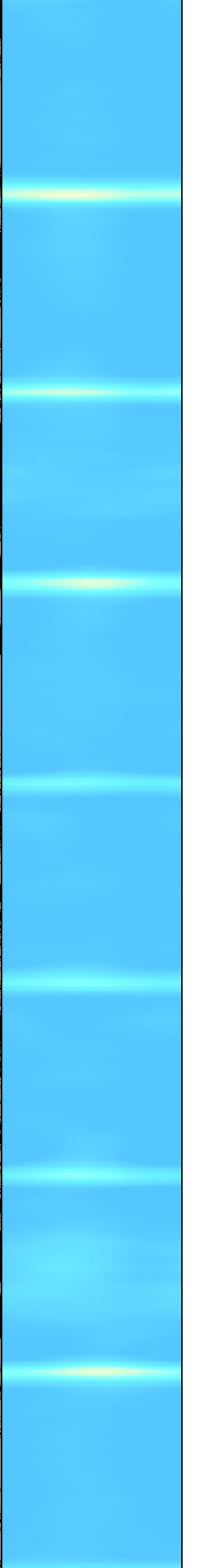
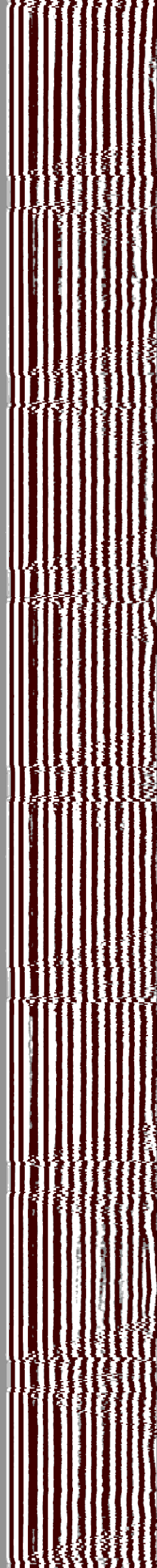
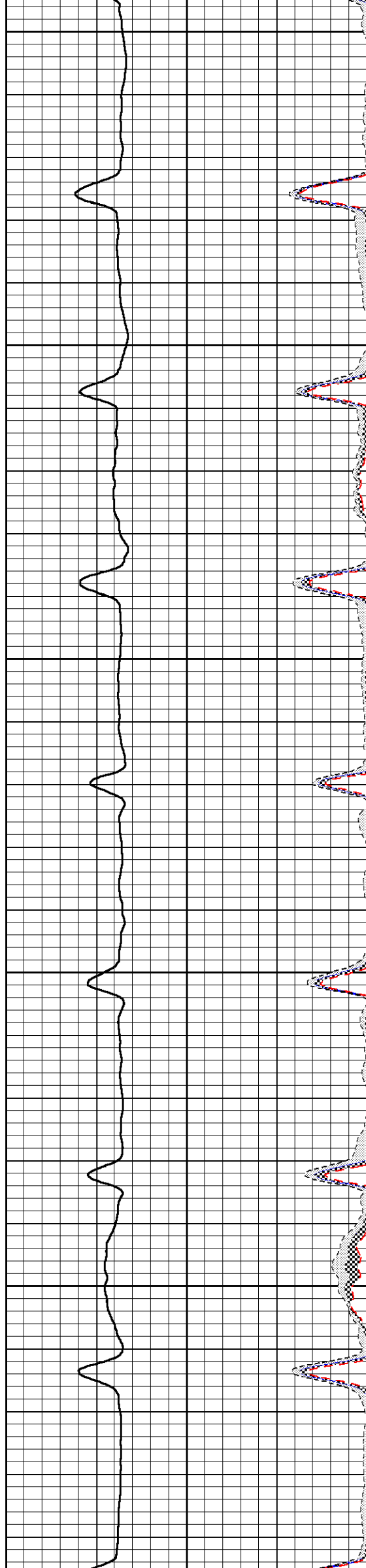


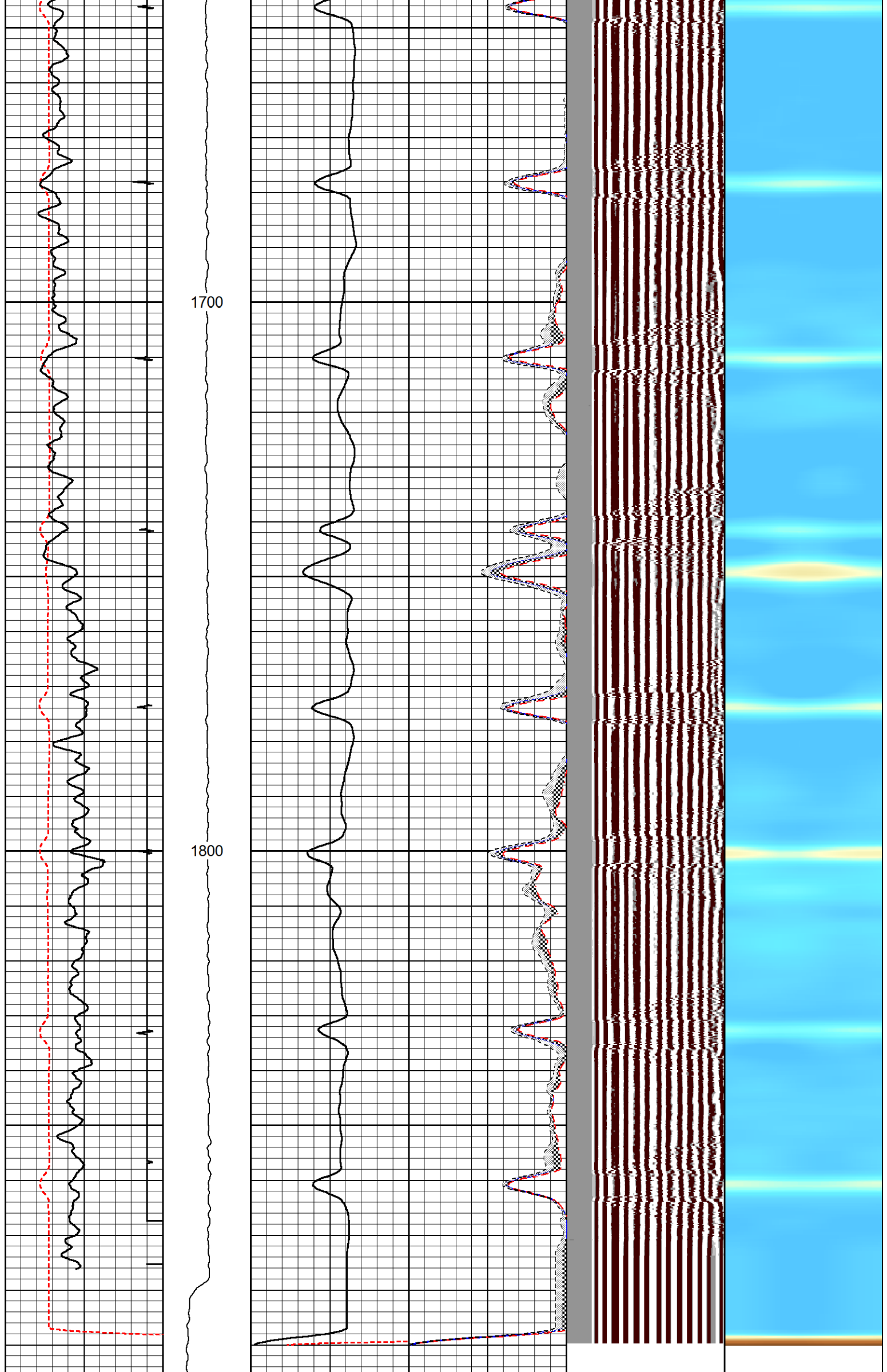


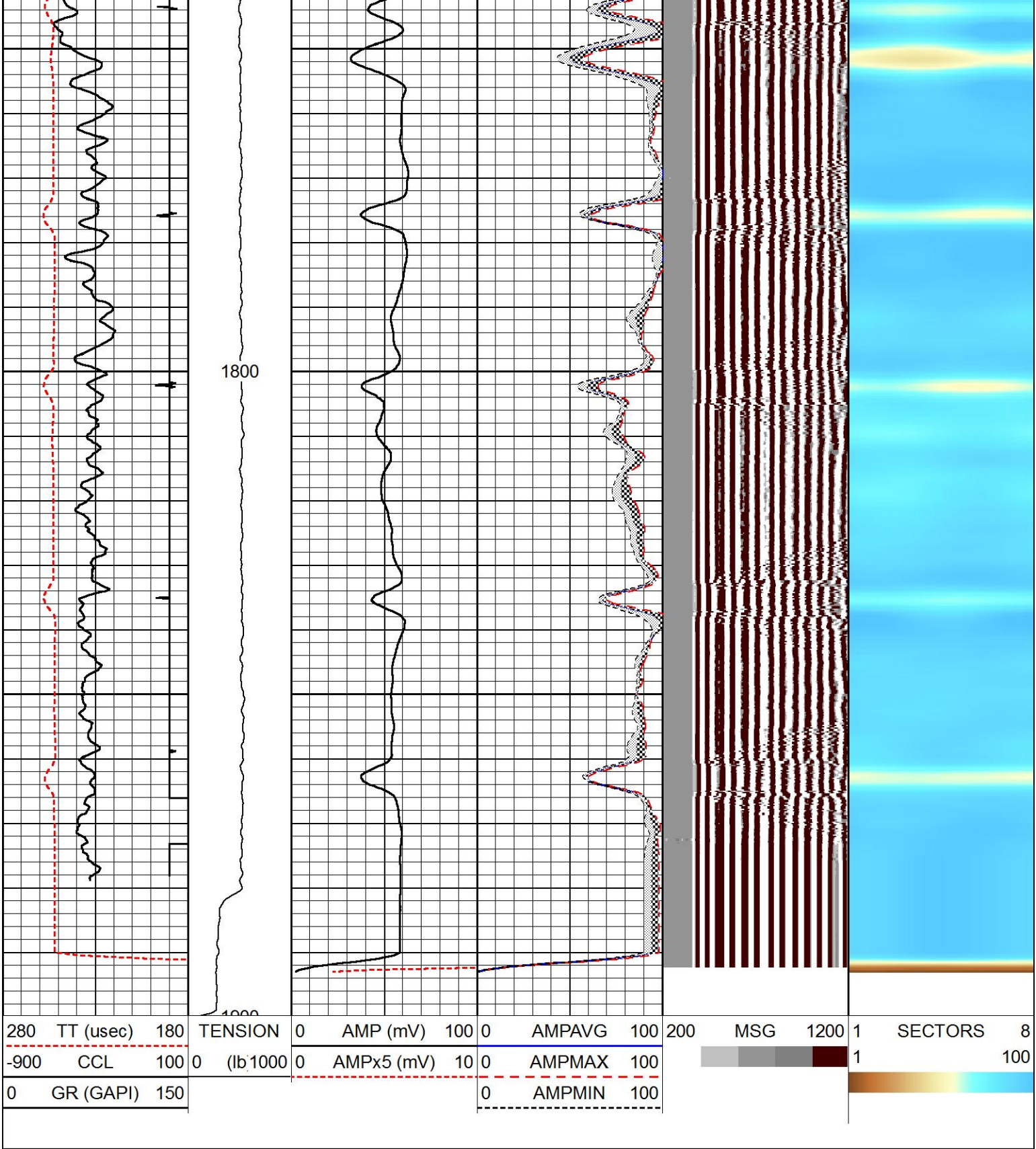
1400

1500

1600







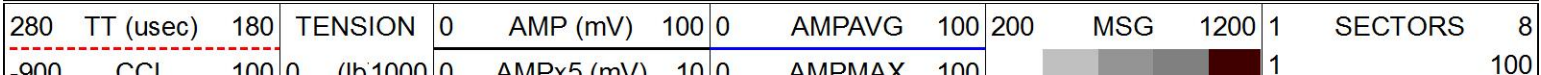
REPEAT PASS

SCALE 5" = 100'

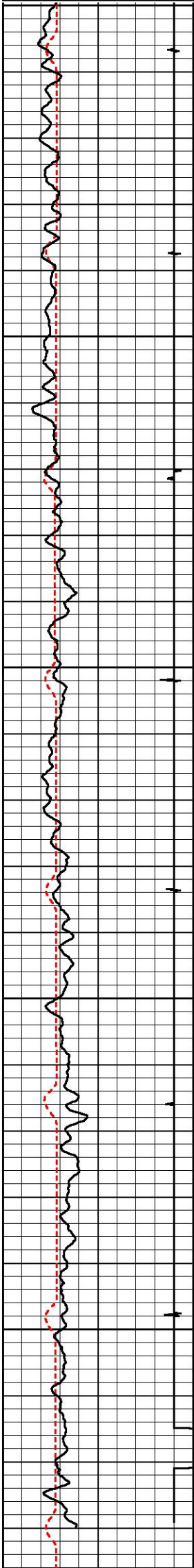
FREE PIPE

SCALE 5" = 100'

Database File c:\users\h102095\desktop\chevron beezley 2-22\beezley_2_22.db
Dataset Pathname RBT/FREE
Presentation Format radial
Dataset Creation Fri Jan 30 14:57:35 2015
Charted by Depth in Feet scaled 1:240

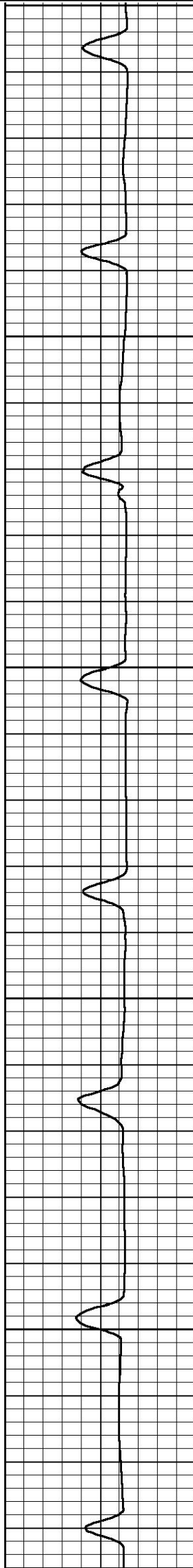


500 000 100 0
0 GR (GAPI) 150

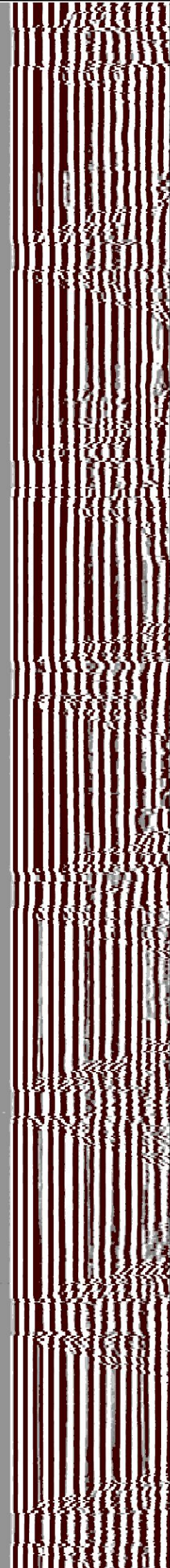
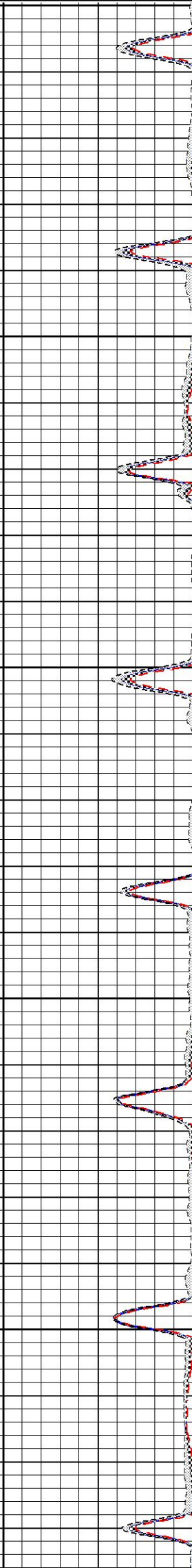


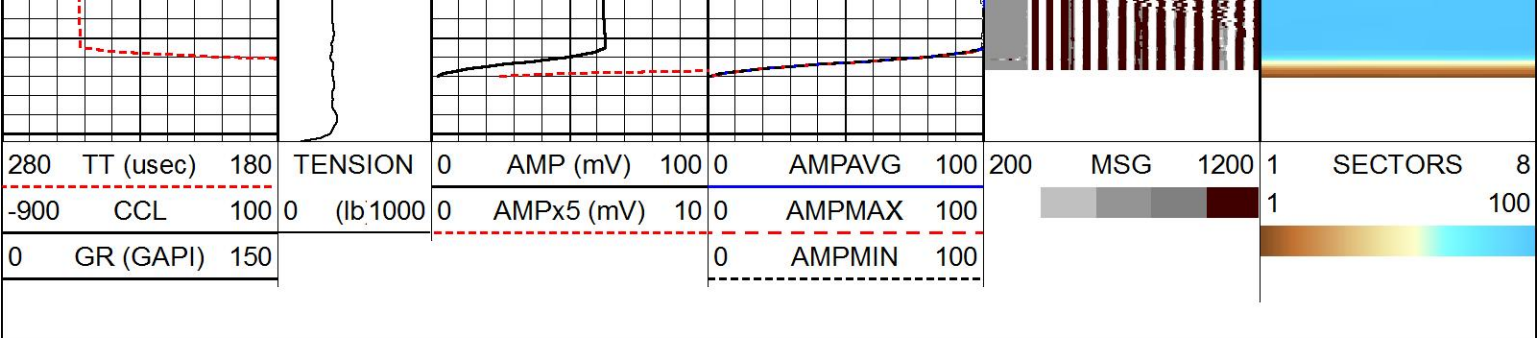
300
400
500

0 AMI X5 (INV) 10 0



0 AMI MAX 100
0 AMPMIN 100





HALLIBURTON

FREE PIPE

SCALE 5" = 100'

Log Variables

DatabaseC:\Users\H102095\Desktop\CHEVRON BEEZLEY 2-22\beezley_2_22.db
Dataset field/well/RBT/MAIN

Top - Bottom

BHTEMP_Src	BHSAL2	BHSAL1	POROS2	POROS1	LTH	UHSGC	RHOFC
1	0	1	0	1	Sandstone	1	0.25
SO in 0	BORSAL kppm 150	CASED? Yes	PPT usec 0	CASEWGHT lb/ft 23	MAXAMPL mV 0	MINAMPL mV 1	MINATTN db/ft 0.8
SRFTEMP degF 0	MudWgt lb/gal 9.5	CASETHCK in 0	CASEOD in 7	PERFS 0	TDEPTH ft 0	BOTTEMP degF 100	BITSIZE in 10

Calibration Report

Database FileC:\Users\H102095\Desktop\CHEVRON BEEZLEY 2-22\beezley_2_22.db

Dataset PathnameRBT/MAIN

Dataset CreationFri Jan 30 15:21:17 2015

Segmented Cement Bond Log Calibration Report

Serial Number:11002212

Tool Model:004

Calibration Casing Diameter:7.000in

Calibration Depth:550.760ft

Master Calibration, performed Fri Jan 30 14:57:28 2015:

	Raw (v)		Calibrated (mv)		Results	
	Zero	Cal	Zero	Cal	Gain	Offset
3FT	0.010	0.647	2.000	62.200	94.471	1.077
5FT	0.005	1.120	2.000	62.200	53.992	1.748
S1	0.009	0.676	0.000	100.000	149.966	-1.367
S2	0.005	0.624	0.000	100.000	161.562	-0.789
S3	0.007	0.593	0.000	100.000	170.820	-1.251
S4	0.008	0.587	0.000	100.000	172.500	-1.320
S5	0.006	0.621	0.000	100.000	162.695	-1.027
S6	0.005	0.660	0.000	100.000	152.754	-0.755
S7	0.008	0.703	0.000	100.000	143.924	-1.147
S8	0.009	0.712	0.000	100.000	142.346	-1.289

Calibration Report


Serial Number:11002212

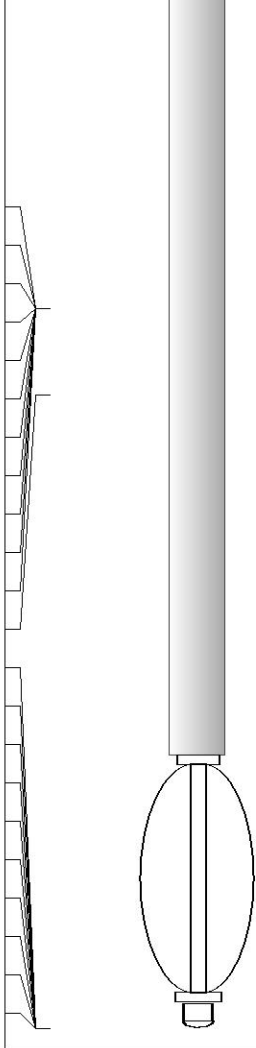
	Tool Model: Performed:	004
Low:	Reference (degF)	Reading ()
High:	0.000	0.000
	1.000	1.000
	Gain = 1.000	Offset = 0.000

Gamma Ray Calibration Report

Type / Serial:	002 / 10000286
----------------	----------------

SHOP CALIBRATION		Fri Jan 30 14:29:24 2015			
	Counts/Sec.	Gain	Offset	Jig	Units
Background	38.5				cps
Calibrator	319.1				cps
		1.5429			GAPI/cps
PRIMARY VERIFICATION					
Background	61.3				cps
Calibrator	491.5				cps
Difference				430.1	GAPI
BEFORE SURVEY VERIFICATION					
Background	0.0				cps
Calibrator	0.0				cps
Difference				0.0	GAPI
AFTER SURVEY VERIFICATION					
Background	0.0				cps
Calibrator	0.0				cps
Difference				0.0	GAPI

Sensor	Offset (ft)	Schematic	Description	Length (ft)	O.D. (in)	Weight (lb)
CCL	21.41		STNDCH-STND_CH 1.4375 IN CABLE HEAD	1.50	1.44	1.00
GR	19.15		TTTCU-002 (10000286) Through Tubing Telemetry Cartridge - Ultrawire	7.65	1.69	100.00
			AUH-001 (215383) Adaptor Ultrawire/Halliburton	0.38	1.69	3.00
			CENT-CBLINLINE	2.83	3.25	

CBLROT	8.27		RBT-004 (11002212) Radial Bond Tool (UW 3 1/8) 20K Rated	9.48	3.13	140.00					
CBLTEMP	8.27										
WVFS8	8.27										
WVFS7	8.27										
WVFS6	8.27										
WVFS5	8.27										
WVFS4	8.27										
WVFS3	8.27										
WVFS2	8.27										
WVFS1	8.27										
WVF3FT	8.27										
WVF5FT	7.27										
HVOLTX	0.00										
ITEMPX	0.00										
TSTAMP	0.00										
XHUCUR4	0.00										
XHUCUR3	0.00										
XHUCUR2	0.00										
XHUCUR1	0.00										
XHUSTAT	0.00										
XHUTEMP	0.00										
LLMTEN	0.00										
Dataset: beezley_2_22.db: field/well/RBT/MAIN											
Total length: 24.98 ft											
Total weight: 245.50 lb											
O.D.: 3.25 in											

Company	CHEVRON				
Well	BEEZLEY 2-22				
Field	RANGELY				
County	RIO BLANCO		State	CO	
HALLIBURTON	RADIAL CEMENT BOND LOG				
	SCALE 5" = 100'				