

The Road to Excellence Starts with Safety

Sold To #: 338668	Ship To #: 2787561	Quote #: 0022023184	Sales Order #: 0902248472
Customer: CHEVRON - MID-CONTINENT EBIZ		Customer Rep:	
Well Name: Beezly	Well #: 2-22	API/UWI #:	
Field:	City (SAP): RANGELY	County/Parish: RIO BLANCO	State: COLORADO
Legal Description:			
Contractor:		Rig/Platform Name/Num: Workover	
Job BOM: 14099			
Well Type: GAS			
Sales Person: HALAMERICA\HX20741		Srv Supervisor: Hunter Lee	
Job			

Formation Name	
Formation Depth (MD)	Top 0 Bottom 1822
Form Type	BHST
Job depth MD	1822ft Job Depth TVD 1822
Water Depth	Wk Ht Above Floor
Perforation Depth (MD)	From 1635 ft To 1636 ft

Well Data										
Description	New / Used	Size in	ID in	Weight lbm/ft	Thread	Grade	Top MD ft	Bottom MD ft	Top TVD ft	Bottom TVD ft
Open Hole Section			10.75				0	1635	0	0
Casing		10.75	10.05	40.5			0	1822		0
Casing		7	6.366	23			0	1822		0

Tools and Accessories										
Type	Size in	Qty	Make	Depth ft		Type	Size in	Qty	Make	
Guide Shoe	7			1822		Top Plug	7		HES	
Float Shoe	7					Bottom Plug	7		HES	
Float Collar	7					SSR plug set	7		HES	
Insert Float	7					Plug Container	7		HES	
Stage Tool	7					Centralizers	7		HES	

Miscellaneous Materials										
Gelling Agt		Conc		Surfactant		Conc		Acid Type		Qty
Treatment Fld		Conc		Inhibitor		Conc		Sand Type		Size

Fluid Data										
Stage/Plug #: 1										
Fluid #	Stage Type	Fluid Name	Qty	Qty UoM	Mixing Density lbm/gal	Yield ft3/sack	Mix Fluid Gal	Rate bbl/min	Total Mix Fluid Gal	
1	Water Spacer	Water Spacer	10	bbl	8.34			3		
Fluid #	Stage Type	Fluid Name	Qty	Qty UoM	Mixing Density lbm/gal	Yield ft3/sack	Mix Fluid Gal	Rate bbl/min	Total Mix Fluid Gal	

2	Primary Cement	SQUEEZECEM (TM) SYSTEM	435	sack	15.8	1.16	5.08	4	5.08
4.91 Gal		FRESH WATER							
Fluid #	Stage Type	Fluid Name	Qty	Qty UoM	Mixing Density lbm/gal	Yield ft3/sack	Mix Fluid Gal	Rate bbl/mi n	Total Mix Fluid Gal
3	Water Displacement	Water Displacement	9	bbl	8.34			3	
Cement Left In Pipe		Amount	100 ft		Reason		Shoe Joint		
Comment									

HALLIBURTON

CHEVRON - MID-CONTINENT EBIZ
902248472
Case 1

3.1 Job Event Log

Type	Seq. No.	Activity	Graph Label	Date	Time	Source	Drive-Side Pump Pressure (psi)	Downhole Density (ppg)	Combined Pump Rate (bbl/min)	Comment
Event	1	Call Out	Call Out	3/20/2015	04:00:00	USER				ALL HES CREW CALLED AND ALLOCATED.
Event	2	Pre-Convoy Safety Meeting	Pre-Convoy Safety Meeting	3/20/2015	07:00:00	USER				CREW HELD MEETING DISCUSSING DIRECTIONS AND FOLLOWING DISTANCE.
Event	3	Arrive At Loc	Arrive At Loc	3/20/2015	08:00:00	USER				ALL HES CREW AND EQUIPMENT ARRIVED SAFELY.
Event	4	Pre-Rig Up Safety Meeting	Pre-Rig Up Safety Meeting	3/20/2015	08:30:00	USER				CREW HELD MEETING DISCUSSING PINCH POINTS AND SUSPENDED LOADS.
Event	5	Rig-Up Equipment	Rig-Up Equipment	3/20/2015	08:45:00	USER				LINES AND EQUIPMENT RIG UP STARTED.
Event	6	Pre-Job Safety Meeting	Pre-Job Safety Meeting	3/20/2015	11:00:00	USER				ALL HES AND RIG CREW HELD MEETING DISCUSSING JOB PROCEDURE AND PRESSURES.
Event	7	Rig-Up Completed	Rig-Up Completed	3/20/2015	11:30:00	USER	-1.00	8.28	0.00	ALL HES LINES AND EQUIPMENT RIGGES UP SAFELY.
Event	8	Start Job	Start Job	3/20/2015	11:46:11	COM5	1.00	8.21	0.00	PUMPING STARTED.
Event	9	Other	Other	3/20/2015	11:47:14	COM5	59.00	8.26	1.90	FILL LINES WITH 108BLS FRESH WATER.
Event	10	Test Lines	Test Lines	3/20/2015	11:53:03	COM5	1.00	8.44	0.80	TEST LINES TO 500PSI TO TEST KICKOUTS, THEN TO 3500PSI FOR JOB PRESSURES.
Event	11	Pump Cement	Pump Cement	3/20/2015	12:02:39	COM5	6.00	8.35	0.00	PUMPED 435SKS 90BLS @15.8PPG 1.16V 5.08GPS.
Event	12	Pump Displacement	Pump Displacement	3/20/2015	12:33:12	COM5	452.00	15.68	2.70	PUMPED 88BLS FRESHWATER, GOT 168BLS CEMENT TO SURFACE.

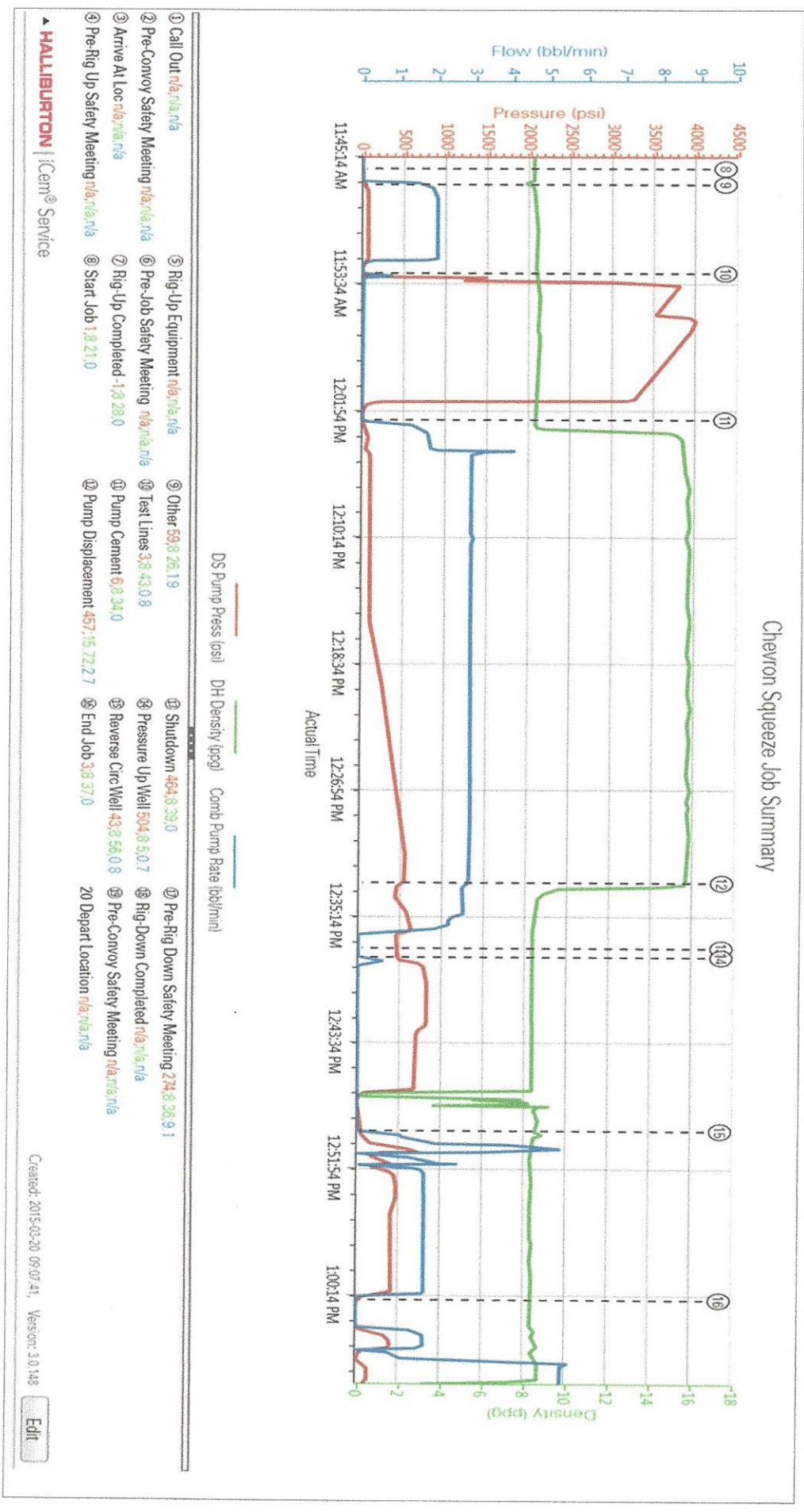
HALLBURTON

CHEVRON - MID-CONTINENT EBIZ
 902248472
 Case 1

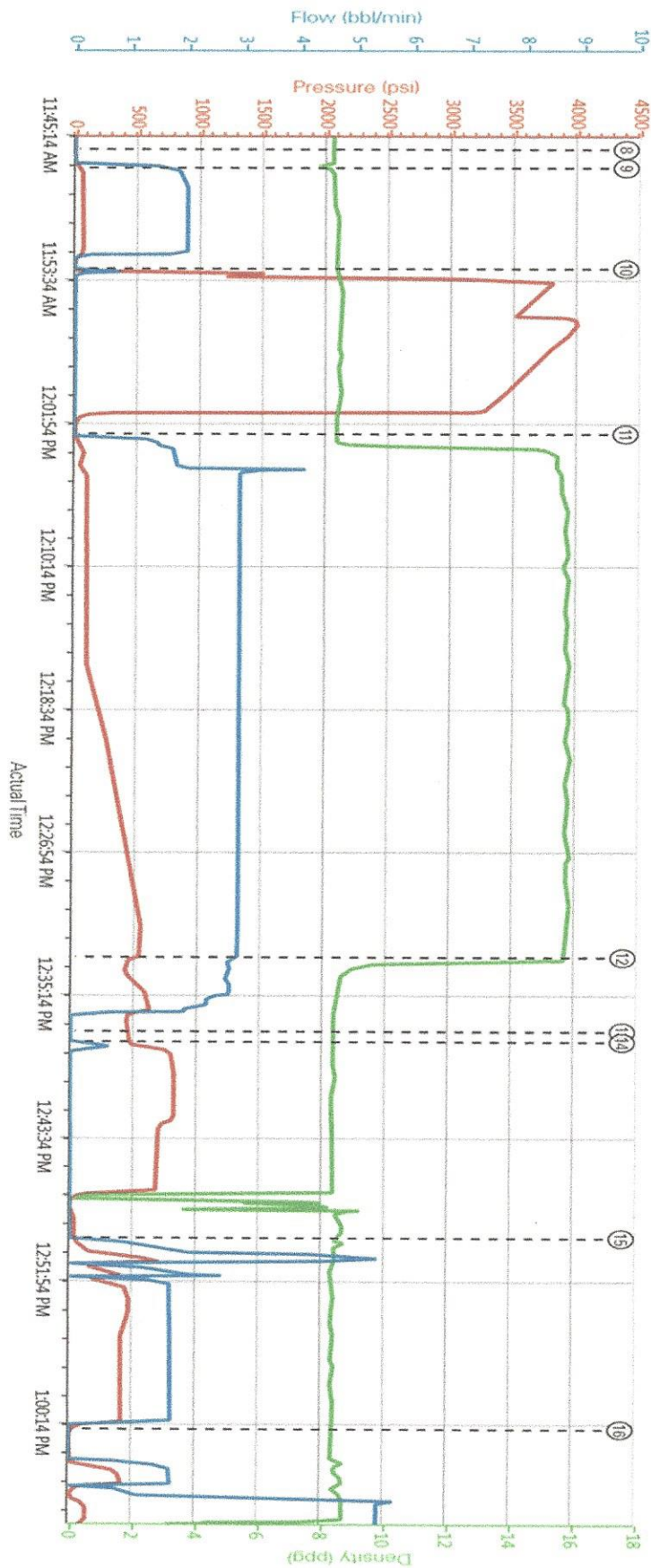
Event	13	Shutdown	Shutdown	3/20/2015	12:37:30	COM5	464.00	8.41	0.00	SHUTDOWN.
Event	14	Pressure Up Well	Pressure Up Well	3/20/2015	12:38:06	COM5	493.00	8.44	0.70	PRESSURES UP WELL TO 800PSI HELD FOR 5 MINUTES.
Event	15	Reverse Circ Well	Reverse Circ Well	3/20/2015	12:49:35	COM5	41.00	8.41	0.80	PUMPED 15BBLs FRESHWATER GOT 1.5BBLs BACK.
Event	16	End Job	End Job	3/20/2015	13:00:42	COM5	3.00	8.37	0.00	ALL PUMPING COMPLETE.
Event	17	Pre-Rig Down Safety Meeting	Pre-Rig Down Safety Meeting	3/20/2015	13:14:57	USER	273.00	8.35	9.10	CREW HELD MEETING DISCUSSING OVERHEAD LOADS AND PINCH POINTS.
Event	18	Rig-Down Completed	Rig-Down Completed	3/20/2015	14:15:00	USER				ALL HES LINES AND EQUIPMENT RIGGES DOWN SAFELY.
Event	19	Pre-Convoy Safety Meeting	Pre-Convoy Safety Meeting	3/20/2015	14:45:00	USER				CREW HELD MEETING DISCUSSING ROAD CONDITIONS AND FOLLOWING DISTANCE.
Event	20	Depart Location	Depart Location	3/20/2015	15:00:00	USER				ALL HES CREW AND EQUIPMENT LEFT LOCATION.

4.0 Attachments

4.1 JOB CHART WITH EVENTS.png

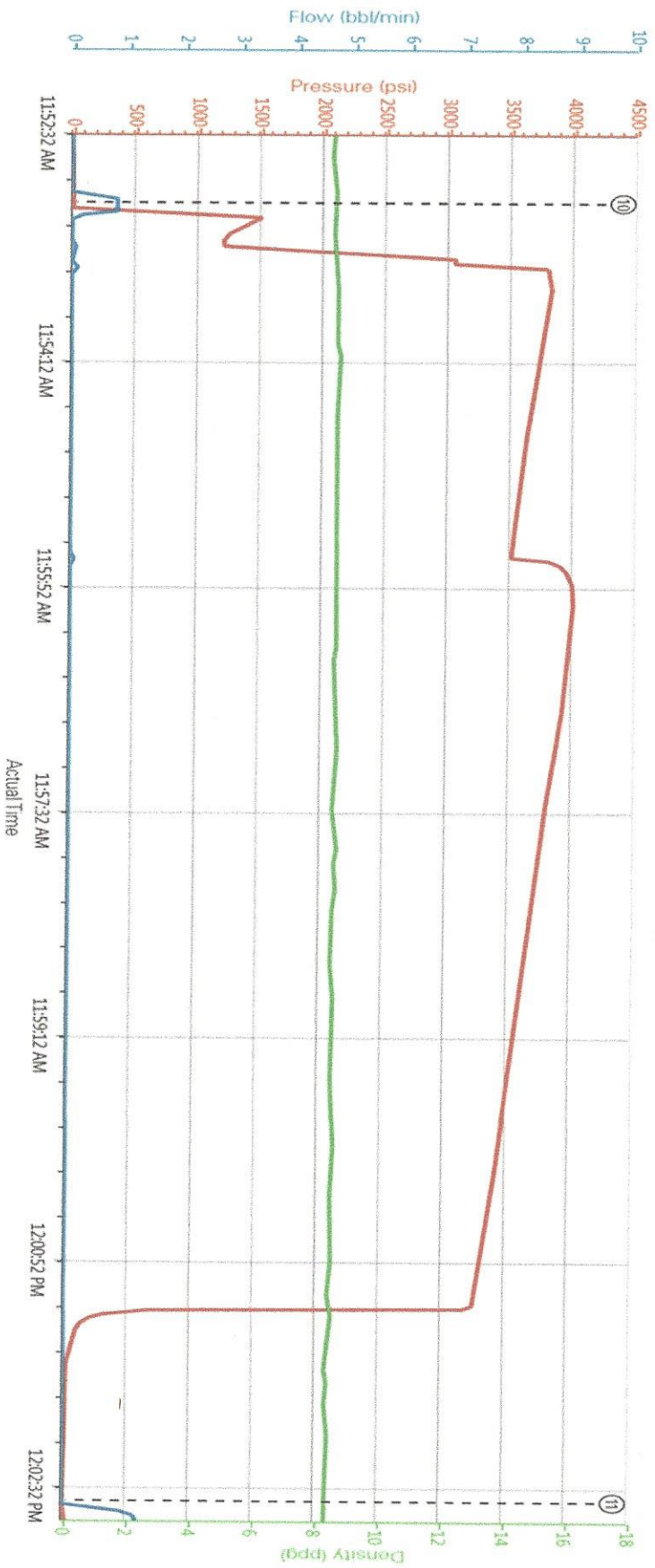


Chevron Squeeze Job Summary



4.3 PRESSURE TEST.png

Chevron Squeeze Job Summary



HALLIBURTON | iCem® Service

DS Pump Press (psi) DH Density (ppg) Comb Pump Rate (bbl/min)

Created: 2015-03-20 09:07:41 Version: 3.0.148

Edit

5.0 Custom Graphs

5.1 Custom Graph

Chevron Squeeze Job Summary

