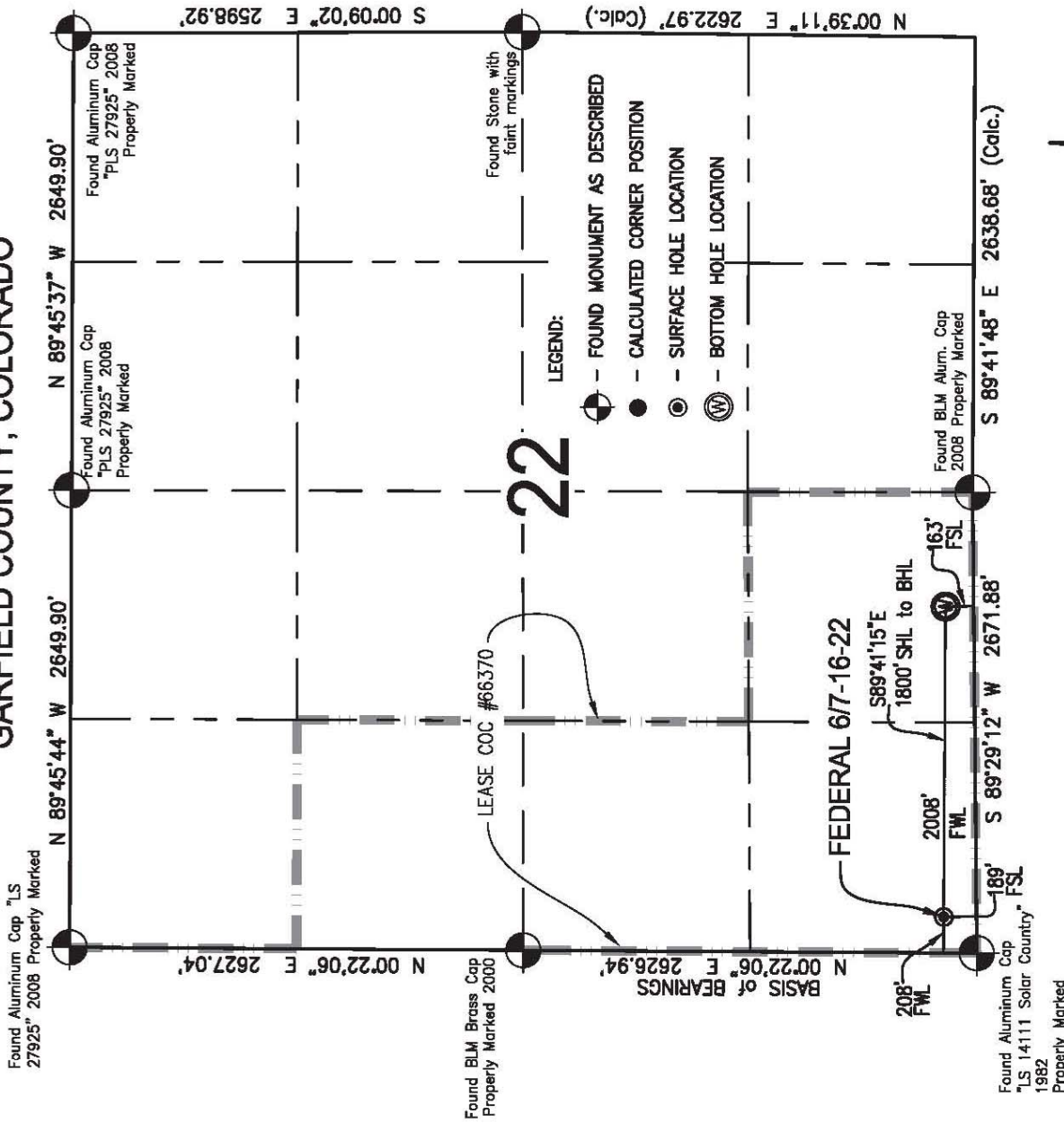
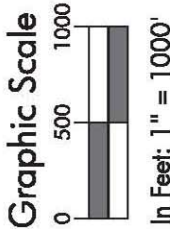


T. 6 S., R. 91 W., 6th P.M.  
GARFIELD COUNTY, COLORADO



OPERATOR: Coachman Energy Operating Company, LLC



- NOTES:
1. GEODETIC POSITIONS ARE SHOWN IN DECIMAL DEGREES, NAD83 (2011).
  2. UNITS OF LINEAR MEASUREMENT: U.S. SURVEY FOOT
  3. ELEVATIONS ARE BASED ON GPS OBSERVATIONS USING OPUS, GEOID 09, NAVD83.
  4. ALL SURFACE (SHL) AND BOTTOM (BHL) HOLE LOCATIONS ARE MEASURED AT 90° ANGLES FROM MEASURED NORTH (FNL), SOUTH (FSL), EAST (FEL) AND WEST (FWL) SECTION LINES. PROPOSED LOCATIONS HAVE BEEN PROVIDED BY THE CLIENT.
  5. BASIS OF BEARINGS: N 00°22'06" E BETWEEN FOUND MONUMENTS AS SHOWN HEREON.
  6. EXISTING GROUND ELEVATION AT PROPOSED PAD: 7048.4'.
  7. PROPOSED PAD ELEVATION: 7047.0'.
  8. GPS OPERATOR: TIM BARNETT OBSERVED AN AVERAGE PDOP OF ≤ 3.0 FOR ALL SURVEY MEASUREMENTS DEPICTED ON THIS AND SUBSEQUENT SHEETS. ALL GPS OBSERVATIONS ARE IN COMPLIANCE WITH COGCC RULE NO. 215
  9. SURFACE USE: WILDLIFE AREA
  10. USGS QUAD MAP: NEW CASTLE

**SURVEYORS STATEMENT:**  
I, ROBERT E. BRANDEBERRY, BEING A PROFESSIONAL LAND SURVEYOR LICENSED IN THE STATE OF COLORADO, DO HEREBY CERTIFY THAT THIS PLAN OR REPRESENTS A SURVEY PERFORMED BY ME OR UNDER MY DIRECT SUPERVISION BETWEEN APRIL 2010 AND JANUARY 2011, AND IS TRUE TO THE BEST OF MY KNOWLEDGE AND BELIEF. THE SURFACE HOLE LOCATION WAS STAKED IN THE FIELD AS SHOWN HEREON ON JANUARY 2, 2015.

38388

1/5/15

Robert E. Brandeberry

WELL NAME	SECTION	LINE	TIES	NAD 83(2011)	COORDINATE
FEDERAL 6/7-16-22	FOOTAGES	FOOTAGES	LATITUDE	LATITUDE	LONGITUDE
SURFACE HOLE LOCATION	189' FSL	208' FSL	39.506991°N	107.548979°W	
BOTTOM HOLE LOCATION	163' FSL	2008' FSL	39.507075°N	107.542604°W	

ROBERT E. BRANDEBERRY  
COLORADO LS 38388

	Coachman Energy Operating Company, LLC Garfield County, Colorado	Job No. 2010-112001	Sht. 1J
		Drawn by: nrb	Of 9
118 West Sixth Street, Suite 200 Glenwood Springs, CO 81601 970.943.1004 www.sgm-inc.com		Well Location Plat Federal 6/7-16-22 SE1/4 SW1/4 Section 22, T.6S., R.91W., 6th P.M.	