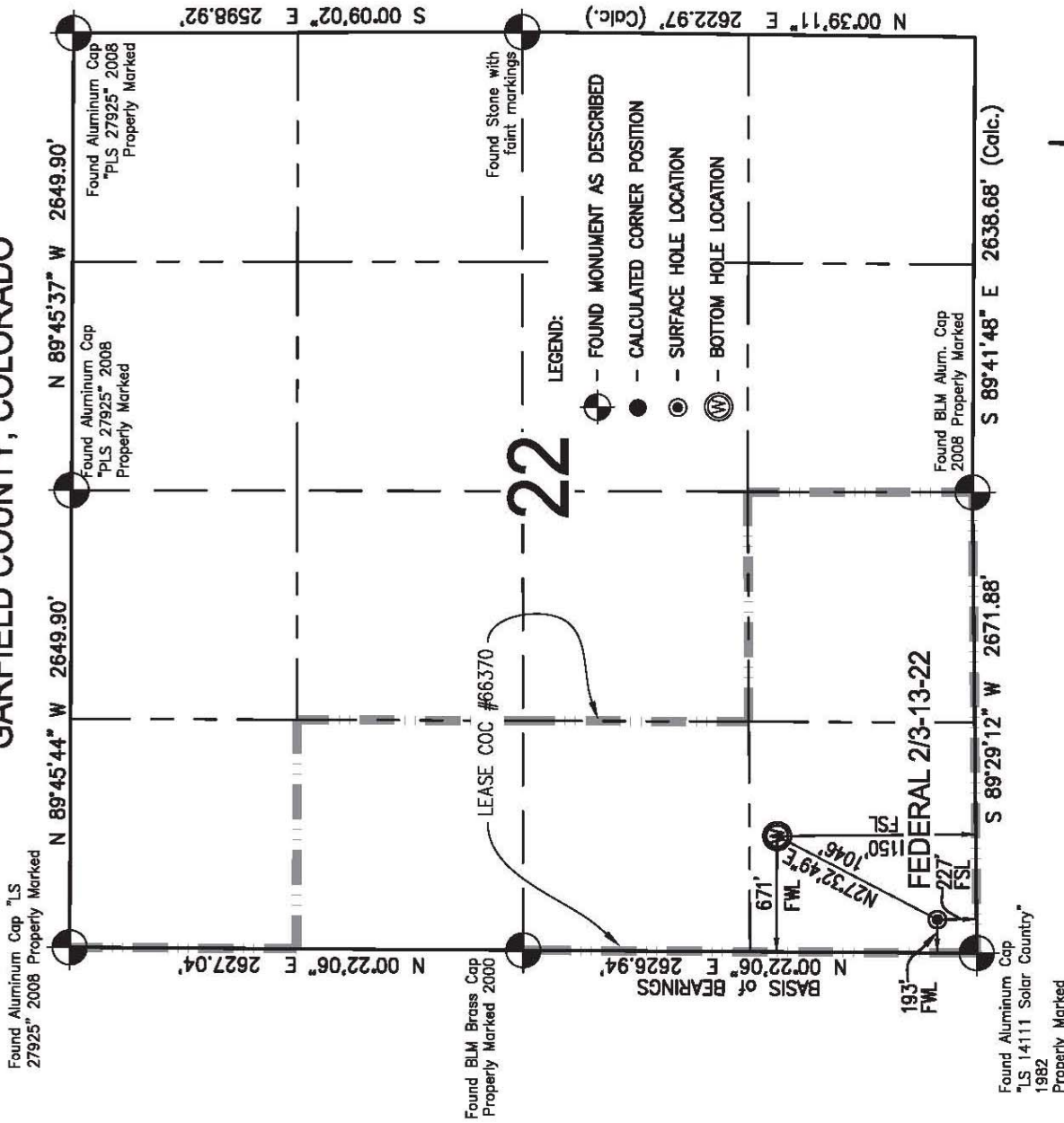
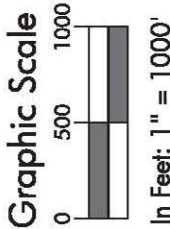


T. 6 S., R. 91 W., 6th P.M.
GARFIELD COUNTY, COLORADO



OPERATOR: Coachman Energy Operating Company, LLC



- NOTES:
1. GEODETIC POSITIONS ARE SHOWN IN DECIMAL DEGREES, NAD83 (2011).
 2. UNITS OF LINEAR MEASUREMENT: U.S. SURVEY FOOT
 3. ELEVATIONS ARE BASED ON GPS OBSERVATIONS USING OPUS, GEOID 09, NAVD88.
 4. ALL SURFACE (SHL) AND BOTTOM (BHL) HOLE LOCATIONS ARE MEASURED AT 90° ANGLES FROM MEASURED NORTH (FNL), SOUTH (FSL), EAST (FEL) AND WEST (FWL) SECTION LINES. PROPOSED LOCATIONS HAVE BEEN PROVIDED BY THE CLIENT.
 5. BASIS OF BEARINGS: N 00°22'06" E BETWEEN FOUND MONUMENTS AS SHOWN HEREON.
 6. EXISTING GROUND ELEVATION AT PROPOSED PAD: 7046.9'.
 7. GPS OPERATOR: TIM BARNETT OBSERVED AN AVERAGE PDOP OF ≤ 3.0 FOR ALL SURVEY MEASUREMENTS DEPICTED ON THIS AND SUBSEQUENT SHEETS. ALL GPS OBSERVATIONS ARE IN COMPLIANCE WITH COGCC RULE NO. 215
 8. SURFACE USE: WILDLIFE AREA
 9. USGS QUAD MAP: NEW CASTLE

SURVEYORS STATEMENT:
I, ROBERT E. BRANDEBERRY, BEING A PROFESSIONAL LAND SURVEYOR LICENSED IN THE STATE OF COLORADO, DO HEREBY CERTIFY THAT THIS PLAN OR REPRESENTS A SURVEY PERFORMED BY ME OR UNDER MY DIRECT SUPERVISION BETWEEN APRIL 2010 AND JANUARY 2011, AND IS TRUE TO THE BEST OF MY KNOWLEDGE AND BELIEF. THE SURFACE HOLE LOCATION WAS STAKED IN THE FIELD AS SHOWN HEREON ON JANUARY 2, 2015.

Robert E. Brandeberry
1/5/15



WELL NAME	SECTION	LINE	TIES	NAD 83(2011)	COORDINATE
FEDERAL 2/3-13-22	FOOTAGES			LATITUDE	LONGITUDE
SURFACE HOLE LOCATION	227' FSL	193' FWL	39.507093°N	107.549035°W	
BOTTOM HOLE LOCATION	1150' FSL	671' FWL	39.509668°N	107.547395°W	

SGM
118 West Sixth Street, Suite 200
Glenwood Springs, CO 81601
970.943.1004 www.sgm-inc.com

Coachman Energy
Operating Company, LLC
Garfield County, Colorado

Job No. 2010-112,001
Drawn by: rmb
Date: 01.02.15
Approved: as
File: 22A.VP

Well Location Plat
Federal 2/3-13-22
SW1/4 SW1/4 Section 22, T.6S., R.91W., 6th P.M.
Sht. 1C
Of 9