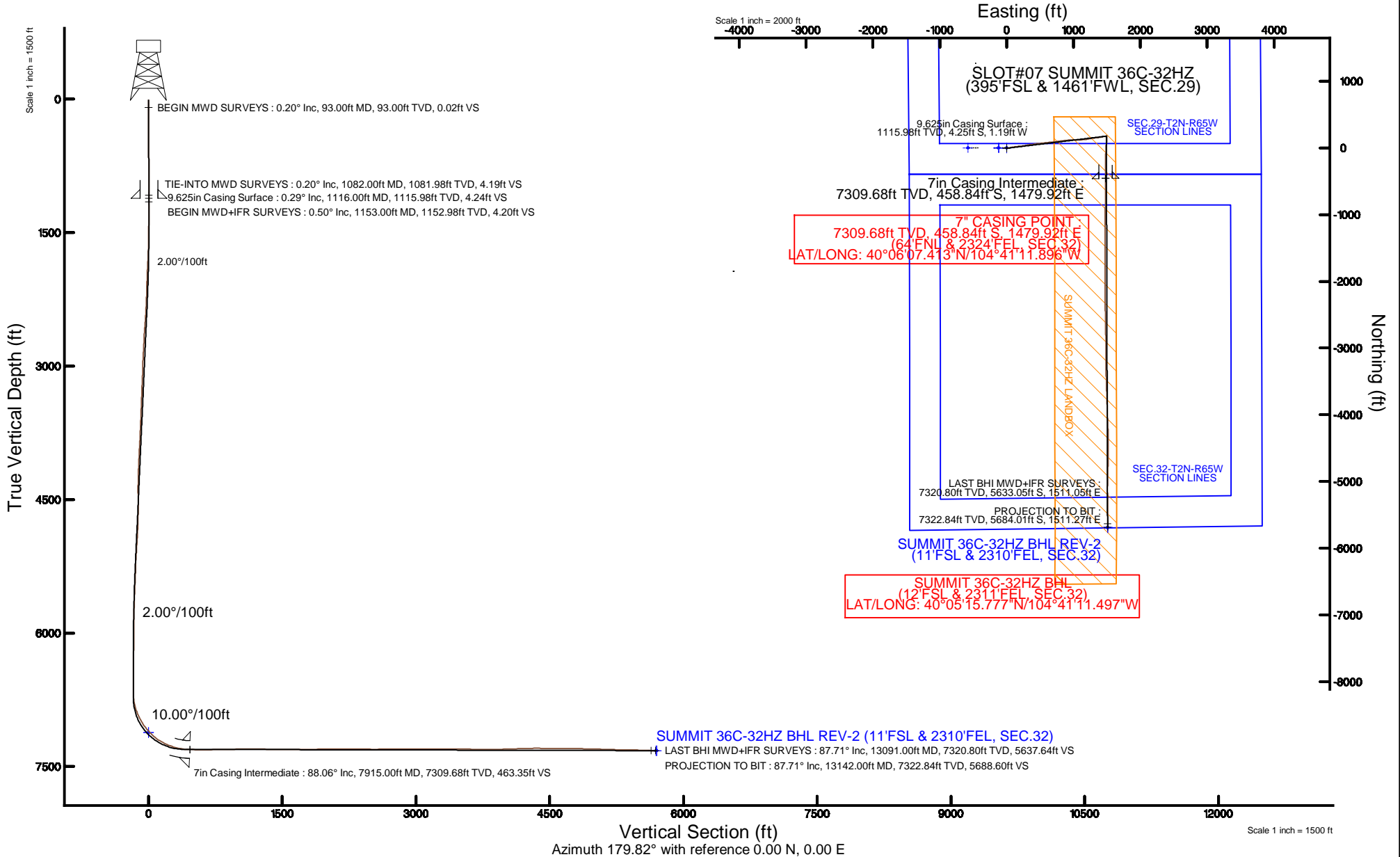


# KERR-MCGEE OIL & GAS ONSHORE LP (LAMBERT STATE PLANE COORD)

Location: COLORADO Slot: SLOT#07 SUMMIT 36C-32HZ (395'FSL & 1461'FWL, SEC.29)  
 Field: WELD COUNTY (KERR MCGEE) Well: SUMMIT 36C-32HZ  
 Facility: SEC.29-T2N-R65W Wellbore: SUMMIT 36C-32HZ PWB

Plot reference wellpath is SUMMIT 36C-32HZ (REV-A.0) PWP		Grid System: NAD83 / Lambert Colorado SP, Northern Zone (501), US feet
True vertical depths are referenced to XTREME 6 (16KB) (RKB)		North Reference: True north
Measured depths are referenced to XTREME 6 (16KB) (RKB)		Scale: True distance
XTREME 6 (16KB) (RKB) to Mean Sea Level: 4957 feet		Depths are in feet
Mean Sea Level to Mud line (At Slot: SLOT#07 SUMMIT 36C-32HZ (395'FSL & 1461'FWL, SEC.29)): 0 feet		Created by: amarc on 20/Feb/2015
Coordinates are in feet referenced to Slot		



### REFERENCE WELLPATH IDENTIFICATION

Operator	KERR-MCGEE OIL & GAS ONSHORE LP (LAMBERT STATE PLANE COORD)	Slot	SLOT#07 SUMMIT 36C-32HZ (395'FSL & 1461'FWL, SEC.29)
Area	COLORADO	Well	SUMMIT 36C-32HZ
Field	WELD COUNTY (KERR MCGEE)	Wellbore	SUMMIT 36C-32HZ AWB
Facility	SEC.29-T2N-R65W		

### REPORT SETUP INFORMATION

Projection System	NAD83 / Lambert Colorado SP, Northern Zone (501), US feet	Software System	WellArchitect® 4.1.1
North Reference	True	User	Amarcar
Scale	0.99996	Report Generated	20/Feb/2015 at 10:52
Convergence at slot	0.52° East	Database/Source file	WellArchitectDB/SUMMIT_36C-32HZ_AWB.xml

### WELLPATH LOCATION

	Local coordinates		Grid coordinates		Geographic coordinates	
	North[ft]	East[ft]	Easting[US ft]	Northing[US ft]	Latitude	Longitude
Slot Location	-0.61	119.98	3226038.16	1281513.33	40°06'11.948"N	104°41'30.941"W
Facility Reference Pt			3225918.18	1281512.85	40°06'11.954"N	104°41'32.485"W
Field Reference Pt			3197771.84	1268891.29	40°04'09.600"N	104°47'36.000"W

### WELLPATH DATUM

Calculation method	Minimum curvature	XTREME 6 (16'KB) (RKB) to Facility Vertical Datum	4957.00ft
Horizontal Reference Pt	Slot	XTREME 6 (16'KB) (RKB) to Mean Sea Level	4957.00ft
Vertical Reference Pt	XTREME 6 (16'KB) (RKB)	XTREME 6 (16'KB) (RKB) to Mud Line at Slot (SLOT#07 SUMMIT 36C-32HZ (395'FSL & 1461'FWL, SEC.29))	4957.00ft
MD Reference Pt	XTREME 6 (16'KB) (RKB)	Section Origin	N 0.00, E 0.00 ft
Field Vertical Reference	Mean Sea Level	Section Azimuth	179.82°

### REFERENCE WELLPATH IDENTIFICATION

Operator	KERR-MCGEE OIL & GAS ONSHORE LP (LAMBERT STATE PLANE COORD)	Slot	SLOT#07 SUMMIT 36C-32HZ (395'FSL & 1461'FWL, SEC.29)
Area	COLORADO	Well	SUMMIT 36C-32HZ
Field	WELD COUNTY (KERR MCGEE)	Wellbore	SUMMIT 36C-32HZ AWB
Facility	SEC.29-T2N-R65W		

### WELLPATH DATA (169 stations) † = interpolated/extrapolated station

MD [ft]	Inclination [°]	Azimuth [°]	TVD [ft]	Vert Sect [ft]	North [ft]	East [ft]	Latitude	Longitude	DLS [°/100ft]	Comments
0.00†	0.000	262.300	0.00	0.00	0.00	0.00	40°06'11.948"N	104°41'30.941"W	0.00	
16.00	0.000	262.300	16.00	0.00	0.00	0.00	40°06'11.948"N	104°41'30.941"W	0.00	
93.00	0.200	262.300	93.00	0.02	-0.02	-0.13	40°06'11.948"N	104°41'30.943"W	0.26	BEGIN MWD SURVEYS
209.00	0.100	264.800	209.00	0.05	-0.05	-0.43	40°06'11.947"N	104°41'30.947"W	0.09	
288.00	0.100	236.700	288.00	0.10	-0.10	-0.56	40°06'11.947"N	104°41'30.948"W	0.06	
368.00	0.300	199.300	368.00	0.33	-0.33	-0.69	40°06'11.945"N	104°41'30.950"W	0.29	
448.00	0.200	208.900	448.00	0.65	-0.65	-0.83	40°06'11.942"N	104°41'30.952"W	0.14	
528.00	0.500	189.500	528.00	1.12	-1.12	-0.95	40°06'11.937"N	104°41'30.953"W	0.40	
608.00	0.800	184.900	607.99	2.02	-2.02	-1.06	40°06'11.928"N	104°41'30.955"W	0.38	
688.00	0.800	184.800	687.98	3.13	-3.13	-1.15	40°06'11.917"N	104°41'30.956"W	0.00	
768.00	0.200	196.500	767.98	3.82	-3.82	-1.24	40°06'11.910"N	104°41'30.957"W	0.76	
848.00	0.100	271.000	847.98	3.95	-3.96	-1.35	40°06'11.909"N	104°41'30.958"W	0.25	
928.00	0.000	0.000	927.98	3.95	-3.96	-1.42	40°06'11.909"N	104°41'30.959"W	0.13	
1008.00	0.100	162.300	1007.98	4.02	-4.02	-1.39	40°06'11.908"N	104°41'30.959"W	0.13	
1082.00	0.200	146.400	1081.98	4.19	-4.19	-1.30	40°06'11.907"N	104°41'30.958"W	0.15	TIE-INTO MWD SURVEYS
1153.00	0.500	72.430	1152.98	4.20	-4.20	-0.94	40°06'11.906"N	104°41'30.953"W	0.68	BEGIN MWD+IFR SURVEYS
1247.00	1.530	72.920	1246.96	3.71	-3.71	0.65	40°06'11.911"N	104°41'30.933"W	1.10	
1338.00	4.080	86.580	1337.85	3.17	-3.16	5.04	40°06'11.917"N	104°41'30.876"W	2.88	
1430.00	6.330	86.290	1429.46	2.68	-2.64	13.37	40°06'11.922"N	104°41'30.769"W	2.45	
1520.00	8.520	85.850	1518.70	1.91	-1.83	24.98	40°06'11.930"N	104°41'30.620"W	2.43	
1611.00	10.110	83.700	1608.50	0.59	-0.47	39.64	40°06'11.943"N	104°41'30.431"W	1.79	
1702.00	10.180	76.100	1698.08	-2.17	2.34	55.38	40°06'11.971"N	104°41'30.228"W	1.47	
1792.00	11.880	77.170	1786.41	-6.09	6.31	72.14	40°06'12.010"N	104°41'30.013"W	1.90	
1883.00	13.310	78.510	1875.22	-10.20	10.48	91.54	40°06'12.052"N	104°41'29.763"W	1.60	
1974.00	14.420	80.580	1963.57	-14.07	14.42	112.98	40°06'12.090"N	104°41'29.487"W	1.34	
2066.00	16.380	83.540	2052.26	-17.33	17.75	137.18	40°06'12.123"N	104°41'29.176"W	2.29	
2158.00	18.140	85.190	2140.12	-19.91	20.41	164.34	40°06'12.150"N	104°41'28.826"W	1.99	
2250.00	20.050	84.900	2227.05	-22.42	23.02	194.32	40°06'12.175"N	104°41'28.440"W	2.08	
2341.00	20.860	81.660	2312.32	-26.06	26.75	225.89	40°06'12.212"N	104°41'28.034"W	1.53	
2431.00	21.860	81.440	2396.13	-30.78	31.57	258.31	40°06'12.260"N	104°41'27.617"W	1.11	
2521.00	21.210	80.030	2479.85	-35.99	36.88	290.92	40°06'12.312"N	104°41'27.197"W	0.92	
2607.00	20.380	78.310	2560.25	-41.63	42.61	320.90	40°06'12.369"N	104°41'26.811"W	1.20	
2692.00	20.780	79.470	2639.82	-47.30	48.37	350.22	40°06'12.426"N	104°41'26.434"W	0.67	
2777.00	21.850	85.580	2719.02	-51.18	52.34	380.82	40°06'12.465"N	104°41'26.040"W	2.90	
2863.00	20.410	81.520	2799.24	-54.53	55.79	411.61	40°06'12.499"N	104°41'25.644"W	2.39	
2948.00	18.430	78.610	2879.40	-59.28	60.62	439.45	40°06'12.547"N	104°41'25.286"W	2.59	
3032.00	19.080	85.940	2958.95	-62.80	64.22	466.16	40°06'12.583"N	104°41'24.942"W	2.91	
3117.00	21.100	84.680	3038.78	-65.11	66.62	495.26	40°06'12.606"N	104°41'24.567"W	2.43	
3203.00	21.960	84.000	3118.77	-68.13	69.74	526.66	40°06'12.637"N	104°41'24.163"W	1.04	
3288.00	20.530	83.240	3198.00	-71.45	73.15	557.27	40°06'12.671"N	104°41'23.769"W	1.71	
3373.00	21.380	85.090	3277.37	-74.44	76.23	587.51	40°06'12.701"N	104°41'23.380"W	1.27	
3458.00	19.510	82.300	3357.02	-77.58	79.46	617.02	40°06'12.733"N	104°41'23.001"W	2.48	
3543.00	20.660	83.900	3436.85	-80.99	82.96	645.99	40°06'12.768"N	104°41'22.628"W	1.50	
3629.00	21.720	85.400	3517.03	-83.78	85.85	676.94	40°06'12.796"N	104°41'22.229"W	1.38	
3714.00	19.790	82.320	3596.52	-86.87	89.03	706.88	40°06'12.828"N	104°41'21.844"W	2.61	

REFERENCE WELLPATH IDENTIFICATION				
Operator	KERR-MCGEE OIL & GAS ONSHORE LP (LAMBERT STATE PLANE COORD)		Slot	SLOT#07 SUMMIT 36C-32HZ (395'FSL & 1461'FWL, SEC.29)
Area	COLORADO		Well	SUMMIT 36C-32HZ
Field	WELD COUNTY (KERR MCGEE)		Wellbore	SUMMIT 36C-32HZ AWB
Facility	SEC.29-T2N-R65W			

WELLPATH DATA (169 stations)										
MD [ft]	Inclination [°]	Azimuth [°]	TVD [ft]	Vert Sect [ft]	North [ft]	East [ft]	Latitude	Longitude	DLS ["/100ft]	Comments
3798.00	20.680	84.350	3675.33	-90.14	92.39	735.74	40°06'12.861"N	104°41'21.473"W	1.35	
3883.00	18.780	82.490	3755.34	-93.32	95.66	764.24	40°06'12.893"N	104°41'21.106"W	2.35	
3968.00	21.070	83.220	3835.24	-96.83	99.25	792.98	40°06'12.929"N	104°41'20.736"W	2.71	
4054.00	21.550	80.330	3915.37	-101.21	103.73	823.90	40°06'12.973"N	104°41'20.338"W	1.34	
4139.00	22.060	83.610	3994.29	-105.52	108.13	855.16	40°06'13.016"N	104°41'19.936"W	1.55	
4224.00	21.450	82.110	4073.23	-109.33	112.04	886.42	40°06'13.055"N	104°41'19.534"W	0.97	
4309.00	21.800	87.300	4152.26	-112.11	114.92	917.58	40°06'13.083"N	104°41'19.133"W	2.29	
4393.00	20.950	86.240	4230.48	-113.74	116.64	948.14	40°06'13.100"N	104°41'18.739"W	1.11	
4479.00	18.520	83.450	4311.43	-116.22	119.20	977.06	40°06'13.126"N	104°41'18.367"W	3.03	
4564.00	19.580	90.240	4391.78	-117.61	120.68	1004.72	40°06'13.140"N	104°41'18.011"W	2.89	
4650.00	21.530	96.320	4472.31	-115.72	118.88	1034.82	40°06'13.123"N	104°41'17.624"W	3.36	
4734.00	22.010	87.470	4550.34	-114.63	117.88	1065.87	40°06'13.113"N	104°41'17.224"W	3.95	
4819.00	21.060	86.610	4629.41	-116.14	119.49	1097.03	40°06'13.129"N	104°41'16.823"W	1.18	
4904.00	20.120	86.400	4708.97	-117.87	121.31	1126.87	40°06'13.147"N	104°41'16.439"W	1.11	
4990.00	19.890	85.000	4789.79	-119.98	123.51	1156.20	40°06'13.168"N	104°41'16.062"W	0.62	
5075.00	20.750	81.700	4869.50	-123.33	126.95	1185.51	40°06'13.202"N	104°41'15.685"W	1.69	
5160.00	19.400	79.320	4949.33	-128.03	131.74	1214.28	40°06'13.250"N	104°41'15.314"W	1.86	
5245.00	20.780	81.890	5029.16	-132.68	136.48	1243.08	40°06'13.296"N	104°41'14.944"W	1.93	
5330.00	19.170	76.970	5109.05	-137.87	141.76	1271.61	40°06'13.349"N	104°41'14.576"W	2.74	
5417.00	18.500	83.670	5191.40	-142.53	146.50	1299.25	40°06'13.395"N	104°41'14.221"W	2.60	
5502.00	17.750	84.070	5272.18	-145.27	149.32	1325.54	40°06'13.423"N	104°41'13.882"W	0.89	
5587.00	16.850	82.380	5353.34	-148.17	152.30	1350.64	40°06'13.453"N	104°41'13.559"W	1.21	
5673.00	14.520	81.100	5436.13	-151.42	155.62	1373.65	40°06'13.485"N	104°41'13.263"W	2.74	
5757.00	14.010	79.320	5517.54	-154.87	159.13	1394.04	40°06'13.520"N	104°41'13.001"W	0.80	
5842.00	10.160	80.240	5600.64	-158.00	162.31	1411.55	40°06'13.552"N	104°41'12.776"W	4.53	
5927.00	9.030	78.360	5684.45	-160.57	164.93	1425.47	40°06'13.577"N	104°41'12.596"W	1.38	
6012.00	8.300	74.710	5768.48	-163.50	167.89	1437.92	40°06'13.607"N	104°41'12.436"W	1.07	
6097.00	7.810	80.660	5852.64	-166.02	170.45	1449.54	40°06'13.632"N	104°41'12.287"W	1.14	
6183.00	5.690	90.110	5938.04	-166.93	171.39	1459.57	40°06'13.641"N	104°41'12.158"W	2.77	
6268.00	5.390	89.920	6022.65	-166.90	171.38	1467.78	40°06'13.641"N	104°41'12.052"W	0.35	
6352.00	4.660	89.230	6106.32	-166.93	171.43	1475.13	40°06'13.642"N	104°41'11.957"W	0.87	
6437.00	4.090	88.210	6191.08	-167.05	171.58	1481.62	40°06'13.643"N	104°41'11.874"W	0.68	
6522.00	3.840	89.540	6275.87	-167.15	171.69	1487.49	40°06'13.644"N	104°41'11.798"W	0.31	
6607.00	2.320	54.910	6360.75	-168.15	172.71	1491.75	40°06'13.654"N	104°41'11.743"W	2.75	
6692.00	1.660	59.690	6445.70	-169.75	174.32	1494.22	40°06'13.670"N	104°41'11.712"W	0.80	
6777.00	1.650	55.470	6530.67	-171.06	175.63	1496.29	40°06'13.683"N	104°41'11.685"W	0.14	
6862.00	0.810	172.070	6615.65	-171.15	175.73	1497.38	40°06'13.684"N	104°41'11.671"W	2.52	
6947.00	1.610	161.710	6700.64	-169.42	174.00	1497.84	40°06'13.667"N	104°41'11.665"W	0.97	
6990.00	6.040	177.830	6743.53	-166.59	171.16	1498.11	40°06'13.639"N	104°41'11.662"W	10.50	
7032.00	10.760	175.240	6785.07	-160.47	165.05	1498.52	40°06'13.579"N	104°41'11.656"W	11.27	
7075.00	15.610	176.260	6826.92	-150.69	155.27	1499.23	40°06'13.482"N	104°41'11.647"W	11.29	
7117.00	19.700	176.840	6866.93	-137.97	142.55	1499.99	40°06'13.356"N	104°41'11.637"W	9.75	
7160.00	23.170	180.370	6906.96	-122.27	126.85	1500.34	40°06'13.201"N	104°41'11.633"W	8.61	
7202.00	25.650	182.890	6945.20	-104.93	109.51	1499.83	40°06'13.030"N	104°41'11.640"W	6.40	
7245.00	29.740	189.030	6983.27	-85.09	89.67	1497.68	40°06'12.834"N	104°41'11.667"W	11.59	

### REFERENCE WELLPATH IDENTIFICATION

Operator	KERR-MCGEE OIL & GAS ONSHORE LP (LAMBERT STATE PLANE COORD)	Slot	SLOT#07 SUMMIT 36C-32HZ (395'FSL & 1461'FWL, SEC.29)
Area	COLORADO	Well	SUMMIT 36C-32HZ
Field	WELD COUNTY (KERR MCGEE)	Wellbore	SUMMIT 36C-32HZ AWB
Facility	SEC.29-T2N-R65W		

### WELLPATH DATA (169 stations) † = interpolated/extrapolated station

MD [ft]	Inclination [°]	Azimuth [°]	TVD [ft]	Vert Sect [ft]	North [ft]	East [ft]	Latitude	Longitude	DLS [°/100ft]	Comments
7287.00	33.210	189.420	7019.09	-63.46	68.03	1494.16	40°06'12.620"N	104°41'11.712"W	8.28	
7330.00	36.710	190.700	7054.32	-39.22	43.77	1489.85	40°06'12.380"N	104°41'11.768"W	8.32	
7372.00	39.830	185.210	7087.30	-13.49	18.03	1486.29	40°06'12.126"N	104°41'11.814"W	10.98	
7415.00	44.430	180.810	7119.19	15.29	-10.76	1484.83	40°06'11.841"N	104°41'11.833"W	12.71	
7457.00	46.700	181.150	7148.59	45.27	-40.74	1484.31	40°06'11.545"N	104°41'11.839"W	5.44	
7500.00	51.210	181.930	7176.82	77.68	-73.15	1483.44	40°06'11.225"N	104°41'11.851"W	10.58	
7542.00	56.530	183.290	7201.58	111.55	-107.02	1481.88	40°06'10.890"N	104°41'11.871"W	12.93	
7585.00	59.970	183.520	7224.20	148.04	-143.52	1479.71	40°06'10.529"N	104°41'11.899"W	8.01	
7627.00	64.600	180.760	7243.73	185.17	-180.66	1478.34	40°06'10.162"N	104°41'11.916"W	12.46	
7670.00	68.840	180.390	7260.72	224.66	-220.15	1477.94	40°06'09.772"N	104°41'11.921"W	9.89	
7713.00	71.840	180.520	7275.19	265.15	-260.63	1477.62	40°06'09.372"N	104°41'11.926"W	6.98	
7755.00	75.010	179.660	7287.17	305.39	-300.88	1477.56	40°06'08.974"N	104°41'11.926"W	7.80	
7798.00	78.230	178.470	7297.12	347.22	-342.70	1478.24	40°06'08.561"N	104°41'11.918"W	7.96	
7841.00	82.200	179.260	7304.43	389.58	-385.06	1479.08	40°06'08.142"N	104°41'11.907"W	9.41	
7876.00	86.570	179.380	7307.85	424.40	-419.88	1479.50	40°06'07.798"N	104°41'11.902"W	12.49	
7915.00†	88.059	179.380	7309.68	463.35	-458.84	1479.92	40°06'07.413"N	104°41'11.896"W	3.82	7" CASING POINT
7931.00	88.670	179.380	7310.13	479.35	-474.83	1480.09	40°06'07.255"N	104°41'11.894"W	3.82	
7974.00	88.860	178.960	7311.06	522.33	-517.81	1480.71	40°06'06.830"N	104°41'11.886"W	1.07	
8059.00	90.060	180.610	7311.86	607.33	-602.80	1481.03	40°06'05.991"N	104°41'11.882"W	2.40	
8144.00	90.900	180.810	7311.15	692.31	-687.79	1479.98	40°06'05.151"N	104°41'11.896"W	1.02	
8229.00	91.180	180.830	7309.61	777.28	-772.77	1478.76	40°06'04.311"N	104°41'11.911"W	0.33	
8313.00	91.180	181.340	7307.88	861.25	-856.74	1477.17	40°06'03.481"N	104°41'11.932"W	0.61	
8399.00	91.110	180.870	7306.16	947.21	-942.71	1475.51	40°06'02.632"N	104°41'11.953"W	0.55	
8484.00	91.070	180.600	7304.54	1032.18	-1027.68	1474.42	40°06'01.792"N	104°41'11.967"W	0.32	
8569.00	89.230	179.610	7304.32	1117.18	-1112.68	1474.27	40°06'00.952"N	104°41'11.969"W	2.46	
8655.00	89.780	180.770	7305.06	1203.17	-1198.67	1473.98	40°06'00.102"N	104°41'11.973"W	1.49	
8740.00	89.590	180.790	7305.53	1288.16	-1283.66	1472.83	40°05'59.262"N	104°41'11.988"W	0.22	
8824.00	89.040	180.320	7306.53	1372.14	-1367.65	1472.01	40°05'58.432"N	104°41'11.999"W	0.86	
8909.00	88.920	180.130	7308.05	1457.13	-1452.64	1471.68	40°05'57.592"N	104°41'12.003"W	0.26	
8995.00	90.300	180.540	7308.63	1543.12	-1538.63	1471.18	40°05'56.743"N	104°41'12.010"W	1.67	
9080.00	89.690	179.590	7308.64	1628.12	-1623.63	1471.08	40°05'55.903"N	104°41'12.011"W	1.33	
9165.00	90.640	179.640	7308.39	1713.11	-1708.63	1471.65	40°05'55.063"N	104°41'12.004"W	1.12	
9250.00	90.860	179.880	7307.28	1798.11	-1793.62	1472.01	40°05'54.223"N	104°41'11.999"W	0.38	
9335.00	91.010	179.780	7305.89	1883.10	-1878.61	1472.26	40°05'53.383"N	104°41'11.996"W	0.21	
9420.00	90.640	179.960	7304.67	1968.09	-1963.60	1472.45	40°05'52.543"N	104°41'11.993"W	0.48	
9505.00	90.610	180.490	7303.74	2053.08	-2048.59	1472.12	40°05'51.703"N	104°41'11.998"W	0.62	
9590.00	90.550	179.920	7302.88	2138.07	-2133.59	1471.81	40°05'50.863"N	104°41'12.002"W	0.67	
9675.00	89.840	179.490	7302.59	2223.07	-2218.59	1472.25	40°05'50.023"N	104°41'11.996"W	0.98	
9761.00	89.530	179.350	7303.07	2309.07	-2304.58	1473.12	40°05'49.173"N	104°41'11.985"W	0.40	
9848.00	88.950	178.400	7304.22	2396.05	-2391.55	1474.83	40°05'48.314"N	104°41'11.963"W	1.28	
9933.00	89.200	177.930	7305.59	2481.00	-2476.50	1477.55	40°05'47.474"N	104°41'11.928"W	0.63	
10018.00	90.460	179.200	7305.85	2565.98	-2561.47	1479.68	40°05'46.635"N	104°41'11.901"W	2.10	
10103.00	90.860	179.450	7304.87	2650.97	-2646.46	1480.68	40°05'45.795"N	104°41'11.888"W	0.55	
10188.00	90.150	178.970	7304.12	2735.96	-2731.44	1481.85	40°05'44.955"N	104°41'11.873"W	1.01	
10273.00	89.410	179.360	7304.44	2820.95	-2816.43	1483.09	40°05'44.115"N	104°41'11.857"W	0.98	

### REFERENCE WELLPATH IDENTIFICATION

Operator	KERR-MCGEE OIL & GAS ONSHORE LP (LAMBERT STATE PLANE COORD)	Slot	SLOT#07 SUMMIT 36C-32HZ (395'FSL & 1461'FWL, SEC.29)
Area	COLORADO	Well	SUMMIT 36C-32HZ
Field	WELD COUNTY (KERR MCGEE)	Wellbore	SUMMIT 36C-32HZ AWB
Facility	SEC.29-T2N-R65W		

### WELLPATH DATA (169 stations)

MD [ft]	Inclination [°]	Azimuth [°]	TVD [ft]	Vert Sect [ft]	North [ft]	East [ft]	Latitude	Longitude	DLS [°/100ft]	Comments
10358.00	90.220	179.000	7304.72	2905.94	-2901.42	1484.31	40°05'43.275"N	104°41'11.842"W	1.04	
10443.00	91.140	179.290	7303.71	2990.93	-2986.41	1485.58	40°05'42.435"N	104°41'11.825"W	1.13	
10528.00	90.460	179.340	7302.52	3075.92	-3071.39	1486.59	40°05'41.596"N	104°41'11.812"W	0.80	
10613.00	90.090	179.480	7302.11	3160.92	-3156.39	1487.47	40°05'40.756"N	104°41'11.801"W	0.47	
110698.00	90.090	179.360	7301.98	3245.91	-3241.38	1488.33	40°05'39.916"N	104°41'11.790"W	0.14	
10782.00	90.520	179.830	7301.53	3329.91	-3325.38	1488.92	40°05'39.086"N	104°41'11.783"W	0.76	
10867.00	90.280	179.420	7300.94	3414.91	-3410.37	1489.48	40°05'38.246"N	104°41'11.775"W	0.56	
10953.00	87.780	178.080	7302.40	3500.87	-3496.33	1491.35	40°05'37.396"N	104°41'11.751"W	3.30	
11038.00	88.490	178.340	7305.16	3585.79	-3581.25	1494.01	40°05'36.557"N	104°41'11.717"W	0.89	
11122.00	88.150	177.810	7307.62	3669.72	-3665.16	1496.83	40°05'35.728"N	104°41'11.681"W	0.75	
11207.00	90.090	178.100	7308.93	3754.66	-3750.09	1499.86	40°05'34.889"N	104°41'11.642"W	2.31	
11292.00	90.180	178.480	7308.73	3839.63	-3835.06	1502.40	40°05'34.049"N	104°41'11.610"W	0.46	
11378.00	91.690	178.200	7307.33	3925.58	-3921.01	1504.89	40°05'33.200"N	104°41'11.578"W	1.79	
11463.00	92.060	178.000	7304.55	4010.50	-4005.91	1507.70	40°05'32.361"N	104°41'11.541"W	0.49	
11547.00	91.510	177.330	7301.93	4094.40	-4089.80	1511.12	40°05'31.532"N	104°41'11.497"W	1.03	
11633.00	91.600	177.360	7299.60	4180.29	-4175.68	1515.11	40°05'30.683"N	104°41'11.446"W	0.11	
11718.00	92.040	178.430	7296.90	4265.19	-4260.58	1518.23	40°05'29.844"N	104°41'11.406"W	1.36	
11803.00	89.840	179.190	7295.50	4350.16	-4345.54	1519.99	40°05'29.004"N	104°41'11.384"W	2.74	
11887.00	89.690	179.810	7295.85	4434.16	-4429.54	1520.72	40°05'28.174"N	104°41'11.374"W	0.76	
11973.00	89.410	179.900	7296.52	4520.16	-4515.53	1520.94	40°05'27.324"N	104°41'11.371"W	0.34	
12058.00	89.630	180.700	7297.23	4605.15	-4600.53	1520.50	40°05'26.484"N	104°41'11.377"W	0.98	
12143.00	89.320	181.730	7298.01	4690.12	-4685.50	1518.70	40°05'25.645"N	104°41'11.401"W	1.27	
12229.00	89.690	181.530	7298.76	4776.07	-4771.47	1516.25	40°05'24.795"N	104°41'11.432"W	0.49	
12314.00	88.150	181.200	7300.36	4861.03	-4856.42	1514.22	40°05'23.956"N	104°41'11.458"W	1.85	
12399.00	89.120	181.520	7302.38	4945.97	-4941.37	1512.21	40°05'23.116"N	104°41'11.484"W	1.20	
12484.00	88.210	181.180	7304.36	5030.92	-5026.33	1510.21	40°05'22.277"N	104°41'11.510"W	1.14	
12567.00	87.840	180.100	7307.22	5113.86	-5109.27	1509.28	40°05'21.457"N	104°41'11.522"W	1.37	
12651.00	88.460	178.990	7309.93	5197.81	-5193.22	1509.95	40°05'20.627"N	104°41'11.513"W	1.51	
12736.00	89.230	179.760	7311.65	5282.79	-5278.20	1510.87	40°05'19.788"N	104°41'11.502"W	1.28	
12823.00	89.540	180.550	7312.58	5369.78	-5365.19	1510.64	40°05'18.928"N	104°41'11.505"W	0.98	
12909.00	88.290	179.910	7314.21	5455.76	-5451.18	1510.29	40°05'18.078"N	104°41'11.509"W	1.63	
12994.00	87.870	179.700	7317.06	5540.71	-5536.13	1510.58	40°05'17.239"N	104°41'11.506"W	0.55	
13091.00	87.710	179.750	7320.80	5637.64	-5633.05	1511.05	40°05'16.281"N	104°41'11.500"W	0.17	LAST BHI MWD+IFR SURVEYS
13142.00	87.710	179.750	7322.84	5688.60	-5684.01	1511.27	40°05'15.777"N	104°41'11.497"W	0.00	PROJECTION TO BIT

### HOLE & CASING SECTIONS - Ref Wellbore: SUMMIT 36C-32HZ AWB Ref Wellpath: SUMMIT 36C-32HZ AWP

String/Diameter	Start MD [ft]	End MD [ft]	Interval [ft]	Start TVD [ft]	End TVD [ft]	Start N/S [ft]	Start E/W [ft]	End N/S [ft]	End E/W [ft]
13.5in Open Hole	16.00	1127.00	1111.00	16.00	1126.98	0.00	0.00	-4.24	-1.13
9.625in Casing Surface	16.00	1116.00	1100.00	16.00	1115.98	0.00	0.00	-4.25	-1.19
8.75in Open Hole	1127.00	7925.00	6798.00	1126.98	7309.98	-4.24	-1.13	-468.83	1480.03
7in Casing Intermediate	16.00	7915.00	7899.00	16.00	7309.68	0.00	0.00	-458.84	1479.92
6.125in Open Hole	7925.00	13142.00	5217.00	7309.98	7322.84	-468.83	1480.03	-5684.01	1511.27

REFERENCE WELLPATH IDENTIFICATION			
Operator	KERR-MCGEE OIL & GAS ONSHORE LP (LAMBERT STATE PLANE COORD)	Slot	SLOT#07 SUMMIT 36C-32HZ (395'FSL & 1461'FWL, SEC.29)
Area	COLORADO	Well	SUMMIT 36C-32HZ
Field	WELD COUNTY (KERR MCGEE)	Wellbore	SUMMIT 36C-32HZ AWB
Facility	SEC.29-T2N-R65W		

TARGETS								
Name	TVD [ft]	North [ft]	East [ft]	Grid East [US ft]	Grid North [US ft]	Latitude	Longitude	Shape
SEC.29-T2N-R65W SECTION LINES	7118.00	0.81	-119.98	3225918.18	1281513.05	40°06'11.956"N	104°41'32.485"W	polygon
SEC.32-T2N-R65W SECTION LINES	7118.00	0.81	-119.98	3225918.18	1281513.05	40°06'11.956"N	104°41'32.485"W	polygon
SUMMIT 36C-32HZ BHL ON PLAT REV-1 (1'FSL & 2310'FEL, SEC.32)	7322.00	-5694.91	1510.12	3227600.05	1275832.66	40°05'15.670"N	104°41'11.512"W	point
SUMMIT 36C-32HZ BHL REV-2 (11'FSL & 2310'FEL, SEC.32)	7322.00	-5684.91	1510.12	3227599.95	1275842.66	40°05'15.768"N	104°41'11.512"W	point
SUMMIT 36C-32HZ LANDBOX	7322.00	0.00	0.00	3226038.16	1281513.33	40°06'11.948"N	104°41'30.941"W	polygon
SEC.29-T2N-R65W HARDLINES (460'SETBACKS)	7343.00	0.41	-579.89	3225458.31	1281508.46	40°06'11.952"N	104°41'38.404"W	polygon
SEC.32-T2N-R65W HARDLINES (460'SETBACKS)	7343.00	0.81	-119.98	3225918.18	1281513.05	40°06'11.956"N	104°41'32.485"W	polygon

WELLPATH COMPOSITION - Ref Wellbore: SUMMIT 36C-32HZ AWB Ref Wellpath: SUMMIT 36C-32HZ AWP				
Start MD [ft]	End MD [ft]	Positional Uncertainty Model	Log Name/Comment	Wellbore
16.00	1082.00	ISCWSA MWD, Rev. 2 (Standard)	CATHEDRAL ENERGY MWD SURVEYS 13.5" <93-1082>	SUMMIT 36C-32HZ AWB
1082.00	7876.00	NaviTrak (MAGCORR,IFR)	BHI MWD+IFR SURVEYS 8.75" <1153-7876>	SUMMIT 36C-32HZ AWB
7876.00	13091.00	NaviTrak (MAGCORR,IFR)	BHI MWD+IFR SURVEYS 6.125" <7931-13091>	SUMMIT 36C-32HZ AWB
13091.00	13142.00	Blind Drilling (std)	Projection to bit	SUMMIT 36C-32HZ AWB

# Actual Wellpath Report

SUMMIT 36C-32HZ AWP

Page 7 of 7

REFERENCE WELLPATH IDENTIFICATION			
Operator	KERR-MCGEE OIL & GAS ONSHORE LP (LAMBERT STATE PLANE COORD)	Slot	SLOT#07 SUMMIT 36C-32HZ (395'FSL & 1461'FWL, SEC.29)
Area	COLORADO	Well	SUMMIT 36C-32HZ
Field	WELD COUNTY (KERR MCGEE)	Wellbore	SUMMIT 36C-32HZ AWB
Facility	SEC.29-T2N-R65W		

WELLPATH COMMENTS				
MD [ft]	Inclination [°]	Azimuth [°]	TVD [ft]	Comment
93.00	0.200	262.300	93.00	BEGIN MWD SURVEYS
1082.00	0.200	146.400	1081.98	TIE-INTO MWD SURVEYS
1153.00	0.500	72.430	1152.98	BEGIN MWD+IFR SURVEYS
7915.00	88.059	179.380	7309.68	7" CASING POINT
13091.00	87.710	179.750	7320.80	LAST BHI MWD+IFR SURVEYS
13142.00	87.710	179.750	7322.84	PROJECTION TO BIT