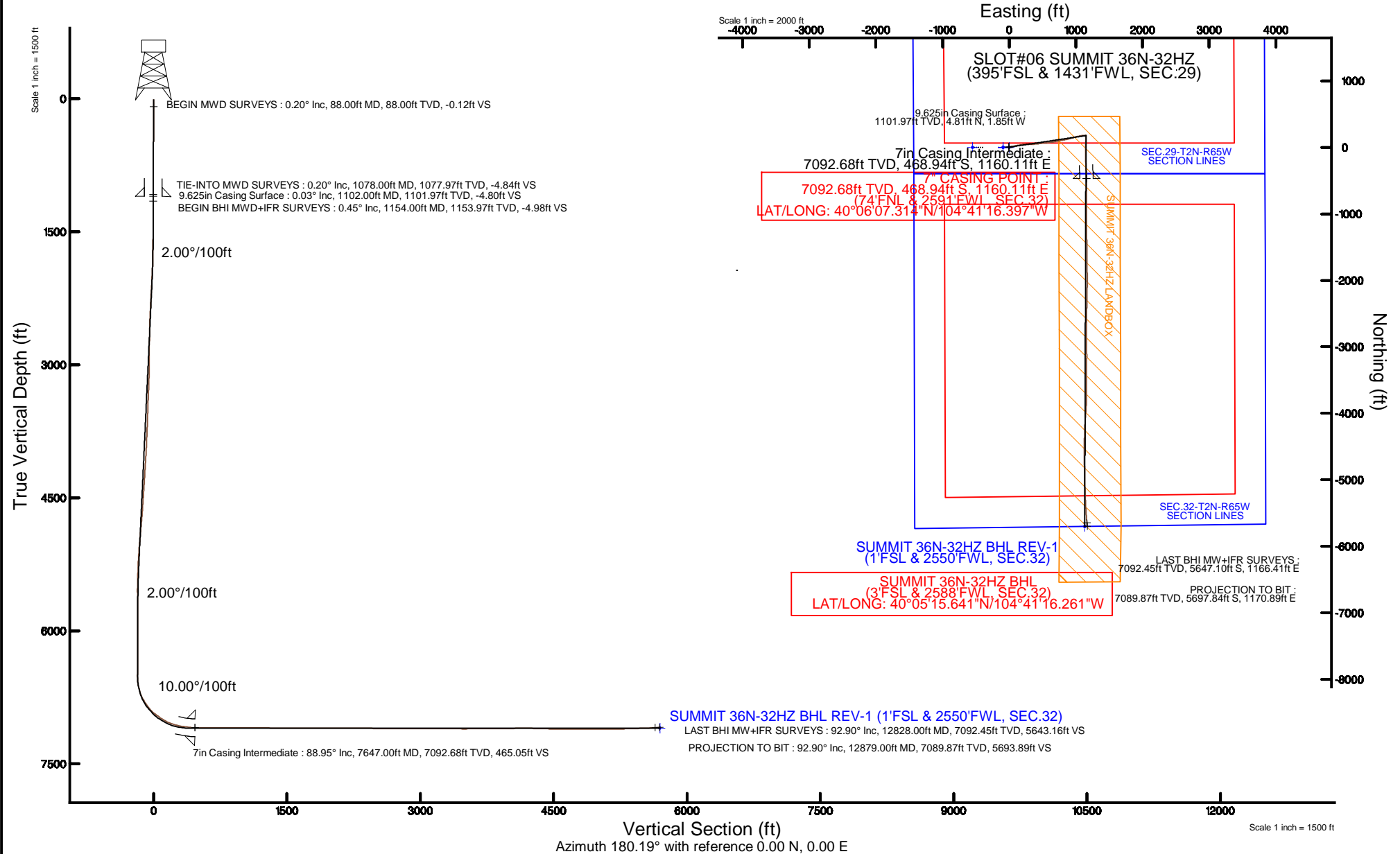


# KERR-MCGEE OIL & GAS ONSHORE LP (LAMBERT STATE PLANE COORD)

Location: COLORADO Slot: SLOT#06 SUMMIT 36N-32HZ (395'FSL & 1431'FWL, SEC.29)  
 Field: WELD COUNTY (KERR MCGEE) Well: SUMMIT 36N-32HZ  
 Facility: SEC.29-T2N-R65W Wellbore: SUMMIT 36N-32HZ PWB

Plot reference wellpath is SUMMIT 36N-32HZ (REV-A.0) PWB

True vertical depths are referenced to XTREME 6 (16'KB) (RKB)	Grid System: NAD83 / Lambert Colorado SP, Northern Zone (501), US feet
Measured depths are referenced to XTREME 6 (16'KB) (RKB)	North Reference: True north
XTREME 6 (16'KB) (RKB) to Mean Sea Level: 4957 feet	Scale: True distance
Mean Sea Level to Mud line (At Slot: SLOT#06 SUMMIT 36N-32HZ (395'FSL & 1431'FWL, SEC.29)): 0 feet	Depths are in feet
Coordinates are in feet referenced to Slot	Created by: amarcar on 19/Feb/2015



REFERENCE WELLPATH IDENTIFICATION			
Operator	KERR-MCGEE OIL & GAS ONSHORE LP (LAMBERT STATE PLANE COORD)	Slot	SLOT#06 SUMMIT 36N-32HZ (395'FSL & 1431'FWL, SEC.29)
Area	COLORADO	Well	SUMMIT 36N-32HZ
Field	WELD COUNTY (KERR MCGEE)	Wellbore	SUMMIT 36N-32HZ AWB (88'-12879'MD)
Facility	SEC.29-T2N-R65W		

REPORT SETUP INFORMATION			
Projection System	NAD83 / Lambert Colorado SP, Northern Zone (501), US feet	Software System	WellArchitect® 4.1.1
North Reference	True	User	Amarcar
Scale	0.99996	Report Generated	19/Feb/2015 at 16:27
Convergence at slot	0.52° East	Database/Source file	WellArchitectDB/SUMMIT_36N-32HZ_AWB_88_-12879_MD_.xml

WELLPATH LOCATION						
	Local coordinates		Grid coordinates		Geographic coordinates	
	North[ft]	East[ft]	Easting[US ft]	Northing[US ft]	Latitude	Longitude
Slot Location	-0.61	90.06	3226008.24	1281513.06	40°06'11.948"N	104°41'31.326"W
Facility Reference Pt			3225918.18	1281512.85	40°06'11.954"N	104°41'32.485"W
Field Reference Pt			3197771.84	1268891.29	40°04'09.600"N	104°47'36.000"W

WELLPATH DATUM			
Calculation method	Minimum curvature	XTREME 6 (16'KB) (RKB) to Facility Vertical Datum	4957.00ft
Horizontal Reference Pt	Slot	XTREME 6 (16'KB) (RKB) to Mean Sea Level	4957.00ft
Vertical Reference Pt	XTREME 6 (16'KB) (RKB)	XTREME 6 (16'KB) (RKB) to Mud Line at Slot (SLOT#06 SUMMIT 36N-32HZ (395'FSL & 1431'FWL, SEC.29))	4957.00ft
MD Reference Pt	XTREME 6 (16'KB) (RKB)	Section Origin	N 0.00, E 0.00 ft
Field Vertical Reference	Mean Sea Level	Section Azimuth	180.19°

REFERENCE WELLPATH IDENTIFICATION			
Operator	KERR-MCGEE OIL & GAS ONSHORE LP (LAMBERT STATE PLANE COORD)	Slot	SLOT#06 SUMMIT 36N-32HZ (395'FSL & 1431'FWL, SEC.29)
Area	COLORADO	Well	SUMMIT 36N-32HZ
Field	WELD COUNTY (KERR MCGEE)	Wellbore	SUMMIT 36N-32HZ AWP (88'-12879'MD)
Facility	SEC.29-T2N-R65W		

WELLPATH DATA (134 stations) † = interpolated/extrapolated station										
MD [ft]	Inclination [°]	Azimuth [°]	TVD [ft]	Vert Sect [ft]	North [ft]	East [ft]	Latitude	Longitude	DLS [°/100ft]	Comments
0.00†	0.000	348.000	0.00	0.00	0.00	0.00	40°06'11.948"N	104°41'31.326"W	0.00	
16.00	0.000	348.000	16.00	0.00	0.00	0.00	40°06'11.948"N	104°41'31.326"W	0.00	
88.00	0.200	348.000	88.00	-0.12	0.12	-0.03	40°06'11.949"N	104°41'31.326"W	0.28	BEGIN MWD SURVEYS
181.00	0.200	344.300	181.00	-0.44	0.44	-0.10	40°06'11.952"N	104°41'31.327"W	0.01	
240.00	0.400	348.200	240.00	-0.74	0.74	-0.17	40°06'11.955"N	104°41'31.328"W	0.34	
320.00	0.400	315.300	320.00	-1.21	1.21	-0.43	40°06'11.960"N	104°41'31.331"W	0.28	
400.00	0.500	321.300	399.99	-1.68	1.68	-0.84	40°06'11.965"N	104°41'31.337"W	0.14	
480.00	0.700	306.600	479.99	-2.24	2.25	-1.45	40°06'11.970"N	104°41'31.345"W	0.31	
560.00	0.700	310.600	559.98	-2.85	2.85	-2.22	40°06'11.976"N	104°41'31.355"W	0.06	
640.00	0.400	307.200	639.98	-3.33	3.34	-2.81	40°06'11.981"N	104°41'31.362"W	0.38	
720.00	0.400	355.900	719.98	-3.78	3.79	-3.05	40°06'11.985"N	104°41'31.365"W	0.41	
800.00	0.700	35.400	799.97	-4.46	4.47	-2.79	40°06'11.992"N	104°41'31.362"W	0.58	
880.00	0.400	52.900	879.97	-5.02	5.03	-2.28	40°06'11.998"N	104°41'31.355"W	0.43	
960.00	0.200	136.200	959.97	-5.09	5.10	-1.96	40°06'11.998"N	104°41'31.351"W	0.53	
1040.00	0.100	148.500	1039.97	-4.93	4.94	-1.83	40°06'11.997"N	104°41'31.350"W	0.13	
1078.00	0.200	200.100	1077.97	-4.84	4.85	-1.84	40°06'11.996"N	104°41'31.350"W	0.42	TIE-INTO MWD SURVEYS
1154.00	0.450	30.270	1153.97	-4.98	4.98	-1.73	40°06'11.997"N	104°41'31.348"W	0.85	BEGIN BHI MWD+IFR SURVEYS
1248.00	0.150	48.990	1247.97	-5.38	5.38	-1.45	40°06'12.001"N	104°41'31.345"W	0.33	
1339.00	1.170	65.950	1338.96	-5.84	5.84	-0.51	40°06'12.006"N	104°41'31.333"W	1.13	
1431.00	2.550	76.400	1430.91	-6.71	6.70	2.33	40°06'12.014"N	104°41'31.296"W	1.54	
1521.00	4.190	94.350	1520.75	-6.95	6.92	7.56	40°06'12.016"N	104°41'31.229"W	2.15	
1612.00	5.680	78.690	1611.42	-7.61	7.56	15.29	40°06'12.023"N	104°41'31.129"W	2.19	
1703.00	7.200	82.450	1701.84	-9.27	9.19	25.36	40°06'12.039"N	104°41'31.000"W	1.73	
1793.00	8.750	88.620	1790.97	-10.22	10.09	37.79	40°06'12.048"N	104°41'30.840"W	1.97	
1884.00	9.820	80.510	1880.78	-11.72	11.54	52.37	40°06'12.062"N	104°41'30.652"W	1.85	
1975.00	10.640	74.730	1970.34	-15.26	15.03	68.13	40°06'12.097"N	104°41'30.449"W	1.44	
2067.00	12.010	76.020	2060.54	-19.87	19.58	85.61	40°06'12.142"N	104°41'30.224"W	1.51	
2159.00	13.260	74.840	2150.31	-25.01	24.65	105.08	40°06'12.192"N	104°41'29.974"W	1.39	
2251.00	13.900	80.090	2239.74	-29.74	29.31	126.15	40°06'12.238"N	104°41'29.703"W	1.51	
2342.00	15.840	78.230	2327.69	-34.23	33.73	149.08	40°06'12.281"N	104°41'29.407"W	2.20	
2432.00	17.770	81.450	2413.85	-38.86	38.28	174.69	40°06'12.326"N	104°41'29.078"W	2.38	
2492.00	16.860	80.040	2471.13	-41.79	41.14	192.32	40°06'12.355"N	104°41'28.851"W	1.67	
2577.00	17.160	88.500	2552.42	-44.33	43.60	217.00	40°06'12.379"N	104°41'28.533"W	2.93	
2662.00	18.130	87.260	2633.42	-45.38	44.57	242.74	40°06'12.388"N	104°41'28.202"W	1.22	
2748.00	16.310	86.230	2715.56	-46.90	46.00	268.16	40°06'12.403"N	104°41'27.875"W	2.15	
2833.00	16.350	85.540	2797.13	-48.69	47.71	292.00	40°06'12.419"N	104°41'27.568"W	0.23	
2918.00	18.470	92.480	2878.24	-49.13	48.06	317.38	40°06'12.423"N	104°41'27.242"W	3.49	
3004.00	17.610	91.890	2960.02	-48.20	47.04	343.99	40°06'12.413"N	104°41'26.899"W	1.02	
3089.00	19.760	86.140	3040.54	-48.83	47.59	371.18	40°06'12.418"N	104°41'26.549"W	3.33	
3174.00	18.530	84.540	3120.84	-51.18	49.84	398.97	40°06'12.440"N	104°41'26.192"W	1.57	
3259.00	17.650	83.660	3201.63	-53.97	52.55	425.22	40°06'12.467"N	104°41'25.854"W	1.08	
3344.00	16.350	81.990	3282.92	-57.14	55.64	449.88	40°06'12.498"N	104°41'25.537"W	1.63	
3429.00	17.240	80.850	3364.29	-60.90	59.31	474.16	40°06'12.534"N	104°41'25.224"W	1.12	
3514.00	18.260	85.010	3445.25	-64.14	62.47	499.86	40°06'12.565"N	104°41'24.893"W	1.91	
3599.00	16.950	84.850	3526.27	-66.50	64.74	525.47	40°06'12.588"N	104°41'24.564"W	1.54	

REFERENCE WELLPATH IDENTIFICATION			
Operator	KERR-MCGEE OIL & GAS ONSHORE LP (LAMBERT STATE PLANE COORD)	Slot	SLOT#06 SUMMIT 36N-32HZ (395'FSL & 1431'FWL, SEC.29)
Area	COLORADO	Well	SUMMIT 36N-32HZ
Field	WELD COUNTY (KERR MCGEE)	Wellbore	SUMMIT 36N-32HZ AWP (88'-12879'MD)
Facility	SEC.29-T2N-R65W		

### WELLPATH DATA (134 stations)

MD [ft]	Inclination [°]	Azimuth [°]	TVD [ft]	Vert Sect [ft]	North [ft]	East [ft]	Latitude	Longitude	DLS ["/100ft]	Comments
3684.00	18.530	86.410	3607.22	-68.54	66.70	551.29	40°06'12.607"N	104°41'24.231"W	1.94	
3768.00	18.870	82.970	3686.79	-71.13	69.20	578.10	40°06'12.632"N	104°41'23.886"W	1.37	
3853.00	17.240	81.900	3767.60	-74.68	72.65	604.21	40°06'12.666"N	104°41'23.550"W	1.96	
3938.00	16.040	81.480	3849.04	-78.27	76.17	628.30	40°06'12.701"N	104°41'23.240"W	1.42	
4023.00	17.230	81.570	3930.48	-81.94	79.75	652.36	40°06'12.736"N	104°41'22.931"W	1.40	
4108.00	16.460	80.600	4011.83	-85.83	83.57	676.70	40°06'12.774"N	104°41'22.618"W	0.96	
4193.00	17.600	77.520	4093.11	-90.66	88.31	701.13	40°06'12.821"N	104°41'22.303"W	1.71	
4279.00	16.860	77.120	4175.25	-96.33	93.90	725.98	40°06'12.876"N	104°41'21.983"W	0.87	
4364.00	19.080	80.720	4256.10	-101.41	98.89	751.71	40°06'12.925"N	104°41'21.652"W	2.92	
4449.00	19.140	79.030	4336.41	-106.39	103.78	779.10	40°06'12.973"N	104°41'21.300"W	0.65	
4534.00	18.120	78.110	4416.96	-111.86	109.16	805.72	40°06'13.027"N	104°41'20.957"W	1.25	
4619.00	17.590	78.700	4497.87	-117.18	114.40	831.24	40°06'13.078"N	104°41'20.629"W	0.66	
4702.00	16.900	78.190	4577.13	-122.19	119.32	855.35	40°06'13.127"N	104°41'20.318"W	0.85	
4787.00	16.710	77.100	4658.50	-127.53	124.58	879.36	40°06'13.179"N	104°41'20.009"W	0.43	
4872.00	19.020	76.010	4739.40	-133.69	130.66	904.71	40°06'13.239"N	104°41'19.683"W	2.75	
4958.00	18.770	75.100	4820.77	-140.72	137.60	931.68	40°06'13.308"N	104°41'19.336"W	0.45	
5043.00	18.050	73.590	4901.42	-148.05	144.84	957.53	40°06'13.379"N	104°41'19.003"W	1.02	
5128.00	17.140	72.750	4982.44	-155.56	152.27	982.12	40°06'13.453"N	104°41'18.687"W	1.11	
5213.00	18.060	75.890	5063.46	-162.57	159.20	1006.86	40°06'13.521"N	104°41'18.369"W	1.56	
5298.00	16.390	79.060	5144.65	-168.14	164.69	1031.42	40°06'13.575"N	104°41'18.053"W	2.25	
5383.00	14.370	79.600	5226.60	-172.40	168.87	1053.57	40°06'13.617"N	104°41'17.767"W	2.38	
5468.00	12.220	80.500	5309.32	-175.85	172.26	1072.82	40°06'13.650"N	104°41'17.520"W	2.54	
5553.00	9.990	78.190	5392.72	-178.90	175.25	1088.91	40°06'13.680"N	104°41'17.313"W	2.67	
5638.00	10.160	82.820	5476.41	-181.40	177.70	1103.57	40°06'13.704"N	104°41'17.124"W	0.97	
5723.00	8.120	92.560	5560.33	-182.11	178.37	1117.00	40°06'13.710"N	104°41'16.951"W	3.00	
5808.00	6.260	94.620	5644.66	-181.50	177.73	1127.62	40°06'13.704"N	104°41'16.814"W	2.21	
5893.00	4.820	90.150	5729.26	-181.15	177.34	1135.81	40°06'13.700"N	104°41'16.709"W	1.77	
5978.00	3.410	108.590	5814.04	-180.35	176.53	1141.78	40°06'13.692"N	104°41'16.632"W	2.25	
6064.00	2.520	121.380	5899.93	-178.57	174.73	1145.82	40°06'13.674"N	104°41'16.580"W	1.28	
6151.00	1.600	82.470	5986.88	-177.74	173.89	1148.65	40°06'13.666"N	104°41'16.544"W	1.87	
6236.00	1.050	77.560	6071.85	-178.07	174.21	1150.59	40°06'13.669"N	104°41'16.519"W	0.66	
6406.00	0.500	30.830	6241.84	-179.05	175.19	1152.49	40°06'13.679"N	104°41'16.494"W	0.47	
6661.00	0.980	342.450	6496.82	-182.08	178.22	1152.40	40°06'13.709"N	104°41'16.496"W	0.29	
6704.00	1.860	176.350	6539.81	-181.74	177.88	1152.34	40°06'13.706"N	104°41'16.496"W	6.56	
6746.00	7.360	173.810	6581.66	-178.38	174.52	1152.67	40°06'13.672"N	104°41'16.492"W	13.10	
6788.00	12.420	176.570	6623.02	-171.19	167.33	1153.23	40°06'13.601"N	104°41'16.485"W	12.10	
6831.00	14.670	178.950	6664.82	-161.13	157.27	1153.61	40°06'13.502"N	104°41'16.480"W	5.39	
6874.00	19.460	181.760	6705.92	-148.52	144.66	1153.49	40°06'13.377"N	104°41'16.482"W	11.30	
6916.00	25.400	182.350	6744.72	-132.51	128.65	1152.90	40°06'13.219"N	104°41'16.489"W	14.15	
6959.00	31.360	182.680	6782.54	-112.10	108.24	1152.00	40°06'13.017"N	104°41'16.501"W	13.87	
7001.00	33.460	184.150	6818.00	-89.63	85.77	1150.65	40°06'12.795"N	104°41'16.518"W	5.34	
7044.00	35.650	183.930	6853.41	-65.30	61.45	1148.94	40°06'12.555"N	104°41'16.540"W	5.10	
7087.00	41.400	182.480	6887.04	-38.56	34.72	1147.46	40°06'12.291"N	104°41'16.559"W	13.54	
7129.00	47.520	180.450	6917.00	-9.17	5.33	1146.74	40°06'12.000"N	104°41'16.569"W	14.96	
7171.00	53.030	178.660	6943.83	23.12	-26.96	1147.01	40°06'11.681"N	104°41'16.565"W	13.52	

REFERENCE WELLPATH IDENTIFICATION			
Operator	KERR-MCGEE OIL & GAS ONSHORE LP (LAMBERT STATE PLANE COORD)	Slot	SLOT#06 SUMMIT 36N-32HZ (395'FSL & 1431'FWL, SEC.29)
Area	COLORADO	Well	SUMMIT 36N-32HZ
Field	WELD COUNTY (KERR MCGEE)	Wellbore	SUMMIT 36N-32HZ AWP (88'-12879'MD)
Facility	SEC.29-T2N-R65W		

WELLPATH DATA (134 stations) † = interpolated/extrapolated station										
MD [ft]	Inclination [°]	Azimuth [°]	TVD [ft]	Vert Sect [ft]	North [ft]	East [ft]	Latitude	Longitude	DLS ["/100ft]	Comments
7214.00	55.360	178.630	6968.99	57.98	-61.82	1147.83	40°06'11.337"N	104°41'16.555"W	5.42	
7256.00	57.020	179.920	6992.36	92.87	-96.71	1148.27	40°06'10.992"N	104°41'16.549"W	4.70	
7299.00	60.400	181.090	7014.69	129.60	-133.45	1147.94	40°06'10.629"N	104°41'16.553"W	8.20	
7341.00	64.620	178.570	7034.07	166.85	-170.70	1148.07	40°06'10.261"N	104°41'16.552"W	11.37	
7384.00	70.610	177.610	7050.44	206.56	-210.42	1149.40	40°06'09.868"N	104°41'16.534"W	14.08	
7426.00	76.290	177.300	7062.40	246.76	-250.62	1151.19	40°06'09.471"N	104°41'16.511"W	13.54	
7469.00	79.660	176.840	7071.36	288.75	-292.61	1153.34	40°06'09.056"N	104°41'16.484"W	7.91	
7511.00	80.720	176.660	7078.51	330.06	-333.93	1155.68	40°06'08.648"N	104°41'16.454"W	2.56	
7554.00	81.310	177.290	7085.24	372.46	-376.35	1157.92	40°06'08.229"N	104°41'16.425"W	1.99	
7610.00	86.450	178.960	7091.20	428.09	-431.98	1159.74	40°06'07.679"N	104°41'16.401"W	9.65	
7647.00†	88.953	179.905	7092.68	465.05	-468.94	1160.11	40°06'07.314"N	104°41'16.397"W	7.23	7" CASING POINT
7657.00	89.630	180.160	7092.81	475.05	-478.94	1160.10	40°06'07.215"N	104°41'16.397"W	7.23	
7723.00	89.780	180.100	7093.15	541.05	-544.94	1159.95	40°06'06.563"N	104°41'16.399"W	0.24	
7893.00	90.920	179.480	7092.11	711.04	-714.93	1160.58	40°06'04.883"N	104°41'16.391"W	0.76	
8064.00	89.960	180.140	7090.79	882.03	-885.92	1161.14	40°06'03.193"N	104°41'16.384"W	0.68	
8233.00	89.380	180.430	7091.77	1051.02	-1054.92	1160.30	40°06'01.523"N	104°41'16.395"W	0.38	
8402.00	88.940	179.690	7094.24	1220.00	-1223.90	1160.12	40°05'59.853"N	104°41'16.397"W	0.51	
8573.00	89.500	177.940	7096.57	1390.93	-1394.84	1163.66	40°05'58.164"N	104°41'16.352"W	1.07	
8743.00	89.230	180.580	7098.46	1560.88	-1564.80	1165.86	40°05'56.484"N	104°41'16.323"W	1.56	
8913.00	90.090	178.600	7099.47	1730.86	-1734.78	1167.07	40°05'54.804"N	104°41'16.308"W	1.27	
9081.00	90.550	179.300	7098.53	1898.82	-1902.75	1170.15	40°05'53.144"N	104°41'16.268"W	0.50	
9252.00	89.370	180.540	7098.65	2069.81	-2073.74	1170.39	40°05'51.455"N	104°41'16.265"W	1.00	
9422.00	90.770	181.120	7098.44	2239.79	-2243.72	1167.93	40°05'49.775"N	104°41'16.297"W	0.89	
9592.00	88.660	181.900	7099.28	2409.73	-2413.65	1163.45	40°05'48.096"N	104°41'16.355"W	1.32	
9762.00	89.070	181.000	7102.65	2579.66	-2583.56	1159.15	40°05'46.417"N	104°41'16.410"W	0.58	
9933.00	89.530	179.870	7104.74	2750.64	-2754.54	1157.85	40°05'44.727"N	104°41'16.427"W	0.71	
10102.00	90.060	178.620	7105.35	2919.61	-2923.52	1160.08	40°05'43.057"N	104°41'16.399"W	0.80	
10273.00	90.030	179.280	7105.21	3090.57	-3094.49	1163.21	40°05'41.368"N	104°41'16.358"W	0.39	
10443.00	90.120	181.730	7104.99	3260.56	-3264.47	1161.71	40°05'39.688"N	104°41'16.378"W	1.44	
10615.00	89.590	180.760	7105.42	3432.52	-3436.42	1157.97	40°05'37.988"N	104°41'16.426"W	0.64	
10785.00	90.800	179.760	7104.85	3602.52	-3606.41	1157.20	40°05'36.309"N	104°41'16.436"W	0.92	
10956.00	90.610	179.490	7102.74	3773.49	-3777.40	1158.32	40°05'34.619"N	104°41'16.422"W	0.19	
11125.00	90.090	184.160	7101.71	3942.38	-3946.26	1152.94	40°05'32.950"N	104°41'16.491"W	2.78	
11296.00	91.170	184.280	7099.83	4112.94	-4116.79	1140.36	40°05'31.265"N	104°41'16.653"W	0.64	
11466.00	87.990	181.360	7101.07	4282.72	-4286.53	1132.00	40°05'29.588"N	104°41'16.761"W	2.54	
11636.00	88.730	180.820	7105.94	4452.62	-4456.43	1128.76	40°05'27.909"N	104°41'16.802"W	0.54	
11806.00	89.260	179.580	7108.92	4622.59	-4626.40	1128.17	40°05'26.229"N	104°41'16.810"W	0.79	
11976.00	90.030	178.830	7109.98	4792.56	-4796.38	1130.53	40°05'24.549"N	104°41'16.780"W	0.63	
12146.00	89.840	179.070	7110.17	4962.52	-4966.35	1133.65	40°05'22.870"N	104°41'16.740"W	0.18	
12317.00	90.990	178.440	7108.93	5133.46	-5137.30	1137.36	40°05'21.180"N	104°41'16.692"W	0.77	
12487.00	91.350	177.300	7105.46	5303.28	-5307.15	1143.68	40°05'19.502"N	104°41'16.611"W	0.70	
12658.00	92.250	176.220	7100.09	5473.89	-5477.78	1153.34	40°05'17.815"N	104°41'16.487"W	0.82	
12828.00	92.900	174.950	7092.45	5643.16	-5647.10	1166.41	40°05'16.142"N	104°41'16.319"W	0.84	LAST BHI MW+IFR SURVEYS
12879.00	92.900	174.950	7089.87	5693.89	-5697.84	1170.89	40°05'15.641"N	104°41'16.261"W	0.00	PROJECTION TO BIT

# Actual Wellpath Report

SUMMIT 36N-32HZ AWP (88'-12879'MD)

REFERENCE WELLPATH IDENTIFICATION			
Operator	KERR-MCGEE OIL & GAS ONSHORE LP (LAMBERT STATE PLANE COORD)	Slot	SLOT#06 SUMMIT 36N-32HZ (395'FSL & 1431'FWL, SEC.29)
Area	COLORADO	Well	SUMMIT 36N-32HZ
Field	WELD COUNTY (KERR MCGEE)	Wellbore	SUMMIT 36N-32HZ AWB (88'-12879'MD)
Facility	SEC.29-T2N-R65W		

HOLE & CASING SECTIONS - Ref Wellbore: SUMMIT 36N-32HZ AWB (88'-12879'MD) Ref Wellpath: SUMMIT 36N-32HZ AWP (88'-12879'MD)									
String/Diameter	Start MD [ft]	End MD [ft]	Interval [ft]	Start TVD [ft]	End TVD [ft]	Start N/S [ft]	Start E/W [ft]	End N/S [ft]	End E/W [ft]
13.5in Open Hole	16.00	1123.00	1107.00	16.00	1122.97	0.00	0.00	4.84	-1.82
9.625in Casing Surface	16.00	1102.00	1086.00	16.00	1101.97	0.00	0.00	4.81	-1.85
8.75in Open Hole	1123.00	7657.00	6534.00	1122.97	7092.81	4.84	-1.82	-478.94	1160.10
7in Casing Intermediate	16.00	7647.00	7631.00	16.00	7092.68	0.00	0.00	-468.94	1160.11
6.125in Open Hole	7657.00	12879.00	5222.00	7092.81	7089.87	-478.94	1160.10	-5697.84	1170.89

TARGETS								
Name	TVD [ft]	North [ft]	East [ft]	Grid East [US ft]	Grid North [US ft]	Latitude	Longitude	Shape
SUMMIT 36N-32HZ BHL REV-1 (1'FSL & 2550'FWL, SEC.32)	7097.00	-5700.05	1133.21	3227193.29	1275823.81	40°05'15.619"N	104°41'16.746"W	point
SUMMIT 36N-32HZ LANDBOX	7097.00	0.00	0.00	3226008.24	1281513.06	40°06'11.948"N	104°41'31.326"W	polygon
SEC.29-T2N-R65W SECTION LINES	7118.00	0.81	-90.06	3225918.18	1281513.05	40°06'11.956"N	104°41'32.485"W	polygon
SEC.32-T2N-R65W SECTION LINES	7118.00	0.81	-90.06	3225918.18	1281513.05	40°06'11.956"N	104°41'32.485"W	polygon
SEC.29-T2N-R65W HARDLINES (460'SETBACKS)	7343.00	0.41	-549.97	3225458.31	1281508.46	40°06'11.952"N	104°41'38.404"W	polygon
SEC.32-T2N-R65W HARDLINES (460'SETBACKS)	7343.00	0.81	-90.06	3225918.18	1281513.05	40°06'11.956"N	104°41'32.485"W	polygon

WELLPATH COMPOSITION - Ref Wellbore: SUMMIT 36N-32HZ AWB (88'-12879'MD) Ref Wellpath: SUMMIT 36N-32HZ AWP (88'-12879'MD)					
Start MD [ft]	End MD [ft]	Positional Uncertainty Model	Log Name/Comment	Wellbore	
16.00	1078.00	ISCWSA MWD, Rev. 2 (Standard)	CATHEDRAL ENERGY MWD SURVEYS 13.5" <88-1078>	SUMMIT 36N-32HZ AWB (88'-12879'MD)	
1078.00	7610.00	NaviTrak (MAGCORR,IFR)	BHI MWD+IFR SURVEYS 8.75" <1154-7610>	SUMMIT 36N-32HZ AWB (88'-12879'MD)	
7610.00	12828.00	NaviTrak (MAGCORR,IFR)	BHI MWD+IFR SURVEYS 6.125" < 7657-12828>	SUMMIT 36N-32HZ AWB (88'-12879'MD)	
12828.00	12879.00	Blind Drilling (std)	Projection to bit	SUMMIT 36N-32HZ AWB (88'-12879'MD)	

REFERENCE WELLPATH IDENTIFICATION			
Operator	KERR-MCGEE OIL & GAS ONSHORE LP (LAMBERT STATE PLANE COORD)	Slot	SLOT#06 SUMMIT 36N-32HZ (395'FSL & 1431'FWL, SEC.29)
Area	COLORADO	Well	SUMMIT 36N-32HZ
Field	WELD COUNTY (KERR MCGEE)	Wellbore	SUMMIT 36N-32HZ AWP (88'-12879'MD)
Facility	SEC.29-T2N-R65W		

WELLPATH COMMENTS					
MD [ft]	Inclination [°]	Azimuth [°]	TVD [ft]		Comment
88.00	0.200	348.000	88.00		BEGIN MWD SURVEYS
1078.00	0.200	200.100	1077.97		TIE-INTO MWD SURVEYS
1154.00	0.450	30.270	1153.97		BEGIN BHI MWD+IFR SURVEYS
7647.00	88.953	179.905	7092.68		7" CASING POINT
12828.00	92.900	174.950	7092.45		LAST BHI MW+IFR SURVEYS
12879.00	92.900	174.950	7089.87		PROJECTION TO BIT