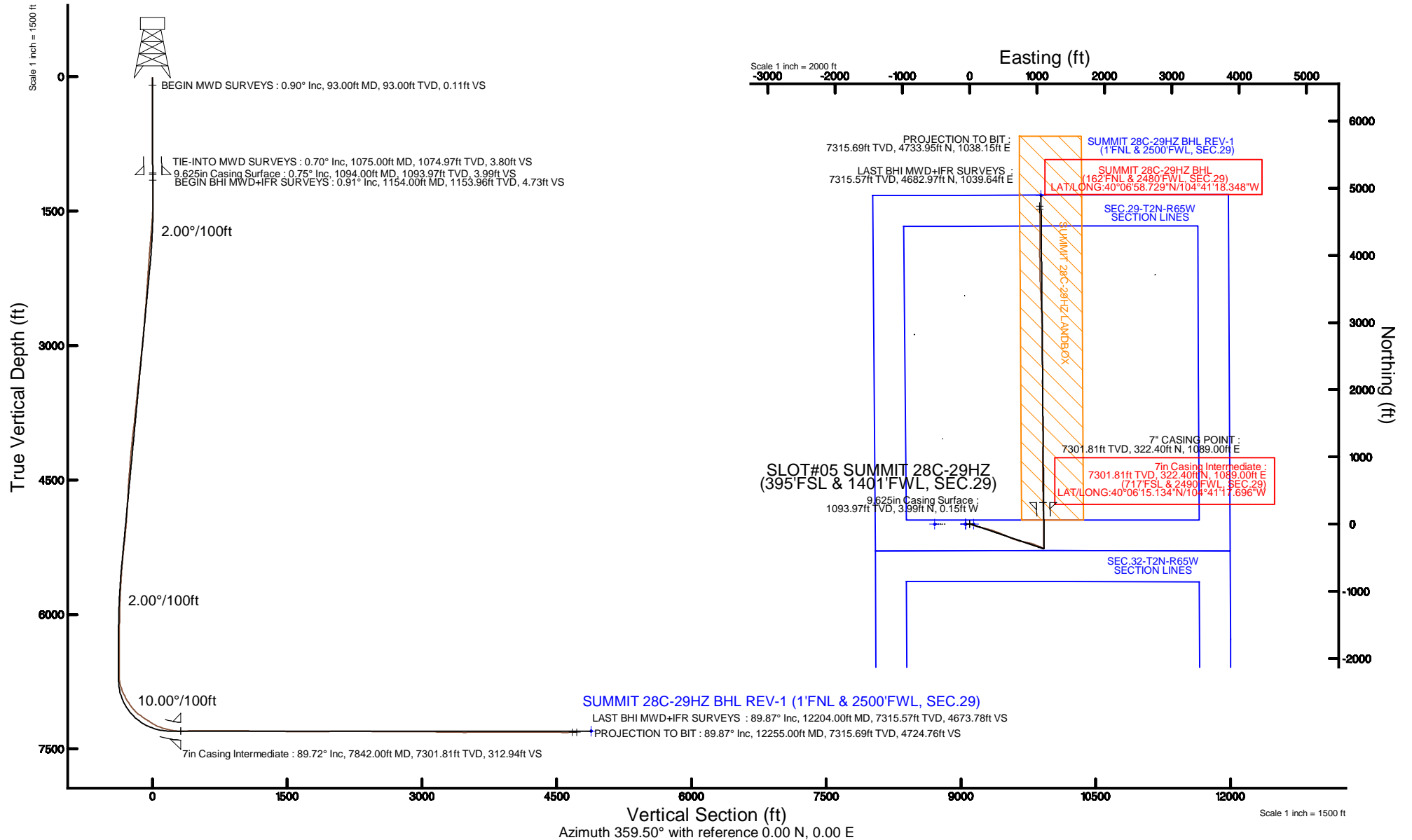


# KERR-MCGEE OIL & GAS ONSHORE LP (LAMBERT STATE PLANE COORD)

Location: COLORADO Slot: SLOT#05 SUMMIT 28C-29HZ (395'FSL & 1401'FWL, SEC.29)  
 Field: WELD COUNTY (KERR MCGEE) Well: SUMMIT 28C-29HZ  
 Facility: SEC.29-T2N-R65W Wellbore: SUMMIT 28C-29HZ PWB

Plot reference wellpath is SUMMIT 28C-29HZ (REV-A.0) PWP

True vertical depths are referenced to XTREME 6 (16'KB) (RKB)	Grid System: NAD83 / Lambert Colorado SP, Northern Zone (501), US feet
Measured depths are referenced to XTREME 6 (16'KB) (RKB)	North Reference: True north
XTREME 6 (16'KB) (RKB) to Mean Sea Level: 4957 feet	Scale: True distance
Mean Sea Level to Mud line (At Slot: SLOT#05 SUMMIT 28C-29HZ (395'FSL & 1401'FWL, SEC.29)): 0 feet	Depths are in feet
Coordinates are in feet referenced to Slot	Created by: amarc on 19/Feb/2015



REFERENCE WELLPATH IDENTIFICATION			
Operator	KERR-MCGEE OIL & GAS ONSHORE LP (LAMBERT STATE PLANE COORD)	Slot	SLOT#05 SUMMIT 28C-29HZ (395'FSL & 1401'FWL, SEC.29)
Area	COLORADO	Well	SUMMIT 28C-29HZ
Field	WELD COUNTY (KERR MCGEE)	Wellbore	SUMMIT 28C-29HZ AWB (93'-12255'MD)
Facility	SEC.29-T2N-R65W		

REPORT SETUP INFORMATION			
Projection System	NAD83 / Lambert Colorado SP, Northern Zone (501), US feet	Software System	WellArchitect® 4.1.1
North Reference	True	User	Amarcar
Scale	0.99996	Report Generated	19/Feb/2015 at 15:38
Convergence at slot	0.52° East	Database/Source file	WellArchitectDB/SUMMIT_28C-29HZ_AWB_93_-12255_MD_.xml

WELLPATH LOCATION						
	Local coordinates		Grid coordinates		Geographic coordinates	
	North[ft]	East[ft]	Easting[US ft]	Northing[US ft]	Latitude	Longitude
Slot Location	-0.61	60.14	3225978.33	1281512.79	40°06'11.948"N	104°41'31.711"W
Facility Reference Pt			3225918.18	1281512.85	40°06'11.954"N	104°41'32.485"W
Field Reference Pt			3197771.84	1268891.29	40°04'09.600"N	104°47'36.000"W

WELLPATH DATUM			
Calculation method	Minimum curvature	XTREME 6 (16'KB) (RKB) to Facility Vertical Datum	4957.00ft
Horizontal Reference Pt	Slot	XTREME 6 (16'KB) (RKB) to Mean Sea Level	4957.00ft
Vertical Reference Pt	XTREME 6 (16'KB) (RKB)	XTREME 6 (16'KB) (RKB) to Mud Line at Slot (SLOT#05 SUMMIT 28C-29HZ (395'FSL & 1401'FWL, SEC.29))	4957.00ft
MD Reference Pt	XTREME 6 (16'KB) (RKB)	Section Origin	N 0.00, E 0.00 ft
Field Vertical Reference	Mean Sea Level	Section Azimuth	359.50°

REFERENCE WELLPATH IDENTIFICATION			
Operator	KERR-MCGEE OIL & GAS ONSHORE LP (LAMBERT STATE PLANE COORD)	Slot	SLOT#05 SUMMIT 28C-29HZ (395'FSL & 1401'FWL, SEC.29)
Area	COLORADO	Well	SUMMIT 28C-29HZ
Field	WELD COUNTY (KERR MCGEE)	Wellbore	SUMMIT 28C-29HZ AWP (93'-12255'MD)
Facility	SEC.29-T2N-R65W		

WELLPATH DATA (140 stations) † = interpolated/extrapolated station										
MD [ft]	Inclination [°]	Azimuth [°]	TVD [ft]	Vert Sect [ft]	North [ft]	East [ft]	Latitude	Longitude	DLS [°/100ft]	Comments
0.00†	0.000	78.900	0.00	0.00	0.00	0.00	40°06'11.948"N	104°41'31.711"W	0.00	
16.00	0.000	78.900	16.00	0.00	0.00	0.00	40°06'11.948"N	104°41'31.711"W	0.00	
93.00	0.900	78.900	93.00	0.11	0.12	0.59	40°06'11.949"N	104°41'31.703"W	1.17	BEGIN MWD SURVEYS
153.00	0.500	79.800	152.99	0.24	0.25	1.31	40°06'11.951"N	104°41'31.694"W	0.67	
240.00	0.600	57.400	239.99	0.55	0.57	2.07	40°06'11.954"N	104°41'31.684"W	0.27	
320.00	0.300	92.100	319.99	0.76	0.78	2.63	40°06'11.956"N	104°41'31.677"W	0.49	
400.00	0.100	192.100	399.99	0.68	0.71	2.83	40°06'11.955"N	104°41'31.675"W	0.42	
480.00	0.100	327.700	479.99	0.67	0.70	2.78	40°06'11.955"N	104°41'31.675"W	0.23	
560.00	0.400	305.300	559.98	0.90	0.92	2.51	40°06'11.957"N	104°41'31.679"W	0.39	
640.00	0.300	303.000	639.98	1.18	1.19	2.11	40°06'11.960"N	104°41'31.684"W	0.13	
720.00	0.300	312.600	719.98	1.44	1.45	1.78	40°06'11.962"N	104°41'31.688"W	0.06	
800.00	0.300	312.200	799.98	1.72	1.73	1.47	40°06'11.965"N	104°41'31.692"W	0.00	
880.00	0.400	307.400	879.98	2.03	2.04	1.09	40°06'11.968"N	104°41'31.697"W	0.13	
960.00	0.500	333.400	959.98	2.52	2.53	0.71	40°06'11.973"N	104°41'31.702"W	0.28	
1040.00	0.900	332.100	1039.97	3.39	3.39	0.26	40°06'11.982"N	104°41'31.708"W	0.50	
1075.00	0.700	319.700	1074.97	3.80	3.80	0.00	40°06'11.986"N	104°41'31.711"W	0.75	TIE-INTO MWD SURVEYS
1154.00	0.910	333.220	1153.96	4.73	4.73	-0.60	40°06'11.995"N	104°41'31.719"W	0.36	BEGIN BHI MWD+IFR SURVEYS
1247.00	1.090	59.130	1246.95	5.84	5.84	-0.17	40°06'12.006"N	104°41'31.713"W	1.47	
1338.00	2.710	92.160	1337.90	6.18	6.20	2.72	40°06'12.009"N	104°41'31.676"W	2.08	
1429.00	3.840	106.840	1428.75	5.17	5.24	7.79	40°06'12.000"N	104°41'31.611"W	1.54	
1519.00	6.490	114.140	1518.38	2.15	2.29	15.31	40°06'11.971"N	104°41'31.514"W	3.03	
1610.00	8.910	118.080	1608.55	-3.36	-3.14	26.23	40°06'11.917"N	104°41'31.373"W	2.72	
1702.00	11.110	112.660	1699.15	-10.26	-9.91	40.69	40°06'11.850"N	104°41'31.187"W	2.60	
1791.00	13.060	112.170	1786.17	-17.51	-17.00	57.92	40°06'11.780"N	104°41'30.966"W	2.19	
1882.00	14.250	108.520	1874.60	-25.12	-24.44	78.06	40°06'11.706"N	104°41'30.706"W	1.61	
1973.00	15.240	105.920	1962.60	-32.15	-31.28	100.19	40°06'11.639"N	104°41'30.422"W	1.31	
2064.00	16.170	105.700	2050.20	-39.06	-37.99	123.89	40°06'11.573"N	104°41'30.117"W	1.02	
2246.00	15.540	101.810	2225.28	-51.33	-49.84	172.15	40°06'11.455"N	104°41'29.496"W	0.68	
2426.00	15.640	103.730	2398.66	-62.43	-60.53	219.32	40°06'11.350"N	104°41'28.889"W	0.29	
2608.00	15.740	105.980	2573.88	-75.46	-73.15	266.89	40°06'11.225"N	104°41'28.276"W	0.34	
2784.00	15.910	106.290	2743.21	-89.20	-86.49	312.99	40°06'11.093"N	104°41'27.683"W	0.11	
2953.00	15.100	109.480	2906.06	-103.41	-100.33	355.98	40°06'10.957"N	104°41'27.130"W	0.70	
3124.00	16.570	111.290	3070.57	-120.07	-116.61	399.70	40°06'10.796"N	104°41'26.567"W	0.91	
3294.00	15.180	110.460	3234.08	-137.03	-133.19	443.14	40°06'10.632"N	104°41'26.008"W	0.83	
3464.00	16.260	112.960	3397.72	-154.47	-150.26	485.91	40°06'10.463"N	104°41'25.458"W	0.75	
3635.00	13.910	111.790	3562.82	-171.79	-167.23	527.04	40°06'10.295"N	104°41'24.928"W	1.39	
3805.00	13.950	113.830	3727.82	-187.98	-183.09	564.76	40°06'10.139"N	104°41'24.443"W	0.29	
3974.00	14.820	117.000	3891.52	-206.36	-201.14	602.66	40°06'09.960"N	104°41'23.955"W	0.69	
4145.00	16.060	110.790	4056.36	-225.04	-219.46	644.26	40°06'09.779"N	104°41'23.420"W	1.21	
4315.00	16.750	105.840	4219.45	-240.47	-234.50	689.81	40°06'09.631"N	104°41'22.834"W	0.92	
4485.00	15.300	106.740	4382.84	-254.01	-247.64	734.86	40°06'09.501"N	104°41'22.254"W	0.87	
4653.00	16.860	101.750	4544.27	-265.75	-258.99	779.94	40°06'09.389"N	104°41'21.674"W	1.24	
4824.00	15.760	99.300	4708.39	-274.96	-267.79	827.14	40°06'09.301"N	104°41'21.067"W	0.76	
4994.00	16.000	103.400	4871.90	-284.51	-276.95	872.72	40°06'09.211"N	104°41'20.480"W	0.67	
5164.00	16.480	104.030	5035.12	-296.19	-288.23	918.90	40°06'09.100"N	104°41'19.886"W	0.30	

REFERENCE WELLPATH IDENTIFICATION			
Operator	KERR-MCGEE OIL & GAS ONSHORE LP (LAMBERT STATE PLANE COORD)	Slot	SLOT#05 SUMMIT 28C-29HZ (395'FSL & 1401'FWL, SEC.29)
Area	COLORADO	Well	SUMMIT 28C-29HZ
Field	WELD COUNTY (KERR MCGEE)	Wellbore	SUMMIT 28C-29HZ AWP (93'-12255'MD)
Facility	SEC.29-T2N-R65W		

WELLPATH DATA (140 stations) † = interpolated/extrapolated station										
MD [ft]	Inclination [°]	Azimuth [°]	TVD [ft]	Vert Sect [ft]	North [ft]	East [ft]	Latitude	Longitude	DLS ["/100ft]	Comments
5334.00	16.450	113.700	5198.18	-312.11	-303.75	964.34	40°06'08.946"N	104°41'19.301"W	1.61	
5419.00	15.860	112.470	5279.82	-321.57	-313.03	986.10	40°06'08.854"N	104°41'19.021"W	0.80	
5504.00	13.850	111.250	5361.98	-329.87	-321.16	1006.31	40°06'08.774"N	104°41'18.761"W	2.39	
5590.00	12.950	110.730	5445.64	-337.18	-328.30	1024.92	40°06'08.703"N	104°41'18.521"W	1.06	
5675.00	10.780	111.830	5528.81	-343.65	-334.63	1041.21	40°06'08.641"N	104°41'18.312"W	2.57	
5759.00	9.620	109.970	5611.49	-349.08	-339.94	1055.10	40°06'08.588"N	104°41'18.133"W	1.44	
5845.00	7.690	115.210	5696.50	-354.09	-344.85	1067.06	40°06'08.540"N	104°41'17.979"W	2.42	
5930.00	6.580	116.620	5780.84	-358.78	-349.46	1076.56	40°06'08.494"N	104°41'17.857"W	1.32	
6015.00	4.430	109.380	5865.45	-362.12	-352.73	1084.01	40°06'08.462"N	104°41'17.761"W	2.65	
6100.00	3.620	104.440	5950.24	-363.92	-354.49	1089.71	40°06'08.445"N	104°41'17.688"W	1.04	
6185.00	3.080	112.980	6035.09	-365.53	-356.05	1094.41	40°06'08.429"N	104°41'17.627"W	0.86	
6272.00	2.710	109.080	6121.98	-367.15	-357.63	1098.50	40°06'08.414"N	104°41'17.575"W	0.48	
6357.00	2.300	120.450	6206.90	-368.70	-359.15	1101.87	40°06'08.399"N	104°41'17.531"W	0.76	
6442.00	0.090	110.300	6291.88	-369.60	-360.04	1103.41	40°06'08.390"N	104°41'17.511"W	2.60	
6613.00	0.270	97.570	6462.88	-369.70	-360.14	1103.93	40°06'08.389"N	104°41'17.505"W	0.11	
6783.00	0.230	170.180	6632.88	-370.09	-360.53	1104.39	40°06'08.385"N	104°41'17.499"W	0.18	
6826.00	0.300	233.220	6675.87	-370.25	-360.68	1104.31	40°06'08.383"N	104°41'17.500"W	0.66	
6868.00	4.370	347.050	6717.83	-368.75	-359.19	1103.86	40°06'08.398"N	104°41'17.506"W	10.71	
6911.00	10.660	353.340	6760.44	-363.19	-353.63	1103.03	40°06'08.453"N	104°41'17.516"W	14.73	
6954.00	16.500	353.370	6802.22	-353.15	-343.61	1101.87	40°06'08.552"N	104°41'17.531"W	13.58	
6996.00	21.360	354.400	6841.94	-339.60	-330.06	1100.43	40°06'08.686"N	104°41'17.550"W	11.60	
7039.00	24.560	356.230	6881.53	-322.87	-313.35	1099.08	40°06'08.851"N	104°41'17.567"W	7.62	
7082.00	27.960	356.900	6920.09	-303.87	-294.36	1097.95	40°06'09.039"N	104°41'17.582"W	7.94	
7124.00	30.280	357.160	6956.78	-283.46	-273.95	1096.89	40°06'09.241"N	104°41'17.595"W	5.53	
7167.00	33.680	358.860	6993.24	-260.69	-251.20	1096.11	40°06'09.465"N	104°41'17.605"W	8.18	
7210.00	36.390	358.280	7028.45	-236.02	-226.52	1095.49	40°06'09.709"N	104°41'17.613"W	6.35	
7252.00	41.420	359.160	7061.12	-209.65	-200.16	1094.92	40°06'09.970"N	104°41'17.621"W	12.05	
7295.00	47.270	358.750	7091.86	-179.61	-170.12	1094.36	40°06'10.267"N	104°41'17.628"W	13.62	
7337.00	53.410	359.670	7118.65	-147.29	-137.81	1093.93	40°06'10.586"N	104°41'17.633"W	14.72	
7380.00	55.390	359.760	7143.69	-112.33	-102.85	1093.76	40°06'10.931"N	104°41'17.635"W	4.61	
7422.00	56.740	359.940	7167.13	-77.48	-68.00	1093.66	40°06'11.276"N	104°41'17.637"W	3.23	
7465.00	57.080	359.910	7190.61	-41.46	-31.97	1093.62	40°06'11.632"N	104°41'17.637"W	0.79	
7507.00	58.370	0.540	7213.03	-5.95	3.53	1093.76	40°06'11.983"N	104°41'17.635"W	3.32	
7550.00	62.140	0.650	7234.36	31.37	40.86	1094.15	40°06'12.352"N	104°41'17.630"W	8.77	
7592.00	68.150	0.760	7252.01	69.45	78.95	1094.62	40°06'12.728"N	104°41'17.624"W	14.31	
7635.00	71.770	0.490	7266.74	109.83	119.34	1095.06	40°06'13.127"N	104°41'17.619"W	8.44	
7677.00	75.940	358.650	7278.42	150.17	159.67	1094.75	40°06'13.526"N	104°41'17.623"W	10.78	
7720.00	77.830	357.480	7288.18	192.03	201.52	1093.33	40°06'13.939"N	104°41'17.641"W	5.13	
7763.00	80.740	357.320	7296.17	234.25	243.72	1091.41	40°06'14.356"N	104°41'17.665"W	6.78	
7805.00	86.850	358.240	7300.71	275.96	285.42	1089.80	40°06'14.768"N	104°41'17.686"W	14.71	
7842.00†	89.721	359.276	7301.81	312.94	322.40	1089.00	40°06'15.134"N	104°41'17.696"W	8.25	7" CASING POINT
7855.00	90.730	359.640	7301.76	325.94	335.39	1088.87	40°06'15.262"N	104°41'17.698"W	8.25	
7898.00	91.140	359.000	7301.06	368.93	378.39	1088.36	40°06'15.687"N	104°41'17.705"W	1.77	
7983.00	90.400	359.330	7299.92	453.92	463.37	1087.13	40°06'16.527"N	104°41'17.720"W	0.95	
8069.00	89.750	359.640	7299.81	539.92	549.36	1086.35	40°06'17.377"N	104°41'17.730"W	0.84	

REFERENCE WELLPATH IDENTIFICATION			
Operator	KERR-MCGEE OIL & GAS ONSHORE LP (LAMBERT STATE PLANE COORD)	Slot	SLOT#05 SUMMIT 28C-29HZ (395'FSL & 1401'FWL, SEC.29)
Area	COLORADO	Well	SUMMIT 28C-29HZ
Field	WELD COUNTY (KERR MCGEE)	Wellbore	SUMMIT 28C-29HZ AWB (93'-12255'MD)
Facility	SEC.29-T2N-R65W		

WELLPATH DATA (140 stations)										
MD [ft]	Inclination [°]	Azimuth [°]	TVD [ft]	Vert Sect [ft]	North [ft]	East [ft]	Latitude	Longitude	DLS ["/100ft]	Comments
8153.00	90.730	359.090	7299.46	623.92	633.36	1085.42	40°06'18.207"N	104°41'17.742"W	1.34	
8238.00	89.290	0.490	7299.44	708.91	718.35	1085.11	40°06'19.047"N	104°41'17.746"W	2.36	
8322.00	89.630	0.170	7300.23	792.90	802.35	1085.59	40°06'19.877"N	104°41'17.740"W	0.56	
8408.00	90.830	359.960	7299.89	878.89	888.34	1085.69	40°06'20.727"N	104°41'17.739"W	1.42	
8493.00	90.270	0.390	7299.07	963.88	973.34	1085.95	40°06'21.566"N	104°41'17.735"W	0.83	
8578.00	88.360	0.220	7300.09	1048.86	1058.33	1086.40	40°06'22.406"N	104°41'17.729"W	2.26	
8663.00	88.890	0.320	7302.13	1133.83	1143.30	1086.80	40°06'23.246"N	104°41'17.724"W	0.63	
8748.00	90.000	0.080	7302.95	1218.82	1228.30	1087.10	40°06'24.086"N	104°41'17.720"W	1.34	
8833.00	89.620	0.100	7303.23	1303.82	1313.30	1087.23	40°06'24.926"N	104°41'17.719"W	0.45	
8918.00	89.070	359.230	7304.20	1388.81	1398.29	1086.74	40°06'25.766"N	104°41'17.725"W	1.21	
9001.00	89.010	359.540	7305.59	1471.80	1481.27	1085.85	40°06'26.586"N	104°41'17.736"W	0.38	
9087.00	88.140	358.500	7307.73	1557.76	1567.23	1084.38	40°06'27.435"N	104°41'17.755"W	1.58	
9172.00	90.270	359.800	7308.91	1642.75	1652.21	1083.12	40°06'28.275"N	104°41'17.771"W	2.94	
9257.00	90.460	359.840	7308.37	1727.75	1737.20	1082.85	40°06'29.115"N	104°41'17.775"W	0.23	
9343.00	89.900	359.450	7308.10	1813.74	1823.20	1082.32	40°06'29.965"N	104°41'17.782"W	0.79	
9427.00	90.920	359.270	7307.50	1897.74	1907.19	1081.38	40°06'30.795"N	104°41'17.794"W	1.23	
9513.00	91.610	359.760	7305.60	1983.72	1993.17	1080.65	40°06'31.645"N	104°41'17.806"W	0.98	
9598.00	90.580	359.680	7303.98	2068.70	2078.15	1080.24	40°06'32.484"N	104°41'17.808"W	1.22	
9683.00	89.900	0.260	7303.62	2153.70	2163.15	1080.19	40°06'33.324"N	104°41'17.809"W	1.05	
9768.00	89.720	0.000	7303.90	2238.69	2248.15	1080.38	40°06'34.164"N	104°41'17.806"W	0.37	
9852.00	90.550	359.980	7303.70	2322.69	2332.15	1080.37	40°06'34.994"N	104°41'17.806"W	0.99	
9938.00	88.140	359.760	7304.69	2408.67	2418.13	1080.17	40°06'35.844"N	104°41'17.809"W	2.81	
10023.00	87.620	359.240	7307.83	2493.61	2503.07	1079.43	40°06'36.683"N	104°41'17.818"W	0.86	
10108.00	89.660	0.010	7309.85	2578.59	2588.04	1078.88	40°06'37.523"N	104°41'17.825"W	2.57	
10193.00	91.010	359.930	7309.35	2663.58	2673.04	1078.83	40°06'38.363"N	104°41'17.826"W	1.59	
10278.00	91.880	359.790	7307.21	2748.55	2758.01	1078.62	40°06'39.203"N	104°41'17.829"W	1.04	
10363.00	88.270	357.880	7307.10	2833.53	2842.97	1076.90	40°06'40.042"N	104°41'17.851"W	4.80	
10448.00	89.410	359.040	7308.82	2918.49	2927.92	1074.61	40°06'40.882"N	104°41'17.880"W	1.91	
10534.00	90.120	358.730	7309.17	3004.49	3013.91	1072.94	40°06'41.732"N	104°41'17.902"W	0.90	
10618.00	89.290	358.040	7309.60	3088.47	3097.87	1070.57	40°06'42.561"N	104°41'17.932"W	1.28	
10706.00	89.040	357.260	7310.89	3176.41	3185.79	1066.96	40°06'43.430"N	104°41'17.978"W	0.93	
10791.00	88.390	357.110	7312.79	3261.32	3270.66	1062.79	40°06'44.269"N	104°41'18.032"W	0.78	
10876.00	89.530	357.240	7314.34	3346.23	3355.54	1058.60	40°06'45.108"N	104°41'18.086"W	1.35	
10961.00	89.040	356.630	7315.40	3431.14	3440.41	1054.06	40°06'45.946"N	104°41'18.144"W	0.92	
11046.00	90.860	357.620	7315.47	3516.06	3525.30	1049.79	40°06'46.785"N	104°41'18.199"W	2.44	
11131.00	90.590	358.290	7314.39	3601.02	3610.24	1046.76	40°06'47.625"N	104°41'18.238"W	0.85	
11216.00	89.350	358.230	7314.44	3686.00	3695.20	1044.18	40°06'48.464"N	104°41'18.271"W	1.46	
11302.00	89.440	358.460	7315.35	3771.98	3781.16	1041.70	40°06'49.314"N	104°41'18.303"W	0.29	
11387.00	90.830	0.320	7315.15	3856.97	3866.15	1040.79	40°06'50.154"N	104°41'18.315"W	2.73	
11472.00	89.840	359.020	7314.65	3941.97	3951.14	1040.30	40°06'50.994"N	104°41'18.321"W	1.92	
11558.00	89.410	0.140	7315.21	4027.97	4037.14	1039.67	40°06'51.843"N	104°41'18.329"W	1.39	
11643.00	91.530	1.820	7314.52	4112.93	4122.11	1041.13	40°06'52.683"N	104°41'18.310"W	3.18	
11728.00	88.820	0.750	7314.26	4197.88	4207.08	1043.03	40°06'53.523"N	104°41'18.286"W	3.43	
11813.00	89.560	0.970	7315.46	4282.84	4292.06	1044.31	40°06'54.363"N	104°41'18.269"W	0.91	
11898.00	90.240	0.620	7315.61	4367.82	4377.05	1045.49	40°06'55.202"N	104°41'18.254"W	0.90	

REFERENCE WELLPATH IDENTIFICATION			
Operator	KERR-MCGEE OIL & GAS ONSHORE LP (LAMBERT STATE PLANE COORD)	Slot	SLOT#05 SUMMIT 28C-29HZ (395'FSL & 1401'FWL, SEC.29)
Area	COLORADO	Well	SUMMIT 28C-29HZ
Field	WELD COUNTY (KERR MCGEE)	Wellbore	SUMMIT 28C-29HZ AWB (93'-12255'MD)
Facility	SEC.29-T2N-R65W		

WELLPATH DATA (140 stations)										
MD [ft]	Inclination [°]	Azimuth [°]	TVD [ft]	Vert Sect [ft]	North [ft]	East [ft]	Latitude	Longitude	DLS [°/100ft]	Comments
11983.00	90.520	358.990	7315.04	4452.82	4462.05	1045.20	40°06'56.042"N	104°41'18.258"W	1.95	
12068.00	88.980	358.050	7315.41	4537.80	4547.02	1043.00	40°06'56.882"N	104°41'18.286"W	2.12	
12153.00	90.550	359.010	7315.76	4622.78	4631.98	1040.82	40°06'57.722"N	104°41'18.314"W	2.16	
12204.00	89.870	358.330	7315.57	4673.78	4682.97	1039.64	40°06'58.226"N	104°41'18.329"W	1.89	LAST BHI MWD+IFR SURVEYS
12255.00	89.870	358.330	7315.69	4724.76	4733.95	1038.15	40°06'58.729"N	104°41'18.348"W	0.00	PROJECTION TO BIT

HOLE & CASING SECTIONS - Ref Wellbore: SUMMIT 28C-29HZ AWB (93'-12255'MD) Ref Wellpath: SUMMIT 28C-29HZ AWP (93'-12255'MD)									
String/Diameter	Start MD [ft]	End MD [ft]	Interval [ft]	Start TVD [ft]	End TVD [ft]	Start N/S [ft]	Start E/W [ft]	End N/S [ft]	End E/W [ft]
13.5in Open Hole	16.00	1120.00	1104.00	16.00	1119.96	0.00	0.00	4.28	-0.35
9.625in Casing Surface	16.00	1094.00	1078.00	16.00	1093.97	0.00	0.00	3.99	-0.15
8.75in Open Hole	1120.00	7852.00	6732.00	1119.96	7301.80	4.28	-0.35	332.39	1088.90
7in Casing Intermediate	16.00	7842.00	7826.00	16.00	7301.81	0.00	0.00	322.40	1089.00
6.125in Open Hole	7852.00	12255.00	4403.00	7301.80	7315.69	332.39	1088.90	4733.95	1038.15

TARGETS								
Name	TVD [ft]	North [ft]	East [ft]	Grid East [US ft]	Grid North [US ft]	Latitude	Longitude	Shape
SEC.29-T2N-R65W SECTION LINES	7118.00	0.81	-60.14	3225918.18	1281513.05	40°06'11.956"N	104°41'32.485"W	polygon
SEC.32-T2N-R65W SECTION LINES	7118.00	0.81	-60.14	3225918.18	1281513.05	40°06'11.956"N	104°41'32.485"W	polygon
SUMMIT 28C-29HZ BHL REV-1 (1'FNL & 2500'FWL, SEC.29)	7302.00	4894.71	1058.30	3226991.95	1286416.73	40°07'00.318"N	104°41'18.089"W	point
SUMMIT 28C-29HZ LANDBOX	7302.00	0.81	59.83	3226038.15	1281514.14	40°06'11.956"N	104°41'30.941"W	polygon
SEC.29-T2N-R65W HARDLINES (460'SETBACKS)	7343.00	0.41	-520.05	3225458.31	1281508.46	40°06'11.952"N	104°41'38.404"W	polygon
SEC.32-T2N-R65W HARDLINES (460'SETBACKS)	7343.00	0.81	-60.14	3225918.18	1281513.05	40°06'11.956"N	104°41'32.485"W	polygon

WELLPATH COMPOSITION - Ref Wellbore: SUMMIT 28C-29HZ AWB (93'-12255'MD) Ref Wellpath: SUMMIT 28C-29HZ AWP (93'-12255'MD)					
Start MD [ft]	End MD [ft]	Positional Uncertainty Model	Log Name/Comment	Wellbore	
16.00	1075.00	ISCWSA MWD, Rev. 2 (Standard)	CATHEDRAL ENERGY MWD SURVEYS 13.5" <93-1075>	SUMMIT 28C-29HZ AWB (93'-12255'MD)	
1075.00	7805.00	NaviTrak (MAGCORR,IFR)	BHI MWD+IFR SURVEYS 8.75" <1154-7805>	SUMMIT 28C-29HZ AWB (93'-12255'MD)	
7805.00	12204.00	NaviTrak (MAGCORR,IFR)	BHI MWD+IFR SURVEYS 6.125" <7855-12204>	SUMMIT 28C-29HZ AWB (93'-12255'MD)	
12204.00	12255.00	Blind Drilling (std)	Projection to bit	SUMMIT 28C-29HZ AWB (93'-12255'MD)	

**REFERENCE WELLPATH IDENTIFICATION**

Operator	KERR-MCGEE OIL & GAS ONSHORE LP (LAMBERT STATE PLANE COORD)	Slot	SLOT#05 SUMMIT 28C-29HZ (395'FSL & 1401'FWL, SEC.29)
Area	COLORADO	Well	SUMMIT 28C-29HZ
Field	WELD COUNTY (KERR MCGEE)	Wellbore	SUMMIT 28C-29HZ AWP (93'-12255'MD)
Facility	SEC.29-T2N-R65W		

**WELLPATH COMMENTS**

MD [ft]	Inclination [°]	Azimuth [°]	TVD [ft]	Comment
93.00	0.900	78.900	93.00	BEGIN MWD SURVEYS
1075.00	0.700	319.700	1074.97	TIE-INTO MWD SURVEYS
1154.00	0.910	333.220	1153.96	BEGIN BHI MWD+IFR SURVEYS
7842.00	89.721	359.276	7301.81	7" CASING POINT
12204.00	89.870	358.330	7315.57	LAST BHI MWD+IFR SURVEYS
12255.00	89.870	358.330	7315.69	PROJECTION TO BIT