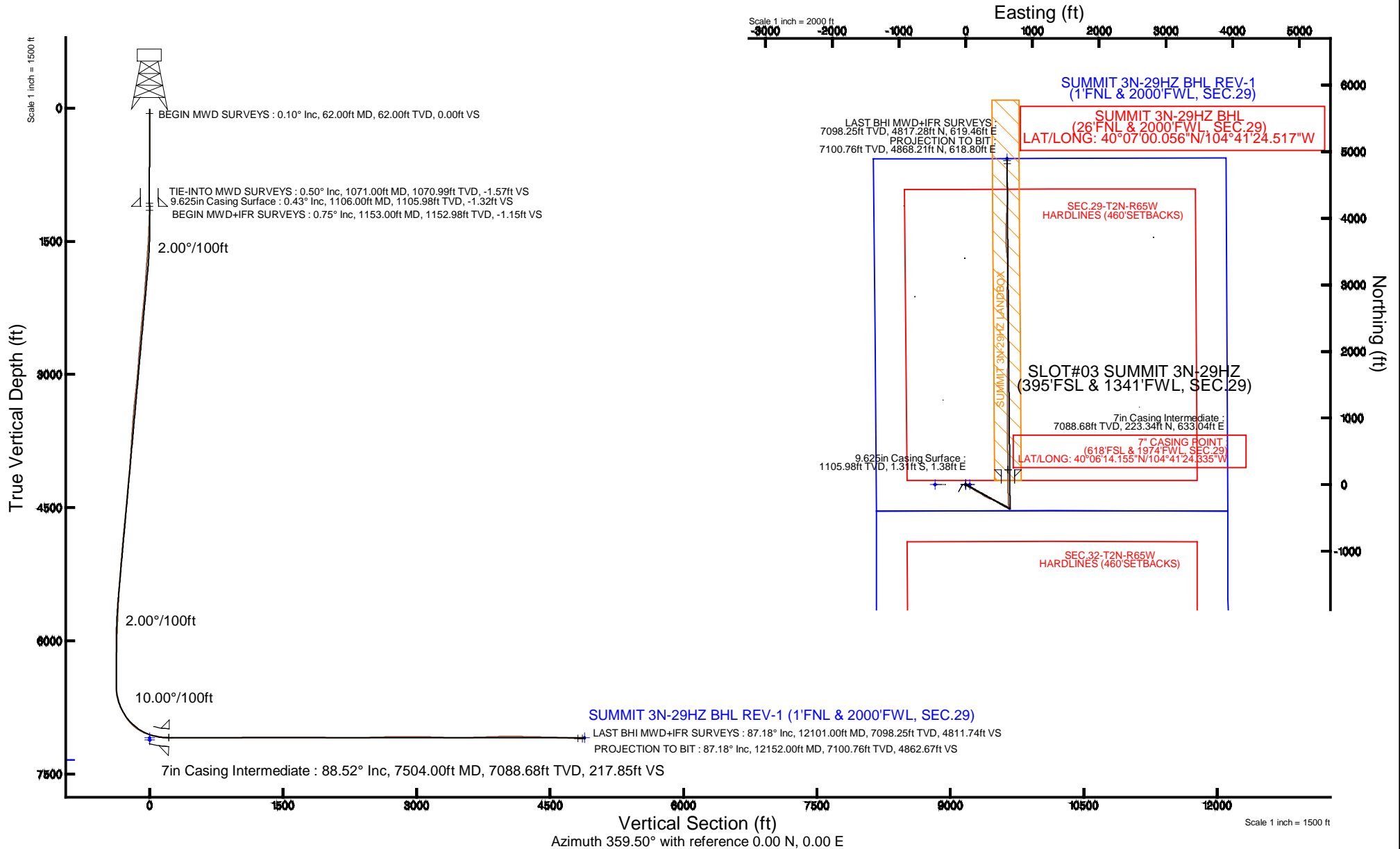


KERR-MCGEE OIL & GAS ONSHORE LP

Location: COLORADO Slot: SLOT#03 SUMMIT 3N-29HZ (395'FSL & 1341'FWL, SEC.29)
 Field: WELD COUNTY (KERR MCGEE) Well: SUMMIT 3N-29HZ
 Facility: SEC.29-T2N-R65W Wellbore: SUMMIT 3N-29HZ PWB

Plot reference wellpath is SUMMIT 3N-29HZ (REV-A.0) PWP	
True vertical depths are referenced to XTREME 6 (16'KB) (RKB)	Grid System: NAD83 / Lambert Colorado SP, Northern Zone (501), US feet
Measured depths are referenced to XTREME 6 (16'KB) (RKB)	North Reference: True north
XTREME 6 (16'KB) (RKB) to Mean Sea Level: 4957 feet	Scale: True distance
Mean Sea Level to Mud line (At Slot: SLOT#03 SUMMIT 3N-29HZ (395'FSL & 1341'FWL, SEC.29)): 0 feet	Depths are in feet
Coordinates are in feet referenced to Slot	Created by: amarcar on 1/7/2015



REFERENCE WELLPATH IDENTIFICATION			
Operator	KERR-MCGEE OIL & GAS ONSHORE LP	Slot	SLOT#03 SUMMIT 3N-29HZ (395'FSL & 1341'FWL, SEC.29)
Area	COLORADO	Well	SUMMIT 3N-29HZ
Field	WELD COUNTY (KERR MCGEE)	Wellbore	SUMMIT 3N-29HZ AWP (62'-12152'MD)
Facility	SEC.29-T2N-R65W		

REPORT SETUP INFORMATION			
Projection System	NAD83 / Lambert Colorado SP, Northern Zone (501), US feet	Software System	WellArchitect® 4.0.0
North Reference	True	User	Amarcar
Scale	0.99996	Report Generated	1/7/2015 at 10:41:46 AM
Convergence at slot	n/a	Database/Source file	WellArchitectDB/SUMMIT_3N-29HZ_AWP_62_-12152_MD_.xml

WELLPATH LOCATION						
	Local coordinates		Grid coordinates		Geographic coordinates	
	North[ft]	East[ft]	Easting[US ft]	Northing[US ft]	Latitude	Longitude
Slot Location	-0.61	0.23	3225918.42	1281512.24	40°06'11.948"N	104°41'32.482"W
Facility Reference Pt			3225918.18	1281512.85	40°06'11.954"N	104°41'32.485"W
Field Reference Pt			3197771.84	1268891.29	40°04'09.600"N	104°47'36.000"W

WELLPATH DATUM			
Calculation method	Minimum curvature	XTREME 6 (16'KB) (RKB) to Facility Vertical Datum	4957.00ft
Horizontal Reference Pt	Slot	XTREME 6 (16'KB) (RKB) to Mean Sea Level	4957.00ft
Vertical Reference Pt	XTREME 6 (16'KB) (RKB)	XTREME 6 (16'KB) (RKB) to Mud Line at Slot (SLOT#03 SUMMIT 3N-29HZ (395'FSL & 1341'FWL, SEC.29))	4957.00ft
MD Reference Pt	XTREME 6 (16'KB) (RKB)	Section Origin	N 0.00, E 0.00 ft
Field Vertical Reference	Mean Sea Level	Section Azimuth	359.50°

REFERENCE WELLPATH IDENTIFICATION			
Operator	KERR-MCGEE OIL & GAS ONSHORE LP	Slot	SLOT#03 SUMMIT 3N-29HZ (395'FSL & 1341'FWL, SEC.29)
Area	COLORADO	Well	SUMMIT 3N-29HZ
Field	WELD COUNTY (KERR MCGEE)	Wellbore	SUMMIT 3N-29HZ AWP (62'-12152'MD)
Facility	SEC.29-T2N-R65W		

WELLPATH DATA (119 stations) † = interpolated/extrapolated station										
MD [ft]	Inclination [°]	Azimuth [°]	TVD [ft]	Vert Sect [ft]	North [ft]	East [ft]	Latitude	Longitude	DLS [°/100ft]	Comments
0.00†	0.000	86.600	0.00	0.00	0.00	0.00	40°06'11.948"N	104°41'32.482"W	0.00	
16.00	0.000	86.600	16.00	0.00	0.00	0.00	40°06'11.948"N	104°41'32.482"W	0.00	
62.00	0.100	86.600	62.00	0.00	0.00	0.04	40°06'11.948"N	104°41'32.481"W	0.22	BEGIN MWD SURVEYS
153.00	0.300	86.500	153.00	0.02	0.02	0.36	40°06'11.948"N	104°41'32.477"W	0.22	
240.00	0.400	142.400	240.00	-0.21	-0.21	0.77	40°06'11.946"N	104°41'32.472"W	0.39	
320.00	0.300	112.000	320.00	-0.51	-0.50	1.13	40°06'11.943"N	104°41'32.467"W	0.26	
400.00	0.100	65.600	400.00	-0.57	-0.55	1.39	40°06'11.943"N	104°41'32.464"W	0.30	
480.00	0.100	119.600	480.00	-0.57	-0.56	1.52	40°06'11.942"N	104°41'32.462"W	0.11	
560.00	0.400	178.800	560.00	-0.89	-0.87	1.58	40°06'11.939"N	104°41'32.462"W	0.45	
640.00	0.300	158.800	639.99	-1.36	-1.35	1.66	40°06'11.935"N	104°41'32.461"W	0.20	
720.00	0.300	193.200	719.99	-1.76	-1.75	1.69	40°06'11.931"N	104°41'32.460"W	0.22	
800.00	0.300	187.200	799.99	-2.17	-2.16	1.62	40°06'11.927"N	104°41'32.461"W	0.04	
880.00	0.300	153.600	879.99	-2.57	-2.55	1.69	40°06'11.923"N	104°41'32.460"W	0.22	
960.00	0.600	322.800	959.99	-2.42	-2.41	1.53	40°06'11.924"N	104°41'32.462"W	1.12	
1040.00	0.400	7.700	1039.99	-1.81	-1.80	1.31	40°06'11.930"N	104°41'32.465"W	0.53	
1071.00	0.500	353.100	1070.99	-1.57	-1.56	1.31	40°06'11.933"N	104°41'32.465"W	0.49	TIE-INTO MWD SURVEYS
1153.00	0.750	82.470	1152.98	-1.15	-1.13	1.80	40°06'11.937"N	104°41'32.459"W	1.09	BEGIN MWD+IFR SURVEYS
1247.00	2.660	141.330	1246.94	-2.79	-2.75	3.77	40°06'11.921"N	104°41'32.433"W	2.51	
1338.00	3.980	131.890	1337.79	-6.58	-6.51	7.44	40°06'11.884"N	104°41'32.386"W	1.57	
1429.00	4.900	122.210	1428.51	-10.80	-10.69	13.08	40°06'11.842"N	104°41'32.314"W	1.30	
1519.00	6.350	119.970	1518.08	-15.40	-15.23	20.64	40°06'11.798"N	104°41'32.216"W	1.63	
1610.00	8.030	122.830	1608.36	-21.45	-21.19	30.34	40°06'11.739"N	104°41'32.091"W	1.89	
1701.00	7.800	119.380	1698.49	-28.02	-27.66	41.07	40°06'11.675"N	104°41'31.954"W	0.58	
1790.00	8.960	119.250	1786.54	-34.46	-34.01	52.38	40°06'11.612"N	104°41'31.808"W	1.30	
1882.00	8.060	116.670	1877.53	-40.96	-40.41	64.39	40°06'11.549"N	104°41'31.653"W	1.06	
1973.00	9.050	116.690	1967.51	-47.15	-46.49	76.49	40°06'11.489"N	104°41'31.498"W	1.09	
2064.00	9.380	116.770	2057.34	-53.81	-53.04	89.50	40°06'11.424"N	104°41'31.330"W	0.36	
2154.00	9.200	122.580	2146.16	-61.10	-60.22	102.11	40°06'11.353"N	104°41'31.168"W	1.06	
2245.00	10.680	124.410	2235.79	-69.90	-68.90	115.20	40°06'11.267"N	104°41'30.999"W	1.66	
2336.00	9.550	121.410	2325.38	-78.71	-77.60	128.60	40°06'11.181"N	104°41'30.827"W	1.37	
2426.00	10.620	121.440	2413.99	-87.04	-85.82	142.05	40°06'11.100"N	104°41'30.654"W	1.19	
2516.00	9.850	118.450	2502.55	-95.16	-93.81	155.89	40°06'11.021"N	104°41'30.476"W	1.04	
2607.00	8.740	125.420	2592.36	-102.98	-101.53	168.37	40°06'10.945"N	104°41'30.315"W	1.74	
2698.00	9.430	122.020	2682.22	-111.04	-109.49	180.33	40°06'10.866"N	104°41'30.161"W	0.96	
2782.00	10.640	116.420	2764.93	-118.25	-116.59	193.11	40°06'10.796"N	104°41'29.997"W	1.85	
2868.00	9.170	112.010	2849.65	-124.47	-122.69	206.57	40°06'10.736"N	104°41'29.824"W	1.92	
2953.00	9.260	117.490	2933.56	-130.27	-128.38	218.92	40°06'10.679"N	104°41'29.665"W	1.04	
3123.00	10.690	122.950	3100.99	-145.38	-143.27	244.28	40°06'10.532"N	104°41'29.338"W	1.01	
3293.00	10.320	125.610	3268.14	-163.05	-160.72	269.89	40°06'10.360"N	104°41'29.009"W	0.36	
3463.00	10.260	117.360	3435.41	-179.09	-176.54	295.72	40°06'10.203"N	104°41'28.676"W	0.87	
3633.00	9.000	116.990	3603.01	-192.31	-189.53	321.02	40°06'10.075"N	104°41'28.351"W	0.74	
3803.00	8.430	115.130	3771.05	-203.83	-200.86	344.15	40°06'09.963"N	104°41'28.053"W	0.37	
3973.00	11.440	109.460	3938.49	-214.98	-211.77	371.33	40°06'09.855"N	104°41'27.703"W	1.86	
4143.00	11.160	114.680	4105.19	-227.73	-224.26	402.18	40°06'09.732"N	104°41'27.306"W	0.62	
4313.00	13.710	114.300	4271.19	-243.18	-239.42	435.49	40°06'09.582"N	104°41'26.878"W	1.50	

REFERENCE WELLPATH IDENTIFICATION			
Operator	KERR-MCGEE OIL & GAS ONSHORE LP	Slot	SLOT#03 SUMMIT 3N-29HZ (395'FSL & 1341'FWL, SEC.29)
Area	COLORADO	Well	SUMMIT 3N-29HZ
Field	WELD COUNTY (KERR MCGEE)	Wellbore	SUMMIT 3N-29HZ AWP (62'-12152'MD)
Facility	SEC.29-T2N-R65W		

WELLPATH DATA (119 stations) † = interpolated/extrapolated station

MD [ft]	Inclination [°]	Azimuth [°]	TVD [ft]	Vert Sect [ft]	North [ft]	East [ft]	Latitude	Longitude	DLS [°/100ft]	Comments
4482.00	10.510	114.640	4436.41	-258.13	-254.09	467.76	40°06'09.437"N	104°41'26.462"W	1.89	
4653.00	11.560	120.310	4604.25	-273.53	-269.24	496.73	40°06'09.287"N	104°41'26.090"W	0.88	
4823.00	12.550	116.910	4770.50	-290.76	-286.20	527.91	40°06'09.120"N	104°41'25.688"W	0.72	
4993.00	10.430	111.930	4937.09	-305.13	-300.31	558.66	40°06'08.980"N	104°41'25.293"W	1.38	
5078.00	11.080	117.630	5020.60	-311.92	-306.97	573.03	40°06'08.914"N	104°41'25.108"W	1.47	
5163.00	10.150	115.960	5104.14	-319.10	-314.03	587.00	40°06'08.845"N	104°41'24.928"W	1.15	
5248.00	9.280	114.940	5187.92	-325.38	-320.20	599.95	40°06'08.784"N	104°41'24.761"W	1.04	
5334.00	9.000	123.820	5272.84	-332.15	-326.87	611.83	40°06'08.718"N	104°41'24.608"W	1.67	
5419.00	7.740	121.410	5356.93	-338.93	-333.55	622.24	40°06'08.652"N	104°41'24.475"W	1.54	
5504.00	6.750	117.470	5441.25	-344.30	-338.84	631.55	40°06'08.599"N	104°41'24.355"W	1.30	
5589.00	6.620	116.250	5525.67	-348.84	-343.31	640.38	40°06'08.555"N	104°41'24.241"W	0.23	
5674.00	5.980	114.680	5610.16	-352.93	-347.33	648.80	40°06'08.516"N	104°41'24.133"W	0.78	
5759.00	3.930	132.140	5694.84	-356.79	-351.13	654.98	40°06'08.478"N	104°41'24.053"W	2.97	
5845.00	3.380	136.500	5780.67	-360.64	-354.95	658.91	40°06'08.440"N	104°41'24.003"W	0.72	
5930.00	2.920	142.090	5865.54	-364.19	-358.47	661.97	40°06'08.405"N	104°41'23.963"W	0.65	
6015.00	1.260	198.630	5950.49	-366.79	-361.07	663.00	40°06'08.380"N	104°41'23.950"W	2.90	
6101.00	1.390	198.820	6036.46	-368.67	-362.95	662.36	40°06'08.361"N	104°41'23.958"W	0.15	
6188.00	1.700	163.060	6123.43	-370.91	-365.19	662.40	40°06'08.339"N	104°41'23.958"W	1.14	
6358.00	1.190	222.820	6293.39	-374.61	-368.89	661.93	40°06'08.302"N	104°41'23.964"W	0.89	
6528.00	1.180	293.010	6463.36	-375.20	-369.50	659.12	40°06'08.296"N	104°41'24.000"W	0.80	
6571.00	1.500	306.570	6506.35	-374.68	-369.00	658.26	40°06'08.301"N	104°41'24.011"W	1.04	
6613.00	5.740	330.940	6548.25	-372.50	-366.83	656.80	40°06'08.323"N	104°41'24.030"W	10.52	
6656.00	10.220	335.810	6590.83	-367.12	-361.47	654.19	40°06'08.376"N	104°41'24.063"W	10.53	
6698.00	13.300	343.220	6631.94	-359.07	-353.44	651.27	40°06'08.455"N	104°41'24.101"W	8.15	
6741.00	16.450	348.230	6673.50	-348.34	-342.74	648.60	40°06'08.561"N	104°41'24.135"W	7.91	
6783.00	19.040	349.420	6713.50	-335.77	-330.18	646.13	40°06'08.685"N	104°41'24.167"W	6.23	
6826.00	22.400	353.150	6753.71	-320.71	-315.15	643.86	40°06'08.834"N	104°41'24.196"W	8.39	
6868.00	26.280	354.220	6791.97	-303.49	-297.95	641.97	40°06'09.004"N	104°41'24.221"W	9.30	
6911.00	30.380	355.790	6829.81	-283.16	-277.62	640.21	40°06'09.204"N	104°41'24.243"W	9.69	
6953.00	33.880	358.600	6865.38	-260.84	-255.32	639.14	40°06'09.425"N	104°41'24.257"W	9.06	
6996.00	38.520	0.000	6900.07	-235.46	-229.94	638.85	40°06'09.676"N	104°41'24.261"W	10.96	
7038.00	43.650	357.470	6931.72	-207.87	-202.36	638.21	40°06'09.948"N	104°41'24.269"W	12.84	
7081.00	49.400	357.470	6961.29	-176.70	-171.19	636.83	40°06'10.256"N	104°41'24.287"W	13.37	
7123.00	54.430	358.220	6987.19	-143.67	-138.17	635.60	40°06'10.582"N	104°41'24.302"W	12.06	
7166.00	60.020	358.930	7010.46	-107.53	-102.04	634.71	40°06'10.940"N	104°41'24.314"W	13.07	
7208.00	65.210	358.100	7029.77	-70.26	-64.77	633.74	40°06'11.308"N	104°41'24.326"W	12.48	
7251.00	70.560	358.970	7045.95	-30.44	-24.97	632.72	40°06'11.701"N	104°41'24.339"W	12.58	
7293.00	74.480	358.870	7058.57	9.61	15.08	631.97	40°06'12.097"N	104°41'24.349"W	9.34	
7336.00	77.630	0.350	7068.93	51.33	56.80	631.69	40°06'12.509"N	104°41'24.353"W	8.05	
7378.00	79.930	0.800	7077.10	92.52	98.00	632.10	40°06'12.916"N	104°41'24.347"W	5.58	
7421.00	83.520	359.980	7083.29	135.06	140.54	632.39	40°06'13.337"N	104°41'24.344"W	8.56	
7457.00	86.200	0.550	7086.51	170.91	176.39	632.56	40°06'13.691"N	104°41'24.342"W	7.61	
7504.00†	88.517	0.632	7088.68	217.85	223.34	633.04	40°06'14.155"N	104°41'24.335"W	4.93	7" CASING POINT
7514.00	89.010	0.650	7088.89	227.84	233.33	633.15	40°06'14.254"N	104°41'24.334"W	4.93	
7557.00	89.000	0.880	7089.64	270.83	276.32	633.73	40°06'14.679"N	104°41'24.326"W	0.54	

REFERENCE WELLPATH IDENTIFICATION			
Operator	KERR-MCGEE OIL & GAS ONSHORE LP	Slot	SLOT#03 SUMMIT 3N-29HZ (395'FSL & 1341'FWL, SEC.29)
Area	COLORADO	Well	SUMMIT 3N-29HZ
Field	WELD COUNTY (KERR MCGEE)	Wellbore	SUMMIT 3N-29HZ AWP (62'-12152'MD)
Facility	SEC.29-T2N-R65W		

WELLPATH DATA (119 stations)										
MD [ft]	Inclination [°]	Azimuth [°]	TVD [ft]	Vert Sect [ft]	North [ft]	East [ft]	Latitude	Longitude	DLS [°/100ft]	Comments
7642.00	89.010	357.940	7091.12	355.81	361.30	632.85	40°06'15.518"N	104°41'24.338"W	3.46	
7812.00	89.930	358.850	7092.69	525.76	531.22	628.09	40°06'17.198"N	104°41'24.399"W	0.76	
7982.00	90.810	359.840	7091.59	695.75	701.20	626.15	40°06'18.877"N	104°41'24.424"W	0.78	
8152.00	90.180	359.650	7090.12	865.75	871.19	625.39	40°06'20.557"N	104°41'24.434"W	0.39	
8322.00	91.160	0.460	7088.14	1035.72	1041.18	625.55	40°06'22.237"N	104°41'24.431"W	0.75	
8492.00	91.170	359.880	7084.68	1205.68	1211.14	626.06	40°06'23.917"N	104°41'24.425"W	0.34	
8663.00	89.530	0.570	7083.63	1376.65	1382.13	626.73	40°06'25.606"N	104°41'24.416"W	1.04	
8833.00	90.120	0.250	7084.15	1546.63	1552.12	627.95	40°06'27.286"N	104°41'24.400"W	0.39	
9004.00	89.310	0.270	7085.00	1717.61	1723.12	628.72	40°06'28.976"N	104°41'24.390"W	0.47	
9174.00	89.400	1.560	7086.92	1887.54	1893.08	631.44	40°06'30.656"N	104°41'24.355"W	0.76	
9344.00	89.190	359.700	7089.01	2057.49	2063.05	633.30	40°06'32.335"N	104°41'24.331"W	1.10	
9515.00	89.270	0.040	7091.31	2228.47	2234.03	632.92	40°06'34.025"N	104°41'24.336"W	0.20	
9684.00	91.480	358.410	7090.20	2397.45	2403.00	630.63	40°06'35.695"N	104°41'24.366"W	1.62	
9855.00	91.870	358.150	7085.20	2568.34	2573.85	625.50	40°06'37.383"N	104°41'24.432"W	0.27	
10025.00	90.890	357.810	7081.11	2738.23	2743.69	619.51	40°06'39.061"N	104°41'24.509"W	0.61	
10195.00	89.900	2.690	7079.94	2908.15	2913.63	620.25	40°06'40.741"N	104°41'24.499"W	2.93	
10366.00	89.190	0.890	7081.29	3079.00	3084.54	625.59	40°06'42.430"N	104°41'24.430"W	1.13	
10537.00	87.520	0.140	7086.20	3249.90	3255.45	627.13	40°06'44.119"N	104°41'24.410"W	1.07	
10709.00	89.130	355.350	7091.23	3421.69	3427.19	620.36	40°06'45.816"N	104°41'24.497"W	2.94	
10880.00	91.880	355.710	7089.73	3592.26	3597.64	607.04	40°06'47.500"N	104°41'24.669"W	1.62	
11049.00	92.070	2.130	7083.90	3761.06	3766.43	603.86	40°06'49.168"N	104°41'24.710"W	3.80	
11220.00	92.520	1.630	7077.05	3931.77	3937.20	609.46	40°06'50.856"N	104°41'24.638"W	0.39	
11389.00	88.520	3.580	7075.51	4100.48	4105.97	617.14	40°06'52.524"N	104°41'24.539"W	2.63	
11560.00	88.580	1.940	7079.84	4271.14	4276.71	625.37	40°06'54.211"N	104°41'24.433"W	0.96	
11729.00	88.540	357.880	7084.09	4440.05	4445.62	625.11	40°06'55.880"N	104°41'24.436"W	2.40	
11899.00	87.890	359.190	7089.39	4609.93	4615.48	620.76	40°06'57.559"N	104°41'24.492"W	0.86	
12070.00	87.190	0.060	7096.73	4780.77	4786.32	619.65	40°06'59.247"N	104°41'24.506"W	0.65	
12101.00	87.180	359.260	7098.25	4811.74	4817.28	619.46	40°06'59.553"N	104°41'24.509"W	2.58	LAST BHI MWD+IFR SURVEYS
12152.00	87.180	359.260	7100.76	4862.67	4868.21	618.80	40°07'00.056"N	104°41'24.517"W	0.00	PROJECTION TO BIT

HOLE & CASING SECTIONS -									
Ref Wellbore: SUMMIT 3N-29HZ AWP (62'-12152'MD)					Ref Wellpath: SUMMIT 3N-29HZ AWP (62'-12152'MD)				
String/Diameter	Start MD [ft]	End MD [ft]	Interval [ft]	Start TVD [ft]	End TVD [ft]	Start N/S [ft]	Start E/W [ft]	End N/S [ft]	End E/W [ft]
13.5in Open Hole	16.00	1116.00	1100.00	16.00	1115.98	0.00	0.00	-1.25	1.43
9.625in Casing Surface	16.00	1106.00	1090.00	16.00	1105.98	0.00	0.00	-1.31	1.38
8.75in Open Hole	1116.00	7505.00	6389.00	1115.98	7088.70	-1.25	1.43	224.34	633.05
7in Casing Intermediate	16.00	7504.00	7488.00	16.00	7088.68	0.00	0.00	223.34	633.04
6.125in Open Hole	7505.00	12152.00	4647.00	7088.70	7100.76	224.34	633.05	4868.21	618.80

REFERENCE WELLPATH IDENTIFICATION			
Operator	KERR-MCGEE OIL & GAS ONSHORE LP	Slot	SLOT#03 SUMMIT 3N-29HZ (395'FSL & 1341'FWL, SEC.29)
Area	COLORADO	Well	SUMMIT 3N-29HZ
Field	WELD COUNTY (KERR MCGEE)	Wellbore	SUMMIT 3N-29HZ AWB (62'-12152'MD)
Facility	SEC.29-T2N-R65W		

TARGETS									
Name	MD [ft]	TVD [ft]	North [ft]	East [ft]	Grid East [US ft]	Grid North [US ft]	Latitude	Longitude	Shape
SUMMIT 3N-29HZ BHL REV-1 (1'FNL & 2000'FWL, SEC.29)		7092.00	4893.59	618.42	3226492.22	1286411.05	40°07'00.307"N	104°41'24.522"W	point
SUMMIT 3N-29HZ LANDBOX		7092.00	0.81	59.60	3225978.01	1281513.59	40°06'11.956"N	104°41'31.715"W	polygon
SEC.29-T2N-R65W SECTION LINES		7118.00	0.81	-0.23	3225918.18	1281513.05	40°06'11.956"N	104°41'32.485"W	polygon
SEC.32-T2N-R65W SECTION LINES		7118.00	0.81	-0.23	3225918.18	1281513.05	40°06'11.956"N	104°41'32.485"W	polygon
SEC.29-T2N-R65W HARDLINES (460'SETBACKS)		7343.00	0.41	-460.14	3225458.31	1281508.46	40°06'11.952"N	104°41'38.404"W	polygon
SEC.32-T2N-R65W HARDLINES (460'SETBACKS)		7343.00	0.81	-0.23	3225918.18	1281513.05	40°06'11.956"N	104°41'32.485"W	polygon

WELLPATH COMPOSITION -				
Start MD [ft]		End MD [ft]		Wellbore
Ref Wellbore: SUMMIT 3N-29HZ AWB (62'-12152'MD) Ref Wellpath: SUMMIT 3N-29HZ AWP (62'-12152'MD)				
Start MD [ft]	End MD [ft]	Positional Uncertainty Model	Log Name/Comment	Wellbore
16.00	1071.00	ISCWSA MWD, Rev. 2 (Standard)	CATHEDRAL ENERGY MWD SURVEYS 13.5" <62-1071>	SUMMIT 3N-29HZ AWB (62'-12152'MD)
1071.00	7457.00	NaviTrak (MAGCORR,IFR)	BHI MWD+IFR SURVEYS 8.75" <1153-7457>	SUMMIT 3N-29HZ AWB (62'-12152'MD)
7457.00	12101.00	NaviTrak (MAGCORR,IFR)	BHI MWD+IFR SURVEYS 6.125" <7514-12101>	SUMMIT 3N-29HZ AWB (62'-12152'MD)
12101.00	12152.00	Blind Drilling (std)	Projection to bit	SUMMIT 3N-29HZ AWB (62'-12152'MD)

REFERENCE WELLPATH IDENTIFICATION			
Operator	KERR-MCGEE OIL & GAS ONSHORE LP	Slot	SLOT#03 SUMMIT 3N-29HZ (395'FSL & 1341'FWL, SEC.29)
Area	COLORADO	Well	SUMMIT 3N-29HZ
Field	WELD COUNTY (KERR MCGEE)	Wellbore	SUMMIT 3N-29HZ AWB (62'-12152'MD)
Facility	SEC.29-T2N-R65W		

WELLPATH COMMENTS				
MD [ft]	Inclination [°]	Azimuth [°]	TVD [ft]	Comment
62.00	0.100	86.600	62.00	BEGIN MWD SURVEYS
1071.00	0.500	353.100	1070.99	TIE-INTO MWD SURVEYS
1153.00	0.750	82.470	1152.98	BEGIN MWD+IFR SURVEYS
7504.00	88.517	0.632	7088.68	7" CASING POINT
12101.00	87.180	359.260	7098.25	LAST BHI MWD+IFR SURVEYS
12152.00	87.180	359.260	7100.76	PROJECTION TO BIT