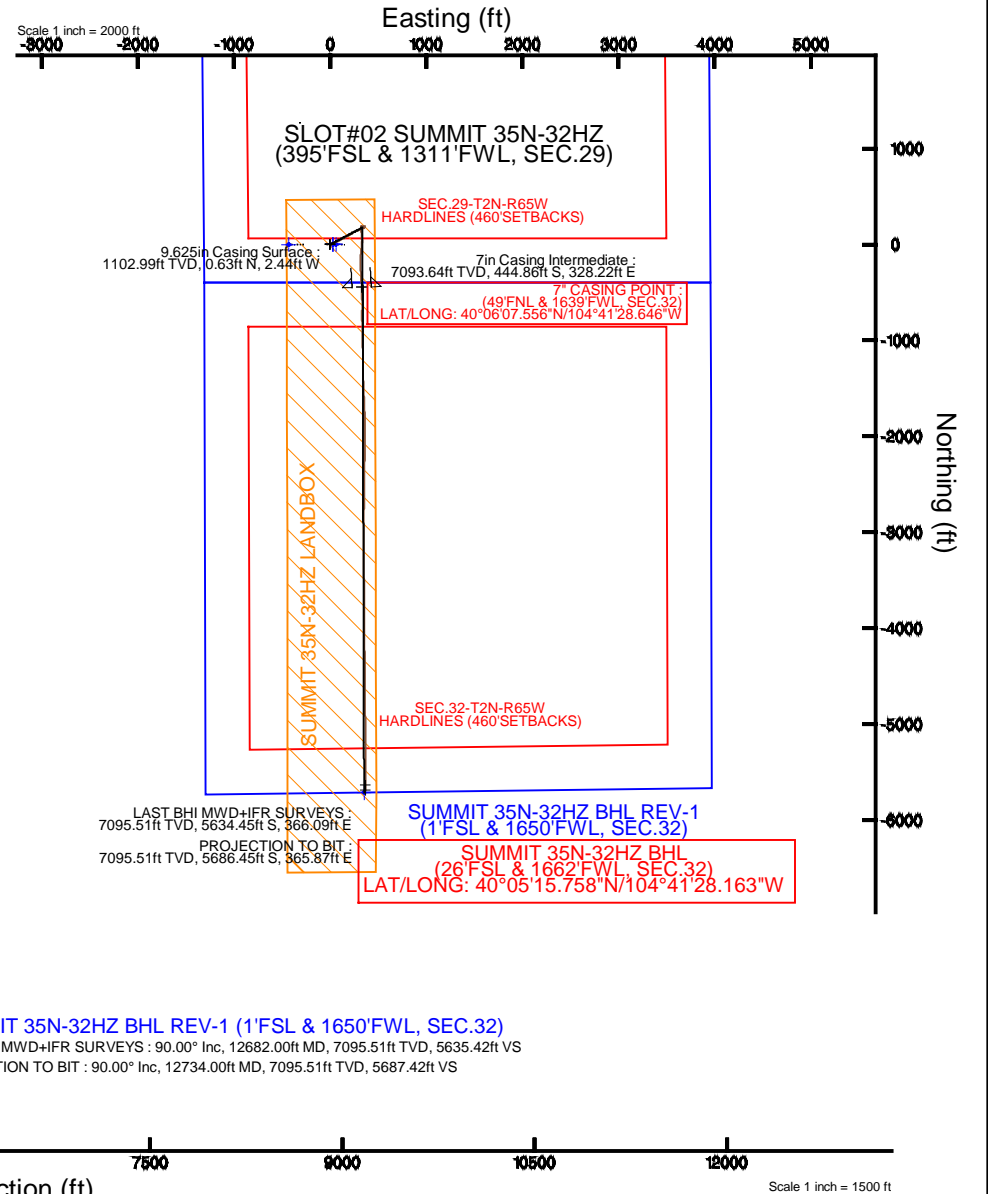
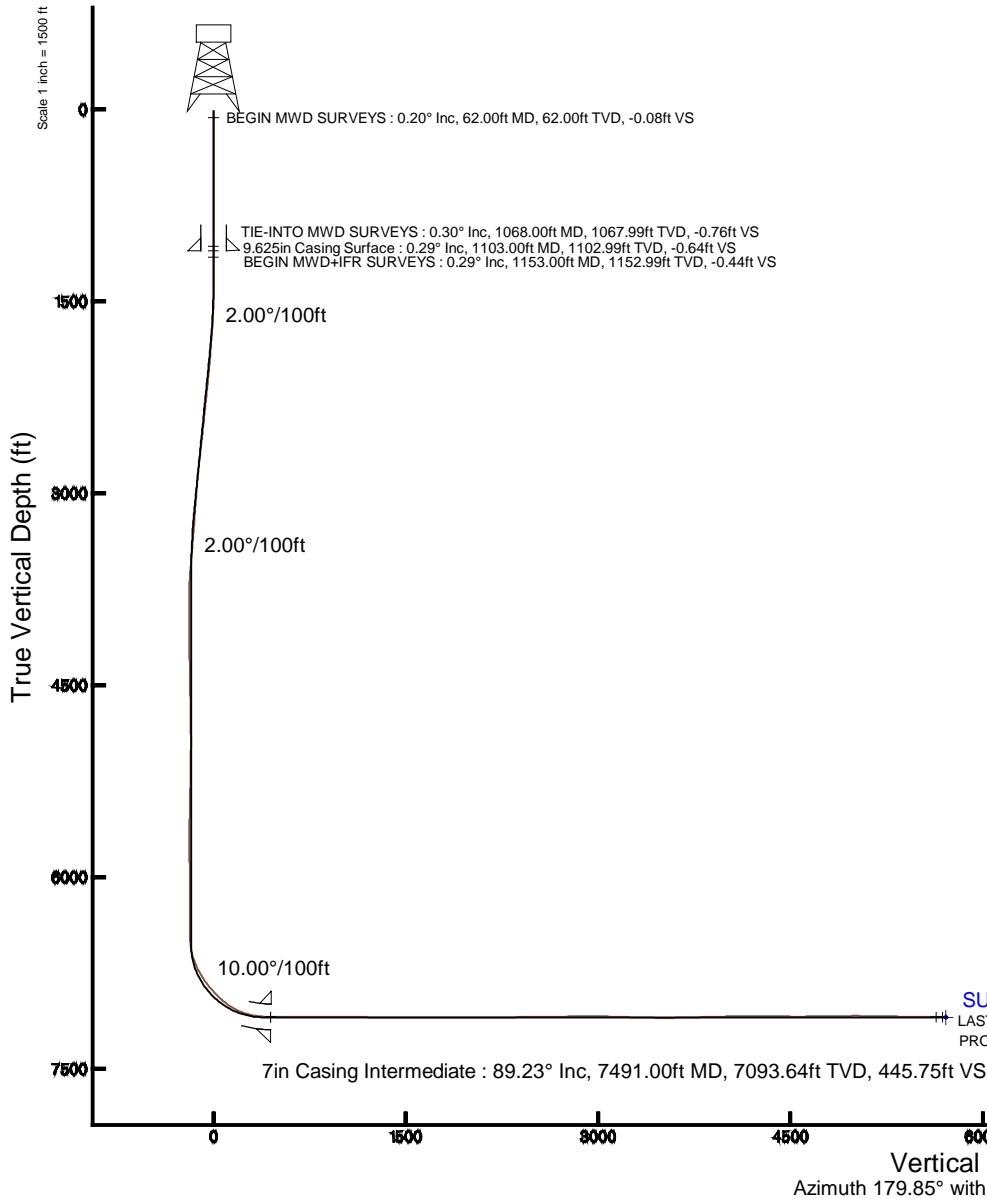


KERR-MCGEE OIL & GAS ONSHORE LP

Location: COLORADO Slot: SLOT#02 SUMMIT 35N-32HZ (395'FSL & 1311'FWL, SEC.29)
 Field: WELD COUNTY (KERR MCGEE) Well: SUMMIT 35N-32HZ
 Facility: SEC.29-T2N-R65W Wellbore: SUMMIT 35N-32HZ PWB

Plot reference wellpath is SUMMIT 35N-32HZ (REV-A.0) PWP

True vertical depths are referenced to XTREME 6 (16'KB) (RKB)	Grid System: NAD83 / Lambert Colorado SP, Northern Zone (501), US feet
Measured depths are referenced to XTREME 6 (16'KB) (RKB)	North Reference: True north
XTREME 6 (16'KB) (RKB) to Mean Sea Level: 4957 feet	Scale: True distance
Mean Sea Level to Mud line (At Slot: SLOT#02 SUMMIT 35N-32HZ (395'FSL & 1311'FWL, SEC.29)): 0 feet	Depths are in feet
Coordinates are in feet referenced to Slot	Created by: amarcar on 1/7/2015



REFERENCE WELLPATH IDENTIFICATION			
Operator	KERR-MCGEE OIL & GAS ONSHORE LP	Slot	SLOT#02 SUMMIT 35N-32HZ (395'FSL & 1311'FWL, SEC.29)
Area	COLORADO	Well	SUMMIT 35N-32HZ
Field	WELD COUNTY (KERR MCGEE)	Wellbore	SUMMIT 35N-32HZ AWP (62'-12734'MD)
Facility	SEC.29-T2N-R65W		

REPORT SETUP INFORMATION			
Projection System	NAD83 / Lambert Colorado SP, Northern Zone (501), US feet	Software System	WellArchitect® 4.0.0
North Reference	True	User	Amarcar
Scale	0.99996	Report Generated	1/7/2015 at 9:18:47 AM
Convergence at slot	n/a	Database/Source file	WellArchitectDB/SUMMIT_35N-32HZ_AWP__62_-12734_MD_.xml

WELLPATH LOCATION						
	Local coordinates		Grid coordinates		Geographic coordinates	
	North[ft]	East[ft]	Easting[US ft]	Northing[US ft]	Latitude	Longitude
Slot Location	-0.20	-29.92	3225888.27	1281512.37	40°06'11.952"N	104°41'32.870"W
Facility Reference Pt			3225918.18	1281512.85	40°06'11.954"N	104°41'32.485"W
Field Reference Pt			3197771.84	1268891.29	40°04'09.600"N	104°47'36.000"W

WELLPATH DATUM			
Calculation method	Minimum curvature	XTREME 6 (16'KB) (RKB) to Facility Vertical Datum	4957.00ft
Horizontal Reference Pt	Slot	XTREME 6 (16'KB) (RKB) to Mean Sea Level	4957.00ft
Vertical Reference Pt	XTREME 6 (16'KB) (RKB)	XTREME 6 (16'KB) (RKB) to Mud Line at Slot (SLOT#02 SUMMIT 35N-32HZ (395'FSL & 1311'FWL, SEC.29))	4957.00ft
MD Reference Pt	XTREME 6 (16'KB) (RKB)	Section Origin	N 0.00, E 0.00 ft
Field Vertical Reference	Mean Sea Level	Section Azimuth	179.85°

REFERENCE WELLPATH IDENTIFICATION

Operator	KERR-MCGEE OIL & GAS ONSHORE LP	Slot	SLOT#02 SUMMIT 35N-32HZ (395'FSL & 1311'FWL, SEC.29)
Area	COLORADO	Well	SUMMIT 35N-32HZ
Field	WELD COUNTY (KERR MCGEE)	Wellbore	SUMMIT 35N-32HZ AWP (62'-12734'MD)
Facility	SEC.29-T2N-R65W		

WELLPATH DATA (109 stations) † = interpolated/extrapolated station

MD [ft]	Inclination [°]	Azimuth [°]	TVD [ft]	Vert Sect [ft]	North [ft]	East [ft]	Latitude	Longitude	DLS [°/100ft]	Comments
0.00†	0.000	5.700	0.00	0.00	0.00	0.00	40°06'11.952"N	104°41'32.870"W	0.00	
16.00	0.000	5.700	16.00	0.00	0.00	0.00	40°06'11.952"N	104°41'32.870"W	0.00	
62.00	0.200	5.700	62.00	-0.08	0.08	0.01	40°06'11.953"N	104°41'32.870"W	0.43	BEGIN MWD SURVEYS
152.00	0.400	318.100	152.00	-0.47	0.47	-0.19	40°06'11.957"N	104°41'32.872"W	0.34	
240.00	0.300	289.500	240.00	-0.78	0.78	-0.61	40°06'11.960"N	104°41'32.878"W	0.23	
320.00	0.200	328.200	320.00	-0.97	0.96	-0.88	40°06'11.962"N	104°41'32.881"W	0.24	
400.00	0.200	269.400	400.00	-1.08	1.08	-1.09	40°06'11.963"N	104°41'32.884"W	0.25	
480.00	0.200	267.600	480.00	-1.08	1.07	-1.37	40°06'11.963"N	104°41'32.888"W	0.01	
560.00	0.200	224.700	560.00	-0.97	0.97	-1.61	40°06'11.962"N	104°41'32.891"W	0.18	
640.00	0.400	284.100	639.99	-0.94	0.94	-1.98	40°06'11.961"N	104°41'32.895"W	0.43	
720.00	0.400	289.500	719.99	-1.11	1.10	-2.51	40°06'11.963"N	104°41'32.902"W	0.05	
800.00	0.200	287.300	799.99	-1.24	1.23	-2.91	40°06'11.964"N	104°41'32.907"W	0.25	
880.00	0.100	278.400	879.99	-1.29	1.29	-3.11	40°06'11.965"N	104°41'32.910"W	0.13	
960.00	0.400	128.900	959.99	-1.13	1.12	-2.96	40°06'11.963"N	104°41'32.908"W	0.61	
1040.00	0.200	140.800	1039.99	-0.84	0.84	-2.66	40°06'11.960"N	104°41'32.904"W	0.26	
1068.00	0.300	129.000	1067.99	-0.76	0.75	-2.57	40°06'11.959"N	104°41'32.903"W	0.40	TIE-INTO MWD SURVEYS
1153.00	0.290	144.400	1152.99	-0.44	0.44	-2.27	40°06'11.956"N	104°41'32.899"W	0.09	BEGIN MWD+IFR SURVEYS
1247.00	0.580	116.180	1246.98	-0.04	0.03	-1.71	40°06'11.952"N	104°41'32.892"W	0.37	
1338.00	1.770	119.820	1337.96	0.87	-0.87	-0.07	40°06'11.943"N	104°41'32.871"W	1.31	
1429.00	3.140	79.110	1428.88	1.11	-1.10	3.59	40°06'11.941"N	104°41'32.824"W	2.35	
1519.00	4.310	67.560	1518.69	-0.64	0.66	9.14	40°06'11.959"N	104°41'32.752"W	1.54	
1610.00	6.000	57.680	1609.32	-4.47	4.51	16.32	40°06'11.997"N	104°41'32.660"W	2.09	
1701.00	7.570	60.240	1699.68	-9.96	10.03	25.54	40°06'12.051"N	104°41'32.541"W	1.76	
1790.00	9.190	62.370	1787.73	-16.13	16.23	36.93	40°06'12.112"N	104°41'32.395"W	1.85	
1882.00	10.680	66.110	1878.35	-22.96	23.09	51.23	40°06'12.180"N	104°41'32.211"W	1.76	
1973.00	12.460	69.460	1967.50	-29.77	29.95	68.14	40°06'12.248"N	104°41'31.993"W	2.09	
2064.00	13.830	66.130	2056.11	-37.56	37.80	87.28	40°06'12.326"N	104°41'31.747"W	1.72	
2245.00	12.550	62.240	2232.34	-55.38	55.71	124.47	40°06'12.503"N	104°41'31.268"W	0.86	
2426.00	11.310	59.120	2409.43	-73.56	73.98	157.10	40°06'12.683"N	104°41'30.848"W	0.77	
2607.00	12.080	58.220	2586.67	-92.56	93.07	188.43	40°06'12.872"N	104°41'30.445"W	0.44	
2784.00	11.960	57.210	2759.79	-112.16	112.75	219.60	40°06'13.066"N	104°41'30.044"W	0.14	
2955.00	11.080	63.850	2927.35	-128.92	129.59	249.24	40°06'13.233"N	104°41'29.662"W	0.93	
3125.00	12.660	71.550	3093.72	-141.93	142.69	281.58	40°06'13.362"N	104°41'29.246"W	1.31	
3211.00	11.980	72.270	3177.74	-147.58	148.39	299.02	40°06'13.418"N	104°41'29.022"W	0.81	
3295.00	10.830	65.160	3260.08	-153.51	154.36	314.49	40°06'13.477"N	104°41'28.823"W	2.16	
3380.00	9.330	61.580	3343.77	-160.11	161.00	327.80	40°06'13.543"N	104°41'28.652"W	1.91	
3466.00	8.660	61.920	3428.71	-166.44	167.36	339.64	40°06'13.606"N	104°41'28.499"W	0.78	
3551.00	8.340	56.400	3512.78	-172.84	173.78	350.42	40°06'13.669"N	104°41'28.360"W	1.03	
3636.00	6.660	32.530	3597.07	-180.38	181.35	358.21	40°06'13.744"N	104°41'28.260"W	4.12	
3806.00	2.690	303.080	3766.62	-190.88	191.86	360.17	40°06'13.848"N	104°41'28.235"W	4.21	
3889.00	0.960	237.590	3849.58	-191.58	192.55	357.95	40°06'13.855"N	104°41'28.263"W	2.95	
4230.00	1.390	246.220	4190.51	-188.40	189.35	351.75	40°06'13.823"N	104°41'28.343"W	0.14	
4571.00	1.980	232.690	4531.36	-183.18	184.11	343.28	40°06'13.771"N	104°41'28.452"W	0.21	
4826.00	2.330	244.240	4786.18	-178.28	179.19	335.11	40°06'13.723"N	104°41'28.557"W	0.22	
5166.00	1.090	358.010	5126.09	-178.52	179.42	328.77	40°06'13.725"N	104°41'28.639"W	0.87	

REFERENCE WELLPATH IDENTIFICATION			
Operator	KERR-MCGEE OIL & GAS ONSHORE LP	Slot	SLOT#02 SUMMIT 35N-32HZ (395'FSL & 1311'FWL, SEC.29)
Area	COLORADO	Well	SUMMIT 35N-32HZ
Field	WELD COUNTY (KERR MCGEE)	Wellbore	SUMMIT 35N-32HZ AWP (62'-12734'MD)
Facility	SEC.29-T2N-R65W		

WELLPATH DATA (109 stations) † = interpolated/extrapolated station										
MD [ft]	Inclination [°]	Azimuth [°]	TVD [ft]	Vert Sect [ft]	North [ft]	East [ft]	Latitude	Longitude	DLS [°/100ft]	Comments
5506.00	1.480	332.200	5466.00	-185.65	186.53	326.61	40°06'13.795"N	104°41'28.667"W	0.20	
5847.00	0.700	149.720	5806.98	-187.75	188.63	325.61	40°06'13.816"N	104°41'28.680"W	0.64	
6188.00	0.960	280.390	6147.96	-186.47	187.34	323.85	40°06'13.803"N	104°41'28.702"W	0.44	
6485.00	0.740	147.080	6444.94	-185.31	186.18	322.45	40°06'13.792"N	104°41'28.720"W	0.53	
6528.00	3.050	180.080	6487.92	-183.93	184.81	322.59	40°06'13.778"N	104°41'28.718"W	5.73	
6570.00	7.580	182.160	6529.73	-180.04	180.92	322.49	40°06'13.740"N	104°41'28.720"W	10.79	
6613.00	10.740	182.030	6572.17	-173.21	174.08	322.24	40°06'13.672"N	104°41'28.723"W	7.35	
6655.00	15.520	179.740	6613.06	-163.67	164.54	322.13	40°06'13.578"N	104°41'28.725"W	11.45	
6698.00	19.510	176.080	6654.06	-150.75	151.62	322.64	40°06'13.450"N	104°41'28.718"W	9.62	
6740.00	24.530	173.170	6692.99	-135.08	135.96	324.16	40°06'13.296"N	104°41'28.698"W	12.23	
6783.00	27.640	172.210	6731.60	-116.32	117.21	326.58	40°06'13.110"N	104°41'28.667"W	7.30	
6825.00	30.790	173.980	6768.26	-95.97	96.86	329.02	40°06'12.909"N	104°41'28.636"W	7.78	
6867.00	34.230	175.640	6803.67	-73.49	74.38	331.05	40°06'12.687"N	104°41'28.610"W	8.46	
6910.00	36.800	178.460	6838.67	-48.54	49.44	332.32	40°06'12.441"N	104°41'28.593"W	7.09	
6953.00	40.170	180.950	6872.33	-21.79	22.69	332.43	40°06'12.176"N	104°41'28.592"W	8.62	
6995.00	43.760	186.030	6903.56	6.21	-5.31	330.68	40°06'11.899"N	104°41'28.614"W	11.76	
7037.00	46.510	187.300	6933.19	35.76	-34.88	327.22	40°06'11.607"N	104°41'28.659"W	6.89	
7079.00	48.960	186.730	6961.43	66.60	-65.72	323.43	40°06'11.303"N	104°41'28.708"W	5.92	
7121.00	51.880	186.260	6988.19	98.75	-97.88	319.77	40°06'10.985"N	104°41'28.755"W	7.01	
7163.00	57.260	182.240	7012.53	132.85	-131.99	317.27	40°06'10.648"N	104°41'28.787"W	14.99	
7206.00	62.510	180.610	7034.10	170.01	-169.16	316.36	40°06'10.280"N	104°41'28.799"W	12.64	
7248.00	67.740	180.080	7051.76	208.10	-207.25	316.14	40°06'09.904"N	104°41'28.802"W	12.50	
7291.00	73.160	177.290	7066.15	248.60	-247.74	317.08	40°06'09.504"N	104°41'28.789"W	14.01	
7333.00	77.500	176.920	7076.78	289.17	-288.31	319.14	40°06'09.103"N	104°41'28.763"W	10.37	
7376.00	81.390	175.910	7084.66	331.36	-330.49	321.78	40°06'08.686"N	104°41'28.729"W	9.34	
7418.00	84.610	176.260	7089.78	372.95	-372.07	324.63	40°06'08.275"N	104°41'28.692"W	7.71	
7459.00	87.290	177.450	7092.67	413.79	-412.90	326.87	40°06'07.872"N	104°41'28.664"W	7.15	
7491.00†	89.233	177.717	7093.64	445.75	-444.86	328.22	40°06'07.556"N	104°41'28.646"W	6.13	7" CASING POINT
7501.00	89.840	177.800	7093.72	455.74	-454.85	328.61	40°06'07.457"N	104°41'28.641"W	6.13	
7548.00	90.460	177.830	7093.60	502.71	-501.82	330.40	40°06'06.993"N	104°41'28.618"W	1.32	
7639.00	89.590	179.480	7093.56	593.69	-592.79	332.54	40°06'06.094"N	104°41'28.591"W	2.05	
7730.00	89.590	180.650	7094.21	684.68	-683.78	332.43	40°06'05.195"N	104°41'28.592"W	1.29	
7900.00	90.180	178.790	7094.55	854.67	-853.77	333.26	40°06'03.515"N	104°41'28.581"W	1.15	
8070.00	89.930	178.420	7094.39	1024.63	-1023.72	337.40	40°06'01.835"N	104°41'28.528"W	0.26	
8240.00	89.350	178.750	7095.46	1194.59	-1193.67	341.60	40°06'00.156"N	104°41'28.474"W	0.39	
8286.00	89.630	179.460	7095.87	1240.58	-1239.66	342.32	40°05'59.701"N	104°41'28.465"W	1.66	
8325.00	89.410	179.810	7096.20	1279.58	-1278.66	342.57	40°05'59.316"N	104°41'28.462"W	1.06	
8496.00	89.380	177.520	7098.00	1450.52	-1449.59	346.55	40°05'57.627"N	104°41'28.410"W	1.34	
8666.00	90.240	177.580	7098.56	1620.38	-1619.43	353.82	40°05'55.949"N	104°41'28.317"W	0.51	
8837.00	89.780	177.510	7098.53	1791.24	-1790.27	361.14	40°05'54.260"N	104°41'28.223"W	0.27	
9007.00	90.030	180.730	7098.82	1961.21	-1960.23	363.75	40°05'52.581"N	104°41'28.189"W	1.90	
9178.00	90.240	181.010	7098.41	2132.18	-2131.21	361.16	40°05'50.891"N	104°41'28.223"W	0.20	
9349.00	90.920	180.920	7096.68	2303.14	-2302.18	358.28	40°05'49.202"N	104°41'28.260"W	0.40	
9517.00	91.440	181.140	7093.22	2471.07	-2470.11	355.26	40°05'47.542"N	104°41'28.299"W	0.34	
9685.00	89.870	180.210	7091.30	2639.03	-2638.08	353.28	40°05'45.882"N	104°41'28.324"W	1.09	

REFERENCE WELLPATH IDENTIFICATION			
Operator	KERR-MCGEE OIL & GAS ONSHORE LP	Slot	SLOT#02 SUMMIT 35N-32HZ (395'FSL & 1311'FWL, SEC.29)
Area	COLORADO	Well	SUMMIT 35N-32HZ
Field	WELD COUNTY (KERR MCGEE)	Wellbore	SUMMIT 35N-32HZ AWP (62'-12734'MD)
Facility	SEC.29-T2N-R65W		

WELLPATH DATA (109 stations)										
MD [ft]	Inclination [°]	Azimuth [°]	TVD [ft]	Vert Sect [ft]	North [ft]	East [ft]	Latitude	Longitude	DLS [°/100ft]	Comments
9856.00	91.070	180.870	7089.90	2810.01	-2809.07	351.67	40°05'44.192"N	104°41'28.345"W	0.80	
10026.00	89.500	180.090	7089.05	2979.99	-2979.05	350.24	40°05'42.513"N	104°41'28.363"W	1.03	
10196.00	88.020	179.650	7092.73	3149.94	-3149.01	350.63	40°05'40.833"N	104°41'28.358"W	0.91	
10367.00	88.360	179.690	7098.13	3320.86	-3319.92	351.61	40°05'39.144"N	104°41'28.346"W	0.20	
10536.00	89.590	179.780	7101.16	3489.83	-3488.89	352.39	40°05'37.474"N	104°41'28.336"W	0.73	
10705.00	91.810	179.660	7099.09	3658.80	-3657.86	353.22	40°05'35.804"N	104°41'28.325"W	1.32	
10875.00	91.070	179.820	7094.82	3828.75	-3827.80	353.99	40°05'34.125"N	104°41'28.315"W	0.45	
11045.00	91.910	179.450	7090.40	3998.69	-3997.74	355.07	40°05'32.446"N	104°41'28.301"W	0.54	
11214.00	90.490	178.760	7086.86	4167.63	-4166.68	357.71	40°05'30.776"N	104°41'28.267"W	0.93	
11384.00	88.700	179.090	7088.06	4337.60	-4336.64	360.90	40°05'29.097"N	104°41'28.226"W	1.07	
11554.00	89.530	179.550	7090.69	4507.57	-4506.60	362.92	40°05'27.417"N	104°41'28.200"W	0.56	
11724.00	91.200	179.420	7089.61	4677.55	-4676.59	364.45	40°05'25.737"N	104°41'28.181"W	0.99	
11894.00	90.770	179.880	7086.68	4847.53	-4846.56	365.49	40°05'24.058"N	104°41'28.167"W	0.37	
12064.00	90.000	179.620	7085.54	5017.52	-5016.55	366.23	40°05'22.378"N	104°41'28.158"W	0.48	
12232.00	88.980	180.020	7087.04	5185.51	-5184.54	366.76	40°05'20.718"N	104°41'28.151"W	0.65	
12402.00	88.420	180.260	7090.89	5355.47	-5354.49	366.34	40°05'19.038"N	104°41'28.157"W	0.36	
12572.00	89.070	179.850	7094.62	5525.42	-5524.45	366.18	40°05'17.358"N	104°41'28.159"W	0.45	
12682.00	90.000	180.240	7095.51	5635.42	-5634.45	366.09	40°05'16.271"N	104°41'28.160"W	0.92	LAST BHI MWD+IFR SURVEYS
12734.00	90.000	180.240	7095.51	5687.42	-5686.45	365.87	40°05'15.758"N	104°41'28.163"W	0.00	PROJECTION TO BIT

HOLE & CASING SECTIONS -									
Ref Wellbore: SUMMIT 35N-32HZ AWP (62'-12734'MD)					Ref Wellpath: SUMMIT 35N-32HZ AWP (62'-12734'MD)				
String/Diameter	Start MD [ft]	End MD [ft]	Interval [ft]	Start TVD [ft]	End TVD [ft]	Start N/S [ft]	Start E/W [ft]	End N/S [ft]	End E/W [ft]
13.5in Open Hole	16.00	1113.00	1097.00	16.00	1112.99	0.00	0.00	0.59	-2.40
9.625in Casing Surface	16.00	1103.00	1087.00	16.00	1102.99	0.00	0.00	0.63	-2.44
8.75in Open Hole	1113.00	7501.00	6388.00	1112.99	7093.72	0.59	-2.40	-454.85	328.61
7in Casing Intermediate	16.00	7491.00	7475.00	16.00	7093.64	0.00	0.00	-444.86	328.22
6.125in Open Hole	7501.00	12734.00	5233.00	7093.72	7095.51	-454.85	328.61	-5686.45	365.87

REFERENCE WELLPATH IDENTIFICATION			
Operator	KERR-MCGEE OIL & GAS ONSHORE LP	Slot	SLOT#02 SUMMIT 35N-32HZ (395'FSL & 1311'FWL, SEC.29)
Area	COLORADO	Well	SUMMIT 35N-32HZ
Field	WELD COUNTY (KERR MCGEE)	Wellbore	SUMMIT 35N-32HZ AWB (62'-12734'MD)
Facility	SEC.29-T2N-R65W		

TARGETS									
Name	MD [ft]	TVD [ft]	North [ft]	East [ft]	Grid East [US ft]	Grid North [US ft]	Latitude	Longitude	Shape
SUMMIT 35N-32HZ BHL REV-1 (1'FSL & 1650'FWL, SEC.32)		7097.00	-5711.71	353.33	3226293.58	1275804.36	40°05'15.508"N	104°41'28.324"W	point
SUMMIT 35N-32HZ LANDBOX		7097.00	0.40	59.83	3225948.09	1281513.32	40°06'11.956"N	104°41'32.100"W	polygon
SEC.29-T2N-R65W SECTION LINES		7118.00	0.40	29.92	3225918.18	1281513.05	40°06'11.956"N	104°41'32.485"W	polygon
SEC.32-T2N-R65W SECTION LINES		7118.00	0.40	29.92	3225918.18	1281513.05	40°06'11.956"N	104°41'32.485"W	polygon
SEC.29-T2N-R65W HARDLINES (460'SETBACKS)		7343.00	0.00	-429.99	3225458.31	1281508.46	40°06'11.952"N	104°41'38.404"W	polygon
SEC.32-T2N-R65W HARDLINES (460'SETBACKS)		7343.00	0.40	29.92	3225918.18	1281513.05	40°06'11.956"N	104°41'32.485"W	polygon

WELLPATH COMPOSITION -				
Ref Wellbore: SUMMIT 35N-32HZ AWB (62'-12734'MD) Ref Wellpath: SUMMIT 35N-32HZ AWP (62'-12734'MD)				
Start MD [ft]	End MD [ft]	Positional Uncertainty Model	Log Name/Comment	Wellbore
16.00	1068.00	ISCWSA MWD, Rev. 2 (Standard)	CATHEDRAL ENERGY MWD SURVEYS 13.5" <62-1068>	SUMMIT 35N-32HZ AWB (62'-12734'MD)
1068.00	7501.00	NaviTrak (MAGCORR,IFR)	BHI MWD+IFR SURVEYS 8.75" <1153-7501>	SUMMIT 35N-32HZ AWB (62'-12734'MD)
7501.00	12682.00	NaviTrak (MAGCORR,IFR)	BHI MWD+IFR SURVEYS 6.125" <7548-12682>	SUMMIT 35N-32HZ AWB (62'-12734'MD)
12682.00	12734.00	Blind Drilling (std)	Projection to bit	SUMMIT 35N-32HZ AWB (62'-12734'MD)

REFERENCE WELLPATH IDENTIFICATION			
Operator	KERR-MCGEE OIL & GAS ONSHORE LP	Slot	SLOT#02 SUMMIT 35N-32HZ (395'FSL & 1311'FWL, SEC.29)
Area	COLORADO	Well	SUMMIT 35N-32HZ
Field	WELD COUNTY (KERR MCGEE)	Wellbore	SUMMIT 35N-32HZ AWP (62'-12734'MD)
Facility	SEC.29-T2N-R65W		

WELLPATH COMMENTS				
MD [ft]	Inclination [°]	Azimuth [°]	TVD [ft]	Comment
62.00	0.200	5.700	62.00	BEGIN MWD SURVEYS
1068.00	0.300	129.000	1067.99	TIE-INTO MWD SURVEYS
1153.00	0.290	144.400	1152.99	BEGIN MWD+IFR SURVEYS
7491.00	89.233	177.717	7093.64	7" CASING POINT
12682.00	90.000	180.240	7095.51	LAST BHI MWD+IFR SURVEYS
12734.00	90.000	180.240	7095.51	PROJECTION TO BIT