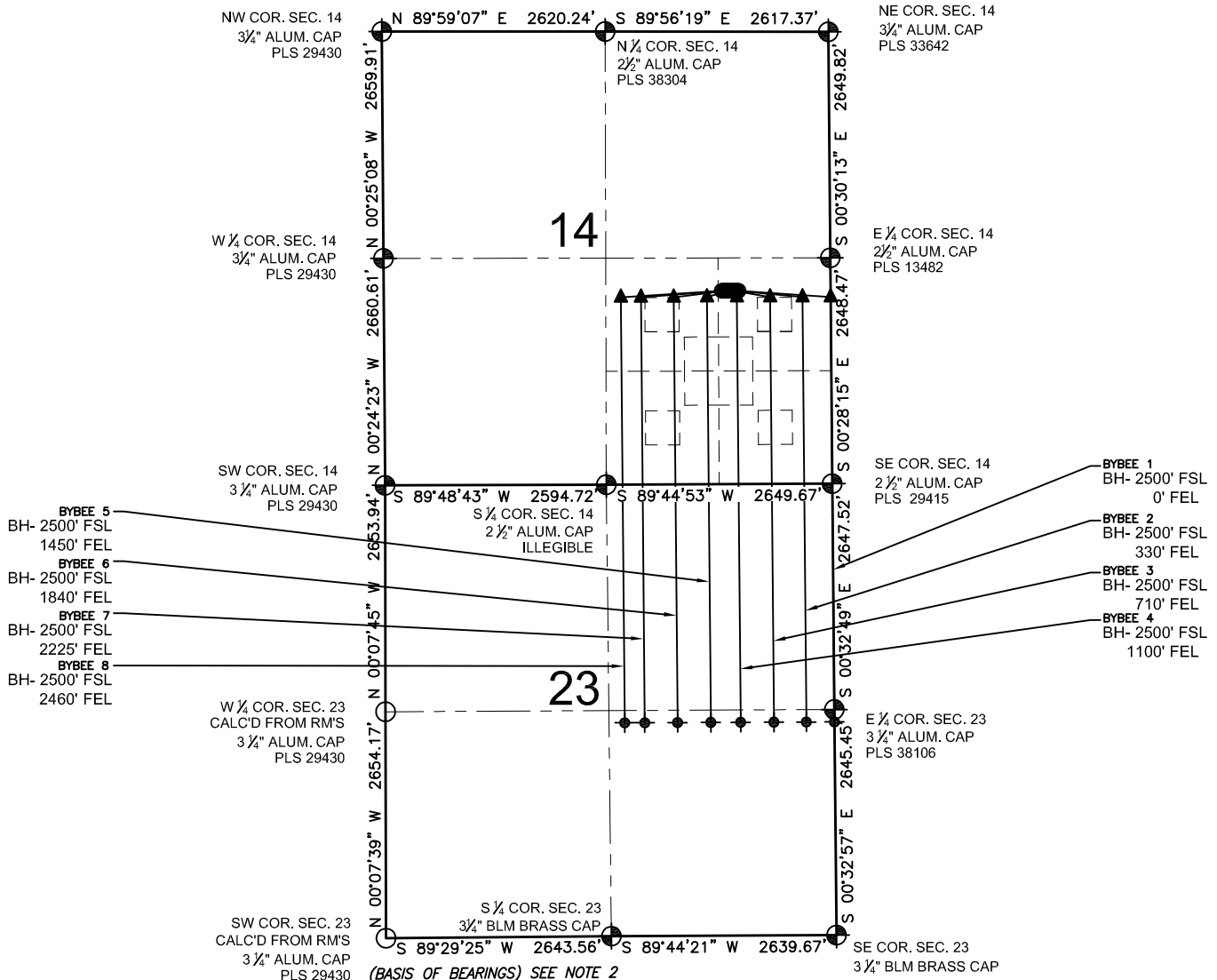


BYBEE 14-L PAD MULTI-WELL PLAN

SECTION 14, TOWNSHIP 2 NORTH, RANGE 68 WEST, 6TH P.M.



- ⊕ = EXISTING MONUMENT ⊙ = BOTTOM HOLE
 ○ = CALCULATED POSITION ▲ = LANDING POINT
 ● = PROPOSED WELL LP = LANDING POINT
 ◆ = EXISTING WELL BH = BOTTOM HOLE

NOTES:

- THIS FIELD SURVEY CONFORMS TO THE MINIMUM STANDARDS SET BY THE C.O.G.C.C., RULE NO. 215
- BEARINGS AND DISTANCE SHOWN HEREON ARE GRID AND BASED ON THE COLORADO STATE PLANE COORDINATE SYSTEM, NAD 83/2011 BETWEEN MONUMENTS AS LABELED HEREON AND ELEVATIONS SHOWN ARE NAVD 88, AS DERIVED BY GPS OBSERVATIONS.
- GRID DISTANCES ARE SHOWN, AS MEASURED IN THE FIELD, WITH TIES TO WELLS MEASURED PERPENDICULAR TO SECTION LINES.

NOTES:

- BYBEE 1 TO BE AT 2267' FSL, 1080' FEL.
 BOTTOM HOLE AT 2500' FSL & 0' FEL, SEC 23.
 BYBEE 2 TO BE AT 2267' FSL, 1108' FEL.
 BOTTOM HOLE AT 2500' FSL & 330' FEL, SEC 23.
 BYBEE 3 TO BE AT 2267' FSL, 1136' FEL.
 BOTTOM HOLE AT 2500' FSL & 710' FEL, SEC 23.
 BYBEE 4 TO BE AT 2268' FSL, 1164' FEL.
 BOTTOM HOLE AT 2500' FSL & 1100' FEL, SEC 23.
 BYBEE 5 TO BE AT 2268' FSL, 1192' FEL.
 BOTTOM HOLE AT 2500' FSL & 1450' FEL, SEC 23.
 BYBEE 6 TO BE AT 2268' FSL, 1220' FEL.
 BOTTOM HOLE AT 2500' FSL & 1840' FEL, SEC 23.
 BYBEE 7 TO BE AT 2268' FSL, 1248' FEL.
 BOTTOM HOLE AT 2500' FSL & 2225' FEL, SEC 23.
 BYBEE 8 TO BE AT 2268' FSL, 1276' FEL.
 BOTTOM HOLE AT 2500' FSL & 2460' FEL, SEC 23.

PREPARED BY:



EXTRACTION OIL & GAS

FIELD DATE: 07-17-14	PAD NAME: BYBEE 14-L PAD
DRAWING DATE: 10-21-14	SURFACE LOCATION: NE 1/4 SE 1/4, SEC. 14, T2N, R68W, 6TH P.M.
BY: SWW	CHECKED: MDCA
	WELD COUNTY, COLORADO

