

WHITING OIL & GAS CORP.

LOCATION DRAWING FOR

HORSETAIL #08D-1701, 1702, 1703,
1704, 1733, 1734, 1735 & 1736
SECTION 8, T10N, R57W, 6th. P.M.
NW 1/4 NW 1/4

SCALE: 1" = 300'

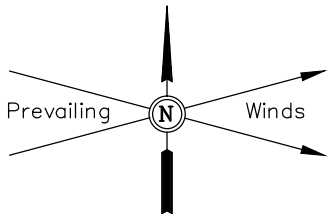
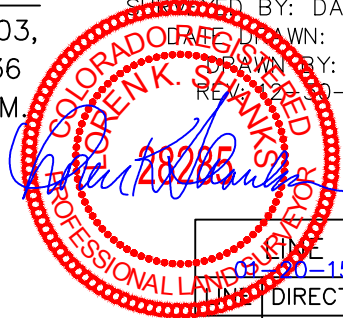
DATE SURVEYED: 12-09-14

SURVEYED BY: DALLAS NIELSEN

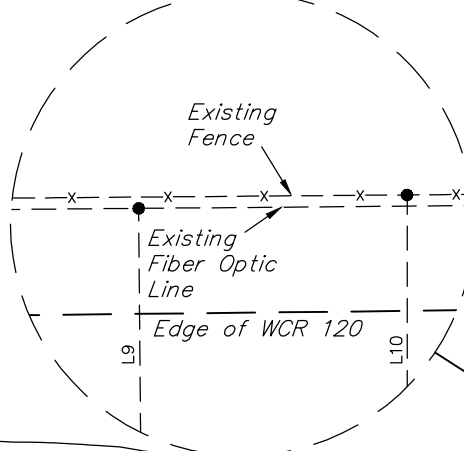
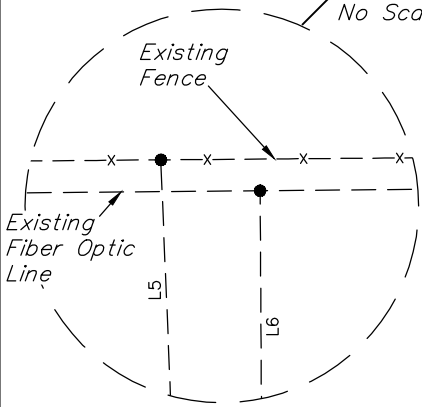
DRAWN: 12-20-13

CHECKED BY: H.K.W.

REV: 12-20-14 K.B.



Detail "A"
No Scale



Detail "B"
No Scale

	DIRECTION	LENGTH
L1	N89°W	156'
L2	N89°W	539'
L3	N63°W	552'
L4	N85°W	112'
L5	N02°W	41'
L6	NORTH	39'
L7	NORTH	297'
L8	N01°W	317'
L9	N01°W	355'
L10	NORTH	356'
L11	N48°E	254'
L12	S81°E	566'
L13	S81°E	208'

