

NOTE: PARCEL DATA SHOWN HAS BEEN OBTAINED FROM VARIOUS SOURCES AND SHOULD BE USED FOR MAPPING, GRAPHIC AND PLANNING PURPOSES ONLY. NO WARRANTY IS MADE BY UINTAH ENGINEERING AND LAND SURVEYING (UELS) FOR ACCURACY OF THE PARCEL DATA.

LEGEND:

- EXISTING ROAD
- PROPOSED ROAD
- 24" CULVERT REQUIRED
- 12" CULVERT REQUIRED
- CATTLE GUARD REQUIRED

GRMR OIL & GAS

**HAMILL #19-16HA & #19-16D
SECTION 19, T5N, R90W, 6th P.M.
SE 1/4 SE 1/4**



DRAWN BY: C.M.F.	DATE DRAWN: 10-29-14
SCALE: 1" = 2000'	REVISED: 11-13-14

ACCESS ROAD MAP

TOPO B







UELS, LLC
Corporate Office * 85 South 200 East
Vernal, UT 84078 * (435) 789-1017

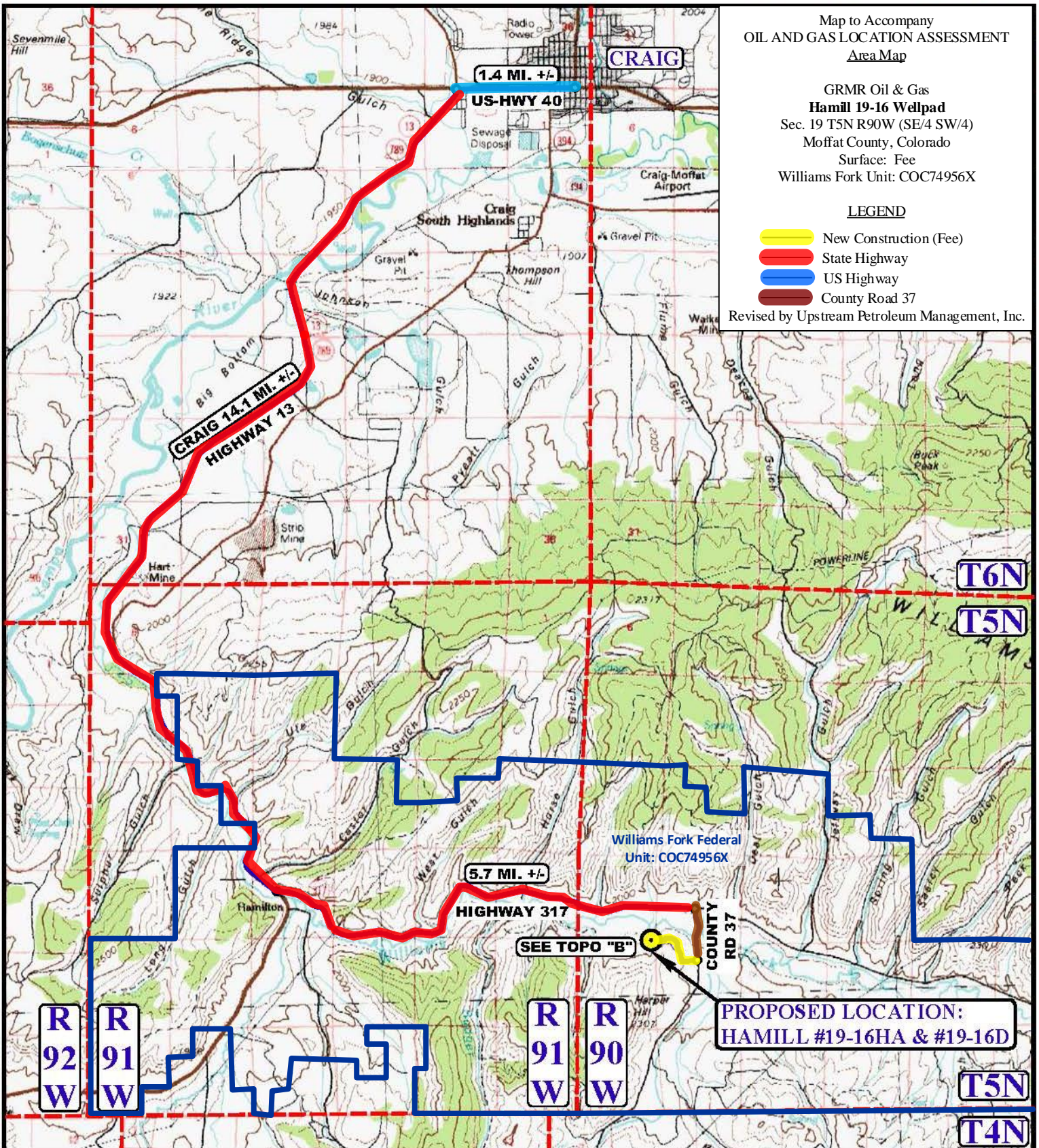
Map to Accompany
OIL AND GAS LOCATION ASSESSMENT
Area Map

GRMR Oil & Gas
Hamill 19-16 Wellpad
Sec. 19 T5N R90W (SE/4 SW/4)
Moffat County, Colorado
Surface: Fee
Williams Fork Unit: COC74956X

LEGEND

-  New Construction (Fee)
-  State Highway
-  US Highway
-  County Road 37

Revised by Upstream Petroleum Management, Inc.



LEGEND:

-  PROPOSED LOCATION

GRMR OIL & GAS

HAMILL #19-16HA & #19-16D
SECTION 19, T5N, R90W, 6th P.M.
SE 1/4 SE 1/4



UELS, LLC
Corporate Office * 85 South 200 East
Vernal, UT 84078 * (435) 789-1017

DRAWN BY: C.M.F.	DATE DRAWN: 10-29-14
SCALE: 1:100,000	REVISED: 11-13-14
ACCESS ROAD MAP	TOPO A