

FINISHED GRADE ELEVATION = 6446.4'

**NOTES:**

- Flare Pit is to be located a min. of 100' from the wellhead.
- Round corners at 35' radius or as needed.
- Contours shown at 2' intervals.

**GRMR OIL & GAS**

**HAMIL #19-16HA & #19-16D  
SECTION 19, T5N, R90W, 6th P.M.  
SE 1/4 SE 1/4**

DRAWN BY: J.P.	DATE DRAWN: 10-14-14
SCALE: 1" = 60'	REVISED: 11-20-14 J.P.

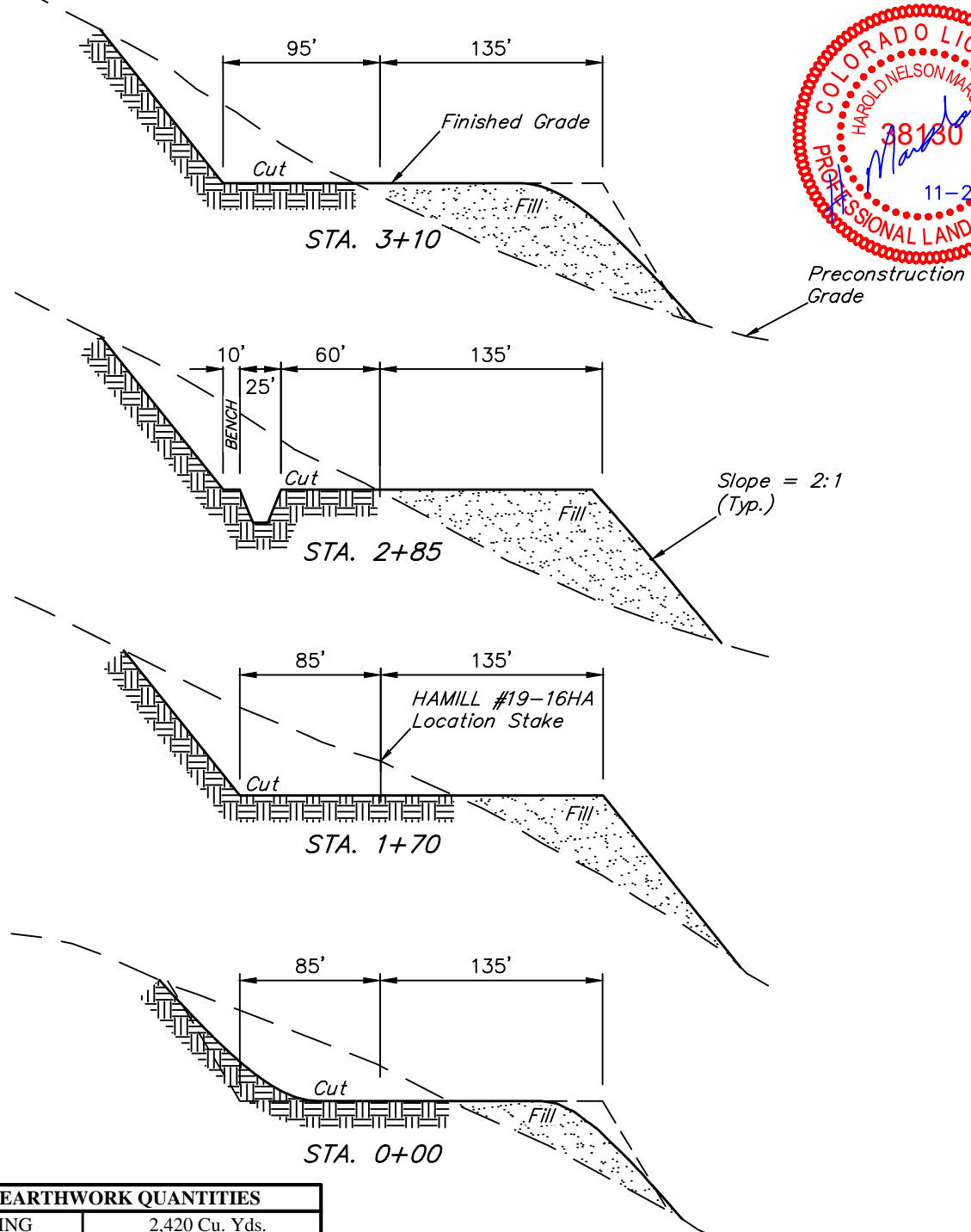
**CONSTRUCTION LAYOUT**

**FIGURE #1**



**UELS, LLC**  
Corporate Office \* 85 South 200 East  
Vernal, UT 84078 \* (435) 789-1017

1" = 40'  
 X-Section Scale  
 1" = 100'



APPROXIMATE EARTHWORK QUANTITIES	
(6") TOPSOIL STRIPPING	2,420 Cu. Yds.
REMAINING LOCATION	25,100 Cu. Yds.
<b>TOTAL CUT</b>	<b>27,520 Cu. Yds.</b>
<b>FILL</b>	<b>25,000 Cu. Yds.</b>
EXCESS MATERIAL	2,520 Cu. Yds.
TOPSOIL & PIT BACKFILL (1/2 Pit Vol.)	2,520 Cu. Yds.
<b>EXCESS UNBALANCE</b> (After Interim Rehabilitation)	<b>0 Cu. Yds.</b>

APPROXIMATE SURFACE DISTURBANCE AREAS		
	DISTANCE	ACRES
WELL SITE DISTURBANCE	NA	±3.252
30' WIDE ACCESS ROAD R-O-W DISTURBANCE	±3,151'	±2.170
<b>TOTAL SURFACE USE AREA</b>		<b>±5.422</b>

**NOTES:**

- Fill quantity includes 5% for compaction.
- Calculations based on 6" of topsoil stripping.
- Topsoil should not be stripped below finished grade on substructure area.

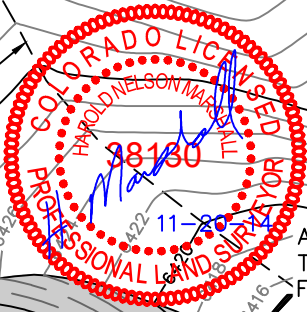
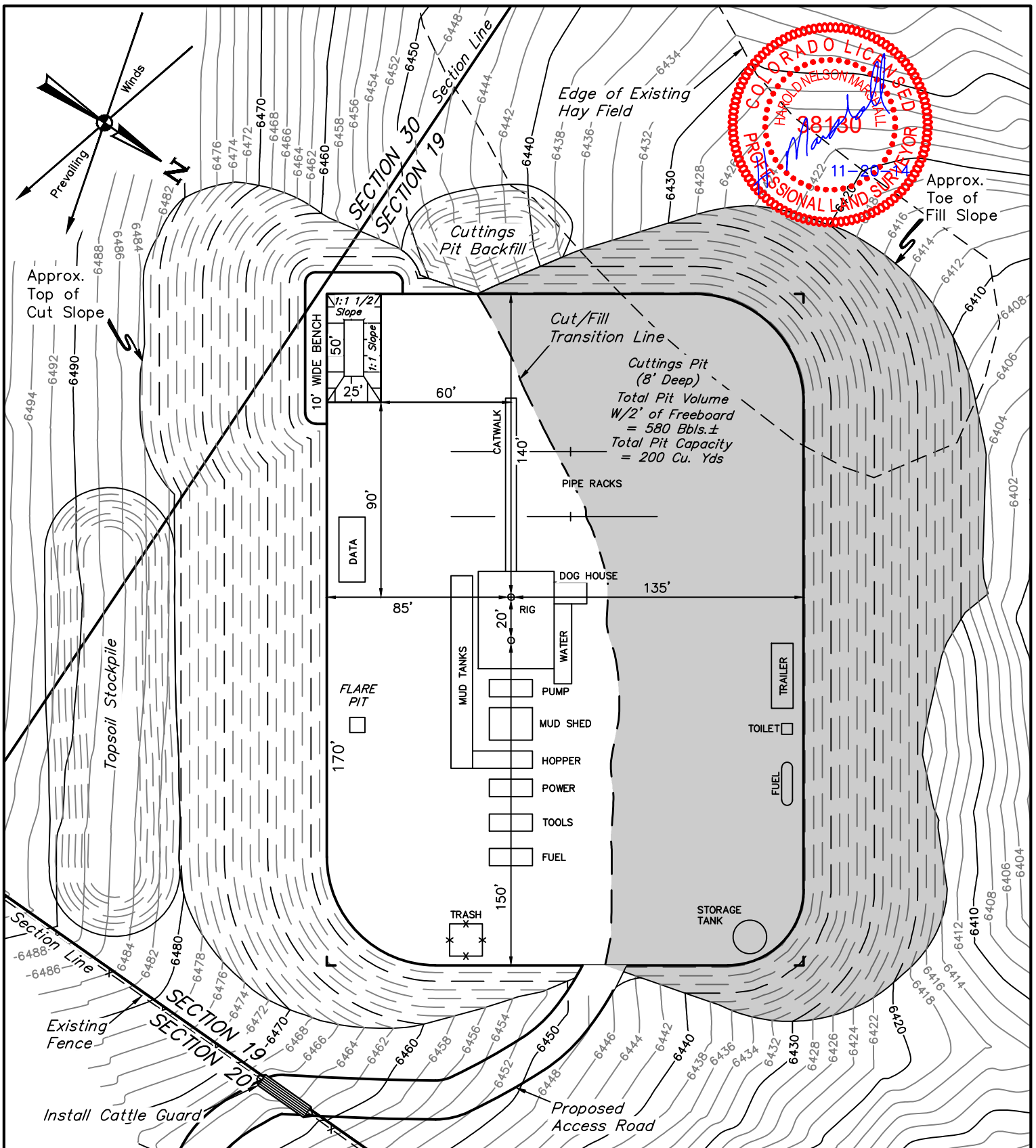
**GRMR OIL & GAS**

**HAMILL #19-16HA & #19-16D  
 SECTION 19, T5N, R90W, 6th P.M.  
 SE 1/4 SE 1/4**



**UELS, LLC**  
 Corporate Office \* 85 South 200 East  
 Vernal, UT 84078 \* (435) 789-1017

DRAWN BY: J.P.	DATE DRAWN: 10-14-14
SCALE: AS SHOWN	REVISED: 11-20-14 J.P.
<b>CONSTRUCTION LAYOUT CROSS SECTIONS</b>	<b>FIGURE #2</b>



**NOTES:**

- Flare Pit is to be located a min. of 100' from the wellhead.
- Contours shown at 2' intervals.

**GRMR OIL & GAS**

**HAMILL #19-16HA & #19-16D  
SECTION 19, T5N, R90W, 6th P.M.  
SE 1/4 SE 1/4**



**UELS, LLC**  
Corporate Office \* 85 South 200 East  
Vernal, UT 84078 \* (435) 789-1017

DRAWN BY: J.P.	DATE DRAWN: 10-14-14
SCALE: 1" = 60'	REVISED: 11-20-14 J.P.

**TYPICAL RIG LAYOUT** **FIGURE #3**