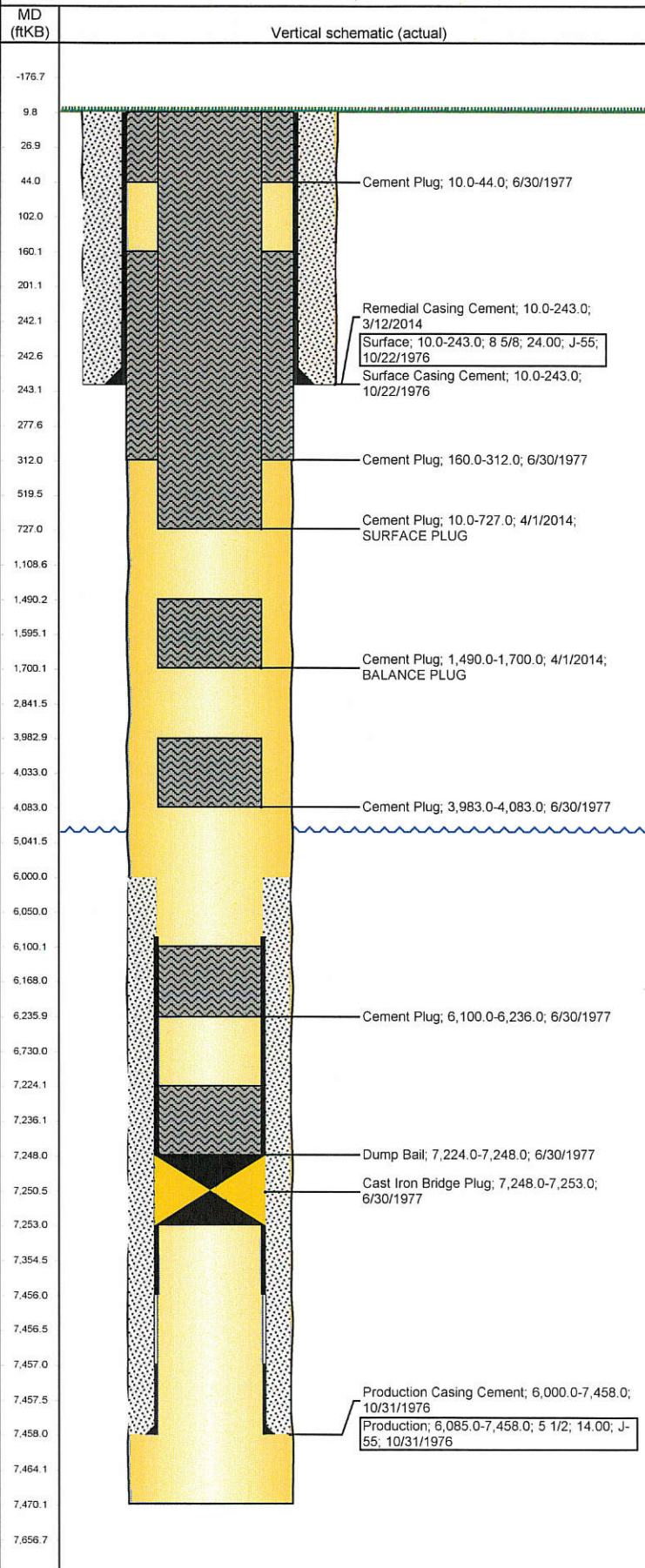


Well Name: CHAMPLIN AMOCO 01 309

VERTICAL - ORIGINAL HOLE, 2/25/2015 9:36:40 AM



Well Header

API	Business Unit	District	Well Config
05-123-08999	DJ BASIN	15	VERTICAL
Original KB Elevation (ft)	KB - GL / MSL (ftKB)	Spud Date	P & A Date
4,710.00	10.00	10/22/1976	4/1/2014

Comment

P&A 4-1-14

Directions To Well

WCR 74 & WCR 63, 0.5 NORTH TO FOSS BATTERY, 0.1 EAST

Current PBTD (ftKB)

Surface Location (Congressional)

Quarter 1	Quarter 2	Quarter 3	Quarter 4	Section	Township	Twntshp N...	Range	Rng E/W Dir
				5	6	N	63	W

Bottom Hole Location

North-South Distance (ft)	From N or S Line	East-West Distance (ft)	From E or W Line
---------------------------	------------------	-------------------------	------------------

Plug Back Total Depths

Date	Depth (ftKB)	Method	Com

Wellbore Sections

Section Des	Size (in)	Act Top, MD (ftKB)	Act Btm, MD (ftKB)
SURFACE	12 1/4	10.0	243.0
PRODUCTION	7 7/8	243.0	7,470.0

Zone Statuses

Zone Name	Status Date	Status	Fluid Type	Job

Casing Strings

Csg Des	Run Date	OD (in)	Wt/Len (lb/ft)	Grade	Top, MD (ftKB)	MD (ftKB)
Surface	10/22/1976	8 5/8	24.00	J-55	10.0	243.0
Production	10/31/1976	5 1/2	14.00	J-55	10.0	7,458.0

Cement

Des	Top (ftKB)	Btm (ftKB)
Surface Casing Cement	10.0	243.0
Production Casing Cement	6,000.0	7,458.0
Dump Bail	7,224.0	7,248.0
Cement Plug	6,100.0	6,236.0
Cement Plug	3,983.0	4,083.0
Cement Plug	160.0	312.0
Cement Plug	10.0	44.0
Remedial Casing Cement	10.0	243.0
Cement Plug	10.0	727.0
Cement Plug	1,490.0	1,700.0

Tubing Components

Item Des	OD (in)	Wt (lb/ft)	Grade	Jts	Len (ft)

Perforation Data

Zone	Bnch/St g	Entered Shot Total	Top (ftKB)	Btm (ftKB)	Date

Other In Hole

Run Date	Des	OD (in)	Top (ftKB)	Btm (ftKB)
6/30/1977	Cast Iron Bridge Plug	5 1/2	7,248.0	7,253.0

Logs

Date	Type	Top, MD (ftKB)	Btm, MD (ftKB)
10/29/1976	COMPENSATED DENSITY	3,300.0	7,464.0
10/29/1976	INDUCTION	253.0	7,464.0