

BONANZA CREEK ENERGY INC.

WELD COUNTY, COLORADO (NAD 83)

NW NW SEC. 22 T5N R61W 6th P.M.

PRONGHORN K-O-22HNB

JOB # 2009-446

04 February, 2015

Survey: FINAL SURVEYS





Project: WELD COUNTY, COLORADO (NAD 83)
Site: NW NW SEC. 22 T5N R61W 6th P.M.
Well: PRONGHORN K-O-22HNB
Wellbore: JOB # 2009-446
Design: FINAL SURVEYS

ANNOTATIONS

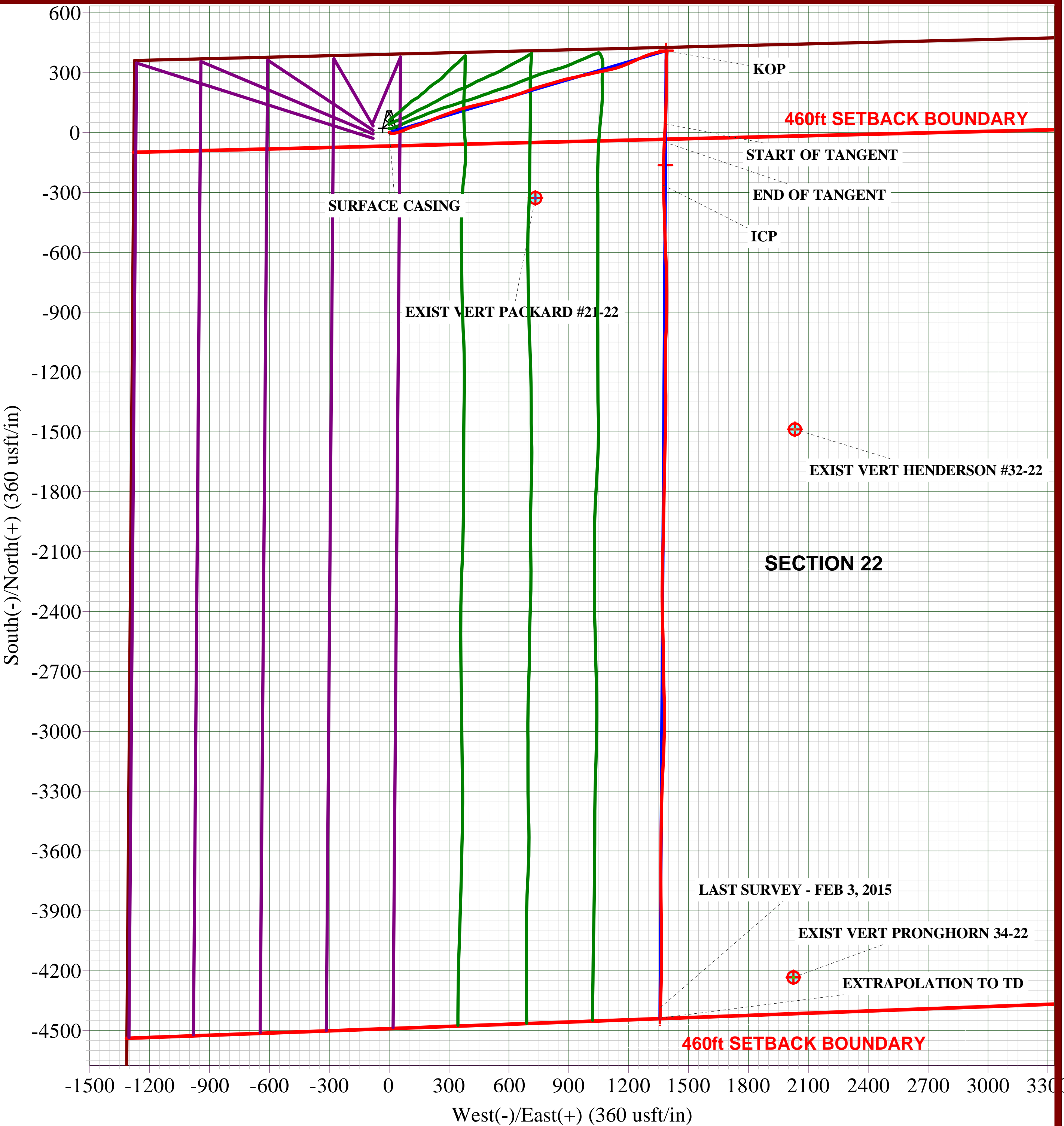
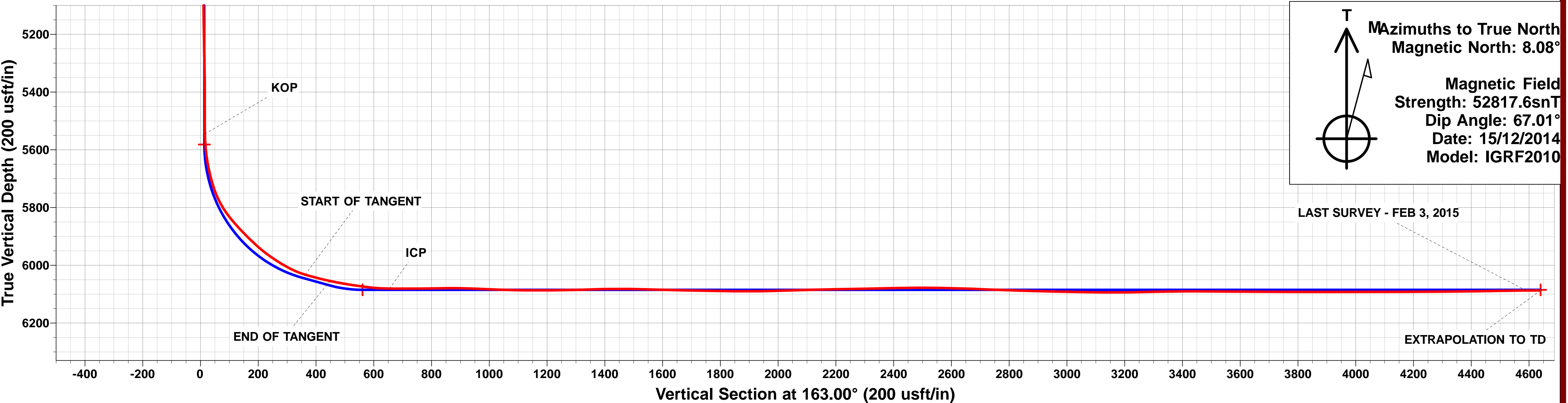
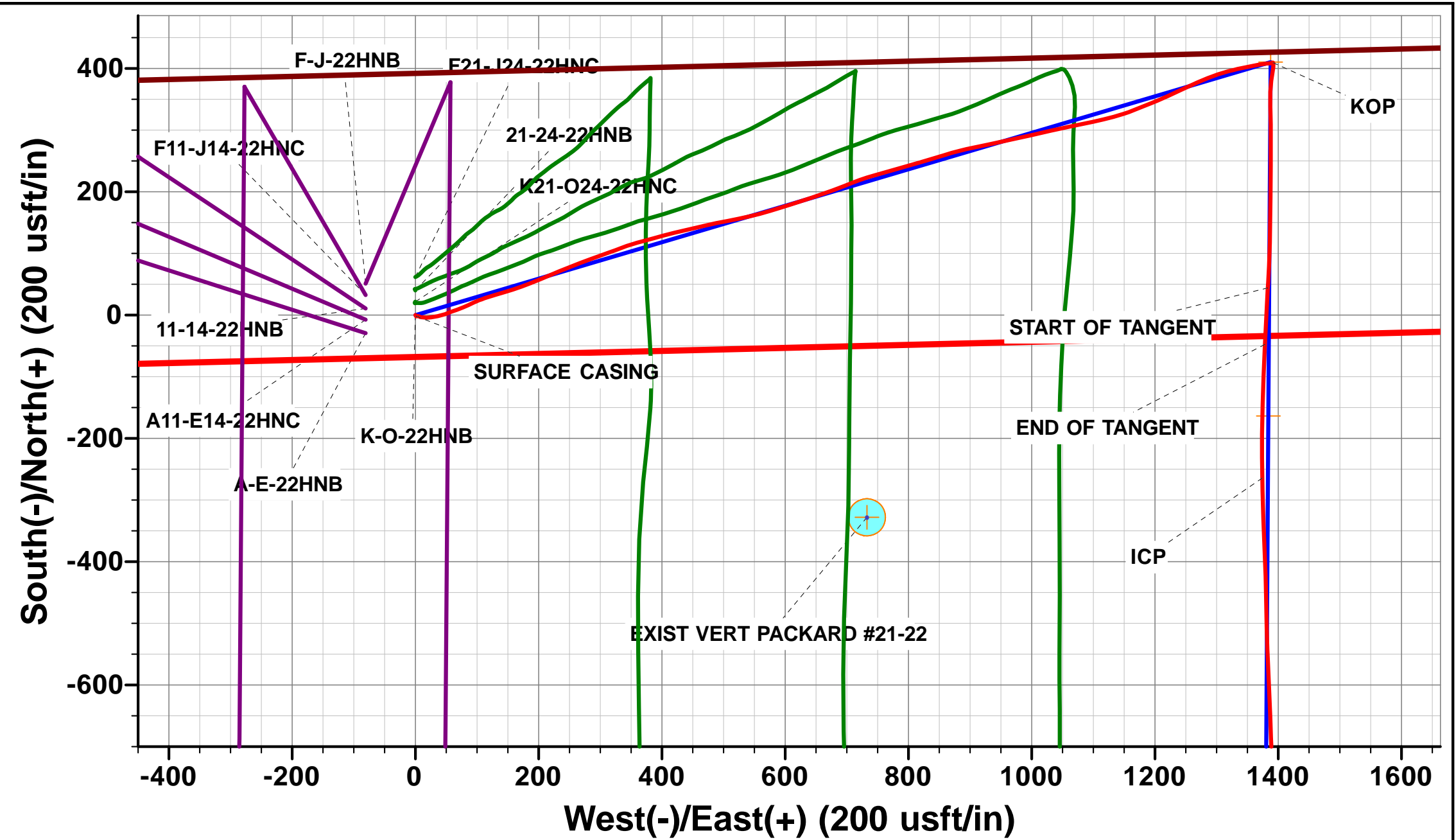
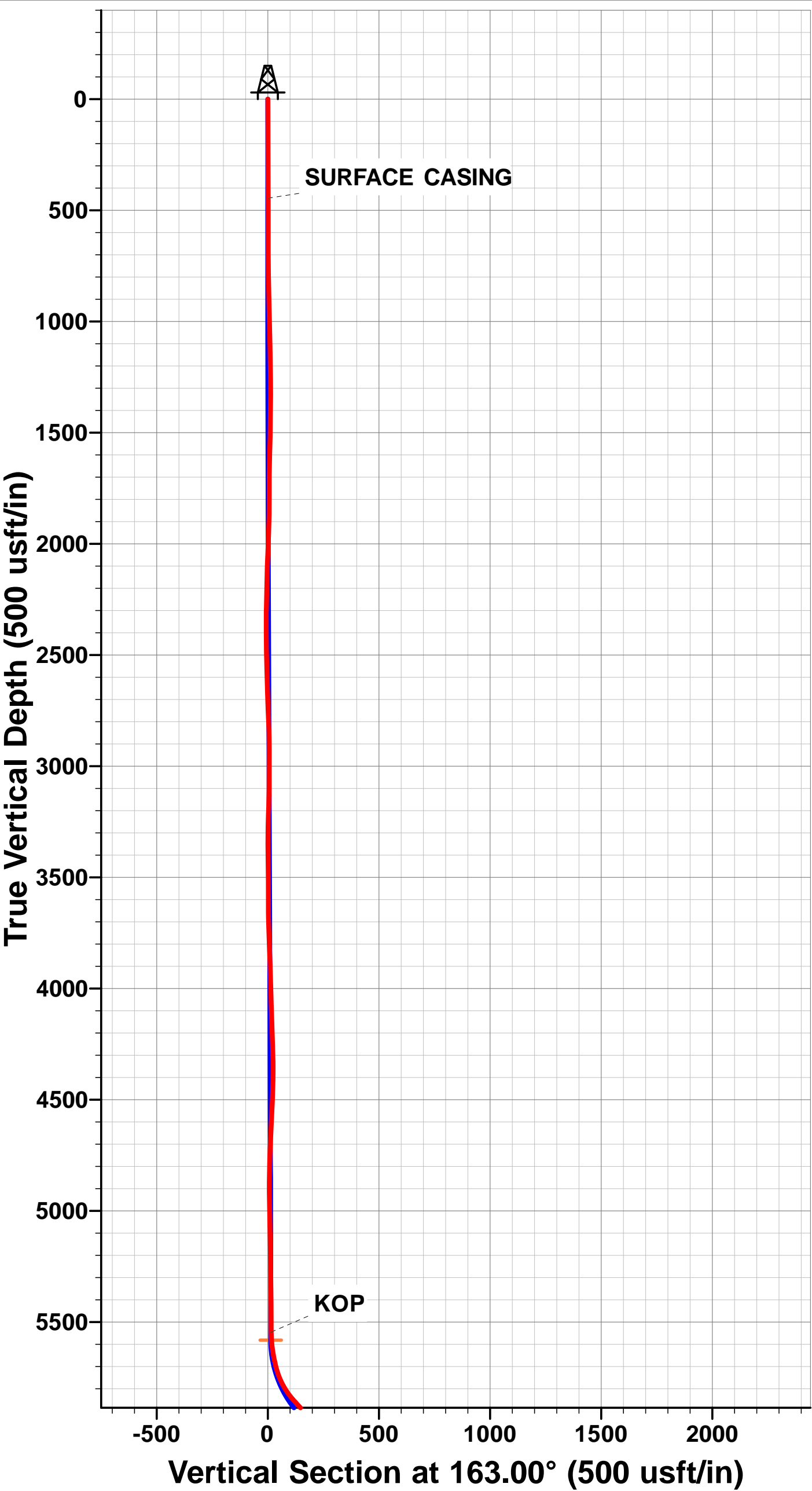
TVD	MD	Inc	Azi	+N/-S	+E/-W	VSect	Dep	Annotation
446.0	446.0	0.44	146.30	-1.4	0.9	1.6	1.9	SURFACE CASING
5545.1	5800.0	1.54	137.19	409.6	1391.8	15.3	1460.2	KOP
6032.6	6452.0	74.36	183.46	44.0	1383.2	362.3	1826.3	START OF TANGENT
6054.6	6546.0	78.56	182.78	-47.2	1378.6	448.3	1917.6	END OF TANGENT
6080.7	6765.0	88.94	178.99	-264.3	1374.1	654.6	2134.8	ICP
6087.4	10887.0	90.20	182.00	-4384.4	1358.9	4590.1	6256.0	LAST SURVEY - FEB 3, 2015
6087.2	10939.9	90.20	182.00	-4437.3	1357.1	4640.1	6308.9	EXTRAPOLATION TO TD

AS DRILLED LOCAL COORDINATES:

SHL: 392ft FNL & 1278ft FWL Sec 22
7" ICP: 690ft FNL & 2654ft FWL Sec 22
TOP PRODUCTION: 769ft FNL & 2657ft FWL Sec 22
BHL: 470ft FSL & 2666.3ft FWL of Sec 22

WELLBORE TARGET DETAILS (LAT/LONG)

Name	TVD	+N/-S	+E/-W	Latitude	Longitude
7" ICP *NEW* - PRONGHORN K-O-22HNB (P4)	6085.0	-163.6	1384.0	40.392141	-104.194881
BHL - PRONGHORN K-O-22HNB (P4)	6085.0	-4437.3	1356.8	40.380410	-104.194980
KOP - PRONGHORN K-O-22HNB (P4)	5581.7	410.4	1387.7	40.393716	-104.194868



Survey Report



Company:	BONANZA CREEK ENERGY INC.	Local Co-ordinate Reference:	Well PRONGHORN K-O-22HNB
Project:	WELD COUNTY, COLORADO (NAD 83)	TVD Reference:	KB-EST @ 4678.0usft (Original Well Elev)
Site:	NW NW SEC. 22 T5N R61W 6th P.M.	MD Reference:	KB-EST @ 4678.0usft (Original Well Elev)
Well:	PRONGHORN K-O-22HNB	North Reference:	True
Wellbore:	JOB # 2009-446	Survey Calculation Method:	Minimum Curvature
Design:	FINAL SURVEYS	Database:	EDM 5000.1 Single User Db

Project	WELD COUNTY, COLORADO (NAD 83)		
Map System:	US State Plane 1983	System Datum:	Mean Sea Level
Geo Datum:	North American Datum 1983		
Map Zone:	Colorado Northern Zone		Using geodetic scale factor

Site	NW NW SEC. 22 T5N R61W 6th P.M.				
Site Position:		Northing:	1,388,515.79 usft	Latitude:	40.392590
From:	Lat/Long	Easting:	3,362,131.84 usft	Longitude:	-104.199850
Position Uncertainty:	0.0 usft	Slot Radius:	1.10000 ft	Grid Convergence:	0.84 °

Well	PRONGHORN K-O-22HNB					
Well Position	+N/-S	0.0 usft	Northing:	1,388,515.77 usft	Latitude:	40.392590
	+E/-W	0.0 usft	Easting:	3,362,131.84 usft	Longitude:	-104.199850
Position Uncertainty		0.0 usft	Wellhead Elevation:	usft	Ground Level:	4,661.0 usft

Wellbore	JOB # 2009-446				
Magnetics	Model Name	Sample Date	Declination (°)	Dip Angle (°)	Field Strength (nT)
	IGRF2010	15/12/2014	8.08	67.01	52,818

Design	FINAL SURVEYS				
Audit Notes:					
Version:	1.0	Phase:	ACTUAL	Tie On Depth:	0.0
Vertical Section:	Depth From (TVD) (usft)		+N/-S (usft)	+E/-W (usft)	Direction (°)
	0.0		0.0	0.0	163.00

Survey Program	Date	04/02/2015			
From (usft)	To (usft)	Survey (Wellbore)	Tool Name	Description	
508.0	10,939.9	FINAL SURVEYS (JOB # 2009-446)	MWD	MWD - Standard	

Survey										
Measured Depth (usft)	Inclination (°)	Azimuth (°)	Vertical Depth (usft)	Subsea Depth (usft)	+N/-S (usft)	+E/-W (usft)	Vertical Section (usft)	Dogleg Rate (°/100usft)	Build Rate (°/100usft)	Turn Rate (°/100usft)
0.0	0.00	0.00	0.0	4,678.0	0.0	0.0	0.0	0.00	0.00	0.00
SURFACE CASING										
446.0	0.44	146.30	446.0	4,232.0	-1.4	0.9	1.6	0.10	0.10	0.00
508.0	0.50	146.30	508.0	4,170.0	-1.8	1.2	2.1	0.10	0.10	0.00
601.0	0.60	61.70	601.0	4,077.0	-2.0	1.9	2.4	0.80	0.11	-90.97
694.0	1.40	66.70	694.0	3,984.0	-1.3	3.4	2.2	0.86	0.86	5.38
787.0	1.30	125.50	787.0	3,891.0	-1.4	5.3	2.9	1.43	-0.11	63.23
878.0	1.60	120.20	877.9	3,800.1	-2.7	7.2	4.7	0.36	0.33	-5.82
968.0	4.30	94.40	967.8	3,710.2	-3.6	11.6	6.8	3.27	3.00	-28.67
1,058.0	3.90	96.20	1,057.6	3,620.4	-4.2	18.1	9.3	0.47	-0.44	2.00
1,151.0	5.50	76.30	1,150.3	3,527.7	-3.4	25.5	10.8	2.43	1.72	-21.40
1,243.0	7.80	84.20	1,241.6	3,436.4	-1.8	36.0	12.2	2.68	2.50	8.59
1,336.0	8.30	65.50	1,333.7	3,344.3	1.7	48.4	12.6	2.85	0.54	-20.11

Survey Report



Company:	BONANZA CREEK ENERGY INC.	Local Co-ordinate Reference:	Well PRONGHORN K-O-22HNB
Project:	WELD COUNTY, COLORADO (NAD 83)	TVD Reference:	KB-EST @ 4678.0usft (Original Well Elev)
Site:	NW NW SEC. 22 T5N R61W 6th P.M.	MD Reference:	KB-EST @ 4678.0usft (Original Well Elev)
Well:	PRONGHORN K-O-22HNB	North Reference:	True
Wellbore:	JOB # 2009-446	Survey Calculation Method:	Minimum Curvature
Design:	FINAL SURVEYS	Database:	EDM 5000.1 Single User Db

Survey										
Measured Depth (usft)	Inclination (°)	Azimuth (°)	Vertical Depth (usft)	Subsea Depth (usft)	+N/-S (usft)	+E/-W (usft)	Vertical Section (usft)	Dogleg Rate (°/100usft)	Build Rate (°/100usft)	Turn Rate (°/100usft)
1,429.0	9.60	72.30	1,425.6	3,252.4	6.8	61.9	11.6	1.80	1.40	7.31
1,520.0	11.40	67.10	1,515.1	3,162.9	12.6	77.4	10.6	2.23	1.98	-5.71
1,612.0	13.00	64.50	1,605.0	3,073.0	20.6	95.1	8.1	1.84	1.74	-2.83
1,704.0	17.10	72.70	1,693.8	2,984.2	29.1	117.4	6.5	5.01	4.46	8.91
1,795.0	18.60	73.90	1,780.5	2,897.5	37.1	144.1	6.7	1.70	1.65	1.32
1,887.0	19.60	70.10	1,867.4	2,810.6	46.4	172.7	6.1	1.73	1.09	-4.13
1,981.0	20.10	66.80	1,955.8	2,722.2	58.1	202.4	3.6	1.31	0.53	-3.51
2,076.0	21.80	67.50	2,044.5	2,633.5	71.3	233.7	0.1	1.81	1.79	0.74
2,172.0	22.20	69.20	2,133.5	2,544.5	84.6	267.1	-2.8	0.78	0.42	1.77
2,267.0	23.30	70.80	2,221.1	2,456.9	97.1	301.7	-4.7	1.33	1.16	1.68
2,362.0	20.70	69.10	2,309.2	2,368.8	109.3	335.1	-6.5	2.82	-2.74	-1.79
2,457.0	22.60	75.50	2,397.5	2,280.5	119.9	368.5	-6.9	3.19	2.00	6.74
2,552.0	21.30	74.50	2,485.6	2,192.4	129.0	402.8	-5.6	1.42	-1.37	-1.05
2,647.0	22.00	77.50	2,573.9	2,104.1	137.5	436.8	-3.8	1.38	0.74	3.16
2,743.0	21.40	76.70	2,663.1	2,014.9	145.4	471.4	-1.2	0.70	-0.62	-0.83
2,837.0	23.00	79.40	2,750.2	1,927.8	152.8	506.1	1.9	2.02	1.70	2.87
2,931.0	22.40	77.10	2,836.9	1,841.1	160.1	541.6	5.2	1.14	-0.64	-2.45
3,026.0	21.10	73.30	2,925.1	1,752.9	169.1	575.6	6.6	2.02	-1.37	-4.00
3,121.0	22.10	72.20	3,013.5	1,664.5	179.5	609.0	6.5	1.14	1.05	-1.16
3,216.0	21.80	71.80	3,101.6	1,576.4	190.4	642.8	5.8	0.35	-0.32	-0.42
3,311.0	20.90	69.60	3,190.0	1,488.0	201.9	675.4	4.5	1.27	-0.95	-2.32
3,406.0	23.50	68.50	3,278.0	1,400.0	214.7	709.0	2.0	2.77	2.74	-1.16
3,500.0	23.70	74.40	3,364.1	1,313.9	226.7	744.6	1.0	2.52	0.21	6.28
3,596.0	24.30	74.10	3,451.8	1,226.2	237.3	782.2	1.8	0.64	0.62	-0.31
3,692.0	24.20	74.20	3,539.4	1,138.6	248.0	820.1	2.6	0.11	-0.10	0.10
3,787.0	24.30	72.20	3,626.0	1,052.0	259.3	857.5	2.8	0.87	0.11	-2.11
3,883.0	22.40	77.80	3,714.1	963.9	269.2	894.1	4.0	3.04	-1.98	5.83
3,977.0	22.50	77.80	3,801.0	877.0	276.8	929.2	7.0	0.11	0.11	0.00
4,071.0	21.60	78.60	3,888.1	789.9	284.0	963.8	10.2	1.01	-0.96	0.85
4,165.0	21.60	76.50	3,975.5	702.5	291.5	997.6	13.0	0.82	0.00	-2.23
4,260.0	21.30	77.80	4,064.0	614.0	299.2	1,031.4	15.5	0.59	-0.32	1.37
4,355.0	20.90	77.80	4,152.6	525.4	306.4	1,064.9	18.3	0.42	-0.42	0.00
4,452.0	21.10	78.50	4,243.1	434.9	313.6	1,098.9	21.5	0.33	0.21	0.72
4,547.0	22.10	74.70	4,331.5	346.5	321.7	1,132.9	23.6	1.81	1.05	-4.00
4,642.0	19.90	68.90	4,420.2	257.8	332.2	1,165.2	23.0	3.18	-2.32	-6.11
4,738.0	19.60	67.10	4,510.5	167.5	344.4	1,195.3	20.2	0.71	-0.31	-1.87
4,834.0	19.50	65.30	4,601.0	77.0	357.3	1,224.7	16.4	0.64	-0.10	-1.87
4,928.0	18.90	65.80	4,689.8	-11.8	370.1	1,252.8	12.4	0.66	-0.64	0.53
5,022.0	17.90	66.80	4,779.0	-101.0	382.1	1,280.0	8.9	1.12	-1.06	1.06
5,118.0	15.10	72.40	4,871.0	-193.0	391.7	1,305.5	7.2	3.35	-2.92	5.83
5,214.0	13.70	77.10	4,964.0	-286.0	398.0	1,328.5	7.9	1.90	-1.46	4.90
5,310.0	10.60	78.90	5,057.8	-379.8	402.2	1,348.2	9.6	3.25	-3.23	1.87
5,405.0	8.20	79.00	5,151.5	-473.5	405.2	1,363.4	11.2	2.53	-2.53	0.11
5,501.0	6.90	80.90	5,246.7	-568.7	407.4	1,375.8	12.7	1.38	-1.35	1.98
5,596.0	3.70	89.70	5,341.3	-663.3	408.3	1,384.6	14.4	3.47	-3.37	9.26
5,691.0	1.90	62.70	5,436.2	-758.2	409.1	1,389.0	15.0	2.30	-1.89	-28.42
5,787.0	1.30	94.60	5,532.1	-854.1	409.7	1,391.5	15.1	1.10	-0.62	33.23
KOP										
5,800.0	1.54	137.19	5,545.1	-867.1	409.6	1,391.8	15.3	8.11	1.82	327.61
5,835.0	3.90	174.60	5,580.1	-902.1	408.0	1,392.2	16.9	8.11	6.75	106.89
5,883.0	8.80	185.40	5,627.8	-949.8	402.8	1,392.0	21.9	10.46	10.21	22.50
5,931.0	14.00	189.30	5,674.8	-996.8	393.4	1,390.7	30.5	10.95	10.83	8.12
5,979.0	18.20	188.70	5,720.9	-1,042.9	380.2	1,388.7	42.4	8.76	8.75	-1.25

Survey Report



Company:	BONANZA CREEK ENERGY INC.	Local Co-ordinate Reference:	Well PRONGHORN K-O-22HNB
Project:	WELD COUNTY, COLORADO (NAD 83)	TVD Reference:	KB-EST @ 4678.0usft (Original Well Elev)
Site:	NW NW SEC. 22 T5N R61W 6th P.M.	MD Reference:	KB-EST @ 4678.0usft (Original Well Elev)
Well:	PRONGHORN K-O-22HNB	North Reference:	True
Wellbore:	JOB # 2009-446	Survey Calculation Method:	Minimum Curvature
Design:	FINAL SURVEYS	Database:	EDM 5000.1 Single User Db

Survey										
Measured Depth (usft)	Inclination (°)	Azimuth (°)	Vertical Depth (usft)	Subsea Depth (usft)	+N/-S (usft)	+E/-W (usft)	Vertical Section (usft)	Dogleg Rate (°/100usft)	Build Rate (°/100usft)	Turn Rate (°/100usft)
6,027.0	25.70	181.10	5,765.4	-1,087.4	362.4	1,387.3	59.1	16.68	15.62	-15.83
6,074.0	33.70	178.90	5,806.2	-1,128.2	339.1	1,387.4	81.4	17.18	17.02	-4.68
6,122.0	41.60	179.30	5,844.2	-1,166.2	309.8	1,387.8	109.5	16.47	16.46	0.83
6,170.0	44.70	180.10	5,879.2	-1,201.2	277.0	1,388.0	141.0	6.56	6.46	1.67
6,218.0	47.30	180.40	5,912.6	-1,234.6	242.5	1,387.8	173.9	5.44	5.42	0.62
6,265.0	50.80	180.40	5,943.4	-1,265.4	207.0	1,387.6	207.8	7.45	7.45	0.00
6,313.0	57.00	180.60	5,971.6	-1,293.6	168.2	1,387.3	244.8	12.92	12.92	0.42
6,361.0	60.00	180.80	5,996.7	-1,318.7	127.3	1,386.8	283.8	6.26	6.25	0.42
6,409.0	66.60	182.80	6,018.3	-1,340.3	84.5	1,385.4	324.3	14.24	13.75	4.17
6,455.0	74.90	183.50	6,033.4	-1,355.4	41.1	1,383.0	365.1	18.10	18.04	1.52
6,503.0	76.50	182.60	6,045.3	-1,367.3	-5.3	1,380.5	408.7	3.80	3.33	-1.87
START OF TANGENT										
6,546.0	78.56	182.78	6,054.6	-1,376.6	-47.2	1,378.6	448.3	4.81	4.79	0.42
6,551.0	78.80	182.80	6,055.5	-1,377.5	-52.1	1,378.3	452.9	4.81	4.79	0.41
6,599.0	81.30	182.10	6,063.8	-1,385.8	-99.4	1,376.3	497.5	5.40	5.21	-1.46
6,646.0	82.00	181.90	6,070.7	-1,392.7	-145.8	1,374.7	541.4	1.55	1.49	-0.43
6,694.0	83.50	180.40	6,076.7	-1,398.7	-193.4	1,373.7	586.7	4.40	3.12	-3.12
6,732.0	87.60	179.60	6,079.7	-1,401.7	-231.3	1,373.7	622.9	10.99	10.79	-2.11
ICP										
6,765.0	88.94	178.99	6,080.7	-1,402.7	-264.3	1,374.1	654.6	4.47	4.07	-1.85
6,786.0	89.80	178.60	6,080.9	-1,402.9	-285.3	1,374.6	674.8	4.47	4.07	-1.85
6,878.0	90.50	177.40	6,080.6	-1,402.6	-377.2	1,377.8	763.6	1.51	0.76	-1.30
6,970.0	90.90	179.20	6,079.5	-1,401.5	-469.2	1,380.5	852.3	2.00	0.43	1.96
7,061.0	87.50	177.30	6,080.8	-1,402.8	-560.1	1,383.3	940.1	4.28	-3.74	-2.09
7,155.0	87.90	177.80	6,084.6	-1,406.6	-654.0	1,387.3	1,031.0	0.68	0.43	0.53
7,250.0	89.60	179.10	6,086.6	-1,408.6	-748.9	1,389.9	1,122.6	2.25	1.79	1.37
7,345.0	90.20	180.00	6,086.8	-1,408.8	-843.9	1,390.6	1,213.6	1.14	0.63	0.95
7,440.0	91.70	181.90	6,085.2	-1,407.2	-938.9	1,389.0	1,304.0	2.55	1.58	2.00
7,534.0	91.70	182.50	6,082.4	-1,404.4	-1,032.7	1,385.4	1,392.7	0.64	0.00	0.64
7,630.0	88.80	180.10	6,082.0	-1,404.0	-1,128.7	1,383.3	1,483.8	3.92	-3.02	-2.50
7,725.0	88.40	178.50	6,084.3	-1,406.3	-1,223.7	1,384.4	1,575.0	1.74	-0.42	-1.68
7,821.0	88.80	179.50	6,086.7	-1,408.7	-1,319.6	1,386.1	1,667.2	1.12	0.42	1.04
7,917.0	89.10	181.00	6,088.4	-1,410.4	-1,415.6	1,385.7	1,758.9	1.59	0.31	1.56
8,013.0	89.20	181.40	6,089.9	-1,411.9	-1,511.6	1,383.7	1,850.1	0.43	0.10	0.42
8,108.0	90.80	181.70	6,089.9	-1,411.9	-1,606.5	1,381.1	1,940.2	1.71	1.68	0.32
8,203.0	92.10	180.80	6,087.5	-1,409.5	-1,701.5	1,379.0	2,030.3	1.66	1.37	-0.95
8,298.0	91.30	180.80	6,084.6	-1,406.6	-1,796.4	1,377.7	2,120.8	0.84	-0.84	0.00
8,393.0	90.80	181.20	6,082.9	-1,404.9	-1,891.4	1,376.0	2,211.1	0.67	-0.53	0.42
8,489.0	91.10	181.20	6,081.3	-1,403.3	-1,987.4	1,374.0	2,302.3	0.31	0.31	0.00
8,585.0	91.40	181.80	6,079.2	-1,401.2	-2,083.3	1,371.5	2,393.3	0.70	0.31	0.62
8,680.0	90.10	181.40	6,078.0	-1,400.0	-2,178.2	1,368.9	2,483.3	1.43	-1.37	-0.42
8,776.0	88.90	180.30	6,078.8	-1,400.8	-2,274.2	1,367.4	2,574.7	1.70	-1.25	-1.15
8,871.0	88.20	179.20	6,081.2	-1,403.2	-2,369.2	1,367.9	2,665.6	1.37	-0.74	-1.16
8,967.0	87.50	178.10	6,084.8	-1,406.8	-2,465.1	1,370.1	2,758.0	1.36	-0.73	-1.15
9,063.0	88.30	179.00	6,088.3	-1,410.3	-2,561.0	1,372.5	2,850.4	1.25	0.83	0.94
9,158.0	88.70	179.20	6,090.8	-1,412.8	-2,656.0	1,374.0	2,941.7	0.47	0.42	0.21
9,253.0	89.40	178.90	6,092.4	-1,414.4	-2,750.9	1,375.6	3,032.9	0.80	0.74	-0.32
9,349.0	88.90	178.20	6,093.8	-1,415.8	-2,846.9	1,378.0	3,125.4	0.90	-0.52	-0.73
9,443.0	91.20	180.10	6,093.7	-1,415.7	-2,940.9	1,379.4	3,215.7	3.17	2.45	2.02
9,538.0	91.20	181.80	6,091.7	-1,413.7	-3,035.8	1,377.9	3,306.0	1.79	0.00	1.79
9,633.0	90.40	183.10	6,090.4	-1,412.4	-3,130.7	1,373.8	3,395.6	1.61	-0.84	1.37
9,728.0	89.40	181.80	6,090.6	-1,412.6	-3,225.6	1,369.7	3,485.2	1.73	-1.05	-1.37
9,825.0	89.80	182.10	6,091.3	-1,413.3	-3,322.6	1,366.4	3,576.9	0.52	0.41	0.31

Survey Report



Company:	BONANZA CREEK ENERGY INC.	Local Co-ordinate Reference:	Well PRONGHORN K-O-22HNB
Project:	WELD COUNTY, COLORADO (NAD 83)	TVD Reference:	KB-EST @ 4678.0usft (Original Well Elev)
Site:	NW NW SEC. 22 T5N R61W 6th P.M.	MD Reference:	KB-EST @ 4678.0usft (Original Well Elev)
Well:	PRONGHORN K-O-22HNB	North Reference:	True
Wellbore:	JOB # 2009-446	Survey Calculation Method:	Minimum Curvature
Design:	FINAL SURVEYS	Database:	EDM 5000.1 Single User Db

Survey										
Measured Depth (usft)	Inclination (°)	Azimuth (°)	Vertical Depth (usft)	Subsea Depth (usft)	+N/-S (usft)	+E/-W (usft)	Vertical Section (usft)	Dogleg Rate (°/100usft)	Build Rate (°/100usft)	Turn Rate (°/100usft)
9,921.0	89.80	181.10	6,091.6	-1,413.6	-3,418.5	1,363.8	3,667.9	1.04	0.00	-1.04
10,017.0	89.60	180.60	6,092.1	-1,414.1	-3,514.5	1,362.3	3,759.3	0.56	-0.21	-0.52
10,113.0	89.90	180.40	6,092.5	-1,414.5	-3,610.5	1,361.5	3,850.8	0.38	0.31	-0.21
10,208.0	90.10	180.20	6,092.5	-1,414.5	-3,705.5	1,361.0	3,941.5	0.30	0.21	-0.21
10,303.0	90.20	179.40	6,092.3	-1,414.3	-3,800.5	1,361.3	4,032.5	0.85	0.11	-0.84
10,399.0	89.90	179.30	6,092.2	-1,414.2	-3,896.5	1,362.4	4,124.6	0.33	-0.31	-0.10
10,494.0	90.40	179.60	6,091.9	-1,413.9	-3,991.5	1,363.3	4,215.7	0.61	0.53	0.32
10,589.0	90.40	178.90	6,091.3	-1,413.3	-4,086.5	1,364.6	4,306.9	0.74	0.00	-0.74
10,685.0	90.80	181.20	6,090.3	-1,412.3	-4,182.5	1,364.5	4,398.7	2.43	0.42	2.40
10,780.0	91.20	181.50	6,088.6	-1,410.6	-4,277.5	1,362.2	4,488.8	0.53	0.42	0.32
10,875.0	90.20	182.00	6,087.5	-1,409.5	-4,372.4	1,359.3	4,578.8	1.18	-1.05	0.53
LAST SURVEY - FEB 3, 2015										
10,887.0	90.20	182.00	6,087.4	-1,409.4	-4,384.4	1,358.9	4,590.1	0.00	0.00	0.00
EXTRAPOLATION TO TD										
10,939.9	90.20	182.00	6,087.2	-1,409.2	-4,437.3	1,357.1	4,640.1	0.00	0.00	0.00