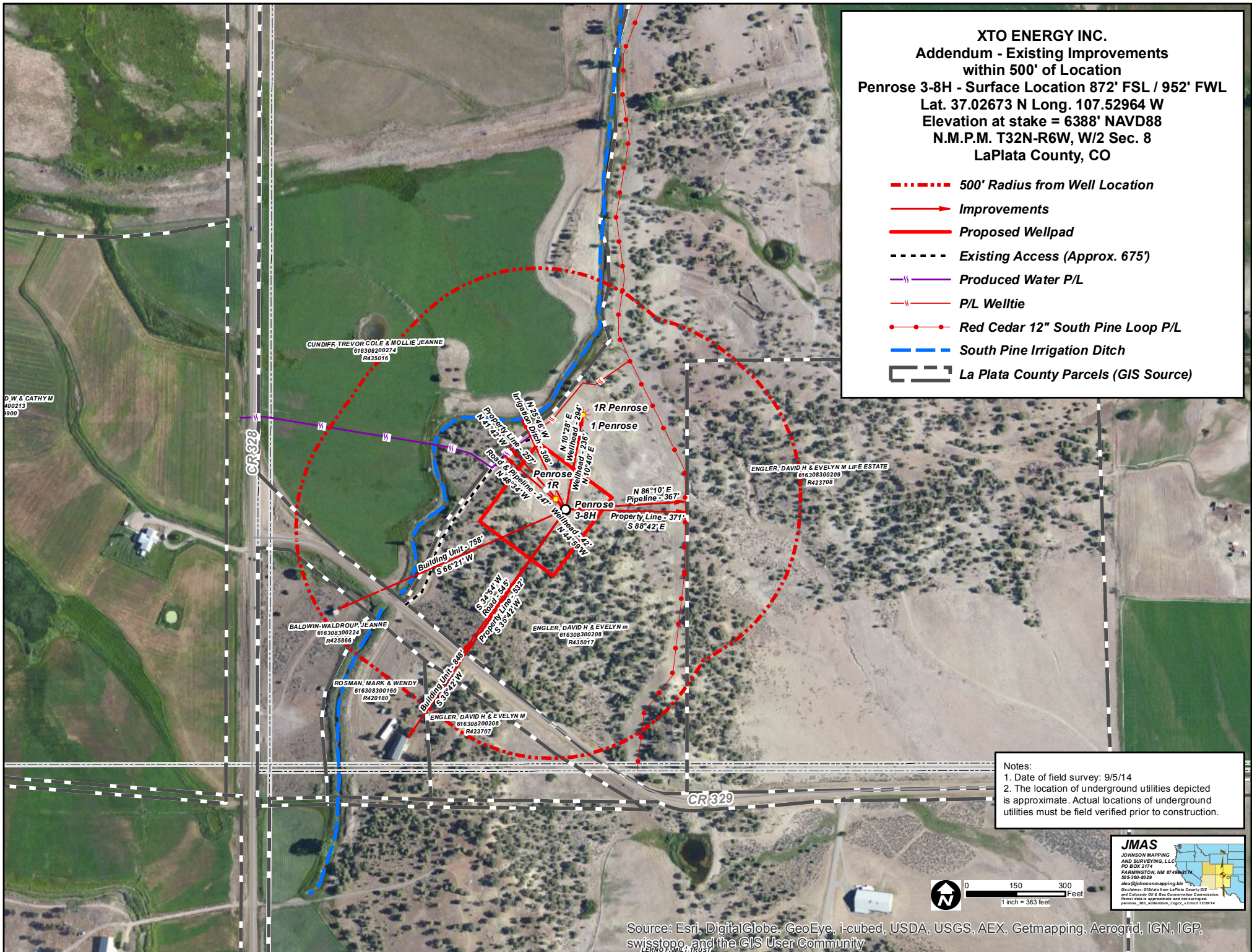
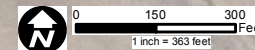
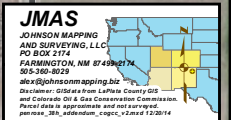


XTO ENERGY INC.
Addendum - Existing Improvements
within 500' of Location
Penrose 3-8H - Surface Location 872' FSL / 952' FWL
Lat. 37.02673 N Long. 107.52964 W
Elevation at stake = 6388' NAVD88
N.M.P.M. T32N-R6W, W/2 Sec. 8
LaPlata County, CO

- - - - - 500' Radius from Well Location
- Improvements
- Proposed Wellpad
- - - - - Existing Access (Approx. 675')
- Produced Water P/L
- P/L Welltie
- Red Cedar 12" South Pine Loop P/L
- South Pine Irrigation Ditch
- [] La Plata County Parcels (GIS Source)



Notes:
 1. Date of field survey: 9/5/14
 2. The location of underground utilities depicted is approximate. Actual locations of underground utilities must be field verified prior to construction.



Source: Esri, DigitalGlobe, GeoEye, i-cubed, USDA, USGS, AEX, Getmapping, Aerogrid, IGN, IGP, swisstopo, and the GIS User Community