

2014-07-15 11:20

Tension (lbF)

FEET

1:240

3' AMPLITUDE (mV)

FREE PIPE TIME (μs)

0.00 500.00

0.0 100.0 200.0 1200.0

200.00 1200.00

COLLAR LOCATOR

AMPLITUDE X 5 (mV)

5' VARIABLE DENSITY (μs)

0.0 10.0

0.0 20.0

200.00 1200.00

GAMMA RAY

3' TRAVEL TIME (μs)

0.0 150.0

800.0 150.0

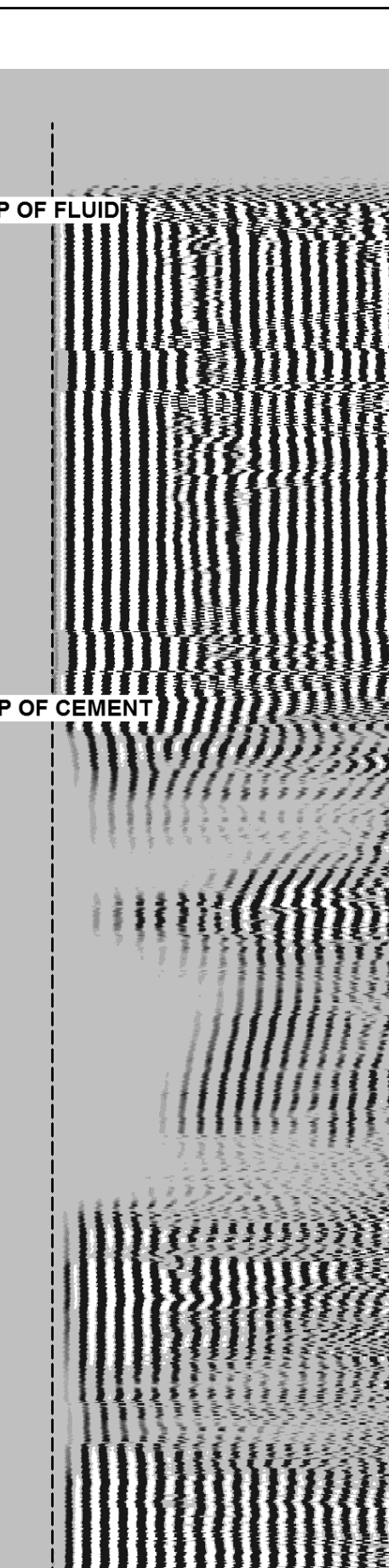
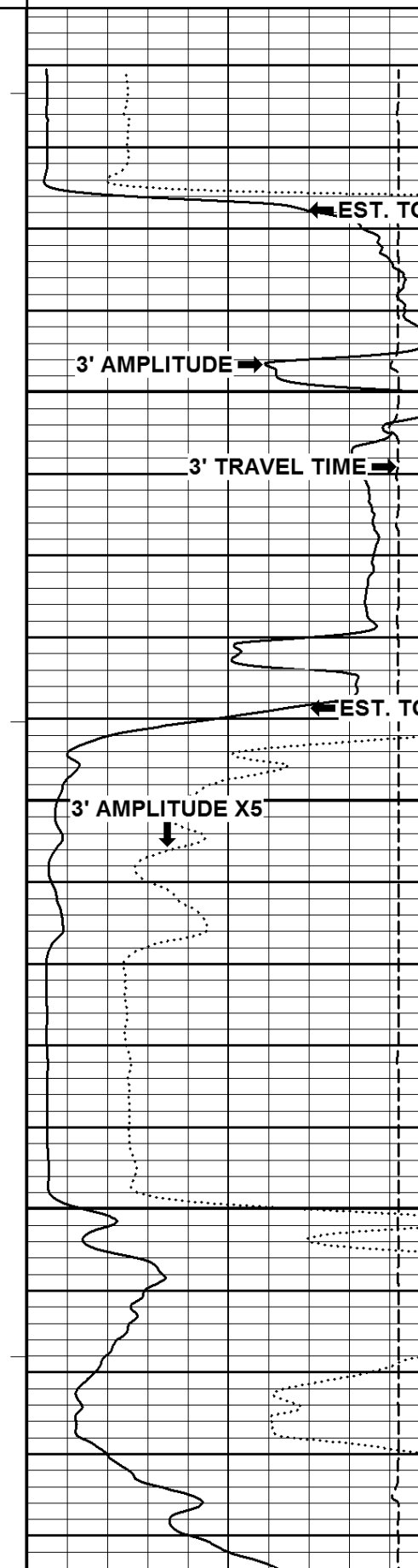
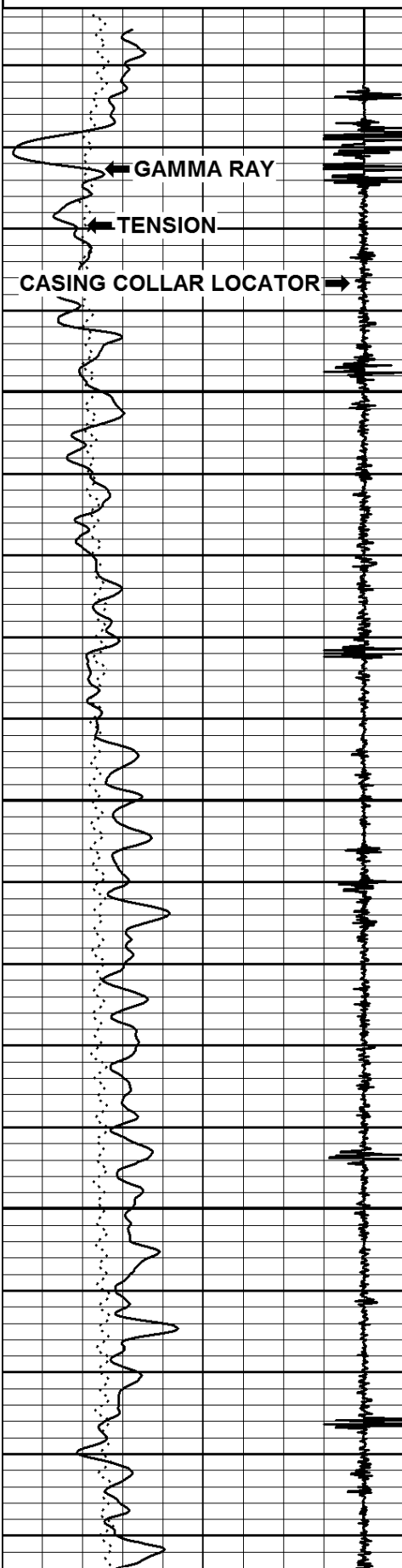
Pass No. 204

Logging Up
Shutin

File FINAL.pre

3.12

130503



← GAMMA RAY
← TENSION
CASING COLLAR LOCATOR →

50

3' AMPLITUDE →

3' TRAVEL TIME →

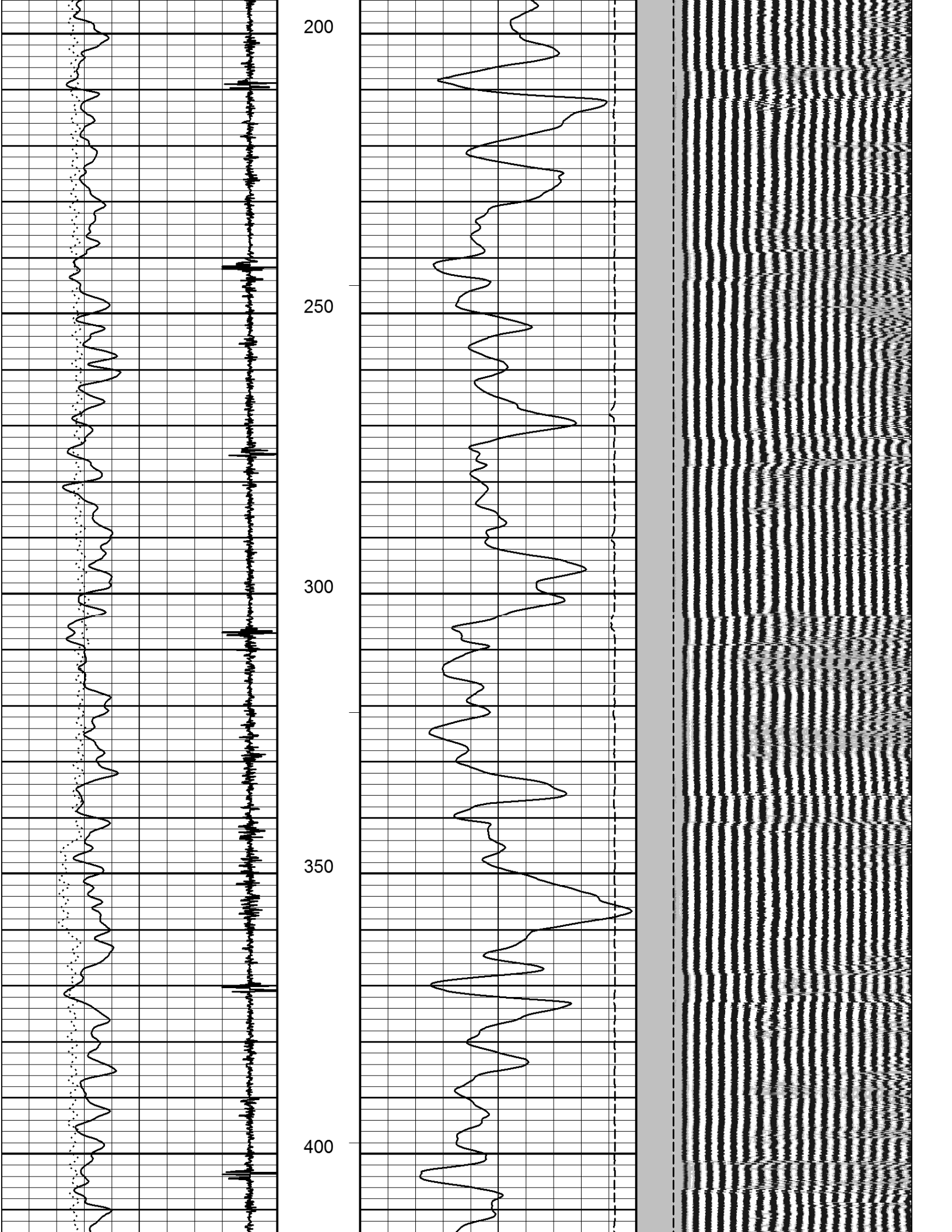
100

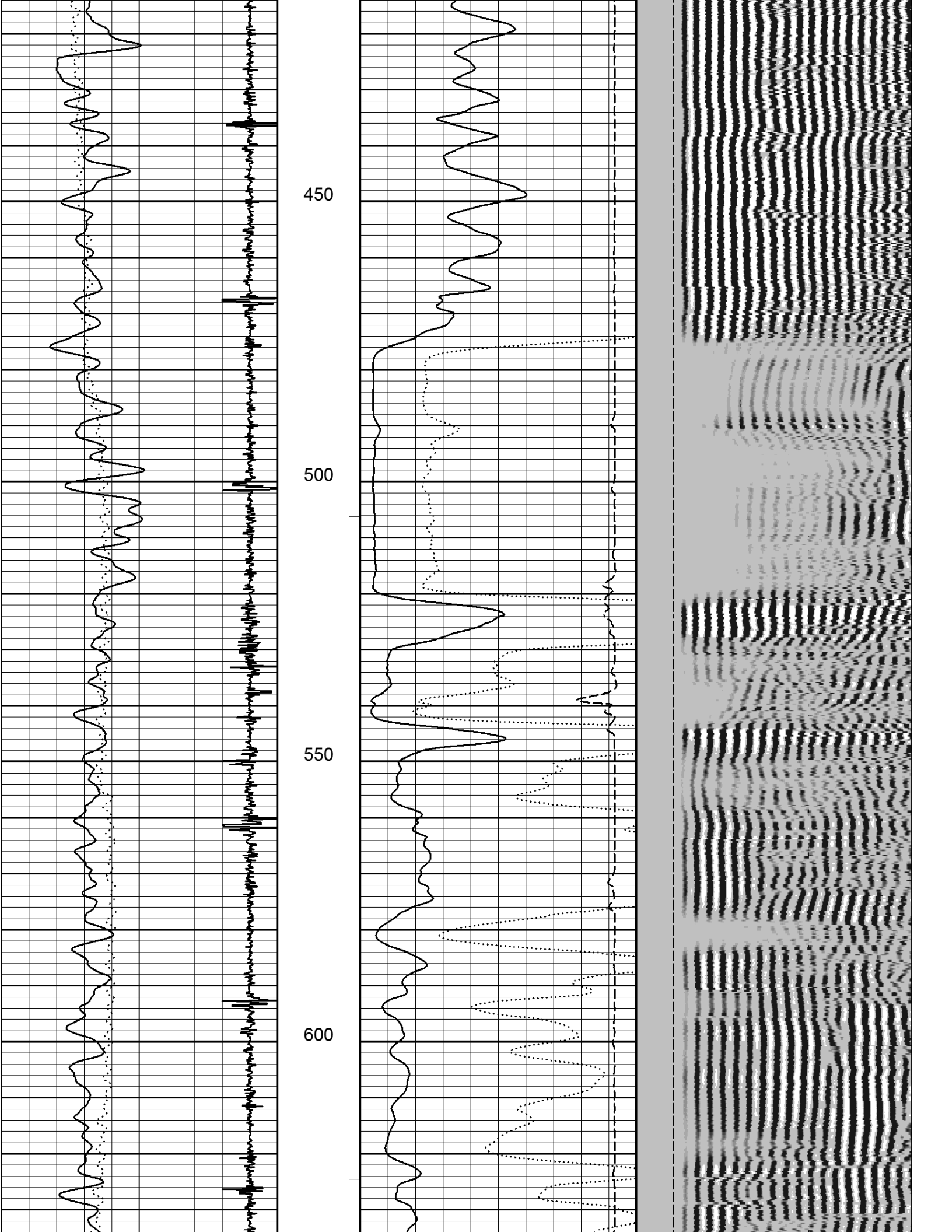
3' AMPLITUDE X5
↓

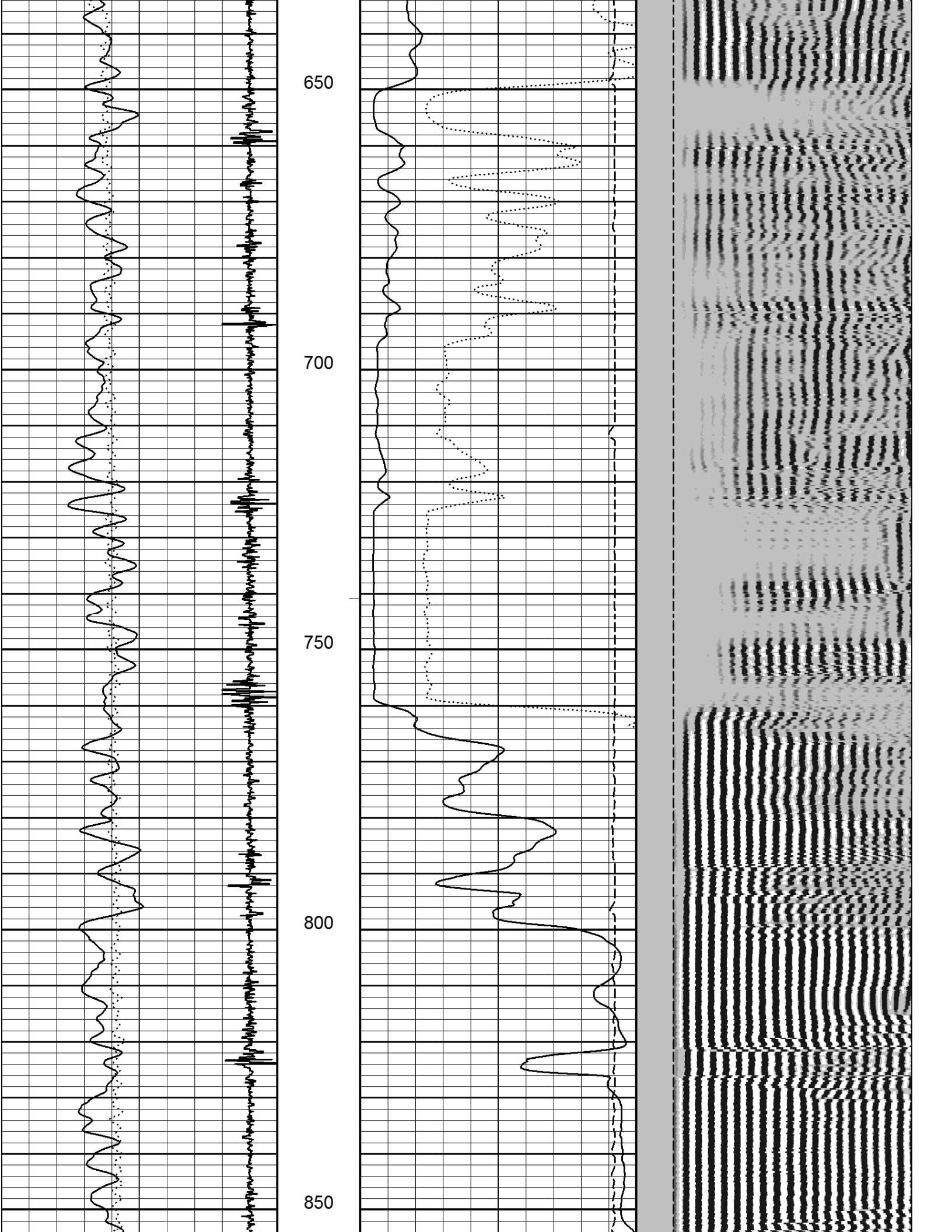
150

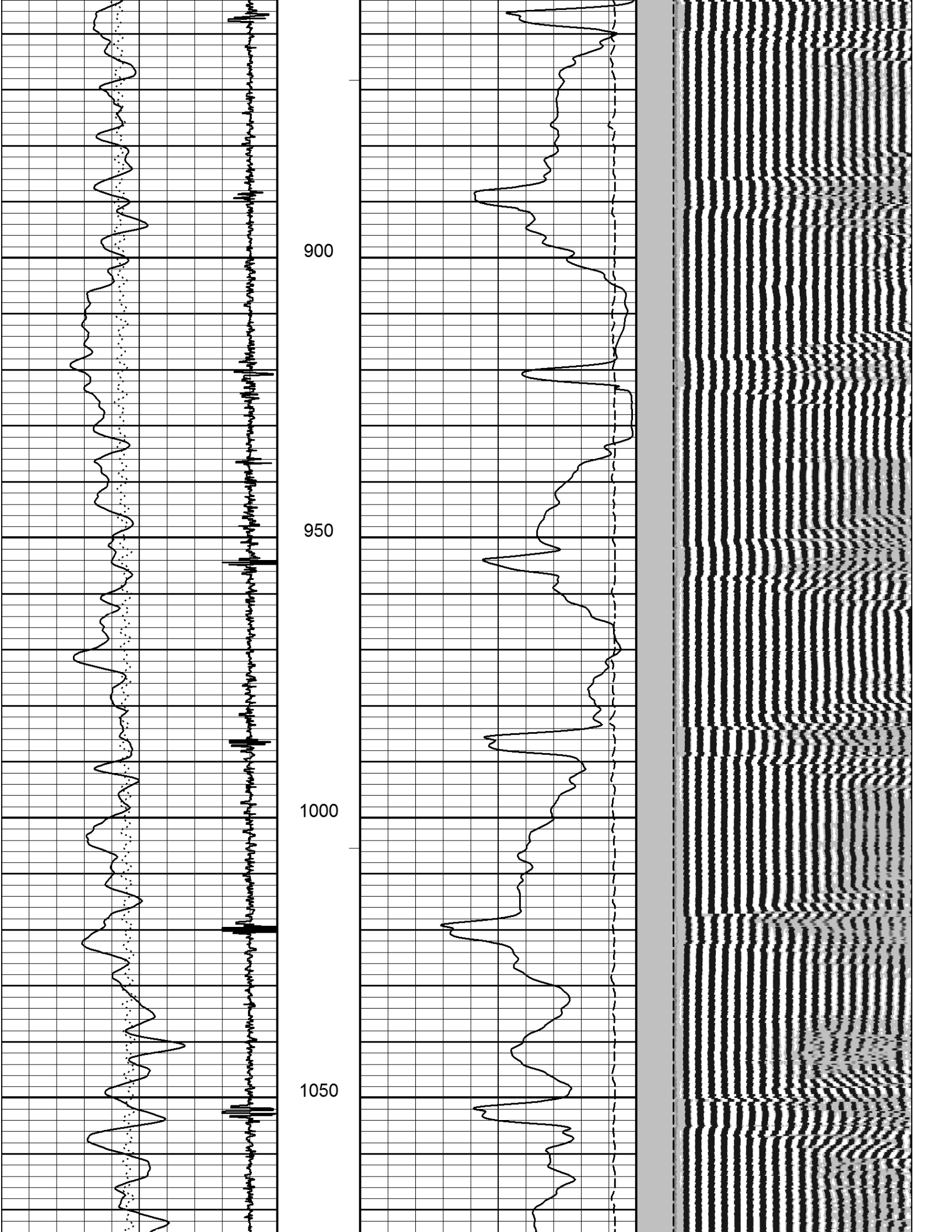
← EST. TOP OF FLUID

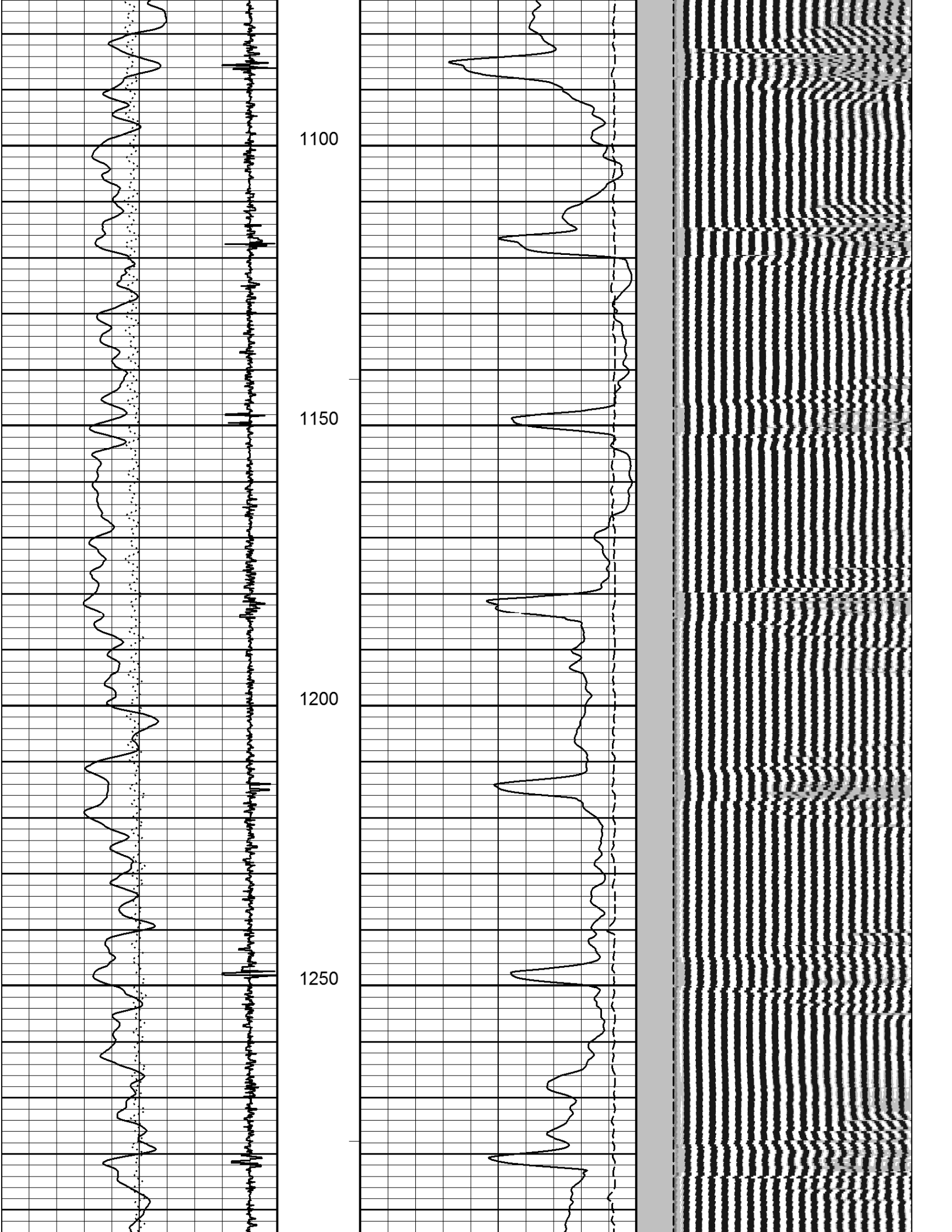
← EST. TOP OF CEMENT

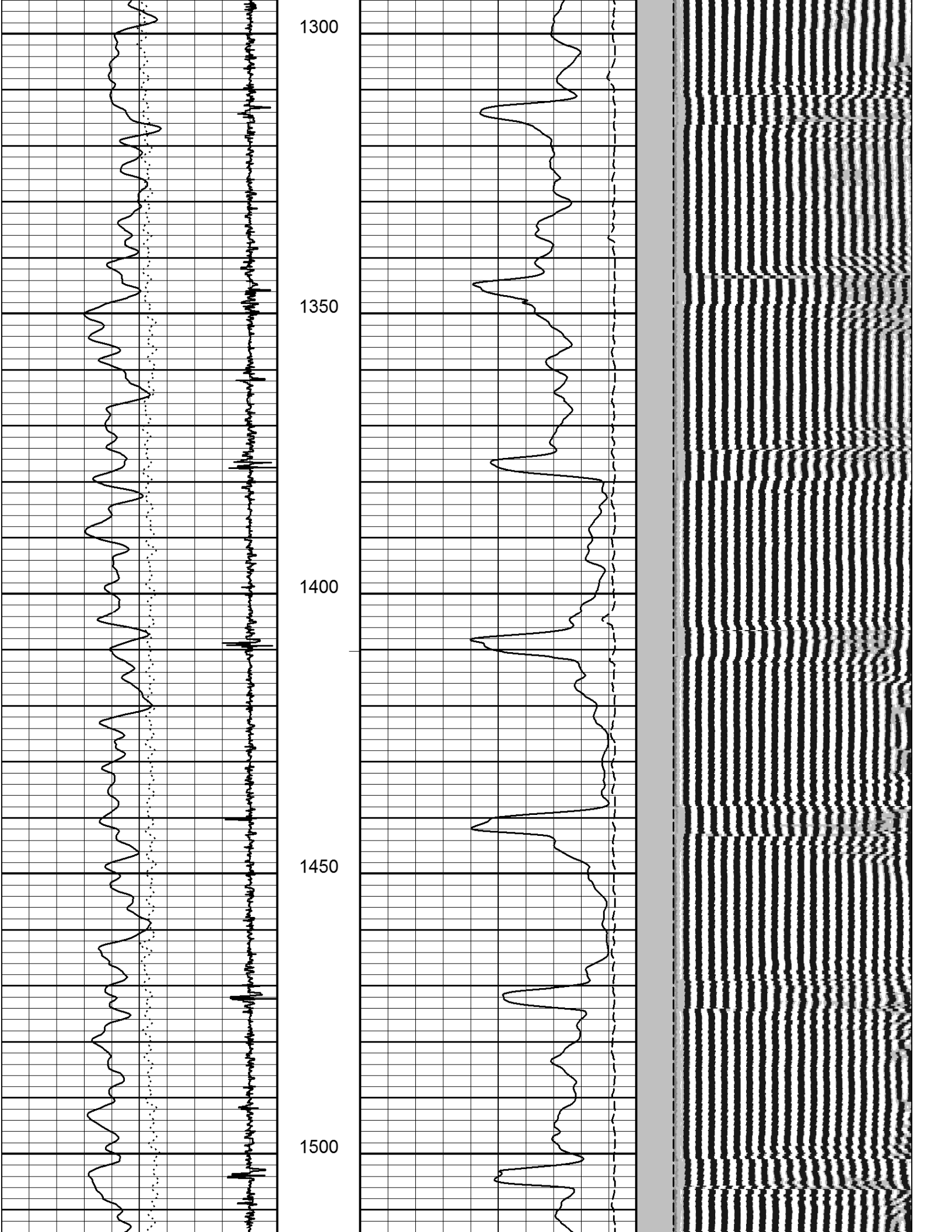


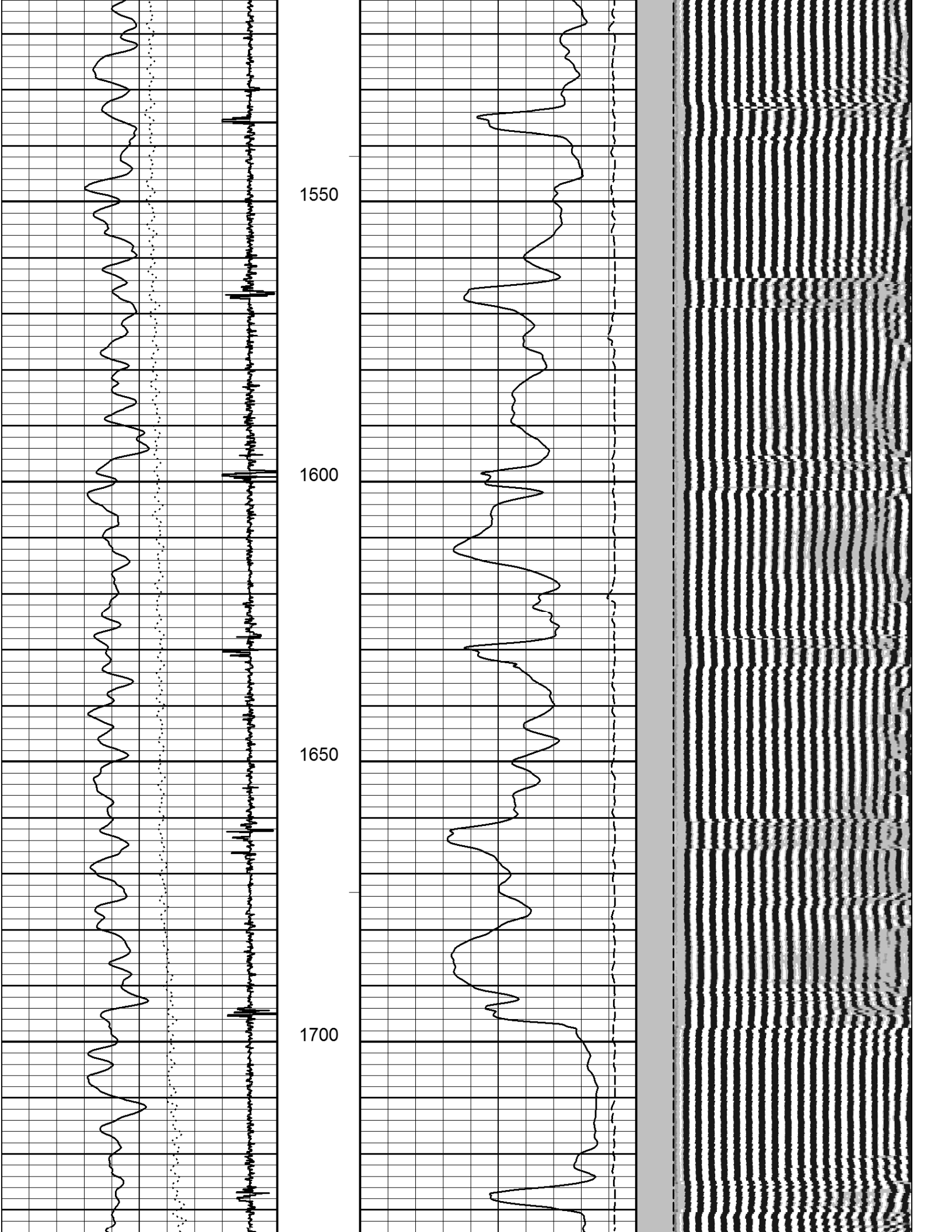


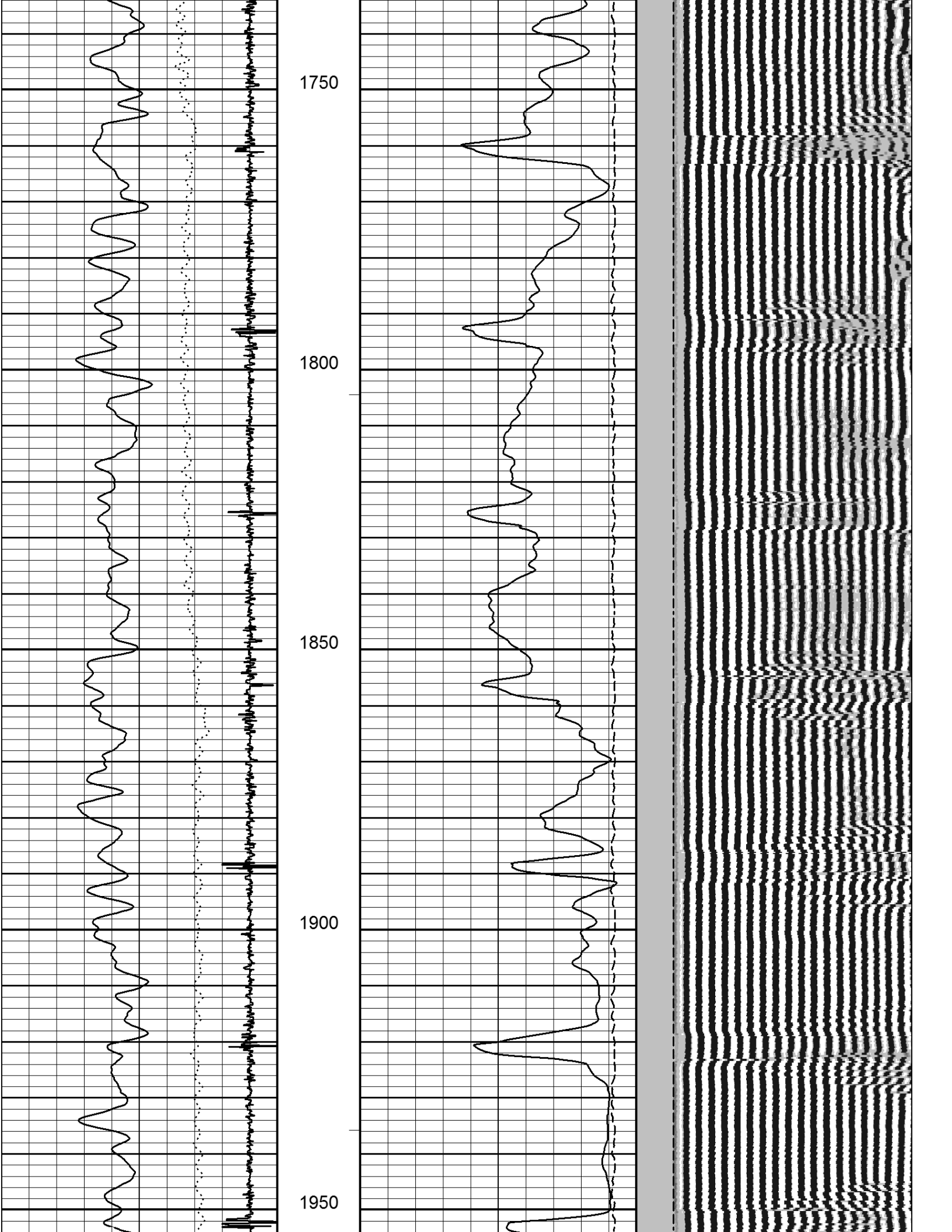


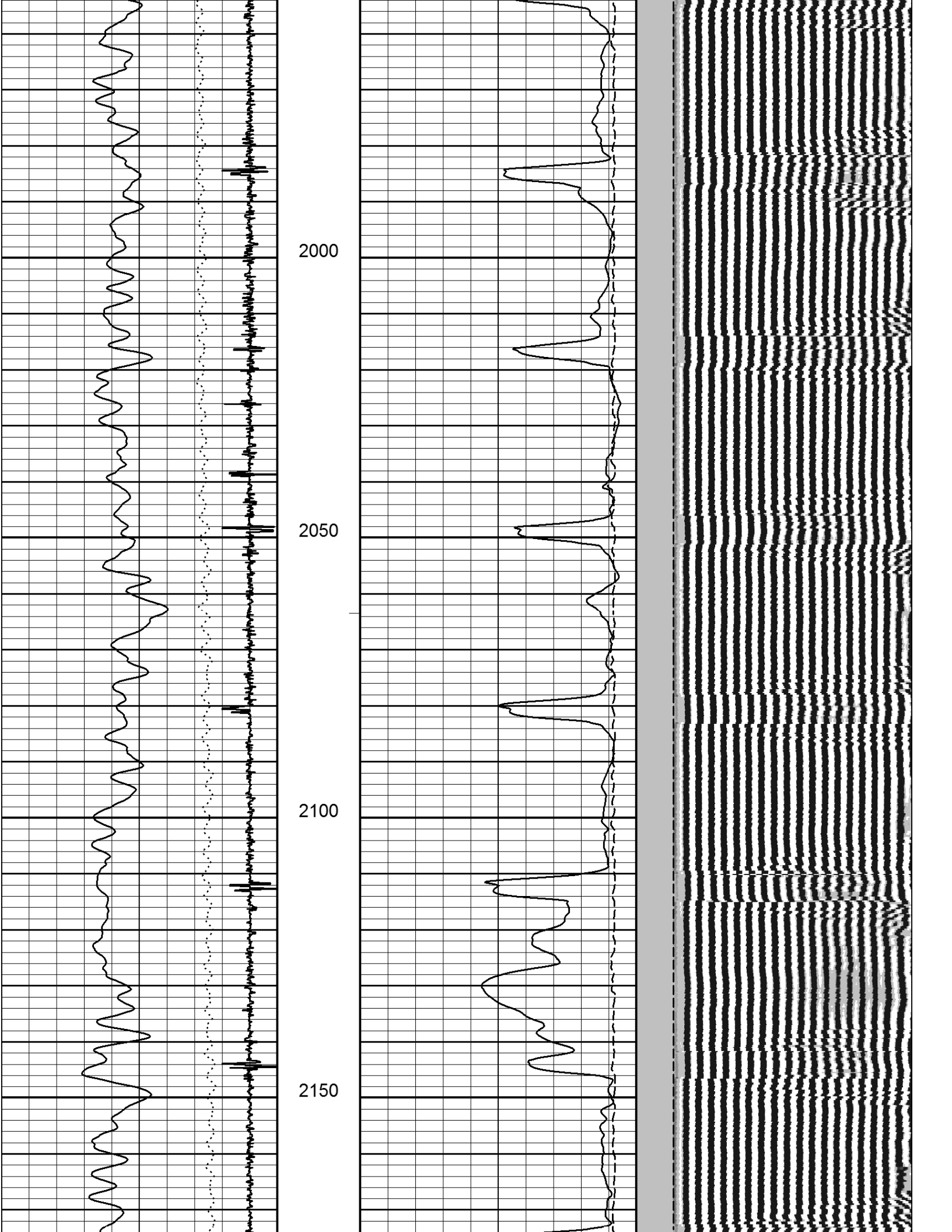


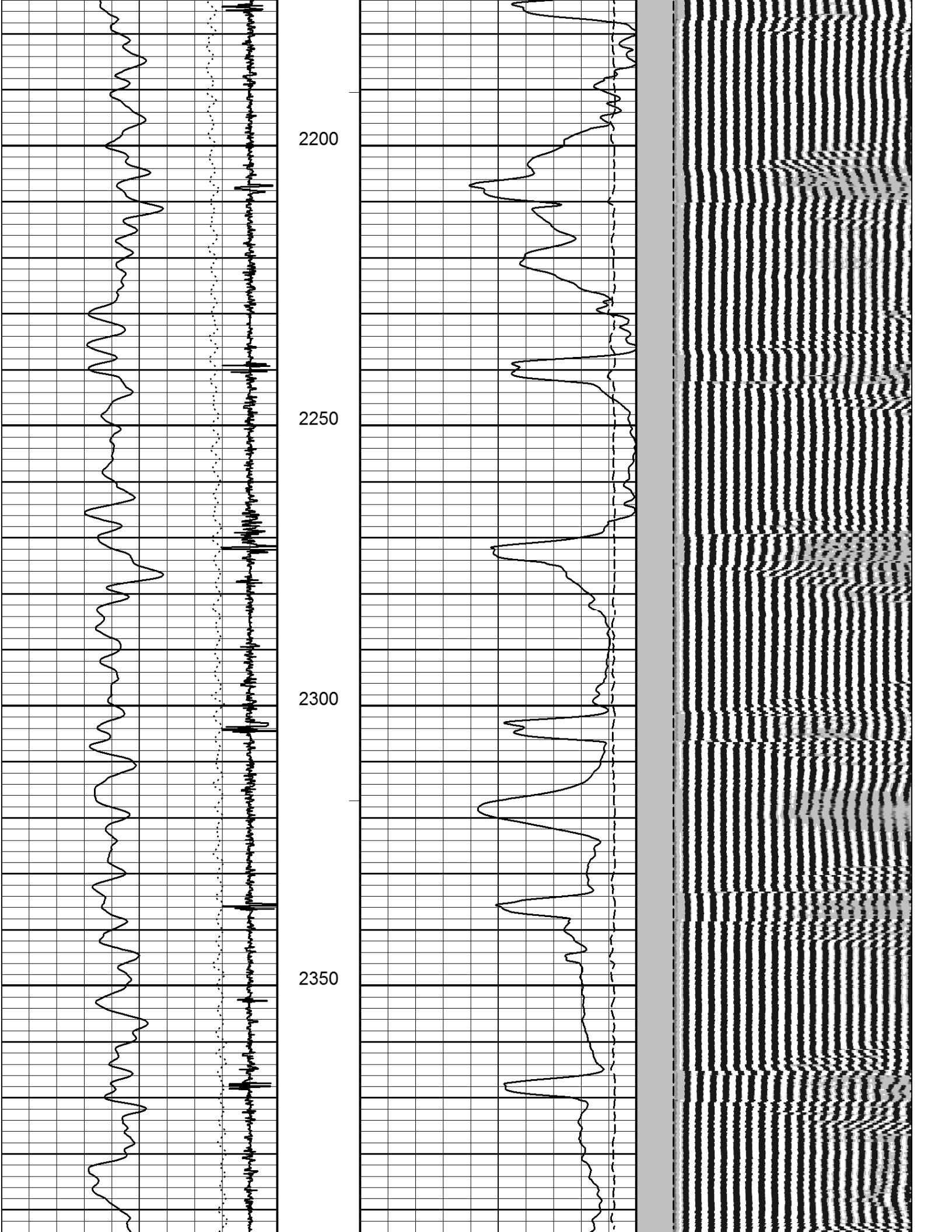


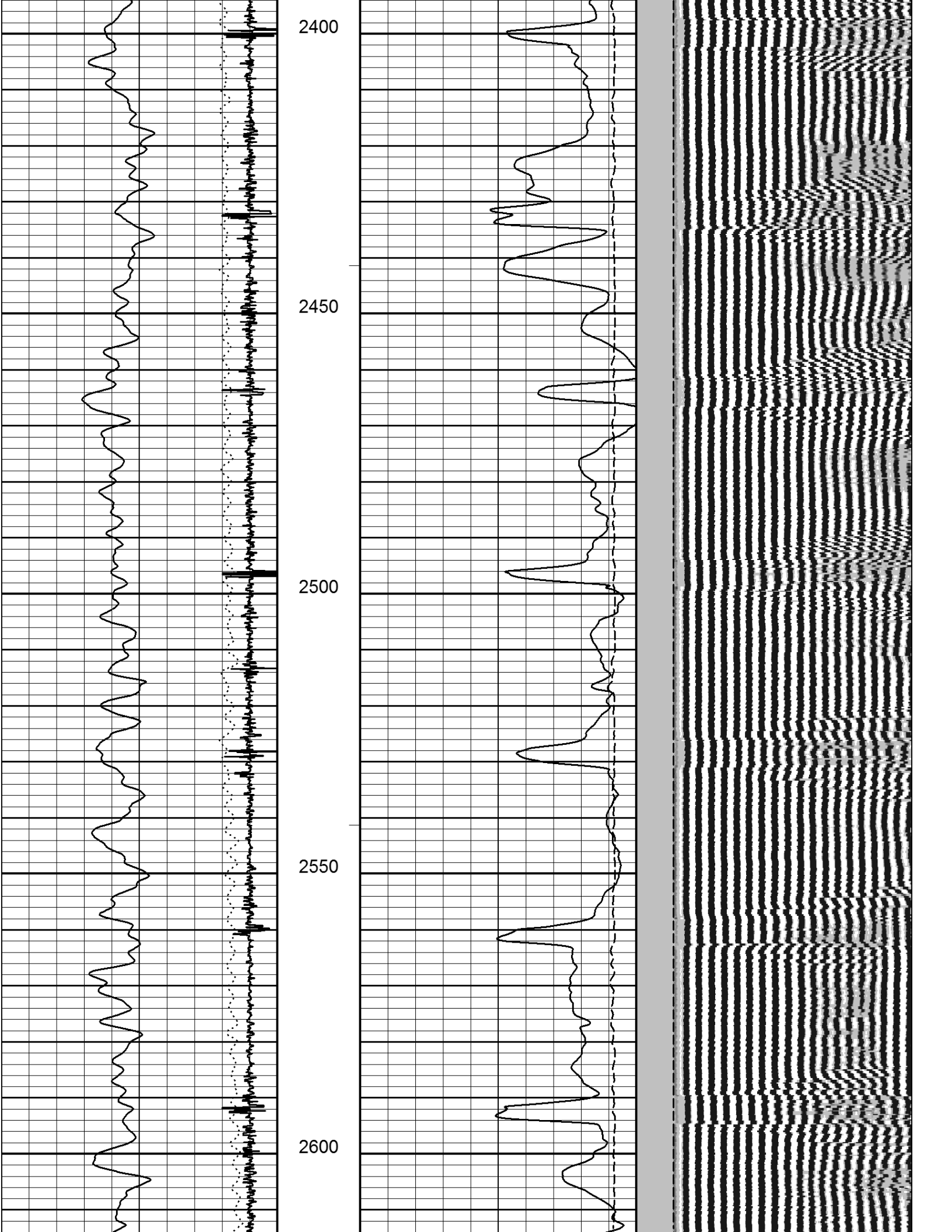


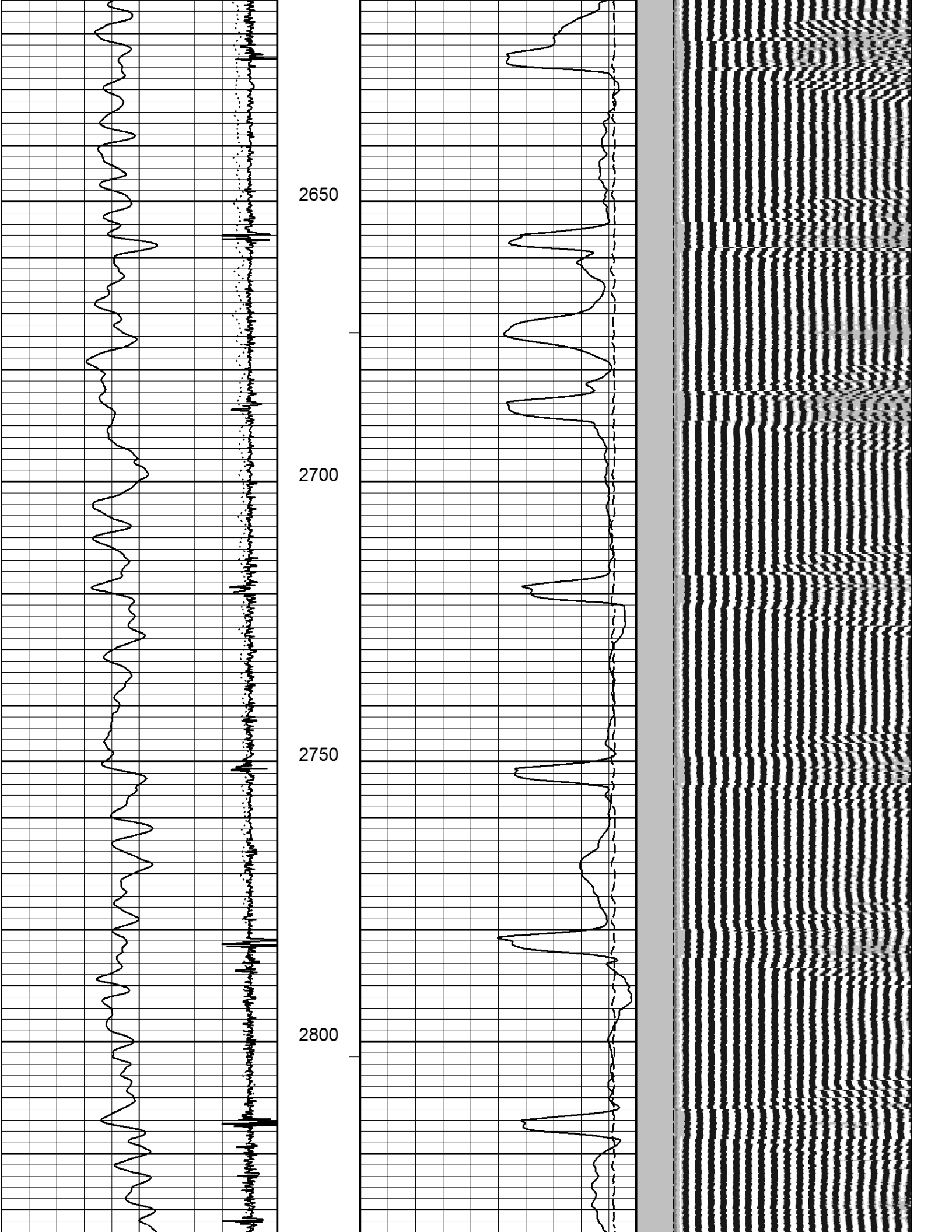


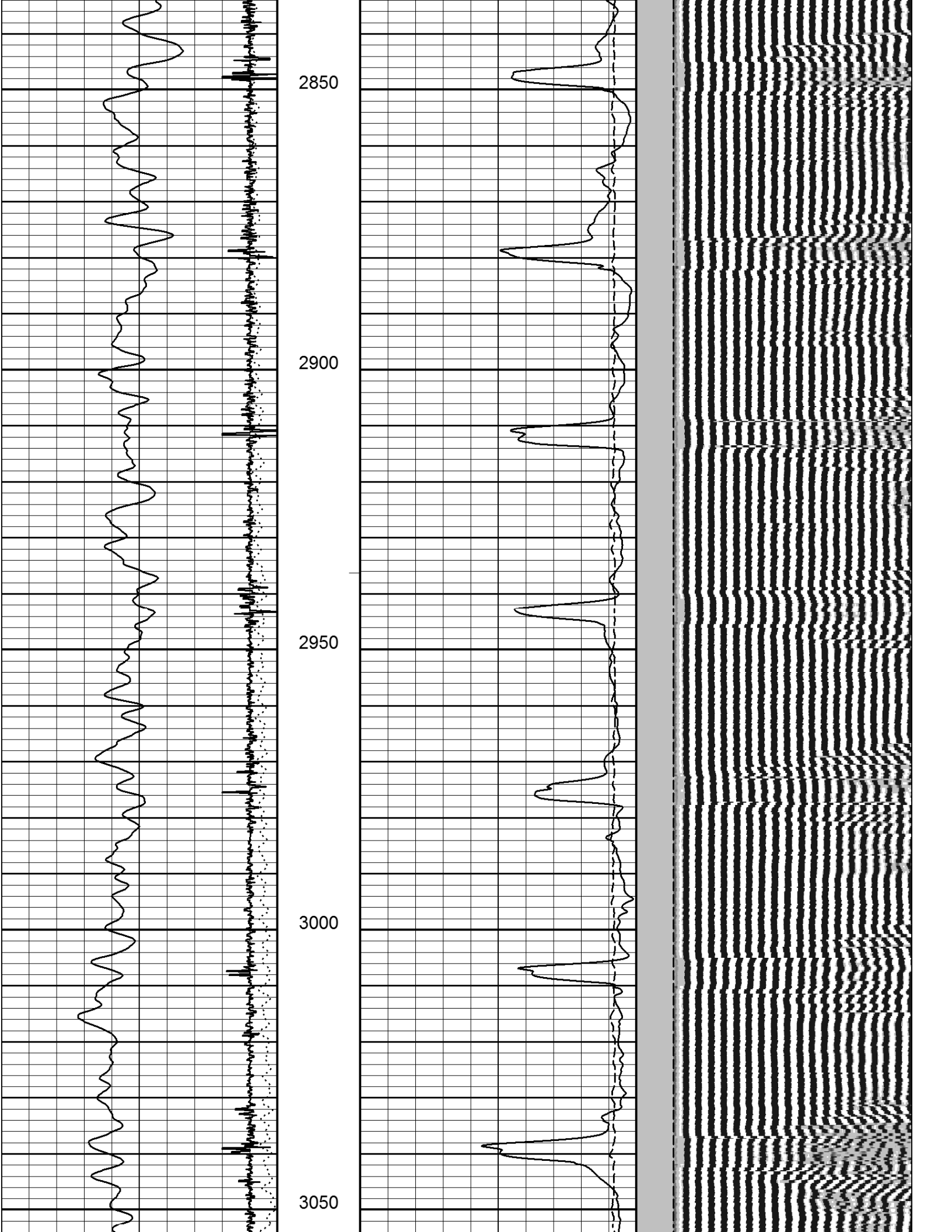


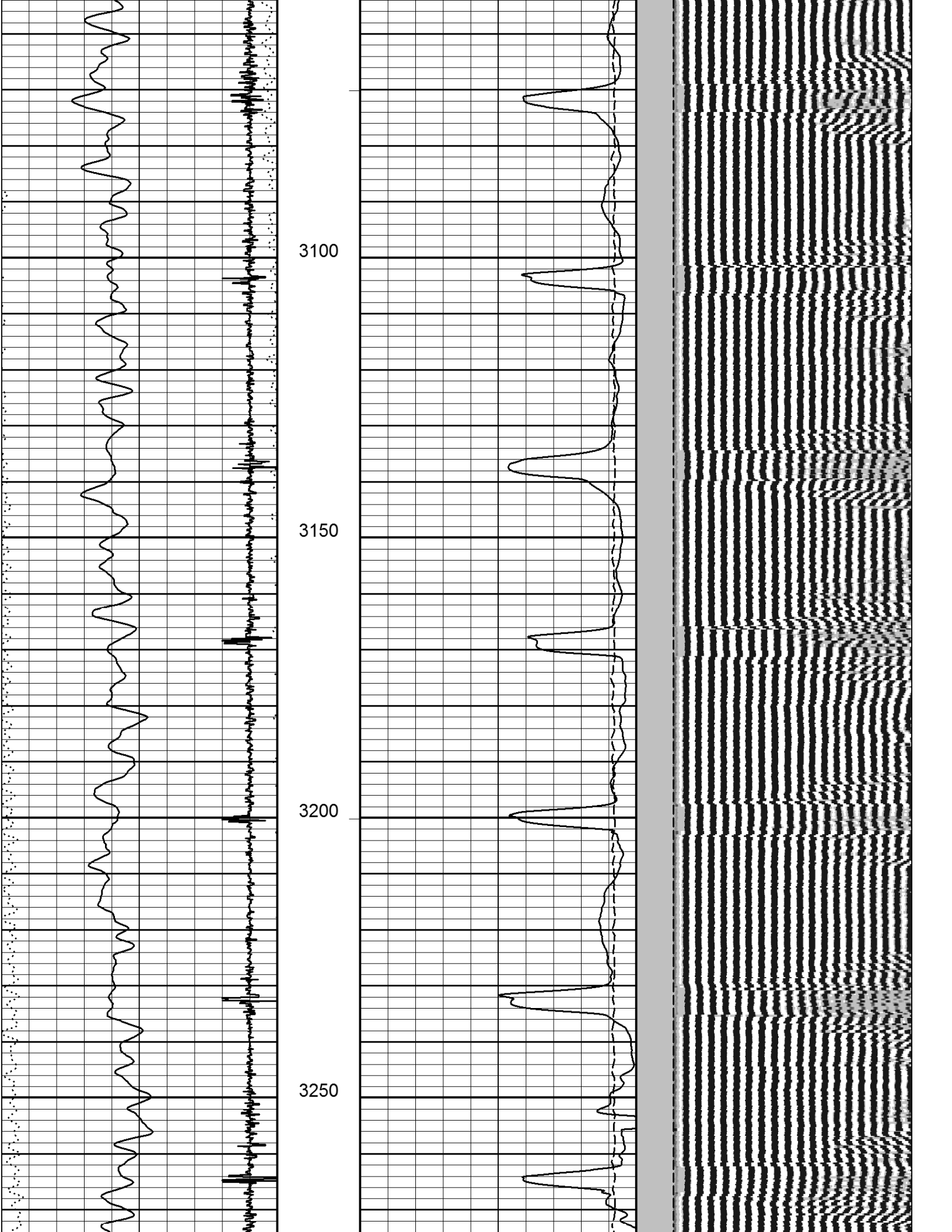


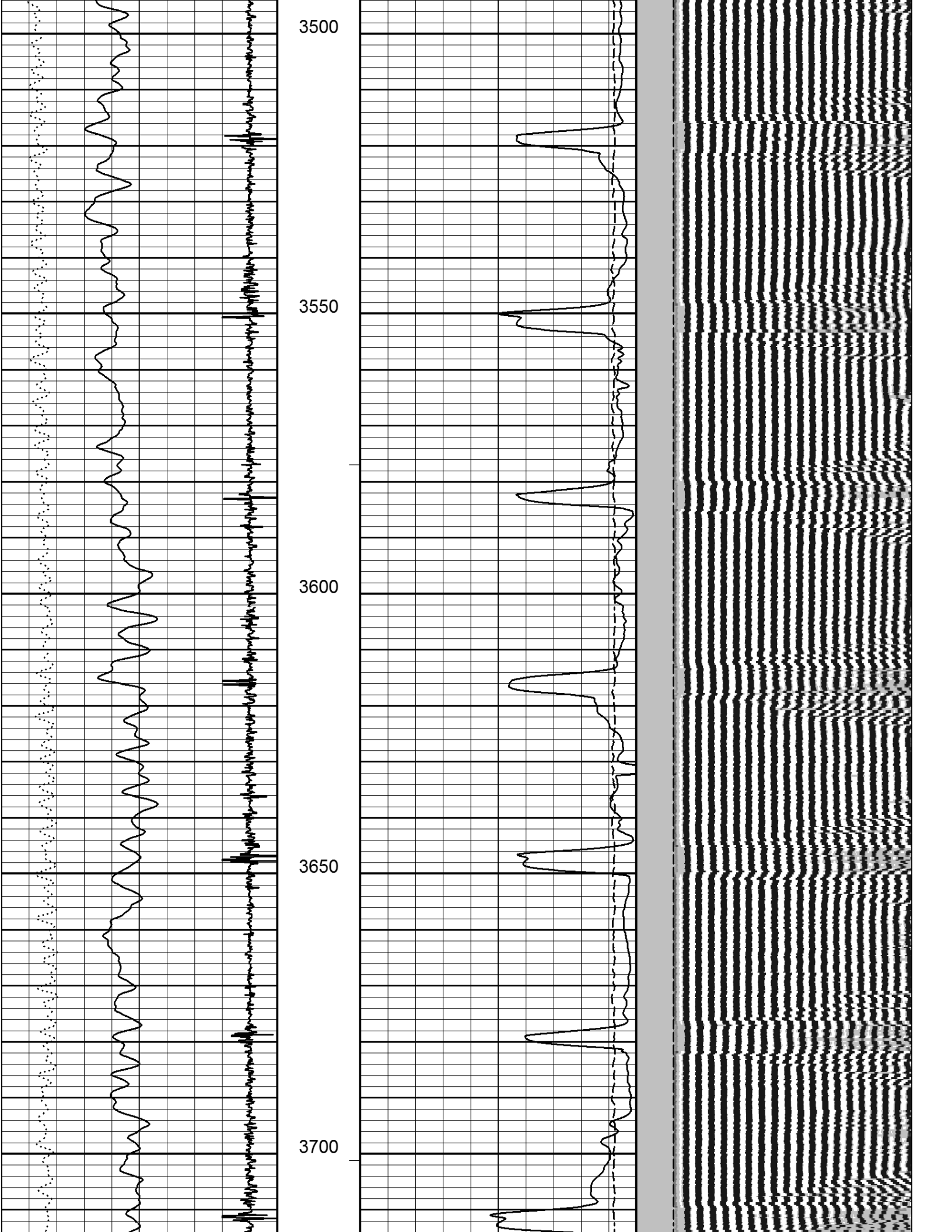


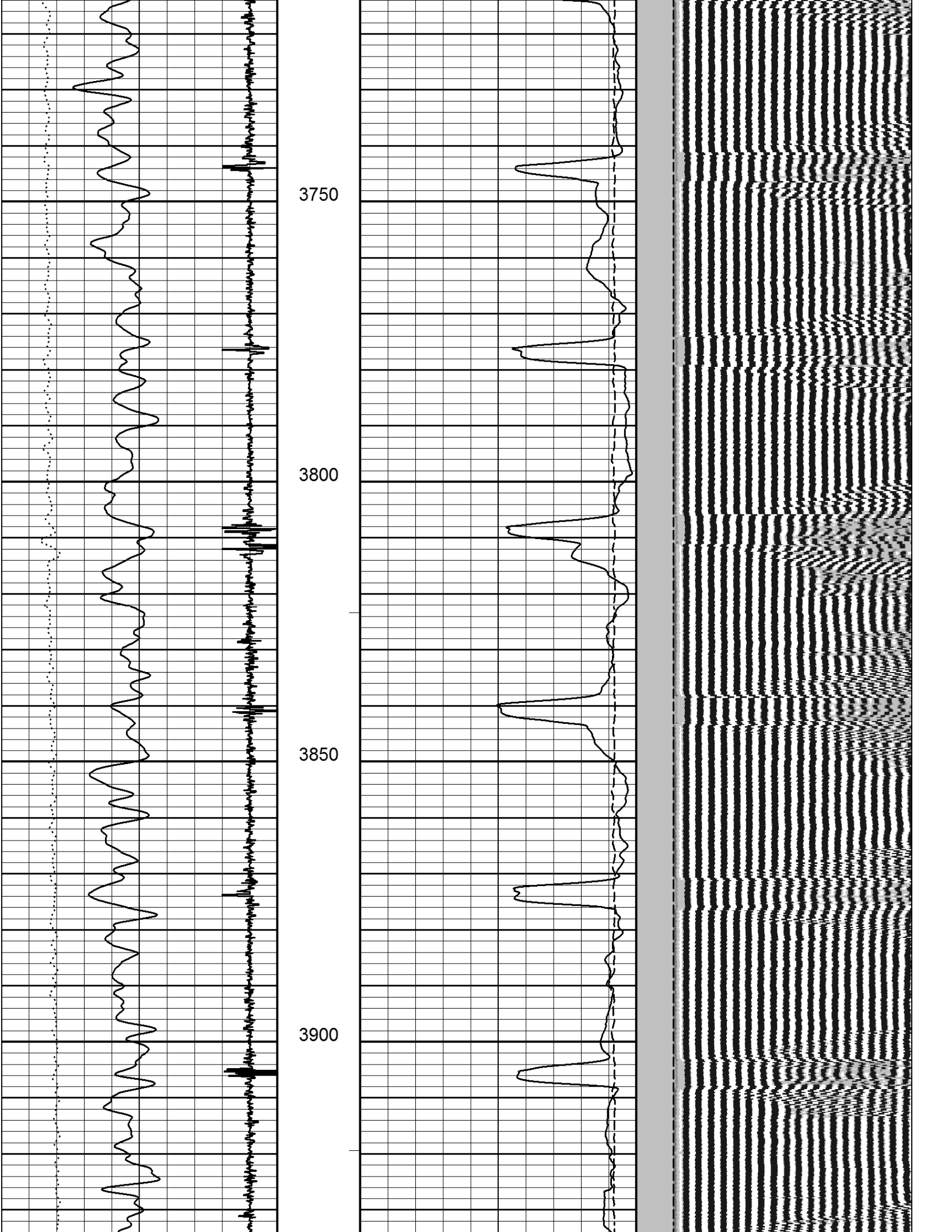


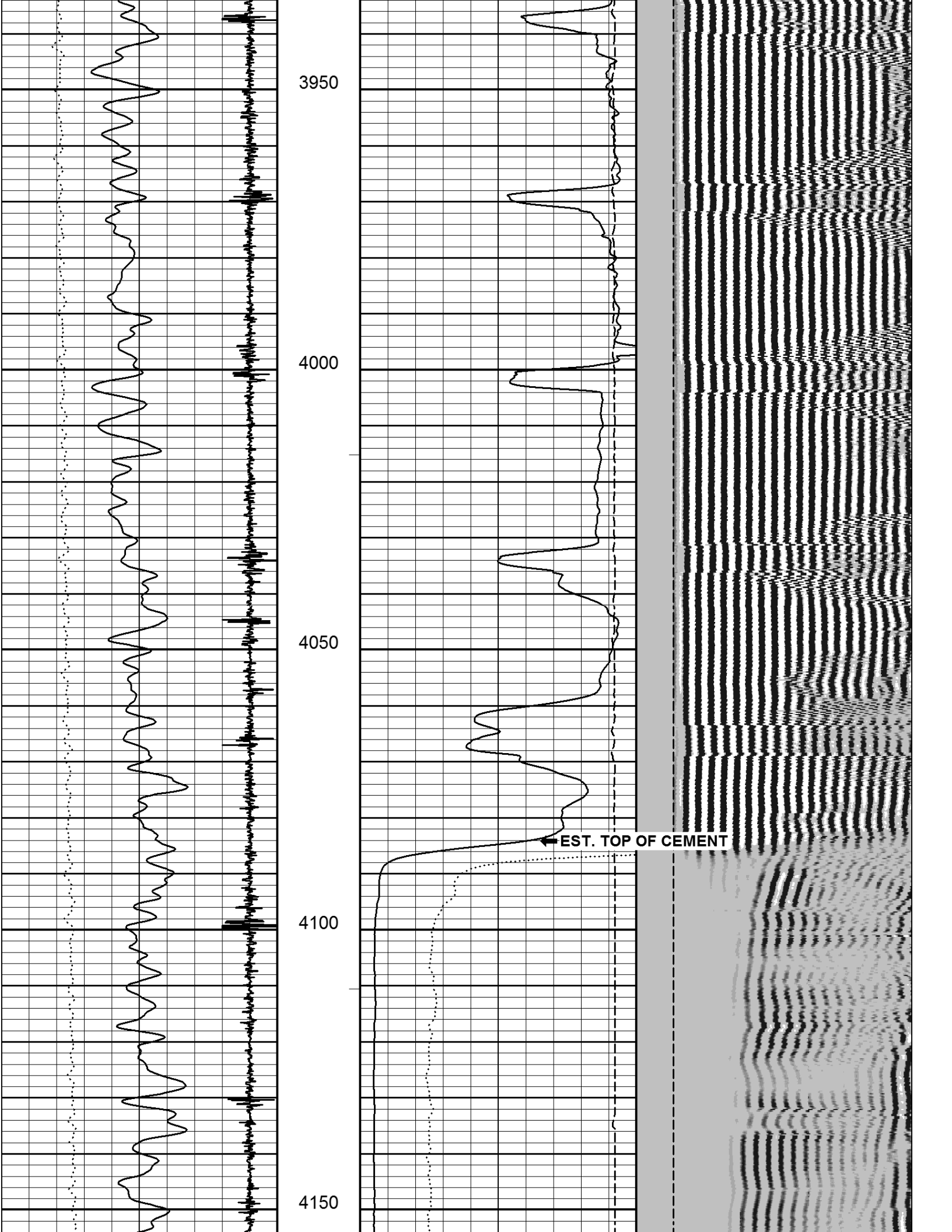


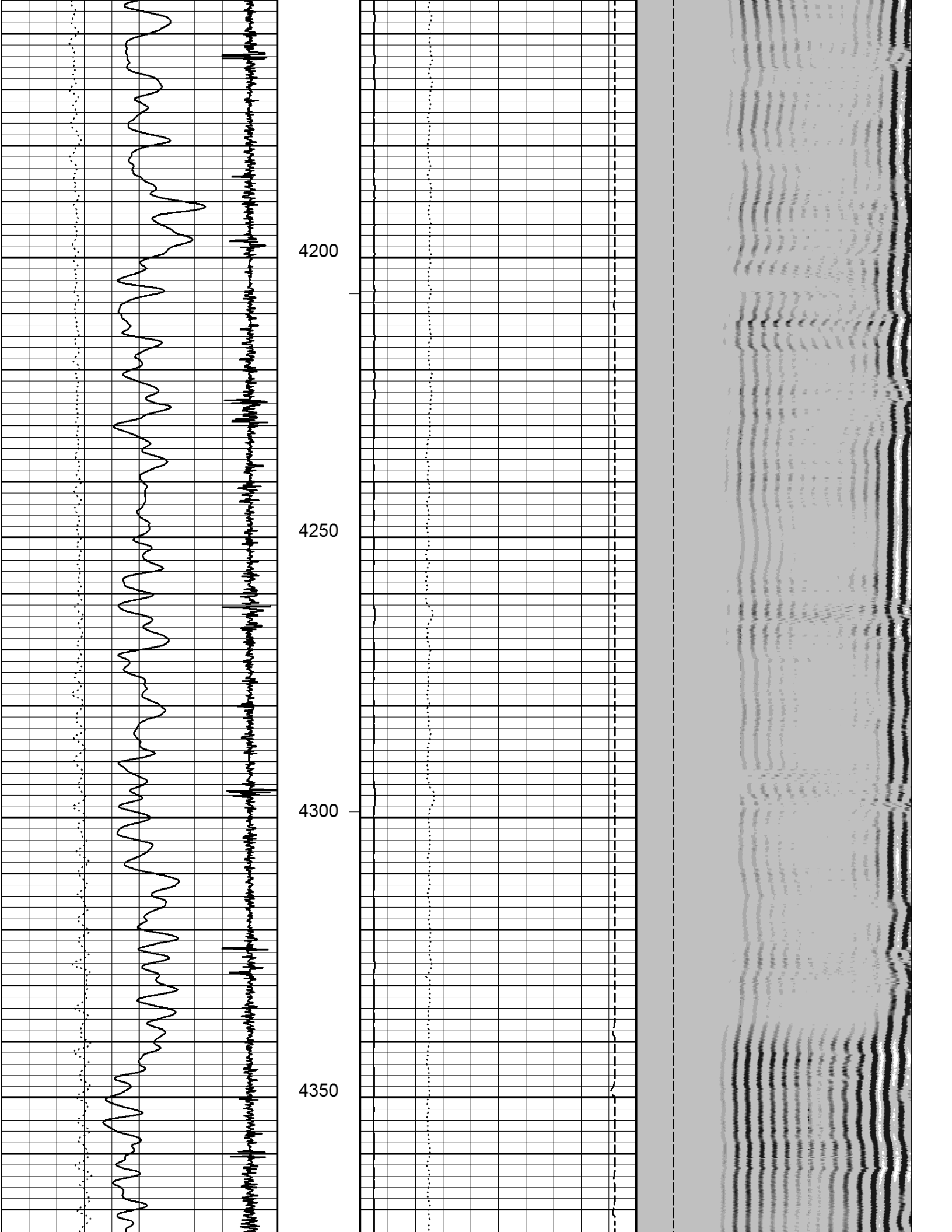


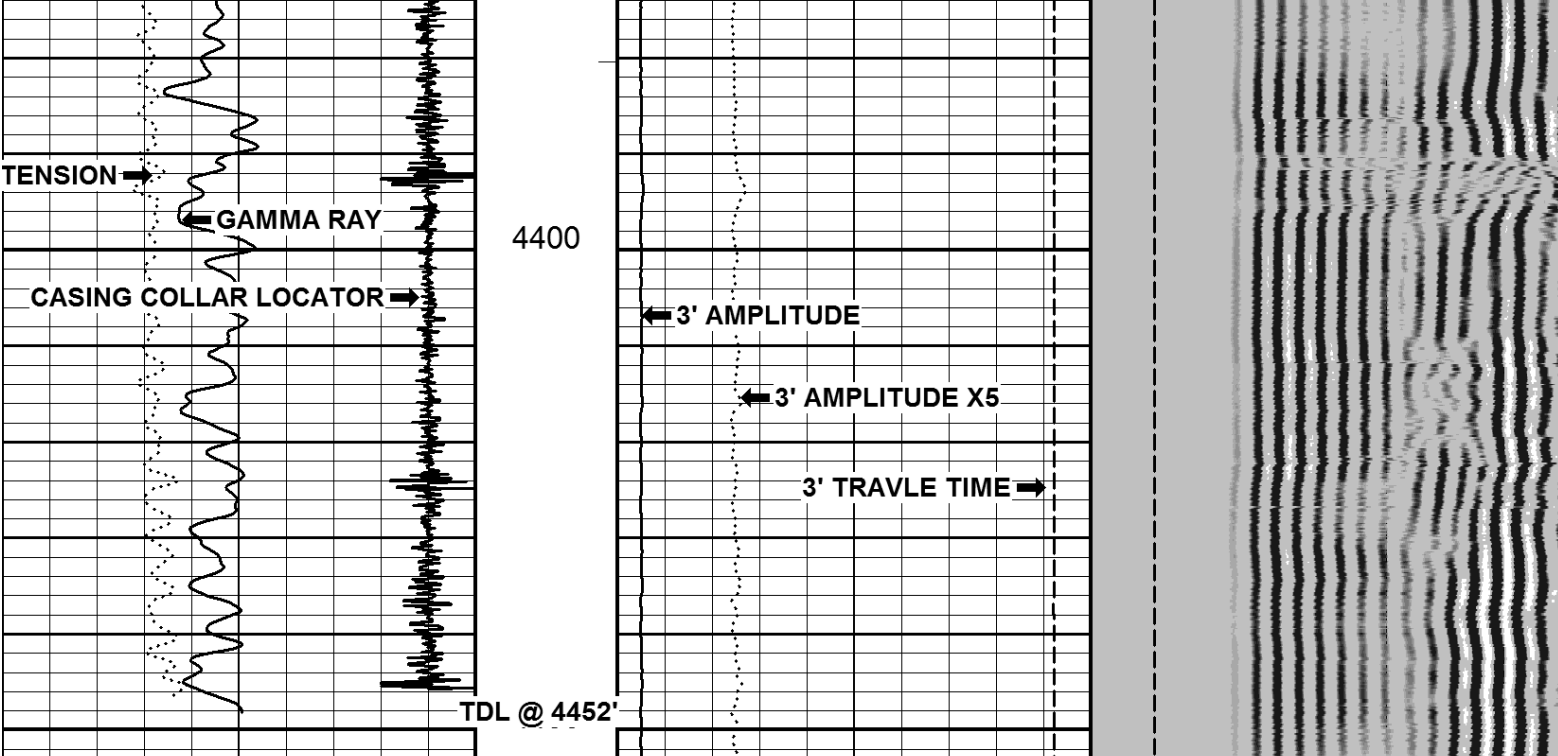












2014-07-15 11:20	
Tension (lbF)	
0.00	500.00
COLLAR LOCATOR	
0.0	10.0
GAMMA RAY	
0.0	150.0
Pass No. 204	

4453.33

FEET
1:240

3' AMPLITUDE (mV)	
0.0	100.0
AMPLITUDE X 5 (mV)	
0.0	20.0
3' TRAVEL TIME (μs)	
800.0	150.0
Logging Up	
Shutin	

FREE PIPE TIME (μs)	
200.0	1200.0
5' VARIABLE DENSITY (μs)	
200.00	1200.00
File FINAL.pre	
130503	