

GREAT WESTERN OIL & GAS COMPANY

KODAK SOUTH FD 26-A, 25-202HC, 25-239HN, 25-279HN, 27-299HN, 27-259HC, 27-222HN,
26-B, 25-399HN, 25-362HN, 25-319HN, 25-282HC, 27-339HN, 27-339HC, 27-379HN & 27-382HN

LOCATED IN WELD COUNTY, COLORADO

SECTION 26, T6N, R67W, 6th P.M.

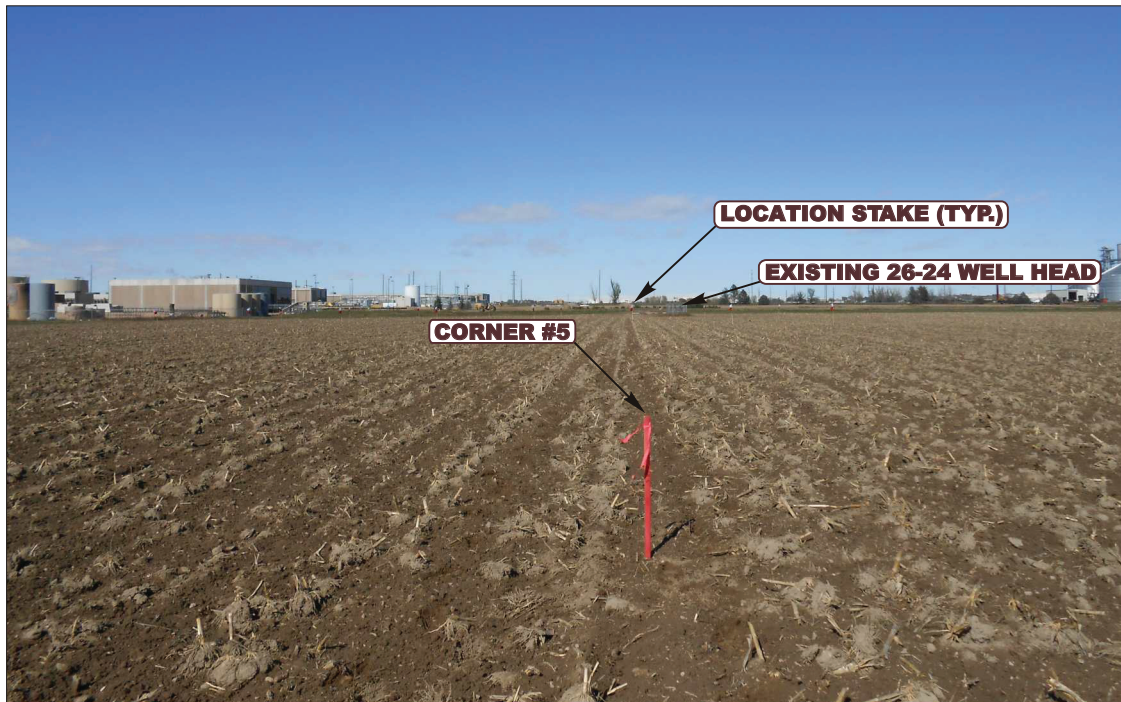


PHOTO: VIEW FROM CORNER #5 TO LOCATION STAKES

CAMERA ANGLE: NORTHERLY



PHOTO: VIEW FROM BEGINNING OF PROPOSED ACCESS

CAMERA ANGLE: SOUTHERLY



- Since 1964 -

U
E
L
S

Uintah Engineering & Land Surveying

85 South 200 East Vernal, Utah 84078
(435) 789-1017 * FAX (435) 789-1813

LOCATION PHOTOS

10 28 13
MONTH DAY YEAR

TAKEN BY: D.N.

DRAWN BY: J.L.G.

REVISED: 00-00-00

PHOTO

P1

GREAT WESTERN OIL & GAS COMPANY

KODAK SOUTH FD 26-A, 25-202HC, 25-239HN, 25-279HN, 27-299HN, 27-259HC, 27-222HN,
26-B, 25-399HN, 25-362HN, 25-319HN, 25-282HC, 27-339HN, 27-339HC, 27-379HN & 27-382HN

LOCATED IN WELD COUNTY, COLORADO

SECTION 26, T6N, R67W, 6th P.M.



PHOTO: VIEW OF LOCATION STAKES

CAMERA ANGLE: NORTHERLY



PHOTO: VIEW OF LOCATION STAKES

CAMERA ANGLE: EASTERLY



- Since 1964 -

U
E
L
S

Uintah Engineering & Land Surveying

85 South 200 East Vernal, Utah 84078
(435) 789-1017 * FAX (435) 789-1813

LOCATION PHOTOS

10 28 13
MONTH DAY YEAR

TAKEN BY: D.N.

DRAWN BY: J.L.G.

REVISED: 00-00-00

PHOTO

P2

GREAT WESTERN OIL & GAS COMPANY

KODAK SOUTH FD 26-A, 25-202HC, 25-239HN, 25-279HN, 27-299HN, 27-259HC, 27-222HN,
26-B, 25-399HN, 25-362HN, 25-319HN, 25-282HC, 27-339HN, 27-339HC, 27-379HN & 27-382HN

LOCATED IN WELD COUNTY, COLORADO

SECTION 26, T6N, R67W, 6th P.M.



PHOTO: VIEW OF LOCATION STAKES

CAMERA ANGLE: SOUTHERLY



PHOTO: VIEW OF LOCATION STAKES

CAMERA ANGLE: WESTERLY



- Since 1964 -

**U
E
L
S**

Uintah Engineering & Land Surveying

85 South 200 East Vernal, Utah 84078
(435) 789-1017 * FAX (435) 789-1813

LOCATION PHOTOS

10 **28** **13**
MONTH DAY YEAR

TAKEN BY: D.N.

DRAWN BY: J.L.G.

REVISED: 00-00-00

PHOTO

P3