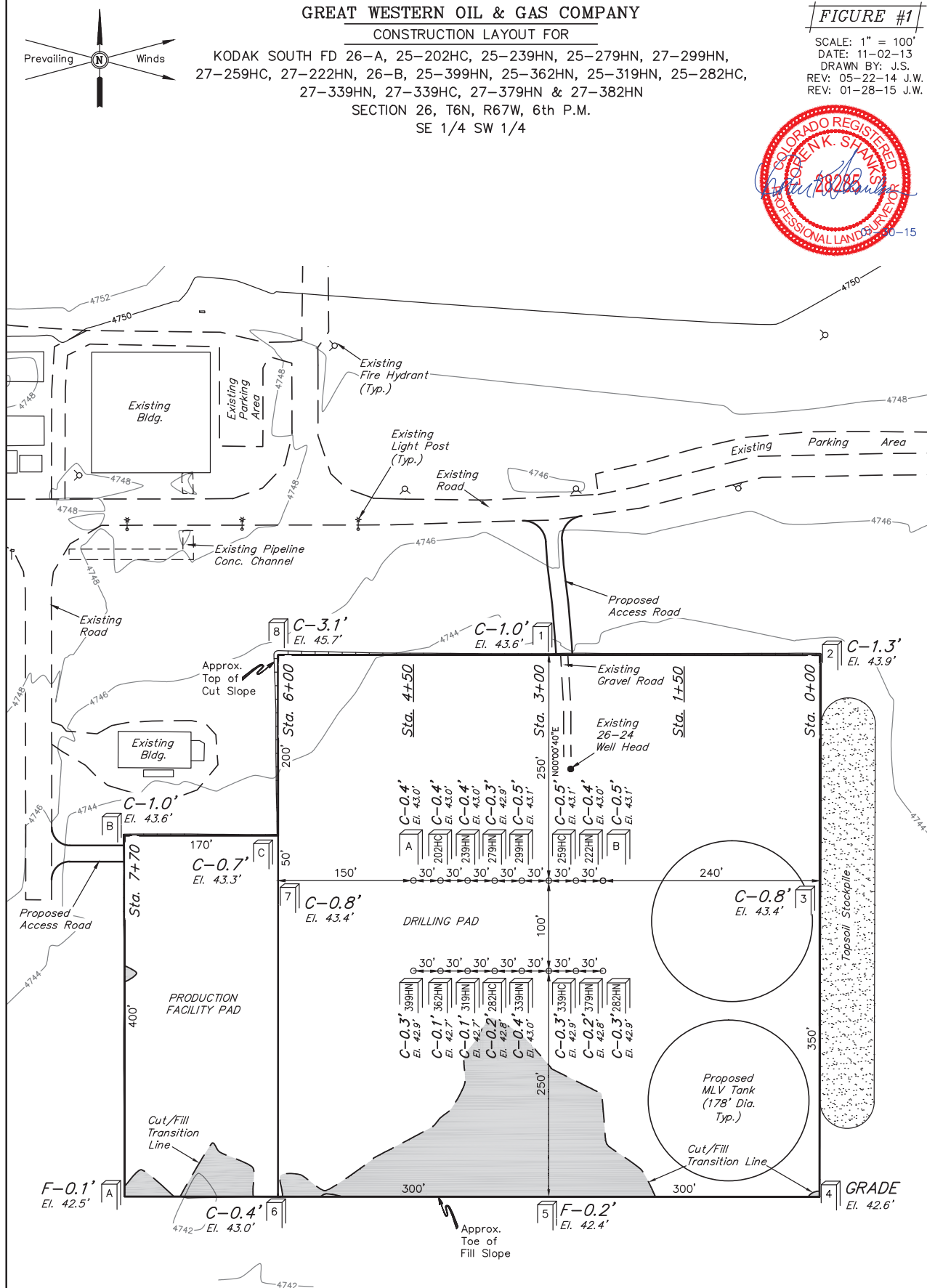


CONSTRUCTION LAYOUT FOR

*FIGURE #1*



UINTAH ENGINEERING & LAND SURVEYING  
85 So. 200 East \* Vernal, Utah 84078 \* (435) 789-1017

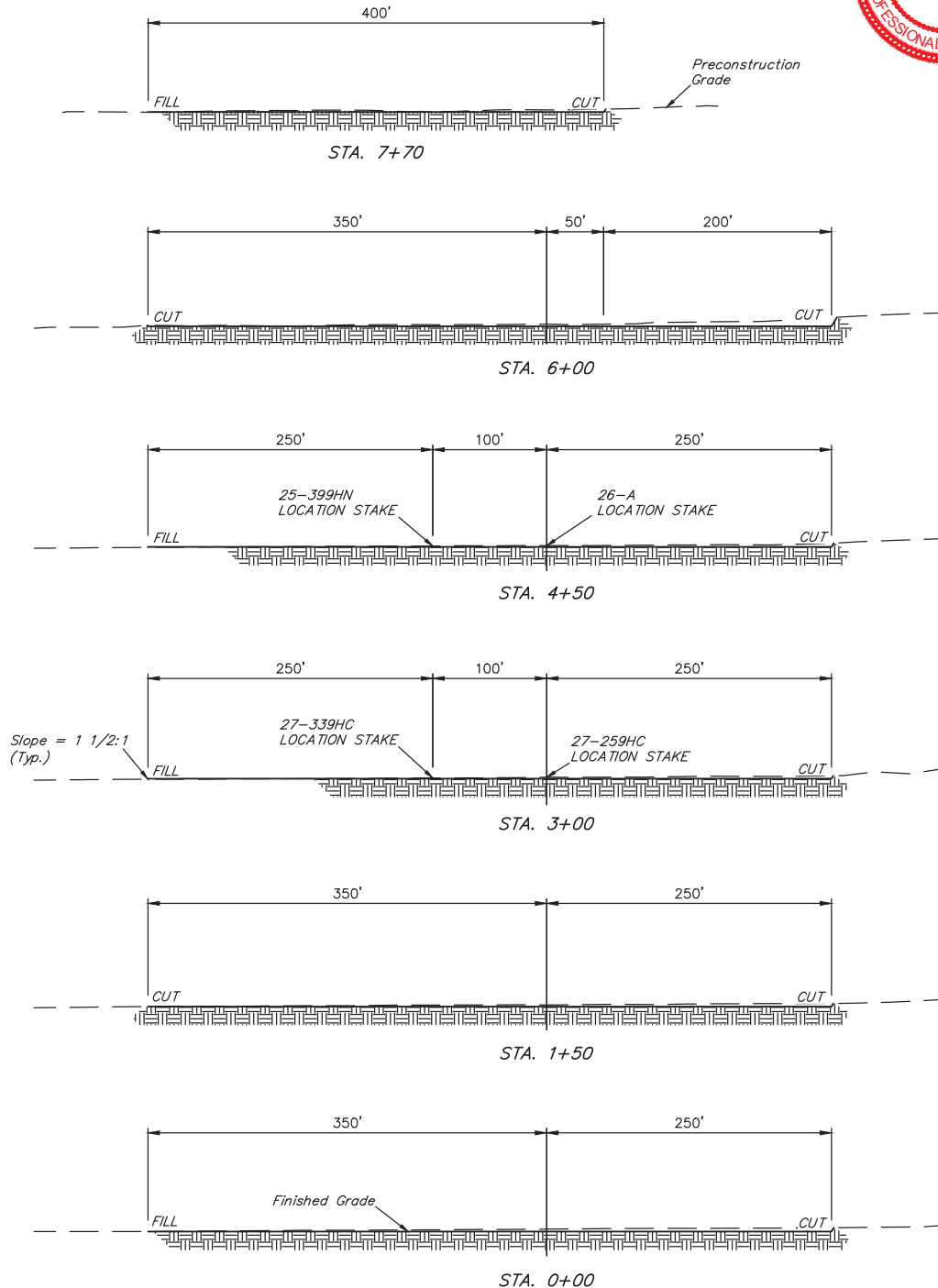
1" = 40'  
X-Section  
Scale  
1" = 100'  
DATE: 11-02-13  
DRAWN BY: J.S.  
REV: 03-23-14  
REV: 01-28-15 J.W.

# GREAT WESTERN OIL & GAS COMPANY

## CONSTRUCTION LAYOUT CROSS SECTIONS FOR

KODAK SOUTH FD 26-A, 25-202HC, 25-239HN, 25-279HN, 27-299HN,  
27-259HC, 27-222HN, 26-B, 25-399HN, 25-362HN, 25-319HN, 25-282HC,  
27-339HN, 27-339HC, 27-379HN & 27-382HN  
SECTION 26, T6N, R67W, 6th P.M.  
SE 1/4 SW 1/4

FIGURE #2



NOTE:  
Topsoil should not be  
Stripped Below Finished  
Grade on Substructure Area.

\* NOTE:  
FILL QUANTITY INCLUDES  
5% FOR COMPACTION

### APPROXIMATE YARDAGES

(6") Topsoil Stripping = 7,990 Cu. Yds.  
Remaining Location = 2,610 Cu. Yds.  
TOTAL CUT = 10,600 CU. YDS.  
FILL = 2,610 CU. YDS.

EXCESS MATERIAL = 7,990 Cu. Yds.  
Topsoil = 7,990 Cu. Yds.  
EXCESS UNBALANCE = 0 Cu. Yds.  
(After Interim Rehabilitation)

APPROXIMATE ACREAGE  
WELL SITE DISTURBANCE = ± 10.538 ACRES  
ACCESS ROAD DISTURBANCE = ± 0.159 ACRES  
TOTAL = ± 10.697 ACRES

UINTAH ENGINEERING & LAND SURVEYING  
85 So. 200 East \* Vernal, Utah 84078 \* (435) 789-1017