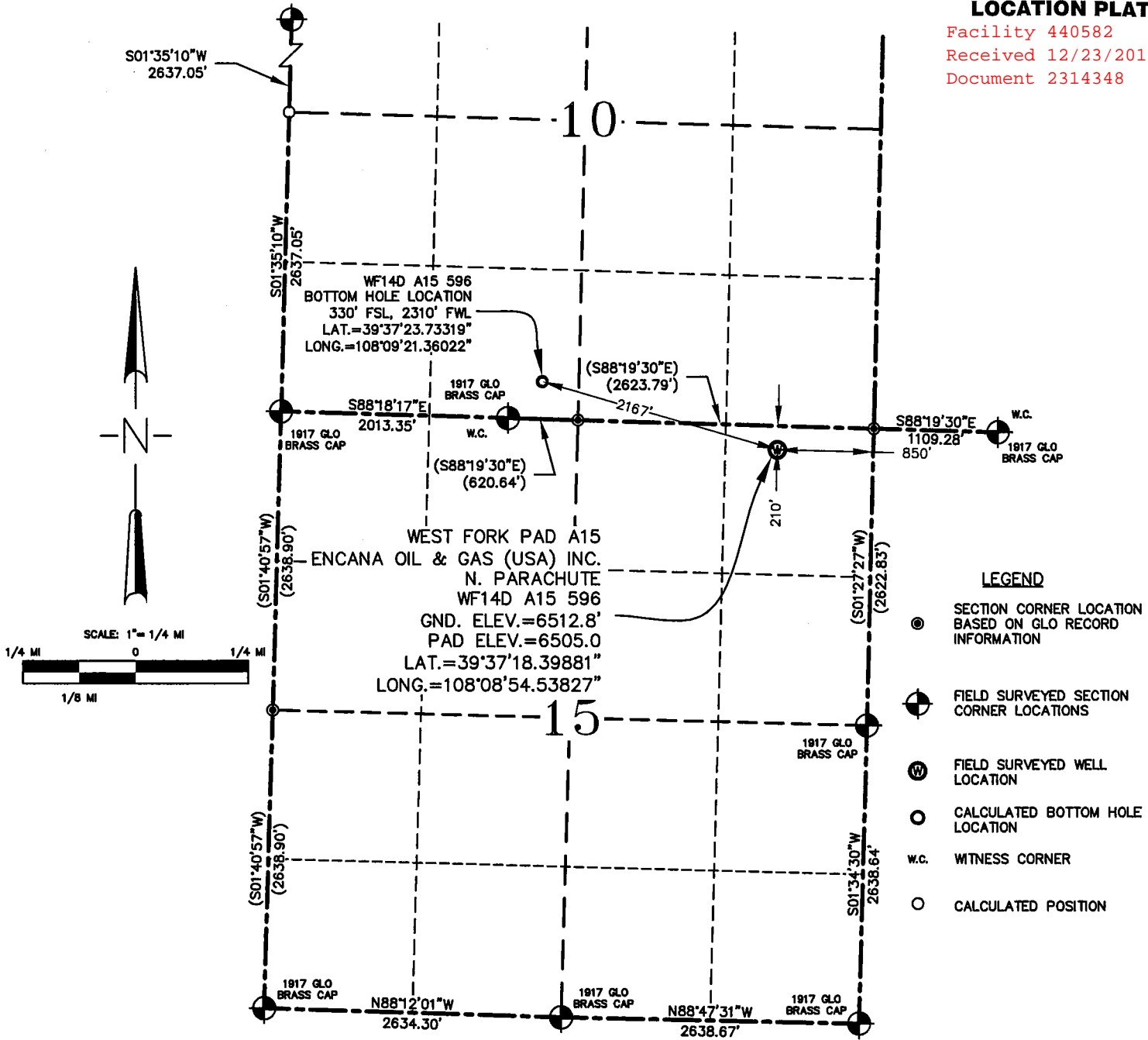


SECTION 15, T. 5 S., R. 96 W., 6TH P.M.

PLAT #1  
LOCATION PLAT

Facility 440582  
Received 12/23/2014  
Document 2314348



THIS WELL LOCATION PLAT WAS PREPARED FOR ENCANA OIL & GAS (USA) INC. TO LOCATE THE N. PARACHUTE WF14D A15 596 WELL, 210 FEET FROM THE NORTH LINE AND 850 FEET FROM THE EAST LINE IN THE NE¼NE¼ OF SECTION 15, T. 5 S., R. 96 W. OF THE 6TH P.M., GARFIELD COUNTY, COLORADO.

SURVEYOR'S CERTIFICATE

I, Travis D. Pearson, a Professional Land Surveyor of the State of Colorado, do hereby state that the above described property was surveyed under my direct supervision and that the accompanying map is correct to the best of my knowledge.

Colorado P.L.S. No. 37603

REFERENCE NOTES

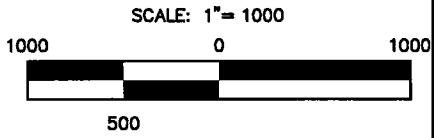
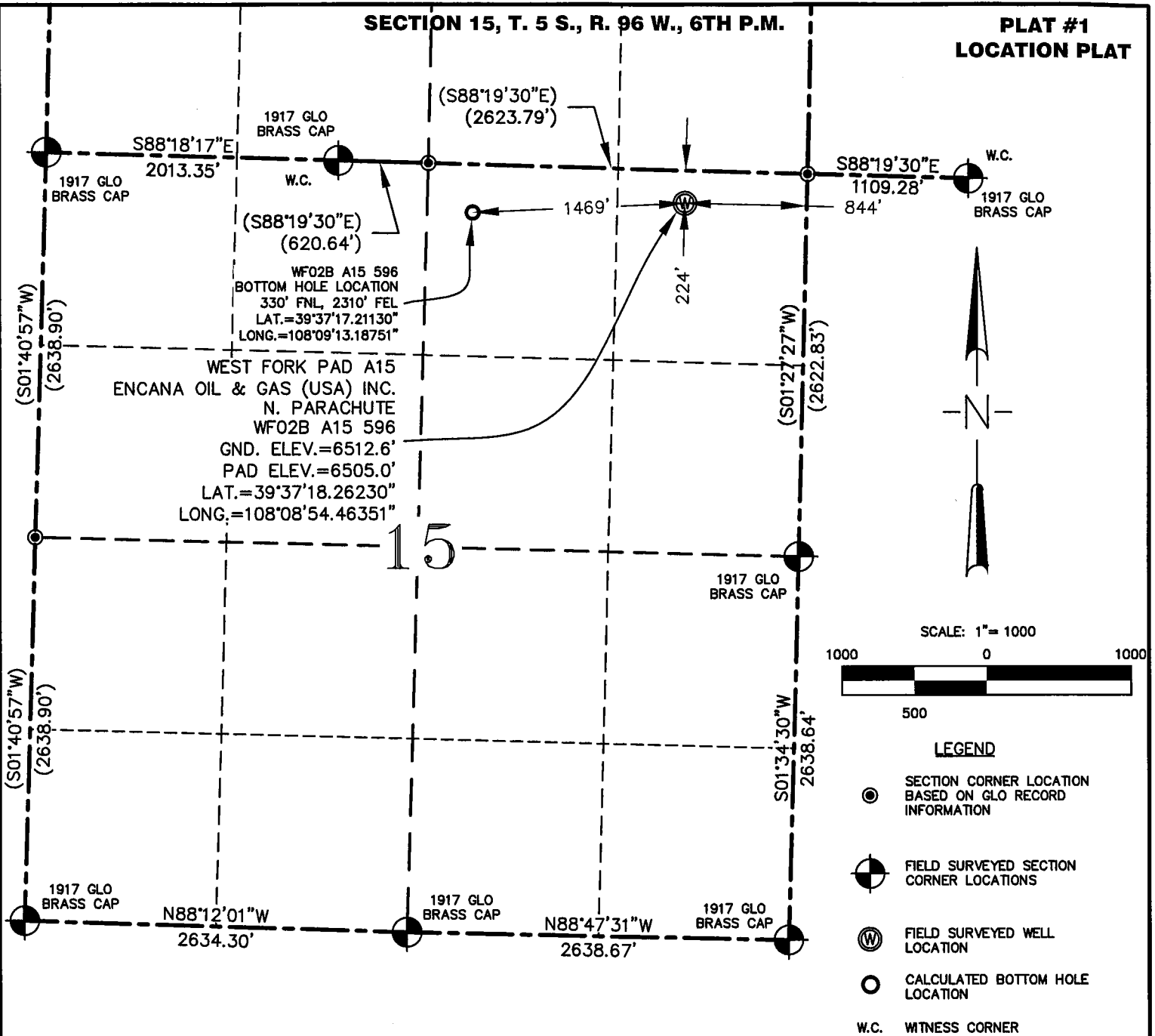
- 1) T.5S., R.96W., 6TH P.M. GLO PLAT
- 2) U.S.G.S. QUAD: CIRCLE DOT GULCH
- 3) ELEVATIONS BASED ON NAVD 1988
- 4) LATITUDES AND LONGITUDES BASED ON NAD 83, COLORADO CENTRAL ZONE
- 5) SURFACE AND BOTTOM HOLE LOCATIONS ARE MEASURED 90° FROM SECTION LINES.

**ENCANA OIL & GAS (USA) INC.  
N. PARACHUTE WF A15 T5S R96W**

INBERG-MILLER ENGINEERS 124 EAST MAIN STREET 307-856-8136 RIVERTON, WYOMING 82501	SURVEYED: 11/9/04	SCALE: 1"=1000'
	DRAFTED: 12/14/04	DWG.: A15_PLATS
	REVISED:	SHEET: 1 of 6

SECTION 15, T. 5 S., R. 96 W., 6TH P.M.

PLAT #1  
LOCATION PLAT



LEGEND

- SECTION CORNER LOCATION BASED ON GLO RECORD INFORMATION
- ⊙ FIELD SURVEYED SECTION CORNER LOCATIONS
- ⊙(W) FIELD SURVEYED WELL LOCATION
- CALCULATED BOTTOM HOLE LOCATION
- W.C. WITNESS CORNER

THIS WELL LOCATION PLAT WAS PREPARED FOR ENCANA OIL & GAS (USA) INC. TO LOCATE THE N. PARACHUTE WF02B A15 596 WELL, 224 FEET FROM THE NORTH LINE AND 844 FEET FROM THE EAST LINE IN THE NE¼NE¼ OF SECTION 15, T. 5 S., R. 96 W. OF THE 6TH P.M., GARFIELD COUNTY, COLORADO.

REFERENCE NOTES

- 1) T.5S., R.96W., 6TH P.M. GLO PLAT
- 2) U.S.G.S. QUAD: CIRCLE DOT GULCH
- 3) ELEVATIONS BASED ON NAVD 1988
- 4) LATITUDES AND LONGITUDES BASED ON NAD 83, COLORADO CENTRAL ZONE
- 5) SURFACE AND BOTTOM HOLE LOCATIONS ARE MEASURED 90° FROM SECTION LINES.

SURVEYOR'S CERTIFICATE

I, Travis D. Pearson, a Professional Land Surveyor of the State of Colorado, do hereby state that the above described property was surveyed under my direct supervision and that the accompanying map is correct to the best of my knowledge.

Colorado P.L.S. No. 37603

**ENCANA OIL & GAS (USA) INC.**  
**N. PARACHUTE WF A15 T5S R96W**

INBERG-MILLER ENGINEERS

124 EAST MAIN STREET

307-856-8136 RIVERTON, WYOMING

82501

SURVEYED: 11/9/04

DRAFTED: 12/14/04

REVISED:

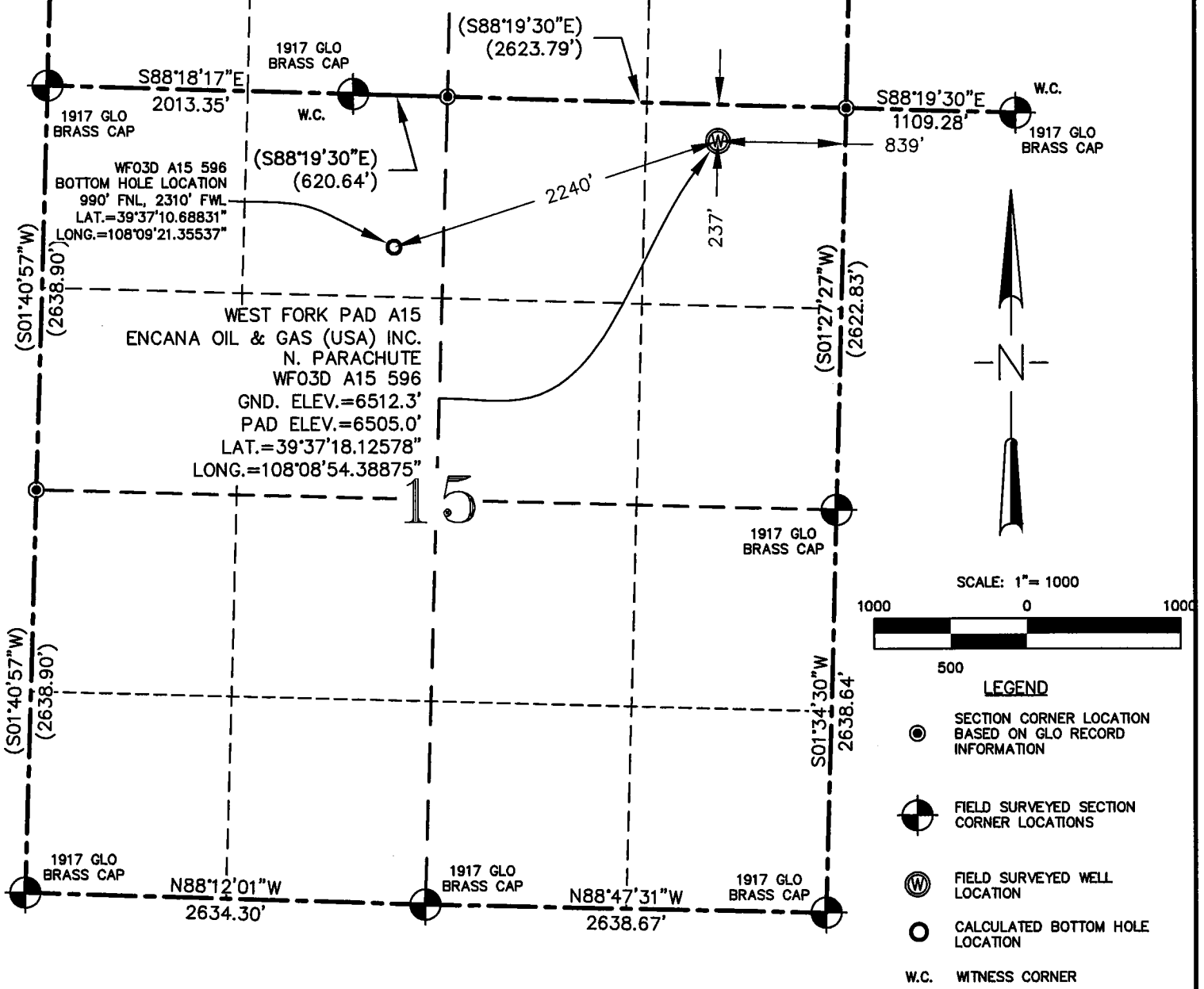
SCALE: 1"=1000'

DWG.: A15\_PLATS

SHEET: 1 of 6

SECTION 15, T. 5 S., R. 96 W., 6TH P.M.

PLAT #1  
LOCATION PLAT



THIS WELL LOCATION PLAT WAS PREPARED FOR ENCANA OIL & GAS (USA) INC. TO LOCATE THE N. PARACHUTE WF03D A15 596 WELL, 237 FEET FROM THE NORTH LINE AND 839 FEET FROM THE EAST LINE IN THE NE¼NE¼ OF SECTION 15, T. 5 S., R. 96 W. OF THE 6TH P.M., GARFIELD COUNTY, COLORADO.

REFERENCE NOTES

- 1) T.5S., R.96W., 6TH P.M. GLO PLAT
- 2) U.S.G.S. QUAD: CIRCLE DOT GULCH
- 3) ELEVATIONS BASED ON NAVD 1988
- 4) LATITUDES AND LONGITUDES BASED ON NAD 83, COLORADO CENTRAL ZONE
- 5) SURFACE AND BOTTOM HOLE LOCATIONS ARE MEASURED 90° FROM SECTION LINES.

SURVEYOR'S CERTIFICATE

I, Travis D. Pearson, a Professional Land Surveyor of the State of Colorado, do hereby state that the above described property was surveyed under my direct supervision and that the accompanying map is correct to the best of my knowledge.

Colorado P.L.S. No. 37603

**ENCANA OIL & GAS (USA) INC.  
N. PARACHUTE WF A15 T5S R96W**

INBERG-MILLER ENGINEERS

124 EAST MAIN STREET

307-856-8136 RIVERTON, WYOMING

82501

SURVEYED: 11/9/04

DRAFTED: 12/14/04

REVISED:

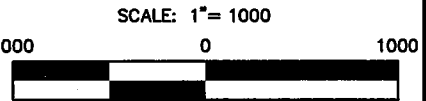
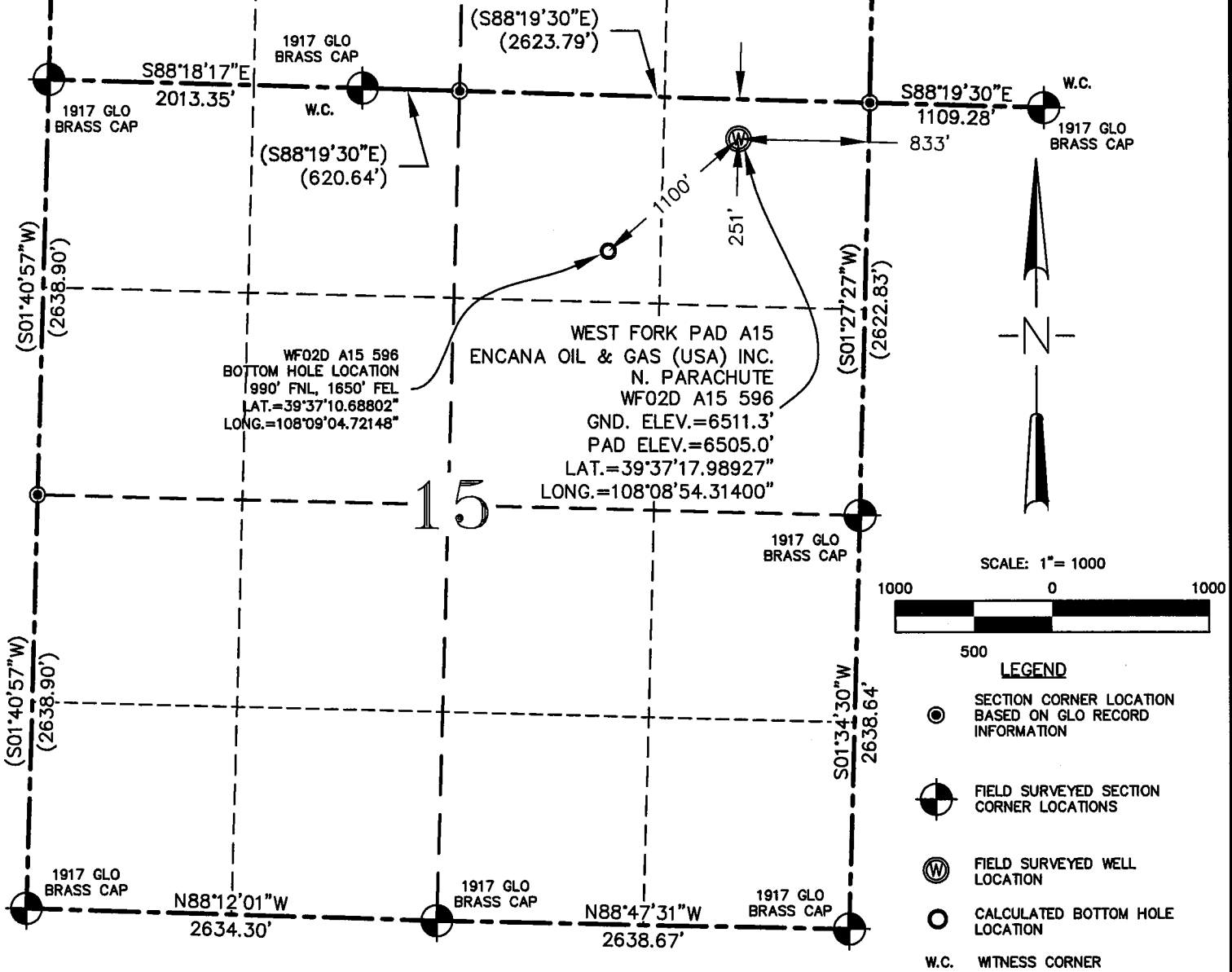
SCALE: 1"=1000'

DWG.: A15\_PLATS

SHEET: 1 of 6

SECTION 15, T. 5 S., R. 96 W., 6TH P.M.

PLAT #1  
LOCATION PLAT



- LEGEND**
- SECTION CORNER LOCATION BASED ON GLO RECORD INFORMATION
  - ⊙ FIELD SURVEYED SECTION CORNER LOCATIONS
  - ⊙(W) FIELD SURVEYED WELL LOCATION
  - CALCULATED BOTTOM HOLE LOCATION
  - W.C. WITNESS CORNER

THIS WELL LOCATION PLAT WAS PREPARED FOR ENCANA OIL & GAS (USA) INC. TO LOCATE THE N. PARACHUTE WF02D A15 596 WELL, 251 FEET FROM THE NORTH LINE AND 833 FEET FROM THE EAST LINE IN THE NE¼NE¼ OF SECTION 15, T. 5 S., R. 96 W. OF THE 6TH P.M., GARFIELD COUNTY, COLORADO.

REFERENCE NOTES

- 1) T.5S., R.96W., 6TH P.M. GLO PLAT
- 2) U.S.G.S. QUAD: CIRCLE DOT GULCH
- 3) ELEVATIONS BASED ON NAVD 1988
- 4) LATITUDES AND LONGITUDES BASED ON NAD 83, COLORADO CENTRAL ZONE
- 5) SURFACE AND BOTTOM HOLE LOCATIONS ARE MEASURED 90° FROM SECTION LINES.

SURVEYOR'S CERTIFICATE

I, Travis D. Pearson, a Professional Land Surveyor of the State of Colorado, do hereby state that the above described property was surveyed under my direct supervision and that the accompanying map is correct to the best of my knowledge.

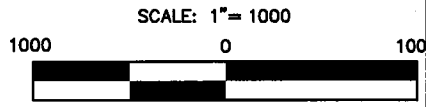
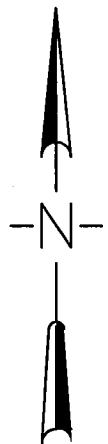
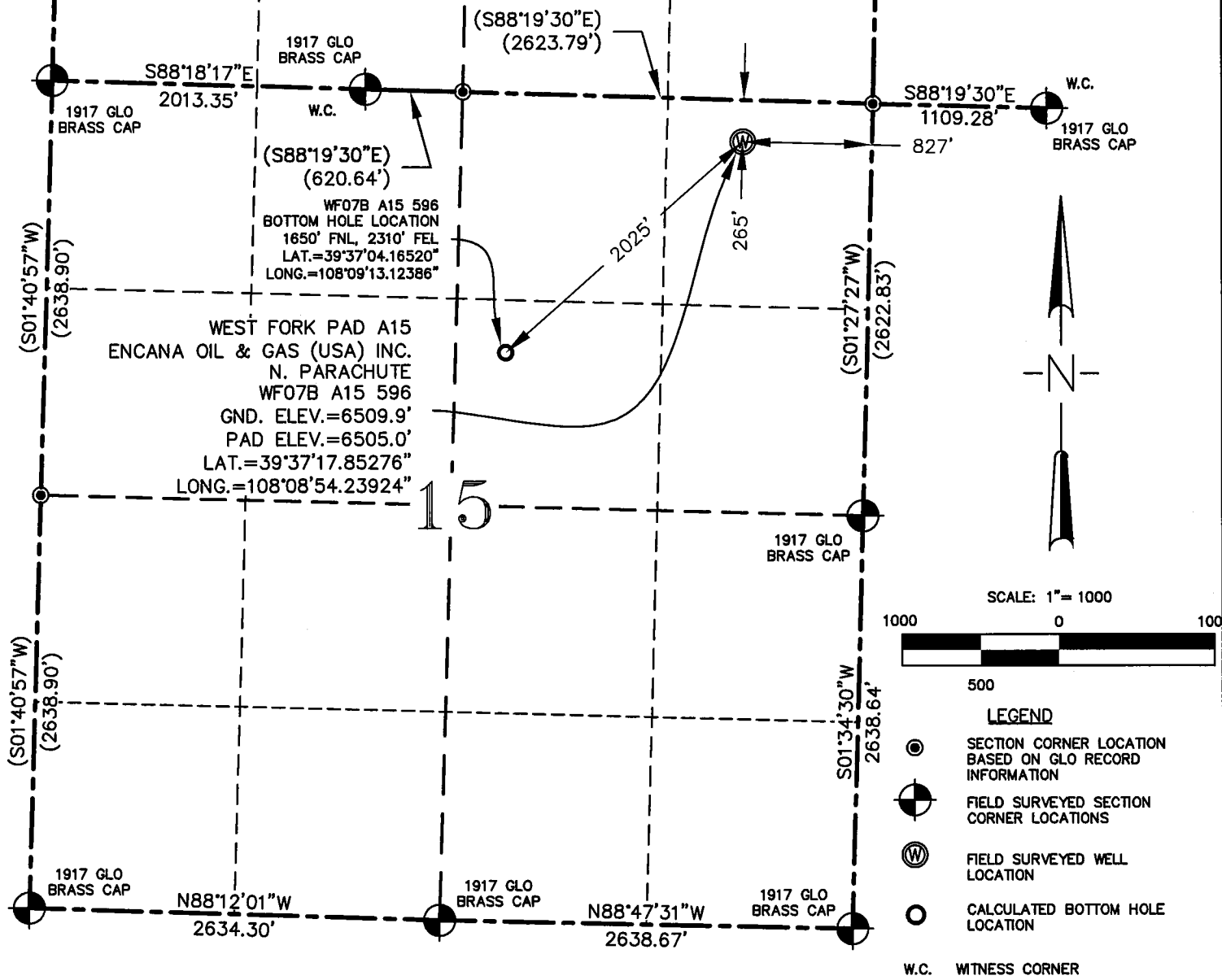
Colorado P.L.S. No. 37603

**ENCANA OIL & GAS (USA) INC.  
N. PARACHUTE WF A15 T5S R96W**

INBERG-MILLER ENGINEERS 124 EAST MAIN STREET 307-856-8136 RIVERTON, WYOMING 82501	SURVEYED: 11/9/04	SCALE: 1"=1000'
	DRAFTED: 12/14/04	DWG.: A15_PLATS
	REVISED:	SHEET: 1 of 6

SECTION 15, T. 5 S., R. 96 W., 6TH P.M.

PLAT #1  
LOCATION PLAT



- LEGEND**
- SECTION CORNER LOCATION BASED ON GLO RECORD INFORMATION
  - ⊙ FIELD SURVEYED SECTION CORNER LOCATIONS
  - ⊙ WITH W FIELD SURVEYED WELL LOCATION
  - CALCULATED BOTTOM HOLE LOCATION
  - W.C. WITNESS CORNER

THIS WELL LOCATION PLAT WAS PREPARED FOR ENCANA OIL & GAS (USA) INC. TO LOCATE THE N. PARACHUTE WF07B A15 596 WELL, 265 FEET FROM THE NORTH LINE AND 827 FEET FROM THE EAST LINE IN THE NE¼NE¼ OF SECTION 15, T. 5 S., R. 96 W. OF THE 6TH P.M., GARFIELD COUNTY, COLORADO.

REFERENCE NOTES

- 1) T.5S., R.96W., 6TH P.M. GLO PLAT
- 2) U.S.G.S. QUAD: CIRCLE DOT GULCH
- 3) ELEVATIONS BASED ON NAVD 1988
- 4) LATITUDES AND LONGITUDES BASED ON NAD 83, COLORADO CENTRAL ZONE
- 5) SURFACE AND BOTTOM HOLE LOCATIONS ARE MEASURED 90° FROM SECTION LINES.

SURVEYOR'S CERTIFICATE

I, Travis D. Pearson, a Professional Land Surveyor of the State of Colorado, do hereby state that the above described property was surveyed under my direct supervision and that the accompanying map is correct to the best of my knowledge.

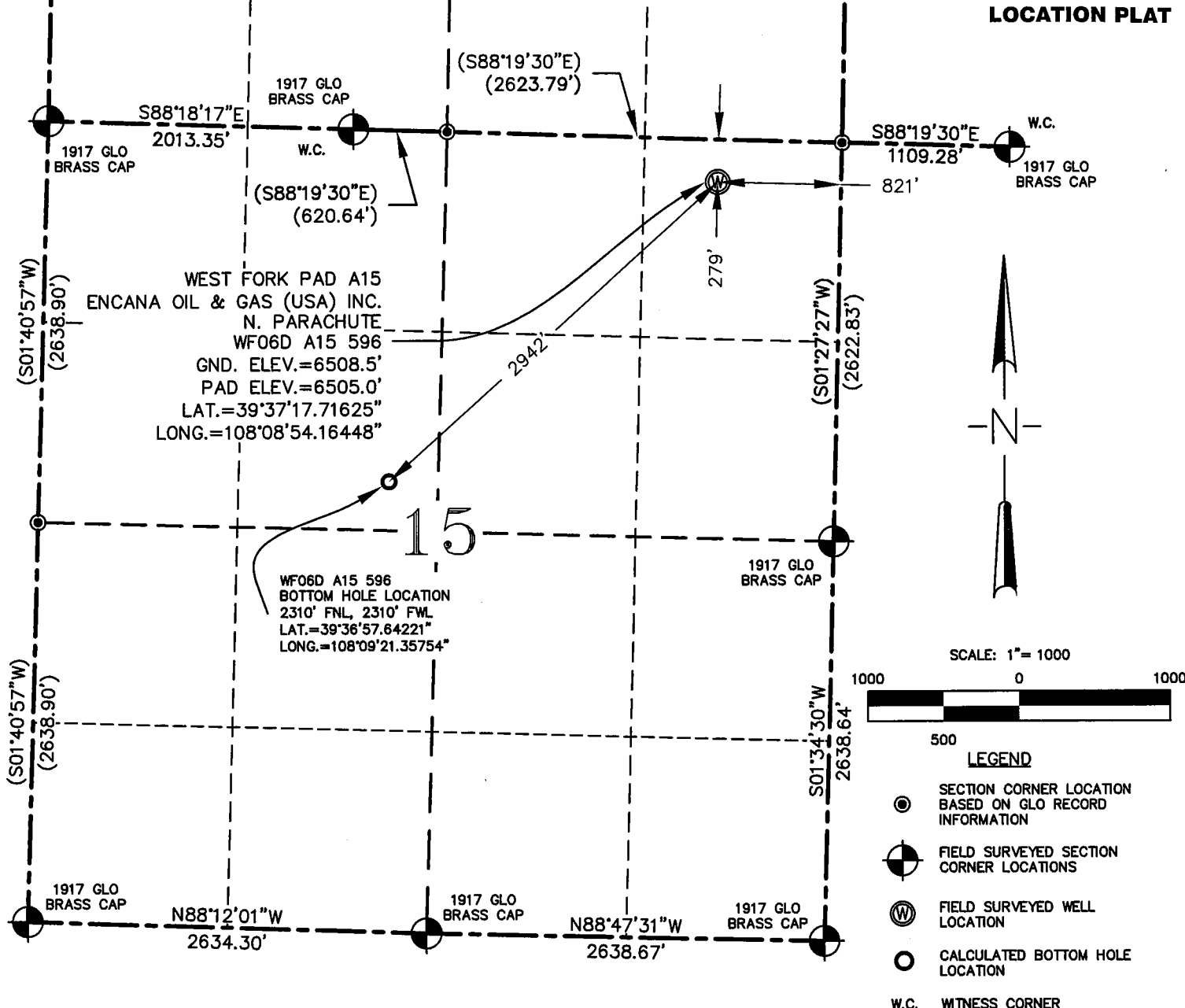
Colorado P.L.S. No. 37603

**ENCANA OIL & GAS (USA) INC.  
N. PARACHUTE WF A15 T5S R96W**

INBERG-MILLER ENGINEERS 124 EAST MAIN STREET 307-856-8136 RIVERTON, WYOMING 82501	SURVEYED: 11/9/04	SCALE: 1"=1000'
	DRAFTED: 12/14/04	DWG.: A15_PLATS
	REVISED:	SHEET: 1 of 6

SECTION 15, T. 5 S., R. 96 W., 6TH P.M.

PLAT #1  
LOCATION PLAT



THIS WELL LOCATION PLAT WAS PREPARED FOR ENCANA OIL & GAS (USA) INC. TO LOCATE THE N. PARACHUTE WF06D A15 596 WELL, 279 FEET FROM THE NORTH LINE AND 821 FEET FROM THE EAST LINE IN THE NE¼NE¼ OF SECTION 15, T. 5 S., R. 96 W. OF THE 6TH P.M., GARFIELD COUNTY, COLORADO.

REFERENCE NOTES

- 1) T.5S., R.96W., 6TH P.M. GLO PLAT
- 2) U.S.G.S. QUAD: CIRCLE DOT GULCH
- 3) ELEVATIONS BASED ON NAVD 1988
- 4) LATITUDES AND LONGITUDES BASED ON NAD 83, COLORADO CENTRAL ZONE
- 5) SURFACE AND BOTTOM HOLE LOCATIONS ARE MEASURED 90° FROM SECTION LINES.

SURVEYOR'S CERTIFICATE

I, Travis D. Pearson, a Professional Land Surveyor of the State of Colorado, do hereby state that the above described property was surveyed under my direct supervision and that the accompanying map is correct to the best of my knowledge.

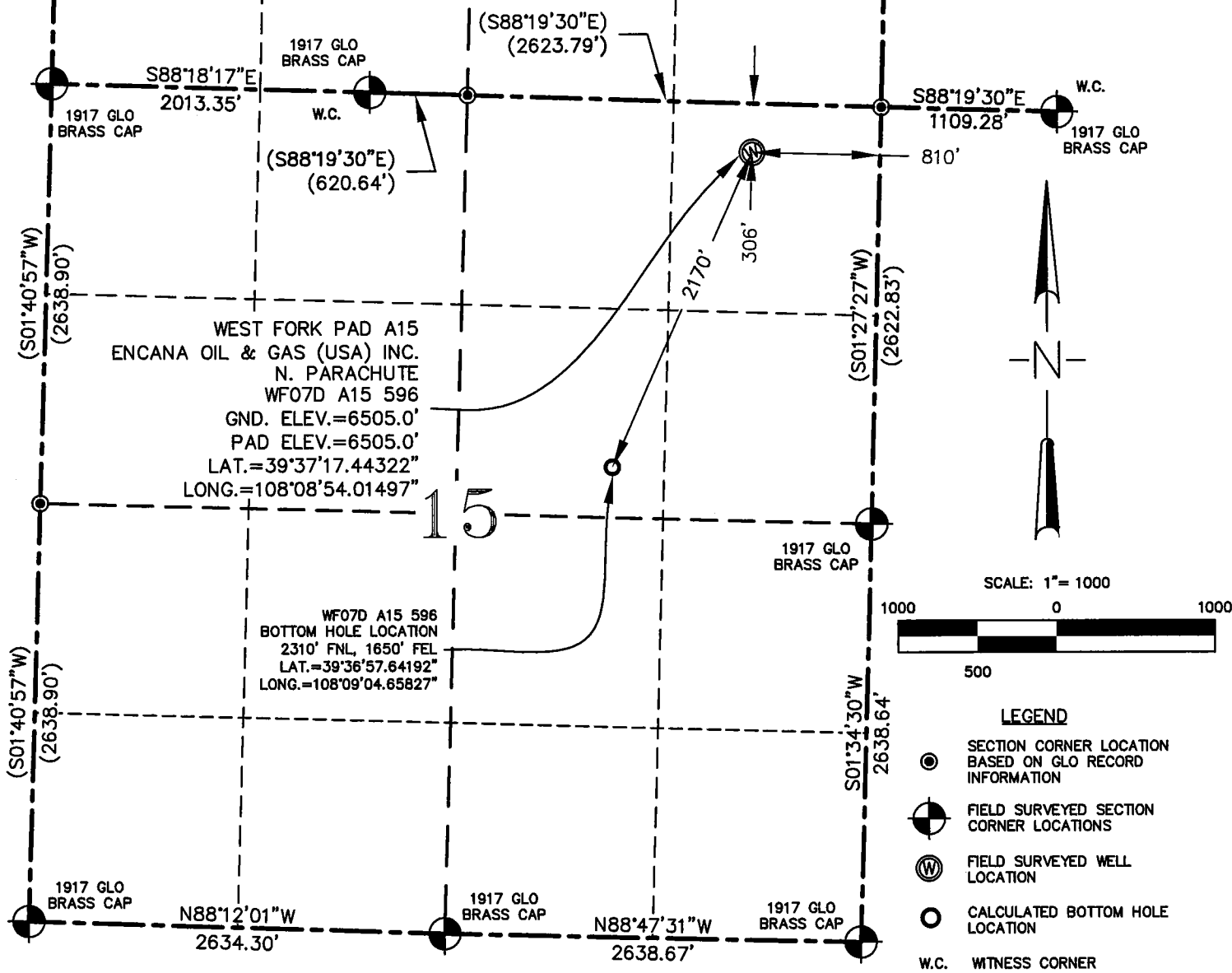
Colorado P.L.S. No. 37603

**ENCANA OIL & GAS (USA) INC.  
N. PARACHUTE WF A15 T5S R96W**

INBERG-MILLER ENGINEERS 124 EAST MAIN STREET 307-856-8136 RIVERTON, WYOMING 82501	SURVEYED: 11/9/04	SCALE: 1"=1000'
	DRAFTED: 12/14/04	DWG.: A15_PLATS
	REVISED:	SHEET: 1 of 6

SECTION 15, T. 5 S., R. 96 W., 6TH P.M.

PLAT #1  
LOCATION PLAT



THIS WELL LOCATION PLAT WAS PREPARED FOR ENCANA OIL & GAS (USA) INC. TO LOCATE THE N. PARACHUTE WF10B A15 596 WELL, 306 FEET FROM THE NORTH LINE AND 810 FEET FROM THE EAST LINE IN THE NE¼NE¼ OF SECTION 15, T. 5 S., R. 96 W. OF THE 6TH P.M., GARFIELD COUNTY, COLORADO.

REFERENCE NOTES

- 1) T.5S., R.96W., 6TH P.M. GLO PLAT
- 2) U.S.G.S. QUAD: CIRCLE DOT GULCH
- 3) ELEVATIONS BASED ON NAVD 1988
- 4) LATITUDES AND LONGITUDES BASED ON NAD 83, COLORADO CENTRAL ZONE
- 5) SURFACE AND BOTTOM HOLE LOCATIONS ARE MEASURED 90° FROM SECTION LINES.

SURVEYOR'S CERTIFICATE

I, Travis D. Pearson, a Professional Land Surveyor of the State of Colorado, do hereby state that the above described property was surveyed under my direct supervision and that the accompanying map is correct to the best of my knowledge.

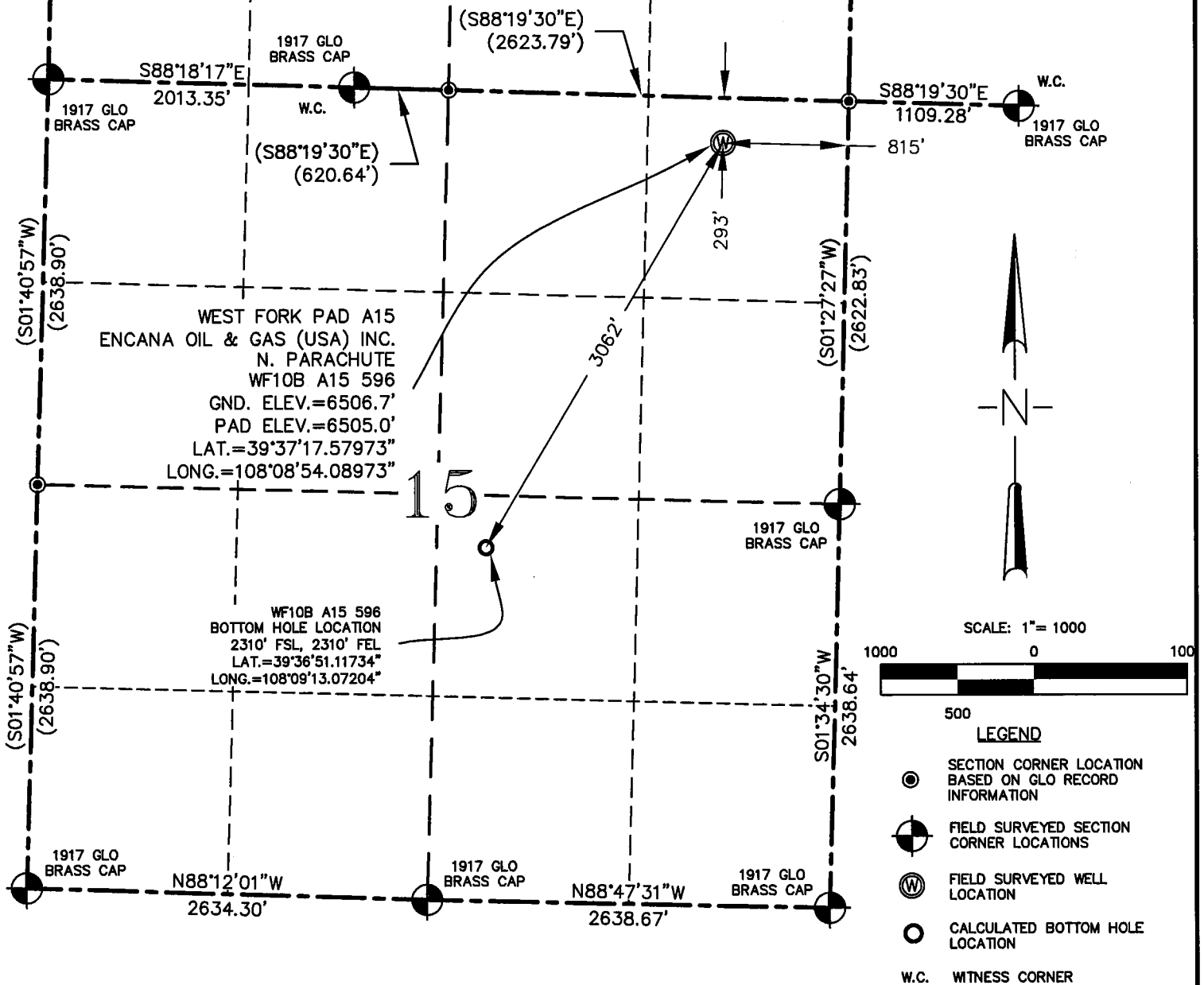
Colorado P.L.S. No. 37603

**ENCANA OIL & GAS (USA) INC.  
N. PARACHUTE WF A15 T5S R96W**

INBERG-MILLER ENGINEERS 124 EAST MAIN STREET 307-856-8136 RIVERTON, WYOMING 82501	SURVEYED: 11/9/04	SCALE: 1"=1000'
	DRAFTED: 12/14/04	DWG.: A15_PLATS
	REVISED:	SHEET: 1 of 6

SECTION 15, T. 5 S., R. 96 W., 6TH P.M.

PLAT #1  
LOCATION PLAT



THIS WELL LOCATION PLAT WAS PREPARED FOR ENCANA OIL & GAS (USA) INC. TO LOCATE THE N. PARACHUTE WF07D A15 596 WELL, 293 FEET FROM THE NORTH LINE AND 815 FEET FROM THE EAST LINE IN THE NE¼NE¼ OF SECTION 15, T. 5 S., R. 96 W. OF THE 6TH P.M., GARFIELD COUNTY, COLORADO.

REFERENCE NOTES

- 1) T.5S., R.96W., 6TH P.M. GLO PLAT
- 2) U.S.G.S. QUAD: CIRCLE DOT GULCH
- 3) ELEVATIONS BASED ON NAVD 1988
- 4) LATITUDES AND LONGITUDES BASED ON NAD 83, COLORADO CENTRAL ZONE
- 5) SURFACE AND BOTTOM HOLE LOCATIONS ARE MEASURED 90° FROM SECTION LINES.

SURVEYOR'S CERTIFICATE

I, Travis D. Pearson, a Professional Land Surveyor of the State of Colorado, do hereby state that the above described property was surveyed under my direct supervision and that the accompanying map is correct to the best of my knowledge.

Colorado P.L.S. No. 37603

**ENCANA OIL & GAS (USA) INC.  
N. PARACHUTE WF A15 T5S R96W**

INBERG-MILLER ENGINEERS

124 EAST MAIN STREET

307-856-8136 RIVERTON, WYOMING

82501

SURVEYED: 11/9/04

DRAFTED: 12/14/04

REVISED:

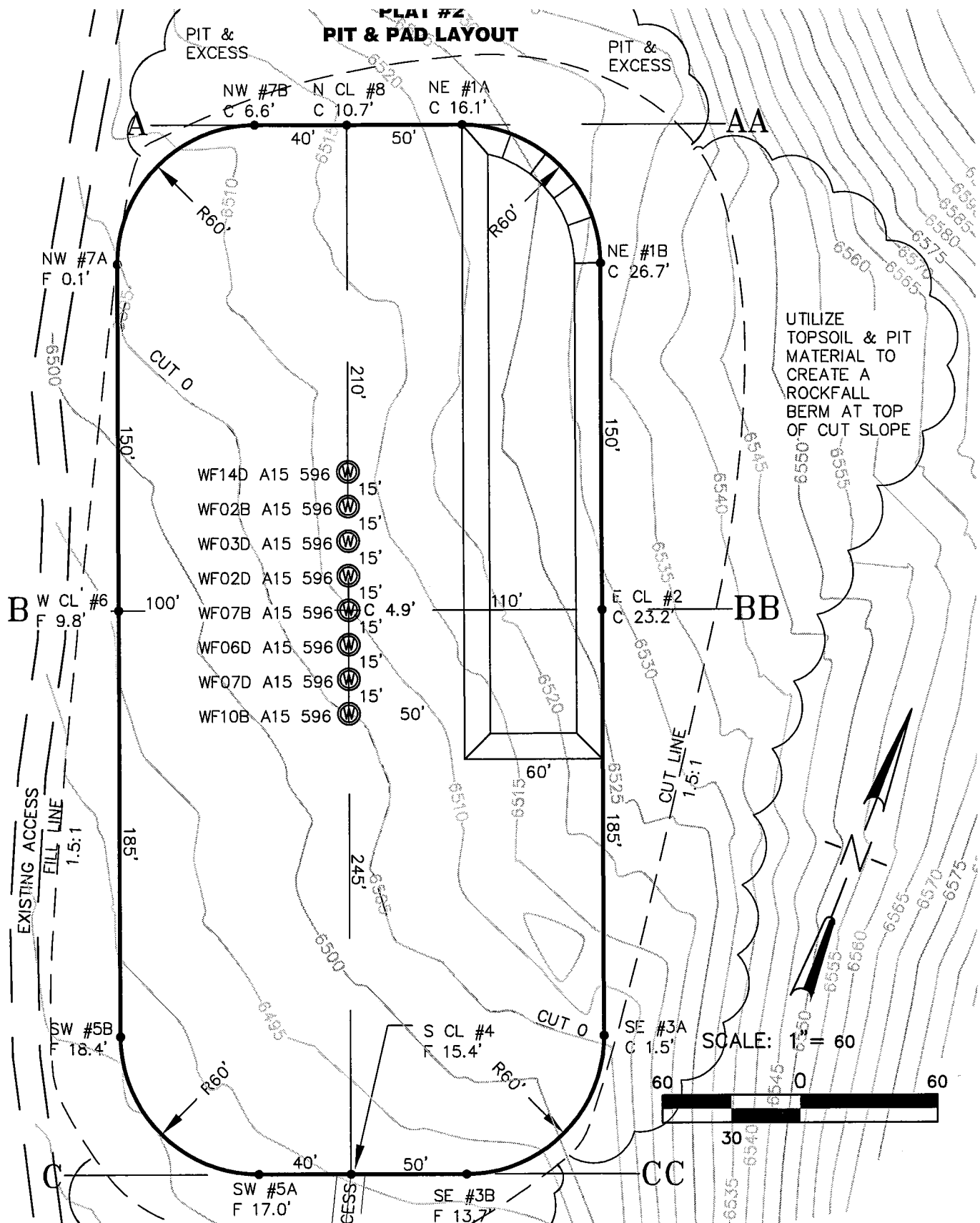
SCALE: 1"=1000'

DWG.: A15\_PLATS

SHEET: 1 of 6



**PLAT #2  
PIT & PAD LAYOUT**



UTILIZE  
TOPSOIL & PIT  
MATERIAL TO  
CREATE A  
ROCKFALL  
BERM AT TOP  
OF CUT SLOPE

SCALE: 1" = 60'



ESTIMATED DIRT QUANTITIES				
ITEM	CUT	FILL	TOPSOIL	EXCESS
PAD	17510	27189	2422	-12101
PIT	3400			3400
TOTALS	20910	27189	2422	-8701

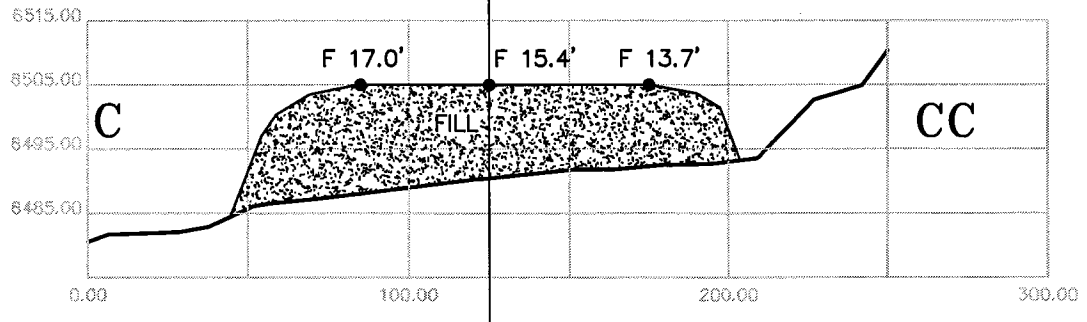
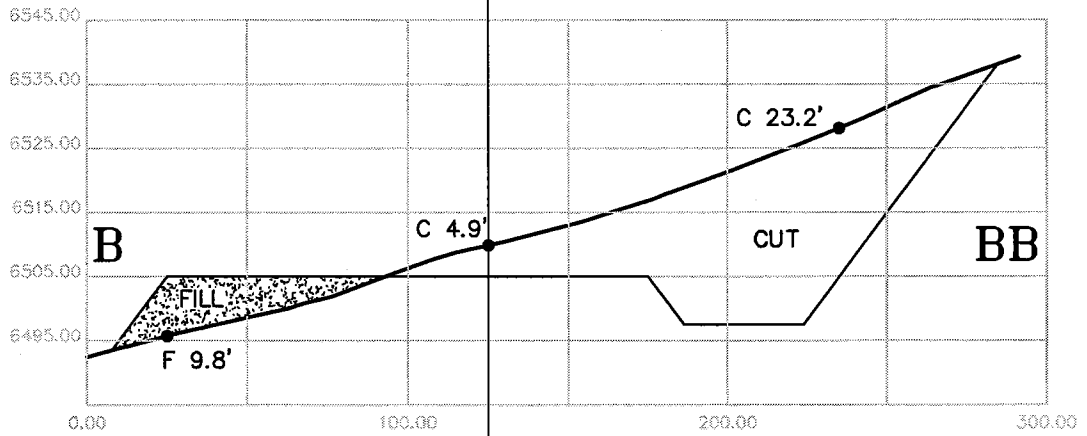
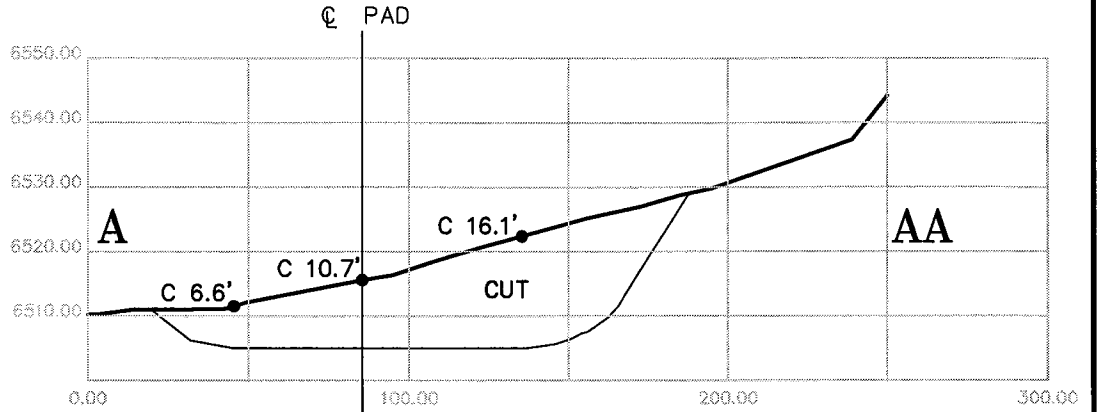
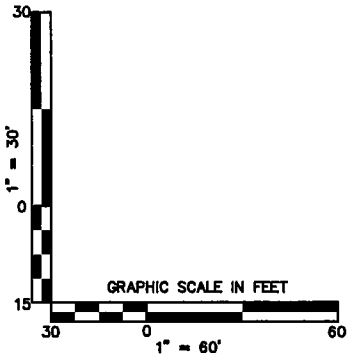
**ENCANA OIL & GAS (USA) INC.  
N. PARACHUTE WF A15 T5S R96W**

INBERG-MILLER ENGINEERS  
124 EAST MAIN STREET

307-856-8136 RIVERTON, WYOMING 82501

SURVEYED: 11/9/04	SCALE: 1"=1000'
DRAFTED: 12/14/04	DWG.: A15_PLATS
REVISED:	SHEET: 2 of 6

**PLAT #3  
CROSS SECTIONS OF PIT & PAD**



**ENCANA OIL & GAS (USA) INC.  
N. PARACHUTE WF A15 T5S R96W**

*INBERG-MILLER ENGINEERS*

*124 EAST MAIN STREET*

*307-856-8136 RIVERTON, WYOMING*

*82501*

SURVEYED: 11/9/04

DRAFTED: 12/14/04

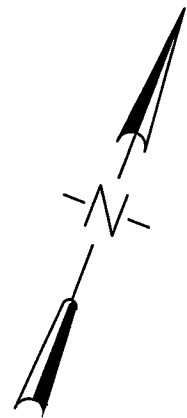
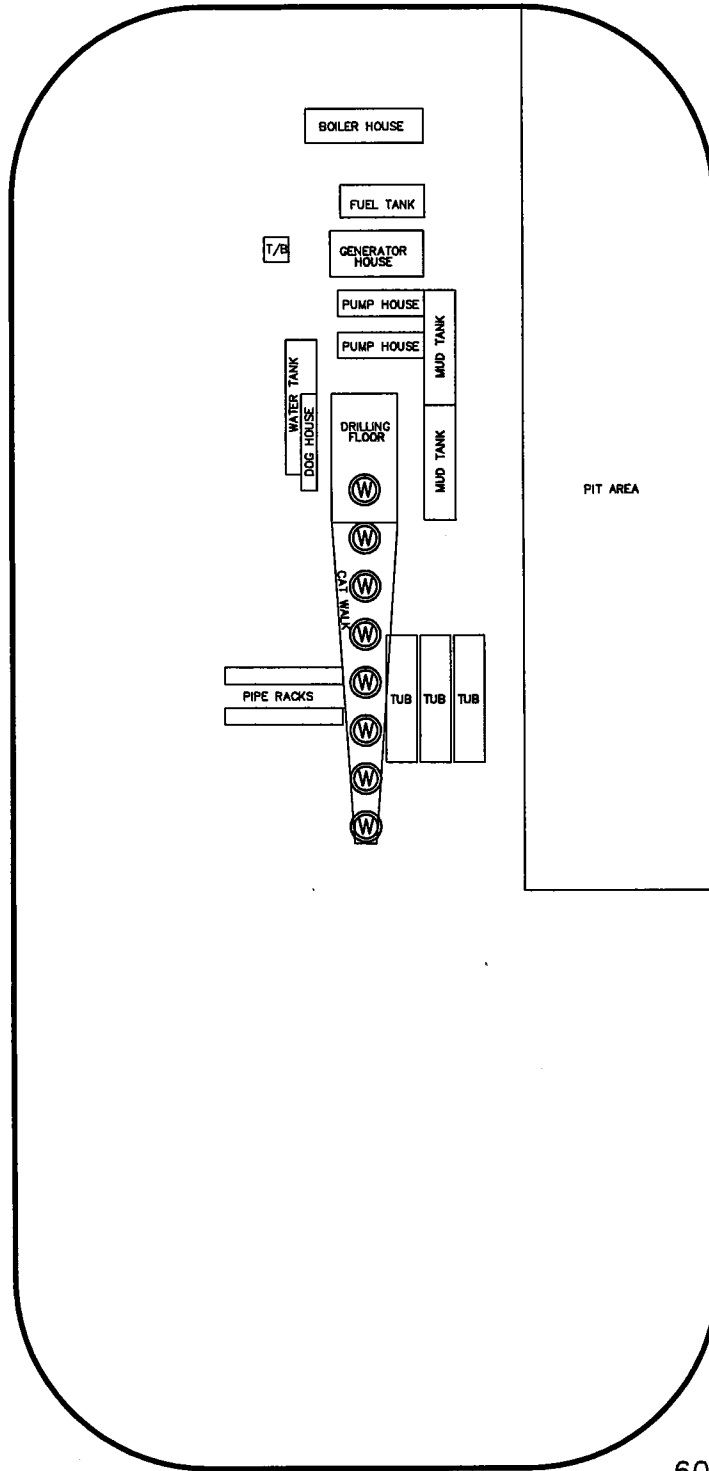
REVISED:

SCALE: 1"=60' H, 1"=30' V

DWG.: A15\_PLATS

SHEET: 3 of 6

**PLAT #4  
RIG LAYOUT**



SCALE: 1" = 60'



**ENCANA OIL & GAS (USA) INC.  
N. PARACHUTE WF A15 T5S R96W**

INBERG-MILLER ENGINEERS

124 EAST MAIN STREET

307-856-8136 RIVERTON, WYOMING

82501

SURVEYED: 11/9/04

DRAFTED: 12/14/04

REVISED:

SCALE: 1"=60'

DWG.: A15\_PLATS

SHEET: 4 of 6

**PLAT #5  
TOPO AND ACCESS**

**N. PARACHUTE  
WF PAD A15**

**PROPOSED ACCESS**

*EXXON/MOBIL*

*EnCana Oil & Gas (USA) Inc.*

**EXISTING ACCESS**

SCALE: 1" = 2000'



*CHEVRON*

**ENGANA OIL & GAS (USA) INC.  
N. PARACHUTE WF A15 T5S R96W**

INBERG-MILLER ENGINEERS

124 EAST MAIN STREET

307-856-8136 RIVERTON, WYOMING

82501

SURVEYED: 11/9/04

DRAFTED: 12/14/04

REVISED:

SCALE: 1" = 2000'

DWG.: A15\_PLATS

SHEET: 5 of 6



**PLAT #6  
CURRENT FOOTAGE**

*EnCana Oil & Gas (USA) Inc.*

WEST FORK  
PARACHUTE CREEK

WF14D A15 596

N73°54'20"W 2167.11'

WF A15 596

WF02B A15 596

N87°31'15"E 1469'

PROPOSED ACCESS

N72°02'45"E 2240'

WF03D A15 596

WF02D A15 596

N49°27'38"E 1100'

WEST FORK ROAD

N48°31'49"E 2025'

WF07B A15 596

N70°41'31"E 3032.12'

BLM

N48°00'26"E 2942'

S24°14'53"W 2139.92'

WF06D A15 596

WF07D A15 596

5400

WF10B A15 596

SCALE: 1" = 500'



**ENCANA OIL & GAS (USA) INC.  
N. PARACHUTE WF A15 T5S R96W**

INBERG-MILLER ENGINEERS

124 EAST MAIN STREET

307-856-8136 RIVERTON, WYOMING

82501

SURVEYED: 11/9/04

DRAFTED: 12/14/04

REVISED:

SCALE: 1"=500'

DWG.: A15\_PLATS

SHEET: 6 of 6